

EVERYTHING PHOTOGRAPHIC



Established 1878

GEORGE MURPHY, Inc.

57 EAST 9th STREET

∴

NEW YORK

**Photographic
.. Materials..**

♦ ♦
Mail Order

Cash

Catalog No. 127

◆◆◆◆◆
Everything Photographic

EXCLUSIVE HANDLERS OF
PHOTOGRAPHIC MATERIALS

GEORGE MURPHY, INC.

ESTABLISHED 1878

57 EAST 9th STREET

NEW YORK

We manufacture in our own factory original styles of mounts and folders

WE are American Agents, hold exclusive patents or manufacture, under agreement with pateneee, the following articles:

- Autotype Carbon Tissue,
- Wynne Exposure Meters,
- Backgrounds—Rough & Caldwell,
- Mounts & Folders,
- Housh Albums
(Greater New York)
- Sprague & Hatheway Products.
(Greater New York)
- Cornell Lens Hood,
- No-Slip Masks,
- Rounds' Baby Holders,
- Olmstead Lantern Slide Mats,
- Royal Foreground Ray Screen,
- Eagle Flash Lamp,
- Eagle Vignetter,
- Star Negative Files.

PRICES QUOTED ARE FOR CASH WITH ORDER. ALL DISCOUNTS HAVE BEEN DEDUCTED.

Prices Subject to Change Without Notice

Our Guarantee

We guarantee all our goods to be exactly as represented in this catalogue. We also send them with the understanding that if they are not perfectly satisfactory to the purchaser and are returned to us immediately unused (except books), we will refund the money paid for same less the transportation charges.

Our aim is pleased customers who will recommend us to others.

GEORGE MURPHY, Inc.

57 EAST 9th STREET

NEW YORK

JANUARY, 1927

INDEX

GENERAL INDEX PAGE 211

THE articles listed in this catalogue are arranged alphabetically, A, B, C, &c., with reference headings under each letter. This is a quick and convenient method of locating any article.

If you are interested in any particular subject, as, for example: Projection Apparatus, or X-Ray Goods, look under "P" or "X," as the case may be, and you will find the various articles referring to your subject listed, even if you do not know their trade name.

Factory costs fluctuate, and prices quoted in this catalogue represent costs at time of issue, therefore PRICES ARE SUBJECT TO CHANGE WITHOUT NOTICE.

We are not responsible for goods after being delivered to the Post Office, Express Company or Railroad.

When ordering to be sent C. O. D. we require a deposit on the order sufficient to cover transportation both ways.

Prices quoted are F. O. B. Our Store, except when otherwise specified in the catalogue.

PRICES QUOTED ARE FOR CASH WITH ORDER. ALL DISCOUNTS HAVE BEEN DEDUCTED.

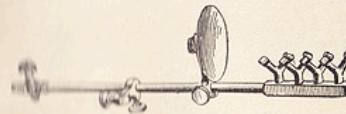
We solicit your valued orders, and can assure you that same will have our careful and prompt attention.

A

Absorbent Cotton, see Cotton, Page 51

EAGLE ACETYLENE BURNER

The Acetylene Burner is made with four burners, each having two tips, which produces the floating flame; each.....\$6.00



EAGLE ACETYLENE GENERATOR

This is a perfect generator in the simplest form. It is light and compact and easy to operate. The carbide is placed in a wire basket and hung in the inner tank and secured with a catch. The flame produced is perfectly steady and brilliant; each.....\$5.00
Calcium Carbide—2 pound can..... .70
Calcium Carbide—5 pound can..... 1.70

Acid Hypo, see Fixing Bath, Page 76

EAGLE ADHESIVE WAFERS

These wafers are gummed on both sides with a strong adhesive and by their use it is possible to mount photographs without destroying the gloss. They are especially adapted for neatly mounting photographs in albums. Price per box of 100.....\$0.15

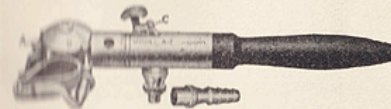
Adjuster for Camera, see Tripod Accessories, Page 196

AIR BRUSHES AND SUNDRIES

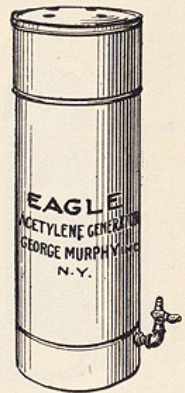
Save the money you are paying others to do your coloring, negative retouching, bromide work, etc.

Genuine satisfaction and confidence comes to you the minute you use a Paasche.

Develop individuality in your pictures by using Model "A," the most accurate and wonderful artist tool for producing artistic and skillful work.



- Paasche Air Brush, Model A—For work on small heads.....\$35.00
- Paasche Air Brush, Model EE1—For average studio use..... 20.00
- Paasche Air Brush, Model FF1—For large heads and backgrounds..... 12.50
- Paasche Air Brush, Model M—From hair line to broad spray..... 26.50
- Paasche Air Brush, Needles for Model A Brush, per dozen..... .75
- Fountain Air Brush, Model A—For general use..... 25.00
- Fountain Air Brush, Model B—For backgrounds..... 27.50
- Wald Air Brush, Model A1—For fine work..... 22.00
- Wald Air Brush, Model U—For line or broad spray..... 25.00
- Air brush tubing, plain slate, per foot..... .08
- Air brush tubing, covered, per foot..... .12



C

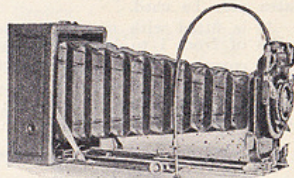
SERIES I KORONA

A good camera, similar to the Series V, but with fewer adjustments and of a shorter bellows draw. Well suited for advanced amateur work at a very moderate price. The bed may be dropped for wide angle work.

Specifications

Mahogany rubbed finish, metal parts nickel plated, leather covered, detachable ground glass frame, rising and falling front, reversible back and brilliant finder; bellows length, 4x5—7 in., 5x7—9 in.; weight, 4x5—2½ lb., 5x7—3½ lb; dimensions, 4x5—3x6¼x6¼, 5x7—3½x8x8. Prices include leatherette covered case and one plate or film holder

	4x5	5x7
Series I Korona with F.6.3 Anastigmat lens and Betax shutter	\$22.50	\$36.00
Extra plate or film holders	1.35	1.80
Film pack adapter	1.58	2.25



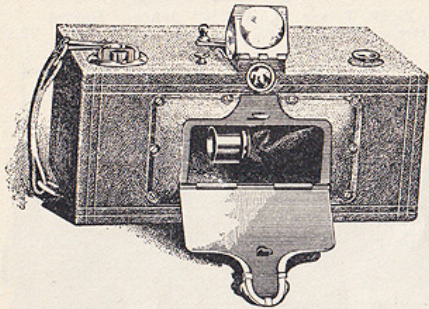
NO. 3A PANORAM KODAK

Whether it's a broad sweep of landscape or a large group, the Panoram gets the whole view with a single exposure.

This new camera uses regular 3A Kodak film.

Capacity without reloading, 5 exposures. Focus, fixed. Lens, Meniscus. Two-speed shutter. Brilliant finder, with hood. Two tripod sockets. Body, wood, covered with long crepe grain genuine cowhide. Metal parts finished in nickel and black enamel. Black bellows. Spirit level. Size of picture, 3¼x10¾.

No. 3A Panoram Kodak	\$36.00
Black sole leather carrying case, with strap	8.00



KORONA PANORAMIC VIEW CAMERA

A Korona Panoramic View Camera is an investment which brings big returns because it creates new business at better prices and gives the photographer a reputation for enterprise by using modern apparatus. In many cases photographers have reported to us that they have nearly paid for the outfit by taking one or two large groups.

Lens Board	Camera Folded	Bellows Length	Weight of Camera
5x123½x5½	5x12 .5¼x16x10¾	5x1223½ in.	5x12 8 lb.
7x175¼x5¼	7x17 5½x21¼x13¼	7x1728¼ in.	7x1710 lb.
8x206x6	8x20 .6x24½x14¾	8x2032½ in.	8x2013½ lb.



Camera only without case or holder	5x12 \$57.50	7x17 \$71.00	8x20 \$79.50
Canvas carrying case	8.50	8.50	10.00
Extra charge for leatherette bellows, with leather corners	3.00	4.00	5.00
Plate or film holders	6.00	7.50	9.00
Lens boards	.75	.75	.90
Leatherette covered carrying case	10.00	10.00	12.00
5x12 Reducing Back with 5x7 Reversible Back			12.00
7x17 Reducing Back with 6½x8½ Reversible Back			15.00
8x20 Reducing Back with 8x10 Reversible Back			18.00

C

CIRKUT CAMERAS

No. 10: 6, 8 or 10 in. x 20 ft.

Cirkut Cameras are exclusively for panoramic work, that is they are strictly revolving cameras. Within the film capacity limit, there is no fixed length of picture, and in two models even the width may be varied to suit the requirements of the view.

No. 10, measuring 9 x 11 x 12 inches closed, has a focal capacity of 27 inches, a lens board of 4 x 4 inches and weighs 49 pounds. By the use of special kits or adapters it makes negatives 6, 8 or 10 inches in width and takes rolls from 4 to 20 feet in length.

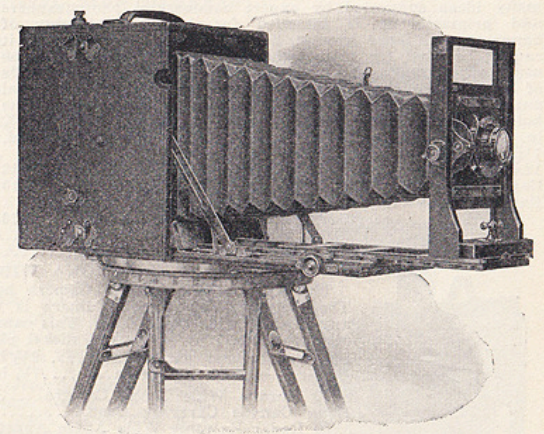
By the use of a Convertible Anastigmat Lens, three focal lengths are available, enabling the operator to fix both the size of the image and the length of the negative. The lens of longest focus gives the largest image and the longest negative.

A circular scale, set around the tripod top, shows approximately how long a negative will be required for the particular view which is being photographed. By this means the operator knows at what point to close the exposure. As the exposure release is pressed, the camera begins to revolve on the tripod head, and it stops when the release is again pressed to close the exposure.

The exposure speed—from ½ to 1/12 second—is regulated by a dial and pointer on the back of the camera controlling a governor which causes the camera to revolve rapidly or slowly as required by light conditions.

The lens of the No. 10 Cirkut has an equivalent focus of 10½ inches, the front lens when used alone, 24 inches, the back lens, 18 inches.

No. 10 Cirkut Camera fitted with Turner-Reich Convertible Anastigmat Lens, Series II, Double Valve Shutter with bulb and hose and items listed in note.....\$354.50
NOTE:—With each camera is included Cirkut gears and No. 10 professional tripod legs and two cases. Complete catalog of Cirkut Cameras mailed on request.

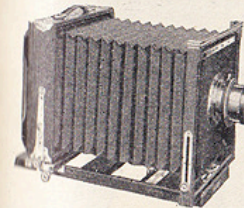


KORONA HOME PORTRAIT CAMERA

It fulfills very nicely the need of a light compact portable camera for home portraiture or for use in small studios, either private or professional. Including all the regular adjustments and Korona features it has a lens board of ample size to accommodate lenses of the largest aperture. It is made entirely of selected cherry, finished in walnut, and all the metal parts are made of brass, nickel plated. The short canvas case, lined with canton flannel, takes the camera and six holders in 5x7 size and three holders in 6½x8½ and 8x10 size.

Size	Bellows Length	Lens Board	Weight
5x7	13½ in.	6x6	5 lb.
6½x8½	16½ in.	7x7	6 lb.
8x10	18½ in.	9x9	8 lb.

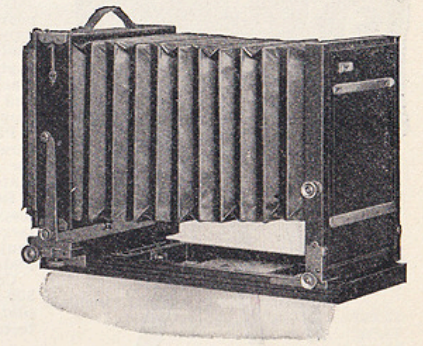
Korona Home Portrait Camera, only	5x7 \$29.70	6½x8½ \$31.50	8x10 \$34.75
Canvas Carrying Case	4.15	4.50	4.95
Plate or Film Holder	1.80	2.03	2.25
Leather Bellows, extra	1.50	2.00	3.00
Lens Boards	.90	1.00	1.25



EASTMAN HOME PORTRAIT CAMERA NO. 3

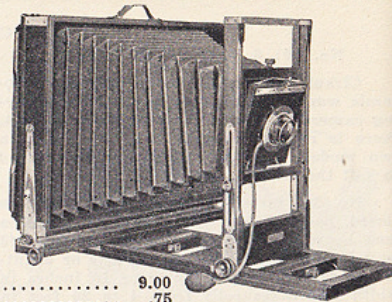
This is a decidedly practical 8x10 camera for home portraiture, the special features that adapt it to this work being its extra large bellows and a 7x7 in. front board; large enough to accommodate as large a portrait lens as would be used for such work. The entire front of the camera racks up and down and locks at any point, the movement being entirely independent of the bellows. Bellows draw is 20 in.

Eastman Home Portrait Camera No. 3, 8x10, including one Eastman Film Holder and canvas carrying case for camera and six holders.....\$63.00
Extra Canvas Carrying Case for camera and six holders 9.00
Extra Canvas Carrying Case for Camera, Sliding Ground Glass Carriage and six holders..... 9.00
No. 3 Home Portrait Sliding Ground Glass Carriage 20.00
8x10-5x7 Reversible Adapter Back..... 12.00
Extra Lens Boards..... 1.25



KORONA BANQUET CAMERA

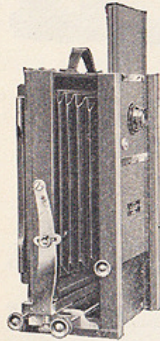
We have incorporated in the construction of this camera many ideas suggested by expert commercial photographers and primarily it is intended for taking flashlights of banquets and large groups, but there is no reason why it cannot be used for many other purposes as it has all the usual adjustments of a view camera. This camera is made of cherry throughout with walnut finish and has all metal parts nickel plated—a very handsome combination. The holders have double flexible valves. Bellows length 22 3/4 in. Lens board 5 1/2 x 5 1/2. Weight 18 lb. Dimensions closed, 7 1/4 x 18 1/2 x 23 1/4. 12x20 Banquet Camera without case or holder.....\$68.40 Canvas Carrying Case 8.10 Extra charge for leatherette bellows with leather corners 2.70



12x20 Plate Holder or Film Holder..... 9.00
Lens Boards 5 1/2 x 5 1/275

KORONA WIDE ANGLE CAMERA

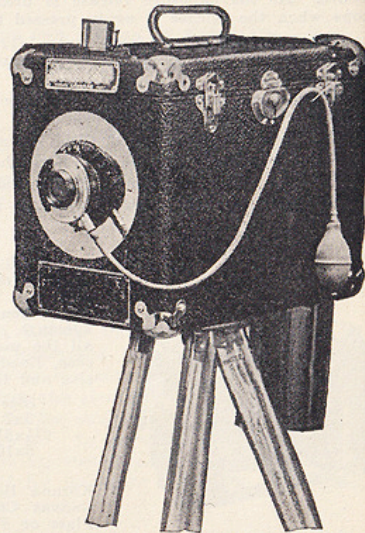
The Korona Wide Angle Camera has been designed especially for this purpose. The Korona Wide Angle Camera is made in 8x10 size and it will accommodate any type of wide angle lens. This camera is made of cherry with walnut finish and all metal parts are of brass, nickel plated. Shortest bellows extension.....2 1/2 in. Weight of camera.....7 lb. Longest bellows extension.....7 1/4 in. Weight of case.....7 lb. 8x10 Korona Wide Angle Camera.....\$ 52.20 Long Canvas Carrying Case..... 6.75 8x10 Radar Extreme Wide Angle Anastigmat lens F.16 in Barrel, focal length 6 1/4 in., angle 90 deg..... 67.50 8x10 Special Radar Extreme Wide Angle Anastigmat Lens F.16 in Barrel, focal length 4 1/2 in., angle 110 deg..... 54.00



EAGLE TIN TYPE & QUICK FINISH POST CARD CAMERA NO. 4

The No. 4 Eagle Camera is entirely different from the regular box camera. It is fitted with a bellows like a professional view camera and is without exception, the most attractive and distinguished looking camera on the market. Takes photographs on tin plates or post cards, size 1 3/4 x 2 1/2, 2 1/2 x 3 1/2 and buttons. It will take portraits, groups, crowds, landscapes, in fact any subject desired by the operator. Complete outfit No. 4 Eagle Camera with enough supplies to make 300 pictures consisting of:

- No. 4 Eagle Camera.....\$35.00
- 1 No. 2 Folding Tripod..... 3.00
- 100 Post Cards 2 1/2 x 3 1/2 1.80
- 100 Plates 1 3/4 x 2 1/270
- 100 Button Plates60
- 100 Button Frames 1.25
- 100 Mounts 2 1/2 x 3 1/245
- 100 Mounts 1 3/4 x 2 1/230
- 2 Developers50
- 1 Graduate Glass15
- 1 Ammonia Tester50
- 1 Pair Tweezers25
- 1 Magnet (no charge)
- \$44.50**



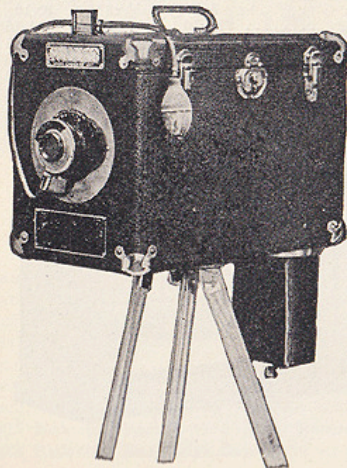
EAGLE TIN TYPE & QUICK FINISH POST CARD CAMERAS NO. 3

Our No. 3 Eagle Camera takes photographs on plates and post cards, size 1 3/4 x 2 1/2, 2 1/2 x 3 1/2 and buttons. The No. 3 Eagle Camera has made a big success and is unquestionably the leading tin type camera now used by the One Minute Photographers. This camera is the most serviceable and reliable machine on the market. It is extremely simple in construction and will take pictures of one person, groups, crowds or landscape views.

Plate Holder: The plate holder is made to accommodate three size plates and is reversible for taking pictures either on the length or width of the plate. The plate magazine holds 300 plates at one time, 100 of each size.

Developing Cup: The developing cup of this camera is made of cast brass highly nickel plated with two rubber tanks large enough to hold forty plates at one time. It can also be equipped with a solid composition rubber cup and brass nickel-plated top.

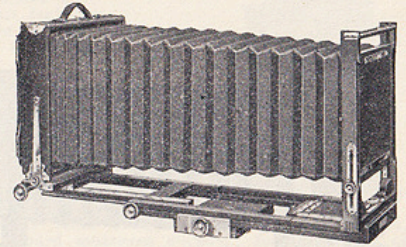
Complete outfit No. 3 Camera with enough supplies to make 300 pictures consisting of: The camera, No. 2 tripod, 100 plates of each size, mounts for same, 2 developers, ammonia tester, graduate glass, pair of tweezers and magnet.....\$34.00



KORONA PICTORIAL VIEW CAMERAS

Here is a good camera for all around work. Large front board, sliding extension attached to camera, bed block to balance on tripod, long bellows for copying. The 3 1/4 x 4 1/4 has a leather bellows, larger size has leatherette bellows. Carrying case is leatherette with metal corners.

Lens Board	3 1/4 x 4 1/4	5x7	8x10
Bellows Length	3 1/4 x 3 1/4	5 1/4 x 5 1/4	7 1/2 x 7 1/2
Weight of Camera	14 in.	21 in.	29 in.
Weight of Case	2 1/4 lb.	5 3/4 lb.	11 lb.
Pictorial View camera without case or holder\$28.80\$37.80\$49.50
Leatherette covered case 4.50 5.40 7.65
Extra charge for leather bellows 2.70 4.50 4.50
Plate holders or film holders 1.35 1.80 2.25
Lens boards7575 1.00



KORONA VIEW CAMERAS

The Korona View represents many years of evolution and improvement resulting in a standard type of camera with many refinements in construction, design and finish, which the experienced photographer will appreciate.

SPECIFICATIONS

Walnut finish, metal parts nickel plated, reversible back, spring acting pivoted ground glass frame, double swings, rising and falling front with rack and pinion, sliding panel in back, detachable lens boards, bed brace, automatic back stop, leatherette bellows lined with rubber cloth.

Lens boards..	4 x 5	5 x 7	6 1/2 x 8 1/4	8 x 10	7 x 11	11 x 14
Bellows length	4 x 4	4 1/2 x 4 1/2	4 1/2 x 4 1/2	6 x 6	6 x 6	6 3/8 x 6 3/8
Weight	20 in.	24 in.	28 in.	32 in.	34 in.	42 in.
	4 1/2 lbs.	5 1/2 lbs.	7 lbs.	9 lbs.	10 1/2 lbs.	15 lbs.

The 7 x 11 size has a lateral front adjustment which is not a feature of the other sizes.

4x5.....\$35.50	5x7.....\$39.60	6 1/2 x 8 1/4.....\$44.80	8x10.....\$48.15	7x11.....\$54.00	11x14.....\$73.80
-----------------	-----------------	---------------------------	------------------	------------------	-------------------

EASTMAN VIEW CAMERA (11x14)

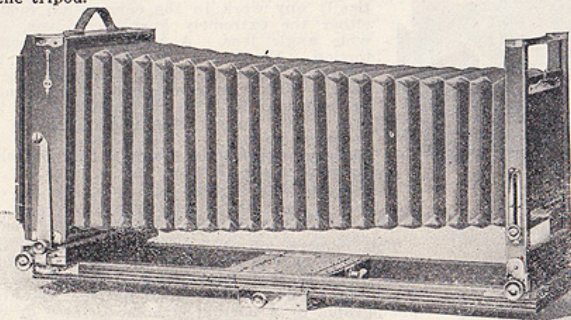
For making 11 x 14 negatives we supply this instrument. It is of most substantial construction. Bellows draw 37 inches. Lens board—5 3/4 x 5 3/4. Outside dimensions closed—19 3/8 x 17 1/8 x 5 3/8.

Eastman View Camera, with carrying case and one Plate or Film Holder.....\$106.25

Write us regarding Lenses for the above cameras or see Lenses on page 99

EASTMAN VIEW CAMERAS NO. 2D

Cameras that are built for service but are handsome in design and finish. They have every adjustment of practical value, large front boards, bellows supports and a sliding tripod block for centering the weight of the camera over the tripod.



Bellows draw.....	5x7	8x10	7x11
Weight	23 in.	29 1/2 in.	31 in.
Lens board	7 lb.	11 1/4 lb.	15 1/2 lb.
Size closed	4 1/2 x 4 1/2 in.	6x6 in.	13 1/2 x 6 3/4 in.
	11 3/8 x 9 7/8 x 5 3/4"	14 7/8 x 13 x 5 3/4"	16 x 13 1/2 x 8 3/4"

Eastman View Camera No. 2-D with Carrying Case and one Eastman View Plate or Portrait Film Holder.....	5x7	8x10	7x11
\$51.00\$59.50\$55.25

Outfits

- 6 x 7 No. 2 D Eastman View Camera; Carry Case; 6 Plate (or film) Holders; 7 1/4" Ser. 4 Velostigmat F6.3 Betax Shutter; Combination Tripod, focus cloth.....\$96.10
- 6 x 7 With 7 1/4" Ser. II Velostigmat F4.5 Betax Shutter.....112.45
- 8 x 10 2 D Eastman View Camera; Carry Case; 6 Plate (or film) Holders; 12" Ser. 11 Velostigmat F4.5 Betax Shutter; Combination Tripod, focus cloth.....198.25
- 8 x 10 With 12" Dagor F6.8 Acme Shutter.....200.95
- 8 x 10 With 12 1/2" Eagle Rapid Rect. Lens; FS Auto Shutter.....94.15

C

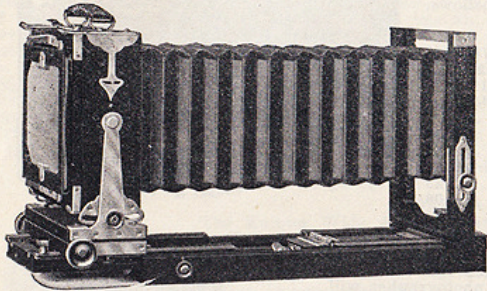
ANSCO UNIVERSAL VIEW CAMERAS

3¼x4¼, 4x5, 5x7 and 8x10

These are the new Ansco view cameras which have received so much favorable comment at conventions and elsewhere. They were designed in response to a general demand for new equipment of this type incorporating better features with greater rigidity and strength. Owners pronounce them the best view cameras made.

Specifications

	4x5 or 3¼x4¼	5x7	7x11 or 8x10
Maximum focal capacity.	17	20½	26½
Minimum focal capacity.	4	4	4
Size of lens boards.....	4x4	5x5	7½x7½
Cameras	\$56.25	\$58.50	\$67.50
Price of extra holders..	\$1.35	\$1.80	\$2.25
Pr. of extra lens boards	.90	.90	1.13
7x11 adapter back for 8x10 camera.....	\$16.20		
Same with carrying case.....	21.60		
5x7 adapter back for 8x10 camera.....	15.00		
Case holds camera and three holders and is made of heavy leatherette reinforced with metal at corners			

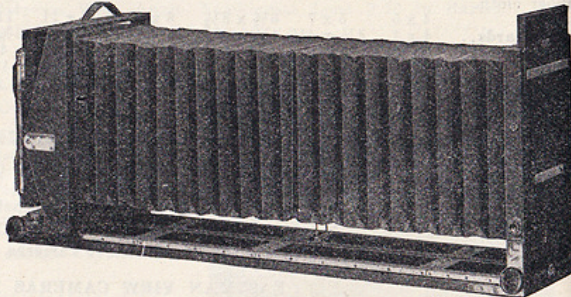


F. & S. COMMERCIAL CAMERA

Meets every requirement of the commercial photographer. Has great bellows capacity and will take lenses of extreme focal length, as well as those of short focus. Rectangular bellows, allowing extreme rising and lowering front. Double swing-back adjustment with excessive swing.

Size of camera closed—8¼ x 13 x 17. Lens board—7 x 7. Weight—34 lbs.

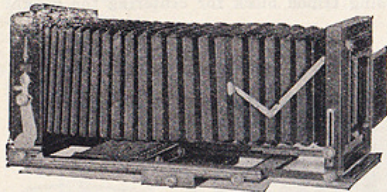
- Commercial Camera, including Carrying Case and one Sterling Plate, or Portrait Film
- Holder 8 x 10..... \$135.00
- 11 x 14, same..... 189.00
- Carrying Case (black fibre).... 12.00



EASTMAN COMMERCIAL CAMERA (8x10)

A single camera that equips the photographer for practically any work in the commercial field. It accommodates either the extremely long focus lens, or the short focus, wide angle lens. A new feature permits correcting distortion. Heretofore you had to stop the lens down for sufficient depth of focus to compensate for swinging the back. With this camera the lens swing can at all times be kept parallel with the swing of the back. This permits use of the largest stop openings with lenses of sufficient covering power.

- Eastman Commercial Camera (without shutter).....\$126.00
- Recessed Lens Board, "A"..... 2.50
- Sliding Lens Board, "B"..... 5.00



F. & S. FINGER PRINT CAMERA (2¼x3¼)

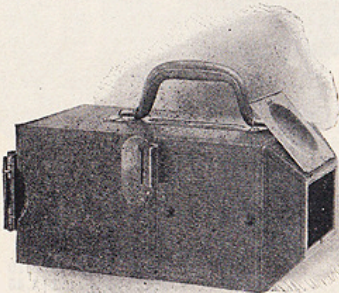
This camera affords not only a positive means for securing accurate records of finger prints, but is readily adapted to other uses where accurate photographic records are desired: for quickly obtaining a picture of a small pattern, signature, formula, label, photograph, or a portion of some printed or written matter. Its small size makes it most convenient for general use and especially in inaccessible locations.

Four miniature electric lamps located behind the front aperture illuminate the subject as the exposure is made. By pressing a small button these lights, operated by batteries in the camera, may also be used for locating the finger prints.

The camera accommodates all of the Graflex Jr. attachments for the use of plates, cut or roll film and film packs.

The camera measures 11¼x6x6 and, with batteries, weighs but 5 lb. 5 oz.

- F. & S. Finger Print Camera complete with Kodak Anastigmat lens F6.3, shutter, two batteries, ten lamps and one double plate holder..... \$49.50
- Extra batteries No. 789, each..... 1.70
- Extra Mazda Miniature Lamps, each..... .50
- Extra Mazda Miniature Lamps, per carton of ten..... 4.75
- Carrying Case, Leather..... 10.25



C

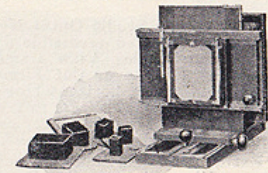
FOLMER MULTIPLE CAMERA

For studios where photographs are made for chauffeurs' licenses, post cards and commuters' passes; at resorts, and for general 5x7 work as well, this new outfit fills a real need. The foremost feature of this new Folmer product is the multiple back. This device is semi-automatic in action—maximum production results with but a minimum expenditure of effort on the operator's part.

A set of six kits or masks is provided so that two, four, nine, sixteen or twenty head and shoulder portraits may be made on a 5x7 film or plate, and there is a kit for four full length portraits, as well. This, of course, is in addition to the straight 5x7 negative for portrait or group work. Moreover, any of these exposures, except the four full lengths, may be made vertically or horizontally simply by transposing the plainly marked spacing rods that control the action of the back, and, of course, reversing the holder in the back. This reversible feature, simple and convenient, accords the camera exceptional versatility.

Specifications: The Folmer Multiple camera is substantially made of cherry and mahogany, dark, hand-rubbed finish; metal parts are sandblasted. The lens board measures 6¼x6¼; focal capacity of camera, 19 in. Weight but 15 lb.; dimensions, closed, 18x16½x23 in.

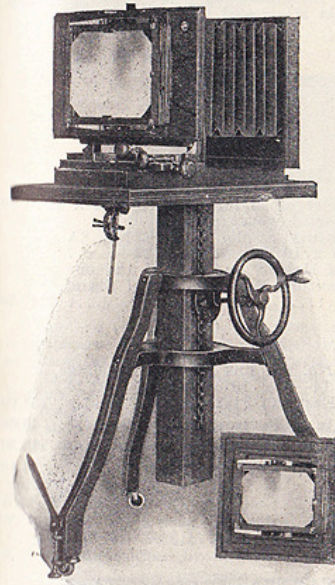
- Folmer Multiple Camera with set of six kits and one 5x7 film or plate holder (without lens or shutter)..... \$76.50
- Complete as above and with No. 34 Kodak Anastigmat F.4.5 lens (8½ in.) and Compound Shutter... 153.65
- Extra 5x7 film or plate holders, each..... 2.40
- Extra lens boards, each..... 1.25



CENTURY STUDIO OUTFIT NO 4A (8x10)

This outfit is designed especially for work in a confined space. Though compact, it is complete in every respect. The Century Studio Camera No. 4 with a bellows draw of 22 inches and 9 x 9 lens board, is provided with liberal swing, both vertical and horizontal. Fitted with a Sliding Ground Glass Carriage permitting ready making of a full 8 x 10 negative or of two 5 x 8 exposures on one plate. Regular equipment also includes one 8 x 10—5 x 7 Reversible Adapter with one 8 x 10 and one 5 x 7 Eastman View Plate or Eastman Portrait Film Holder.

- The stand is the Century No. 4A.
- Century Studio Outfit No. 4A complete consists of an 8 x 10 Century Studio Camera No. 4A, with Sliding Ground Glass Carriage No. 4A, one 8 x 10—5 x 7 Reversible Adapter with one 8 x 10 and one 5 x 7 Eastman View Plate or Portrait Film Holder, and the Century Studio Stand No. 4A.....\$118.80
- When furnished separately.
- Century Studio Camera No. 4A with Sliding Ground Glass Carriage No. 4A, one 8 x 10 Eastman Plate or Film Holder, one 8 x 10—5 x 7 Reversible Adapter—including one 5 x 7 Eastman Plate or Film Holder..... 87.30
- Sliding Ground Glass Carriage, No. 4A with one 8 x 10 Eastman View Plate or Portrait Film Holder..... 31.50
- 8 x 10—5 x 7 Reversible Adapter, including one 5 x 7 Eastman View Plate or Portrait Film Holder..... 10.80



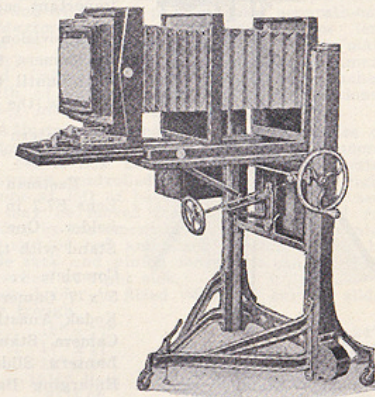
ANSCO NO. 5 STUDIO OUTFIT

This outfit has proved so adaptable and so satisfactory for all classes of studio work that we have discontinued the build-

ing of other models except on special order. Photographers who have discarded other equipment for it say that it gives a new thrill to a routine operation. This is because of its complete responsiveness to the operator's need of the moment, when convenience of adjustment means so much. To this convenience are added accuracy, rigidity, and quietness of movement, with substantial construction and a richness in cabinet work and finish which is professional to the last detail.

Raising, lowering, tilting, swings, bed extension, rough and fine focusing actions—in fact, all desired features—are present, and for long-focus work the bellows has a draw of 40 inches. For such work the camera may be run forward on the platform if desired, bringing all movements within as easy reach from focusing position as when using smaller lenses that do not require so much bed extension. Equipped with reversing sliding ground glass attachment for 8 x 10 double plate or film holders, 5 x 8 diaphragm, and reversing adapter for 5 x 7 holders, with 3½ x 5 diaphragm. Space for adapter on front of stand, so that it will not get stepped on or mislaid. Holder rack is provided also. The outfit is beautifully finished in Adam brown.

- Price complete, with one holder each 8 x 10 and 5 x 7...\$155.25
- Extra holders for either plates or cut films, as desired,
- 8 x 10 2.25
- 5 x 7 1.80



EAGLE ANHYDROUS SULPHITE SODA
Tested

Manufactured Especially for Photographic Purposes.
It is of the first importance that sodas used for making developer should be absolutely pure so as to obtain uniform results.

Our Eagle anhydrous sulphite we guarantee to be photographically pure, always uniform and not to lose strength by age. It will be found a very satisfactory article.

1-pound bottle	\$0.85
1-pound can25
5-pound bottle	1.15
5-pound can	1.05
25-pound can	4.50

EAGLE MONOHYDRATED CARBONATE SODA (Dried)
Tested.

Manufactured Especially for Photographic Purposes.
Double the strength of the crystals, therefore use only one-half the quantity in any formula calling for crystals. Should be used in connection with our anhydrous sulphite to produce the best results. It is an article upon which the photographer can depend.

1-pound bottle	\$0.31
1-pound can25
5-pound bottle	1.05
5-pound can90
25-pound can	4.00

DEVELOPING AGENTS

	1 Ounce	1/4 Lb.	1/2 Lb.	1 Lb.	5 Lb.		1 Ounce	1/4 Lb.	1/2 Lb.	1 Lb.	5 Lb.
Acrol55	1.95	3.75	7.20	Hydrochinone (Eastman)23	.65	1.15	2.15	10.00
Actinol (see below)						Kodolon43	1.49	2.84	5.40	26.65
Aduro (Hauff)57	2.14	4.28	6.08	Metol (Johnson)40	1.35	2.55	4.95	24.00
Amidol (Johnson)50	1.71	3.30	6.30	30.00	Metol (Hauff)50	1.80	3.40	6.30
Amidol (Agfa)53	1.90	3.57	6.65	Metol (Agfa)53	1.90	3.57	6.65
Amidol (Hauff)53	1.90	3.57	6.65	Ortol (Hauff)57	2.10	4.28	8.08
Cummime No. 11				2.40	Ortol (Agfa)50	1.90	3.57	6.65
Dianol	1.00	3.50		12.00	Paramidophenol33	1.05	2.00	3.60	17.80
Eagetol (see below)						Photol50	1.80	3.40	6.30
Edinol55	2.00	3.75	7.00	Pictol (Mallinckrodt)50	1.65	3.00	5.75
Elon (Eastman)47	1.44	2.77	5.40	25.10	Pyro-Resublimed (Eagle)25	.65	1.20	2.30	10.00
Eikonogen (Agfa)55	2.00	3.72	7.00	Pyro-Resublimed (Merck)25	.65	1.20	2.35	10.00
Glycin (Johnson)50	1.71	3.30	6.30	30.00	Pyro-Crystal (Eastman)25	.60	1.05	1.80	8.25
Glycin (Hauff)53	1.90	3.57	6.65	Rodinal (see below)					
Glycin (Agfa)53	1.90	3.57	6.65	Rhodinal48	1.30	2.40	4.50
Hydrochinone (Eagle)21	.60	1.10	2.10	9.90	Tozol41	1.40	2.61	4.95	27.40

Developers in Tabloid Form, see Tabloid, page 179

ACTIVOL

A universal liquid developer for all purposes. Dish, stand or tank.

3 oz. bottles, each.....	\$0.54	8 oz. bottles, each.....	\$0.99	16 oz. bottles, each.....	\$1.80
--------------------------	--------	--------------------------	--------	---------------------------	--------

EAGETOL

An American made Developing Agent. Has speed and remarkable lasting quality. Gives the rich blue-black tone so much desired. An ounce of Eagetol Solution will give a greater number of perfect prints than any other developer we have ever tested.

Per oz.	\$0.40	Per 1/4 lb.	\$1.40
Per 1/2 lb.	2.60	Per lb.	5.00

(Agfa) **RODINAL**

3 ounces.....	\$0.57	8 ounces.....	\$1.05	16 ounces.....	\$1.90
---------------	--------	---------------	--------	----------------	--------

INDEX

THE articles in this catalogue are arranged alphabetically, A, B, C, &c., with reference headings under each letter. This is a quick and convenient method of locating any article.

If you are interested in any particular subject, as, for example: Projection Apparatus, or X-Ray Goods, look under "P" or "X," as the case may be, and you will find the various articles referring to your subject listed, even if you do not know their trade name.

Factory costs fluctuate, and prices quoted in this catalogue represent costs at time of issue, therefore PRICES ARE SUBJECT TO CHANGE WITHOUT NOTICE.

We are not responsible for goods after being delivered to the Post Office, Express Company or Railroad. However, we insure under our open policy all parcel post packages against loss or damage in the mail.

When ordering to be sent C. O. D. we require a deposit on the order sufficient to cover transportation both ways.

Prices quoted are F. O. B. Our Store, except when otherwise specified in the catalogue. We solicit your valued orders, and can assure you that same will have our careful and prompt attention.

Prices quoted are for cash with order. All discounts have been deducted.

General Index on page 211

GENERAL INDEX

A	Cleaner	43, 77, 97	Film Sheaths	70	
Acetylene Burner	1	Clips	43, 44, 205	Film, Texture	71
Acetylene Generator	1	Clocks	44, 45	Films	68-70
Acrol	210	Cloth	45, 46	Films, X-Ray	206
Actinol	210	Collodion	46	Filters, Ray	71-74
Actinometers	41	Colors	41, 47, 50	Finders	74, 75
Adapters Film	70	Copylite	51	Finger Tips	74
Adhesive Wafers	1	Corners	136	Fitting Tool	75
Aduro	210	Corrugated Board	51	Fixing Boxes	75, 76
Air Brushes	1	Cotton, Absorbent	51	Fixing Solutions	76, 179, 206
Air Brush Outfits	2	Couplers	175	Flanges	97, 98
Albums	2-4	Cover Glass	95	Flash Bags	77
Amidol	210	Crayon Sauce	49	Flash Cartridges	82
Aprons	5	Cummime	210	Flash, Cleaner	77
Art Gum	4	Cutters, Frontboard	97	Flash Lamps	77, 81
Autochrome	147	D		Flash Powder	81
B	Darkroom	51	Flash Sheets	81	
Baby Holder	5, 6	Desensol	51	Focusing Cloth	82
Backgrounds	6-11	Desk, Retouching	166	Focusing Glass Holder	122
Background Carrier	13	Developers	51, 52, 205	Foot Switch	95
Background Print-in	11	Developing Agents	210	Foregrounds, Comic	12
Backing	13	Developing Cabinets	205	Forms, Brass	83
Backing Cloth	45	Developing Machines	52	Frames	83
Balopticans	161, 162	Diamonds	86	Funnels	84
Bath Holders	13, 14	Dianol	210	Furniture	84-86
Bench	85, 86	Dies, Embossing	58, 59	G	
Biascope	15	Diffusion Disks	53	Gelatine	86
Binders	14	Dippers	53	Glass	86
Binoculars	14, 15	Display Racks	53	Glass Cutters	86
Bleachers	20	Distograph	53	Gloves	87
Blotters	15	Dryers	53-55	Glue	87
Blue Print Powders	15, 16	Dry Mounting	56	Glycin	210
Bolting Cloth	46	Duplicators	56	Graduates	87, 88
Books	16-18	Dyes	56, 57	Ground Glass Substitute	88
Bottles	18	E		H	
Boxes, Storage	143	Eagetol	210	Hangers, Pushless	163
Bromide Solution	18	Easel, Table	57	Hangers, Tank	186, 187, 205
Bromoil Supplies	19-22	Edinol	210	Hardeners	88
Brushes	21, 22	Eikonogen	210	Head Rest	89
Bulb and Tubing	174, 175	Elon	210	Head Screens	88, 89
C	Elon Embossers	57-59	Heater	89	
Cabinet, Film	70	Enlargers	60-63	Hinges, Cloth	45
Cameras	22-38	Envelopes	63, 64	Holders	90
Cameras, Movie	126-132	Envelopes, X-ray	205	Hopper	20
Camera Dressing	97	Eradicator, Color	50	Hydrochinone	210
Camera Stands	38, 39	Etching Tank	186	Hydrometers	90
Camera Stand Jack	39	Etching Tools	64, 65	Hypo	76
Candles	39	Evaporating Dishes	65	Hypocide	90
Canvas, Art	140	Exposure Meters	65-67	I	
Caps, Flash	77, 80	Exposure Rule	205	Ink Remover	90
Caps, Lens	97	Eye Rest	67	Inks	90
Carbons	40	F		Intensifier	91
Carbon Supplies	40, 42	Fabric	67	Intensifying Screens	206
Carboys	18	Fans	67	Ivory	91
Cardboard	134	Fasettos	57	J	
Carrying Cases	42	Faucet Connections	203	Jacks	39
Celluloid	43	Ferrotypes Plates	150	Jars	91
Cement, Film	70	Files	67, 68	Jellitac	144
Chairs	84-86	Film Cabinet	70	Jugs	88
Changing Bags	43	Film Cement	70		
Charcoal	43	Film Packs	69		
Chart, Color	41				
Chemicals	208				

K	Paper, Oil	19	Sheaths	70
Kilns, China	Papers	19, 139-143, 207	Shutter, Coupler	175
Kits	Paper Transfer	20	Shutter Extension	175
Knife	Paramidophenol	210	Shutter Release	175, 176
Kodalak	Passe-Partout Goods	144	Shutters	171-174
Kodaloid	Paste	144	Silver Bath	13, 14
Kodapod	Pencils	144, 145	Silver Precipitant	176
Kodolon	Photo-Flat	160	Sinks	185
	Photol	210	Sizing Solution	50
L	Photomailers	146	Sleeve Projectors	176
Lamps, Darkroom	Photocript	188	Smocks	176
Lamps, Electric	Pictol	210	Soline	170
Lamps, Lighting	Pigments	19	Spirit Sensitizer	41
Lantern, Enlarging	Pitchers	146	Spot Lamps	119-121
Lantern Slide Goods	Plates, Dry	147-150	Spotting Colors	49
Leads, Retouching	Plates, Ferrotypic	150	Sprayers	20
Leather, Dressing	Plates, X-Ray	207	Spreader	20
Lens Boards	Pockescopes	15	Squeegee Boards	41
Lens Caps	Polishing Solution	150	Squeegee Plates	177
Lens Cleaner	Portrait Attachments	112, 113	Squeegee Solutions	177
Lens Flanges	Press, Transfer	20	Squeegees	176
Lens Hoods	Printers	151-155	Stereoscopes	177
Lenses	Printers, Movie	133	Stirring Rods	177
Lenses, Condensing	Printing Frames	155-158	Stipple	176
Lenses, Supplementary	Print Lustre	203	Studio Registers	177, 173
Levels	Print Paddles	158	Stumps	20
Lights	Print Roller	153, 159		
Loading Fixture	Print Straightener	159	T	
	Print Tongs	160	Table, Projection	163
	Probus	160	Tabloid Preparations	179
M	Projectors	128-132, 160-162	Tanks	180-186, 207, 208
Magnesium Powder	Proofing Machine	155	Tanks, Movie	133
Magnesium Ribbon	Pump, Air	2	Tape	46, 179
Magnifiers	Push Pins	163	Telemeter	187
Marl	Pyro	210	Test Chart	72
Masks			Thermometers	188
Metallic Points			Thinners	19
Metol	Q		Thumb Tacks	163
Microscopes	Quickdry	55	Timers	44, 45, 155
Mirrors			Timers, Self	170
Mortar and Pestles	R		Titling Outfits	188
Mounts	Racks, Developing	187	Titling Strips	96
Movie Cameras	Radio Mats	96	Tongs, Print	160
Multiplex	Ray Filters	71-74	Toning Solution	189
	Re-developers	52	Topping Powder	189
N	Reducers	163, 164	Tozol	210
Negative Marker	Reducing Glass	164	Tracing Cloth	46
Negative Pockets	Reflectors	114, 164, 165	Tray Coatings	191
Negative Preservers	Retouching Desks	166	Trays	189-191, 207
Negative Racks	Retouching Frames	165, 166	Treepods	196
Nostane	Retouching Machine	165	Trimmers	191, 192
Numbering Machine	Retouching Outfits	166	Tripod Accessories	196
	Retouching Screens	165	Tripods	193-195
	Retouching Solution	166	Tripods, Movie	132, 133
O	Rhoda'	210		
Oil Supplies	Rocker System	202	V	
Opaque	Rodinal	210	Varnish	166, 197
Optipod	Royaline	170	Vignettors	197, 198
Ortol	Rubber, Mastic	20	Vise, Lantern Slide	97
Outfits, Air Brush	Rubber Solution	167		
Outfits, Bromoil	Rubiline	167	W	
Outfits, Carbon			Washing Boxes	199-203
Outfits, Carbro			Washing Machines	202-203
Outfits, Oil	S		Waxing Solution	41, 203
Outfits, Printing	Safelights	94	Weighmeter	169
	Scales	167-169	Weights	169
P	Screens, Projection	169, 170	Wringers	204
Paddle Print	Self-Timer	170		
Pakodoper	Sensitizing Solution	170		
Pallettes	Sepia Solution	170	X	
	Sharpeners, Retouching	171	X-Ray Goods	205-208

DEVELOPING - PRINTING - ENLARGING COPIES - LANTERN SLIDES

Our facilities are better than ever for properly handling your finishing and all orders are given prompt and careful attention.

It Will Pay You to Give Us a Trial

30 Hour Service on Roll Film Developing

Enlargements One Week Developing

Roll Film and Packs	Plates and Cut Film	Developing
All sizes, Rolls—6 ex.	4 x 5 or smaller Plate or Film	\$0.10
All sizes, Rolls—10 and 12 ex.	5 x 7 or smaller Plate or Film10
All sizes, Packs—6 ex. or more.	8 x 10 or smaller Plate or Film20
All sizes, Packs—5 ex. or less.	X-Ray Plate or Film	
	8 x 10 or smaller50
	11 x 1475

PRINTING Glossy & Semi-Matte

	S. W.	D. W.	Sepia	M't'g Extra
V. P. K. or smaller	\$0.04	\$0.06	\$0.06	\$0.03
Brownie No. 1 and 2 (No. 117 and 120) ..	.05	.07	.08	.03
1-A (No. 116)06	.08	.09	.05
3 1/4 x 4 1/4 (No. 118 and 124)07	.08	.10	.05
3 1/2 x 3 1/2 (No. 101)07	.08	.10	.05
2-C (No. 130)07	.09	.10	.06
3-A (No. 122)08	.09	.10	.06
4 x 5 (Nos. 103, 104, 123)08	.10	.10	.06
4 1/4 x 6 1/2 (No. 126)15	.20	.25	.07
5 x 715	.20	.25	.10
5 x 820	.25	.30	.10
6 1/2 x 8 1/225	.30	.40	.15
8 x 1025	.30	.50	.15
11 x 1435	.40	.65	.25
Post Cards08	.10	.15	.08
Post Cards per 10015	.20	.25	.15
Stereos 3 1/2 x 710	.20	.30	.15
Panorams (small)20	.30	.35	.15
Panorams (large)20	.30	.35	.15

ENLARGING

	M't'd or Art Proof B. and W.	Unmounted B. and W.	Sepia	Puritan Velvet B. and W.	
Post Cards	\$0.25	\$0.35
3 1/4 x 5 1/2 or smaller50	.65	\$0.25	\$0.35	...
5 x 750	.65	.35	.45	\$0.90 \$1.00
6 1/2 x 8 1/270	.90	.50	.65	1.00 1.10
8 x 1090	1.25	.50	.65	1.10 1.30
6 x 1090	1.25	.50	.65	1.10 1.30
7 x 1190	1.25	.50	.65	1.50 1.50
11 x 14	1.25	1.75	.90	1.10	1.70 1.80
14 x 17	2.00	2.50	1.75	2.15	2.30 2.40
16 x 20	3.00	3.50	2.50	3.00	...
20 x 24	3.50	4.50	3.25	4.25	...
30 x 36	5.00	6.50	4.75	6.25	...
4 x 580 .90
10 x 12	1.40 1.60

Regular Copying

No Air Brush or Retouching

5 x 7 or smaller	\$0.65— \$0.75
8 x 10	1.25
11 x 14	2.50

For Special Work Estimates Will Be Given

Lantern Slides

Slides B. and W. from neg.	\$0.60
Sepia Slides65
Slides and copy neg. from prints.	1.00

Coloring

A—Grade best detail work ex.	1.00
B—Grade good qual. aver. type.65

PROMPT ATTENTION TO MAIL ORDERS

We make a specialty of mounting in Albums. We are always ready to offer suggestions—and to quote lowest prices on any kind of special work.

Good Work, Prompt Service, Our Motto