

We manufacture in our own factory original styles of mounts and folders

WE are American Agents, hold exclusive patents or manufacture, under agreement with patentee, the following articles:

Autotype Carbon Tissue,	Penrose Process Year Book,
Wynne Exposure Meters,	Watkins Specialties,
Thornton-Pickard Cameras and Shutters,	Cornell Lens Hood,
Backgrounds—Rough & Caldwell,	No-Slip Masks,
Housh Albums, (Greater New York)	Rounds' Baby Holders,
Sprague & Hatheway Products, (Greater New York)	Olmstead Lantern Slide Mats,
	Royal Foreground Ray Screen,
	Star Negative Files.

PRICES QUOTED ARE FOR CASH WITH ORDER. ALL DISCOUNTS HAVE BEEN DEDUCTED

Prices Subject to Change Without Notice

Our Guarantee

We guarantee all our goods to be exactly as represented in this catalogue. We also send them with the understanding that if they are not perfectly satisfactory to the purchaser and are returned to us immediately unused (except books), we will refund the money paid for same less the transportation charges.

Our aim is pleased customers who will recommend us to others.

GEORGE MURPHY, Inc.
57 EAST 9th STREET ··· NEW YORK

JULY, 1930

LP1137

INDEX

GENERAL INDEX PAGE 211

THE articles listed in this catalogue are arranged alphabetically, A, B, C, &c., with reference headings under each letter. This is a quick and convenient method of locating any article.

If you are interested in any particular subject, as, for example: Projection Apparatus, or X-Ray Goods, look under "P" or "X," as the case may be, and you will find the various articles referring to your subject listed, even if you do not know their trade name.

Factory costs fluctuate, and prices quoted in this catalogue represent costs at time of issue, therefore **PRICES ARE SUBJECT TO CHANGE WITHOUT NOTICE.**

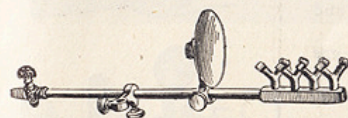
We are not responsible for goods after being delivered to the Post Office, Express Company or Railroad.

When ordering to be sent C. O. D. we require a deposit on the order sufficient to cover transportation both ways.

Prices quoted are F. O. B. Our Store, except when otherwise specified in the catalogue.

PRICES QUOTED ARE FOR CASH WITH ORDER. ALL DISCOUNTS HAVE BEEN DEDUCTED.

We solicit your valued orders, and can assure you that same will have our careful and prompt attention.



Absorbent Cotton, see Cotton, Page 51

EAGLE ACETYLENE BURNER

The Acetylene Burner is made with four burners, each having two tips, which produces the floating flame; each.....\$4.00

EAGLE ACETYLENE GENERATOR

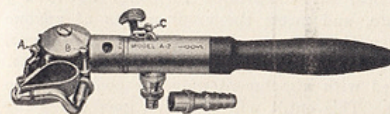
This is a perfect generator in the simplest form. It is light and compact and easy to operate. The carbide is placed in a wire basket and hung in the inner tank and secured with a catch. The flame produced is perfectly steady and brilliant: each.....\$3.50
Calcium Carbide—2 pound can..... .70
Calcium Carbide—5 pound can..... 1.70

Acid Hypo, see Fixing Bath, Page 76

EAGLE ADHESIVE WAFERS

These wafers are gummed on both sides with a strong adhesive and by their use it is possible to mount photographs without destroying the gloss. They are especially adapted for neatly mounting photographs in albums. Price per box of 100.....\$0.15

AIR BRUSHES AND SUNDRIES



Save the money you are paying others to do your coloring, negative retouching, bromide work, etc.

Genuine satisfaction and confidence comes to you the minute you use a Pasasche.

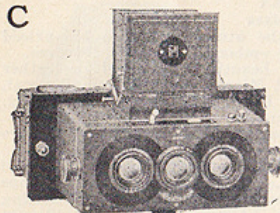
Develop individuality in your pictures by using Model "A," the most accurate and wonderful artist tool for producing artistic and skillful work.

Pasasche Air Brush, Model A—For work on small heads.....	\$35.00
Pasasche Air Brush, Model FF1—For large heads and backgrounds.....	12.50
Pasasche Air Brush, Model M—From hair line to broad spray.....	21.50
Pasasche Air Brush, Needles for Model A Brush, per dozen.....	.75
DeVilbiss Air Brush, Model AB601.....	22.00
Fountain Air Brush, Model A—For general use.....	25.00
Fountain Air Brush, Model B—For backgrounds.....	27.50
Wold Air Brush, Model A1—For fine work.....	22.00
Wold Air Brush, Model U—For line or broad spray.....	25.00
Air brush tubing, plain slate, per foot.....	.10
Air brush tubing, covered, per foot.....	.12



A

C



HEIDESCOPE STERO CAMERA

The choice of the most exacting workers in this fascinating branch of photography. With the new reflecting focusing finder, complete with plate magazine, adapter and case.

	Weight	Price
4x5 107 mm. Zeiss F.4.5 lenses 5.5 cm.....	20½ oz.	\$175.00
Ditto but 6x 13 cm. F.4.5 lenses 7.5 cm.....	27¾ oz.	200.00

ROLLEIDESCOPE CAMERA

Same equipment as the Heidescope but uses roll film.

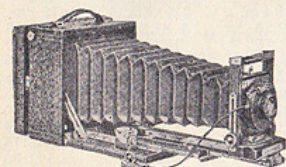
45x107mm size uses No. 127 film.....	\$125.00
6x13cm size uses No. 120 film.....	165.00

KORONA SERIES V CAMERA

A beautiful camera suitable for use in hand or on tripod. A long focus camera, equally well adapted for wide angle work, also suited for pictorial photography, copying and telephoto work.

Specifications

Mahogany rubbed finish, covered with leather; black leather bellows; reversible back; brilliant finder; rack and pinion focusing; bellows extension, 4x5—15½ in., 5x7—20 in.; weight, 4x5—3 lb., 5x7—4¾ lb. Automatic swing back; triple extension bed; rising and falling front; lateral front movement; two tripod sockets; camera dimensions, 4x5—4¼x6¼x6¼, 5x7—4¾x8x8; lens board, 4x5—2x2, 5x7—2½x2½.



Camera (without lens) including leatherette case and one plate or film holder.....	\$57.60	\$67.50
Camera, including case and one plate or film holder and Series V Gunlach F.6.3 Anastigmat lens and Betax shutter.....	74.70	90.90
Extra plate or film holders.....	1.80	2.03
Film pack adapters.....	1.94	2.70
Extra lens boards.....	.90	.90
Auxiliary wide angle bed.....	3.50	4.50

KORONA PANORAMIC VIEW CAMERA



A Korona Panoramic View Camera is an investment which brings big returns because it creates new business at better prices and gives the photographer a reputation for enterprise by using modern apparatus. In many cases photographers have reported to us that they have nearly paid for the outfit by taking one or two large groups.

Lens Board	Camera Folded	Bellows Length	Weight of Camera
5x12 3½x5½	5x12 .. 5¼x16x10¾	5x12 23¼ in.	5x12 8 lb.
7x17 5¼x5¼	7x17 5½x21¼x13¼	7x17 28¼ in.	7x17 10 lb.
8x20 6x6	8x20 .. 6x24½x14¾	8x20 32½ in.	8x20 13½ lb.

Camera with case and holder.....	5x12	7x17	8x20
Canvas carrying case.....	\$71.40	\$87.15	\$98.60
Extra charge for leatherette bellows, with leather corners.....	8.10	8.10	9.90
Plate or film holders.....	3.00	4.00	5.00
Lens boards.....	6.80	7.65	9.00
Leatherette covered carrying case.....	.90	.90	1.00
5x12 Reducing Back with 5x7 Reversible Back.....	10.00	10.00	12.00
7x17 Reducing Back with 6½x8½ Reversible Back.....			12.60
8x20 Reducing Back with 8x10 Reversible Back.....			16.20
			18.90

C

CIRKUT CAMERAS

No. 10: 6, 8 or 10 in. x 20 ft.

Cirkut Cameras are exclusively for panoramic work, that is they are strictly revolving cameras. Within the film capacity limit, there is no fixed length of picture, and in two models even the width may be varied to suit the requirements of the view.

No. 10, measuring 9 x 11 x 12 inches closed, has a focal capacity of 27 inches, a lens board of 4 x 4 inches and weighs 49 pounds. By the use of special kits or adapters it makes negatives 6, 8 or 10 inches in width and takes rolls from 4 to 20 feet in length.

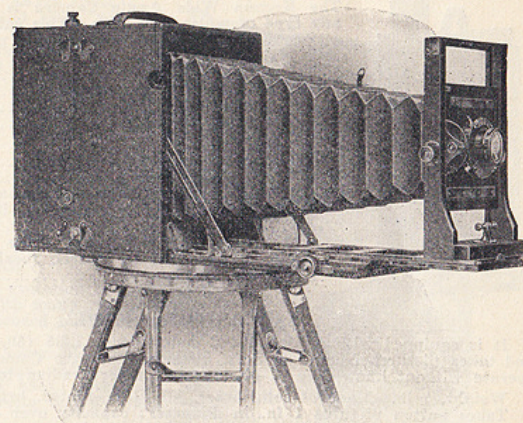
By the use of a Convertible Anastigmat Lens, three focal lengths are available, enabling the operator to fix both the size of the image and the length of the negative. The lens of longest focus gives the largest image and the longest negative.

A circular scale, set around the tripod top, shows approximately how long a negative will be required for the particular view which is being photographed. By this means the operator knows at what point to close the exposure. As the exposure release is pressed, the camera begins to revolve on the tripod head, and it stops when the release is again pressed to close the exposure.

The exposure speed—from ½ to 1/12 second—is regulated by a dial and pointer on the back of the camera controlling a governor which causes the camera to revolve rapidly or slowly as required by light conditions.

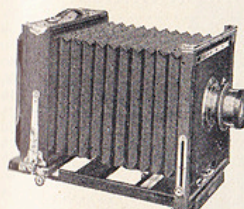
The lens of the No. 10 Cirkut has an equivalent focus of 10½ inches, the front lens when used alone, 24 inches, the back lens, 18 inches.

No. 10 Cirkut Camera fitted with Turner-Reich Convertible Anastigmat Lens, Series II, Double Valve Shutter with bulb and hose and items listed in note.....\$364.50
NOTE:—With each camera is included Cirkut gears and No. 10 professional tripod legs and two cases. Complete catalog of Cirkut Cameras mailed on request.



KORONA HOME PORTRAIT CAMERA

It fulfills very nicely the need of a light compact portable camera for home portraiture or for use in small studios, either private or professional. Including all the regular adjustments and Korona features it has a lens board of ample size to accommodate lenses of the largest aperture. It is made entirely of selected cherry, finished in walnut, and all the metal parts are made of brass, nickel plated. The short canvas case, lined with canton flannel, takes the camera and six holders in 5x7 size and three holders in 6½x8½ and 8x10 size.



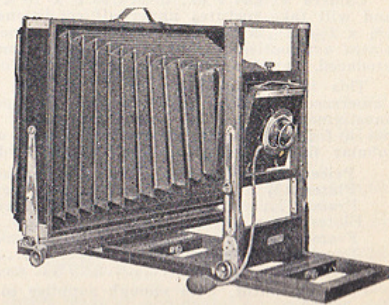
Size	Bellows Length	Lens Board	Weight
5x7	13¼ in.	6x6	5 lb.
6½x8½	16¼ in.	7x7	6 lb.
8x10	18½ in.	9x9	8 lb.

	5x7	6½x8½	8x10
Korona Home Portrait Camera, case and Holder	\$40.00	\$40.50	\$46.55
Plate or Film Holder	2.05	2.25	2.60
Leather Bellows, extra.....	2.00	2.50	3.00
Lens Boards90	1.25	1.25

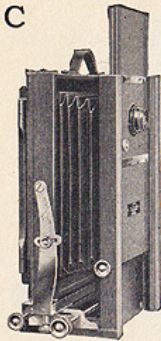
KORONA BANQUET CAMERA

We have incorporated in the construction of this camera many ideas suggested by expert commercial photographers and primarily it is intended for taking flashlights of banquets and large groups, but there is no reason why it cannot be used for many other purposes as it has all the usual adjustments of a view camera. This camera is made of cherry throughout with walnut finish and has all metal parts nickel plated—a very handsome combination. The holders have double flexible valves. Bellows length 22¼ in. Lens board 5½x5½. Weight 18 lb. Dimensions closed, 7¼x18½x23¼.

12x20 Banquet Camera with case and holder.....	\$100.80
Canvas Carrying Case.....	9.00
12x20 Plate Holder or Film Holder.....	10.80
Lens Boards 5½x5½.....	.90



C



KORONA WIDE ANGLE CAMERA

The Korona Wide Angle Camera has been designed especially for this purpose. The Korona Wide Angle Camera is made in 8x10 size and it will accommodate any type of wide angle lens. This camera is made of cherry with walnut finish and all metal parts are of brass, nickel plated.

Shortest bellows extension.....2½ in.
 Longest bellows extension.....7¼ in.
 Weight of camera.....7 lb.
 Weight of case.....7 lb.

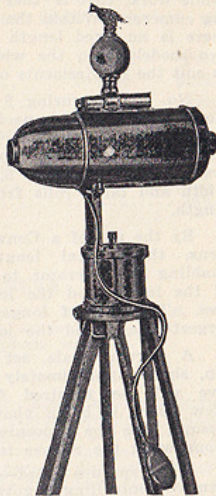
- 8 x 10 Korona Wide Angle Camera..... \$52.20
- Long Canvas Carrying Case..... 6.75
- 8 x 10 Radar Extreme Wide Angle Anastigmat lens
 F.16 in Barrel, focal length 6¼ in., angle 90
 deg. 67.50
- 8 x 10 Special Radar Extreme Wide Angle Ana-
 stigmat Lens F.16 in Barrel, focal length 4½
 in., angle 110 deg. 54.00

EAGLE CAMERASCOPE

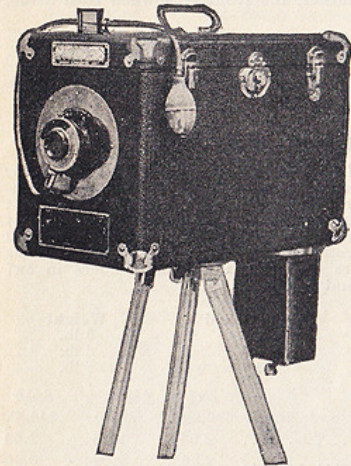
It is equipped with a high speed double lens 1.3.5 (60, MM), fixed focus and takes pictures from 5 to 8 ft. distance from the Camerascope. Easy to operate without knowledge of photography after reading instructions.

Weight, 7 lb. Made of solid brass, all nickel-plated, brightly polished. Takes button pictures 1 in. in diameter; capacity over 300 per hour, and works faster than any other machine in the market.

Price of camera \$45.00
 Button plates per tube 100 1.00
 Button frames per 100 1.25
 Developer package or can of liquid..... .25
 Tripod 3.50
 Complete Eagle Camerascope outfit, with enough supplies to make 300 pictures,\$53.75



EAGLE TINTYPE AND QUICK FINISH POST CARD CAMERA NO. 15



To fill the demand constantly being made upon us by some of our customers for a camera to take regular size post cards in addition to the smaller sizes, we have introduced our new model, the Eagle Camera No. 15, which takes tin plates and post card sizes 1¾ x 2½, 2½ x 3½, 3 x 4½, 3¼ x 5½, and buttons.

The No. 15 Eagle Camera measures 14 x 14 x 8½ and weighs 9 lb. The lens is specially adapted to cut 3½ x 5½ size post cards as well as the smaller sizes, and makes sharp and clear pictures.

Complete outfit No. 15 Eagle Camera with enough supplies to make 500 pictures, consisting of:

- 1 No. 15 Eagle Camera \$40.00
- 1 No. 2½ Tripod 4.00
- 100 Post cards ¾ x 5½ 3.00
- 100 Post cards 3 x 4½ 2.50
- 100 B. B. cards 2½ x 3½ 1.30
- 100 B. B. cards 1¾ x 2½65
- 100 Mounts 2½ x 3½45
- 100 Mounts 1¾ x 2½25
- 4 Developer 1.00
- 1 Graduate Glass25
- 1 Pair Tweezers25
- 100 Buttons60
- 100 Button Frames 1.50

Complete Outfit \$55.50

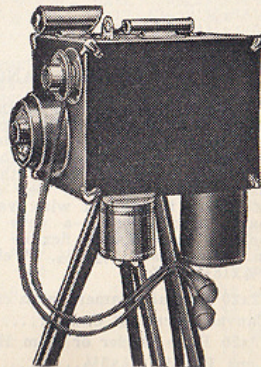
NO. 25 EAGLE COMBINATION CAMERA

Camera weighs 9 lb., measures 8 x 10 x 8; has two anastigmat lenses and will take pictures under all conditions of light and weather; takes 1¾ x 2½, 2½ x 3½ post cards and tintypes through a sleeve and button plates automatically, which makes this camera the fastest and best ever produced, for the One Minute Photo Line.

This is a combination of A. No. 15 Eagle Camera and a Button Camerascope. These cameras are equipped with high speed, double anastigmat lenses. The button lens has a fixed focus, the square plates has a focusing jacket, automatic bulb or wire release shutters; has two tubular finders, reversible brass plate holder and rubber tanks.

- Price of camera \$60.00
- Plates 1¾ x 2½ per 100 .65
- Frames per 100 .25
- Plates 2½ x 3½ per 100 1.30
- Frames per 100 .40
- Developer, either can or package25
- Tripod 3.50

Complete outfit, with enough supplies to make 300 pictures, 100 each size, \$69.00.

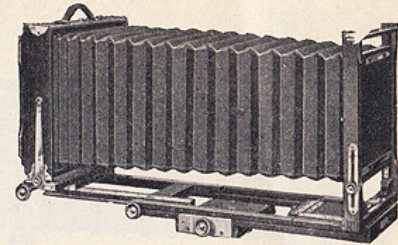


C

KORONA PICTORIAL VIEW CAMERAS

Here is a good camera for all around work. Large front board, sliding extension attached to camera, bed block to balance on tripod, long bellows for copying. The 3¼x4¼ has a leather bellows, larger size has leatherette bellows. Carrying case is leatherette with metal corners.

	5 x 7	8 x 10
Lens Board	5¼ x 5¼	7¼ x 7¼
Bellows Length	21 in.	29 in.
Weight of Camera	5¾ lb.	11 lb.
Weight of Case	3½ lb.	7½ lb.
Pictorial View Camera with case and holder	\$50.40	\$66.10
Extra charge for leather bellows ..	2.70	4.50
Plate holders or film holders	2.03	2.48
Lens boards90	1.25



KORONA VIEW CAMERAS

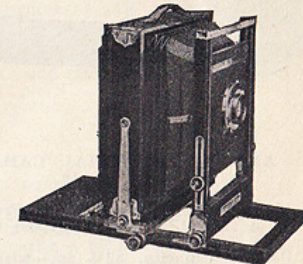
The Korona View represents many years of evolution and improvement resulting in a standard type of camera with many refinements in construction, design and finish, which the experienced photographer will appreciate.

Walnut finish, metal parts nickel plated, reversible back, spring acting pivoted ground glass frame, double swings, rising and falling front with rack and pinion, sliding panel in back, detachable lens boards, bed brace, automatic back stop, leatherette bellows lined with rubber cloth.

	4 x 5	5 x 7	6½ x 8½	8 x 10	7 x 11	11 x 14
Lens boards..	4 x 4	4½ x 4½	4½ x 4½	6 x 6	6 x 6	6¾ x 6¾
Bellows length	20 in.	24 in.	28 in.	32 in.	34 in.	42 in.
Weight	4½ lbs.	6½ lbs.	7 lbs.	9 lbs.	10½ lbs.	15 lbs.

The 7 x 11 size has a lateral front adjustment which is not a feature of the other sizes.

Outfit includes carrying case and one plate holder.
 4x5....\$39.95 5x7....\$44.85 6½x8½....\$49.30 8x10....\$51.65 7x11....\$56.75 11x14....\$81.40



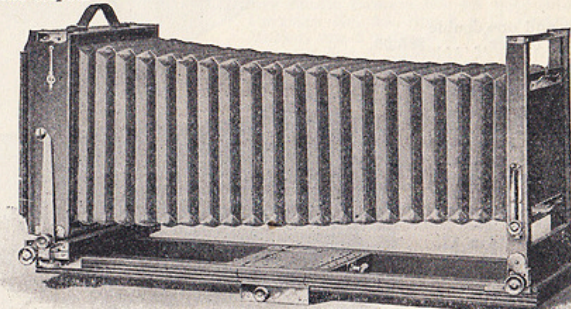
EASTMAN VIEW CAMERA (11x14)

For making 11 x 14 negatives we supply this instrument. It is of most substantial construction. Bellows draw 37 inches. Lens board—5¾ x 5¾. Outside dimensions closed—19¾ x 17¾ x 5¾.

Eastman View Camera, with carrying case and one Plate or Film Holder.....\$106.25
 Write us regarding Lenses for the above cameras or see Lenses on page 99

EASTMAN VIEW CAMERAS NO. 2D

5 x 7 6½ x 8½ 8 x 10 7 x 11
 Cameras that are built for service but are handsome in design and finish. They have every adjustment of practical value, large front boards, bellows supports and a sliding tripod block for centering the weight of the camera over the tripod.



	5x7	8x10	7x11
Bellows draw.....	23 in.	29½ in.	31 in.
Weight	7 lb.	11¼ lb.	15½ lb.
Lens board	4½x4½ in.	6x6 in.	13½x6¼ in.
Size closed	11¾x9¾x5¼"	14¾x13x5¼"	16x13½x8¾"

Eastman View Camera No. 2-D with Carrying Case and one Eastman View Plate or Portrait Film Holder..... \$51.00 \$59.50 \$61.20

- Outfits**
- 5x7 2 D Eastman View Outfit, same as above, but with Ross XPRES F.4.5 lens in barrel and anastigmat 7¼ in. Compur shutter, and one square yard focus cloth.....\$ 94.00
 - 5x7 2 D Eastman View Outfit, same as above, but with Ross XPRES F.4.5 lens in barrel and Packard shutter No. 6, especially suitable for home portrait work..... 114.25
 - 8x10 2 D Eastman View Camera, case, one holder, combination 12 in. Symar double anastigmat lens in compound shutter, and one square yard focus cloth..... 139.50
 - 8x10 2 D Eastman Outfit, same as above, but with 12 in. Ross XPRES F.4.5 lens and Packard shutter No. 6, for home portrait work..... 208.25
- (Please state whether you want film or plate holder. Other outfits made up and quoted on request)

C

ANSCO UNIVERSAL VIEW CAMERAS

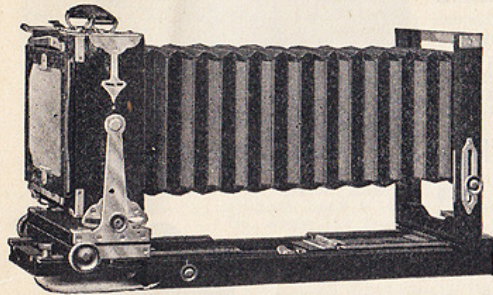
3 1/4 x 4 1/4, 5 x 7 and 8 x 10

These are the new Ansco view cameras which have received so much favorable comment at conventions and elsewhere. They were designed in response to a general demand for new equipment of this type incorporating better features with greater rigidity and strength. Owners pronounce them the best view cameras made.

Specifications

	3 1/4 x 4 1/4	5 x 7	7x11 or 8x10
Maximum focal capacity.	17	20 1/2	26 1/2
Minimum focal capacity.	4	4	4
Size of lens boards.....	4x4	5x5	7 1/2 x 7 1/2
Cameras	\$53.15	\$55.25	\$63.75
Price of extra holders...	1.35	1.80	2.25
Price of extra lens boards	.90	.90	1.13
7x11 adapter back for 8x10 camera.....	\$16.20		
Same with carrying case.....	21.60		
5x7 adapter back for 8x10 camera.....	15.00		

Case holds camera and three holders and is made of heavy leatherette reinforced with metal at corners



ANSCO COMMERCIAL CAMERA, SIZE 8 x 10

Long Focus, Tilt and Swing Front. A Long-Life, Every-Purpose Camera

Bellows capacity, 32 1/2 in.—with tilt and swing front attachment 39 1/2 in. Shortest focal length 4 1/4 in. Both front and rear focus.

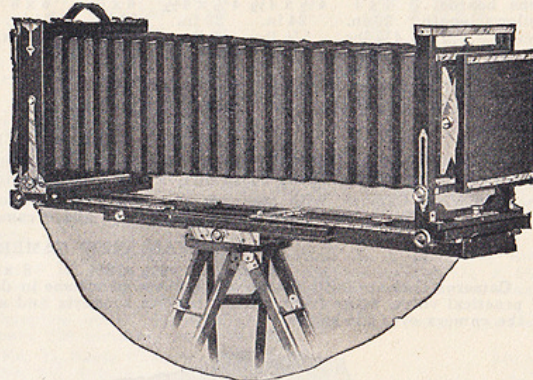
Can be used with or without tilt-swing front, the same 7 1/2 in. front-board being used in either case.

Built durably of cherry and finished in beautiful Adam brown, semi-gloss.

All metal parts of brass, polished and lacquered. Bellows of black leather with gossamer rubber cloth to assure durability and flexibility.

A complete commercial camera with every desirable movement for handling the widest variety of subjects.

Price, complete with case and one double cut film holder or plate holder.....\$85.00



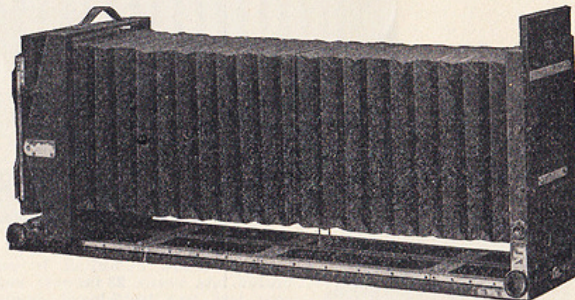
F. & S. COMMERCIAL CAMERA

Meets every requirement of the commercial photographer. Has great bellows capacity and will take lenses of extreme focal length, as well as those of short focus. Rectangular bellows, allowing extreme rising and lowering front. Double swing-back adjustment with excessive swing.

Size of camera closed—8 3/4 x 13 x 17. Lens board—7 x 7. Weight—34 lbs.

Commercial Camera, including Carrying Case and one Sterling Plate, or Portrait Film

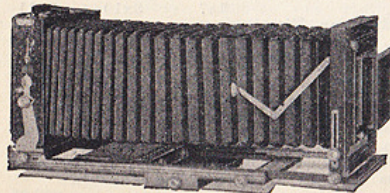
Holder 8 x 10..... \$135.00
11 x 14, same..... 189.00
Carrying Case (black fibre).... 12.00



EASTMAN COMMERCIAL CAMERA (8x10)

A single camera that equips the photographer for practically any work in the commercial field. It accommodates either the extremely long focus lens, or the short focus, wide angle lens. A new feature permits correcting distortion. Heretofore you had to stop the lens down for sufficient depth of focus to compensate for swinging the back. With this camera the lens swing can at all times be kept parallel with the swing of the back. This permits use of the largest stop openings with lenses of sufficient covering power.

Eastman Commercial Camera (without shutter).....\$126.00
Recessed Lens Board, "A"..... 2.50
Sliding Lens Board, "B"..... 5.00



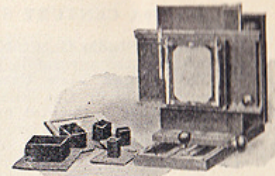
FOLMER MULTIPLE CAMERA

For studios where photographs are made for chauffeurs' licenses, post cards and commutators' passes; at resorts, and for general 5x7 work as well, this new outfit fills a real need. The foremost feature of this new Folmer product is the multiple back. This device is semi-automatic in action—maximum production results with but a minimum expenditure of effort on the operator's part.

A set of six kits or masks is provided so that two, four, nine, sixteen or twenty head and shoulder portraits may be made on a 5x7 film or plate, and there is a kit for four full length portraits, as well. This, of course, is in addition to the straight 5x7 negative for portrait or group work. Moreover, any of these exposures, except the four full lengths, may be made vertically or horizontally simply by transposing the plainly marked spacing rods that control the action of the back, and, of course, reversing the holder in the back. This reversible feature, simple and convenient, accords the camera exceptional versatility.

Specifications: The Folmer Multiple camera is substantially made of cherry and mahogany, dark, hand-rubbed finish; metal parts are sandblasted. The lens board measures 6 3/4 x 6 3/4; focal capacity of camera, 19 in. Weight but 15 lb.; dimensions, closed, 18x16 1/2 x 23 in.

Folmer Multiple Camera with set of six kits and one 5x7 film or plate holder (without lens or shutter) \$76.50
Complete as above and with No. 34 Kodak Anastigmat F.4.5 lens (8 1/2 in.) and Compound Shutter... 153.05
Extra 5x7 film or plate holders, each..... 2.40
Extra lens boards, each..... 1.25

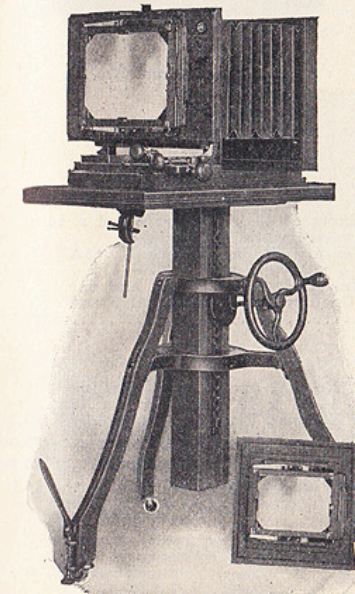


CENTURY STUDIO OUTFIT NO 4A (8x10)

This outfit is designed especially for work in a confined space. Though compact, it is complete in every respect. The Century Studio Camera No. 4 with a bellows draw of 22 inches and 9 x 9 lens board, is provided with liberal swing, both vertical and horizontal. Fitted with a Sliding Ground Glass Carriage permitting ready making of a full 8 x 10 negative or of two 5 x 8 exposures on one plate. Regular equipment also includes one 8 x 10—5 x 7 Reversible Adapter with one 8 x 10 and one 5 x 7 Eastman View Plate or Eastman Portrait Film Holder.

The stand is the Century No. 4A. Century Studio Outfit No. 4A complete consists of an 8 x 10 Century Studio Camera No. 4A, with Sliding Ground Glass Carriage No. 4A, one 8 x 10—5 x 7 Reversible Adapter with one 8 x 10 and one 5 x 7 Eastman View Plate or Portrait Film Holder, and the Century Studio Stand No. 4A.....\$135.00

When furnished separately.
Century Studio Camera No. 4A with Sliding Ground Glass Carriage No. 4A, one 8 x 10 Eastman Plate or Film Holder, one 8 x 10—5 x 7 Reversible Adapter—including one 5 x 7 Eastman Plate or Film Holder..... 94.50
Sliding Ground Glass Carriage, No. 4A with one 8 x 10 Eastman View Plate or Portrait Film Holder..... 31.50
8 x 10—5 x 7 Reversible Adapter, including one 5 x 7 Eastman View Plate or Portrait Film Holder..... 14.40



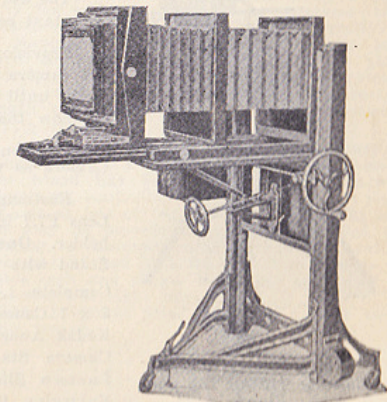
ANSCO NO. 5 STUDIO OUTFIT

This outfit has proved so adaptable and so satisfactory for all classes of studio work that we have discontinued the build-

ing of other models except on special order. Photographers who have discarded other equipment for it say that it gives a new thrill to a routine operation. This is because of its complete responsiveness to the operator's need of the moment, when convenience of adjustment means so much. To this convenience are added accuracy, rigidity, and quietness of movement, with substantial construction and a richness in cabinet work and finish which is professional to the last detail.

Raising, lowering, tilting, swings, bed extension, rough and fine focusing actions—in fact, all desired features—are present, and for long-focus work the bellows has a draw of 40 inches. For such work the camera may be run forward on the platform if desired, bringing all movements within as easy reach from focusing position as when using smaller lenses that do not require so much bed extension. Equipped with reversing sliding ground glass attachment for 8 x 10 double plate or film holders, 5 x 8 diaphragm, and reversing adapter for 5 x 7 holders, with 3 1/2 x 5 diaphragm. Space for adapter on front of stand, so that it will not get stepped on or mislaid. Holder rack is provided also. The outfit is beautifully finished in Adam brown.

Price complete, with one holder each 8 x 10 and 5 x 7...\$155.25
Extra holders for either plates or cut films, as desired,
8 x 10 2.25
5 x 7 1.80





EAGLE ANHYDROUS SULPHITE SODA
Tested

Manufactured Especially for Photographic Purposes. It is of the first importance that sodas used for making developer should be absolutely pure so as to obtain uniform results.

Our Eagle anhydrous sulphite we guarantee to be photographically pure, always uniform and not to lose strength by age. It will be found a very satisfactory article.

1-pound bottle	\$0.35
1-pound can25
5-pound bottle	1.15
5-pound can	1.05
25-pound can	4.05
100-pound can	11.50

EAGLE MONOHYDRATED CARBONATE SODA (Dried)
Tested.

Manufactured Especially for Photographic Purposes. Double the strength of the crystals, therefore use only one-half the quantity in any formula calling for crystals. Should be used in connection with our anhydrous sulphite to produce the best results. It is an article upon which the photographer can depend.

1-pound bottle	\$0.25
1-pound can21
5-pound bottle85
5-pound can72
25-pound can	2.95
100-pound can	7.50



DEVELOPING AGENTS

	1 Ounce	1/4 Lb.	1/2 Lb.	1 Lb.	5 Lb.		1 Ounce	1/4 Lb.	1/2 Lb.	1 Lb.	5 Lb.
Acrol	.55	1.95	3.50	6.50	Kodolon	.42	1.45	2.75	5.25	24.00
Activol (see below)	Metol (Johnson)	.50	1.70	2.93	5.60	25.00
Aduro (Hauff)	.65	2.50	4.50	8.50	Metol (Hauff)	.50	1.80	3.38	6.30	30.80
Amidol (Johnson)	.50	1.80	3.38	6.30	30.00	Metol (Agfa)	.50	1.80	3.38	6.30	30.80
Amidol (Agfa)	.50	1.80	3.38	6.30	Ortol (Hauff)	.59	2.25	4.05	7.65
Amidol (Hauff)	.50	1.80	3.38	6.30	Ortol (Agfa)	.50	1.80	3.38	6.30
Athelon	.59	1.76	6.08	Paramidophenol	.45	1.40	2.75	5.00
Cummime No. II	2.40	Photol	.50	1.80	3.40	6.30
Dianol	1.00	3.50	12.00	Pietol (Mallinckrodt)	.48	1.36	2.63	5.10	22.50
Eagetol (see below)	Pyro-Resublimed (Eagle)	.28	.75	1.25	2.35	11.00
Edinol	.55	2.00	3.75	7.00	Pyro-Crysta's (Eagle)	.25	.60	1.00	1.85	8.75
Elon (Eastman)	.48	1.36	2.63	5.10	22.50	Pyro-Crystal (Eastman)	.25	.60	1.00	1.85	8.75
Glycin (Johnson)	.50	1.71	3.30	6.30	30.00	Rodinal (see below)
Glycin (Hauff)	.50	1.80	3.38	6.30	Roylon	.55	2.00	3.50	6.50
Glycin (Agfa)	.50	1.80	3.38	6.30	Rhodol	.48	1.45	2.75	5.35
Hydrochinone (Eagle)	.21	.57	1.00	1.80	8.55	Satrapol	.45	6.50
Hydrochinone (Eastman)	.23	.65	1.15	2.00	9.25

Developers in Tabloid Form, see Tabloid, page 179

ACTIVOL

A universal liquid developer for all purposes. Dish, stand or tank.

3 oz. bottles, each\$0.54	8 oz. bottles, each\$0.99	16 oz. bottles, each\$1.80
---------------------	-------------	---------------------	-------------	----------------------	-------------

EAGETOL

An American made Developing Agent. Has speed and remarkable lasting quality. Gives the rich blue-black tone so much desired. An ounce of Eagetol Solution will give a greater number of perfect prints than any other developer we have ever tested.

Per oz.\$0.45	Per 1/4 lb.\$1.05
Per 1/2 lb.3.10	Per lb.5.50

(Agfa) RODINAL

3 ounces\$0.54	8 ounces\$0.99	16 ounces\$1.80
.....	12-16 ounce bottles, each\$1.00

INDEX

THE articles in this catalogue are arranged alphabetically, A, B, C, &c., with reference headings under each letter. This is a quick and convenient method of locating any article.

If you are interested in any particular subject, as, for example: Projection Apparatus, or X-Ray Goods, look under "P" or "X," as the case may be, and you will find the various articles referring to your subject listed, even if you do not know their trade name.

Factory costs fluctuate, and prices quoted in this catalogue represent costs at time of issue, therefore PRICES ARE SUBJECT TO CHANGE WITHOUT NOTICE.

We are not responsible for goods after being delivered to the Post Office, Express Company or Railroad. However, we insure under our open policy all parcel post packages against loss or damage in the mail.

When ordering to be sent C. O. D. we require a deposit on the order sufficient to cover transportation both ways.

Prices quoted are F. O. B. Our Store, except when otherwise specified in the catalogue.

We solicit your valued orders, and can assure you that same will have our careful and prompt attention.

Prices quoted are for cash with order. All discounts have been deducted.
General Index on page 211

GENERAL INDEX

A	Cleaner43, 77, 97	Film Cement70
	Clips43, 44, 205	Film Packs69
	Clocks44, 45	Film Sheaths70
	Cloth45, 46	Film, Texture71
	Collodion46	Films68-70
	Colors41, 47, 50	Films, X-Ray206
	Coloscope50	Filters, Ray71-74
	Copylite51	Finders74, 75
	Corners136	Finger Tips74
	Corrugated Board51	Fitting Tool75
	Cotton, Absorbent51	Fixing Boxes75, 76
	Couplers175	Fixing Solutions76, 179, 206
	Cover Glass95	Flanges97, 98
	Crayon Sauce49	Flash Bags77
	Cummime210	Flash Cartridges82
	Art Gum4	Flash, Cleaner77
	Autochrome147	Flash Lamps77, 81
			Flash Powder81
B			Flash Sheets81
	Baby Holder5, 6	Focusing Cloth82
	Backgrounds6-11	Focusing Glass Holder122
	Background Carrier13	Foot Switch95
	Background Print-in11	Foregrounds, Comic12
	Backing13	Forms, Brass83
	Backing Cloth45	Frames83
	Balopticans161, 162	Funnels84
	Bath Holders13, 14	Furniture84-86
	Bench85, 86		
	Biascope53	G	
	Binders14	Dies, Embossing58, 59
	Binoculars14, 15	Diffusion Disks53
	Bleachers20	Dippers53
	Blotters15	Display Racks53
	Blue Print Powders15, 16	Distograph53
	Bolting Cloth46	Distance Indicator53
	Books16-18	Dryers53-55
	Bottles18	Dry Mounting56
	Boxes, Storage143	Duplicators56
	Bromide Solution18	Dyes56, 57
	Bromoil Supplies19-22		
	Brushes21, 22	E	
	Bulb and Tubing174, 175	Eagetol210
			Easel, Table57
C			Edinol210
	Cabinet, Film70	Eickonogen210
	Cameras22-38	Electric Bulbs92, 93
	Cameras, Movie126-132	Elon210
	Cameras, Color27	Embossers57-59
	Camera Dressing97	Enlargers60-63
	Camera Stands38, 39	Envelopes63, 64
	Camera Stand Jack39	Envelopes, X-ray205
	Candles39	Eradicator, Color50
	Canvas, Art140	Etching Tank186
	Caps, Flash77, 80	Etching Tools64, 65
	Caps, Lens97	Evaporating Dishes65
	Carbons40	Exposure Meters65-67
	Carbon Supplies40, 42	Exposure Rule205
	Carboys18	Eye Rest67
	Cardboard134		
	Carrying Cases42	F	
	Celluloid43	Fabric67
	Cement, Film70	Fans67
	Chairs84-86	Fasettos57
	Changing Bags43	Faucet Connections203
	Charcoal43	Ferrotypes Plates150
	Chart, Color41	Files67, 68
	Chemicals208	Film Cabinet70
			J	
			Jacks39
			Jars91
			Jellitac144
			Jugs88

LP1137

K		Paper, Oil19	Sheaths70	
Kilns, China41	Papers19, 139-143, 207	Shutter, Coupler175	Shutter Extension175	
Kits92	Paper Transfer20	Shutter Release175, 176	Shutters171-174	
Knife20, 91	Paramidophenol210	Silver Bath13, 14	Silver Precipitant176	
Kodalak203	Passe-Partout Goods144	Sinks185	Sizing Solution50	
Kodaloid92	Paste144	Sleeve Projectors176	Smocks176	
Kodapod196	Pencils144, 145	Soline170	Spirit Sensitizer41	
Kodelon210	Photo-Flat160	Sprayers20	Squeeze Boards41	
L		Photomailers146	Squeeze Plates177	
Lamps, Darkroom93, 94	Photocript188	Squeezee Solutions177	Squeezees176	
Lamps, Electric92, 93	Pictol210	Stereoscopes177	Stirring Rods177	
Lamps, Lighting114, 122	Pigments19	Stipple176	Studio Registers177, 178	
Lantern, Enlarging62	Pitchers146	Stumps20	T	
Lantern Slide Goods95, 96	Plates, Dry147-150	Table, Projection163	Tabloid Preparations179	
Leads, Retouching144, 145	Plates, Ferrottype150	Tanks180-186, 207, 208	Tanks, Movie133	
Leather, Dressing97	Plates, X-Ray207	Tape46, 179	Telemeter187	
Lens Adapter98	Pockscopes15	Test Chart72	Thermometers188	
Lens Boards97	Polishing Solution150	Thinners19	Thimb Tacks163	
Lens Caps97	Portrait Attachments112, 113	Timers44, 45, 155	Timers, Self170	
Lens Cleaner97	Press, Transfer20	Titling Outfits188	Titling Strips96	
Lens Flanges97	Printers151-155	Tong, Print160	Toning Solution189	
Lens Hoods98	Printers, Movie133	Topping Powder189	Tozol210	
Lenses99-112	Printing Frames155-158	Tracing Cloth46	Tray Coatings191	
Lenses, Condensing112	Print Lustre203	Trays189-191, 207	Treepods196	
Lenses, Supplementary112, 113	Print Paddles158	Trimmers191, 192	Tripod Accessories196	
Levels114	Print Roller158, 159	Tripods193-195	Tripods, Movie132, 133	
Lights114-122, 206	Print Straightener159	V		
Loading Fixture186	Print Tongs160	Varnish166, 197	Vignettters197, 198	
M		Visc, Lantern Slide97	W	
Magnesium Powder81	Probos160	X		
Magnesium Ribbon81	Projectors128-132, 160-162	Washing Boxes199-203		
Magnifiers122, 123	Proofing Machine155	Washing Machines202-203		
Marl124	Pump, Air2	Waxing Solution41, 203		
Masks124, 125	Punch153	Weighmeter169		
Metallic Points146	Push Pins163	Weights169		
Metol210	Pyro210	Wringers204		
Microscopes123	Q		Washing Boxes199-203	
Mirrors126	Quickdry55	Washing Machines202-203		
Mortar and Pestles126	R		Waxing Solution41, 203	
Mounts134-136	Racks, Developing187	Weighmeter169		
Movie Cameras126-132	Radio Mats96	Weights169		
Multiplex56	Ray Filters71-74	Wringers204		
N		Re-developers52	Washing Boxes199-203	
Negative Marker137	Reducers163, 164	Reducing Glass164	Washing Machines202-203	
Negative Pockets137	Reducing Solution166	Reflectors114, 164, 165	Waxing Solution41, 203	
Negative Preservers137	Rhoda'210	Retouching Desks166	Weighmeter169	
Negative Racks137, 138	Rocker System202	Retouching Frames165, 166	Weights169	
Nostane138	Rodinal210	Retouching Machine165	Wringers204	
Numbering Machine137	Royaline170	Retouching Outfits166	Washing Boxes199-203	
O		Retouching Screens165	Washing Machines202-203	
Oil Supplies19-22	Rubber, Mastic20	Retouching Solution166	Waxing Solution41, 203	
Opaque138	Rubber Solution167	Rhoda'210	Weighmeter169	
Optipod196	Rubiline167	Rocker System202	Weights169	
Ortol210	S		Wringers204	
Outfits, Air Brush2	Safelights94	Rodinal210	Washing Boxes199-203	
Outfits, Bromoil21	Scales167-169	Royaline170	Washing Machines202-203	
Outfits, Carbon41	Screens, Projection169, 170	Rubber, Mastic20	Waxing Solution41, 203	
Outfits, Carbro42	Self-Timer170	Rubber Solution167	Weighmeter169	
Outfits, Oil20	Sensitizing Solution170	Rubiline167	Weights169	
Outfits, Printing139	Sepia Solution170	S		
P		Sharpener, Retouching171	Washing Boxes199-203	
Paddle Print158	Sharpener, Retouching171	Washing Machines202-203		
Pakodoper52	X		Waxing Solution41, 203	
Pallettes20, 50	X-Ray Goods205-208		Weighmeter169	

DEVELOPING - PRINTING - ENLARGING COPIES - LANTERN SLIDES

Our facilities are better than ever for properly handling your finishing and all orders are given prompt and careful attention.

It Will Pay You to Give Us a Trial

30 Hour Service on Roll Film and Film Pack Developing		Enlargements One Week Developing	
Roll Film		Plates and Cut Film	
All sizes, Rolls—6 ex.....	\$0.10	4 x 5 or smaller Plate or Film.....	\$0.05
All sizes, Rolls—10 and 12 ex.....	.15	5 x 7 or smaller Plate or Film.....	.10
Film Packs		8 x 10 or smaller Plate or Film.....	.20
Up to 2 1/4 x 3 1/4.....	.25	X-Ray Plate or Film.....	.50
3 1/4 x 4 1/4 to 4 x 6.....	.30	11 x 14.....	.75
5 x 7.....	.50		

PRINTING Glossy & Semi-Matte

	S. W.	D. W.	Sepia	M't'g Extra
V. P. K. or smaller.....	\$0.04	\$0.06	\$0.06	\$0.03
Brownie No. 1 and 2 (No. 117 and 120)...	.05	.07	.08	.03
1-A (No. 116).....	.06	.08	.09	.05
3 1/4 x 4 1/4 (No. 118 and 124).....	.07	.08	.10	.05
3 1/2 x 3 1/2 (No. 101).....	.07	.08	.10	.05
2-C (No. 130).....	.07	.09	.10	.06
3-A (No. 122) (and 9 x 12 cm.).....	.08	.09	.10	.06
4 x 5 (Nos. 103, 104, 123).....	.09	.10	.10	.06
4 1/4 x 6 1/2 (No. 126).....	.15	.20	.25	.07
5 x 7.....	.15	.20	.25	.10
5 x 8.....	.20	.25	.30	.10
6 1/2 x 8 1/2.....	.25	.30	.40	.15
8 x 10.....	.25	.30	.50	.15
11 x 14.....	.35	.40	.65	.25
Post Cards.....	..	.08
Post Cards per 100.....	..	6.00
Stereos 3 1/2 x 7.....	.15	.20	.25	.15
Panorams (small).....	.10	.20	.30	.15
Panorams (large).....	.20	.30	.85	.15

ENLARGING

	Plain B. & W.	Plain Sepia	Plain B. & W.	Plain Sepia	Art Proof	Art Proof
Size	Unmounted	Mounted	Unmounted	Mounted	Buff & White	Sepia
3 1/4 x 5 1/2 (or P. C.)	\$.25	\$.35	\$.40	\$.50	\$.75	\$1.00
5 x 7.....	.35	.45	.50	.60	.75	1.00
6 x 8.....	.50	.65	.75	.90	1.00	1.25
6 x 10 or 8 x 10.....	.60	.75	.85	1.00	1.25	1.50
11 x 14.....	1.00	1.25	1.50	1.75	2.50	3.00
14 x 17.....	1.75	2.00	2.50	2.75	2.50	3.50
16 x 20.....	2.50	3.00	3.00	3.50

Grade "A" Copying

No Air Brush or Retouching		Lantern Slides	
5 x 7 or smaller, Best Work.....	\$1.50	Slides B. and W. from neg.....	\$0.60
8 x 10 Best Work.....	3.00	Sepia Slides.....	.65
11 x 14 Best Work.....	4.50	Slides and copy neg. from prints.....	1.00
(One print included with copy)			

Plain copies of Kodak prints can be made at 75c. each, including one print. This, however, must not be confused with our Grade A work.

For Special Work Estimates Will Be Given

PROMPT ATTENTION TO MAIL ORDERS

Send for Separate List of Color Work, Miniatures, etc.

We make a specialty of mounting in Albums. We are always ready to offer suggestions—and to quote lowest prices on any kind of special work.

Good Work, Prompt Service, Our Motto