

*Tri. Int. P.R.L. Sq. Rel.*

# EVERYTHING PHOTOGRAPHIC

*Established 1878*



MORE THAN HALF A CENTURY OF SERVICE  
TO BOTH THE  
AMATEUR AND PROFESSIONAL PHOTOGRAPHER

## GEORGE MURPHY, Inc.

57 EAST 9th STREET

∴

NEW YORK

# Photographic .. Materials..

♦ ♦  
Mail Order  
Catalogue  
No. 134

—◆◆—  
*Everything Photographic*  
—◆◆—

EXCLUSIVE HANDLERS OF  
PHOTOGRAPHIC MATERIALS

## GEORGE MURPHY, Inc.

ESTABLISHED 1878

57 EAST 9th STREET

NEW YORK

We manufacture in our own factory original styles of mounts and folders

WE are American Agents, hold exclusive patents or manufacture, under agreement with patentee, the following articles:

- Autotype Carbon Tissue,
- Autotype Dybro Materials,
- Wynne Exposure Meters,
- Nego Products,
- Backgrounds—Rough & Caldwell,
- Housh Albums, (Greater New York)
- Sprague & Hatheway Products, (Greater New York)
- Penrose Process Year Book,
- Watkins Specialties,
- Cornell Lens Hood,
- No-Slip Masks,
- Rounds' Baby Holders,
- Olmstead Lantern Slide Mats,
- Royal Foreground Ray Screen,
- Star Negative Files.

PRICES QUOTED ARE FOR CASH WITH ORDER. ALL DISCOUNTS HAVE BEEN DEDUCTED

Prices Subject to Change Without Notice

### Our Guarantee

We guarantee all our goods to be exactly as represented in this catalogue. We also send them with the understanding that if they are not perfectly satisfactory to the purchaser and are returned to us immediately unused (except books and air brushes), we will refund the money paid for same less the transportation charges.

Our aim is pleased customers who will recommend us to others.

**GEORGE MURPHY, Inc.**  
57 EAST 9th STREET NEW YORK

MAY, 1934

### INDEX

GENERAL INDEX PAGE 211

THE articles listed in this catalogue are arranged alphabetically, A, B, C, &c., with reference headings under each letter. This is a quick and convenient method of locating any article.

If you are interested in any particular subject, as, for example: Projection Apparatus, or X-Ray Goods, look under "P" or "X," as the case may be, and you will find the various articles referring to your subject listed, even if you do not know their trade name.

Factory costs fluctuate, and prices quoted in this catalogue represent costs at time of issue, therefore PRICES ARE SUBJECT TO CHANGE WITHOUT NOTICE.

We are not responsible for goods after being delivered to the Post Office, Express Company or Railroad.

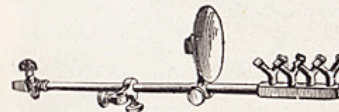
When ordering to be sent C. O. D. we require a deposit on the order sufficient to cover transportation both ways.

Prices quoted are F. O. B. Our Store, except when otherwise specified in the catalogue.

If to be sent by mail when remitting add enough to cover cost of postage and insurance.

PRICES QUOTED ARE FOR CASH WITH ORDER. ALL DISCOUNTS HAVE BEEN DEDUCTED.

We solicit your valued orders, and can assure you that same will have our careful and prompt attention.



Absorbent Cotton, see Cotton, Page 51

#### EAGLE ACETYLENE BURNER

The Acetylene Burner is made with four burners, each having two tips, which produces the floating flame; each.....\$2.00

#### EAGLE ACETYLENE GENERATOR

This is a perfect generator in the simplest form. It is light and compact and easy to operate. The carbide is placed in a wire basket and hung in the inner tank and secured with a catch. The flame produced is perfectly steady and brilliant; each.....\$2.00  
Calcium Carbide—2 pound can......70  
Calcium Carbide—5 pound can......1.70

Acid Hypo, see Fixing Bath, Page 79

#### EAGLE ADHESIVE WAFERS

These wafers are gummed on both sides with a strong adhesive and by their use it is possible to mount photographs without destroying the gloss. They are especially adapted for neatly mounting photographs in albums. Price per box of 100.....\$0.15

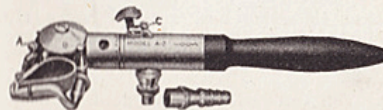


#### AIR BRUSHES AND SUNDRIES

Save the money you are paying others to do your coloring, negative retouching, bromide work, etc.

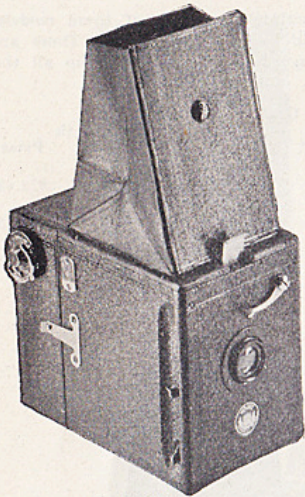
Genuine satisfaction and confidence comes to you the minute you use a Paasche.

Develop individuality in your pictures by using Model "A," the most accurate and wonderful artist tool for producing artistic and skillful work.



- Paasche Air Brush, Model A—For work on small heads.....\$35.00
- Paasche Air Brush, Model FF1—For large heads and backgrounds.....12.50
- Paasche Air Brush, Model M—From hair line to broad spray.....21.50
- DeVilbiss Air Brush, Model AB601.....22.00
- Fountain Air Brush, Model A—For general use.....25.00
- Wald Air Brush, Model B—For backgrounds.....27.50
- Wald Air Brush, Model A1—For fine work.....22.00
- Wald Air Brush, Model U—For line or broad spray.....25.00
- Air brush tubing, covered, per foot......10
- Paasche Air Brush, Needles for Model A Brush, per dozen......76

C



Paff Reflex

**PAFF REFLEX**

The Paff Reflex Camera combines every feature that makes photography simple and accurate. It is a box camera with a fixed focus lens, obviating the necessity of focusing the instrument for varying distances.

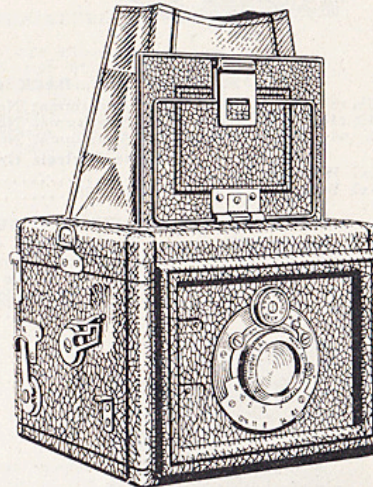
The optical equipment with which the Paff is provided is unusually fine. It consists of a high-speed, highly corrected f:6.8 fixed focus Hugo Meyer lens, approximately four times as fast as the usual box camera lens. Uses roll film 2 1/4 x 2 1/4, No. 117 roll. Price of Camera complete with lens.....\$8.35

**BROOKS REFLEX**

For Film Packs, Plate or Cut Film, 2 1/4 x 3 1/4 Inches

For the first time a really efficient Reflex Camera is offered at a price range within the reach of the average amateur. This camera represents the very latest refinements in optical and mechanical construction. Light, compact, precise and quick, this instrument is not only a real mirror reflex but can be used as an ordinary camera as well. Weight approximately 2 lb. Dimensions, 5 x 4 x 5 in. Complete with shoulder strap, film pack adapter and cable release.

- With 4 1/4-in. Hugo Meyer f:4.5 objective (front lens focus) in Pronto shutter with delayed action feature ..... \$35.75
- Extra Plate Holders, each ..... .75
- Portrait Attachment for close-up work..... 4.60



**CLINICAL CAMERA**

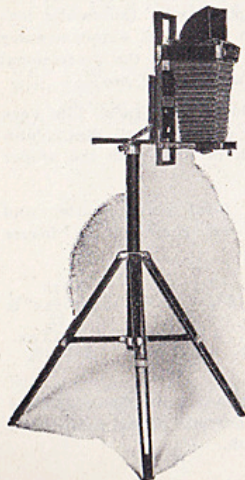
The use of photography as a means of clinical record is becoming more important each year.

Provision is made for photographing to a definite scale—by setting the camera to the desired scale and simply moving the camera back and forth, until the subject is in focus, a series of photographs can be made to show the changed condition over a period of time.

Lantern slides can be made from negatives made with the Clinical Camera as well as from Radiographs.

Eastman Clinical Camera including 5 x 7 Camera. Kodak Anastigmat Lens F7.7 in No. 2 Kodamatic Shutter. One double 5 x 7 cut film or plate holder. One Lantern Slide Back and one Enlarging Back. Collapsible Stand with tilting top. Two Eastman Floodlights.

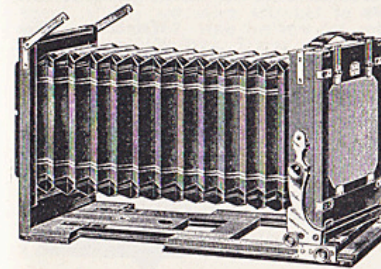
- Complete .....\$139.50
- 5 x 7 Camera only, without lens..... 63.00
- Kodak Anastigmat Lens F7.7 fitted to No. 2 Kodamatic Shutter..... 33.75
- Camera Stand ..... 18.00
- Lantern Slide Back..... 12.60
- Enlarging Back ..... 12.60



Eastman Clinical Camera Showing Tilting Top and Stand

C

**EAGLE IMPROVED HOME PORTRAIT OUTFIT**



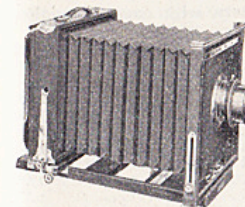
The camera body is constructed on the compact type, having square front and rear frames; square protecting bed which protects the ground glass when closed, but when in use the central portion of this back slides forward under the camera proper, making an extremely rigid bed in which the weight of the camera can readily be centered on the tripod by moving the sliding portion to adjust its position. A simple and easily controlled SWING BACK is provided at the center under the ground glass frame for side swing and the usual centered vertical swing gives the camera "DOUBLE SWING" in all directions. The camera bed is provided with the latest type of staggered rack operated by a gear controlled by the usual large knurled screw at the right-hand side of camera body, permitting a rapid and accurate focusing without back lash. On the opposite or left-hand side of camera a setscrew is provided to set the focus and prevent movement by jarring.

Front of camera is provided with extra large front board with extra wide range shifting in all directions controlled by setscrews.

- No. 0. Eagle Improved Home Portrait Outfit, no lens, one holder and canvas case, size 5 x 7, walnut \$29.50
- No. 1. Mahogany Finish, 5 x 7..... 35.00
- No. 2. Walnut Finish, 8 x 10..... 57.50
- No. 3. Mahogany Finish, 8 x 10..... 62.50
- Plate or Cut Film Holder, 5 x 7..... 2.25
- Plate or Cut Film Holder, 8 x 10..... 3.00
- Canvas Case only for 5 x 7 outfit..... 5.00
- Canvas Case only for 8 x 10 outfit..... 7.00

**KORONA HOME PORTRAIT CAMERA**

It fulfills very nicely the need of a light compact portable camera for home portraiture or for use in small studios, either private or professional. Including all the regular adjustments and Korona features it has a lens board of ample size to accommodate lenses of the largest aperture. It is made entirely of selected cherry, finished in walnut, and all the metal parts are made of brass, nickel plated. The short canvas case, lined with canton flannel, takes the camera and six holders in 5x7 size and three holders in 6 1/2 x 8 1/2 and 8x10 size.



Size	Bellows Length	Lens Board	Weight
5x7	13 1/2 in.	6x6	5 lb.
6 1/2 x 8 1/2	16 1/2 in.	7x7	6 lb.
8x10	18 1/2 in.	9x9	8 lb.

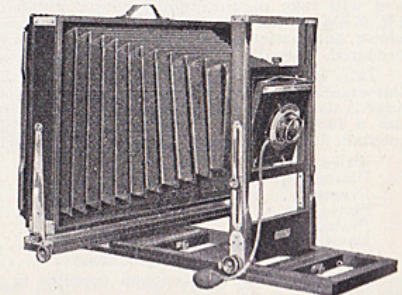
  

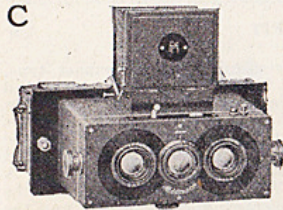
	5x7	6 1/2 x 8 1/2	8x10
Korona Home Portrait Camera, case and holder.	\$40.40	\$45.10	\$46.95
Plate or Film Holder.....	2.05	2.25	2.50
Lens Boards .....	.90	1.00	1.25

**KORONA BANQUET CAMERA**

We have incorporated in the construction of this camera many ideas suggested by expert commercial photographers and primarily it is intended for taking flashlights of banquets and large groups, but there is no reason why it cannot be used for many other purposes as it has all the usual adjustments of a view camera. This camera is made of cherry throughout with walnut finish and has all metal parts nickel plated—a very handsome combination. The holders have double flexible valves. Bellows length 22 3/4 in. Lens board 5 1/2 x 5 1/2. Weight 18 lb. Dimensions closed, 7 1/4 x 18 1/2 x 23 1/4.

- 12x20 Banquet Camera with case and holder.....\$100.30
- Extra Canvas Carrying Cases..... 9.90
- 12x20 Plate Holder or Film Holder..... 10.80
- Lens Boards, 5 1/2 x 5 1/2..... 1.00





**HEIDESCOPE STERO CAMERA**

The choice of the most exacting workers in this fascinating branch of photography. With the new reflecting focusing finder, complete with plate magazine, adapter and case.

45x 107 mm. Zeiss F.4.5 lenses 5.5 cm.....	Weight	Price
Ditto but 6x 13 cm. F.4.5 lenses 7.5 cm.....	20½ oz.	\$250.00
	27¼ oz.	250.00

**ROLLEIDESCOPE CAMERA**

Same equipment as the Heidescope but uses roll film.  
45x107mm size uses No. 127 film .....\$220.00  
6x13cm size uses No. 120 film..... 250.00

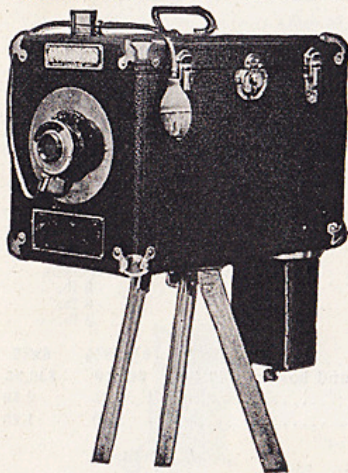
**EAGLE CAMERASCOPE**

It is equipped with a high speed double lens 1.3.5 (60, MM), fixed focus and takes pictures from 5 to 8 ft. distance from the Camerascope. Easy to operate without knowledge of photography after reading instructions.

Weight, 7 lb. Made of solid brass, all nickel-plated, brightly polished. Takes button pictures 1 in. in diameter; capacity over 300 per hour, and works faster than any other machine in the market.

Price of camera .....	\$45.00
Button plates .....per tube 100	1.00
Button frames .....per 100	1.25
Developer package or can of liquid.....	.25
Tripod .....	3.50
Complete Eagle Camerascope outfit, with enough supplies to make 300 pictures, .....	\$57 75

**EAGLE TINTYPE AND QUICK FINISH POST CARD CAMERA NO. 16**



To fill the demand constantly being made upon us by some of our customers for a camera to take regular size post cards in addition to the smaller sizes, we have introduced our new model, the Eagle Camera No. 15, which takes tin plates and post card sizes 1¼ x 2½, 2½ x 3½, 3 x 4½, 3¼ x 5½, and buttons.

The No. 15 Eagle Camera measures 14 x 14 x 8½ and weighs 9 lb. The lens is specially adapted to cut 3½ x 5½ size post cards as well as the smaller sizes, and makes sharp and clear pictures.

Complete outfit No. 15 Eagle Camera with enough supplies to make 500 pictures, consisting of:

1 No. 15 Eagle Camera .....	\$40.00
1 No. 2½ Tripod .....	4.00
100 Post cards 3¼ x 5½ .....	3.00
100 Post cards 3 x 4½ .....	2.50
100 B. B. cards 2½ x 3½ .....	1.40
100 B. B. cards 1¾ x 2½ .....	.70
100 Mounts 2½ x 3½ .....	.45
100 Mounts 1¾ x 2½ .....	.25
4 Developer .....	1.00
1 Graduate Glass .....	.25
1 Pair Tweezers .....	.25
100 Buttons .....	.60
100 Button Frames .....	1.50

Complete Outfit .....

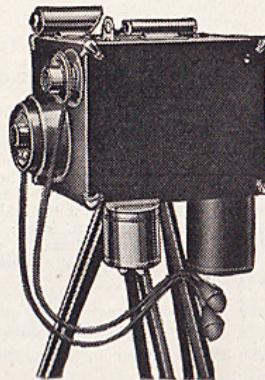
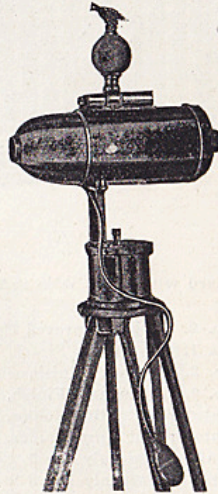
**NO. 25 EAGLE COMBINATION CAMERA**

Camera weighs 9 lb., measures 8 x 10 x 8; has two anastigmat lenses and will take pictures under all conditions of light and weather; takes 1¼ x 2½, 2½ x 3½ post cards and tintypes through a sleeve and button plates automatically, which makes this camera the fastest and best ever produced, for the One Minute Photo Line.

This is a combination of A, No. 15 Eagle Camera and a Button Camerascope. These cameras are equipped with high speed, double anastigmat lenses. The button lens has a fixed focus, the square plates has a focusing jacket, automatic bulb or wire release shutters; has two tubular finders, reversible brass plate holder and rubber tanks.

Price of camera .....	\$60.00
Plates 1¼ x 2½.....per 100	.90
Frames .....per 100	.25
Plates 2½ x 3½.....per 100	1.80
Frames .....per 100	.40
Developer, either can or package.....	.25
Tripod .....	3.50

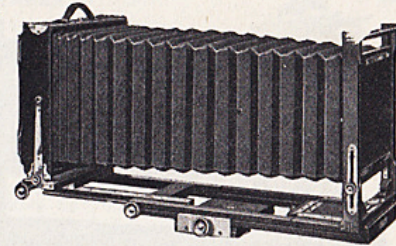
Complete outfit, with enough supplies to make 300 pictures, 100 each size, \$69.00.



**KORONA PICTORIAL VIEW CAMERAS**

Here is a good camera for all around work. Large front board, sliding extension attached to camera, bed block to balance on tripod, long bellows for copying. The 3¼x4¼ has a leather bellows, larger size has leatherette bellows. Carrying case is leatherette with metal corners.

	5 x 7	8 x 10
Lens Board .....	5¼ x 5¼	7½ x 7½
Bellows Length .....	21 in.	29 in.
Weight of Camera .....	5¼ lb.	11 lb.
Weight of Case .....	3½ lb.	7½ lb.
Pictorial View Camera with case and holder .....	\$50.40	\$66.10
Extra charge for leather bellows ..	2.70	4.50
Plate holders or film holders.....	2.05	2.50
Lens boards .....	.90	1.25



**KORONA VIEW CAMERAS**

The Korona View represents many years of evolution and improvement resulting in a standard type of camera with many refinements in construction, design and finish, which the experienced photographer will appreciate.

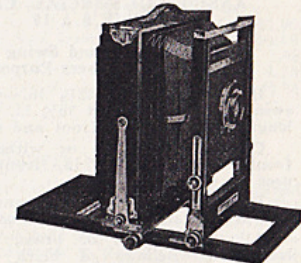
Walnut finish, metal parts nickel plated, reversible back, spring acting pivoted ground glass frame, double swings, rising and falling front with rack and pinion, sliding panel in back, detachable lens boards, bed brace, automatic back stop, leatherette bellows lined with rubber cloth.

Lens boards..	4 x 5	5 x 7	6½ x 8½	8 x 10	7 x 11	11 x 14
Bellows length	4 x 4	4½ x 4½	4½ x 4½	6 x 6	6 x 6	6¾ x 6¾
Weight .....	20 in.	24 in.	28 in.	32 in.	34 in.	42 in.
	4½ lbs.	5½ lbs.	7 lbs.	9 lbs.	10½ lbs.	15 lbs.

The 7 x 11 size has a lateral front adjustment which is not a feature of the other sizes.

Outfit includes carrying case and one plate holder.

4x5....\$39.95	5x7....\$44.85	6½x8½....\$49.30	8x10....\$51.65	7x11....\$56.75	11x14....\$81.40
----------------	----------------	------------------	-----------------	-----------------	------------------



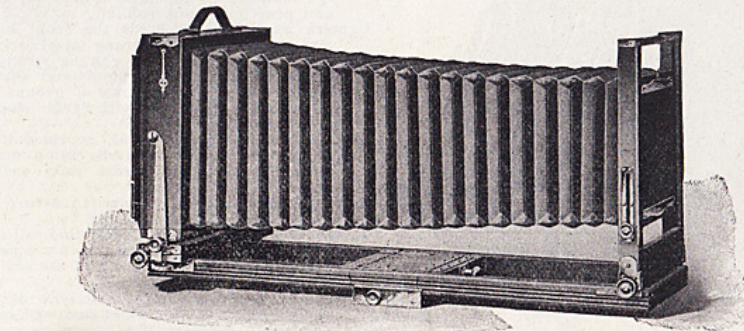
**EASTMAN VIEW CAMERA (11x14)**

For making 11 x 14 negatives we supply this instrument. It is of most substantial construction. Bellows draw 37 inches. Lens board—5¼ x 5¼. Outside dimensions closed—19¾ x 17¾ x 5¾.

Eastman View Camera, with carrying case and one Plate or Film Holder.....\$106.25  
Write us regarding Lenses for the above cameras or see Lenses on page 99

**EASTMAN VIEW CAMERAS NO. 2D**

Cameras that are built for service but are handsome in design and finish. They have every adjustment of practical value, large front boards, bellows supports and a sliding tripod block for centering the weight of the camera over the tripod.



	5x7	8x10
Bellows draw.....	23 in.	29½ in.
Weight .....	7 lb.	11¼ lb.
Lens board .....	4½x4½ in.	6x6 in.
Size closed .....	11¾x9¾x5¾"	14¾x13x5¾"

Eastman View Camera No. 2-D with Carrying Case and one Eastman View Plate or Portrait Film Holder.....\$51.00 \$59.50

C

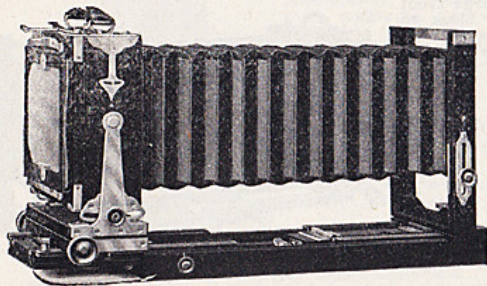
**ANSCO UNIVERSAL VIEW CAMERAS**

5 x 7, 8 x 10 and 7 x 11

These are the new Ansco view cameras which have received so much favorable comment at conventions and elsewhere. They were designed in response to a general demand for new equipment of this type incorporating better features with greater rigidity and strength. Owners pronounce them the best view cameras made.

	5x7	7x11 or 8x10
Maximum focal capacity.....	20 1/2	26 1/2
Minimum focal capacity.....	4	4
Size of lens boards.....	5x5	7 1/2 x 7 1/2
Cameras.....	\$55.25	\$63.75
Price of extra holders.....	2.75	3.00
Price of extra lens boards.....	.90	1.13
7x11 adapter back for 8x10 camera.....	\$16.20	
Same with carrying case.....	21.60	
5x7 adapter back for 8x10 camera.....	15.00	

Case holds camera and three holders and is made of heavy leatherette reinforced with metal at corners



**ANSCO COMMERCIAL CAMERA, SIZE 8 x 10**

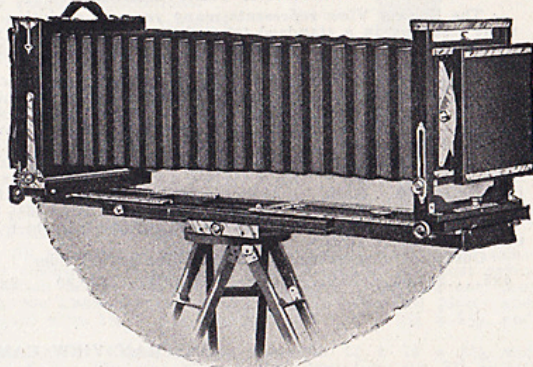
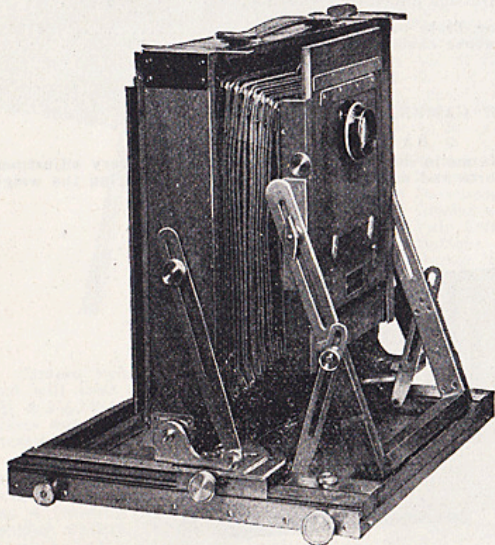
**Long Focus, Tilt and Swing Front. A Long-Life, Every-Purpose Camera**

Bellows capacity, 32 1/2 in.—with tilt and swing front attachment 39 1/2 in. Shortest focal length 4 3/4 in. Both front and rear focus. Can be used with or without tilt-swing front, the same 7 1/2 in. front-board being used in either case.

Built durably of cherry and finished in beautiful Adam brown, semi-gloss. All metal parts of brass, polished and lacquered. Bellows of black leather with gossamer rubber cloth to assure durability and flexibility.

A complete commercial camera with every desirable movement for handling the widest variety of subjects.

Price, complete with case and one double cut film holder or plate holder.....\$85.00



**DEARDORFF COMMERCIAL CAMERAS**

Every photographer knows the necessity of having a camera with a double swing back—a rising front—a swing front and a supplementary rising front for ultra short focus lenses—an extra long, large roomy bellows—a reversible back and a large reversible front board.

**SPECIFICATIONS**

All Wood Parts—are made of select seasoned genuine mahogany, finished in waterproof wood lacquer.

Turnable—for lateral swing, and front standards are made of 1/2 in. hard aluminum, very rigid and practically unbreakable.

Camera Front—which holds the front board and lens is secured by strong steel screws and brass thumb nuts, and can be swung to any angle to bring foreground and distance or front rows and back rows of groups in focus all at the same time with large stops in the lens.

Sliding Tracks—are in metal, provided with locks to prevent vibration. All clamp screws are steel provided with brass nuts so there is practically no wear.

Springs—are phosphor bronze to secure stability of tension.

Front Board—is square, reversible all the way around, and extra large bellows permit the fitting of inside shutters and the use of large lenses.

Genuine Leather Bellows—lined with thin rubber cloth absolutely light tight and will last a lifetime with ordinary use.

Back—is reversible all the way around and is provided with cutout boards for taking two or four pictures on 8 x 10 and 10 x 12 plates. The slides may be drawn from right or left side, top or bottom.

Size	Focal Length	Bellows Extension	Front Board	Camera Closed	Weight in Pounds	
5 x 7	3 1/2 to 22	23 1/4	4 1/2 x 4 1/2	9 x 10 1/4 x 3 3/4	5 1/2	\$77.75
8 x 10	4 to 30	31	6 x 6	12 1/2 x 13 1/4 x 4 1/4	9	113.00
10 x 12	4 1/2 to 33	35	7 x 7	14 1/2 x 15 1/2 x 4 1/2	12 1/2	231.75

Price includes one film or plate holder. (No Case.)

C

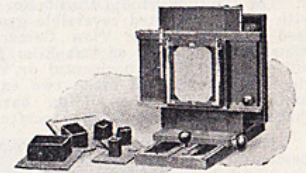
**FOLMER MULTIPLE CAMERA**

For studios where photographs are made for chauffeurs' licenses, post cards and commuters' passes; at resorts, and for general 5x7 work as well, this new outfit fills a real need. The foremost feature of this new Folmer product is the multiple back. This device is semi-automatic in action—maximum production results with but a minimum expenditure of effort on the operator's part.

A set of six kits or masks is provided so that two, four, nine, sixteen or twenty head and shoulder portraits may be made on a 5x7 film or plate, and there is a kit for four full length portraits, as well. This, of course, is in addition to the straight 5x7 negative for portrait or group work. Moreover, any of these exposures, except the four full lengths, may be made vertically or horizontally simply by transposing the plainly marked spacing rods that control the action of the back, and, of course, reversing the holder in the back. This reversible feature, simple and convenient, accords the camera exceptional versatility.

Specifications: The Folmer Multiple camera is substantially made of cherry and mahogany, dark, hand-rubbed finish; metal parts are sandblasted. The lens board measures 6 3/4 x 6 3/4; focal capacity of camera, 19 in. Weight but 15 lb.; dimensions, closed, 18x16 1/2 x 23 in.

Folmer Multiple Camera with set of six kits and one 5x7 film or plate holder (without lens or shutter).....	\$ 81.90
Complete as above and with No. 34 Kodak Anastigmat F.4.5 lens (8 1/2 in.) and Compound Shutter.....	159.08
Extra 5x7 film or plate holders, each.....	2.48
Extra lens boards, each.....	1.25
Camera Back only.....	40.50



**CENTURY STUDIO OUTFIT NO. 4A (8x10)**

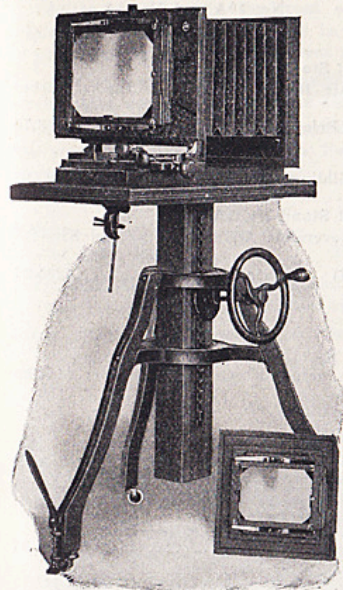
This outfit is designed especially for work in a confined space. Though compact, it is complete in every respect. The Century Studio Camera No. 4 with a bellows draw of 22 inches and 9 x 9 lens board, is provided with liberal swing, both vertical and horizontal. Fitted with a Sliding Ground Glass Carriage permitting ready making of a full 8 x 10 negative or of two 5 x 8 exposures on one plate. Regular equipment also includes one 8 x 10—5 x 7 Reversible Adapter with one 8 x 10 and one 5 x 7 Eastman View Plate or Eastman Portrait Film Holder.

The stand is the Century No. 4A.

Century Studio Outfit No. 4A complete consists of an 8 x 10 Century Studio Camera No. 4A, with Sliding Ground Glass Carriage No. 4A, one 8 x 10—5 x 7 Reversible Adapter with one 8 x 10 and one 5 x 7 Eastman View Plate or Portrait Film Holder, and the Century Study Stand No. 4A.....\$140.40

When furnished separately.

Century Studio Camera No. 4A with Sliding Ground Glass Carriage No. 4A, one 8 x 10 Eastman Plate or Film Holder, one 8 x 10—5 x 7 Reversible Adapter—including one 5 x 7 Eastman Plate or Film Holder.....	99.90
Sliding Ground Glass Carriage, No. 4A with one 8 x 10 Eastman View Plate or Portrait Film Holder.....	31.50
8 x 10—5 x 7 Reversible Adapter, including one 5 x 7 Eastman View Plate or Portrait Film Holder.....	14.40



**ANSCO NO. 5 STUDIO OUTFIT**

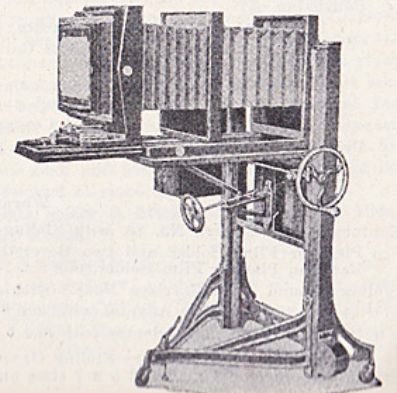
This outfit has proved so adaptable and so satisfactory for all classes of studio work that we have discontinued the build-

ing of other models except on special order. Photographers who have discarded other equipment for it say that it gives a new thrill to a routine operation. This is because of its complete responsiveness to the operator's need of the moment, when convenience of adjustment means so much. To this convenience are added accuracy, rigidity, and quietness of movement, with substantial construction and a richness in cabinet work and finish which is professional to the last detail.

Raising, lowering, tilting, swings, bed extension, rough and fine focusing actions—in fact, all desired features—are present, and for long-focus work the bellows has a draw of 40 inches. For such work the camera may be run forward on the platform if desired, bringing all movements within as easy reach from focusing position as when using smaller lenses that do not require so much bed extension. Equipped with reversing sliding ground glass attachment for 8 x 10 double plate or film holders, 5 x 8 diaphragm, and reversing adapter for 5 x 7 holders, with 3 1/2 x 5 diaphragm. Space for adapter on front of stand, so that it will not get stepped on or mislaid. Holder rack is provided also. The outfit is beautifully finished in Adam brown.

Price complete, with one holder each 8 x 10 and 5 x 7.....\$166.50

Extra holders for either plates or cut films, as desired,	
8 x 10.....	3.00
5 x 7.....	2.75



**EAGLE ANHYDROUS SULPHITE SODA**

Tested

Manufactured Especially for Photographic Purposes. It is of the first importance that sodas used for making developer should be absolutely pure so as to obtain uniform results.

Our Eagle anhydrous sulphite we guarantee to be photographically pure, always uniform and not to lose strength by age. It will be found a very satisfactory article.

1-pound bottle	.....	\$0.32
1-pound can	.....	.18
5-pound bottle	.....	1.10
5-pound can	.....	.75
25-pound can	.....	3.25
100 pounds	.....	9.00

**EAGLE MONOHYDRATED CARBONATE SODA (Dried)**

Tested

Manufactured Especially for Photographic Purposes.

Double the strength of the crystals, therefore use only one-half the quantity in any formula calling for crystals. Should be used in connection with our anhydrous sulphite to produce the best results. It is an article upon which the photographer can depend.

1-pound bottle	.....	\$0.25
1-pound can	.....	.15
5-pound bottle	.....	.85
5-pound can	.....	.60
25-pound can	.....	2.25
100 pounds	.....	6.50

**DEVELOPING AGENTS**

	1 Ounce	1/2 lb.	1/4 lb.	1 lb.	5 lb.
Activol (see below)	.....	.....	.....	.....	.....
Adurof (Haufl)	.....	2.50	4.75	9.00	.....
Amidol (Johnson)	.....	1.60	3.00	5.60	27.50
Amidol (Agfa)	.....	2.10	3.80	6.85	31.05
Amidol (Haufl)	.....	2.03	3.83	7.20	.....
Athenon	.....	1.50	.....	5.60	.....
Cummime No. 11	.....	.....	.....	2.40	.....
Dianol	1.00	3.50	.....	12.00	.....
Eagetol (see below)	.....	.....	.....	.....	.....
Edinol	.....	2.00	3.75	7.00	.....
Elon (Eastman)	.....	1.19	2.23	3.95	18.50
Glycin (Johnson)	.....	1.60	3.00	5.60	27.50
Glycin (Haufl)	.....	2.03	3.83	7.20	.....
Glycin (Agfa)	.....	2.57	4.86	9.18	45.20
Hydrochinone (Eagle)	.....	.44	.73	1.35	6.50
Hydrochinone (Eastman)	.....	.46	.76	1.42	6.80

Developers in Tabloid Form, see Tabloid, page 179

**ACTIVOL**

A universal liquid developer for all purposes. Dish, stand or tank.

3 oz. bottles, each	.....\$0.54	8 oz. bottles, each	.....\$0.99	16 oz. bottles, each	.....\$1.80
---------------------	-------------	---------------------	-------------	----------------------	-------------

**EAGETOL**

An American made Developing Agent. Has speed and remarkable lasting quality. Gives the rich blue-black tone so much desired. An ounce of Eagetol Solution will give a greater number of perfect prints than any other developer we have ever tested.

Per oz.	.....\$0.35	Per 1/4 lb.	.....\$1.10
Per 1/2 lb.	.....2.10	Per lb.	.....3.95

**(Agfa) RODINAL**

3 ounces	.....\$0.54	8 ounces	.....\$0.99	16 ounces	.....\$1.80
----------	-------------	----------	-------------	-----------	-------------

**INDEX**

THE articles in this catalogue are arranged alphabetically, A, B, C, &c., with reference headings under each letter. This is a quick and convenient method of locating any article.

If you are interested in any particular subject, as, for example: Projection Apparatus, or X-Ray Goods, look under "P" or "X," as the case may be, and you will find the various articles referring to your subject listed, even if you do not know their trade name.

Factory costs fluctuate, and prices quoted in this catalogue represent costs at time of issue, therefore PRICES ARE SUBJECT TO CHANGE WITHOUT NOTICE.

We are not responsible for goods after being delivered to the Post Office, Express Company or Railroad. However, we insure under our open policy all parcel post packages against loss or damage in the mail.

When ordering to be sent C. O. D. we require a deposit on the order sufficient to cover transportation both ways.

Prices quoted are F. O. B. Our Store, except when otherwise specified in the catalogue. (If to be sent by mail, add postage.)

We solicit your valued orders, and can assure you that same will have our careful and prompt attention.

Prices quoted are for cash with order. All discounts have been deducted.

General Index on page 211

**GENERAL INDEX**

<b>A</b>	Chemicals	.....208, 209	<b>F</b>	Fabric	.....67
Acetylene Burner	.....1	Claire	.....20	Fans	.....67
Acetylene Generator	.....1	Cleaner	.....43, 77, 97	Faucet Connections	.....204
Activol	.....210	Clips	.....43, 44, 206	Ferrotypes Plates	.....151
Actinometers	.....41	Clocks	.....44, 45	Files	.....68
Adapters Film	.....72	Cloth	.....45, 46, 142	Film Packs	.....72
Adhesive Wafers	.....1	Collodion	.....46	Film Sheaths	.....73
Adurof	.....210	Colors	.....19, 47, 50	Film, Texture	.....125
Air Brushes	.....1, 2	Colorscope	.....50	Films	.....68-71
Air Brush Outfits	.....2	Copylite	.....51	Films, Motion Picture	.....127, 128
Albums	.....3-4	Corners	.....136	Films, X-Ray	.....207
Amidol	.....210	Corrugated Board	.....51	Filters, Ray	.....73-76, 111
Aprons	.....5	Cotton, Absorbent	.....51	Finders	.....76-77
Art Gum	.....4	Couplers	.....175	Finger Tips	.....77
Athenon	.....210	Cover Glass	.....97	Fitting Tool	.....77
		Crayon Sauce	.....49	Fixing Boxes	.....77-78
<b>B</b>		Cummime	.....210	Fixing Solutions	.....78, 79, 179, 206
Baby Holder	.....5	Cutters	.....192, 193	Fixit	.....50
Background Brackets	.....13	Cutters, Frontboard	.....99	Flash Bags	.....79
Backgrounds	.....7, 12			Flash Bulbs	.....82
Background Carrier	.....13	<b>D</b>		Flash Cartridges	.....84
Background Print-in	.....7	Darkroom	.....51	Flash, Cleaner	.....79
Backing	.....13	Demijohns	.....18	Flash Lamps	.....79-81
Backing Cloth	.....45	Desensitizers	.....51	Flash Powder	.....83-84
Backs	.....6	Densol	.....51	Flash Reflectors	.....81, 82
Balopticans	.....161, 162	Desk, Retouching	.....165-166	Flash Sheets	.....83
Bath Holders	.....14	Developers	.....51, 52, 206	Focusing Cloth	.....51, 84
Biascope	.....15	Developing Agents	.....210	Focusing Glass Holder	.....122
Binders	.....14	Developing Cabinets	.....206	Foot Switch	.....97
Binoculars	.....15	Developing Machines	.....52, 131	Foregrounds, Comic	.....12
Bleachers	.....20	Developing and Printing,		Forms, Brass	.....85
Blotters	.....15	3rd Cover		Frames	.....85-86
Blue Print Powders	.....15	Diamonds	.....88	Funnels	.....86-87
Bolting Cloth	.....46	Dianol	.....210	Furniture	.....87-88
Books	.....16-19	Diascopes	.....53		
Bottles	.....18	Dies, Embossing	.....58, 59	<b>G</b>	
Bromide Solution	.....18	Diffusion Disks	.....53, 111	Gelatin	.....88
Bromoil Supplies	.....19-21	Dippers	.....53	Glass	.....88
Brushes	.....21	Display Racks	.....53	Glass Cutters	.....88
Bulb and Tubing	.....174, 175	Distance Indicator	.....53	Gloves	.....89
		Dodgit	.....50	Glue	.....89
<b>C</b>		Driers	.....54-55	Glycin	.....210
Calculator	.....67	Dry Mounting	.....55-56	Graduates	.....89-90
Cameras	.....22-38	Duplicators	.....56	Ground Glass Substitute	.....90
Cameras, Movie	.....128, 133	Dybro	.....56		
Cameras, Color	.....26	Dyes	.....56, 57	<b>H</b>	
Camera Dressing	.....99			Hangers, Pushless	.....163
Camera Stands	.....38, 39			Hangers, Tank	.....186, 187, 206
Candles	.....39	<b>E</b>		Hardeners	.....90
Cans, Storage	.....143	Eagetol	.....210	Head Rest	.....91
Canvas, Art	.....140	Easels	.....57-63	Head Screens	.....90-91
Caps, Flash	.....79, 80	Edinol	.....210	Heater	.....91
Caps, Lens	.....99	Electric Bulbs	.....94, 95	Hinges, Cloth	.....45
Carbons	.....40	Elon	.....210	Holders	.....91-92
Carbon Supplies	.....40, 42	Embossers	.....57-59	Holder, Paper	.....61
Carboys	.....18	Enclosures Print	.....59	Hopper	.....20
Cardboard	.....134	Enlargers	.....60-63	Hydrochinone	.....210
Carrying Cases	.....42	Envelopes	.....63, 64	Hydrometers	.....92
Celluloid	.....43	Envelopes, X-ray	.....206	Hypo	.....79
Cement, Film	.....78	Eradicator, Color	.....50	Hypo-Killer	.....92
Chairs	.....87	Etching Tank	.....186		
Changing Bags	.....43	Etching Tools	.....64, 65	<b>I</b>	
Charcoal	.....43	Evaporating Dishes	.....65	Illuminators	.....92
Chart, Color	.....41	Exposure Meters	.....65-67	Inks	.....92
		Exposure Rule	.....206		
		Eye Rest	.....67		

Intensifier .....93  
 Intensifying Screens .....207  
 Iron, Dry Mounting.....56  
 Ivory .....93

**J**

Jacks .....39  
 Jars .....93  
 Jellitac .....144  
 Jugs .....90

**K**

Kilns, China .....41  
 Kits .....94  
 Knife .....20-93  
 Kodalak .....204  
 Kodaloid .....94  
 Kodapod .....197  
 Kodolon .....210  
 Kodoscope Sundries .....130

**L**

Lamps, Darkroom .....95, 97  
 Lamps, Electric .....94, 95  
 Lamps, Lighting .....113, 121  
 Lantern Slide Goods.....97, 99  
 Lavaproy .....177  
 Leads, Retouching .....145  
 Leather, Dressing .....99  
 Lens Adapter .....100  
 Lens Boards .....99  
 Lens Caps .....99  
 Lens Cleaner .....99  
 Lens Hoods .....100  
 Lenses .....101, 111  
 Lenses, Condensing .....111  
 Lenses, Pinhole .....111  
 Lenses, Supplementary.111, 112  
 Levels .....113  
 Lights .....113-121  
 Litho .....41  
 Loading Fixture .....186

**M**

Magnesium Powder .....83  
 Magnesium Ribbon .....83  
 Magnifiers .....122, 123  
 Masks .....124, 126  
 Metol .....210  
 Microscopes .....123  
 Mirrors .....127  
 Mortar and Pestles.....127  
 Mounts .....134-136  
 Movie Cameras .....128, 133  
 Multiplex .....56

**N**

Negative Marker .....137  
 Negative Pockets .....137  
 Negative Preservers .....137  
 Negative Racks .....137, 138  
 Nostane .....138  
 Numbering Machine .....137

**O**

Oil Supplies .....19-22  
 Opaque .....138  
 Optipod .....196  
 Ortol .....210  
 Outfits, Air Brush .....2  
 Outfits, Bromoil .....41  
 Outfits, Carbon .....41  
 Outfits, Carbro .....42  
 Outfits, Oil .....21

Outfits, Printing .....139  
 Outfits, Synchronizing .....82

**P**

Paddle Print .....158  
 Pakodoper .....52  
 Pallettes .....20, 50  
 Paper, Oil .....19  
 Papers .....19, 139-143, 207  
 Paper Transfer .....20, 40-42  
 Paramidophenol .....210  
 Passe-Partout Goods .....144  
 Paste .....144  
 Pencils .....144, 146  
 Pendulum, Chain .....146  
 Photo-Flat .....160  
 Photomailers .....146  
 Photoscript .....188  
 Pigments .....19  
 Pitchers .....146  
 Plates, Dry .....147-150  
 Plates, Ferrotyping .....151  
 Plates, X-Ray .....207  
 Pockscopes .....15  
 Polishing Solution .....177  
 Portrait Attachments.111-112  
 Press, Print .....151  
 Press, Transfer .....20  
 Printers .....151-155  
 Printing Frames .....155, 157  
 Print Lustre .....204  
 Print Paddles .....158  
 Print Roller .....158  
 Print Straightener .....159  
 Print Tongs .....160  
 Prisms .....106-110  
 Probus .....160  
 Projectors .....129-133, 160-162  
 Proofing Machine .....155  
 Pump, Air .....2  
 Punch .....162  
 Push Pins .....163  
 Pyro .....210

**Q**

Quickdry .....55

**R**

Racks, Developing .....187  
 Radio Mats .....98  
 Radiotronics .....160  
 Ray Filters .....73-76  
 Re-developers .....52  
 Reducers .....163, 164  
 Reducing Glass .....164  
 Reflectors, 81, 82, 113-121, 164-165  
 Respirator .....165  
 Retouching Desks .....166  
 Retouching Frames .....165, 166  
 Retouching, Ho'der .....165  
 Retouching Machine .....165  
 Retouching Outfits .....166  
 Retouching Solution .....166  
 Rocker System .....203  
 Rodinal .....210  
 Rubber, Plastic .....20  
 Rubber Solution .....167  
 Rubiline .....167

**S**

Safelights .....96  
 Scales .....167-169  
 Screens, Projection .....169, 170

Self-Timer .....170  
 Sensitizing Solution .....170  
 Sepia Solution .....170, 171  
 Sharpener, Retouching .....171  
 Sheaths .....73  
 Shutter, Coupler .....175  
 Shutter Extension .....175  
 Shutter Release .....175, 176  
 Shutters .....171-174  
 Silver Precipitant .....176  
 Sinks .....185  
 Siphon .....190  
 Sizing Solution .....50  
 Sleeve Protectors .....176  
 Smocks .....176  
 Spirit Sensitizer .....41  
 Splicers .....130  
 Squeegee Boards .....41  
 Squeegee Plates .....177  
 Squeegee Solutions .....177  
 Squeegees .....176  
 Stain Remover .....177  
 Stereoscopes .....177  
 Stirring Rods .....177  
 Stopple .....176  
 Studio Registers .....177, 178  
 Stumps .....20  
 Switches .....82

**T**

Tablet Crusher .....177  
 Tabloid Preparations.....179  
 Tanks .....133, 180-186, 207, 208  
 Tanks, Movie .....133  
 Tape .....46, 179-180  
 Test Chart .....74  
 Thermometers .....187, 188  
 Thumb Tacks .....163  
 Timers .....44, 45  
 Timers, Self .....170  
 Title Tabs .....4  
 Tinting Outfits .....188  
 Tinting Strips .....98  
 Tongs, Print .....160  
 Toning Solution .....189  
 Topping Powder .....189  
 Traceolene .....189  
 Tracing Cloth .....46  
 Tray Coatings .....191  
 Trays .....189-191  
 Treepods .....196  
 Trimmers .....191, 192  
 Tripod Accessories .....196-197  
 Tripods .....132, 193, 196

**V**

Varnish .....197-198  
 Ventilators .....198  
 Viewer .....198  
 Vignettes .....198-199  
 Vise, Lantern Slide.....99

**W**

Washing Boxes .....200-204  
 Waxing Solution .....41, 204  
 Wedges .....41  
 Weighmeter .....169  
 Weights .....169  
 Wringers .....205

**X**

X-Ray Goods .....206-208

**DEVELOPING - PRINTING - ENLARGING  
 COPIES - LANTERN SLIDES**

Our facilities are better than ever for properly handling your finishing and all orders are given prompt and careful attention.

*It Will Pay You to Give Us a Trial*

**30 Hour Service on Roll Film and  
 Film Pack Developing**

**Enlargements One Week  
 Developing**

Roll Film  
 All sizes, Rolls—6 or 8 exp..... \$0.10  
 All sizes, Rolls—10 and 12 exp..... .15

Plates and Cut Film  
 4 x 5 or smaller Plate or Film..... \$0.05  
 5 x 7 or smaller Plate or Film..... .10  
 8 x 10 or smaller Plate or Film..... .20

**Film Packs**

Up to 2 1/4 x 3 1/4 ..... .25  
 3 1/4 x 4 1/4 to 4 x 6..... .35  
 6 x 7 ..... .50

X-Ray Plate or Film  
 8 x 10 or smaller ..... .50  
 11 x 14 ..... .75

**FINE GRAIN DEVELOPING AND PRINTING FOR LEICA,  
 DOLLY AND OTHER MINIATURE FILM**

Developing, per roll, Reg. Film..... \$0.15  
 Panchromatic Film..... .25  
 2 1/4 x 3 1/4 Prints B. & W..... .15  
 3 1/4 x 4 1/4 Prints B. & W..... \$0.15  
 3 1/4 x 5 1/2 Prints B. & W..... .20  
 Sepias ..... \$0.10 per Print extra

**PRINTING—Glossy or Semi-Matte**

	S. W.	D. W.	Sepia	M't'g Extra
V. P. K. or smaller.....	\$0.04	\$0.06	\$0.06	\$0.08
Brownie No. 1 and 2 (No. 117 and 120) ..	.05	.07	.08	.08
1-A (No. 116) ..	.06	.08	.09	.05
3 1/4 x 4 1/4 (No. 118 and 124) ..	.07	.08	.10	.05
3 1/2 x 3 1/2 (No. 101) ..	.07	.10	.10	.05
2-C (No. 130) ..	.07	.10	.10	.06
3-A (No. 122) (and 9 x 12 cm.) ..	.08	.12	.10	.06
4 x 5 (Nos. 103, 104, 123) ..	.09	.12	.10	.06
4 1/4 x 6 1/2 (No. 126) ..	.15	.20	.25	.07
5 x 7 ..	.15	.20	.25	.10
5 x 8 ..	.20	.25	.30	.10
6 1/2 x 8 1/2 ..	.25	.30	.40	.15
8 x 10 ..	.25	.30	.50	.15
11 x 14 ..	.35	.40	.65	.25
Post Cards ..	..	.08	..	..
Post Cards per 100 ..	..	6.00	..	..

**ENLARGING**

Size	Plain B. & W. Unmounted	Plain B. & W. Mounted	Plain Sepia Mounted	Art Proof B. & W. or Buff	Art Proof Sepia
8 1/4 x 5 1/2 (or P. C.)	\$.25	\$.35	\$.40	\$.75	\$1.00
6 x 7	.35	.45	.50	.75	1.00
6 x 8	.50	.65	.75	1.00	1.25
6 x 10 or 8 x 10	.60	.75	.85	1.00	1.50
11 x 14	1.00	1.25	1.50	1.75	3.00
14 x 17	1.75	2.00	2.50	2.75	3.50
16 x 20	2.50	3.00	3.00	3.50	..

**Grade "A" Copying**

No Air Brush or Retouching  
 6 x 7 or smaller, Best Work..... \$1.50  
 8 x 10 Best Work..... 3.00  
 11 x 14 Best Work..... 4.50  
 (One print included with copy)

**Lantern Slides**

Slides B. and W. from neg..... \$0.50  
 Sepia Slides ..... .65  
 Slides and copy neg. from prints..... 1.00

**Coloring Lantern Slides**

A—Grade best detail work ex..... 1.00  
 B—Grade good qual. aver. type..... .65

**PROMPT ATTENTION TO MAIL ORDERS**

Send for Separate List of Color Work, Miniatures, etc.

We make a specialty of mounting in Albums. We are always ready to offer suggestions—and to quote lowest prices on any kind of special work.

*Good Work, Prompt Service, Our Motto*

LP 1145