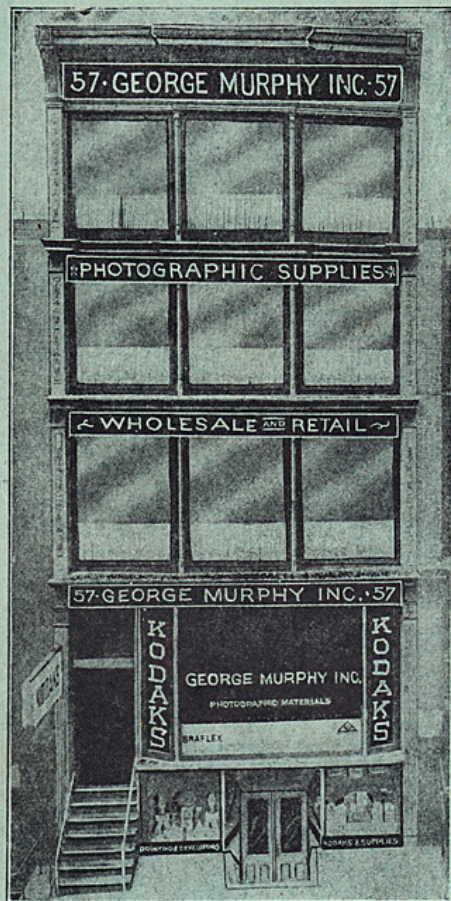


EVERYTHING PHOTOGRAPHIC

Established 1878



SIXTY YEARS OF SERVICE
TO BOTH THE
AMATEUR AND PROFESSIONAL PHOTOGRAPHER

GEORGE MURPHY, Inc.
57 EAST 9th STREET NEW YORK

Mail Order Catalogue

PHOTOGRAPHIC MATERIALS

No. 138A

—
EVERYTHING PHOTOGRAPHIC
—

*Exclusive Handlers of
Photographic Materials*
ESTABLISHED 1878

GEORGE MURPHY, Inc.
57 EAST 9th STREET NEW YORK

Our Guarantee

We guarantee all our goods to be exactly as represented in this catalogue. We also send them with the understanding that if they are not perfectly satisfactory to the purchaser and are returned to us immediately unused (except books, masks and air brushes), we will refund the money paid for same less the transportation charges.

Our aim is pleased customers who will recommend us to others.

PARCEL POST RATES

For the convenience of our customers we are listing below parcel post rates. Space will not permit us to show the rates for more than 40 lbs.

1 To 40 Pounds								
Lbs.	Local	Zones 1-2	Zone 3	Zone 4	Zone 5	Zone 6	Zone 7	Zone 8
	Zone	up to 150 mi.	150 to 300 mi.	300 to 600 mi.	600 to 1000 mi.	1000 to 1400 mi.	1400 to 1800 mi.	over 1800 mi.
1	\$0.07	\$0.08	\$0.09	\$0.10	\$0.11	\$0.12	\$0.14	\$0.15
2	.08	.10	.11	.14	.17	.19	.23	.26
3	.08	.11	.13	.17	.22	.26	.32	.37
4	.09	.12	.15	.21	.27	.33	.41	.48
5	.09	.13	.17	.24	.33	.40	.50	.59
6	.10	.14	.19	.28	.38	.47	.59	.70
7	.10	.15	.21	.31	.43	.54	.68	.81
8	.11	.16	.23	.35	.49	.61	.77	.92
9	.11	.17	.25	.38	.54	.68	.86	1.03
10	.12	.18	.27	.42	.59	.75	.95	1.14
11	.12	.19	.29	.45	.64	.82	1.04	1.25
12	.13	.21	.31	.49	.70	.89	1.13	1.36
13	.13	.22	.33	.52	.75	.96	1.22	1.47
14	.14	.23	.35	.56	.80	1.03	1.31	1.58
15	.14	.24	.37	.59	.86	1.10	1.40	1.69
16	.15	.25	.39	.63	.91	1.17	1.49	1.80
17	.15	.26	.41	.66	.96	1.24	1.58	1.91
18	.16	.27	.43	.70	1.02	1.31	1.67	2.02
19	.16	.28	.45	.73	1.07	1.38	1.76	2.13
20	.17	.29	.47	.77	1.12	1.45	1.85	2.24
21	.17	.30	.49	.80	1.17	1.52	1.94	2.35
22	.18	.32	.51	.84	1.23	1.59	2.03	2.46
23	.18	.33	.53	.87	1.28	1.66	2.12	2.57
24	.19	.34	.55	.91	1.33	1.73	2.21	2.68
25	.19	.35	.57	.94	1.39	1.80	2.30	2.79
26	.20	.36	.59	.98	1.44	1.87	2.39	2.90
27	.20	.37	.61	1.01	1.49	1.94	2.48	3.01
28	.21	.38	.63	1.05	1.55	2.01	2.57	3.12
29	.21	.39	.65	1.08	1.60	2.08	2.66	3.23
30	.22	.40	.67	1.12	1.65	2.15	2.75	3.34
31	.22	.41	.69	1.15	1.70	2.22	2.84	3.45
32	.23	.43	.71	1.19	1.76	2.29	2.93	3.56
33	.23	.44	.73	1.22	1.81	2.36	3.02	3.67
34	.24	.45	.75	1.26	1.86	2.43	3.11	3.78
35	.24	.46	.77	1.29	1.92	2.50	3.20	3.89
36	.25	.47	.79	1.33	1.97	2.57	3.29	4.00
37	.25	.48	.81	1.36	2.02	2.64	3.38	4.11
38	.26	.49	.83	1.40	2.08	2.71	3.47	4.22
39	.26	.50	.85	1.43	2.13	2.78	3.56	4.33
40	.27	.51	.87	1.47	2.18	2.85	3.65	4.44

INSURANCE FEES

Fees: 5c for value not exceeding \$5.00
10c for value not exceeding 25.00
15c for value not exceeding 50.00

We suggest express shipments on packages weighing more than 40 pounds.

FEBRUARY 15th, 1938

AFGA ROLL-FILM — PLENACHROME

Size	Price
1 5/8 x 2 1/2	\$.25
1 5/8 x 2 1/2	.35
2 1/4 x 2 1/4	.25
2 1/4 x 3 1/4	.30
2 1/4 x 3 1/4	.35
2 1/4 x 3 1/4	.30
2 1/2 x 3 1/4	.35
2 1/2 x 4 1/4	.35
2 1/2 x 4 1/4	.35
2 1/2 x 4 1/4	.40
2 7/8 x 4 7/8	.45
3 1/4 x 4 1/4	.45
3 1/4 x 4 1/4	.45
3 1/4 x 5 1/2	.55

March 7, 1938

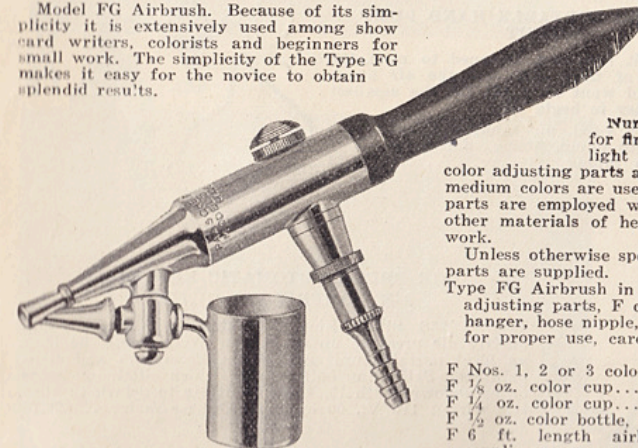
We solicit your valued orders, and can assure you that same will have our careful and prompt attention.

Absorbent Cotton, see Cotton, Page 81
Acid Hypo, see Acid Fixing Bath, Page 59
Actinometers, see Page 53
Activol Developer, see Page 82

Adapter, Film Pack, see Page 115
Adapter, Lens, see Page 142
Adhesive Wafers, see Page 7

PAASCHE MODEL FG AIR BRUSH

Model FG Airbrush. Because of its simplicity it is extensively used among show card writers, colorists and beginners for small work. The simplicity of the Type FG makes it easy for the novice to obtain splendid results.



Type FG color adjusting parts are furnished in several sizes to enable the user to apply from the lightest to the heaviest colors with a simple control varying from a fine line to a spray or stipple effect.

Number one color adjusting part is used for fine work where water colors, dyes, and light liquids are used. Number F2 or H3 color adjusting parts are used for all-around purposes where medium colors are used. Number F3 or H5 color adjusting parts are employed with oil colors, lacquers, bronzes, and other materials of heavy consistency for light, decorative work.

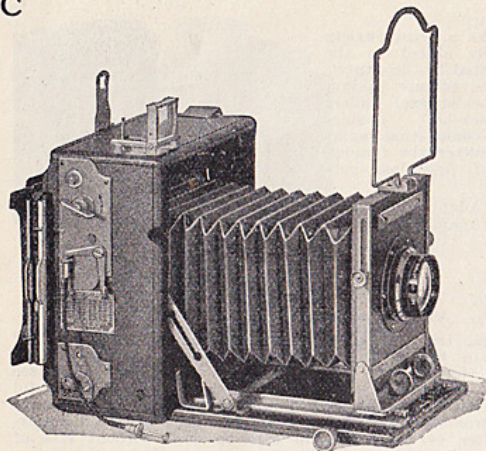
Unless otherwise specified, the F2 and H3 color adjusting parts are supplied. Type FG Airbrush in leatherette case with FG color adjusting parts, F color cup, F 1/2 oz. color bottle, hanger, hose nipple, one grease stick and directions for proper use, care and handling, complete.....\$11.00

Parts

F Nos. 1, 2 or 3 color adjusting parts, each.....	\$2.00
F 1/8 oz. color cup.....	.75
F 1/4 oz. color cup.....	1.00
F 1/2 oz. color bottle, complete.....	.50
F 6 ft. length airhose with screwtight swivel couplings.....	1.40
HF21 1/4" line valve.....	.75

Books on Air Brush Work, see Books, Page 21
Colors for Air Brush Work, see Colors, Page 81
Easels for Air Brush Work, see Easels, Page 92

C



SPEED GRAPHICS CAMERAS

These cameras contain all of the regular Graflex features, with the exception of the Focusing Hood. Focus is accomplished in two ways: by a distance scale attached to the extension bed or through the rear ground glass.

THE 4 x 5 SPEED GRAPHIC

When supplied with Graphic Back, a spring-actuated ground glass focusing screen is built on as part of the camera. Graphic cut film or plate holders and the Kodak film pack adapter are used with it.

When supplied with Graflex Back, standard 4x5 Graflex film and plate attachments interchange with the Graflex Focusing Panel available as an accessory.

4 x 5 SIZE

Dimensions, 6 1/2 x 3 3/8 x 7 1/4. Weight, 3 1/2 lbs. Focal capacity, 13 1/2 in. Size of lens board, 4 x 4 in.

- Speed Graphic, without lens, including one cut film holder (plate holder 4x5 optional) \$72.00
- With Kodak Anastigmat f.4.5, 6 3/8 in. Lens 105.30
- With B. & L. Anastigmat f.4.5, 6 3/8 in. Lens in Compur Shutter 135.00

THE 3 1/4 x 4 1/4 SPEED GRAPHIC

When supplied with Graphic Back, a spring-actuated ground glass focusing screen is built on as part of the camera. Regular Graflex film and plate holders and the Graflex film pack adapter are used with it.

When supplied with Graflex Back, the accessory 3 1/4 x 4 1/4 Graflex Focusing Panel is interchangeable with all 3 1/4 x 4 1/4 Graflex film or plate attachments including the magazines and lantern slide plate holders.

- | | | |
|---|--------------|--------------|
| | Without | With |
| | Range Finder | Range Finder |
| 3 1/4 x 4 1/4 Speed Graphic—Without lens, including one Graflex cut film holder plate (holder optional) | \$67.50 | \$77.40 |

- ACCESSORIES**
- Extra lensboard \$0.75
 - Auxiliary Wide-angle Bed 4.50
 - Focusing Panel for Graflex Back (cost additional) 5.50
 - Sole leather Carrying Case, which accepts camera, six holders, and range finder. 11.00

2 1/4 x 3 1/4 SPEED GRAPHICS

- Camera only without lens including one holder \$72.00
- With 4 3/4" F:4.5 Zeiss Tessar in Self-timing Compur. 105.30
- With 4 3/4" F:4.5 Zeiss Tessar in Self-timing Rapid Compur. 114.30

Send for Graphic Catalog with complete details.

THE GRAFLEX CAMERAS

Space will not permit a full description of each of these models, but a complete catalog of same will be sent on request. These are the cameras that show you the image full size right side up all the time up to the moment of exposure.

SERIES B—STATIONARY BACK—5x7

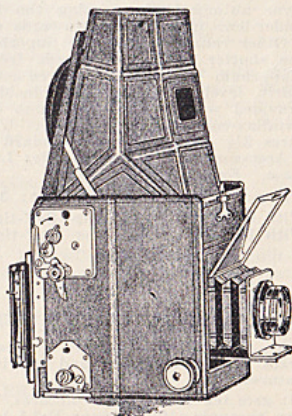
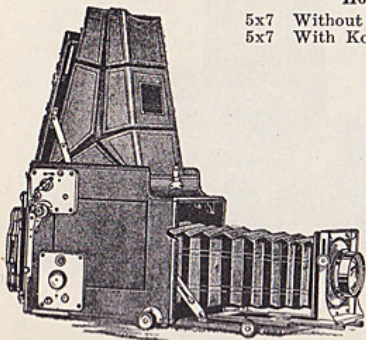
- 5x7 With Kodak F 4.5 Anastigmat No. 34.....\$160.65

SERIES B REV. BACK GRAFLEX CAMERA

- 2 1/4 x 3 1/4 With Kodak F.4.5 Anastigmat No. 31..... \$81.90
- 3 1/4 x 4 1/4 With Kodak F.4.5 Anastigmat No. 32..... 96.30
- 4 x 5 With Kodak F.4.5 Anastigmat No. 33..... 115.20

Home Portrait Graflex

- 5x7 Without lens\$216.00
- 5x7 With Kodak F.4.5 lens No. 36.. 351.00



REVOLVING BACK AUTO GRAFLEX CAMERA

	3 1/4 x 4 1/4 In.		4x5 In.	
	Focal Length	Price	Focal Length	Price
Without Lens, including Film Pack Adapter and Focusing Panel		\$103.95		\$119.25
With F.4.5 Kodak Anastigmat Lens	7 1/2	148.95	10	218.25

REVOLVING BACK GRAFLEX—SERIES D (3 1/4 x 4 1/4—4x5)

A truly "all purpose" Graflex, designed for the varied requirements of general photography. This model incorporates all of the distinctive Graflex features, plus special appointments (automatic lens shield, removable wooden lensboard, supplementary focusing scale) that will appeal to the professional or advanced worker as well as the novice.

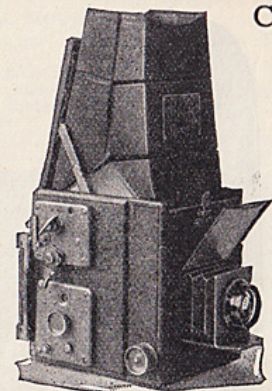
Regular equipment includes one Graflex film pack adapter; however, either cut film, roll film, plates as well as film packs can be used with the proper Graflex attachments.

The reflecting mirror, focal plane shutter and "fast" anastigmat lens all combined to insure "Better Pictures."

Specifications	3 1/4 x 4 1/4	4x5
Dimensions (closed)	6 3/4 x 5 1/2 x 6 7/8	8 3/8 x 6 3/8 x 7 7/8
Bellows capacity	8 1/2	12
Weight	4 lb. 8 oz.	6 lb. 12 oz.
Lensboard	3 1/4 x 3 3/4	3 3/4 x 3 3/4
Minimum focus	5 3/4	7

Construction: Solid mahogany throughout, genuine Morocco seal leather covered, metal parts solid brass, "gun metal" finish.

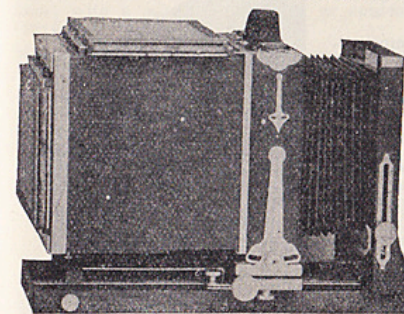
- Revolving Back, Series D Graflex without lens, including Film Pack Adapter \$86.40
- With Kodak Anastigmat lens F.4.5.... (32) 119.70
- 4x5 \$96.30
- (33) 141.30



CURTIS COLOR EQUIPMENT

A complete line of Color Cameras for the Professional and advanced amateur photographer. Made in a modern factory of the highest grade material.

ONE SHOT COLOR CAMERA, Type C, 5 x 7 Size



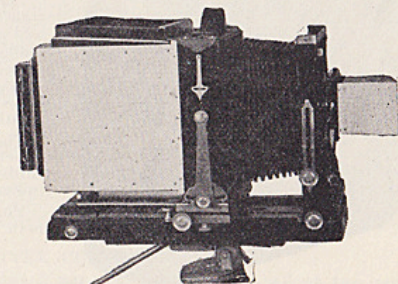
This is a moderately priced instrument which can be bought complete or the color back attachment may be purchased separately to be attached to your own camera. This camera is one of the single reflector type exposing two films in one holder and one in another. The three negatives obtained by one exposure are fully corrected. As illustrated, the camera permits the use of the rising and falling front and the swing back for correction of distorted lines. All mirrors can be cleaned without danger by wiping with a chamois. The Type C Camera, 5x7 size, can be had either with the Red Key (Sharp Red) or Blue Key (Sharp Blue) printer at the same price. We will be glad to explain to you the relative advantages of each style, on request. Be sure and specify which type is desired.

- Type C Color Camera complete with ground glass and two film holders but without lens..... \$375.00
- Type C Color Camera fitted with color tested 12 inch Bausch & Lomb 11B Tessar Lens in Heavy Duty Betax Shutter..... 655.00
- Type C Camera same as described above, but with 14" 11B Tessar Lens..... 605.00
- Type C 5x7 Color Back only fitted to your own view camera, including two registering holders... 310.00
- Fitted fiber carrying case to hold camera and 12 extra holders..... 20.00

TYPE H CAMERA 5x7 SIZE

This camera is built along the same lines as the Type C, except that the color attachment is of all metal construction and, extremely accurate workmanship. This particular camera is intended for high-grade professional work. It comes equipped with the Blue Printer sharp and is supplied with carrying case and B & L F.6.3 Tessar Lens 12" focus in heavy duty Betax or compound shutters for\$1,078.00

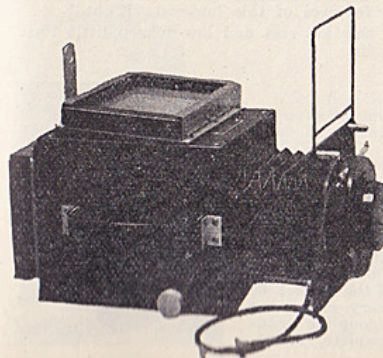
- Extra holders, each..... 5.00

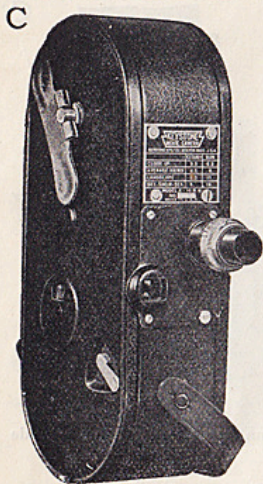


TYPE G CAMERA 3 1/4 x 4 1/4 SIZE

This is an all Metal Tourist Type Camera intended for serious work. This Camera comes equipped with the Blue Printer sharp, but can also be constructed on request with the Red Printer sharp. It makes use of the Tripac Film combination, two in one holder and one in another and is sold only complete as listed below.

- Type G Camera complete with F.4.5 7 7/8" Bausch & Lomb Lens in heavy duty Betax or compound shutter, two registering holders and carrying case.....\$850.00
- Extra holders, each..... 5.00





KEYSTONE MODEL A MOVIE CAMERA, SPRING MOTOR
Convenient Size—2 3/4 in. thick x 9 in. long x 4 in. wide, with 1 1/2 in. lens extension. **Light Weight**—Weighs only 3 3/4 pounds. **F.3.5 Lens**—Universal focus with adjustable mechanical iris. **Monocular View-Finder**—Built right into camera. Enables you to sight quickly and accurately the desired action or scene exactly as you want it to appear on the screen. **Tripod Connection** provided for, but tripod is not necessary to obtain steady pictures. **Spring Motor**—Designed to withstand severe use. **Easy Winding**—Winds very easily. Similar to winding a clock. About 20 feet of film can be taken with each winding. **Capacity**—100-foot, or 50-foot. **Day-light Loading**—Camera may be safely loaded in broad daylight. **Film Precision Movement**—Finger type movement feeds film steadily and accurately. **Audible Film Footage Signal**—At every two feet of film a sound like a faint bell is heard so that without removing camera from eye you will know the amount of film you are taking for a particular subject. **Precision Movement**—Finger type movement feeds film steadily and accurately.

Price complete as described.....\$38.50
 Camera same as above but with F 1.5 Lens..... 75.00

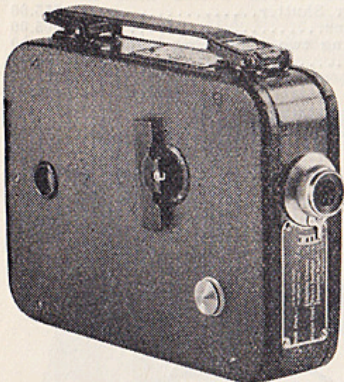
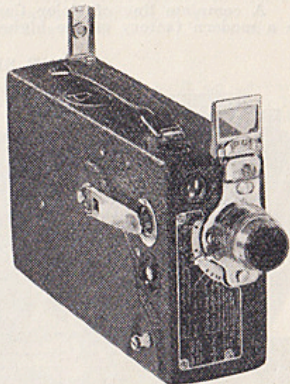
CINÉ-KODAK "K" 16 MM. MOVIE CAMERA

Eastman's most popular 16 mm. home movie camera. Competent, yet not complicated. Makes fine-quality movies outdoors under almost all weather conditions—or indoors with the aid of the proper lighting equipment.

This camera may be instantly fitted for telephoto and wide-angle work as well. Takes Kodachrome movies without accessories of any kind.

Outstanding features of Ciné-Kodak "K" are its built-in exposure guide, simplified focusing, half-speed device, eye-level and waist-height finders, and interchangeable lens mount. Carrying case holds the camera, an extra lens, and two rolls of film.

Ciné-Kodak "K" with its true Kodak Anastigmat f.1.9 lens meets all requirements of beginner and the experienced home movie maker alike. Price \$79.65—with case, \$90.00.



CINÉ-KODAK EIGHT MM. NO. 20 MOVIE CAMERA

Compact in size, light in weight, watch-like in its precise construction. Ciné-Kodak Eight, Model 20, brings new convenience and economy to movie making—yet upholds the traditional Eastman standard of quality.

For less than 10c a "shot" (twenty to thirty average-length movie scenes on a roll of film) this full-fledged movie camera takes crisp movies throughout a wide range of outdoor light conditions—indoors, under artificial light, as well.

The Model 20 is fitted with a Kodak Anastigmat f.3.5 lens which requires no focusing and assures clear, sharp movies. Built-in exposure guide, eye-level finder and automatic footage indicator are among the features of this low-cost "Eight."

You'll be pleased with this low-cost and low-upkeep little Eastman camera. Price \$31.05.

CINÉ-KODAK EIGHT MM. NO. 60 MOVIE CAMERA

Finest of the "Eights," the Model 60's ultra-fast f.1.9 lens renders critically sharp pictures of objects from two feet to infinity. This lens is interchangeable with an f.4.5 1 1/2-inch telephoto lens (supplied at \$33.75 extra) which makes close-ups of distant subjects.

Finished in two-toned gray cowhide, with chromium fittings, the Model 60 and carrying case are strikingly smart in appearance. On every count the Model 60 is a splendid, highly refined photographic instrument, coupling economy of operation with peak performance. Camera and case—complete, \$74.25.

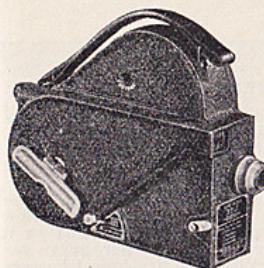


CINÉ-KODAK MODEL E 16 MM. MOVIE CAMERA

A low price, light weight Ciné Camera for all-around use. 100 ft. capacity.

The Model E is fitted with a fixed focus f.3.5 Kodak Anastigmat, has a three-speed shutter, enclosed eye level view finder incorporating a supplementary footage indicator at the side of the finder image. Shutter lever can be locked, allowing operator to get in picture.

Camera\$43.65
 Carrying Case for above Camera..... 6.75

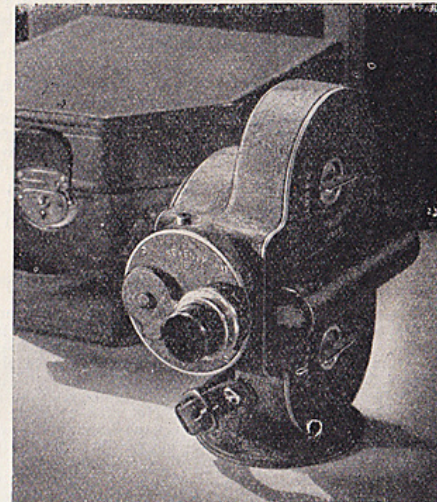


FILMO 16MM NO. 70-E CINE MOVIE CAMERA

The Filmo 70-E 16mm Camera is scientifically designed and will do superbly the things most amateurs commonly ask of a camera.

The Filmo 70-E operating speeds are half (8), normal (16), sound (24) and super (64) speed. It is supplied with a Cooke 1 inch F 1.5 or F 3.5 lens, as selected. The F 1.5 lens permits taking pictures indoors with a minimum of light, or outdoors at super speed even in poor light.

Model No. 70-E with 1" F 1.5 Lens and Carrying Case\$203.50
 Model No. 70-E with F 2.7 Lens and Carrying Case 170.00



Model 70-E

B. & H. FILMO 16MM NO. 121 CINE MOVIE CAMERA

The Filmo 121 Camera is so small, so light and so attractive that you'll want to carry it wherever you go. It is the ideal 16mm camera for those who wish to have their movie making reduced to the simplest operations.

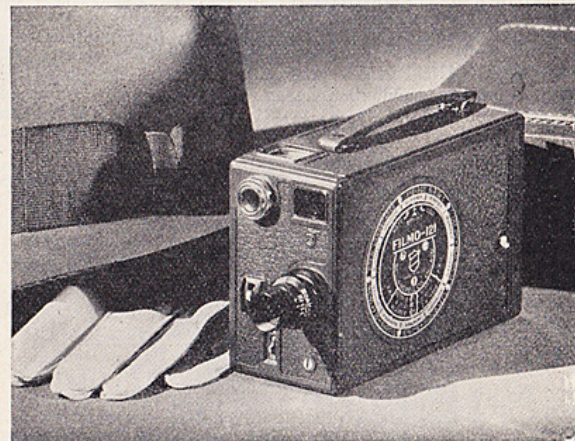
Magazine Loading. Slip in a 50-foot 16mm film magazine, shut the door and Filmo 121 is loaded.

Two Film Speeds. 16 (normal) and 24 (semi-slow motion) frames per second.

Filmo 121 with F 1.5 Cooke Lenses in focusing mount.....\$126.00

Filmo 121—with F 2.5 Cooke Lenses in focusing mount..... 103.50

Carrying Case 7.50

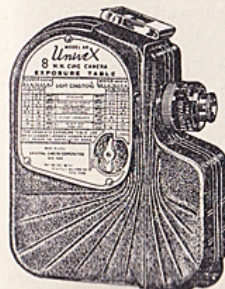


UNIVEX CINE "8"

The first and only precision-built 8 mm. movie camera to sell at this seasonally low price! Takes clear, sharply defined, true-to-life movies—that can be screened up to 6 feet x 4 1/2 feet—FOR LESS THAN THE COST OF ORDINARY SNAPSHOTS! Uses 60c Univex Film Roll—equivalent to 60 ft. of expensive 16 mm. film!

CHECK THESE 12 SUPERIOR FEATURES

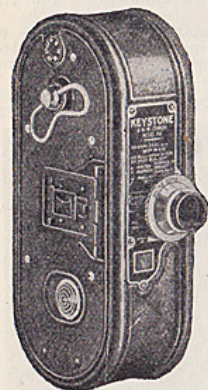
1. Lowest-priced 8 mm. movie camera.
2. Lowest cost of operation.
3. Lightest-weight.
4. Die-cast metal body.
5. Compact. Fits the hand.
6. Fool-proof. Simple to operate.
7. Easy to load. Easy to unload.
8. Quiet operation.
9. Smartly styled.
10. Long scenes per winding.
11. Interchangeability of lenses.
12. Pictures screen up to 4 1/2 ft. x 6 ft.



With F 5.6 Lens.....\$9.95
 With F 3.5 Lens.....17.45
 Carrying Case 2.00

No. 100—30 ft. roll, standard film..... .60
 No. 100 U.P. 30 ft. roll Ultra Pan. Film... .90
 Addition charge for processing above films, ea. .30

C



KEYSTONE K—"8" CAMERA

A low priced 8 mm camera, very economical to operate, containing many features of higher priced machines. Pocket Size—fits in overcoat pocket. Finish—Bronzed grain—smart, durable. Size—6 5/16" high, 2 3/4" deep, 1 3/4" wide. Weight only 1 lb. 12 oz. Universal Lens for taking close or distant shots—F3.5 with iris diaphragm. Interchangeability of Lens Equipment—High speed F1.9 and 1 1/2 inch F3.5 Telephoto Lenses can also be used with the Keystone 8. The change can be made in a jiffy. Three speeds—Normal, slow and s-l-o-w motion. Direct Vision View Finder shows the picture just as it will appear on the film. Auxiliary View Finder—A special view finder for centering difficult or distance shots is also provided. Visual Mechanical Footage Indicator shows number of feet of film used. Exposure Chart shows exactly how to adjust lens for bright, cloudy or rainy days. Tripod Socket enables you to use tripod when you wish. Silent Winding Key folds flat against camera when not in use. Camera Strap Handle—For convenient carrying.

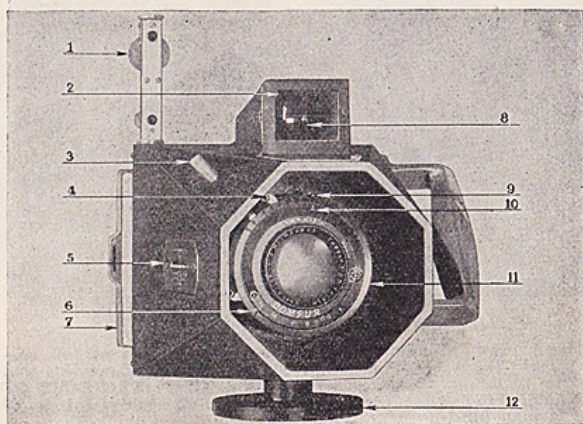
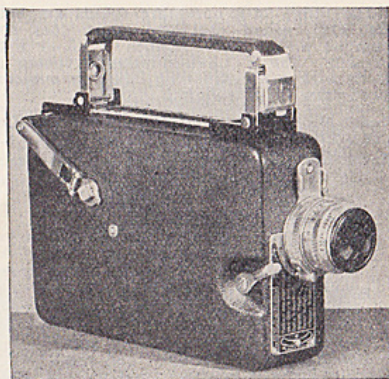
- Model K-8 with F3.5 lens..... \$29.95
- Model K-8 with F2.7 lens..... 39.50
- Model K-8 with F1.9 lens..... 69.50

MAGAZINE CINE KODAK (16 MM)

This remarkable 16 mm. camera takes the thumbs out of movie making. You can load it with your eyes shut. No threading—the film comes in magazines. Slip a magazine into the camera, close the cover, and you're set to shoot. When you want to switch films, you can do it in a jiffy. Just take out a magazine—totally, or partly exposed—slip in another. The magazine protects the film. Not even a single frame need be wasted. Footage meter on each magazine—whether it's in camera or carrying case—shows how much film there's left.

Three speeds—Normal, Half Speed, Slow Motion—16, 8, or 64 frames per second. Under your finger, as you shoot, a gentle "pulse" button keeps you posted on scene length while your eye remains at the finder. Standard with this camera in a Kodak Anastigmat F1.9 lens, interchangeable with seven accessory lenses, (circular on request) by the simplest, most positive method ever devised. The full-vision, eye-level finder system competently serves all eight lenses.

- MAGAZINE CINE-KODAK (16 mm.).....\$112.50
- With standard combination case for camera and accessories 123.75



SKYVIEW CAMERA

1. Range Finder.
2. Indicator for Parallax Correction.
3. Shutter Release.
4. Shutter Winding Lever.
5. Focusing Dial.
6. Index for Setting Diaphragm.
7. Film Pack Adapter.
8. View Finder Cross Hairs.
9. Lever for Delayed Action Release.
10. Shutter Speed Indicator.
11. Shutter Adjustment Ring.
12. Tripod Adapter.

Featuring the utmost versatility. Primarily designed as an aerial camera, the Skyview Model D lends itself to practically every type of photographic work. Made in a one-piece aluminum casting, accurately manufactured to most exacting tolerances. It is designed and built in accordance with the requirements of latest developments in modern engineering. Fitted with the best throughout. It anticipates a new need in camera equipment; and supplies this demand most efficiently. Carl Zeiss Tessar 15cm. lens in Compur shutter, interchangeable back using standard 3 1/4 x 4 1/4 Graflex accessories. Focusing dial through side of camera for quick reading, scale reads from five feet to infinity. To the user requiring a precision, all purpose camera, we take pleasure in recommending the Skyview Model D. Camera, film pack adapter, tripod adapter, and carrying case.....\$195.00

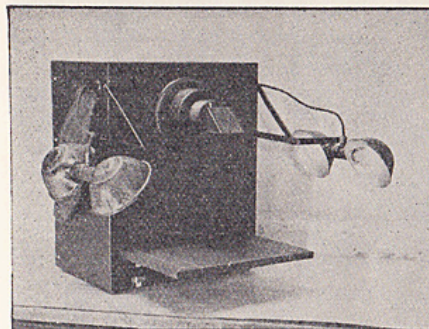
EAGLE PHOTO COPYING MACHINE

A low priced copying machine for making direct copies of documents, drawings, legal papers, etc. Will make copies full size or 20% reduction of originals of 8 1/2"x11" size or smaller.

Detachable reflectors accommodating 150 watt bulbs provide ample illumination for quick work. Exposures range from ten to twenty seconds according to paper used; a built-in paper magazine accommodating 1/2 gross paper enables operator to load paper holder rapidly through opening on side of box. Developing can be carried on inside of machine in bottom compartment or a storage box can be inserted in which exposed paper can be kept for later development.

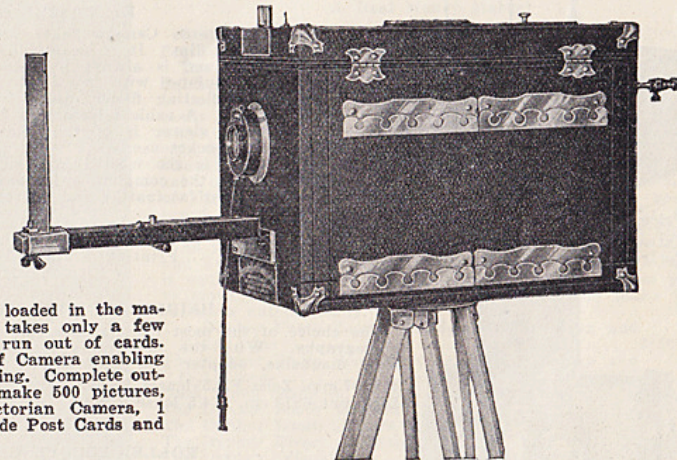
Comes equipped with Wollensak Lens, silver surface reversing mirror, reflectors, 4 150-watt lamps, 2 10x12 enamel trays and paper storage box. Requires 24"x36" table space.

- Complete as illustrated.....\$190.00
- Defender Photo-Writ Paper 8 1/2"x11"....Per Gross 4.35
- 500 Sheets 14.15



No. 55 VICTORIAN POSTCARD CAMERA

This Camera makes pictures on post cards, vertically, for portraits, and horizontally for groups and landscape pictures. It measures 14x10 1/2 x 8 3/4. It is made of wood covered with imitation leather. It has a special anastigmat F6.3 lens, mounted in a shutter. Plate holder is adjusted in middle of Camera for post cards; it is attached with a rod on back of Camera enabling to adjust focus of any distance from five feet to 100 feet or over. The magazine is light-proof; it holds 50 cards inside of box which is loaded in the machine in broad daylight. It takes only a few seconds to reload after you run out of cards. It has an opening in back of Camera enabling you to look through for focusing. Complete outfit with enough supplies to make 500 pictures, consisting of 1 No. 55 Victorian Camera, 1 Adjustable Tripod, 500 Bromide Post Cards and 2 Developers \$75.00. Camera only \$65.00.



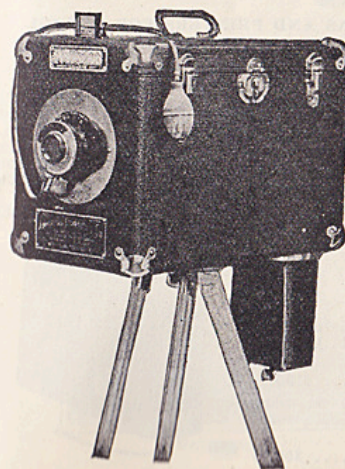
EAGLE TINTYPE AND QUICK FINISH POST CARD CAMERA NO. 15

To fill the demand constantly being made upon us by some of our customers for a camera to take regular size post cards in addition to the smaller sizes, we have introduced our new model, the Eagle Camera No. 15, which takes tin plates and post card sizes 1 1/4 x 2 1/2, 2 1/2 x 3 1/2, 3 x 4 1/2, 3 1/4 x 5 1/2, and buttons.

The No. 15 Eagle Camera measures 14 x 14 x 8 1/2 and weighs 9 lb. The lens is specially adapted to cut 3 1/2 x 5 1/2 size post cards as well as the smaller sizes, and makes sharp and clear pictures.

Complete outfit No. 15 Eagle Camera with enough supplies to make 500 pictures, consisting of:

- 1 No. 15 Eagle Camera.....\$42.50
- 1 No. 2 1/2 Tripod..... 6.75
- 100 Post cards 3 1/4 x 5 1/2..... 3.25
- 100 Post cards 3 x 4 1/2..... 2.85
- 100 Black Back cards 2 1/2 x 3 1/2 1.60
- 100 Black Back cards 1 3/4 x 2 1/2..... .80
- 100 Mounts 2 1/2 x 3 1/265
- 100 Mounts 1 3/4 x 2 1/235
- 4 Developer 1.10
- 1 Graduate Glass30
- 1 Pair Tweezers30
- 100 Buttons80
- 100 Button Frames 1.75
- Ferrottype Plates 1 3/4 x 2 1/2, per 100 1.25
- Ferrottype Plates 2 1/2 x 3 1/2, per 100 2.25



C

EAGLE CAMERASCOPE

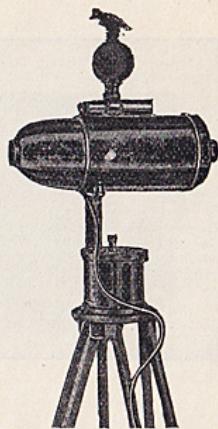
It is equipped with a high speed double lens 1.3.5 (60, MM), fixed focus and takes pictures from 5 to 8 ft. distance from the Camerascope. Easy to operate without knowledge of photography after reading instructions.

Weight, 7 lb. Made of solid brass, all nickel-plated, brightly polished.

Takes button pictures 1 in. in diameter; capacity over 300 per hour, and works faster than any other machine on the market.

Price of camera.....	\$50.00
Button plates	per tube 100 1.25
Button frames	per 100 1.50
Developer package30
Tripod	6.75

Complete Eagle Camerascope outfit, with enough supplies to make 300 pictures

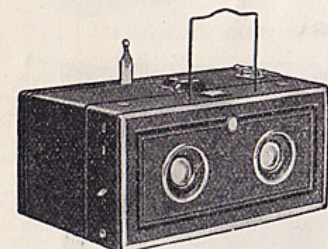
**EHO STEREO CAMERA**

For 2 1/4 x 3 1/4" roll film

The Eho Stereo Camera takes 2 1/4 x 2 1/4" pictures on standard 2 1/4 x 3 1/4" roll film. It is beautifully made, has excellent double lenses, F.11, and is always in focus for all objects beyond six feet. It is equipped with two diaphragms, F.11 and F.12, brilliant waist-level reflecting finder, and wire finder for convenient eye-level sighting. A cable release may be used.

The stereo viewer is of the folding type, very compact, and suitable for pocket use.

This outfit is the most inexpensive and efficient offering ever conceived for the complete enjoyment of three-dimensional work, one of the most fascinating and interesting branches of photography.



Price, including viewer	\$12.50
Extra Viewers, each	\$2.00
Portrait Lenses, each	1.50
Yellow Filters, each	1.50
Printing Frame	1.50

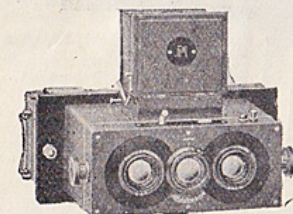
HEIDESCOPE STEREO CAMERA

The choice of the most exacting workers in this fascinating branch of photography. With the new reflecting focusing finder, complete with plate magazine, adapter and case.

	Weight	Price
45x107 mm. Zeiss F.4.5 lenses 5.5 cm.	20 1/2 oz.	\$230.00
Ditto but 6x13 cm. F.4.5 lenses 7.5 cm.	27 3/4 oz.	270.00

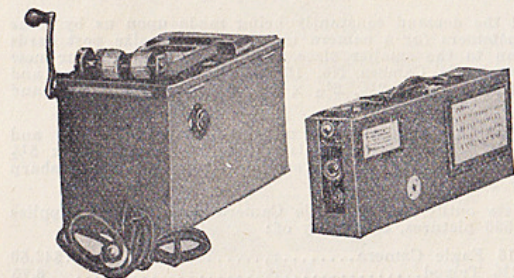
ROLLEIDESCOPE CAMERA

Same equipment as the Heidescope but uses roll film. 6x13 cm. size uses No. 120 film

**CAMERAS AND PRINTERS FOR SCHOOL AND IDENTIFICATION WORK****Eagle Identograph Camera**

Takes 100 ft. of Negative Unperforated Roll Film 1 3/8" wide which gives 500 exposures 1 3/8 x 2 3/8", fitted with F.3.5 Hlex Anastigmat Lens, fixed focus at four feet, brilliant finder, box tripod, Identograph Holder, slates and reflector with holder

Camera only

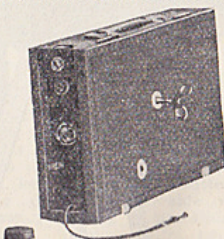
**EAGLE MAGAZINE CAMERA MODEL 2**

Takes 200 ft. of 1 3/8" wide unperforated Negative Roll Film giving 1000 exposures with one loading. Fitted with F.4.5 Bausch and Lomb Lens in Hlex Shutter. Finished in Leatherette. Can be reloaded in daylight.

Price

Eagle Follow Printer. For use with Identograph Camera Negatives, takes 200 ft. 2 5/8" Wide Unperforated Paper especially made for school work. Prints fast and puts a border on each print.

Price of Follow Printer.....

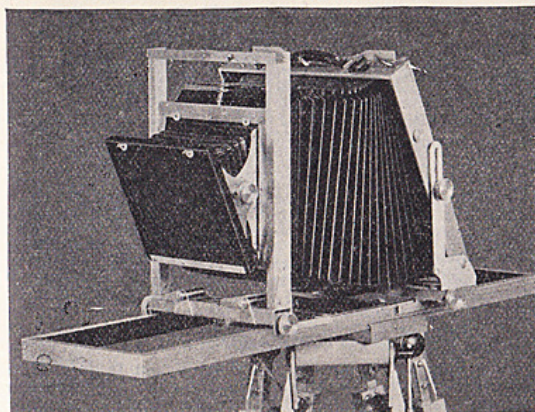


C

EASTMAN COMMERCIAL VIEW CAMERA (ALL METAL)

An all metal Commercial Camera, built principally of aluminum to withstand the hard use given to cameras of this type. Very versatile due to extreme adjustments of both front board and back. The front has horizontal slide as well as vertical rise and fall. With the accessory reversible swinging lens board, which operates with its own bellows, complete effective use can be made of the swing back. Back has both vertical and horizontal swings of 20 degrees. Ground Glass is ruled and cut off boards are provided for making two and four exposures on plate. Measurements 6 1/2 x 13 1/4 x 14 1/2 high; Bellows extension 30 inches. Weight 13 3/4 lbs.

Camera and 1 plate or film holder...\$148.75
Reversible Swinging Lens Board... 13.05
Black Fiber Carrying Case..... 10.80

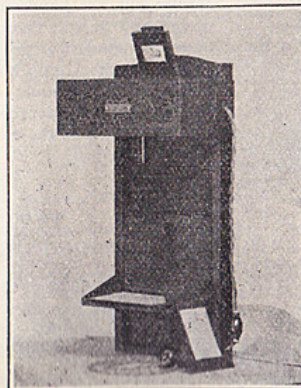
**THE DUNKER BOOTH CAMERA (A Real Money Maker)**

With this camera four poses are made on a strip of Direct Positive Paper, size of each picture being 1 3/4" x 2".

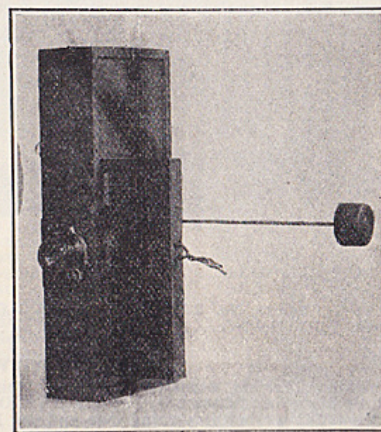
The Dunker Photo Booth is made of wood attractively finished in dark mottled red and brown. The booth which is built in one complete unit is light in weight and may easily be carried by two men. Including the dark room which is collapsible, the entire set requires a floor space of only 4x5 feet, while it is 6 feet 6 inches in height. For the Photographer who wishes to build his own dark room, the back of the booth is conveniently grooved for the insertion of three walls and a roof which may be made of panel board. Because of its convenient size and light weight, the entire outfit may be transported in a small truck or trailer.

As you will note from the prices shown below the Camera and Booth are supplied separately if desired. Each Camera is equipped with The "Single Control" which enables you to move up the paper, turn on the lamps and make the exposure automatically.

The Dunker Photo Booth Complete with Camera and F 2.6 Lens	\$250.00
The Dunker Photo Booth Complete with Camera and F 1.9 Lens	285.00
Dark Room ready to attach	40.00
The Dunker Booth Camera only	100.00
The Dunker Booth Camera only with F 1.9 Lens ..	135.00
The Dunker Direct Enlarger	30.00
The Dunker Visualizer	30.00
200 Watt P.S. Mazda Lamps (two required) each80
Photo Flood Lamps (4 required)	each .25
250 Ft. Roll Direct Positive Paper 1 1/2", per roll...	5.50



Enlarger



Dunker Camera

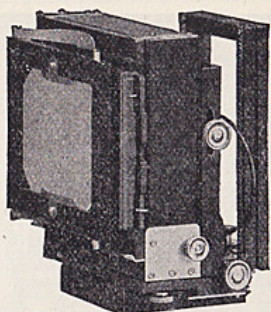
C

UNIVERSAL JR. VIEW CAMERA 3 1/4 x 4 1/4

Just the camera for pictorial workers, advanced amateurs, passport and chauffeur license studios.

Maximum Bellows 9 1/8", minimum 3", Lens Board 3"x3", Rising Front and Tilting Back, Camera comes with 2 Lens Boards, Carrying Case and One Plate or Cut Film Holder for.....\$29.50
 Extra Plate or Cut Film Holders, each..... 2.13
 Extra Lens Boards 3"x3"..... 1.00

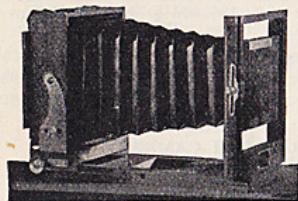
Lens and Shutter not included in above prices. Let us know the kind of work you wish to do and we will quote you on a suitable Lens.



No. 33A VIEW CAMERA

No. 33A View Camera is equipped with rising and falling front, vertical and horizontal swings, single extension bed. It has rack and pinion back focusing, reversible ground glass back, cut off board for using half of film or plate, 13-inch bellows extension, 4 1/2 x 4 1/2-inch lens board. Racks close enough to permit the use of wide angle lenses. The finish is flat walnut with metal parts satin finished. The camera weighs 4 3/4 pounds.

Price with One Holder.....\$24.65
 Carrying Case—Extra 5.00



ANSCO UNIVERSAL VIEW CAMERAS

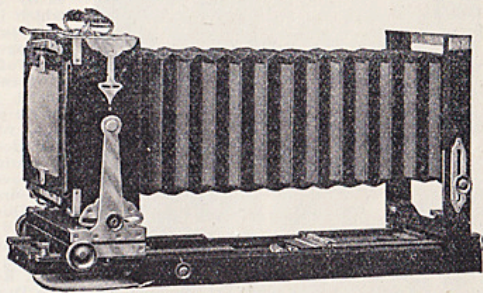
5 x 7, 8 x 10 and 7 x 11

These are the new Ansco view cameras which have received so much favorable comment at conventions and elsewhere. They were designed in response to a general demand for new equipment of this type incorporating better features with greater rigidity and strength. Owners pronounce them the best view cameras made.

Specifications

	5x7	7x11 or 8x10
Maximum focal capacity.....	20 1/2	26 1/2
Minimum focal capacity.....	4	4
Size of lens boards.....	5x5	7 1/2 x 7 1/2
Cameras	\$55.25	\$63.75
Price of Extra Holders.....	2.34	3.00
Price of extra lens boards....	.90	1.13
5x7 adapter back for 8x10 camera.....	15.00	

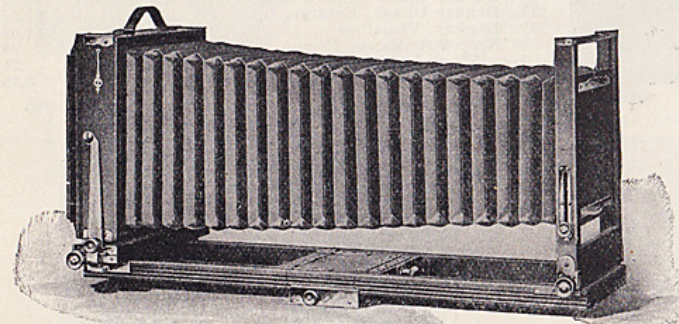
Case holds camera and three holders and is made of heavy leatherette reinforced with metal at corners



EASTMAN VIEW CAMERAS NO. 2D

5 x 7 8 x 10

Cameras that are built for service but are handsome in design and finish. They have every adjustment of practical value, large front boards, bellows supports and a sliding tripod block for centering the weight of the camera over the tripod.



	5x7	8x10	5x7	8x10
Bellows draw.....	23 in.	29 1/2 in.	4 1/2 x 4 1/2 in.	6x6 in.
Weight	7 lb.	11 1/4 lb.	11 1/4 x 9 3/8 x 5 3/4 in.	14 7/8 x 13 x 5 1/2 in.
Eastman View Camera No. 2-D with Carrying Case and one Eastman View Plate or Portrait Film Holder.....	5x7	8x10	59.50	\$68.00

EASTMAN VIEW CAMERA (11x14)

For making 11 x 14 negatives we supply this instrument. It is of most substantial construction. Bellows draw 37 inches. Lens board—5 3/4 x 5 3/4. Outside dimensions closed—19 3/8 x 17 1/8 x 5 3/8. Eastman View Camera, with carrying case and one Plate or Film Holder..... \$106.25

Write us regarding Lenses for the above cameras or see Lenses on pages 144-146

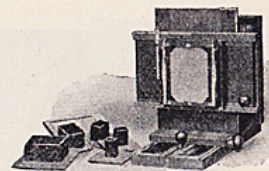
C

FOLMER MULTIPLE CAMERA

For studios where photographs are made for chauffeurs' licenses, post cards and commuters' passes; at resorts, and for general 5x7 work as well, this new outfit fills a real need. The foremost feature of this new Folmer product is the multiple back. This device is semi-automatic in action—maximum production results with but a minimum expenditure of effort on the operator's part.

A set of six kits or masks is provided so that two, four, nine, sixteen or twenty head and shoulder portraits may be made on a 5x7 film or plate, and there is a kit for four full length portraits, as well. This, of course, is in addition to the straight 5x7 negative for portrait or group work. Moreover, any of these exposures, except the four full lengths, may be made vertically or horizontally simply by transposing the plainly marked spacing rods that control the action of the back, and, of course, reversing the holder in the back. This reversible feature, simple and convenient, accords the camera exceptional versatility.

Specifications: The Folmer Multiple camera is substantially made of cherry and mahogany, dark, hand-rubbed finish; metal parts are sandblasted. The lens board measures 6 3/4 x 6 3/4; focal capacity of camera, 19 in. Weight but 15 lb.; dimensions, closed, 18x16 1/2 x 23 in. Folmer Multiple Camera with set of six kits and one 5x7 film or plate holder (without lens or shutter) \$ 81.90
 Complete as above and with No. 34 Kodak Anastigmat F.4.5 lens (8 1/2 in.) and Compound Shutter.. 171.90
 Extra 5x7 film or plate holders, each..... 2.48
 Extra lens boards, each..... 1.25
 Camera Back only..... 40.50



CLINICAL CAMERA

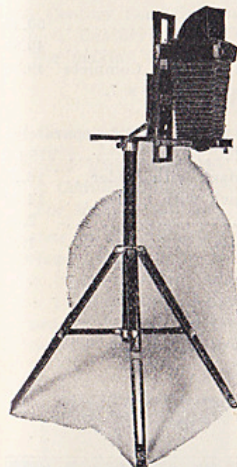
The use of photography as a means of clinical record is becoming more important each year.

Provision is made for photographing to a definite scale—by setting the camera to the desired scale and simply moving the camera back and forth, until the subject is in focus, a series of photographs can be made to show the changed condition over a period of time.

Lantern slides can be made from negatives made with the Clinical Camera as well as from Radiographs.

Eastman Clinical Camera including 5 x 7 Camera, Kodak Anastigmat Lens F7.7 in No. 2 Kodamatic Shutter. One double 5 x 7 cut film or plate holder. One Lantern Slide Back and one Enlarging Back. Collapsible Stand with tilting top. Two Eastman Floodlights.

Complete	\$144.00
5 x 7 Camera only, without lens.....	67.50
Kodak Anastigmat Lens F7.7 fitted to No. 2 Kodamatic Shutter.....	33.75
Camera Stand	18.00
Lantern Slide Back.....	12.60
Enlarging Back	12.60
Lantern Slide Plate Holder.....	3.00
Extra Lens Board, 4 1/4 x 4 1/4 inches.....	1.00



Eastman Clinical Camera Showing Tilting Top and Stand

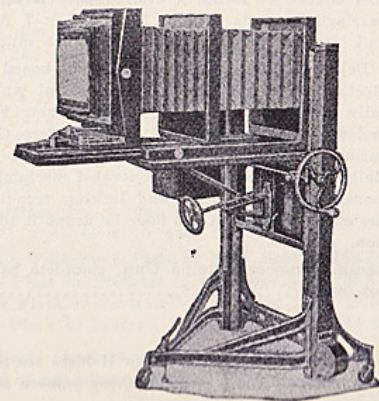
ANSCO NO. 5 STUDIO OUTFIT

This outfit has proved so adaptable and so satisfactory for all classes of studio work that we have discontinued the building of other models except on special order. Photographers who have discarded other equipment for it say that it gives a new thrill to a routine operation. This is because of its complete responsiveness to the operator's need of the moment, when convenience of adjustment means so much. To this convenience are added accuracy, rigidity, and quietness of movement, with substantial construction and a richness in cabinet work and finish which is professional to the last detail.

Raising, lowering, tilting, swings, bed extension, rough and fine focusing actions—in fact, all desired features—are present, and for long-focus work the bellows has a draw of 40 inches. For such work the camera may be run forward on the platform if desired, bringing all movements within as easy reach from focusing position as when using smaller lenses that do not require so much bed extension. Equipped with reversing sliding ground glass attachment for 8 x 10 double plate or film holders, 5 x 8 diaphragm, and reversing adapter for 5 x 7 holders, with 3 1/2 x 5 diaphragm. Space for adapter on front of stand, so that it will not get stepped on or mislaid. Holder rack is provided also. The outfit is beautifully finished in Adam brown.

Price complete, with one holder each 8 x 10 and 5 x 7..\$164.05

Extra holders for either plates or cut films, as desired,	
8 x 10.....	3.16
5 x 7.....	2.48



X EASTMAN DIAPHAX X-RAY FILM SAFETY BASE

Table with columns for film size (5x7, 6 1/2 x 8 1/2, 8x10), Doz. Pkgs., Cases, 6 Doz. Pkgs., 5 Case Lots (6 Doz. Pkgs.), and price per case.

EASTMAN PERIAPICAL DENTAL X-RAY FILMS

Safety Base

Radia-Tized (1 1/4" x 1 5/8")

Table for Radia-Tized films: AD-2 films per packet, 1 Gross Dispenser package (144 packets) \$6.00, 24 packets 1.10.

Table for AD-1 film per packet: 1 Gross Dispenser package (144 packets) 5.00, 24 packets .90.

No. 0 Radia-Tized (7/8" x 1 3/8")

Table for No. 0 Radia-Tized films: O-AD-2 films per packet, 24 packets 1.10.

C and CC Types (1 1/4" x 1 5/8")

Table for C and CC Types: C-D-Regular-Slow, 2 films per packet, 1 Gross Dispenser package (144 packets) 4.50, 24 packets .85.

Table for C-S-Regular-Slow, 1 film per packet: 1 Gross Dispenser package (144 packets) 3.75, 24 packets .70.

Table for CC-D-Extra-Fast, 2 films per packet: 1 Gross Dispenser package (144 packets) 4.50, 24 packets .85.

Table for CC-S-Extra-Fast, 1 film per packet: 1 Gross Dispenser package (144 packets) 3.75, 24 packets .70.

EASTMAN BITE-WING DENTAL FILM PACKETS

Per package of 1 doz. packets

Table for Bite-Wing film packets: Type 1 \$0.65, Type 2 .75, Type 3 .85.

OCCCLUSAL FILM

Regular and Super Speed

Size 2 1/4 x 3

Table for Occlusal film: Per package of 1 doz. pairs \$2.00.

EASTMAN X-RAY FIXING POWDERS

Table for X-ray fixing powders: No. 3-Package sufficient to prepare 1 gal. solution \$0.60, No. 4-Package sufficient to prepare 5 gals. of solution 2.50.

EASTMAN PERFECTED X-RAY INTENSIFYING SCREENS

Table for X-ray intensifying screens with columns for size (5 x 7, 6 1/2 x 8 1/2, 8 x 10), Per Pair price, and larger size (10 x 12, 11 x 14, 14 x 17) Per Pair price.

GENERAL INDEX

Table A: Acid Fixing .59, Actinometers .53, Activol .82, Adapters, Film Pack .114, Adapters, Lens .142, Adhesive, Office .177, Adhesive Wafers .7, Air Brushes .1, 2, Air Compressor Outfit .2, Albums .3-7, Alkalis .60, Amido .82, 85, Antinous Release .207-208, Aprons .9, Art Corners .8, Art Gum .66, Arc Lamps .156, Athenon .82.

Table B: Baby Holder .9-10, Background Brackets .18, Backgrounds .11-17, Background Carrier .17, Background Print-in .11-12, Backing Cloth .18, Backing Plate .60.

Table C: Backs .10, 72, Bags, Changing .56, Balopticians .192, 195, Bath Holders .209, Battery Tester .149, Belcolor Film .72, Bench .19, Binascope .20, Binders .4, Binding Strips, L. S. .140, Binoculars .19-20, Bleachers .24, Bloodit .60, Blotters .20, Blue Print Powders .60, Bolting Cloth .71, Books .20-23, 27, 53, 77, Bottles .24, Boxes, Lantern Slide .140, Bromide Solution .60, Bromoil Supplies .24-28, Brushes .27-28, Bulb and Tubing .208-209, Bulbs, Electric .135-138, Camera Dressing .63, Cameras .29-50.

Table D: Cameras, Movie .40-42, Cameras, Color .39, Camera Stands .51, Candles .51, Cans, Humidor .133, Cans, Storage .176, Caps, Lens .142, Carbons .52, Carbon Supplies .52-54, Carboys .24, Carboy Tilter .55, Cardboard .165, Carrying Cases .54-55, Celluloid .55, Cement .55-56, 177, Chairs .56, Changing Bags .56, Charcoal .56, Chart, Color .53, Chemicals .57-66, Chlorquinol .83, Chromatone .73, Circle Scribe .201, Clair .25, Cleaner .25, 66-67, Clips .67, Clocks .68, 70, Cloth Backing .60.

Table E: Cloth Diffusing .86, Cloth Silk Bolting .71, Cloth Tracing .71, Coccine .60, Collodion .71, Color Charts .77, Color Filters .116-119, Color Photography .72-77, Colors .78-81, Comic Foregrounds .17, Copscope .196, Corners .8, Corner Trimmer .226, Corrugated Board .159, Cotton, Absorbent .81, Cotton Negative .71, Couplers .208, Cover Glass .140, Crayon Sauce .80, Cutters .225-228, Cutters, Frontboard .142.

Table F: Darkroom .82, Demijohns .24, Densitometer .104, Desenol .82, Desensitizers .82, Desk, Transfer .26, Developers .82-85, Developing and Printing, 3rd Cover .84, Developing Powders .84, Developing Powders, X-Ray .245, Diagnosis Chart .106, Diamonds .128, Dianol .83, Dies, Embossing .95, Diffusing Cloth .86, Diffusion Disks .86, Dippers .86, Display Racks .86, Dodger .86, Dry Mounting .91, Dry Mounting Iron .91, Dry Mounting Press .90, Dryers .61, 86-90, Dufay Film .74, Dupac Film .73, Duplicators .91, Dybro .75, Dyes .74, 91-92.

Table G: Eagetol .83, Easels .92-93, Electric Bulbs .135-138, Elon .83, Embossers .93-95, Emulsion Remover .93, Enclosures Print .95, Enlargers .96-100, Envelopes .101, Envelope, Proof .101, Envelopes, X-ray .245, Eradicator, Color .81, Etching Tools .25, 101-102, Evaporating Dishes .102, Exposure Meters .102-106, Exposure Record .105, Exposure Valve .209, Extension Cord .152, Eye Rest .107.

Table H: Fabric .107, Fans .107, Faucet Connections .244, Ferolene .62, Ferrotype Plates .183, Files .107-109, Film, Belcolor .72, Film, Color .72-74.

GENERAL INDEX-Continued

Table I: Film Contrasto .109, Film, Dental .246, Film, Dufay .74, Film, Dupac .73, Film, Ivora .109, Film, Kodachrome .76, Film Pack Adapter .115, Film Packs .112-113, Film Sheaths .114, Film, Tri-Pac .74, Film, Wash Off .74, Films .109-114, Films, Motion Picture .114, Films, X-Ray .246, Filter Color .116-119, Filter Holders .118, Filter, Water .115, Filtering Paper .173, Filters, Ray .116-119, Finders .120-121, Finger Tips .121, Finlay Process .75, Fitting Tool .121, Fixing Boxes .121-122, Flax .59, Flash Bags .123, Flash Bulbs .135, Flash, Cleaner .66, Flash Lamps .123, Flash Powder .124, Floodlights .136-138, Focusing Cloth .82, 124-125, Focusing Device .124, Focusing Film .125, Foot Pump .2, Foot Switch .212-213, Foregrounds, Comic .17, Forms, Brass .126, Frames .125-127, Frames, Printing .187-189, Frisket Paper .173, Funnels .127.

Table J: Garometer .76, Gas Outfit .2, Gelatine .128, Glass .128, Glass Cutters .128, Glass, Lantern Slide .140, Glass Liquid .61, Gloves .128, Glue .129, Glycin .83, Graduates .129-130, Ground Glass Substitute .61, Gum, Paper .173.

Table K: Haloette .238, Hand Pump .2, Hangers, Pushless .197, Hangers, Tank .131, Hardeners .130, Head Rest .132, Head Screens .131-132, Heater .132, Hinges .132, Holder, Filter .118-119, Holder, Graduate .130, Holder, Paper .92-93, Holders .132-133, Hoods, Lens .143, Hopper .25, Humidguide .133, Humidifier .107, Humidor Can .133, Humidtherm .133, Hydrochinone .83, Hydrometers .133, Hypo .58, Hypo-Killer .61.

Table L: Imprint .170, Inks .24-25, 133, 134, Intensifier .134, Intensifying Screens .246, Iodizer .71, Iris Len Flange .142, Iron, Dry Mounting .91, Ivory .134, Jacks .51, Jars .134, Jellitac .178, Jugs .179, Kits .135, Knife .135, Kodachrome .76, Kodacoat .62, Kodak .65, Kodalk .60, Kodaloid .55, Kodapod .236, Kodascope .193, Kodaslide .192, Kodolon .83, Kodoscope Sundries .193, 210, Lamps, Arc .156, Lamp Control .138, Lamps, Darkroom .138-140, Lamps, Electric .135-138, Lamps, Enlarging .137-138, Lamps, Photoflash .135, Lamps, Photoflood .136-138, Lantern Slide Goods .140-141, Lantern Slide Mats .141, Lantern Slides .140, Lavaproy .67, Leads, Retouching .179, Leather, Dressing .63, Lens Adapter .142, Lens Boards .142, Lensboard Cutters .142, Lens Caps .142, Lens Cleaner .66, Lens Hoods .143, Lens Shades .134-143, Lenses .144-147, Lenses, Condensing .147, Lenses, Supplementary .146-149, Leromystic .61, Lero Proof .63, Lero Transfer Solution .64, Levels .149, Light Boxes .140, Lighting Chart .106, Lighting Equipment .149-156, Linen Tester .158, Litmus Paper .173.

Table M: Magnarule .157, Magnesium .124, Magnesium Ribbon .124, Magnifiers .157-158, Magnifying Glass Holder .157, Mailing Board .159, Marlene .78, Marl, Eagle .61, Masking Tape .214, Masks .159-164, Mat Board .165, Mats, L. S. .141, Medium Oil .25, Meritol .83, Metol .83, Mezzo Printing Plate .160, Microscopes .157-158.

Table N: Microscopes .157-158.

Table O: Microscopes .157-158.

Table P: Microscopes .157-158.

GENERAL INDEX—Continued

Mirror Machines 165	Mirrors 164	Mortar and Pestles 165	Moulding for Shutters 209	Mounting Corners 8	Mounts 165-170	Movie Cameras 40-41	Multiplex 91	Multitone 64
N								
Neckpod 230-236	Neg-a-Chart 106	Negative Cotton 71	Negative Files 107-109	Negative Marker 170	Negative Pockets 171	Negative Preservers 171	Negative Racks 171	Nego Dope 200
Nego Fake 172	Nego Red. Dodger 60	Nego Rubber 198	Nostane 66	NuAcne Corners 8				
O								
Oil Paper 24	Oil Supplies 24-27	Opaque 171-172	Optipod 234	Ortol 83	Outfit, Air Brush 2	Outfits, Bromoil 27	Outfits, Carbon 53	Outfits, Carbro 54
Outfits, Film Tank 221	Outfits, Gas 2	Outfits, Hand Pump 2	Outfits, Oil 27	Outfit, Tank 220-221	Outfits, Titling 223-224	Outfits, Printing 172	Outfits, Retouching 199	Outfits, Splicing 210
Outfits, Trichrome 77	Overflow Stopple 241	Ozalide Paper 176						
P								
Pails 173	Paints 78-81	PaKo Sundries 222	Palettes 26-31	Paper, Blue Print 176-177	Paper, Bromoil 24	Paper Cans 176	Paper, Oil 24	Paper, Wax 54
Papers 173-177	Paramidophenol 83	Passe-Partout Goods 177	Paste 177-178	P. D. H. 83	Pencils 178-179	Pens 101	Photo-Flat 62	Photofool Control 138
Photo Flood Lamps 136-138	Photomailers 159	Photoscrypt 224	Pigments 24-25	Pitchers 179	Plates, Agfa Color 72	Plates, Dry 180-182	Plates, Ferrotype 183	Plates, Squeegee 210
Plates, Washers 240-241	Pockscope 19	Pola Screen 146-147	Polishing Solution 62	Portrait Attachments 147-149	Press, Embossing 95	Press, Print 183	Press, Transfer 26-27	Print Machine 186
Printing Mask 159-164	Printers 183-187	Print Flatener 62-191	Print Lustre 65	Print Paddles 189	Print Roller 189-190	Print Straightener 62-190-191	Print Tongs 191	Print-in-grounds 11-12
Printing Frames 187-189	Probus 62	Projectors 192-196	Proofing Machine 187	Pump, Air 2	Punch 196	Push Pins 196-197	Push Points 197	Putz Pomade 198
Pyro 84								
Q								
Quickdry 61								
R								
Racks, Developing 222	Radio Mats 141	Radioticons 192	Range Finder 120-121	Ray Filters 116-119	Re-developers 64	Reducers 197-198	Reducing Glass 198	Reel Case 54
Reels 193	Reflectors 149-156, 198	Respirator 199	Retouching Frames 199	Retouching Machine 199	Retouching Outfits 199	Retouching Solution 199-200	Re-winder 210	Rocker System 242
Rodinal 84	Rods, Stirring 211-223	Rollapod 236	Rubber Cement 56	Rubber, Plastic 26	Rubber Solution 56	Rubinol 84	Ruler 200-201	Safelights 139
Scales 201-203	Screen Sensitometric 106	Screens, Pola 146-147	Screens, Projection 203-204	Self-Timer 204	Sensitizing Solution 63	Sepia Solution 63, 64	Septone 64	Sharpener, Retouching 179
Sheaths 114	Shoes, Tripod 234	Short Stop 130	Shutter Coupler 208	Shutter Extension 208	Shutter Release 207-208	Shutters 205-207	Silver Baths 209	Siphon 241
Sizing Solution 81	Sleeve Protectors 209	Smocks 209	Spirit Sensitizer 53	Splicers 210	Sponges, Dryer 86-87	Spot Lights 154-156	Spotting Colors 79	Spreader 26
Squeegee Boards 53	Squeegee, Mechanical 76	Squeegee Plates 210	Squeegee Solutions 62	Squeegees 210	Stains 91	Stain Remover 67	Staingo 67	Stereoscopes 211
Stirring Rods 211	Stipple 241	Studio Registers 211-212	Stumps 26	Switches Foot 212-213	Synchronizers 213-214			
T								
Table, Drawing 92	Tablet Crusher 211	Tabloid Preparations, 59, 63, 64, 82						
Tacks, Thumb 196	Tanks 215-221	Tanks, X-Ray 220	Tape 214-215	Telescope 19	Test Chart 119	Tester, Battery 150	Testing Sheets 73	Thermometer Stirring Rods 223
Thermometers 222-223	Thumb Tacks 196	Timers 68-70	Timers, Self 204	Tissue Paper 173	Title Tabs 7	Titling Outfits 223-224	Titling Strips 141	Toners 63-64
Tongs, Print 191	Toning Solution 63	Topping Powder 64	Tracelene 86	Tracing Cloth 71	Transfer Desk 26	Transfer Press 26-27	Transfer Solutions 64	Tray Coating 65
Tray Patch 64	Trays 224-225	Trichrome Process 77	Trimmers 225-228	Trimming Boards 227-228	Tri-Pac Film 74	Tripod Accessories 233-237	Tripod Brace 233-235	Tripod Shoes 234
Tripod Tops 235-236	Tripods 228-233	Tubing Coupler 208						
V								
Varnish 65-66	Varnish, Retouching 199-200	Ventilators 237	Viewer 237-238	Vignettes 238-239	Viscose Sponge 86-87	Vise, Lantern Slide 140		
W								
Wash Off Film 74	Washers, Film 240-243	Washing Boxes 240-241	Water Filters 115	Wax, Tacking 65	Waxing Solution 77	Wedges 77	Weightmeter 203	Weights 203
Wringers 244								
X								
X-Ray Goods 245-246	X-Ray Tanks 220							

DEVELOPING - PRINTING - ENLARGING COPIES - LANTERN SLIDES

Our facilities are better than ever for properly handling your finishing and all orders are given prompt and careful attention.

It Will Pay You to Give Us a Trial

30 Hour Service on Roll Film and Film Pack Developing

Enlargements One Week

All sizes, Rolls—6 or 8 exp.	\$0.10
All sizes, Rolls—10 and 12 exp.15

Developing

Plates and Cut Film

Film Packs		4 x 5 or smaller Plate or Film	\$0.05
Up to 2 1/2 x 4 1/425	5 x 7 or smaller Plate or Film10
3 1/4 x 4 1/4 to 4 x 635	8 x 10 or smaller Plate or Film20
5 x 750	11 x 1475

FINE GRAIN DEVELOPING AND PRINTING OF MINIATURE FILM

Developing, per roll	\$0.30	3 1/4 x 5 1/2 Prints B. & W.	\$0.20
3 1/4 x 4 1/4 Prints B. & W.15	Sepias	\$0.10 per Print extra

For larger prints from Miniature Film consult regular Enlarging schedule below.

PRINTING—Glossy or Semi-Matte

	S. W.	D. W.	Sepia	M't'g Extra
V. P. K. or smaller	\$0.04	\$0.06	\$0.06	\$0.03
Brownie No. 1 and 2 (No. 117 and 120)05	.07	.08	.08
1-A (No. 116)06	.08	.09	.05
3 1/4 x 4 1/4 (No. 118 and 124)07	.08	.10	.05
3 1/2 x 3 1/2 (No. 101)07	.10	.10	.05
2-C (No. 130)07	.10	.10	.06
3-A (No. 122) (and 9 x 12 cm.)08	.12	.10	.06
4 x 5 (Nos. 103, 104, 123)09	.12	.10	.06
4 1/4 x 6 1/2 (No. 126)15	.20	.25	.07
5 x 715	.20	.25	.10
5 x 820	.25	.30	.10
6 1/2 x 8 1/225	.30	.40	.15
8 x 1025	.30	.50	.15
Post Cards08
Post Cards per 100	6.00

All Double Weight Black and White Prints up to 4 x 5 unless otherwise specified are furnished on Plate Sunk Deckle Edge Paper at regular Double Weight prices shown above.

ENLARGING

Size	Plain B. & W. Unmounted	Plain Sepia Mounted	Plain B. & W. Mounted	Plain Sepia Mounted	Art Proof B. & W. or Buff	Art Proof Sepia
3 1/4 x 5 1/2 (or P. C.)	\$.25	\$.35	\$.40	\$.50	\$.75	\$1.00
5 x 735	.45	.50	.60	.75	1.00
6 x 850	.65	.75	.90	1.00	1.25
6 x 10 or 8 x 1060	.75	.85	1.00	1.25	1.50
11 x 14	1.00	1.25	1.50	1.75	2.50	3.00
14 x 17	1.75	2.00	2.50	2.75	2.50	3.50
16 x 20	2.50	3.00	3.00	3.50

Grade "A" Copying

No Air Brush or Retouching	
5 x 7 or smaller, Best Work	\$1.60
8 x 10 Best Work	3.00
11 x 14 Best Work	4.50

(One print included with copy)

Plain copies of Kodak prints can be made at 75c. each, including one print. This, however, must not be confused with our Grade A work.

For Special Work Estimates Will Be Given

Lantern Slides

Slides B. and W. from neg.	\$0.50
Sepia Slides65
Slides and copy neg. from prints	1.00

Special Price in Quantities

Coloring Lantern Slides

A—Grade best detail work ex.	1.00
B—Grade good qual. aver. type65

PROMPT ATTENTION TO MAIL ORDERS

Send for Separate List of Color Work, Miniatures, etc.

We make a specialty of mounting in Albums. We are always ready to offer suggestions—and to quote lowest prices on any kind of special work.

Good Work, Prompt Service, Our Motto