

1895

The Products
Eastman

Photographic Goods

MANUFACTURED BY

EASTMAN KODAK COMPANY.

ROCHESTER, N.Y.

THE BANKERS TRUST CO.,
College Books and Supplies,
179 MAIN STREET.

CATALOGUE.

+ + 1895.



EASTMAN KODAK CO.

ROCHESTER, N. Y., U. S. A.

MANUFACTURERS OF
KODAKS,
KODETS,
BULLET CAMERAS,
EASTMAN'S SOLIO PAPER,
WESTERN COLLODION PAPER,
EASTMAN'S PERMANENT BROMIDE PAPER,
EASTMAN'S PLATINO-BROMIDE PAPER,
EASTMAN'S ENAMELED BROMIDE PAPER,
EASTMAN'S TRANSPARENT FILMS,
EASTMAN'S DRY PLATES,
EASTMAN'S TRANSPARENCY PLATES,
EASTMAN-WALKER ROLL HOLDERS,
VIEW CAMERAS, TRIPODS AND
OTHER SPECIALTIES.

EASTMAN PHOTOGRAPHIC
MATERIALS CO. (LTD.) . . .

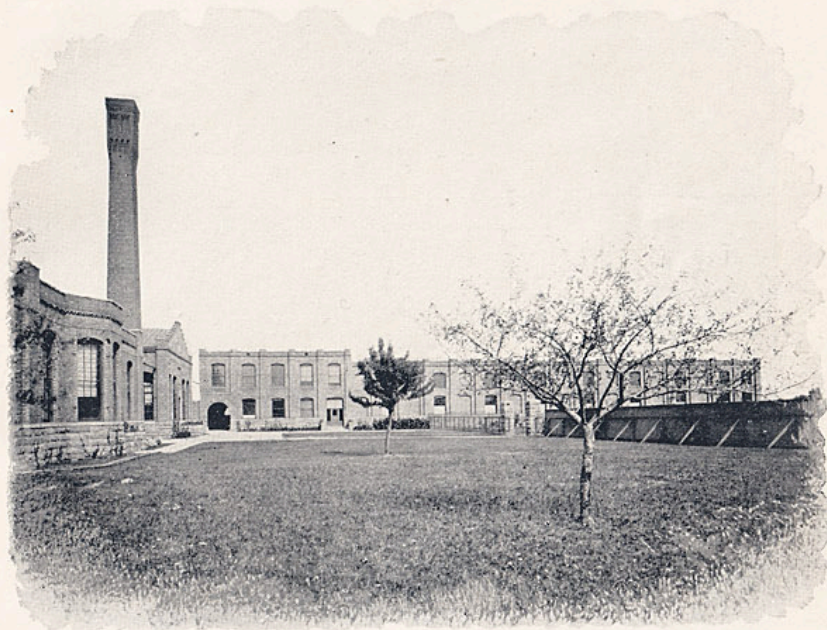
115 OXFORD STREET, LONDON.

4 PLACE VENDOME, PARIS.

FACTORIES: } Rochester, N. Y.
 } Harrow, England.



KODAK PARK.



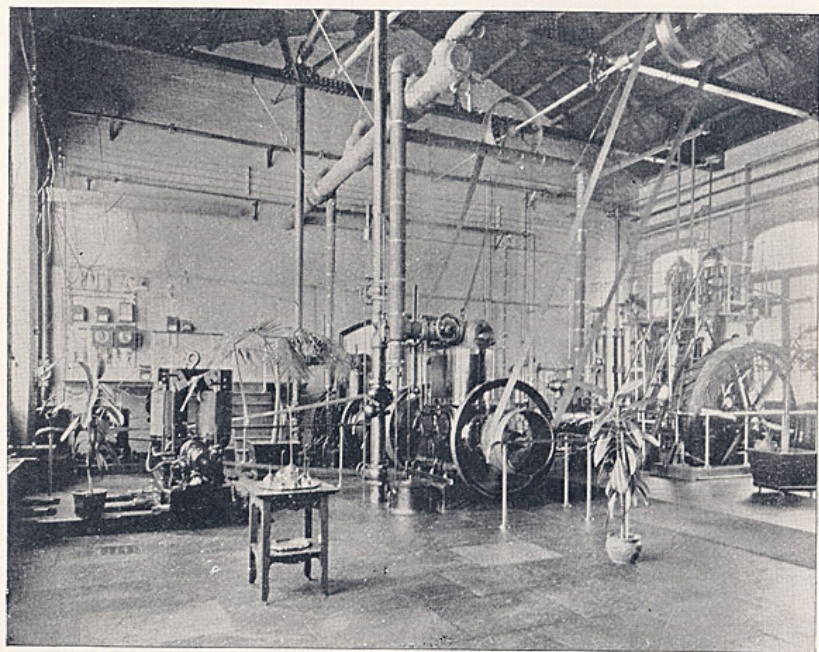
FILM BUILDING.



EXECUTIVE OFFICES.



NEW CAMERA WORKS.



ENGINE ROOM—KODAK PARK.

BY WAY OF PREFACE.

Our facilities for the manufacture of photographic goods are unequaled. The floor space in our Rochester factories is something more than five acres, and the equipment in every department is the best that brains can devise, years of experience suggest and money provide. Kodak Park, where our sensitized products are made, consists of a plot of fourteen acres of land, and contains the largest plant in the world for the manufacture of sensitized photographic goods. The Film Building is 100 x 300 feet, and contains the coating rooms in which the film is made in sheets 41 inches wide and 200 feet long. To the rear of this is the Solio department and a large building for the manufacture of glass dry plates, which has just been completed, and also a special building for the manufacture of Western Collodion paper.

The power house and construction department occupy a building 50 x 200 feet. It is equipped with boilers of more than 400 horse power, duplicate engines and dynamos, which are connected with a score of electric motors in various parts of the works, and also contains a refrigerating machine having a capacity equal to the melting of 50 tons of ice per day, and controlling the temperature in all rooms where sensitive emulsions are handled, keeping them at any desired temperature, even in the hottest weather. Here, also, are the machine and carpenter shops which are equipped with every convenience for the construction or repair of the special machinery required in the manufacture of sensitive goods.

The emulsion building, 70 x 90 feet, is fully equipped for the proper handling of the chemicals in large quantities, and the Experimental Laboratory, 45 x 45 feet, is supplied with every modern appliance for carrying on chemical and mechanical experiments.

Every precaution has been taken to prevent any interruption of the manufacture of goods through fire or other disaster. The buildings are all low and are so constructed as to prevent the spread of fire. There is a well-drilled and equipped

fire department, and a reservoir fed by natural springs, with a capacity of 700,000 gallons, which gives a full supply of water for fire and condenser purposes. With a duplicate Solio plant, duplicate engines, boilers and dynamos it is hard to conceive of any disaster that could interrupt the manufacture of Solio or any of our other products, even for a day.

The Kodak Park plant is devoted to the manufacture of sensitized goods *exclusively*. The Kodaks, Kodets, view cameras, tripods, etc., are manufactured in our State street factory. The building is 60 x 128 feet, six stories high, two-story engine room addition, and has a floor space of about $1\frac{1}{4}$ acres. In the original building, which is connected by an elevated corridor with the camera factory, are the executive offices, shipping rooms, the enlarging department, and it is here that we "Do the rest" after the amateur has "pressed the button." Our developing and printing department contains only skilled workmen, and is the largest in the world, as many as 10,000 prints having been turned out in a single day. As manufacturers of the Kodak, the film, and the Solio paper upon which the prints are made, it is to our interests that only first-class work be turned out. Customers can rest assured that when we "Do the rest,"

the best possible negative will be made from every exposure and the best possible prints from every negative.

In addition to the extensive works in Rochester and at Kodak Park, we have a large plant at Harrow, England, which is the manufacturing point for the Eastman Photographic Materials Co., Ltd., with headquarters in London and a branch office in Paris. The Company has its representatives in all the principal cities of the world, and wherever the photographic art is practised the Eastman products are known. Our goods are photographic staples and dealers everywhere have them in stock.

EASTMAN KODAK COMPANY.

APPARATUS.

Kodaks.

There are some properties that a camera must have if the operator is to thoroughly enjoy its use and accomplish good results. It must be strong, yet light, simple in construction, yet so made as to be easily adapted to the various conditions under which it is to be used. It must have a good lens and a shutter that does not easily get out of order, and above all it should be carefully tested by an expert workman before being put into the hands of the purchaser. The Kodak fulfills these conditions.

The Lens:

Success in picture taking depends most of all upon the lens, and amateurs should therefore be careful not to get inferior lenses when purchasing a camera. Kodaks are fitted with the best lenses, all of the double lenses being strictly rectilinear and very rapid. *They are positively guaranteed to be equal in quality to those of any make.*

The single lenses are the best of their kind and are preferred by many who do not consider a rectilinear lens necessary for ordinary work. The definition of every lens is examined under the microscope by an expert, and no Kodak of either series is sent out with a lens not capable of doing *first-class work*.

Shutters and Roll Holders :

The shutters used on Kodaks are easily regulated and are perfectly adapted to either snap shot work or time exposures, and the roll (or plate) holders are simple and accurate.

Adaptability :

Several kinds of Kodaks are made for use with either plates or films and can be focused either with the index or on the ground glass. Kodaks may be used for hand or tripod work outdoors, time exposures indoors, and flash-lights at night, and the Folding Kodaks are adapted to stereoscopic work.

A Practical Test :

Every Kodak is tested in actual use before being loaded and sealed for shipment. From one to half a

dozen negatives are made with every camera and examined by an expert, and the Kodak is adjusted until every part works in harmony with every other part. No matter how excellent in themselves each of the parts of a camera may be, a slight error in adjustment when the camera is put together often prevents the instrument from making the best pictures of which it is capable. Our system of tests insures a camera that is ready for instant use and will give perfect satisfaction to the operator.

Size and Weight :

The Kodak is the smallest of all the hand cameras. A No. 4 Jr. Kodak measures 326 cubic inches, and weighs, loaded for 100 pictures 4 x 5, only $3\frac{3}{4}$ lbs. A glass plate magazine camera measures over 500 cubic inches and weighs 9 lbs., loaded for 24 exposures. Six dozen extra plates weigh $10\frac{1}{2}$ lbs. more. In short, a magazine camera and 100 plates weigh five times as much as a No. 4 Jr. Kodak of equal capacity. The No. 4 Regular Kodak is ordinarily used with a roll of 100 films but it conveniently carries a roll of 250, the weight then being $5\frac{1}{2}$ lbs. A magazine camera and an equivalent in glass plates weighs 42 lbs., or nearly eight times as much. It is obvious

that where lightness and compactness are of any consequence, the magazine camera is not to be compared with the Kodak.

“ We Do the Rest : ”

Many of those who join the ranks of amateur photographers have not the time or inclination to do the developing and printing—the drudgery of picture making. The artistic work, the arranging of a group, the posing of a figure, may be a source of pleasure to them, but beyond that they do not care to go. To such we say : *You press the button, we do the rest.*

You Can Do the Rest :

Many amateurs enjoy work in the dark room, and find as much pleasure in the *making* as in the *taking* of photographs. To such, the Kodak presents every advantage offered by any camera. Films are quite as easy to handle in the developer as plates and are far less liable to injury.

Transparent Film :

The advantages of a light, transparent roll film over glass plates for outdoor work is obvious. In

quality film is fully equal to the best brands of plates on the market—some of our customers say that it is better—and it is very rapid.

If you have not yet been converted to films, at least buy a Kodak that can be used with either plates or films. Do not invest your money in a camera that can be used with plates only and will soon become obsolete.

The Choice of a Kodak :

“ Which Kodak shall I buy ? ” is a question that is very frequently asked us. The answer depends entirely upon the use to which the Kodak is to be put. If you are expecting to travel and do not wish to be troubled with changing films while on your journey, a No. 2, No. 3, or No. 4 Regular will prove most satisfactory. The No. 2 reduces the work of picture taking to a minimum. It requires no focusing, and as it makes a round picture, the necessity of holding the Kodak exactly square with the object to be photographed is done away with. The No. 3 and No. 4 Kodaks are the most easily operated and have the largest capacity of any cameras making rectangular pictures. They are alike in every way except in size.

If you wish to do your own developing and printing and think that you may want to use glass plates occasionally, and if greater compactness is some object, we recommend the No. 3 and No. 4 Jr.

Either the No. 3 Regular or No. 3 Jr. is very convenient for those who expect to make lantern slides, as the negatives are the proper size for making slides by contact.

If you expect to do a great deal of tripod work (all Kodaks can be used on a tripod), you will find the new Folding Kodaks particularly adapted to your wants. They have every feature which the most advanced amateurs desire, and combine all the advantages of a complete view camera with the compactness of a Kodak.

If you wish to spend but a small amount for a camera at present, buy an A, B or C "Daylight" or "Ordinary" Kodak. These instruments are capable of making good pictures and have a capacity of 24 exposures without reloading. The "daylight" feature is a great convenience to travelers, as the Kodak can be *loaded in daylight*, a feature which those amateurs who have hunted in vain for a dark room in some strange city will appreciate.

If you are still undecided as to what Kodak will best suit you or are afraid that you cannot make

pictures successfully, buy an A or B Ordinary. The pleasure that you will get from the first roll of film will repay you for the small investment, and if you are then ambitious to own a more elaborate outfit, your experience will tell you which Kodak is best adapted to your use.

In case you prefer a camera for glass plates and do not feel like buying a fifty or sixty dollar instrument, like the Junior or Folding Kodak, get either a Regular or Folding style Kodak, and you can then add a roll holder to your outfit at any time.

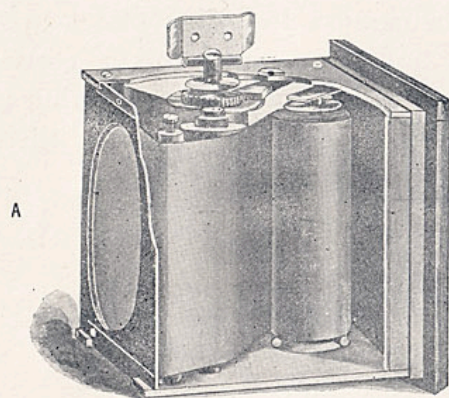


FIG. 1.—THE KODAK ROLL HOLDER.

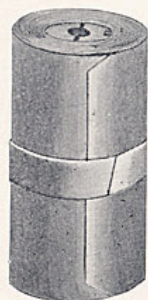


FIG. 2.—SPOOL OF FILM.

Operation of the Kodak.

In the Kodak, the exposures, instead of being made on separate pieces of sensitive material like glass plates, as in other cameras, are made on a strip of transparent film, which is wound from one roller to another by means of a key.

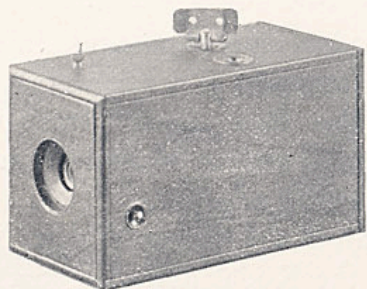
Figure 1 shows the roll holder of No. 2 Kodak, removed from the Kodak and with part of the top cut away.

The image from the lens falls on the film at A. When the exposure has been made the key is turned and a new section of film brought into position for another picture. A simple device indicates when enough film has been turned and another counts the number of exposures made, thus enabling the user to always know how many pictures he has taken and how many exposures he has left.

Figure 2 shows the spool of film. A spool for 100 exposures weighs only a few ounces and a roll can be taken out of the Kodak and replaced with a fresh one in a few minutes. The film is unbreakable and can be sent by mail to and from the factory.

The body of the film is similar to celluloid; it is as transparent as glass and as pliable as paper.

An elaborately illustrated manual accompanies each Kodak, by the aid of which anybody can learn all or any part of the operations necessary to make the very best photographs.



No. 1 Kodak:

For round pictures. $2\frac{1}{2}$ inches in diameter; capacity, 150 exposures without reloading; size, $3\frac{1}{4} \times 3\frac{3}{4} \times 6$ inches, or 73 cubic inches; weight loaded, 1 lb. 8 oz.

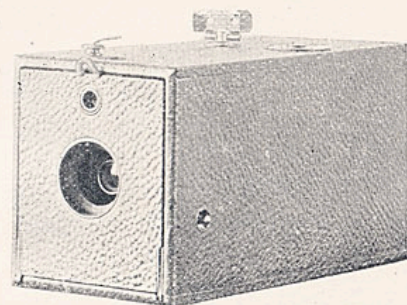
Equivalent focus of lens, $2\frac{3}{4}$ in.; working angle, 60° .

This is the original Kodak and it will always continue to be the *Note Book of Photography*. It is the most compact camera in existence, being hardly larger than an ordinary field glass. It makes a picture plenty large enough for most purposes, and one that can readily be enlarged to any size. The cost of each picture including the film, is only 10 cents—a most important feature to those who desire to photograph everything that interests them. A collection of these pictures may be made to furnish a *pictorial history of life as it is lived* by the owner that will grow more valuable every day that passes.

Price of No. 1 Kodak, loaded with 100 exposures, including sole leather case, - - - - - \$25 00

NOTE.—The price includes spool of 100 exposures only, but the camera is capable of receiving a spool of 150 exposures.

Reloading, developing and printing 100 pictures, - - - - - 10 00
 $2\frac{3}{4}$ inch spool of 100 exposures New Transparent film, - - - - - 2 50



No. 2 Kodak:

For round pictures, $3\frac{1}{2}$ inches diameter; capacity 150 exposures without reloading; size, $4\frac{1}{2} \times 5 \times 9$ inches, or 202 cubic inches; weight loaded, 2 lbs. 12 oz.

Equivalent focus of lens, $3\frac{1}{4}$ in.; working angle, 56° .

This Kodak is provided with a finder, a counter for exposures and a set of three stops for the lens. The lens has wonderful depth and definition, and is guaranteed to do work equal to that of any lens known.

The largest stop is used for instantaneous street work, the middle stop for interiors, and the smallest for timed exposures out of doors.

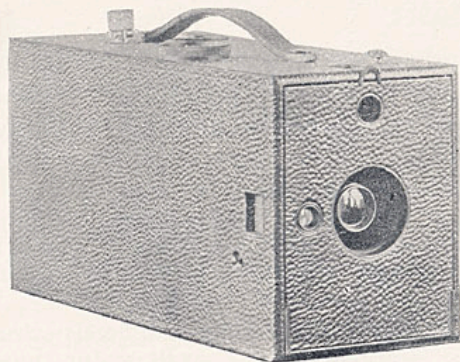
Negatives from this camera make a very pretty lantern slide when masked down to $2\frac{3}{4}$ inches in diameter.

The advantage of this camera is that it requires no focusing and as the picture is round it requires no care to hold the camera square with the object.

Price No. 2 Kodak, loaded with 60 exposures, including sole leather carrying case, - - - - - \$32 50

NOTE.—The price includes spool of 60 exposures, but the camera will take a spool of 150 exposures.

Reloading, developing and printing 60 finished pictures, - - - - - 10 00
 $3\frac{3}{4}$ inch spool for 60 exposures $3\frac{1}{2}$ inches diameter, New Transparent Film, - - - - - 2 50
 Spool for 100 exposures, - - - - - 4 25



NO. 3 KODAK.

No. 3 Kodak:

For rectangular pictures $3\frac{1}{4} \times 4\frac{1}{4}$; capacity, 250 exposures without reloading; size, $4\frac{1}{4} \times 5\frac{1}{2} \times 11\frac{1}{2} = 268\frac{1}{2}$ cubic inches; weight loaded, 4 pounds.

Equivalent focus of lens, $5\frac{5}{8}$ in.; working angle, 42° . (If measured on the diagonal, is 47° .)

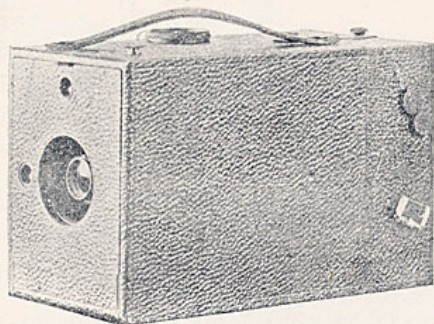
The No. 3 Kodak is provided with two finders, one for horizontal and one for vertical pictures, Bausch & Lomb Universal Lens, an instantaneous shutter, having rotating stops and adjustable speed, rack and pinion for focusing, two sockets for tripod screws when used for vertical or horizontal time exposures, and a counter for exposures.

The No. 3 Kodak is the favorite with those who make negatives with a special view to using them for lantern slide printing.

Price of No. 3 Kodak, loaded with 60 exposures, including sole leather carrying case, - - - - - \$40 00

NOTE.—The price includes spool of 60 exposures only; but the camera is capable of receiving spool of 250 exposures.

Reloading, developing and printing 60 finished pictures, - -	10 00
$4\frac{1}{4}$ inch spool for 60 exposures $4\frac{1}{4} \times 3\frac{1}{4}$, Transparent Film, - -	2 50
Spool for 100 exposures, - - - - -	4 25



NO. 3 KODAK JUNIOR.

No. 3 Kodak Junior:

For rectangular pictures $3\frac{1}{4} \times 4\frac{1}{4}$; capacity, 100 exposures without reloading; size $4\frac{1}{4} \times 5\frac{1}{2} \times 9 = 210$ cubic inches. Weight loaded, 3 pounds.

Equivalent focus of lens, $5\frac{5}{8}$ in.; working angle 42° . (If measured on the diagonal the angle is 47° .)

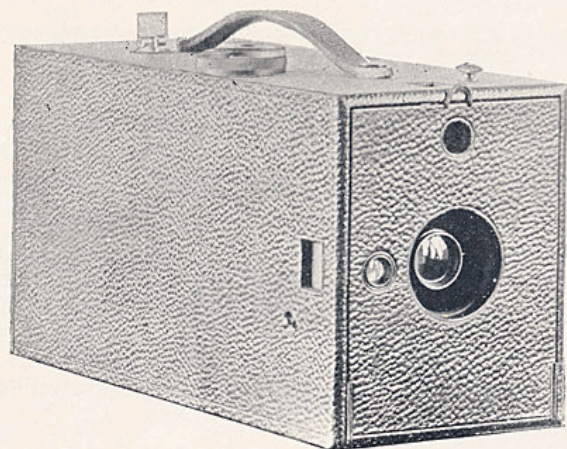
This camera is substantially the same as No. 3, except that it has a capacity of *100 exposures only*, and is $2\frac{1}{2}$ inches shorter, a more compact camera for those who want the smallest possible camera that will make a $3\frac{1}{4} \times 4\frac{1}{4}$ picture. The No. 3 Junior takes a $3\frac{1}{4}$ inch spool, making the negative the other way of the film from the No 3, which takes a $4\frac{1}{4}$ inch spool.

This camera can be fitted with ground glass attachment for glass plates. See p. 32.

Price, No. 3 Kodak Junior, loaded with 60 exposures, including sole leather carrying case, - - - - \$40 00

NOTE.—This price includes roll of 60 exposures only; but the camera is capable of receiving a spool of 100 exposures.

Reloading, developing and printing 60 finished pictures, - 10 00
 $3\frac{1}{4}$ inch spool for 60 exposures $3\frac{1}{4} \times 4\frac{1}{4}$, Transparent Film, - 2 50



NO. 4 KODAK.

No. 4 Kodak :

For 4 x 5 rectangular pictures ; capacity, 250 pictures without reloading ; size, $5 \times 6\frac{3}{8} \times 12\frac{3}{4} = 406$ cubic inches ; weight loaded, $4\frac{1}{2}$ pounds.

Equivalent focus of lens, $6\frac{1}{2}$ in.; working angle, 42° . (If measured on the diagonal the angle is 50° .)

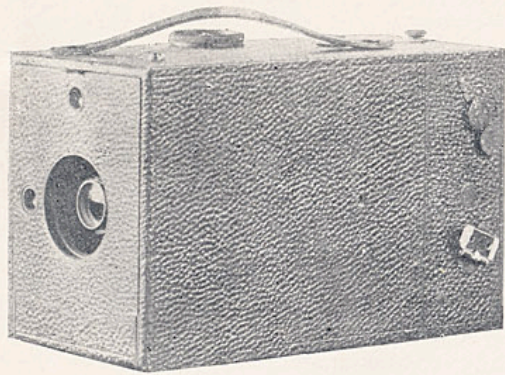
The No. 4 Kodak has two finders, one for vertical and one for horizontal pictures. Bausch & Lomb Universal Lens ; an instantaneous shutter, having rotating stops and adjustable speed ; rack and pinion for focusing ; two sockets for tripod screws when used for vertical or horizontal timed exposures, and a counter for exposures.

The No. 4 Kodak takes 250 pictures 4 x 5 inches without reloading, and it is much smaller than cameras by other makers for making single negatives.

Price of No. 4 Kodak loaded with 48 exposures, including sole leather carrying case, - - - - - \$50 00

NOTE.—This price includes spool of 48 exposures only ; but the camera is capable of receiving a spool of 250 exposures.

Reloading, developing and printing 48 finished pictures, - 10 00
 5 inch spool for 48 exposures 5 x 4, New Transparent Film, - 3 00
 Spool for 100 exposures, - - - - - 6 25



NO. 4 KODAK JR.

No. 4 Kodak Junior:

For rectangular pictures, 4 x 5; capacity, 100 exposures without reloading; size, 5 x 6 $\frac{1}{4}$ x 10 $\frac{1}{2}$ = 326 cubic inches; weight loaded, 3 $\frac{1}{2}$ pounds.

Equivalent focus of lens, 6 $\frac{1}{4}$ in.; working angle, 42°. (If measured on the diagonal, the angle is 50°.)

This camera is substantially the same as the No. 4, except that it has a capacity for 100 exposures only, and is 2 $\frac{1}{4}$ inches shorter, making a more compact camera for those who want the smallest possible camera that will make a 4 x 5 picture.

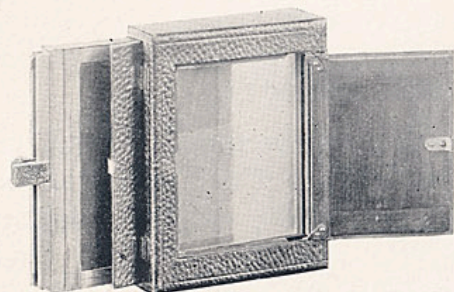
This camera can be fitted with ground glass attachments for glass plates. (See p. 32.)

The No. 4 Junior takes a 4 inch spool and makes the negative the other way of the film from the No. 4, which takes a 5 inch spool.

Price of No. 4 Kodak Junior loaded with 48 exposures, including sole leather carrying case, - - - - - \$50 00

NOTE.—The price includes spool of 48 exposures only, but the camera is capable of receiving a spool of 100 exposures.

Reloading, developing and printing 48 finished pictures, - 10 00
4 inch spool for 48 exposures 4 x 5, New Transparent Film, - 3 00



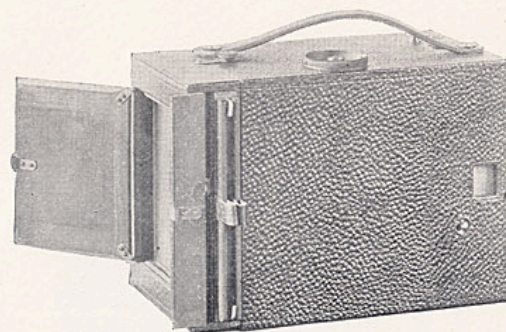
A Glass Plate Attachment

Has been devised for the Junior Kodaks which is interchangeable with the roll holder, thus permitting either glass plates or roll films to be used. (See price list, p. 33.)

The engraving on page 33 shows the attachment on the camera. It is held in place by the same catch that holds the roll holder and can be detached in an instant.

A door in the back allows the image on the ground glass to be focused and a door in the side admits the double plate holder. The attachment has none of the trappy devices common to most glass plate attachments, and when used either for plates or films the camera is as compact and perfect an instrument as if intended for use only in one way.

All new Junior Kodaks are constructed to take the glass plate attachment without alteration. Old Kodaks can be altered at a cost of \$2.00.



Glass Plate Kodaks

without roll holder for films.

No. 3 Junior with 3 double holders,	\$40 00
No. 4 Junior with 3 double holders,	50 00

The above Kodaks are the most compact, complete and best made glass plate cameras in the market.

Price of Glass Plate Attachments for Nos. 3 Jr. or 4 Jr. Kodaks.

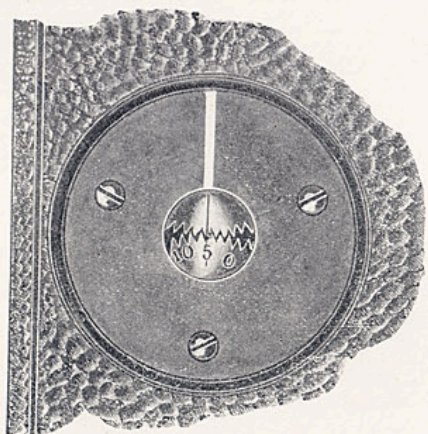
Adapter,	\$5 00
Double holders, each,	1 00

\$10.00 Outfit.

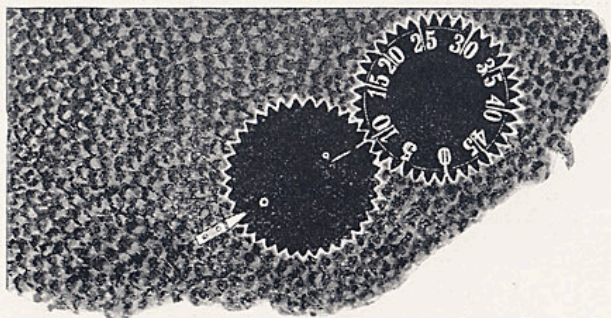
Adapter,	\$5 00
3 Double Holders,	3 00
Leather Carrying Case,	2 00

Leather Cases.

To hold 6 Double Holders and Adapter,	\$2 50
" 3 " " " " "	2 00
" 6 " " " only,	1 50
" 3 " " " "	1 00



COUNTER FOR REGULAR KODAKS.



COUNTER FOR FOLDING AND JUNIOR KODAKS.

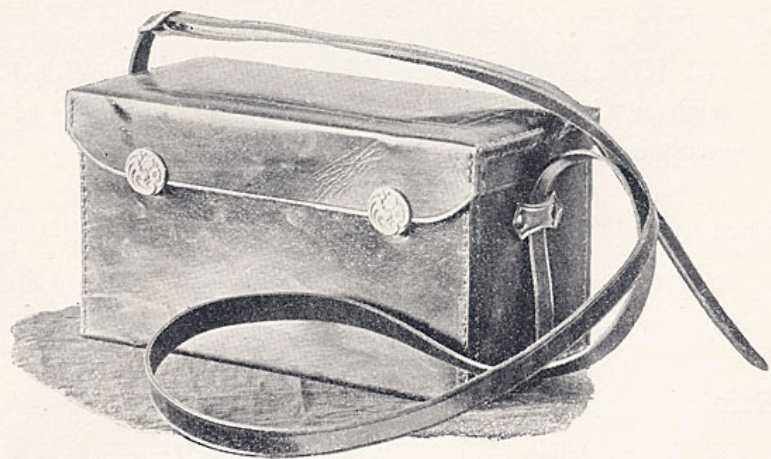
Counters for Kodaks:

All Kodaks except the No. 1 are now provided with a Counter for registering the number of exposures made, without extra charge.

When applied to old Kodaks the charge is \$2.00 each.

Safety Catch for Time Exposures:

A New Device for setting the shutters of the Regular and Junior Kodaks for time exposures, makes the action positive and simple. It requires no guess work, no listening for a click of the shutter to tell when to stop drawing the cord. A catch is pressed into engagement with the shutter *while the front is open* and the shutter in plain sight. The front is then closed and a pressure of the button opens the lens. Exposures can then be made with the cap.



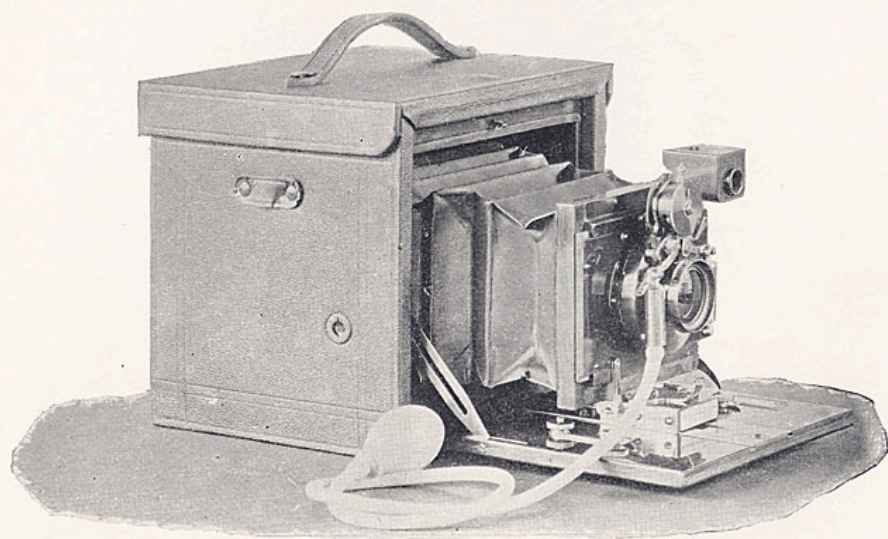
The Carrying Cases

For all the foregoing Kodaks are made from the best sole leather and are hand sewed.

The cases are not disfigured by any openings for fittings, and when closed are inconspicuous.

They are neat, elegant and substantial.

The Folding Kodaks.



IMPROVED NO. 4 FOLDING KODAK.

Improved No. 4 Folding Kodak :

For rectangular pictures, 4 x 5 inches ; capacity, 100 exposures without reloading ; size (folded) $7\frac{1}{2} \times 7\frac{3}{4} \times 6\frac{5}{8}$ inches = 386 cubic inches. Weight loaded, 6 lbs, 4 ozs.

This is the most complete folding camera ever devised and combines all the desirable features of a complete view camera with the compactness of a Kodak. It is self-contained when closed and can be used for either hand or tripod work.

Shutters. It is fitted with the Bausch & Lomb Iris Diaphragm Shutter, which is furnished with pneumatic release, including rubber tube and bulb, without additional charge. The range of automatic exposure is from $\frac{1}{100}$ of a second to three seconds. Hand exposures are made by pressing the bulb to open and again pressing to close the shutter. The diaphragm is regulated by simply turning a dial. The shutter can be used with or without bulb.

The Lens is longer focus than formerly and covers the plate fully, even when the front is raised ; it is instantly removable and can be replaced by a wide angle lens, the cells of which fit into the same shutter. A convenient pocket is provided within the box for carrying extra lenses.

A *Double Swing Back* and sliding front are among the other improvements. These Kodaks can be focused either with the index or on the ground glass. The roll holder has a dark slide and is interchangeable with our plate holders. A hinge in the bed allows the front to drop when the wide angle lens is in use.

A convenient locking device prevents the front of the Kodak from being opened and tampered with.

Folding Kodaks are self-contained when closed and are provided with a Bausch & Lomb Universal Lens, reversible finder, socket for tripod screw, counter for exposures, and ground glass for focusing.

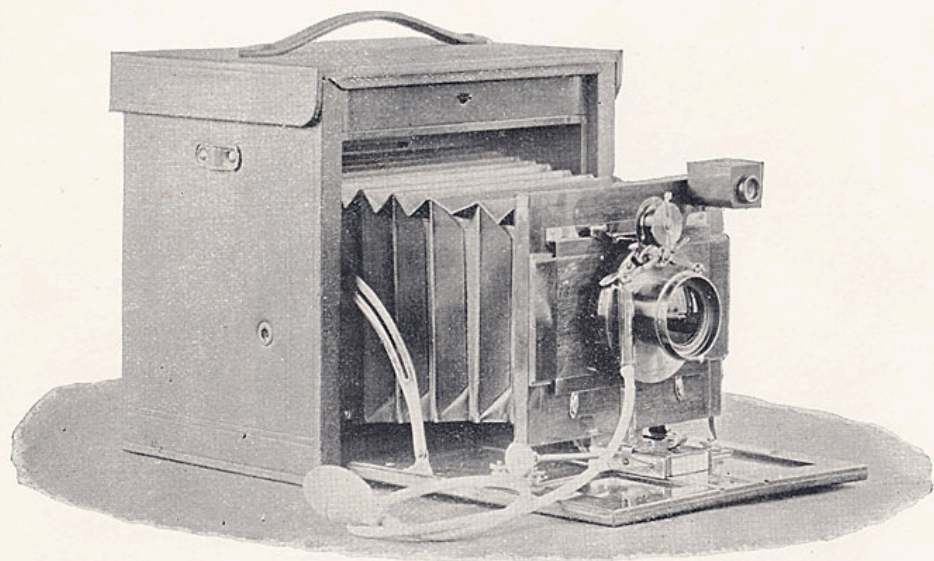
Price No. 4 Folding Kodak, complete with shoulder strap,
loaded with spool for 48 exposures, - - - - - \$60 00

NOTE.—The price includes spool of 48 exposures only, but the camera is capable of receiving spools for 100 exposures.

Reloading, developing and printing 48 finished pictures, - 10 00
Wide Angle Lens (extra), - - - - - 10 00
4 inch spool for 48 exposures, New Transparent Film, - 3 00



NO. 4 FOLDING KODAK, CLOSED.



IMPROVED NO. 5 FOLDING KODAK.

Improved No. 5 Folding Kodak:

For rectangular pictures, 5 x 7 inches; capacity, 100 exposures without reloading; size (folded), $10\frac{1}{8} \times 9\frac{1}{4} \times 7\frac{1}{2}$ inches = 703 cubic inches. Weight, loaded, 9 lbs. 5 oz.

This is the most complete folding camera ever devised, and combines all of the desirable features of a complete view camera with the compactness of a Kodak. It is self contained when closed and can be used for either hand or tripod work.

Shutter. It is fitted with the Bausch & Lomb Iris Diaphragm Shutter, which is furnished with pneumatic release, including rubber tube and bulb without additional charge. The range of automatic exposure is from $\frac{1}{100}$ of a second to three seconds. Hand exposures are made by pressing the bulb to open and again pressing it to close the shutter. The diaphragm is regulated by simply turning a dial. The shutter can be used with or without the bulb.

The Lens is longer focus than formerly and covers the plate fully, even when the front is raised; it is instantly removable and can be replaced by a wide angle lens, the cells of which fit into the same shutter. The lens board can be easily removed and stereoscopic lenses substituted. An extra lens board and

partition, for use with stereoscopic lenses, are furnished with each Kodak without additional charge. A convenient pocket is provided within the box for carrying extra lenses.

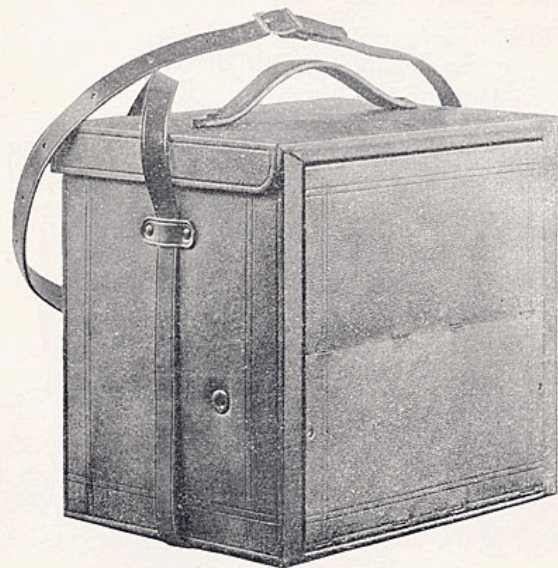
A Double Swing Back and sliding front are among the other improvements. These Kodaks can be focussed either with the index or on the ground glass. The roll holder has a dark slide and is interchangeable with our plate holders. A hinge in the bed allows the front to drop when the wide angle lens is in use. The No. 5 Folding is also provided with rack and pinion for fine focussing, and a convenient locking device prevents the front of the Kodak from being opened and tampered with.

Folding Kodaks are self contained when closed and are provided with a Bausch and Lomb universal lens, reversible finder, two sockets for tripod screw, counter for exposures, and ground glass for focusing.

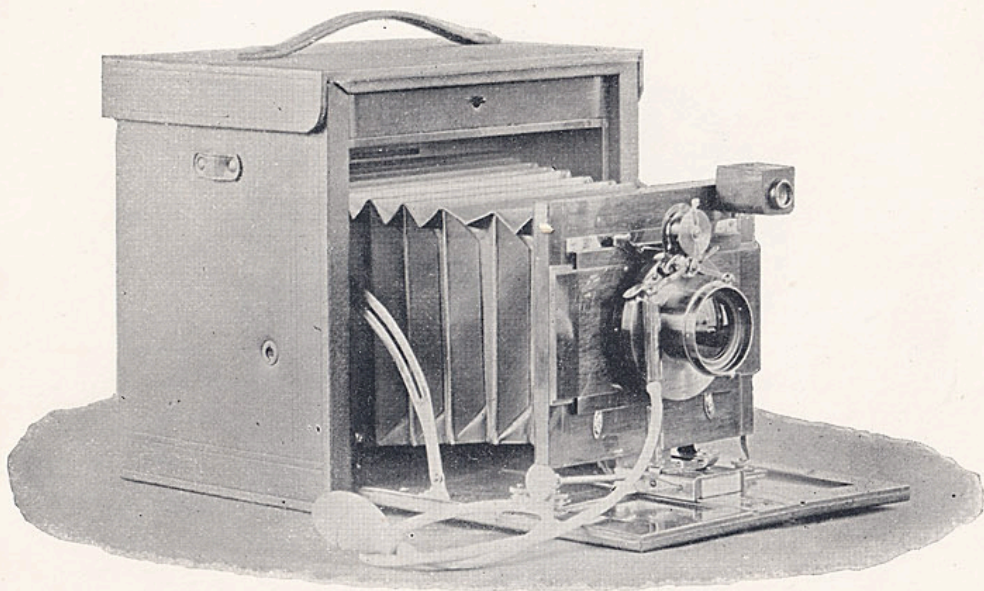
Price, complete with shoulder strap, loaded with spool of 32 exposures, - - - - - \$75 00

NOTE.—The price includes a spool of 32 exposures only, but the camera is capable of receiving a roll of 100 exposures.

Reloading, developing and printing 32 finished pictures, - -	10 00
Wide Angle Lens (extra), - - - - -	15 00
Stereoscopic Lenses (extra), - - - - -	14 00
Stereoscopic Shutters (extra), - - - - -	18 50
5 in. Spool for 54 exposures New Transparent Film, - -	6 00
5 " " " 32 " " " " - -	4 00



NO. 5 FOLDING KODAK, CLOSED.



IMPROVED NO. 6 FOLDING KODAK.

Improved No. 6 Folding Kodak.

For rectangular pictures, $6\frac{1}{2}$ x $8\frac{1}{2}$ inches; capacity, 48 exposures without reloading; size (folded), 12 x $11\frac{1}{2}$ x $8\frac{3}{4}$ inches = 1208 cubic inches. Weight, loaded, 11 lbs. 11 ozs.

This Kodak is exactly the same as the Improved No. 5 Folding described on two preceding pages, except in size.

Price, complete with shoulder strap, loaded with spool of 24 exposures, - - - - - \$100 00

NOTE.—The price includes spool of 24 exposures only, but the camera will take a spool of 48 exposures.

Reloading, developing and printing 24 finished pictures,	-	10 00
Wide Angle Lens (extra),	- - - - -	20 00
Stereoscopic Lenses (extra),	-	14 00
Stereoscopic Shutter (extra),	- - - - -	18 50
$6\frac{1}{2}$ inch spool for 48 exposures, New Transparent Film,	-	8 00
$6\frac{1}{2}$ " " " 24 " " " " "	-	4 00

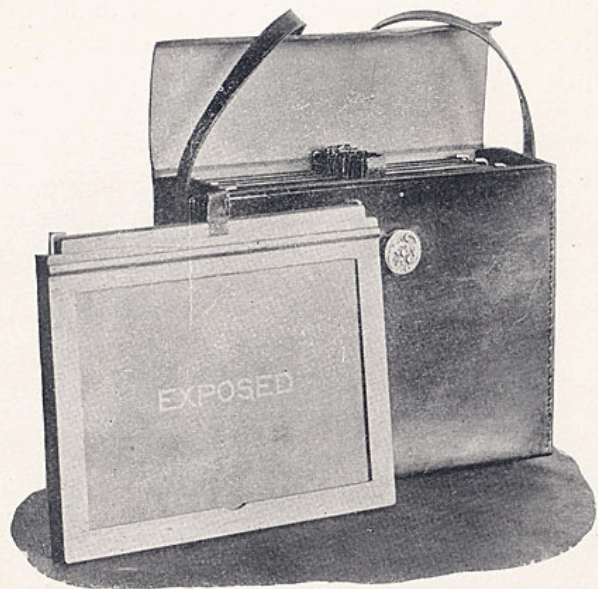


PLATE HOLDERS AND CASE.

For Use with Glass Plates :

Glass plates can be used in the New Folding Kodaks without an adapter, as the roll holder is interchangeable with our plate holders. Four double holders can be carried in the case in the space occupied by the roll holder.

Prices of Holders and Cases.

	No. 4.	No. 5.	No. 6.
Double Plate Holders, each, - - -	\$1 00	\$1 25	\$1 60
Leather carrying cases for 4 holders, - - -	1 50	2 00	2 75

All Folding Kodaks issued after this date will take glass plates without any extra attachment, and will have a slide in the roll holder so that it may be removed in daylight.

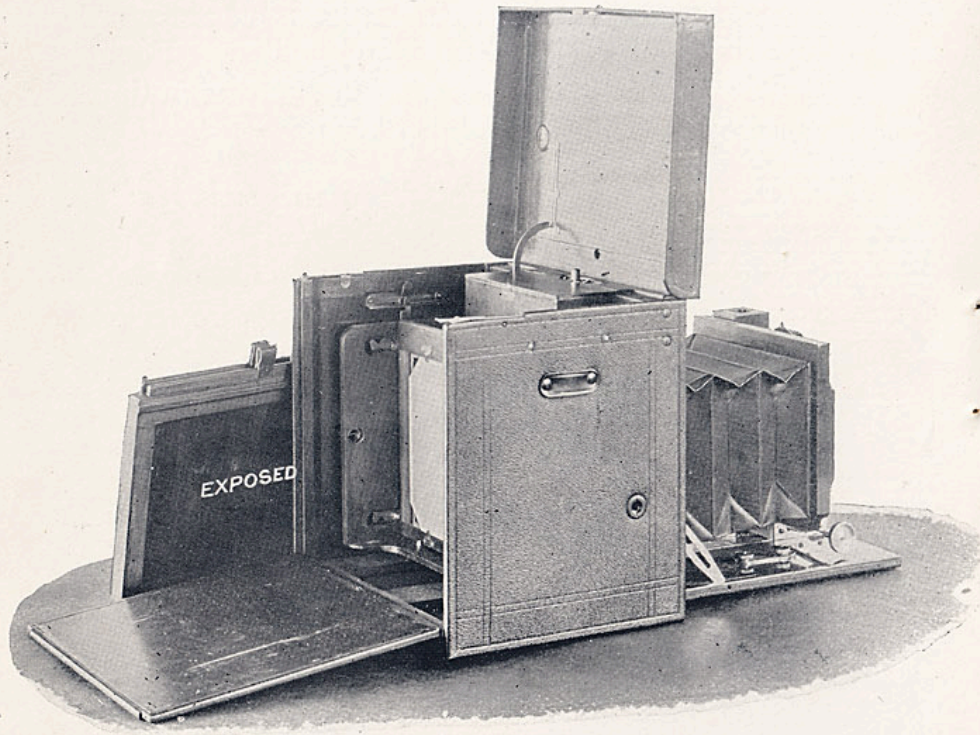
Folding Kodaks of the 1892 Model can be supplied with Glass Plate Attachments as follows :

	No. 4.	No. 5.
Adapters, - - - - -	\$2 50	\$3 00
Double Plate Holders, - - - - -	1 00	1 25
Leather Case for 3 Holders and Adapter or four holders without Adapter, - - - - -	1 50	2 00

Old Style Folding Kodaks can be Altered as Follows :

No. 5, to take Glass Plate Attachment, - - - - -	\$12 00
No. 5, do., with Slide in Roll Holder, - - - - -	15 00
No. 4. to take Glass Plate Attachment, - - - - -	10 00
No. 4, do., with Slide in Roll Holder, - - - - -	12 50

Above prices include in each case the attachment with ground glass and one double plate holder.



FOLDING KODAK FOR GLASS PLATES.

Glass Plate Folding Kodaks

Without roll holder or plate holders are supplied as follows :

No. 4 (4 x 5)	- - - -	\$50 00
No. 5 (5 x 7)	- - - -	62 50
No. 6 (6½ x 8½)	- - - -	84 00

Four Double Plate Holders can be carried in the case in the space occupied by the roll holder.

Prices of Plate Holders and Carrying Cases.

	No. 4.	No. 5.	No. 6.
Double Plate Holders, each.	\$1 00	\$1 25	\$1 60
Carrying Case for four double Holders,	1 50	2 00	2 75

Roll holders can be supplied to fit these cameras subsequently if required.

Roll Holder for No. 4, not loaded,	- - - -	\$10 00
Roll Holder for No. 5, not loaded,	- - - -	12 50
Roll Holder for No. 6, not loaded,	- - - -	16 00

Lenses :

The Lenses furnished with the Kodaks are strictly rectilinear and very rapid. *They are positively equal in quality to those of any make.*

Lenses of other makes cannot be substituted.

Note These Facts:

The Kodak has a take-up tension for the film which keeps it flat and in focus all the time. The film is held firmly at each end and its movement is positive and certain. It does not permit the film to run sidewise so as to catch and tear.

Nothing bears on the surface of the sensitive film in any Kodak roll holder. It is rolled from spool to reel entirely unobstructed and cannot be injured.

Workmanship:

The Foregoing Kodak cameras of all sizes and styles are covered with fine black morocco leather. The fittings are all carefully finished and the closest attention is paid to the minutest details of manufacture, with a view to maintaining the present reputation of the Eastman Kodak Company for turning out work of the highest class.

A B C Kodaks.

Wishing to bring the Kodak within the reach of those who do not care to invest in a camera of the most expensive kind, the manufacturers have applied the Kodak principle to cameras of more simple construction, such as described in the following pages:

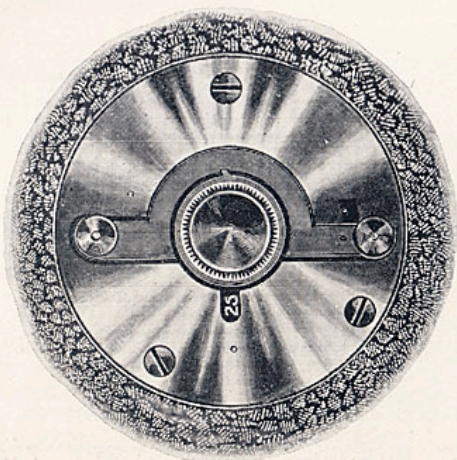
The prices put upon these cameras should not lead to the inference that they are "*cheap*" in any sense except that they are marvelously good instruments for the money.

New Features:

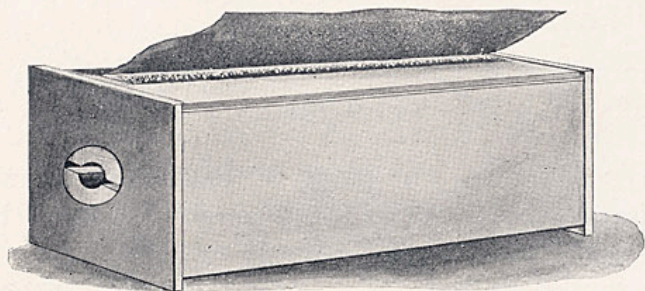
Several new features introduced with the A B C Kodaks are worthy of attention.

The Counter or register of exposures shows at all times the number of exposures that have been made and the number remaining on the spool.

The Automatic Lock prevents turning too much or too little film into position.



COUNTER AND AUTOMATIC LOCK.



SPOOL FOR DAYLIGHT KODAK, SHOWING BLACK CLOTH PROTRUDING FROM SLOT IN BOX.

The Daylight Feature:

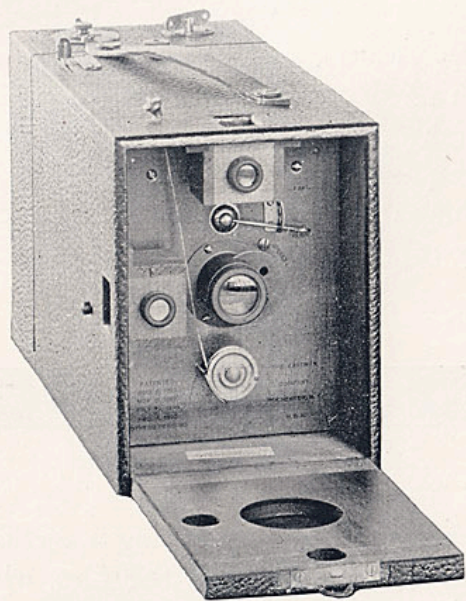
The discovery of a method which does away with the necessity of a dark room in reloading cameras, in itself marks a new era in photography. The possessor of a "daylight" Kodak is entirely free, when traveling, from the annoyance of having to look up a dark room in which to reload his camera. He can do it in an ordinary room by daylight or lamplight.



FILM FOR DAYLIGHT KODAK.

This is accomplished by having a section of black cloth fastened to each end of the film, which covers the film while loading and unloading. As soon as the fresh spool is inserted, three turns of the key winds the black cloth out of the way and brings the sensitive film into position to take the picture.

The Safety Shutter is easily set for time or instantaneous exposures and requires no cap for time exposures.



THE ABOVE CUT SHOWS THE FRONT OF THE C DAYLIGHT KODAK OPEN.

Workmanship:

The workmanship of the A B C Kodaks is first-class in every particular. Every camera is tested in actual use and is perfect.

Operation:

The movements necessary to take a picture with the A B C Kodaks have been reduced to *four*.

1st. Push the lever.

This releases the film and counts the previous exposure.

2nd. Turn the key.

This rolls into position a fresh section of the sensitive film. The key is turned until it locks automatically. The film is perforated with a knife by the locking mechanism so that the exposures can be cut apart.

3rd. Pull the cord. This sets the shutter.

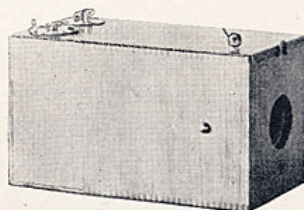
4th. Press the button. This makes the exposure.

The above operations have only to be repeated each time to make *24 pictures without reloading*.

Any number of exposures can be made and cut off from the roll of film without interfering with the balance of the roll.

Glass Plate Attachment:

The C Kodaks can be fitted with a glass plate attachment which permits the use of glass plates. A ground glass permits of focusing the image in the usual manner and the plate holders furnished with the attachment are neat and compact.



A Ordinary Kodak:

For rectangular pictures, $2\frac{3}{4} \times 3\frac{1}{4}$ inches; capacity, 24 exposures without reloading. Size of camera, $3\frac{1}{2} \times 4 \times 7\frac{1}{4}$ inches; weight, 17 ounces. Length of focus of lens, 4 inches. Handsomely finished in natural wood.

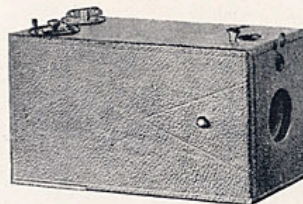
The A Kodak is very little larger than the original No. 1 Kodak, but it takes a much larger picture, and on account of the lens being much longer focus there is none of the distorted perspective produced by the shorter lens.

The A Kodak is emphatically the

YOUNG PEOPLE'S KODAK.

With the help of the illustrated manual accompanying the Kodak, any boy or girl, 10 years old or over, can readily learn to make the finest photographs.

	Price.
A Ordinary Kodak, loaded for 24 exposures, - - - -	\$6 00
Complete outfit for developing, printing and finishing the pictures, 1 50	



A Daylight Kodak:

For rectangular pictures, $2\frac{3}{4} \times 3\frac{1}{4}$ inches; capacity, 24 exposures without reloading. Size of camera, $3\frac{1}{2} \times 4 \times 7\frac{1}{4}$ inches. Weight, 17 ounces; length of focus of lens, 4 inches. Handsomely finished and covered with leather.

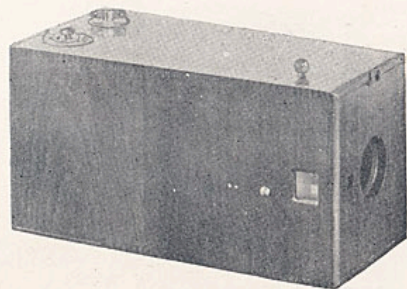
Travelers or tourists who want the smallest camera that will make a good picture will find that this camera offers advantages never embodied in any other. The lens is always in focus. A finder enables the image to be located with accuracy.

The pictures made with this camera can be enlarged to any size on Eastman's Permanent Bromide Paper.

This Kodak can be

LOADED IN DAYLIGHT.

	Price.
A Daylight Kodak loaded for 24 exposures, - - - -	\$8 50
Complete outfit for developing, printing and finishing the pictures, 1 50	



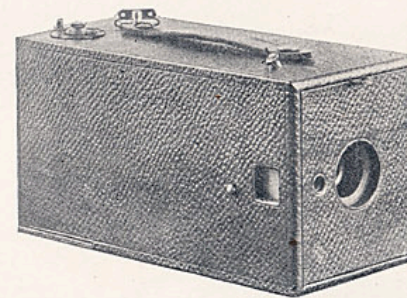
B Ordinary Kodak:

For rectangular pictures, $3\frac{1}{2} \times 4$ inches; capacity, 24 exposures without reloading. Size of camera $4\frac{1}{2} \times 4\frac{3}{4} \times 9\frac{1}{2}$ inches. Weight, 1 pound 13 ounces; length of focus of lens, 6 inches. Handsomely finished in natural wood.

The B Ordinary Kodak has a finder for locating the image, and revolving stops in the lens, which is of the universal focus type.

This camera makes a medium size picture and is especially designed for young people who want a larger picture than that made by the A Kodak.

	Price,
B Ordinary Kodak, loaded for 24 exposures, - - - -	\$10 00
Complete outfit for developing, printing and finishing the pictures, 1 50	



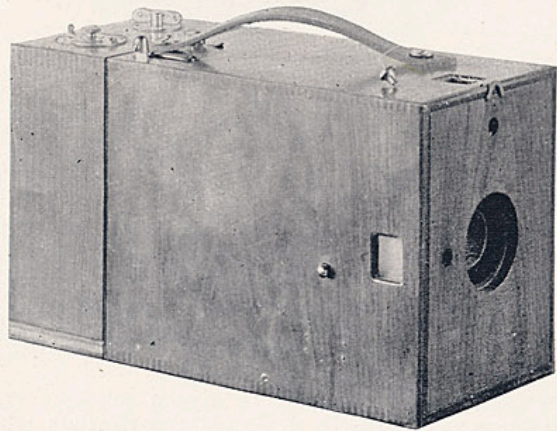
B Daylight Kodak:

For rectangular pictures, $3\frac{1}{2} \times 4$ inches; capacity, 24 exposures without reloading. Size of camera, $4\frac{1}{2} \times 4\frac{3}{4} \times 9\frac{1}{2}$ inches; weight, 1 lb. 13 oz.; length of focus of lens, 6 inches. Handsomely finished and covered with leather.

This camera is especially designed for tourists who desire a small, compact camera that will give the largest possible picture with the least trouble. No focusing is required. Fitted with finder and revolving stops. This camera can be

LOADED IN DAYLIGHT.

	Price.
B Daylight Kodak, loaded for 24 exposures, - - - -	\$15 00
Complete outfit for developing, printing and finishing the pictures, 1 50	



C ORDINARY KODAK.

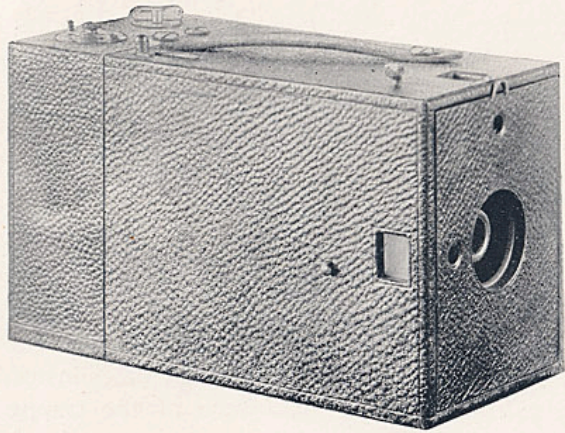
C Ordinary Kodak:

For rectangular pictures, 4 x 5 inches; capacity, 24 pictures without reloading. Size of camera, 5 x 6½ x 11¼ inches. Weight, 3 pounds 7 ounces; length of focus of lens, 7 inches. Fitted with focusing lever and index, 2 finders, revolving stops and adjustable speed for shutter.

Handsomely finished in natural wood.

At a small extra cost this camera can be supplied with a glass plate attachment, which is interchangeable with the film holder and which permits the use of glass plates instead of films when desired. This device has none of the trappy features usual in such attachments, and forms a complete and symmetrical instrument far superior to other glass plate cameras.

	Price.
C Ordinary Kodak, loaded for 24 exposures, - - -	\$15 00
Attachment for glass plates, - - - - -	4 00
Double plate holders, each, - - - - -	1 00
Complete outfit for developing, printing and finishing the pictures, -	1 50



C DAYLIGHT KODAK.

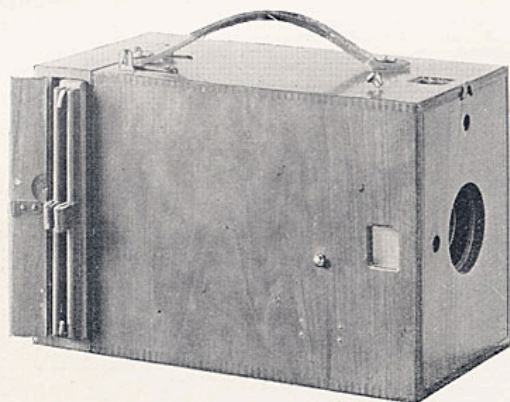
C Daylight Kodak:

For rectangular pictures, 4 x 5 inches; capacity 24 exposures; size of camera, 5 x 6½ x 11¼ inches; weight, 3 lbs. 7 oz.; length of focus of lens, 7 inches. Fitted with focussing lever and index, 2 finders, revolving stops and adjustable speed for shutter. Handsomely finished and covered with leather. This Kodak can be

LOADED IN DAYLIGHT.

At a small additional cost this camera can be supplied with a *Glass Plate Attachment*, which is interchangeable with the film holder and permits the use of glass plates. This device has none of the trappy features usual in such attachments and forms with the camera a compact and symmetrical instrument.

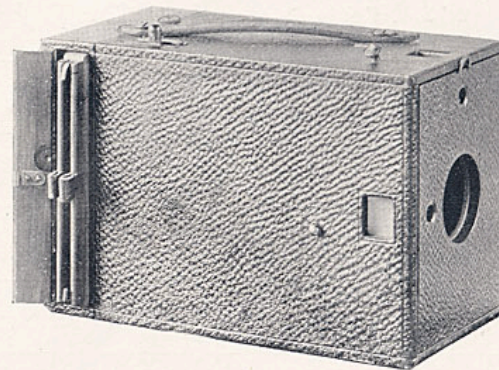
	Price.
C Daylight Kodak loaded for 24 exposures, - - - -	\$25 00
Attachment for glass plates, - - - - -	5 00
Double plate holders, each - - - - -	1 00
Complete outfit for developing, printing and finishing the pictures, -	1 50



C Ordinary Kodak:

For Glass Plates. This camera is a most compact, convenient and serviceable glass plate hand camera, for the money. Fitted with focusing lever and index, 2 finders, revolving stops in lens, adjustable speed for shutter and spring ground glass frame.

	Price.
C Ordinary Glass Plate Kodak, including 1 double dry plate holder, - - - - -	\$15 00
Complete outfit for developing, printing and finishing the pictures, - - - - -	1 50
Roll holder for above, not loaded, - - - - -	5 00



C Special Kodak:

For Glass Plates. This camera is similar in construction to the C Ordinary except that it is covered with leather and has a double combination lens. It is a splendid instrument.

	Price.
C Special Glass Plate Kodak, including 1 double dry plate holder, - - - - -	\$25 00
Complete outfit for developing, printing and finishing the pictures, - - - - -	1 50
Roll holder for above, not loaded, - - - - -	6 00

KODAK PRICE LIST.

SIZE OF PICTURE.	2 1/2 In. Diam.	3 1/2 In. Diam.	3 1/4 x 4 1/4		4 x 5		5 x 7	6 1/2 x 8 1/2	Line
			250	100	250	100	100	48	1 2
Capacity, Exposures, - - - - -	150	150					100	48	1
Length of Spool, - - - - -	2 3/4 in.	3 3/4 in.	4 1/4 in.	3 1/4 in.	5 in.	4 in.	5 in.	6 1/2 in.	2
Price Complete,* - - - - -	No. 1. \$25.00	No. 2. \$32.50	No. 3. \$40.00	No. 3. \$40.00	Regular \$50.00	Junior \$50.00	No. 4. \$60.00	No. 6. \$100.00	3
*Loaded for Exposures,									
⊕ Reloading, Developing and Printing,	\$10.00	\$10.00	\$10.00	\$10.00	\$10.00	\$10.00	\$10.00	\$10.00	5
⊕ Developing and Printing only, -	\$7.50	\$7.50	\$7.50	\$7.50	\$7.00	\$7.00	\$7.00	\$6.00	6
+ Spool for Reloading, -	100	60	60	60	48	48	32	24	7
+ Spool for Reloading, -	"	100	100	100	100	100	54	48	8
+ Spool for Reloading, -	\$3.75	\$6.35	\$10.50	\$15.50	\$6.25	\$6.25	\$6.00	\$8.00	9
Developing and Printing only, each,	7 1/2 c.	12 1/2 c.	12 1/2 c.	12 1/2 c.	15 c.	15 c.	20 c.	25 c.	10
Developing only, each, - - - - -	4 c.	6 c.	6 c.	6 c.	8 c.	8 c.	10 c.	10 c.	11
⊗ Printing only each, - - - - -	6 c.	8 c.	8 c.	8 c.	10 c.	10 c.	12 1/2 c.	17 1/2 c.	12

⊕ This price is full spools only. For number of exposures included, see line 4.
 + In ordering spools always state whether for *Regular, Junior or Folding*, to avoid mistakes in length of spools. (See line 2.)
 ⊗ This price includes gold bevel maroon mounts.
 ⊗ On orders for *developing or printing less than one dozen, 25 cents extra will be charged to cover expense of packing, etc.*

KODAK PRICE LIST---Continued.

	A.	B.	C.
SIZE NEGATIVE, 2 3/4 x 3 1/4			
“Daylight” style, covered with black leather fitted for spools to <i>reload in daylight</i> -	\$8 50	\$15 00	\$25 00
“Ordinary” style, finished in natural wood, -	6 00	10 00	15 00

All the above Kodaks are loaded with spools for 24 exposures, and have automatic exposure counters.

A Daylight and A Ordinary Kodaks have single lenses with fixed stops. B Ordinary and C Ordinary have single lenses and revolving stops.

B Daylight and C Daylight Kodaks have double lenses and revolving stops.

A and B Kodaks have fixed universal focus. C Kodaks have focussing lever and index and adjustable speed for shutter.

Spools for 24 exposures, Daylight, - - -	75	1 10	1 60
Spools for 24 exposures, Ordinary, - - -	65	1 00	1 50

In ordering spools always give Camera letter and *state whether Daylight or Ordinary* patterns.

Reloading, developing and printing, 24 exposures, - - - - -	2 50	4 00	5 00
Developing and printing only, - - - - -	1 85	3 00	3 50
Printing only, Prints mounted on gold-beveled edge cards, burnished, - - - - -	06	08	10
Developing only, - - - - -	04	06	08

On orders for less than one dozen prints 25 cents extra will be charged.

GLASS DRY PLATE ATTACHMENTS.

For the C Kodaks.

Glass Plate Attachment for Daylight style, - - - - -	\$5 00
Glass Plate Attachment for Ordinary, - - - - -	4 00
Double Holders, each, - - - - -	1 00
Eastman's Dry Plates, 4 x 5, per doz., - - - - -	65

LEATHER CARRYING CASES.

WITH SHOULDER STRAP.

No. 1,	- - - - -	\$1 50
No. 2,	- - - - -	2 25
No. 3,	- - - - -	2 25
No. 3, Jr.,	- - - - -	2 25
No. 4,	- - - - -	2 50
No. 4, Jr.,	- - - - -	2 50

	A.	B.	C.
Black Sole Leather, - - - - -	\$1 20	\$1 60	\$2 30
Leatherette, - - - - -	60	80	1 00

REELS.

Extra Reels for Ordinary Kodaks, - - -	25	25	25
--	----	----	----

CAPS AND PLUGS.

Felt Plugs for Regular and Junior Kodaks, -	25
Lens Caps for Folding Kodaks, - - -	25
For time exposures. A cap or plug is not required for making time exposures with A B C Kodaks ; but we can furnish them if desired, - - - - -	10

NOTE.—In ordering always state camera size and whether Regular or Folding.

The Kodet.

The Kodet.

THE KODET was especially designed for those who want a glass plate camera which can be easily adapted to use with roll films, but do not care to invest in an expensive instrument. The Kodets are made in two styles, the Regular and Folding, and are equal to any of the glass plate cameras on the market except the Junior and Folding Kodaks.

The Regular and Folding Kodets are as compact and complete as any glass plate hand camera made, and by the addition of a roll holder are immediately convertible into film cameras with a capacity of 48 exposures. The roll holders are not trappy attachments, but when in use are carried inside of the camera and completely out of the way. They are interchangeable with our plate holders and as they are provided with a dark slide the change from plates to films can be made as readily in the field as the change from one plate holder to another.

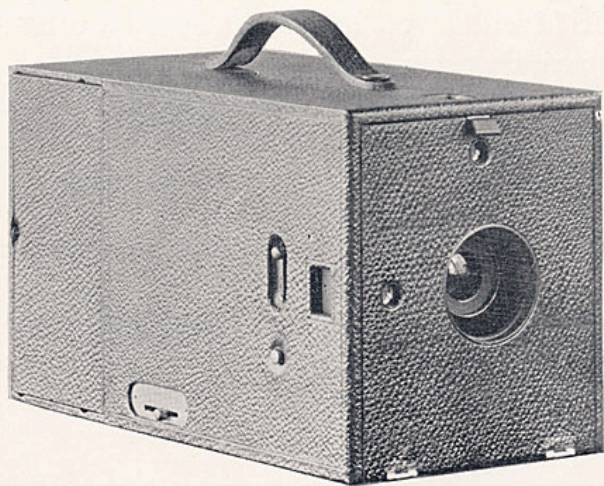
The No. 4 Regular Kodet is about the size and shape of the No. 4 Junior Kodak and will be found to be very convenient for those who expect to do a great deal of snap shot work, as the focusing, setting

the shutter and "pressing the button" can all be done without opening the camera.

The Folding Kodet when closed is considerably smaller than the regular and it is especially adapted to those who expect to do a great deal of tripod work. It is very desirable for travelers, especially when fitted with a roll holder, on account of the very small space that it occupies.

The Kodets of either style can be focused either with the index or on the ground glass and will carry three double plate holders or a roll holder in the space in the back.

Every Kodet is tested in actual use before being sealed for shipment, and every purchaser is thus assured of a camera that is in perfect working order.



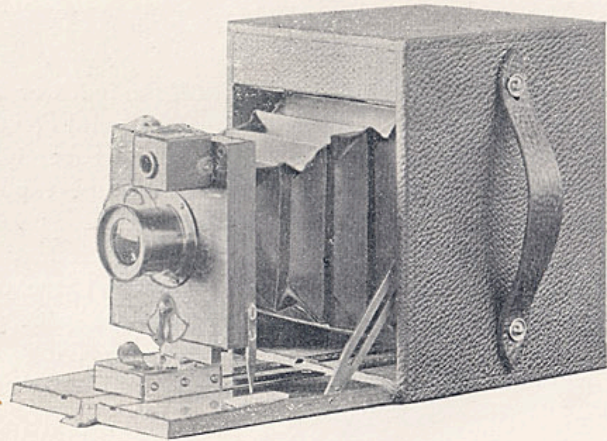
NO. 4 KODET.

The No. 4 Kodet:

For rectangular pictures, 4 x 5 inches; size of camera, $5\frac{1}{4} \times 6\frac{1}{2} \times 10\frac{7}{8}$ inches = 402 cubic inches; weight, 3 lbs. 3 ozs.; length of focus of lens, $6\frac{1}{8}$ inches.

The No. 4 Kodet can be focused with the index or on the ground glass; it is fitted with finders for horizontal or vertical exposures and the speed of shutter is regulated by merely moving a lever; another lever sets the shutter for time exposures, which can be made without the use of a cap. Can be used with either plates or films (the price does not include roll holder for film), and has two sockets for tripod screws. Three double plate holders or a roll holder can be carried in the space in the back of camera. The lens is fitted with revolving stops. Handsomely finished in quartered sycamore and covered with leather.

Price, No. 4 Kodet, with one double plate holder, achromatic lens,	\$12 00
Price, do., with rapid rectilinear lens,	17 50
Roll Holder, capacity, 48 exposures (not loaded),	10 00
Complete outfit for developing, printing and finishing the pictures,	1 50



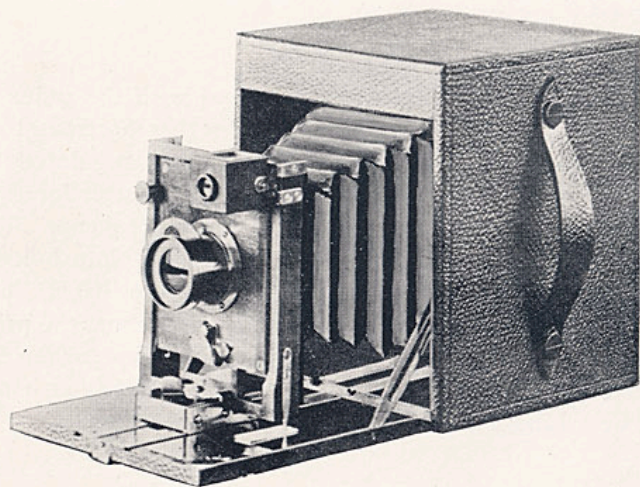
THE NO. 4 FOLDING KODET.

The No. 4 Folding Kodet:

For rectangular pictures 4 x 5 inches; size of camera, folded, $5\frac{1}{4} \times 5\frac{1}{4} \times 6\frac{1}{2}$ inches = 188 cubic inches; weight, 2 lbs.; length of focus of lens, $6\frac{1}{8}$ inches.

The No. 4 Folding Kodet can be focused with the index or on the ground glass; is fitted with finder for horizontal or vertical exposures, and the speed of shutter is regulated by merely moving a lever; another lever sets the shutter for time exposures, which can be made without the use of a cap. The lens is fitted with revolving stops. Three double plate holders or a roll holder can be carried in space in the back. The Folding Kodet can be used with either plates or films (the price does not include roll holder for film), and has two sockets for tripod screws. It is well made in every particular; is handsomely finished in mahogany and covered with leather.

Price, No. 4 Folding Kodet, with one double plate holder, achromatic lens, - - - - -	\$12 00
Price, No. 4 Folding Kodet, with rapid rectilinear lens, - - - - -	17 50
Price, No. 4 Folding Kodet, covered with black leather, finished in polished sycamore, highly buffed brass fittings, with one double plate holder, achromatic lens, - - - - -	14 00
Price, do., with rapid rectilinear lens, - - - - -	19 00
Roll Holder, capacity 48 exposures, (not loaded), - - - - -	10 00
Complete outfit for developing, printing and finishing the pictures, - - - - -	1 50



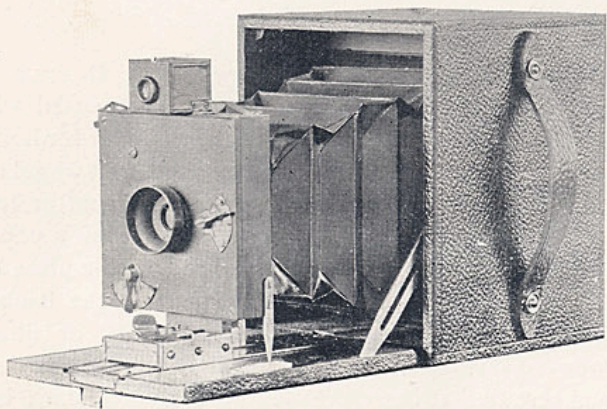
NO. 4. FOLDING KODET, SPECIAL.

The No. 4 Folding Kodet, Special:

For rectangular pictures, 4 x 5 inches; size of camera, folded, $5\frac{3}{4} \times 6\frac{1}{4} \times 7$ inches = 252 cubic inches; weight, 2 lbs., 4 ozs.; length of focus of lens, $6\frac{1}{8}$ inches.

The No. 4 Kodet, Special, is fitted with DOUBLE SWING BACK and rising and falling front. It can be focused with the index or on the ground glass; is fitted with finder for horizontal or vertical exposures, and the speed of shutter is regulated by merely moving a lever; another lever sets the shutter for time exposures, which can be made without the use of a cap. The lens is fitted with revolving stops. Three double plate holders or a roll holder can be carried in the space in the back. The Folding Kodet can be used with either plates or films (the price does not include roll holder for films), and has two sockets for tripod screws. It is well made in every particular; is handsomely finished in polished mahogany, has highly buffed brass fittings and is covered with leather.

Price, No. 4 Folding Kodet, Special, with one double plate holder, achromatic lens, - - - - -	\$15 00
Price, do., with rapid rectilinear lens, - - - - -	20 00
Roll Holder, capacity, 48 exposures, (not loaded), - - - - -	10 00
Complete outfit for developing, printing and finishing the pictures, - - - - -	1 50



NO. 4 FOLDING KODET, JUNIOR.

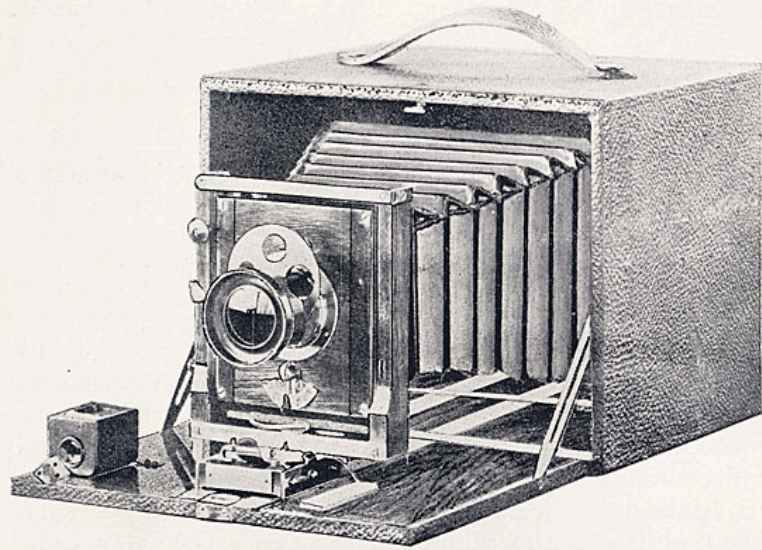
No. 4 Folding Kodet Junior:

For rectangular pictures, 4 x 5 inches; size of camera, folded, $5\frac{1}{4} \times 5\frac{1}{4} \times 6\frac{1}{2}$ inches = 188 cubic inches; weight, 2 lbs.; length of focus of lens, $6\frac{1}{8}$ inches.

The Junior Kodets have a new automatic shutter in which one button "does it all," sets and releases the shutter, and changes it from time to instantaneous exposures. The action of the shutter is strong and certain, yet it does not jar the camera. The speed is regulated by merely moving a lever.

The No. 4 Folding Kodet Junior can be focussed with the index or on the ground glass; is fitted with finder for horizontal or vertical exposures. The lens is strictly achromatic and is fitted with a set of three stops. Three double plate holders or a roll holder can be carried in space in the back. The Folding Kodet can be used with either plates or films (the price does not include roll holder for film), and has two sockets for tripod screws. It is well made in every particular; is handsomely finished in mahogany and covered with leather.

Price No. 4 Folding Kodet Junior, with one double plate holder,	
achromatic lens,	\$10 00
Roll Holder, capacity, 48 exposures (not loaded),	10 00
Complete outfit for developing, printing and finishing the pictures,	1 50



NO. 5 FOLDING KODET.

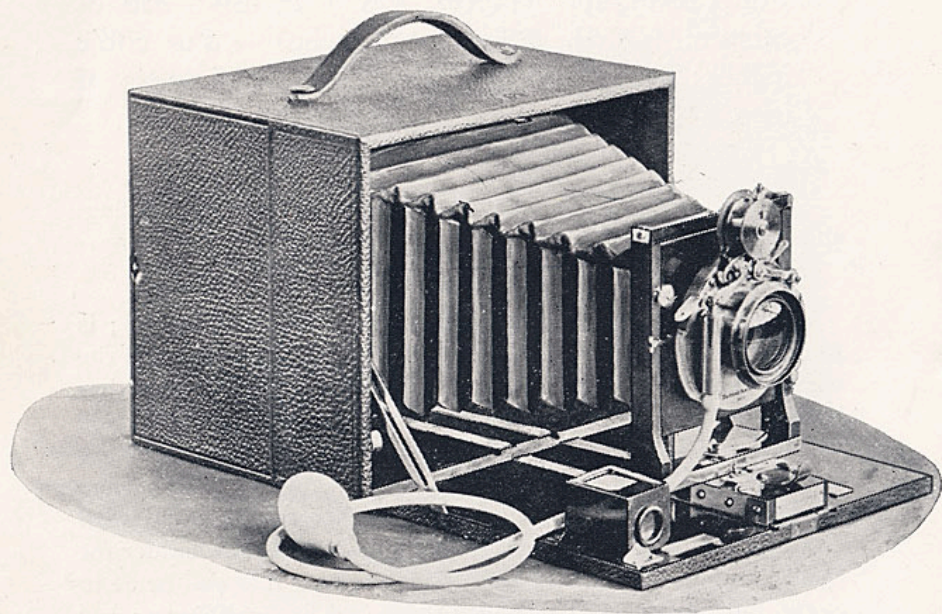
The No. 5 Folding Kodet:

For rectangular pictures, 5 x 7 inches ; size of camera, folded, $6\frac{7}{8}$ x 7 x 9 inches = 434 cubic inches ; weight, 3 lbs., 8 oz. ; length of focus of lens, $8\frac{1}{4}$ inches.

The No. 5 Folding Kodet has swing back and rising, falling, and sliding front.

It can be focused with the index or on the ground glass ; is fitted with finder for horizontal or vertical exposures, and the speed of shutter is regulated by merely moving a lever ; another lever sets the shutter for time exposures, which can be made without the use of a cap. The lens is fitted with revolving stops. Three double plate holders or a roll holder can be carried in space in the back. The Folding Kodet can be used with either plates or films (the price does not include roll holder for film), and has two sockets for tripod screws. It is well made in every particular ; is handsomely finished in mahogany ; has buffed brass fittings and is covered with leather.

Price, No. 5 Folding Kodet, with one double plate holder, achromatic lens,	- - - - -	\$22 00
Price, do, with rapid rectilinear lens,	- - - - -	30 00
Roll Holder, capacity 54 exposures (not loaded),	- - - - -	12 50



NO. 5 FOLDING KODET, SPECIAL.

Fitted with Bausch & Lomb Iris Diaphragm Shutter.

The No. 5 Folding Kodet, Special:

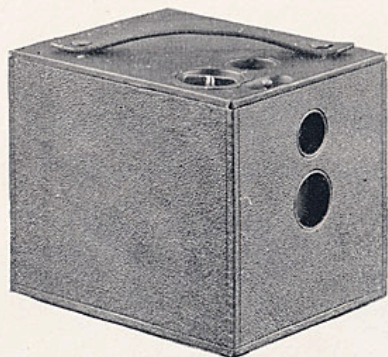
For rectangular pictures 5 x 7 inches; size of camera, folded, $6\frac{7}{8} \times 7\frac{1}{8} \times 9$ inches = 441 cubic inches; weight, 3 lbs. 9 oz.; length of focus of lens $8\frac{1}{4}$ inches.

The No. 5 Folding Kodet Special has DOUBLE SWING BACK and rising, falling and sliding front.

It can be focused with the index or on the ground glass, and is fitted with finder for horizontal or vertical exposures. The speed of Kodet shutter is regulated by merely moving a lever; another lever sets the shutter for time exposures, which can be made without the use of a cap. The lens is fitted with revolving stops. Three double plate holders or a roll holder can be carried in space in back. The Folding Kodet Special can be used with either plates or films (the price does not include roll holder for film), and has two sockets for tripod screws. It is well made in every particular; is highly finished in mahogany; has buffed brass trimmings and is covered with morocco.

Price, No. 5 Folding Kodet Special, with rapid rectilinear lens, and one double plate holder, Kodet shutter,	-	-	\$35 00
*Price do, with Bausch & Lomb iris diaphragm shutter and pneu- matic release,	-	-	48 00
Roll Holder, capacity 54 exposures (not loaded),	-	-	12 50

*For description of Bausch & Lomb shutter, see page 43, third paragraph.



The No. 2 Bullet:

For pictures $3\frac{1}{2} \times 3\frac{1}{2}$ inches; capacity, 18 exposures without reloading; size of camera $4\frac{1}{2} \times 4\frac{3}{4} \times 5\frac{3}{4}$ inches = 110 cubic inches; weight, 21 oz.; length of focus of lens $4\frac{1}{8}$ inches.

The film for this camera is put up in light proof rolls of 12 or 18 exposures, and it can therefore be loaded in daylight.

The Bullet automatic shutter is a feature. One button does it all—sets and releases the shutter and changes it from time to instantaneous exposures. The action of the shutter is strong and certain, yet it does not jar the camera.

The lens is always in focus. A large finder enables the operator to locate the image accurately. Handsomely finished and covered with leather.

Price, No. 2 Bullet camera, achromatic lens, - - - -	\$8 00
Black Sole Leather Carrying Case, - - - -	1 25
Light-proof roll of film, 12 exposures, $3\frac{1}{2} \times 3\frac{1}{2}$, - - - -	60
“ “ “ “ 18 “ $3\frac{1}{2} \times 3\frac{1}{2}$, - - - -	90
Complete outfit for developing, printing and finishing the pictures, 1 50	

Kodet Price List:

	No. 4. 4 x 5	No. 5. 5 x 7
No. 4, Regular style, covered with black leather, with one double plate holder, achromatic lens, - - - - -	\$12 00	
Price, do., with rapid rectilinear lens, - - - - -	17 50	
No. 4, Folding style, covered with black leather, and finished in mahogany, with one double plate holder, achromatic lens, -	12 00	
Price, do., with rapid rectilinear lens, - - - - -	17 50	
No. 4, Folding style, covered with black leather and finished in sycamore, highly buffed brass fittings, with one double plate holder, achromatic lens, - - - - -	14 00	
Price, do., with rapid rectilinear lens, - - - - -	19 00	
Price, No. 4, Folding, special , with <i>double swing back</i> and rising front, covered with black leather, beautiful mahogany finish, highly buffed fittings, with one double plate holder, achromatic lens, - - - - -	15 00	
Price, do., with rapid rectilinear lens, - - - - -	20 00	
No. 4, Folding, Junior , covered with black leather and finished in mahogany with one double plate holder, achromatic lens, -	10 00	
NOTE.—This camera cannot be furnished with double lens.		
No. 5, Folding , with swing back, rising and sliding front, covered with black leather and finished in mahogany, with one double plate holder, achromatic lens, - - - - -	\$22 00	
Price do., with rapid rectilinear lens, - - - - -	30 00	
No. 5, Folding, special , with <i>double swing back</i> , rising, falling and sliding front, covered with best black leather, highly finished in mahogany, buffed brass trimmings, with one double plate holder, rapid rectilinear lens, Kodet shutter, - - - -	35 00	
Price do, with Bausch & Lomb iris diaphragm shutter and pneumatic release,	48 00	
Roll Holders (capacity 48 exposures, for No. 4; 54 exposures for No. 5) fitted with dark slide and automatic counter for exposures (not loaded), - - - - -	10 00	12 50
Double plate holders, each, - - - - -	1 00	1 25
Film.		
Spools of New Transparent Film for 48 exposures, 4 x 5 - - - -	3 00	
“ “ “ “ “ “ 32 “ 5 x 7, - - - -		4 00
“ “ “ “ “ “ 54 “ 5 x 7, - - - -		6 00

In ordering Roll Holders, Plate Holders or film *always state the Camera number, and whether Regular or Folding.*

KODET PRICE LIST CONTINUED

	No. 4. 4 x 5.	No. 5. 5 x 7.
Reloading, developing and printing 48 exposures, - - -	\$10 00	
" " " " 32 " - - -		\$10 00
Developing and printing only, 48 " - - -	7 00	
" " " " 32 " - - -		6 00
Printing only, prints mounted on gold-bevel edged cards, burnished, each, - - - - -	10	12½
Developing only, each, - - - - -	08	10

On orders for less than one dozen prints, 25 cents extra will be charged.

LEATHER CARRYING CASES.

WITH SHOULDER STRAPS.

Black Sole Leather Carrying Case, for No. 4 Regular, - - -	2 30
Leatherette, - - - - -	1 00

The Folding Kodets are self contained when closed and require no carrying case.

FELT PLUGS.

For time exposures. A plug is not required in making time exposures with Kodets, but we furnish them for the Regular style if desired, 0 25

LENS CAPS FOR FOLDING KODETS.

For time exposures. A cap is not required for making time exposures, but we can furnish them if desired, - - - - - 0 25 0 25

LEATHER CASES.

To hold 3 double plate holders or roll holder.

Black Sole Leather, - - - - -	1 00	1 50
-------------------------------	------	------

REELS.

Extra Reels for Kodets, - - - - -	10	10
-----------------------------------	----	----

In ordering Reels, always give exact designation of instrument.

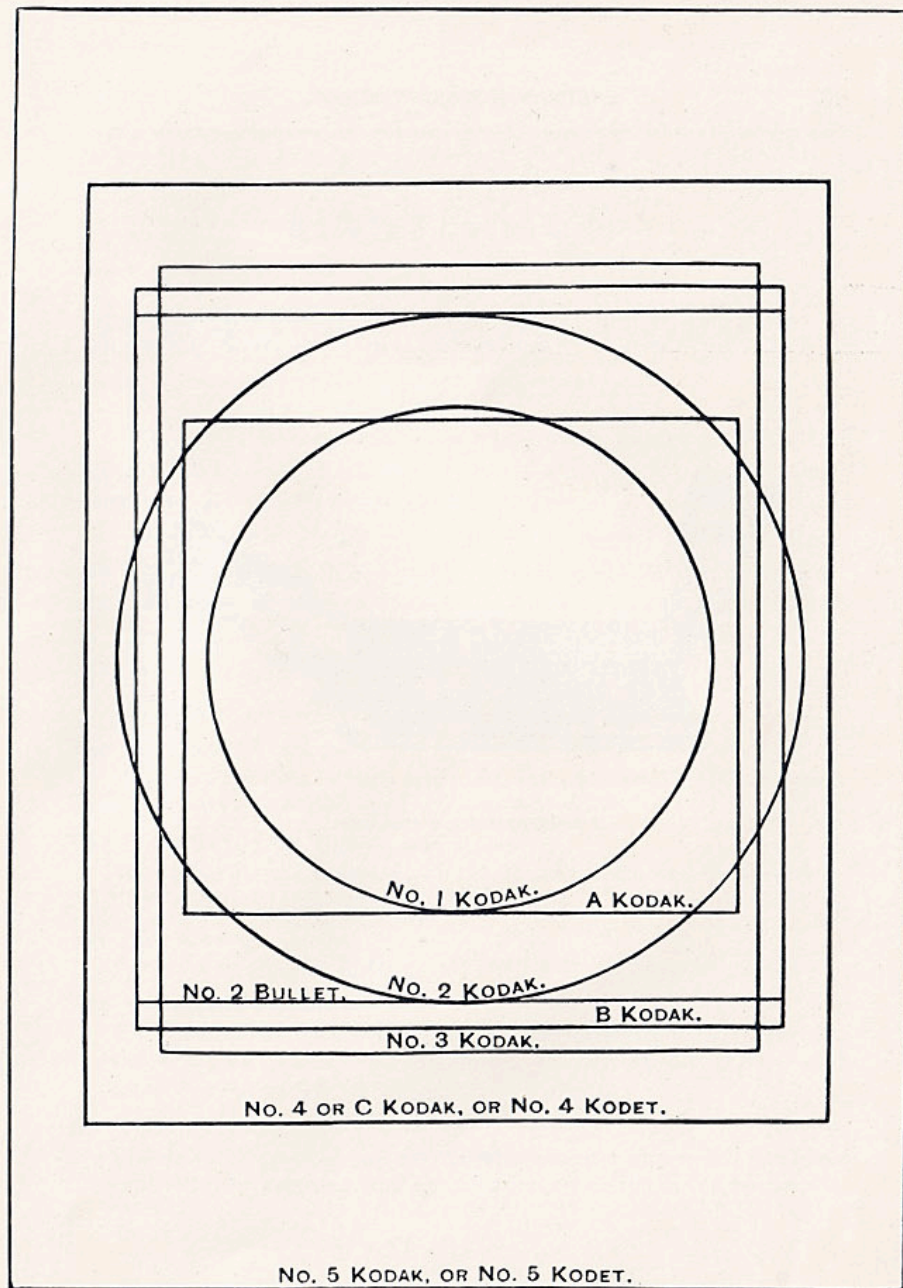
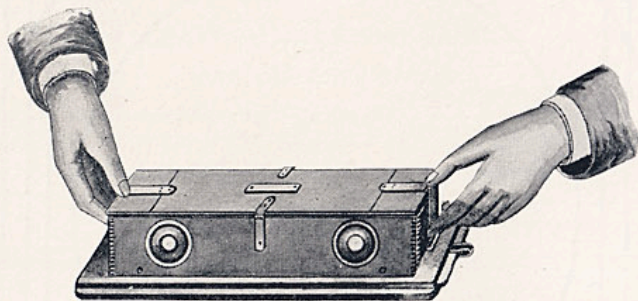


DIAGRAM SHOWING SIZE OF KODAK, KODET AND BULLET PICTURES.



IMPROVED ROLL HOLDER.

EASTMAN'S Improved Roll Holder.

This Roll Holder embodies the latest improvements, the most important of which is the INTERMITTENT MARKER, which marks the division between each exposure.

The intermittent marker makes *one distinct perforation* on one edge of the film at the end of every exposure. The other edge is marked as heretofore with a series of perforations, which enables the operator to separate exposures where two or more have been made on one section of film.

The most important features of this model are :

The Automatic Tension

Whereby the film is kept stretched flat and smooth and in focus under varying conditions of the atmosphere.

The Interchangeable Spools and Reels

Which permit the reloading of the exposed film and the insertion of a fresh spool without unwinding the film.

The Side Guards

For holding down in focus the side edges of the film.

The Automatic Perforator

(Of which the intermittent marker is the latest form), for marking the divisions between the exposures, so that they can be separated without danger of cutting into the picture.

An Automatic Register

Counts the exposures and the operator can thus always tell just how much film he has used, and how much remains in the roll holder.

FITTING THE ROLL HOLDER.

Roll Holders for Eastman Cameras are always fitted at the factory. Roll Holders for other cameras can either be fitted by us or any skillful wood-workman.

To enable fitting to be readily done, the shutter frame of the holder is left rather full in size so that it can be *cut down* to fit any ordinary camera.

We give a table below showing the size of the holders as they are kept in stock, and the smallest size to which they can be trimmed. Holders can be built out to fit square cameras when required.

Price list for fitting on page 93.

Dimensions and Weights of Roll Holders.

ROUGH MEASURE.						SMALLEST SIZE TO WHICH ROLL HOLDER CAN BE TRIMMED.				
Size of Negative.	Long.	Wide.	Thick.	Fo-cus.	Weight	Long.	Wide.	Thick.	Fo-cus.	Weight
3¼ x 4¼ in.	6¾	5¼	2 ⁵ / ₁₆	⁵ / ₁₆	16 oz.	5 ⁵ / ₈	4½	2½	³ / ₁₆	15 oz.
4 x 5 "	7½	6	2 ⁵ / ₈	"	20 "	6 ⁷ / ₁₆	5¼	2 ⁷ / ₈	"	18 "
4¼ x 5½ "	8	6½	2 ⁵ / ₈	"	23 "	6 ⁷ / ₈	5½	2 ⁷ / ₈	"	20 "
4¼ x 6½ "	9	6½	2 ⁵ / ₈	"	24 "	7 ¹⁵ / ₁₆	5½	2 ⁷ / ₈	"	22 "
4¾ x 6½ "	9	6¾	2 ¹¹ / ₁₆	"	22 "	7 ¹⁵ / ₁₆	6	2 ¹ / ₂	"	23 "
5 x 7 "	9 ⁵ / ₈	7¼	2 ¹³ / ₁₆	"	28 "	8 ⁷ / ₁₆	6¾	2 ⁵ / ₈	"	25 "
5 x 7½ "	10 ¹ / ₈	7¼	2 ¹³ / ₁₆	"	30 "	9	6¾	2 ⁵ / ₈	"	27 "
5 x 8 "	10 ⁵ / ₈	7¼	2 ¹³ / ₁₆	"	33 "	9½	6¾	2 ¹¹ / ₁₆	"	29 "
6½ x 8½ "	11	8 ⁹ / ₁₆	2 ¹³ / ₁₆	"	36 "	10 ¹ / ₁₆	7 ⁷ / ₈	2 ⁵ / ₈	"	32 "
8 x 10 "	12 ⁹ / ₁₆	10 ¹ / ₈	2 ¹⁵ / ₁₆	"	47 "	11 ³ / ₄	9¾	2 ³ / ₄	"	42 "
9 x 12 cm.	7¼	5½	2 ⁵ / ₁₆	"	18 "	6	4 ¹³ / ₁₆	2½	"	16 "
13 x 18 "	9 ⁹ / ₁₆	7¼	2 ¹³ / ₁₆	"	28 "	8 ⁷ / ₁₆	6¾	2 ⁵ / ₈	"	25 "
18 x 24 "	12	9¼	2 ⁷ / ₈	"	39 "	10 ⁷ / ₈	8½	2 ¹ / ₁₆	"	34 "

Prices of Model of 1889 Roll Holders.

SIZE.	PRICE.	SIZE.	PRICE.
3¼ x 4¼	\$10 00	5 x 7½	\$12 50
4 x 5	10 00	5 x 8	12 50
4¼ x 5½	10 00	6¼ x 8½	16 00
4¼ x 6½	10 00	8 x 10	20 00
4¾ x 6½	12 50	10 x 12	24 00
5 x 7	12 50		

Roll Holders for Kodaks.

Roll Holders for	PRICE.
No. 3 Junior, not loaded,	\$10 00
" " " No. 4 " " " "	10 00
" " " No. 4 Folding, " " " "	10 00
" " " No. 5 " " " "	12 50
" " " No. 6 " " " "	16 00
" " " C Ordinary, " " " "	5 00
" " " C Special, " " " "	6 00

Roll Holders for Kodets.

Roll Holders for	PRICE.
No. 4 Regular, not loaded,	10 00
" " " No. 4 Folding, " " " "	10 00
" " " No. 5 " " " "	12 50

Roll Holders for Hawkeye Cameras.

4 x 5, - - - - \$8 00.

French and German Sizes.

SIZE.	PRICE.	SIZE.	PRICE.
9 x 12 cm.	\$10 00	18 x 24 cm.	\$16 00
13 x 18 "	12 50		

Price List for fitting Roll Holders to Cameras.

Eastman's Cameras.

SIZE.	PRICE.
4¼ x 5½ and 4¼ x 6½	\$1 00
5 x 7 to 6¼ x 8½	1 25
8 x 10 "	1 50

No charge when purchased with Camera.

Rochester Optical Co.'s "Ideal."

SIZE.	PRICE.
3¼ x 4¼ to 8 x 10	\$2 00

Rochester Optical Co.'s "New Model."

SIZE.	PRICE.
3¼ x 4¼ to 5¼ x 6½	\$2 25
5 x 7 to 6¼ x 8½	3 00
8 x 10 "	3 50

No charge when purchased with Camera.

Scovill & Adams Co.
"Model" "76," "Waterbury" or "Philadelphia."

SIZE.	PRICE.
3¼ x 4¼ to 4¼ x 6½	\$1 75
5 x 7 to 8 x 10	2 00

E. & H. T. Anthony & Co.'s "Novel" or "Improved Model."

SIZE.	PRICE.
3¼ x 4¼ to 4¼ x 6½	\$1 75
5 x 7 to 6¼ x 8½	2 00
8 x 10 "	2 50

Scovill & Adams "Revolving Back" Camera, requires extensive alterations to the back, which makes the cost of fitting from \$4.00 to \$8.00 each.

Anthony Duplex and Novelette Cameras require an adapter, and the cost for fitting is from \$6.00 to \$10.00 each.

Extra Reels for Roll Holders.

SIZE.	PRICE.	SIZE.	PRICE.
For 3¼ x 4¼	50 cents.	For 6¼ x 8½	75 cents.
" 4 x 5	50 "	" 8 x 10	75 "
" 4¼ x 5½	50 "	" Kodaks,* Nos. 1, 2, 3, 4 or 5,	50 "
" 4¼ x 6½	50 "	" No. 6 Kodak	75 "
" 4¾ x 6½	50 "	" A. B. C. Ord. Kodaks*	25 "
" 5 x 7	50 "	" Kodets*	10 "
" 5 x 8	50 "		

*In ordering specify which Kodak or Kodet.

French and German Sizes.

SIZE.	PRICE.	SIZE.	PRICE.
For 9 x 12 cm.	50 cents	For 18 x 24 cm.	75 cents
" 13 x 18 "	50 "	Specify for which model, 1886 or 1889.	

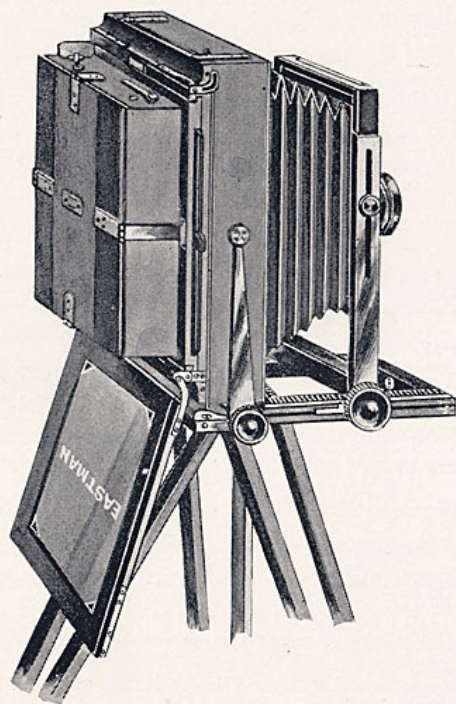


Fig. 1.

INTERCHANGEABLE VIEW CAMERA.

EASTMAN'S Interchangeable View Camera.

(REVERSIBLE BACK.)

The success attending the introduction of this camera shows in an eminent degree the appreciation of the public of our efforts to supply, at a moderate price, a camera of a finer grade of workmanship than has hitherto been attainable in this country. The great care taken in all the details of the manufacture, from the scientific seasoning of the wood to the final polishing of the wood and the lacquering of the brass work, leaves little to be desired even by the most critical, while the design combines in the highest degree the essential qualities of the perfect camera,

Strength, Lightness, Compactness, Rigidity.

In recommending the purchase of a fine camera, we would suggest to the intending purchaser, that the extra expenditure of a few dollars is soon forgotten in the satisfaction of possessing a really good piece of apparatus, while a poor one is a continual source of dissatisfaction and regret.

Novel Features of the Eastman Interchangeable View Camera.

Interchangeable body and bed. The thumb-screws in the bed which control the vertical swing, are so arranged that when unscrewed the body can be lifted from the bed and the bellows detached from the front by turning a button; this feature enables the substitution of one body for another of a different

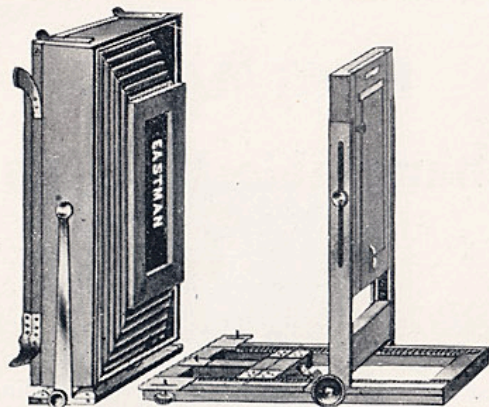


Fig. 2.

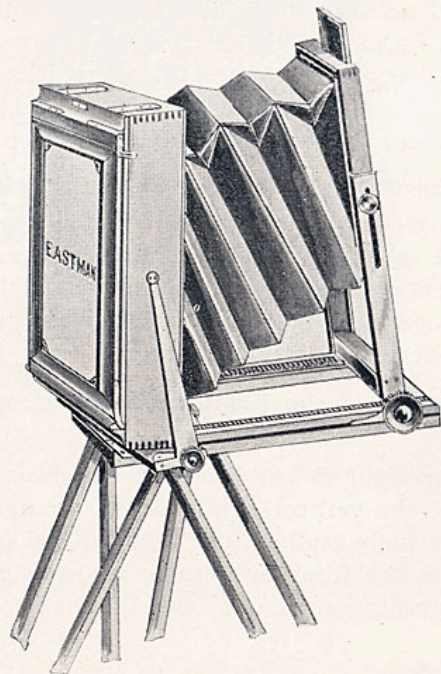


Fig. 3.

size on the same bed. For instance, a customer who purchases a camera of any given size, can at any future time obtain a back for any other size which will fit on the same bed, at an additional cost of only one-half the price of a new camera. The means employed for detaching the parts do not in any way add to the complexity of the camera.

Double Swing. The vertical swing can be operated to detach the body, if desired, as above described. The horizontal swing operates in the center and close to the ground glass (the correct position theoretically). The side-supports act only as pivots, the body being supported by, and clamped to, the bed at the bottom, thus making the whole back as rigid as if in one piece with the bed. This is an important point, and the device has only to be seen to be appreciated.

Double Rising Front. The front is provided with two means for raising the lens: a movable front board of the usual construction and an adjustable front, by means of which the whole front of the camera carrying the bellows can be raised and lowered at will, thus giving more than double the usual range of adjustment. Every photographer knows that most cameras have insufficient range in this respect, especially if constructed with a view to compactness. Fig. 3 shows the enormous range of adjustment permitted by our construction.

Front Focus. The Eastman Camera has double rack and pinion for focusing, the rack and pinions being cut (not cast), and the movement is smooth and easy. One of the principal advantages of the front focus over the back focus, is that the weight is brought directly over the tripod where it belongs.

Extension Bed. The length of bed is adapted in each size to the shortest focus lens that will cover the plate, and an extension piece is provided with each camera for use with extra long focus lens, or for copying.

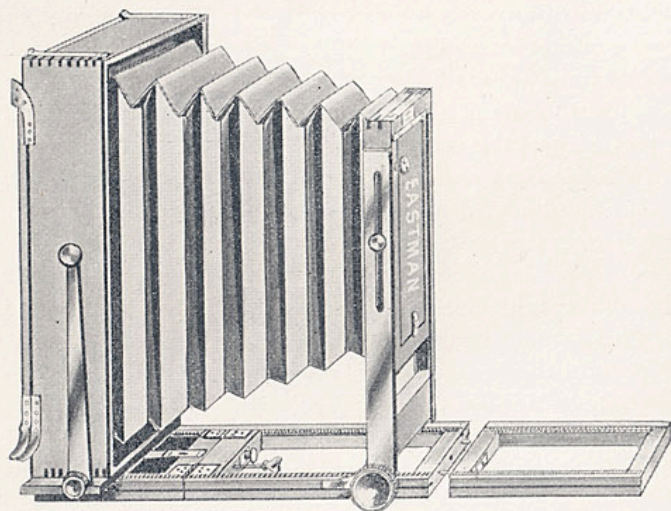


Fig. 4.

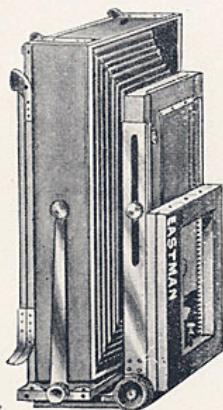


Fig. 5.

Reversible Back. The reversible back carries a hinged ground-glass frame, having hinges of such construction as will throw the frame out of the way of the roll-holder without detaching. The ground-glass frame may be entirely detached if desired, being provided with spring catch-hinges for that purpose.

Finish. The camera body is of the best selected mahogany, French polished (no varnish), without stain, this treatment being the best for wear and to bring out the natural beauties of the wood. The brass work is hand polished (not buffed) and lacquered, microscope style; no nickel-plating is used to cover bad workmanship. All screws oval-headed, polished and lacquered. The workmanship in these cameras is claimed to be better than found on any other camera in the market. The object of placing these cameras on the market is not to compete with cheap goods, but to supply a camera of the finest possible workmanship at a moderate price.

THE EUREKA GROUND-GLASS ADJUSTER

designed for these cameras, combines all the advantages of the spring actuated ground-glass and the old style hinged back, inasmuch as it can be used either way. Fig. 6 shows it thrown down for insertion of roll-holder; Fig. 7 thrown open parallel for insertion of plate-holder, and Fig. 8 closed flat.

The great advantages in having it without springs to retard introduction of holder, and in having it closed flat and snug, will be appreciated by those who have experienced the drawbacks of other styles. When swinging the glass open or shut, pressure should be kept *toward the hinge*, as in Fig. 6, this will prevent twisting. Fig. 1 shows camera with Eureka Adjuster and Eastman-Walker Roll Holder attached, and Fig. 10 with Eureka Double Plate Holder in place.

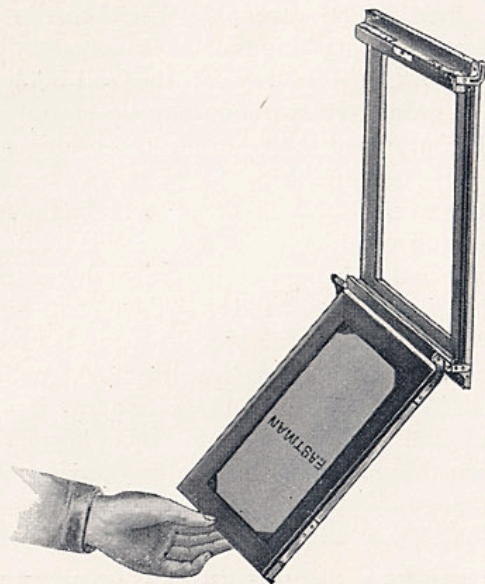


Fig. 6.

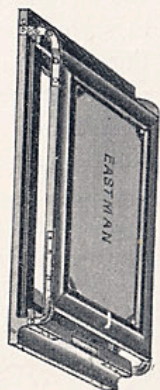


Fig. 7.

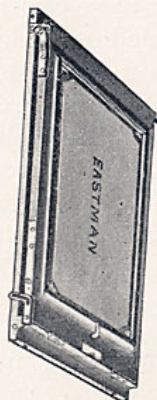


Fig. 8.

The Eureka Double Plate Holder.

Supplies the demand for a light, strong, substantial and light-tight double plate holder, at a low price. It is only $\frac{5}{8}$ of an inch thick, is made all in one piece, and is very convenient to fill—an important point for those who have to work in ill-lighted dark-rooms. The plates are both inserted through one slide-opening and locked into place by a simple bolt, as in Fig. 9.

The improved septum that has superseded the corrugated septum, formerly put in these holders, is flat, with flexible edges that fit the holder closely, thus rendering leakage of light impossible.

Price List of Eastman's Interchangeable View Cameras.

	Complete Camera, including Extension Bed, one extra Lens Board and one Double Holder	Extra Back and one Double Holder.	Double Holders, Book Form.	Double Holders, Eureka.	Eastman-Walker Roll-Holders, Model of '89.
4¼ x 5½	\$26 00	\$13 00	NOT MADE.	\$ 1 40	\$10 00
4¼ x 6½	28 00	14 00	"	1 40	10 00
5 x 7	32 00	16 00	\$ 2 50	1 50	12 50
5 x 8	34 00	17 00	2 50	1 60	12 50
6½ x 8½	36 00	18 00	4 20	2 00	16 00
8 x 10	40 00	20 00	6 00	2 40	20 00

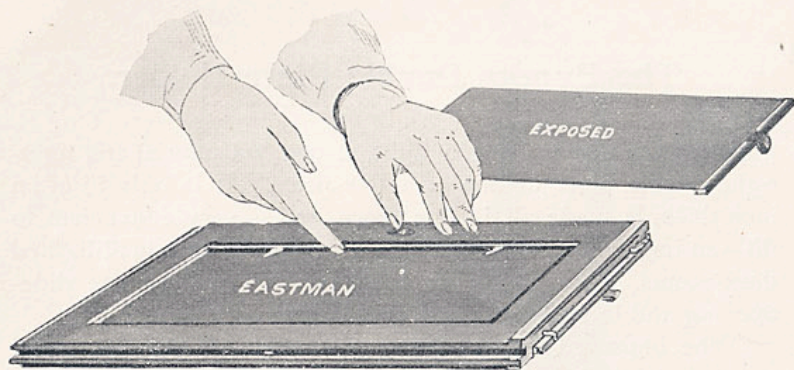


Fig. 9.

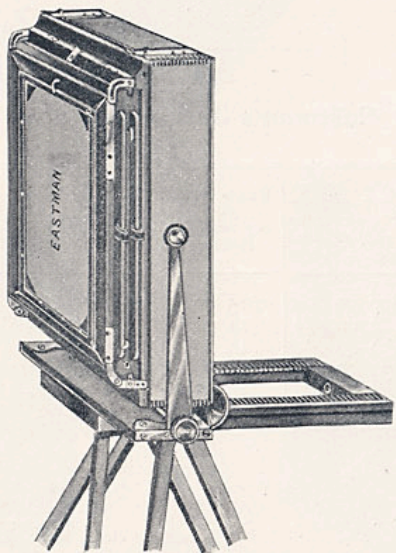


Fig. 10.

Complete Cameras have canvass carrying cases. Extra backs have wood carrying cases.

Cameras with hinged ground glass adjusters (see Figs. 4 and 5, or with Eureka adjusters, same price.

Book-Holders (English style) can be furnished only for the hinged adjusters (Figs. 4 and 5).

Eureka Holders can be furnished for either style adjusters. No charge for fitting roll-holders purchased with Cameras.

CAMERA SUNDRIES.

SIZE.	Canvas Carrying Cases.	Extra Lens Boards.	Ground Glass.	Eureka or Hinged Adjusters with Double Holder.	Extra Slides for Double Holder.	Kits, any Opening.
4¼ x 5½.....	\$1 95	\$0 50	\$0 22	\$5 90	\$0 25	\$0 30
4¼ x 6½.....	2 10	50	33	6 65	30	30
5 x 7.....	2 40	50	34	7 50	35	35
5 x 8.....	2 55	60	40	8 00	35	35
6½ x 8½.....	2 70	60	45	8 75	40	35
8 x 10.....	3 00	70	68	9 90	50	40

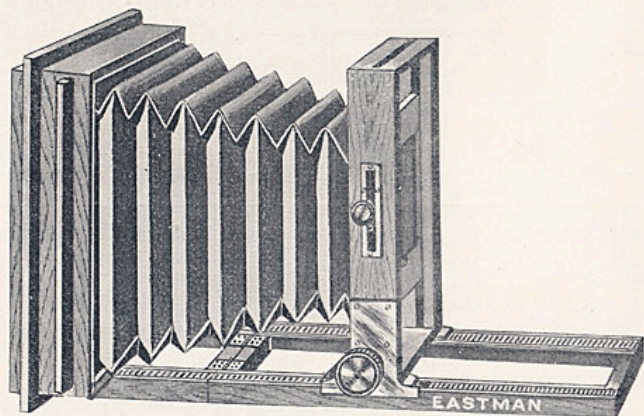
In ordering ground glass adjusters, specify whether Eureka or Hinged.

In ordering slides for dry plate holders, specify whether Eureka or Book form. If Eureka, state which slide is wanted, the wide or narrow.

EASTMAN'S

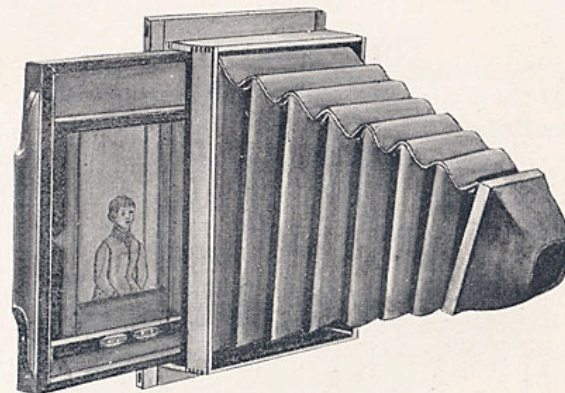
Daylight Enlarging Cameras.

Especially Designed for Use with Enlarging Easels and Bromide Paper.



These cameras are provided with fine quality cut rack and pinions, and are adjusted with special reference to smooth working and rigidity. The carrier is adjustable so that it will take any negative from $3\frac{1}{4} \times 4\frac{1}{4}$ inches, or smaller, up to and including 8×10 inches. The camera is built with especial reference to steadiness and is well finished.

8 x 10 Camera with Adjustable Carriers for 8 x 10 Negatives and under, price complete, - - - - - \$25 00



Window Box for Enlarging.

This box is the back end and bellows of the Eastman Enlarging Camera, and it is intended for use in connection with another camera.

Window box complete, with ground glass, bellows and adjustable carrier for negatives, $3\frac{1}{4} \times 4\frac{1}{4}$ to 8×10 , price, - \$12 50

Plano-Convex Condensers.

Mounted in wood with extra fine ground glass to fit Eastman's Enlarging Camera.

8 inch diameter, per pair,	-	-	-	-	-	\$28 50
10 " " " "	-	-	-	-	-	48 50
12 " " " "	-	-	-	-	-	70 00

Tripods.

The Kodak Tripod.

That the Kodaker who wishes to use his camera for other than hand work may have a tripod which, like his Kodak, is compact, reliable and convenient, we have devised the "Kodak Tripod." The length extended is 55½ inches, while folded it is only 15⅞ inches, and the weight 2 lbs. 3 oz.



Fig. 1. Tripod Folded.

It is made with three joints, thus allowing the legs to be folded to one-fourth of their extended length. (See Fig. 1.)

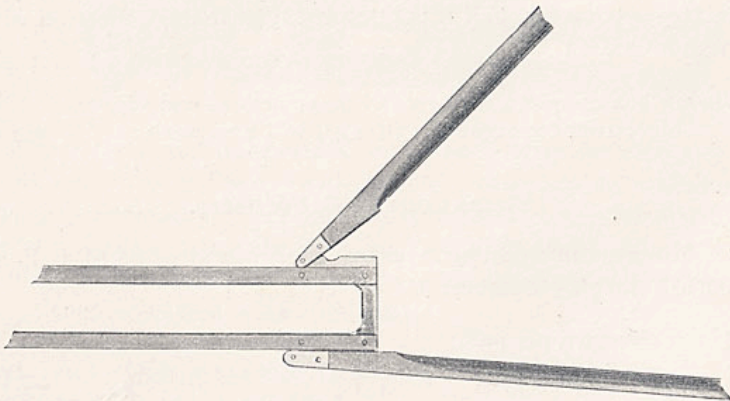


Fig. 2.

The upper section folds back upon the second, as shown in Fig. 2, and the third section slides into the second, a thumb clamp allowing it to be rigidly fixed (see Fig. 3) at any point, thus per-

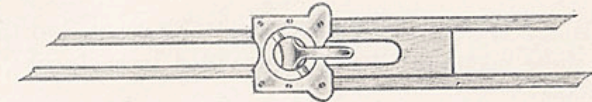


Fig. 3.

mitting the legs to be easily lengthened or shortened. The fourth or lower section folds into the third. The Kodak Tripod is quickly set up (see Fig. 4), is very rigid, and can be moved by grasping the upper section of any one of the legs, as they are so made that when in the ordinary position for use a clip prevents their coming loose from the lugs, no matter how tightly they may be grasped. The top is made in two styles, with rigid or with folding lugs. The top having folding lugs has also a recess for storing the screw, and can be made perfectly flat so as to carry in the pocket without discomfort. Kodak tripods are made of the best seasoned cherry, with brass trimmings.

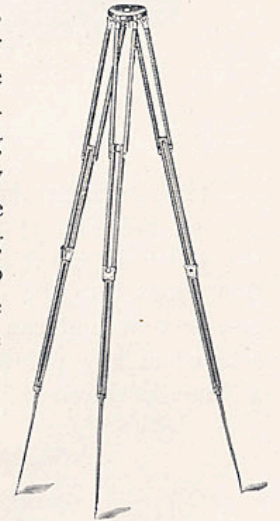


Fig. 4.

Prices of Kodak Tripods.

No. 1 Kodak tripod, with folding lugs,	-	-	-	-	\$5 00
No. 2 Kodak tripod, with solid lugs,	-	-	-	-	4 00
Leather carrying case with pocket for top,	-	-	-	-	3 00
Leather carrying case without pocket,	-	-	-	-	2 00

The Eastman Tripod.

This new tripod is made with two joints, and will thus fold up into three sections. Length extended is 56 inches, folded, 21 $\frac{3}{4}$ inches.

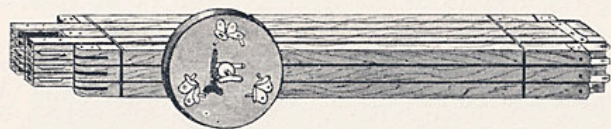


Fig. 1. Tripod Folded.

It is so made that the upper section folds back upon the second (see Fig. 2) and the third or lower section slides into the second section and can be secured at any point by a clamp as shown in Fig. 3.

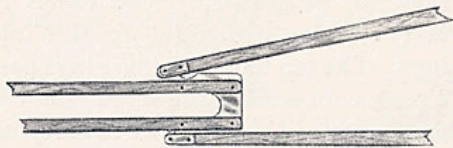


Fig. 2.

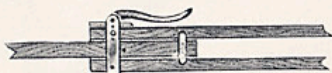


Fig. 3.

The "Eastman" tripods are made in three sizes and can be furnished in either spruce or maple. When in a position for

use (see Fig. 4), the legs are held in position by clips that give the tripod great rigidity, and it can be moved by grasping the upper section of any one of the legs, as the clips make it impossible for the lugs to come loose from the top. Best brass trimmings, first class finish, detachable head, thoroughly seasoned wood.

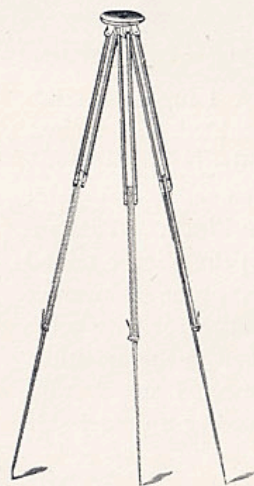


Fig. 4.

Prices of Eastman Tripods.

No. 1 Spruce, for cameras up to 6 $\frac{1}{2}$ x 8 $\frac{1}{2}$, wt. 1 lb. 10 oz.	- - -	\$3 00
No. 1 Maple, for cameras up to 6 $\frac{1}{2}$ x 8 $\frac{1}{2}$, wt. 2 lb. 2 oz.	- - -	3 00
No. 2 Spruce, for cameras up to 11 x 14, wt. 2 lb. 6 oz.	- - -	3 50
No. 2 Maple, for cameras up to 11 x 14, wt. 3 lb. 3 oz.	- - -	3 50
No. 3 Maple, for cameras up to 11 x 14, 6 in. head, wt. 3 lb. 5 oz.	- - -	4 00
No. 3 Spruce, for cameras up to 11 x 14, 6 in. head, wt. 2 lb. 8 oz.	- - -	4 00

NOTE.—When kind of wood is not specified, we will furnish in maple.

The Victor Tripod.

This tripod is not so compact as the Kodak tripod or the Eastman, but is equally well made, is easily adjusted, and is



Fig. 1. Tripod Folded.

very strong and steady. Length, extended, 56 inches; length, folded, 29½ inches. The lower sections slide into the upper and can be securely fastened at any point by a clamp, as shown in Fig. 2. When set up for use (see Fig. 3) the Victor tripod can be moved by grasping one or more of the legs, as it is impossible for it to come loose from the head when in this position. Made of the best seasoned wood, with brass trimmings, and having a detachable head.



Fig. 2.

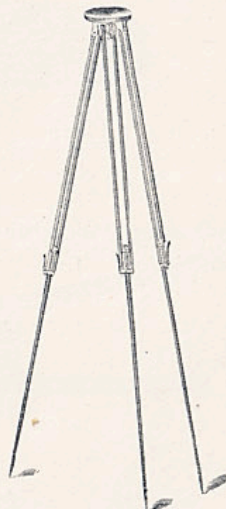


Fig. 3.

Prices of Victor Tripods.

No. 1 Spruce, for cameras up to 6½ x 8½, wt. 1 lb. 11 oz.	-	\$2 00
No. 1 Maple, for cameras up to 6½ x 8½, wt. 2 lb. 3 oz.	-	2 00
No. 2 Spruce, for cameras up to 11 x 14, wt. 2 lb. 6 oz.	-	2 50
No. 2 Maple, for cameras up to 11 x 14, wt. 3 lb. 3 oz.	-	2 50

NOTE.—When kind of wood is not specified we will furnish in Maple.

The Genesee Tripod.

We have applied a well known folding principle to a tripod having the improved detachable safety head which characterizes

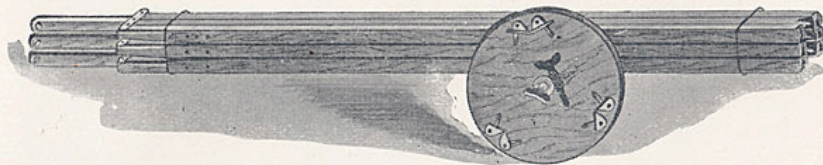


Fig. 1.

all of the foregoing tripods. Like our other tripods it can be moved by grasping the upper section of the legs without danger of their coming loose from the head. Made in either maple or spruce. Perfectly seasoned wood and brass trimmings. Fig. 1 shows the tripod folded and head detached; Fig. 2 shows the joint, and Fig. 3 the tripod set up ready for use. Length, extended, 56 inches; length, folded 31½ inches.

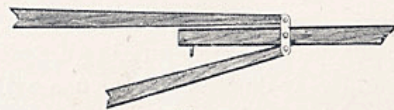


Fig. 2.

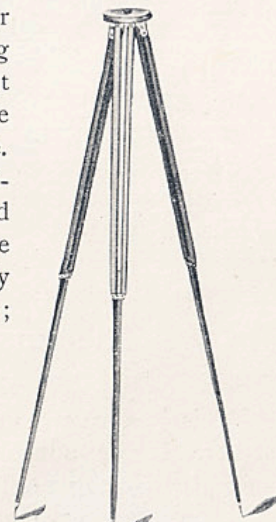
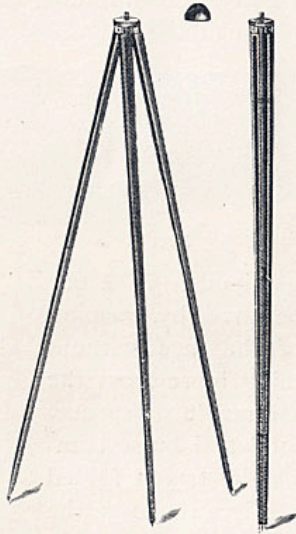


Fig. 3.

Prices of Genesee Tripod.

No. 1 Spruce, for cameras up to 11 x 14, wt. 2 lbs. 7 oz.	-	-	\$2 00
No. 1 Maple, for cameras up to 11 x 14, wt. 3 lbs. 4 oz.	-	-	2 00

NOTE.—When kind of wood is not specified we will furnish in Maple.



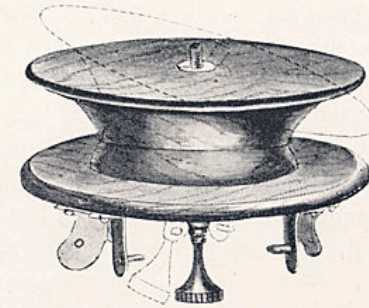
The Improved Staff Tripod.

This is a very convenient Tripod for 4 x 5 cameras or smaller. It does not fold but closes together, forming a staff or cane. It is strong and light and very convenient for use with a small camera on country rambles. Made of best seasoned maple, with accurately milled brass fittings. Length 48 inches, weight 17 ounces.

Price of Improved Staff Tripod,	- - - - -	\$1 50
Special Adjustable Jr. Head Extra,	- - - - -	1 00

The "Adjustable" Tripod Head.

Our new "Adjustable" Tripod Head can be used on any of the foregoing tripods, (except the Staff, for which we have a specially constructed adjustable head, and the Eastman No. 3.) As shown by the dotted lines in the accompanying illustration, it has a wide range of adjustment and can be used to tilt the camera in any direction, or to make a level bed for the camera



where uneven ground makes it difficult to adjust the tripod to a nicety. A set screw, operated from beneath, secures the head firmly in any position.

The "Adjustable" head is attached to the tripod legs in the same manner as the regular heads used on the Kodak, Eastman, Victor and Genesee tripods, and is interchangeable with them. It retains the feature which permits the tripod to be moved, when in position for use, without danger of becoming detached from the head.

Price List "Adjustable" Tripod Head.

The "Adjustable" Tripod heads can be furnished as follows :

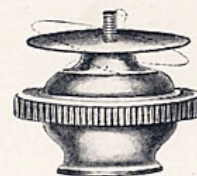
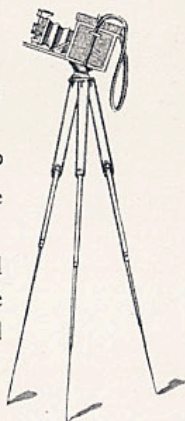
- No. 1. For the Eastman Tripod No. 1, Victor
No. 1, - - - - - \$1 25
- No. 2. For the Eastman Tripod, No. 2, Victor
No. 2, Kodak Tripod or the Genesee, - 1 50

In ordering always state what tripod the adjustable top is to be used with.

Any of the foregoing Tripods (except Staff and Eastman No. 3), may be ordered with the adjustable head and *without* the regular head at the following prices :

Eastman No. 1,	- - - - -	\$3 75
Eastman No. 2,	- - - - -	4 30
*Kodak No. 2,	- - - - -	4 80
Victor No. 1,	- - - - -	2 75
Victor No. 2,	- - - - -	3 30
Genesee,	- - - - -	2 80

*We do not furnish the "Adjustable" head with folding lugs.



The "Adjustable, Jr." Tripod Head.

The "Adjustable Jr." has been devised for use on the Staff tripod and on tripods of other makes on which the "Adjustable" could not be used because of its attaching directly to the legs. The "Adjustable Jr." is made entirely of brass and fastens to the regular tripod head in precisely the same manner that a camera is attached, and in turn the camera is screwed to it.

It can be adjusted to any angle, as shown by the dotted lines in the cut, and is quickly and securely fastened by turning the milled rim. With each "Adjustable Jr." head we furnish a tripod screw so that it can be fitted to any ordinary tripod top.

No. 1, "Adjustable, Jr.," for cameras up to 4 x 5.	Can be used on Staff Tripod,	- - - - -	\$1 00
No. 2, "Adjustable Jr.," for Cameras up to 5 x 8, fits any ordinary Tripod,	- - - - -	- - - - -	1 50

In ordering always state what camera the head is to be used with.

Photographic Papers.

Permanent Bromide Paper.

Permanent Bromide Paper is a pure photographic paper, coated with a sensitive compound, composed principally of pure bromide of silver and white gelatine. Only enough gelatine is used to bind the sensitive silver salt on to the paper, and the bromide of silver is of such a nature as to give a pure black tone when exposed to light for a brief period of time, and then developed with a solution of oxalate of potash and iron the unexposed portions of the paper remaining perfectly white.

The paper keeps both before and after exposure and the developed prints, when carefully fixed and washed, are believed to be as permanent as the bare paper itself.

Its Uses.—A photographic paper having the above qualities, has long been sought, and its uses are almost unlimited in their variety. For making contact prints from negatives of all kinds, portraits, views, interiors, architectural and mechanical subjects, it is unsurpassed, either for quickness of execution or for artistic effect. The pure, soft black and gray tones and steel engraving effects obtained, and the absence of the conventional glossy surface, usual in photographs, are points in its favor that are appreciated by those who are tired of the ordinary photographic prints.

For copying patent office drawings, engineers' and architects' plans, it surpasses all other processes in quickness and quality of result. It is used by botanists for making copies of leaves, etc., by contact printing.

It is invaluable for use in meteorological and astronomical recording instruments. In making quick proofs from wet negatives, it enables the photographer to see his result without waiting for his negative to dry.

But perhaps the most important application of Permanent Bromide Paper is to the process of enlarging, i. e., the making of large positives from small negatives.

Owing to its great sensitiveness, it will receive and retain an image projected upon it by means of an apparatus similar in principle to a

magic lantern, thus enabling the photographer to make prints of any size from small negatives. Such prints present the effect of a fine crayon drawing, at the same time retaining the photographic fidelity of likeness and detail.

As the merits of this process of enlarging come to be more fully understood, it will, we believe, take the place, almost entirely, of large direct photographs.

The comparative ease of making a small negative, as compared with the risk, trouble and expense involved in making a large one, is great, and the making of an enlarged permanent bromide print from a small negative, is quite as certain and easy an operation as the making of a large direct print from a large negative.

The Permanency of Permanent Bromide Prints.

What we Claim is, that a print made as directed, on any of our Bromide Papers, will retain its image indefinitely without fading, even if exposed to bright sunlight for a long period of time. In other words, that a print on Eastman's Bromide Papers, when properly made, is **PERMANENT** in the full sense of the word as applied to anything that is not absolutely indestructible.

NEW YORK, July 6, 1894.

EASTMAN KODAK COMPANY:

Gentlemen:—I would like to recall when I first began to use your Bromide paper—something less than a century ago—since which time I have continued its use. I have demonstrated:

First—The most remarkable *uniformity* in working. I do not recall the loss of a single sheet of the paper *from any defect in the paper* in the last four or five years.

Second—*Simplicity* in the working of the papers and formulas.

Third—*Absolute Permanency*. I have not in many years seen a print change color or fade in the slightest degree, and I do not hesitate to guarantee my customers of the absolute imperishability of the prints. That my own family portraits are on the Eastman Bromide Paper indicates pretty clearly my faith in it. Long may you wave.

Yours very truly,

(Signed)

GEO. G. ROCKWOOD.

ELMIRA, N. Y., July 13, 1894.

EASTMAN KODAK COMPANY:

Rochester, N. Y.

Gentlemen:—We have used your Bromide Paper in large quantities and believe it is the most permanent of any paper which is used at the present time for making prints.

Yours truly,

ELMIRA PORTRAIT CO.

Keeping Qualities.

We do not recommend that any sensitized photographic product be kept a long time before using. We do claim, however, that no product of this nature will keep before exposure in all climates as will our Permanent Bromide Paper.

MATTAPAN CAMERA CLUB,
MATTAPAN, MASS., March 13, 1893.

THE EASTMAN DRY PLATE & FILM CO.:

Four years ago I bought a dozen sheets of $6\frac{1}{2} \times 8\frac{1}{2}$ Bromide paper of which only a few were used at the time, the rest mysteriously disappeared during my removal from Mattapan to Milton four years ago. As I have had plenty of leisure time lately I managed to clear up an immense accumulation of rubbish, amongst which I was surprised to find the lost paper. Still greater was my surprise that after four years, the paper was as fresh as new, having not turned in color nor lost any of its strength.

(Signed,) E. SONNENBRODT, *Secretary.*

Bernice Pauahi Bishop Museum of Polynesian
Ethnology and Natural History.

HONOLULU, HAWAIIAN ISLANDS, NOV. 15 1892.

THE EASTMAN CO.:

Without waiting for your answer to my last, I shall be obliged to order forty-two (42) dozen 10 x 12 Bromide paper.

I found on my shelves part of a 24 in. roll which I brought here four years ago, and in spite of the tropical climate, it is in splendid condition as you may see by the enclosed print. The outer wrapper is off the box but I suppose it to be C.

(Signed,) WM. T. BRIGHAM, *Curator.*

CHICAGO, Mar. 14, 1894.

EASTMAN KODAK CO.,

Rochester, N. Y.

Dear Sirs:—Having just opened some boxes containing some old personal matters I found a package of Bromide B.—emulsion No. 309* which had never been opened. This must be several years old and I had the curiosity to test it on a rather good negative portrait, to see if it was of any account at all. To my surprise it proved to be equal in all respects, save sensitiveness, to any you ever made. It is rather slow, but the whites are clear white and the blacks velvety and beautiful. I have made ten superb prints with it and think this speaks well for its keeping qualities.

Yours truly, W. H. WALMSLEY.

*Emulsion No. 309 was made early in 1889. The paper was thus over five years old.—
EASTMAN KODAK CO.

Soft Prints.

Some photographers make a mistake in expecting one grade of paper to work with all kinds of negatives. To secure the best results the paper should be suited to the negative.

STRONG PAPER FOR SOFT NEGATIVES.

SOFT PAPER FOR STRONG NEGATIVES.

Our **Standard** paper is designed for thin, quick printing negatives, and will produce from them the finest possible results—rich, brilliant prints, with a breadth of half tone that cannot be equaled by any other make.

Our **Extra Quick** paper is designed for printing from strong negatives, and should always be used where the Standard gives hard effects. Every photographer desirous of doing the best work should keep both grades in stock. The prices are the same.

Prices of Eastman's Permanent Bromide Paper.

(LABEL REGISTERED, 1885.)

“A,” “B” OR “C,” STANDARD OR EXTRA QUICK.

CUT SHEETS.			
SIZE.	PER DOZ.	PER DOZ.	
$3\frac{1}{4} \times 4\frac{1}{4}$	\$0 25	16 x 20	6 00
4 x 5	40	17 x 20	6 40
$4\frac{1}{4} \times 5\frac{1}{2}$	50	18 x 22	7 50
$4\frac{1}{4} \times 6\frac{1}{2}$	55	20 x 24	9 00
5 x 7	65	22 x 27	11 20
5 x 8	75	24 x 30	13 50
$6\frac{1}{2} \times 8\frac{1}{2}$	1 10	25 x 30	14 00
8 x 10	1 50	24 x 36	16 00
10 x 12	2 25	30 x 40	22 50
11 x 14	3 00	40 x 60	45 00
14 x 17	\$4 50	40 x 72	54 00

MADE IN THREE GRADES:

“A,” Thin Smooth. “B,” Heavy Smooth. “C,” Heavy Rough.

OTHER SIZES IN PROPORTION.

If ordered in packages of less than one dozen, an extra charge of 25 cents will be made for packing.

IN ROLLS OR ON PATENT SPOOLS FOR ENLARGING EASELS.

10 inches wide,	\$0 56 per yard.	22 inches wide,	\$1 24 per yard.
11 “ “	62 “ “	24 “ “	1 35 “ “
12 “ “	68 “ “	25 “ “	1 40 “ “
14 “ “	79 “ “	30 “ “	1 68 “ “
16 “ “	90 “ “	31 “ “	1 75 “ “
18 “ “	1 00 “ “	41 “ “	2 30 “ “
20 “ “	1 12 “ “		

NOT LESS THAN TEN YARDS ON A SPOOL

Eastman's Enameled Bromide Paper.

Prints on Eastman's Enameled Bromide Paper when untuned combine the soft effect of a platinum or bromide tone with a highly enameled surface. This paper has a slightly pink tint which especially commends it to those who object to the coldness of an ordinary bromide tone.

Prints on Eastman's Enameled Bromide Paper when toned with the Hypo toning bath given further on and dried on ferrotype plates are in no wise inferior to the best aristo prints in richness of tone and depth of detail and gloss, hence enlargements made in this way from good negatives are fully equal to contact prints and require no finishing.

By using this paper photographers who have heretofore been neglecting large work can increase their business and their profits.

Eastman's Enameled Bromide paper is developed and fixed in exactly the same manner as Permanent Bromide Paper.

Two Grades of Enameled Bromide.

"Hard" and "Soft."

To get the most brilliant prints with this paper photographers should always use "Hard" Enameled Bromide for printing from thin or soft negatives, and "Soft" Enameled Bromide for strong or harsh negatives. By following this rule first-class enlargements can be obtained from negatives that do not yield as good contact prints.

Prices same as Permanent Bromide Paper. See page 119. Made in two weights, heavy and light. This paper cannot be furnished wider than 35 inches. The thin paper cannot be furnished over 26 inches wide.

Eastman's Platino-Bromide Paper.

Eastman's Platino-Bromide is a new argentic bromide paper, giving soft, rich effects, velvety blacks, absolutely pure whites, and having a dead surface like platinum. Unlike platinum paper, however, it will keep before and after exposure and can be printed by lamplight. Pictures made on it are permanent as the paper itself.

Any Photographer, professional or amateur, who understands working bromide paper, has nothing to learn in order to handle Platino-Bromide successfully. The processes are exactly the same. It can be developed with the formula recommended by us for Eastman's Standard Bromide paper, or with any other good developer.

Prices of Eastman's Platino-Bromide Paper.

In packages of one dozen or on patent spools, same price as Permanent Bromide paper. See page 119. "A" or "C" in sizes up to 11 x 14; 12 x 15 or larger, "C" only.

Price List Platino-Bromide in Gross Lots. "A."

	LIST PRICE, PER GROSS.
Cabinets (3 $\frac{3}{4}$ x 5 $\frac{1}{2}$ to 4 x 6)	\$4 00
Paris Panel (5 $\frac{1}{2}$ x 7 $\frac{3}{4}$)	6 00
6 $\frac{1}{2}$ x 8 $\frac{1}{2}$	8 80
7 x 9	9 50
8 x 10	12 00
Half gross package 25 cents extra.	

Eureka Bromide Paper.

A New Bromide Paper, especially adapted for Copying, Contact Printing and Enlarging with Artificial Light.

Prices of Eureka Bromide Paper—No. 1, 2 or 3.

CUT SHEETS.

SIZE.	PRICE PER DOZ.	SIZE.	PRICE PER DOZ.
3¼ x 4¼	\$ 15	12 x 15	\$2 00
4 x 5	25	14 x 17	2 70
4¼ x 5½	30	16 x 20	3 60
4¼ x 6¼	33	17 x 20	3 85
4¾ x 6½	35	18 x 22	4 50
5 x 7	40	20 x 24	5 50
5 x 7½	42	22 x 27	7 00
5 x 8	45	24 x 30	8 25
6¼ x 8½	65	25 x 30	8 50
8 x 10	90	24 x 36	10 00
10 x 12	1 35	30 x 40	13 50
10 x 14	1 60	40 x 60	27 00
11 x 14	1 80	40 x 72	32 40

MADE IN THREE GRADES:

No. 1, Thin Smooth. No. 2, Heavy Smooth. No. 3, Heavy Rough.

OTHER SIZES IN PROPORTION.

If ordered in packages of less than one dozen, an extra charge of 25 cents will be made for packing.

IN ROLLS OR ON PATENT SPOOLS FOR ENLARGING EASELS.

10 inches wide	\$0 33 per yard	20 inches wide	\$0 67 per yard.
11	37	22	74
12	40	24	80
14	47	25	84
16	54	30	1 00
18	60	31	1 05
		41	1 35

Not less than ten yards on a spool.

Eureka Enameled Bromide Paper.

MADE IN TWO GRADES—"THIN" AND "HEAVY."

This paper is of the same quality as our Eureka Bromide but is coated on paper having an enameled surface, giving a beautiful glossy finish. Especially adapted to making enlargements by artificial light.

Eureka Enameled Price List—"Thin" or "Heavy."

CUT SHEETS.

3¼ x 4¼	\$0 15	12 x 15	\$2 00
4 x 5	25	14 x 17	2 70
4¼ x 5½	30	16 x 20	3 60
4¼ x 6¼	33	17 x 20	3 85
4¾ x 6½	35	18 x 22	4 50
5 x 7	40	20 x 24	5 50
5 x 7½	42	22 x 27	7 00
5 x 8	45	24 x 30	8 25
6¼ x 8½	65	25 x 30	8 50
8 x 10	90	24 x 36	10 00
10 x 12	1 35	30 x 40	13 50
10 x 14	1 60	35 X 50	19 70
11 x 14	1 80	35 X 60	23 65

Other sizes in proportion.

If ordered in packages of less than one dozen, an extra charge of 25 cents will be made for packing.

IN ROLLS OR ON PATENT SPOOLS FOR ENLARGING EASELS.

10 inches wide,	\$0 33 per yard	20 inches wide,	\$0 67 per yard
11	37	22	74
12	40	24	80
14	47	25	84
16	54	26	87
18	60	36	1 20

Not less than ten yards on a spool.

The "Thin" paper cannot be furnished over 26 inches wide.

Bromide Copying Paper.

For Copying Drawings, Plans, Etc.

This paper is similar to Permanent Bromide Paper, being coated with the same sensitive compound, and requires the same treatment in exposure and development. The paper itself is not genuine photographic paper, and is not, therefore, suitable for photographic work.

CUT SHEETS.

SIZE.	PRICE PER DOZ.	SIZE.	PRICE PER DOZ.
3¼ x 4¼	\$0 13	12 x 15	\$ 1 68
4 x 5	20	14 x 17	2 25
4¼ x 5½	25	16 x 20	3 00
4¼ x 6½	28	17 x 20	3 20
4¾ x 6½	30	18 x 22	3 75
5 x 7	33	20 x 24	4 50
5 x 7½	35	22 x 27	5 63
5 x 8	38	24 x 30	6 75
6½ x 8½	55	25 x 30	7 00
8 x 10	75	24 x 36	8 00
10 x 12	1 13	30 x 40	11 25
10 x 14	1 33	40 x 60	22 50
11 x 14	1 50	40 x 80	30 00

Other sizes in proportion.

If ordering in packages of less than one dozen, an extra charge of 25 cents will be made for packing.

IN ROLLS.

Width	Price per yard
10 inches wide	28 cts. per yard.
11 "	31 " " "
12 "	34 " " "
14 "	40 " " "
16 "	45 " " "
18 "	50 " " "
20 "	56 " " "
22 "	62 " " "
24 "	68 " " "
25 "	70 " " "
30 "	84 " " "
31 "	88 " " "
41 "	116 " " "

Not less than ten yards on a spool.

Eastman's Transferotype Paper.

For Bromide of Silver Positives, transferable to Opal Glass, Placques, Lantern Slides, Transparencies, etc. Also for Glacé Prints.

Contact or enlarged prints are made upon this paper in precisely the same manner as upon the well known "Permanent Bromide Paper" (the same emulsion being used for both). By this process opals, window and lantern transparencies can be made with less trouble and cost than by any known process.

Prices of Eastman's Transferotype Paper.

CUT SHEETS.

SIZE.	PER DOZ.	SIZE.	PER DOZ.	SIZE.	PER DOZ.
3¼ x 4¼	\$0 25	6½ x 8½	\$1 10	17 x 20	\$6 40
4 x 5	40	8 x 10	1 50	18 x 22	7 50
4¼ x 5½	50	10 x 12	2 25	20 x 24	9 00
4¼ x 6½	55	10 x 14	2 65	22 x 27	11 25
4¾ x 6½	60	11 x 14	3 00	24 x 30	13 50
5 x 7	65	12 x 15	3 35	25 x 30	14 00
5 x 7½	70	14 x 17	4 50	24 x 36	16 00
5 x 8	75	16 x 20	6 00	30 x 40	22 50

SPECIAL SIZES FOR PLACQUES, TILES, ETC.

SIZE.	PER DOZ.	SIZE.	PER DOZ.	SIZE.	PER DOZ.
4 x 4	\$0 35	6 x 6	\$0 75	10 x 10	\$2 00
5 x 5	50	8 x 8	1 30	12 x 12	3 00

OTHER SIZES IN PROPORTION.

If ordered in packages of less than one dozen, an extra charge of 25 cents will be made for packing.

Prices of Opal Glass.

SELECTED AND FINE GROUND ON ONE SIDE.

SIZE.	PER DOZ. EA.	SIZE.	PER DOZ. EA.	SIZE.	PER DOZ. EA.
3¼ x 4¼	\$0 60 \$0 05	5 x 8	\$1 44 \$0 12	4 x 4	\$0 60 \$0 05
4 x 5	72 06	6½ x 8½	2 04 17	5 x 5	96 08
4¼ x 6½	1 08 09	8 x 10	2 88 24	6 x 6	1 32 11
5 x 7	1 20 10	10 x 12	4 32 36	8 x 8	2 40 20
				10 x 10	3 60 30
				12 x 12	5 40 45

Price of Beveled Opal Glass for Transferotypes.

SIZE.	EACH.	SIZE.	EACH.
4 x 5	\$0 20	6½ x 8½	\$0 50
4 x 6	25	8 x 10	75
4¼ x 6½	30	10 x 12	1 20
5 x 7	35	10 x 14	1 65

Eastman's Solio.

A Rapid Printing-Out Paper.

Eastman's Solio is a gelatino-chloride paper, combining rich, soft effects, delicate tints, and great depth of detail with permanence and ease of working. Absolute reliability and the perfect evenness of the emulsions have given Solio a world wide reputation.

Solio gives beautiful results when used with either the separate or combined baths, and has a range of tone from the warmest red to steel gray.

Solio will neither curl, crack, peel or blister. It requires no special handling, and *the negatives do not have to be made to suit the paper.*

Wherever Solio has been given a practical test it has made a place for itself.

Price List Solio Paper.

SIZE.	DOZ.	HALF GROSS.	GROSS.
3 x 8, (For 2 No. 1 Kodaks),	\$0 35		\$3 00
3 $\frac{3}{4}$ x 9 $\frac{3}{8}$, (For 2 No. 2 Kodaks),	50		4 00
2 $\frac{3}{4}$ x 3 $\frac{3}{4}$, "A Kodak,"	15		1 25
3 $\frac{1}{2}$ x 3 $\frac{1}{2}$, No. 2 Bullet,	15		1 25
3 $\frac{1}{2}$ x 4, "B Kodak,"	20		1 60
3 $\frac{1}{4}$ x 4 $\frac{1}{4}$,	20		1 60
4 x 5,	25		2 00
4 $\frac{1}{4}$ x 5 $\frac{1}{4}$,	25		2 00
2 $\frac{1}{4}$ x 3 $\frac{3}{4}$, Carte de Visite,	15		1 10
3 x 4, Mantello,	15		1 25
*3 $\frac{3}{8}$ x 5 $\frac{1}{2}$, Cabinet,	25		2 00
3 $\frac{3}{8}$ x 5 $\frac{7}{8}$,	25		2 00
4 x 6,	25		2 00
5 x 7,	40	1 85	3 50
5 x 8,	45	2 10	4 00
5 $\frac{1}{2}$ x 7 $\frac{3}{4}$, Paris Panel,	50	2 65	5 00
6 $\frac{1}{2}$ x 8 $\frac{1}{2}$,	65	3 15	6 00
7 x 9,	75	3 70	7 00
8 x 10,	90	4 20	8 00
10 x 12,		1 25	6 30
11 x 14,		1 50	7 90
14 x 17,		2 25	12 60
16 x 20,		3 00	16 80
18 x 22,		1 $\frac{1}{2}$ doz. \$2 00	4 00
20 x 24,		1 $\frac{1}{2}$ doz. 2 25	4 00
			23 00
			44 00

*STANDARD CABINET SIZE.—This size will be furnished on all orders for "Cabinets" when no special size is mentioned.

Seconds.

A limited quantity of Standard Cabinet size Seconds at \$1.25 per gross, and 4 x 5 (trimmed) Seconds at 75 cents per hundred sheets.

Concentrated toning and fixing solution sufficient for toning 100 cabinets, giving any tone and clear whites, 50 cents per 8 oz. bottle. \$2.00 per $\frac{1}{2}$ gallon. \$4.00 per gallon.

Solio Thermometers, special scale, extra sensitive and accurate, by mail, prepaid, 40 cents each.

Karsak Paper.

(Gelatino-Chloride.)

"The Cheapest Good Paper."

Price List.

SIZE.	DOZ.	HALF GROSS.	GROSS.
3¼ x 4¼	\$ 20		\$1 20
4 x 5	25		1 50
2¼ x 3¼, Carte de Viste,	15		75
*3 x 4, Mantello,	15		1 00
3¾ x 5½, Cabinet,	25		1 35
3¾ x 5½,	25		1 35
4 x 6,	25		1 50
5 x 7,	35	1 40	2 65
5 x 8,	40	1 60	3 00
5½ x 7¾, Paris Panel,	45	1 80	3 40
6 x 8,	50	2 00	3 75
6½ x 8½	55	2 15	4 10
7 x 9,	65	2 75	5 25
7½ x 9½,	70	3 05	5 75
8 x 10,	75	3 15	6 00
10 x 12,	1 10	4 75	9 00
11 x 14,	1 25	5 90	11 20
14 x 17,	1 85	9 50	18 00
16 x 20,	2 50	12 60	24 00
18 x 22,	3 00	15 75	30 00
20 x 24,	3 09	17 35	33 00
		½ doz. \$1 75	
		½ doz. 2 00	

*STANDARD CABINET SIZE.—This size will be furnished on all orders for "Cabinets" when no special size is mentioned.

Seconds.

A limited quantity of Standard Cabinet size (trimmed) Seconds at 80 cents per gross.

Ferro-Prussiate Paper.

SIZE.	PER PKG. 2 DOZ. SHEETS.	SIZE.	PER PKG. 2 DOZ. SHEETS.
For No. 1 Kodak, -	\$0 15	3¼ x 4¼,	\$0 16
" A Kodak, -	15	4 x 5,	20
" No. 2 Kodak, -	20	5 x 7,	35
" B Kodak, -	16	6½ x 8½	56

Western Collodion Paper.

Western Collodion is superior to other collodion printing-out paper in ease of manipulation and depth of detail. It is free from metallic spots, prints quickly and brilliantly and has a pliable surface.

Price List.

SIZE.	DOZ.	HALF GROSS.	GROSS.
3 x 8, (For 2 No. 1 Kodaks),	\$0 35		\$3 00
3¾ x 9¾, (For 2 No. 2 Kodaks),	50		4 00
2¼ x 3¼, "A Kodak,"	15		1 25
3½ x 3½, (No. 2 Bullet),	15		1 25
3½ x 4, "B Kodak,"	20		1 60
3¼ x 4¼,	20		1 60
4 x 5,	25		2 00
4¼ x 5½,	25		2 00
2¼ x 3¼, Carte de Visite,	15		1 10
3 x 4, Mantello,	15		1 25
*3¾ x 5½, Cabinet,	25		2 00
3¾ x 5½,	25		2 00
4 x 6,	25		2 00
5 x 7,	40	1 85	3 50
5 x 8,	45	2 10	4 00
5½ x 7¾, Paris panel,	50	2 65	5 00
6½ x 8½,	65	3 15	6 00
7 x 9,	75	3 70	7 00
8 x 10,	90	4 20	8 00
10 x 12,	1 25	6 30	12 00
11 x 14,	1 50	7 90	15 00
14 x 17,	2 25	12 60	24 00
16 x 20,	3 00	16 80	32 00
18 x 22,	4 00	21 00	40 00
20 x 24,	4 00	23 00	44 00
	½ doz. \$2 00		
	½ doz. 2 25		

*STANDARD CABINET SIZE.—This size will be furnished on all orders for "Cabinets" when no special size is mentioned.

Seconds.

A limited quantity of Standard Cabinet size and 4 x 5 (trimmed) Seconds at \$1.00 per hundred sheets.

The Western Collodion price list is subject to a discount of 20 per cent. on all orders.

Eastman's Transparent Film.

Eastman's Transparent Film has rapidly superseded glass plates for the use of travelers, and indeed for out-door photography generally. A roll of film for 100 exposures can be carried in the pocket and weighs but a few ounces, while in quality it is equal to the best brands of plates on the market. It is very rapid, is free from bubbles and other imperfections and *it will not tear or frill.*

In July, 1893, we adopted our system of dating each package of film and since that time not a single case of "slow" film has come to our knowledge, and uniformly successful results have been obtained.

The new system is meeting with the approval of prominent users and dealers the world over. It has checked the tendency to keep film over from season to season and has thus reduced the number of complaints to a minimum.

In order to fully protect our customers, and make sure of their getting film not more than six months old when purchasing, *we now label each package with the date beyond which it will not be replaced in cases of deterioration.*

This system is proving perfectly satisfactory as customers can tell at a glance just how much time remains in which to use the film. After the date on the label, film should not be put to any important use without testing.

Film that is incapable of making good negatives will always be replaced free of charge, *provided it is returned to us prior to the date on the label.* But no film can be exchanged simply because it has become old on the customer's hands.

Eastman's Transparent Film.

On Patent Spools to Fit the Eastman-Walker Roll-Holder. (Patented May 5, 1885.)

SIZE.	24 Exposures.	48 Exposures.
3¼ in., 3¼ x 4¼ Exp.	\$1 00	\$2 00
4 " 4 x 5 "	1 50	3 00
4¼ " 4¼ x 6¼ "	2 00	4 00
4½ " 4½ x 7½ "	2 70	5 40
4¾ " 4¾ x 6½ "	2 25	4 50
5 " 5 x 8 "	3 00	6 00
6½ " 6½ x 8½ "	4 00	8 00
8 " 8 x 10 "	6 00	12 00

Spools for French and German Sizes.

SIZE.	24 Exposures.	48 Exposures.
9 cm., 9 x 12 cm.,	\$1 20	\$2 40
13 " 13 x 18 "	3 00	6 00
18 " 18 x 24 "	5 35	10 70

Add 1½ cents per inch for postage on 24 Exposure Spools, and 2½ cents per inch on 48 exposure spools if ordered by mail.

Kodak Spools.

No. 1,	2¼ inch circle,	100 Exposures,	\$2 50
" 1,	2½ " "	50 " "	1 25
" 2,	3½ " "	100 " "	4 25
" 2,	3½ " "	150 " "	6 35
" 2,	3½ " "	60 " "	2 50
" 3,	3¼ x 4¼,	60 " "	2 50
" 3,	3¼ x 4¼,	100 " "	4 25
" 3,	3¼ x 4¼,	250 " "	10 50
" 3, Jr.,	3¼ x 4¼,	60 " "	2 50
" 3,	3¼ x 4¼,	100 " "	4 25
" 4,	4 x 5,	24 " "	1 50
" 4,	4 x 5,	48 " "	3 00
" 4,	4 x 5,	100 " "	6 25
" 4,	4 x 5,	250 " "	15 50
" 4, Jr.,	4 x 5,	48 " "	3 00
" 4,	4 x 5,	100 " "	6 25
" 4, Folding,	4 x 5,	48 " "	3 00
" 4,	4 x 5,	100 " "	6 25
" 5,	5 x 7,	32 " "	4 00
" 5,	5 x 7,	54 " "	6 00
" 5,	5 x 7,	100 " "	11 00
" 6,	6½ x 8½,	24 " "	4 00
" 6,	6½ x 8½,	48 " "	8 00
A, "Daylight,"	2¼ x 3¼,	24 " "	75
A, "Ordinary,"	" "	24 " "	65
B, "Daylight,"	3½ x 4,	24 " "	1 10
B, "Ordinary,"	" "	24 " "	1 00
C, "Daylight,"	4 x 5,	24 " "	1 60
C, "Ordinary,"	" "	24 " "	1 50

Kodet Spools.

No. 4 Regular, 4 x 5, 48 Exposures,	\$3 00	No. 5 Folding, 5 x 7, 32 Exposures,	\$4 00
No. 4 Folding, 4 x 5, 48 " "	3 00	No. 5 " 5 x 7, 54 " "	6 00

In ordering Kodak or Kodet Spools always give the exact designation of the instrument.

Spools for Bullet and Bulls-Eye Cameras.

Light proof roll, 12 exposures, 3¼ x 3¼, for No. 2 Bullet or small Bulls-Eye,	60 cents.
" " " 18 " 3½ x 3½, " " 2 " "	90 "
" " " 12 " 4 x 5, " Bulls-Eye, " " "	90 "

Eastman's Dry Plates.

With new buildings, new special machinery and years of experience in the manufacture of sensitized products, we are now prepared to furnish the highest grades of dry plates. Before offering the new plates to our customers we spent months in exhaustive experiment that we might be assured of their not only equaling, but excelling, any plate now in the market in quality. Our plates are coated at the now famous "Kodak Park," away from the smoke and dirt of the city, enabling us to turn out an article that is free from the particles of dust that cause so much annoyance to other manufacturers who are less fortunate in the location of their factories.

They are made in three grades—Rapid, Extra Rapid and Double Coated Non-Halation.

The Extra Rapid or "Red Seal" are for general gallery use and for out-door work where extreme speed is necessary.

The Rapid or "Yellow Seal" give the best results for ordinary snap-shot and time exposure work out doors, and for indoor work where there is no danger of halation.

The Double Coated Non-Halation or "Green Seal" plates are for use where a window, mirror or some other bright object within range of the cameras makes a non-halation plate desirable. They are equal in speed to the Rapid.

Price Lists.

Eastman's Rapid and Extra Rapid Plates.

SIZE.	PRICE PER DOZ.	NO. OF DOZ. IN CASE.
3¼ x 4¼	\$ 0 45	36
4 x 5	65	30
4¼ x 5½	75	26
4¼ x 6½	90	30
4¾ x 6½	1 00	24
5 x 7	1 10	20
5 x 8	1 25	20
6½ x 8½	1 65	15
7 x 10	2 10	12
8 x 10	2 40	12
10 x 12	3 80	3
11 x 14	5 00	3
14 x 17	9 00	2
16 x 20	12 50	1½
17 x 20	13 00	1½
18 x 22	15 50	1½
20 x 24	18 50	1

Eastman's D. C. Non-Halation Plates.

SIZE.	PRICE PER DOZ.	NO. OF DOZ. IN CASE.
3¼ x 4¼	\$ 0 55	18
4 x 5	80	12
4¼ x 5½	95	12
4¼ x 6½	1 10	12
4¾ x 6½	1 20	12
5 x 7	1 40	12
5 x 8	1 55	12
6½ x 8½	2 10	8
7 x 10	2 65	6
8 x 10	3 00	6
10 x 12	4 75	2
11 x 14	6 25	2
14 x 17	11 25	2
16 x 20	15 65	1½
17 x 20	16 25	1½
18 x 22	19 40	1½
20 x 24	23 15	1

Transparency Plates.

It is a well established fact that it is impossible to make emulsions which give exactly the right tone and quality for transparencies with any degree of regularity. Not more than one in five or six of the emulsions which give perfect results for positives on paper will give the right tone by transmitted light on glass. For this reason manufacturers who make emulsions for lantern slide plates only, cannot obtain the desired uniformity. We are not handicapped in this way as we are enabled to select those emulsions which are especially suited for transparency plates from the large quantities of emulsion made by us for coating bromide paper. Our lantern slide plates are unequalled for brilliancy and tone.

Permanent Bromide Transparency Plates.

ON BEST ENGLISH GLASS.

SIZE.	PER DOZ.	SIZE.	PER DOZ.
*3¼ x 4	\$0 70	5 x 7	\$1 10
3¼ x 4¼	45	5 x 7½	1 25
4 x 5	65	5 x 8	1 25
4¼ x 5½	75	6½ x 8½	1 65
4¼ x 6½	90	8 x 10	2 40
4¾ x 6½	1 00	10 x 12	3 80

*Thin Crystal Glass. Extra charge if coated on ground glass.

Dark-Room Lamps.

Eastman's Orange Candle Lamp.



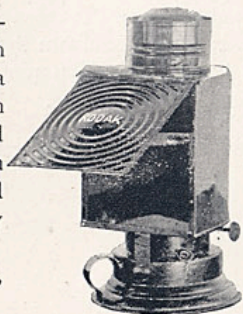
Eastman's Orange Candle Lamp is the lightest possible lamp and is very convenient for travelers who find it necessary to improvise a dark room. It consists simply of a hood of heavy orange paper which sets over a box containing a candle, yet the ventilation is perfect and there is no danger of fogging from white light if ordinary precaution is taken. When not in use the hood may be folded up and packed in the same box that contains the candle.

Price Eastman's Orange Candle Lamps, each, 25 cents.

Eastman's Kodak Dark-Room Lamp.

This lamp is well made and safe. It is equipped with improved burner carrying a one inch wick, and has new ventilating top ensuring a bright, steady flame. It is the safest dark room lamp made being fitted with both ruby and orange glass. The flame can be controlled from the outside and it is fitted with adjustable shield to protect the eyes from light and throw it directly on the work.

Improved Kodak Dark-Room Lamps, each, \$1.50.



Trays, Printing Frames, Etc.

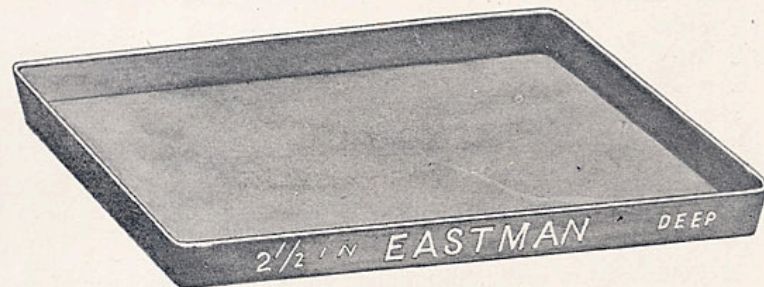
Paper Developing Trays.

For Films or Plates 4 x 5 or under,	EACH.
Papier Maché for Films or Plates 5 x 7 or under,	\$0 10
	35



Developing Tray for Permanent Bromide Paper.

These trays are made of wood and lined with rubber cloth without joint, cemented, and fastened on the outside with brass nails.



These trays will not give rust marks in developing, and are so light as to be easily handled, even the largest sizes. The 26 x 32 weighs 7½ lbs.

Price List—Wooden, Rubber Lined Trays.

	PRICE.
19 x 23 for 18 x 22 paper, - - - - -	\$3 50 ¹
21 x 25 " 20 x 24 " - - - - -	4 00
23 x 28 " 22 x 27 " - - - - -	4 50
26 x 32 " 25 x 30 " - - - - -	5 00
32 x 42 " 30 x 40 " - - - - -	7 50
32 x 62 " 30 x 60 " - - - - -	10 00

Polished Hard Rubber Developing Trays.

Flat Bottoms.—The rubber trays with ribbed bottoms being unsuitable for developing paper, we have arranged for the manufacture of a special flat bottomed tray without ribs.

Price List.

PRICES EACH.

4 $\frac{3}{4}$ x 5 $\frac{5}{8}$ for $\frac{1}{4}$, 4 x 5, and 4 $\frac{1}{4}$ x 5 $\frac{1}{2}$ plates, - - - - -	\$0 27
5 $\frac{1}{2}$ x 8 $\frac{1}{2}$ for 5 x 7 and 5 x 8 " - - - - -	56
7 x 9 for 6 $\frac{1}{2}$ x 8 $\frac{1}{2}$ " - - - - -	72
8 $\frac{1}{2}$ x 10 $\frac{1}{2}$ for 7 x 9 and 8 x 10 " - - - - -	1 08

Printing Frames.PRICE EACH
WITHOUT GLASS.

3 $\frac{1}{4}$ x 4 $\frac{1}{4}$ - - - - -	\$0 36
4 x 5 - - - - -	38
4 x 5 Special - - - - -	25
4 $\frac{1}{4}$ x 5 $\frac{1}{2}$ - - - - -	40
4 $\frac{1}{4}$ x 6 $\frac{1}{2}$ - - - - -	42
5 x 7 - - - - -	50
5 x 7 Special - - - - -	35
5 x 8 - - - - -	52
6 $\frac{1}{2}$ x 8 $\frac{1}{2}$ - - - - -	60
8 x 10 - - - - -	75

Flash Lamps.

McCullin's, \$1.50 each; Blitz Pulver for same, per package of 20 capsules, 60 cents. Luxo, per bottle, 60 cents.

NOTE.—Blitz Pulver and Luxo must not be used in magazine lamps.

Hemperley's, \$2.75 each; Magnesia powder for same, per oz., 50 cents.

Squeegees.

	EACH.
Velvet rubber, 6 inch, - - - - -	\$0 40
" " 8 " - - - - -	50

Ferrotypes Plates.

	EACH.
10 x 14 - - - - -	\$0 15
18 x 24 - - - - -	50

Thermometers for Use in Toning Bath.

	EACH.
Solio Thermometers, very accurate, - - - - -	\$0 40

Chemicals.

	PRICE.
Eastman's Eikonogen Developer Powders, per pkg. of 12, for 48 oz's developer, - - - - -	\$0 50
Pyro Powders, per pkg. of 12, for 48 oz's developer, - - - - -	50
Postage for either of above, - - - - -	08
Solio toning and fixing solution, per 8 oz. bottle, - - - - -	50
Soaking solution for films, 8 oz. bottle, - - - - -	35
Intensifier, 8 oz. bottle, - - - - -	35
Bromide Potassium, per oz., - - - - -	15
Hyposulphite Soda, per lb., - - - - -	10
Proto Sulphate of Iron, per lb., - - - - -	10
Oxalate of Potash, per lb., - - - - -	40
Citric Acid, 4 oz. bottle, - - - - -	30
15 gr. bottle Chloride of Gold and Sodium, - - - - -	35
Powdered Alum, per lb., - - - - -	10

Developing and Printing Outfits:

Developing Outfit.

	4 x 5
1 Eastman candle lamp, - - - - -	\$0 25
3 5 x 8 hard rubber trays, - - - - -	1 68
1 Graduate, - - - - -	35
1 Minim glass, - - - - -	25
1 pkg. developer powders, - - - - -	50
1 oz. Bromide potassium, - - - - -	15
1 lb. Hyposulphite soda, - - - - -	10
1 lb. powdered alum, - - - - -	10
1 bottle soaking solution, - - - - -	35
1 bottle intensifier, - - - - -	35
1 camel's hair brush, - - - - -	20
1 glass rod, - - - - -	10

\$ 4 38

Printing Outfit.

	4 x 5
1 Printing frame, special, - - - - -	\$0 25
1 Clear glass for do, - - - - -	05
*3 5 x 8 hard rubber trays, - - - - -	1 68
*1 Graduate, - - - - -	35
1 flat paste brush, - - - - -	10
4 dozen mounts, gold bevel edge, - - - - -	60
4 dozen sheets, Solio paper, - - - - -	1 00
1 bot. Toning Solution for paper, - - - - -	50

\$ 4 53

*Duplicates which are not required if operator has the developing outfit.

Combined outfits for developing and printing Eastman's Transparent Films, boxed :

No. 2.	No. 3.	No. 4.	No. 5.	No. 6.
\$7 50	\$6 50	\$6 50	\$7 00	\$8 00

"A B C" Developing and Printing Outfits for Films or Plates.

	4 x 5
1 Eastman Candle Lamp, - - - - -	\$0 25
1 4 x 5 Printing Frame, - - - - -	25
1 " Glass for do, - - - - -	05
1 Glass Beaker, - - - - -	12
1 Stirring Rod, - - - - -	05
4 4¼ x 5½ Developing Trays, - - - - -	40
½ doz. Developing Powders, - - - - -	25
½ lb. Hyposulphite Soda, - - - - -	07
½ oz. Bromide Potassium, - - - - -	10
2 doz. 4 x 5 Solio Paper, - - - - -	50
2 ozs. Solio Toning Solution, - - - - -	15
1 oz. Glycerine, - - - - -	05

\$2 24

Price, complete, neatly packed, - - - - - \$1 50

Eastman's Special, 5 x 7 Developing and Printing Outfit for Films or Plates.

	5 x 7
1 Eastman Candle Lamp, - - - - -	\$0 25
1 5 x 7 Printing frame, special - - - - -	35
1 Glass for same, - - - - -	05
1 Glass Beaker, - - - - -	12
1 Stirring rod, - - - - -	05
3 5¼ x 7½ Trays, - - - - -	1 05
1 doz. Developing powders, - - - - -	50
1 lb. Hyposulphate Soda. - - - - -	10
½ oz. Bromide Potassium, - - - - -	10
1 oz. Glycerine, - - - - -	05
2 doz. 5 x 7 Solio, - - - - -	80
4 ozs. Solio Toning Solution, - - - - -	25

\$3 67

Price complete, neatly packed, - - - - - \$3.00.

Enlarging and Finishing on Permanent Bromide Paper.

In soliciting from the trade orders for enlargements we beg to remind it that being the largest manufacturers of Bromide Paper in existence, with sales reaching every country on earth, our first and chief interest lies in maintaining the reputation of our paper. Our Enlarging Department is conducted with this interest in view, its employees are among the most skillful, and every facility is placed at their disposal,—that regardless of cost, only creditable work shall be passed. We claim for our Bromide Paper that a higher class of finish, with less work, can be obtained upon it than upon plain paper, or on prints made by any other process. They have been thoroughly tested as to permanency by time and chemicals and have never been known to fade.

Our **Finishing Department** is conducted with the same interests in view. Only artists competent to do first-class work are employed, and every care is taken to make the work satisfactory to our patrons.

The Full Guarantee of the Company is given as to the *quality* of the work; that, if a plain enlargement, it will be the best that can be made from the original sent us; and, if a finished picture, that it shall be done by competent artists and be fully up to the standard for the class of work ordered. If for any reason the work is not satisfactory at first, we make it so. Our customer runs no risk.

Enlarging and Finishing on Permanent Bromide and Enameled Bromide Paper.*

SIZE.	NOT MOUNTED.	MOUNTED ON CARD.	MOUNTED ON STRETCHER.	MOUNTED AND RETOUCHE.	FINISHED FIRST CLASS.	FINISHED FULL GRAYON.
10 x 12	\$ 1.00	\$ 1.25	\$ 1.50	\$ 2.50	\$ 4.00	\$ 6.00
11 x 14	1.25	1.50	1.75	2.75	4.75	7.00
14 x 17	1.50	1.75	2.00	3.00	5.50	8.25
16 x 20	1.75	2.00	2.25	3.50	6.25	9.50
18 x 22	2.25	2.75	2.75	4.00	7.25	11.00
20 x 24	2.50	3.00	3.00	4.50	8.00	12.00
22 x 27	2.75	3.50	3.50	5.00	8.50	13.00
25 x 30	3.00	3.75	3.75	5.50	10.00	15.00
24 x 36	4.00	4.75	4.75	7.00	15.00	22.50
30 x 40	6.00	7.25	7.25	10.00	20.00	30.00
30 x 50	7.50	9.00	9.00	12.50	25.00	37.50
30 x 60	9.00	10.50	10.50	15.00	30.00	45.00
40 x 60	11.50	13.50	13.50	20.00	37.50	55.00
40 x 70	12.50	15.00	15.00	22.50	45.00	67.50

OTHER SIZES IN PROPORTION.

From Good Original Negatives Only.

33 1-3 to 50 Per Cent. Extra for Finishing Copies.

No Charge for Packing.

These prices include the print. Retouching the negatives when required, 50 cents. Making negatives, 25 cents.

Prices of opals and finishing in pastel and water-color on application.

No extra charge for Sepia Tones.

Always send guides with orders for finished work.

GUARANTEE. We guarantee the likeness when no changes from the negative are required. All changes from the negative are at client's risk, and will be charged extra if they involve extra work.

All orders for enlarging and finishing must be paid in advance.

Kodak enlargements mounted on card, 10 x 12, \$1.00; 11 x 14, \$1.25; 14 x 17, \$1.50.

*Enlargements on Enameled Bromide Paper cannot, of course, be finished in crayon.

Definition of Crayon Work.

Mounted and Retouched. This includes spotting and mending, and a few artistic touches in the background, sufficient to make a readily salable finished print from a good negative.

Finished, First Class. This includes an artistic background, smoothing the face, sharpening the eyes and hair, and all work necessary to make a *highly finished print*.

Finished, Full Crayon. Includes working over the entire print, the result being a highly finished *crayon drawing*.

Enlargements on Enameled Bromide Paper.

Untoned Prints on Eastman's Enameled Bromide Paper combine the soft effects of a platinum or bromide with a highly enameled surface. These prints have a slightly pink tint which commend them to those who do not like the cold tones of an ordinary bromide.

Sepia Toned Enlargements on our Enameled Bromide Paper can hardly be distinguished from contact work on Aristo Paper. With our hypo toning bath the tones are believed to be permanent and not liable to bronze in the shadows as are prints toned with uranium.

When Ordering.

Write your directions as clearly as possible, giving size of paper, face measure from edge of hair to bottom of chin, or head measure from *top* of hair to bottom of chin. Say if it be solid or vignette, and whether a light, medium or dark print is wanted.

If to be finished, give necessary directions as to work and what grade of work is desired, using the titles in our price list.

Photographers and artists are always welcome in our Enlarging and Finishing Department, where practical demonstrations will be given in our methods of enlarging as well as finishing the Bromide Enlargements.

Transferotype Prints.

By our **Transferotype Process**, all the difficulties heretofore experienced in finishing enlargements upon opal glass and canvas, have been overcome. These enlargements are now made with all the certainty, and with all the depth of color and richness of detail shown in our best prints upon Bromide Paper.

Transferotype Enlargements on Canvas.

The **Artist in Oil** will find in these enlargements upon canvas a new and valuable aid, furnishing him, as it does, a photographic drawing to build upon, on canvas ready sized and prepared for the brush, and which not having been subjected to any of the operations necessary in obtaining the photograph, is not contaminated with any of the chemicals used in that process.

The canvas is sized and prepared for use under the direction of an experienced artist, and its texture or surface is not affected by the photographic picture.

The practical artist will readily appreciate the advantage here offered him, wherein he is enabled to use the aids of photography *without sacrificing the working qualities of his canvas*.

On Opal Glass.

Opal Enlargements, by this process, are much richer and more brilliant than those made by the old process of photographing directly upon the glass, and owing to the manipulations of the process, are proof against any change.

When desired we furnish them in Monochrome or Water Color, at prices favorable to the photographer. Our artists are experienced, and we guarantee their work satisfactory.

Prices for finishing furnished upon application, and any further information desired, cheerfully given.

Price List Transferotype Enlargements.

	ON OPAL GLASS.	FINISHED IN MONOCHROME.		ON CANVAS MOUNTED ON STRETCHER.
10 x 12	\$2 00	\$5 00	10 x 12	\$2 25
11 x 14	2 50	5 50	11 x 14	2 65
14 x 17	3 00	6 50	14 x 17	3 00
16 x 20	3 50	7 50	16 x 20	3 40
18 x 22	4 00	9 00	18 x 22	4 00
20 x 24	5 00	12 00	20 x 24	4 50
			22 x 27	5 25
			25 x 30	5 65
			24 x 36	7 00
			30 x 40	10 00

The prices for finishing include the enlargement.

Prices for finishing in Water Color furnished on application.

Developing and Printing.

The Eastman Company was the first to render commercially possible the separation of the developing and printing from the *picture taking*. The division of labor inaugurated by them has brought picture taking within the reach of thousands of persons throughout the world who could not otherwise practice the art.

Carrying the division of labor still further, in our own factory we employ trained operators in every branch of the work. Men who do nothing but develop, girls who do nothing but print, men who do nothing but tone, girls who do nothing but mount, girls who do nothing but "spot" prints, men who do nothing but burnish, etc., etc. As a consequence each becomes skilled in his or her particular branch, and the result, under good superintendence, is good work—better work in particular and in average, than can be done except under these favorable conditions.

Developing Eastman's Transparent Films.

SIZE.	DEVELOPING.
2¾ x 3¼,	4 cents each.
3¼ x 4¼,	6 " "
3½ x 4,	6 " "
4 x 5,	8 " "
4¼ x 5½,	8 " "
4¼ x 6½,	10 " "
5 x 7,	10 " "
5 x 8,	10 " "
6½ x 8½,	10 " "
8 x 10,	15 " "

If less than one dozen are developed at one time, 25 cents extra will be charged on the order.

Printing from Film Negatives.

SIZE.	On Gold Bevel Edge Chocolate or Primrose Mounts.
No. 1 Kodak,	6 cents each.
No. 2 " "	8 " "
" A " "	6 " "
" B " "	8 " "
3¼ x 4¼,	8 " "
4 x 5, or "C"	10 " "
4¼ x 5½,	10 " "
4¼ x 6½,	12 " "
5 x 7,	12½ " "
5 x 8,	12½ " "
6½ x 8½,	17½ " "
8 x 10,	25 " "

If less than one dozen are ordered at one time, 25 cents extra will be charged on the order.

For developing and printing entire Kodak roll and reloading Kodak, see page 89.

Contact Prints on Bromide Paper.

SIZE.	UNMOUNTED.	Mounted on card-board. Wide Margin.
2¾ x 3¼,	15 cents each.	20 cents each.
3¼ x 4¼,		
3½ x 4,		
4 x 5,		
4¼ x 5½,		
4¼ x 6½,		
5 x 7,	20 " "	25 " "
5 x 8,	30 " "	40 " "
6½ x 8½,	40 " "	50 " "
8 x 10,		

Kodak Albums.

How to Preserve Kodak Pictures.

Users of the Kodak or Kodet after having accumulated a fine collection of pictures often desire to put them in more permanent form, as the loose prints are liable to become lost or mislaid.

It is also often desirable to have the prints in a certain consecutive order and it is difficult to keep them so when mounted separately.

To meet this want we have prepared a series of albums of various styles in which duplicate prints can be mounted, and in connection therewith we have instituted a system by which the Kodaker can have his pictures mounted in the album in any order that may be desired.

Price List.

	Albums.				
	1 for 104 Pictures.	2 for 104 Pictures.	3 for 104 Pictures.	4 for 104 Pictures.	5 for 52 Pictures.
Style A, Cloth bound,	\$1 60	\$2 00	\$1 60	\$2 00	\$2 25
Style B, Half Morocco, gilt edges,	2 00	2 50	2 00	2 50	2 75
Style C, Full Morocco, gilt edges,	2 75	3 50	2 75	3 50	3 75
Printing and Mounting.					
Pictures including	(104)	(104)	(104)	(104)	(52)
Album Style A*,	6 00	8 00	8 00	10 00	6 75
“ “ B*,	6 50	8 50	8 50	10 50	7 25
“ “ C*,	7 25	9 50	9 50	11 50	8 25
Bindings Only.					
Style A, without leaves,	80	1 00	80	1 00	
Style B, “ “	1 10	1 30	1 10	1 30	
Style C, “ “	1 80	2 30	1 80	2 30	
Leaves Only.					
Style A, each,	07	08	07	08	
Style B or C, “	07½	09	07½	09	
Prints.					
Unmounted, each	05	07	07	09	10

*These prices hold good only for *duplicate* prints, i. e., when the negatives have been printed from before. When the first prints are ordered mounted in an Album, the price of the Album will be added to the unmounted price of the pictures.

Sundries.

Mounts for prints up to and including 4 x 5, per doz., (\$1.20 per 100.)	\$ 15
Mounts, 5 x 7, per doz., (\$2.40 per 100)	30
“ 6½ x 8½ per doz., (\$3.50 per 100)	45
Masks for printing (4 openings), per doz., including Gummed Strips for attaching Negatives, per package, for No. 1 or 2	25
Glass forms, circular, oblong and diamond shape, each, for No. 1 or 2.	40
14 x 17 Enlargements from Kodak Negatives mounted on 18 x 22 card, each,	1 50
11 x 14 Enlargements from Kodak Negatives on card, each,	1 25
10 x 12 Enlargements from Kodak Negatives on card, each,	1 00
Lantern Slides from Kodak Negatives, (\$5 00 per doz.), each,	50
Glass for covering Lantern Slides, per doz.	35
Eastman's prepared Cover Glass with mats and binders attached, per doz.,	50
(Specify what size of mat, No. 1 or 2 Kodak, or square opening.)	
Eastman's prepared Cover Glass, no mats, per doz.,	40
Masks and Gummed paper strips for same, per package,	25
Rubber Slides for Kodak or Kodet plate holders, 4 x 5, each,	25
“ “ “ “ “ “ “ 5 x 7 “	35

NOTE. — In ordering Slides always give exact definition of instrument.

. . . INDEX . . .

	PAGE.
Adjustable Tripod Heads,	113-115
Albums,	146
Apparatus,	13 to 115
Book Form Double Plate Holder,	101
Bromide Paper,	116-125
Bromide Copying Paper,	124
Bromide Potassium,	137
Bullet Cameras,	86
Carrying Cases for Plate Holders, Jr. Kodaks,	33
" " " " Folding Kodaks,	49
" " " " Kodets,	88
Carrying Cases for Kodaks,	70
Carrying Cases for Interchangeable View Cameras,	103
Cameras,	22-103
" Kodak,	22-70
" Kodet,	71-87
" Bullet,	86
" Interchangeable View,	94-103
" Enlarging,	104-105
Camera Sunds., Interchangeable View Cameras,	103
Chemicals,	137
Chloride of Gold and Sodium,	137
Chloride Papers,	126-129
Citric Acid,	137
Collodion Paper,	129
Combined Toning and Fixing Solution,	127
Condensers, Plano Convex,	105
Counters for Old Kodaks,	35
Cover Glass for Lantern Slides,	147
Crayon Finished Enlargements,	141-142
Dark Room Lamps,	134
Daylight Enlarging Camera,	104
Developing and Printing Kodak Negatives, full rolls,	68-69
Developing and Printing Outfits,	138-139
Developing and Printing,	144-145
Developer Powders,	137

LP 1370

	PAGE.
Transparent Film for Kodak Roll Holders,	131 and 87
“ “ “ Bullet and Bull's Eye Cameras,	131 and 86
Transparency Plates,	133
Transferotype Paper,	125
Trays, Paper Developing,	135
“ Hard Rubber,	135
“ Wooden, rubber lined,	135-136
Tripods, Kodak,	106-197
“ Eastman,	108-109
“ Victor,	110
“ Genesee,	111
“ Improved Staff,	112
Tripod Head, “Adjustable,”	113-114
“ “ “ Jr.,	115
Western Collodion Paper,	129
Window Box for Enlarging,	105
Wide Angle Lenses for Folding Kodaks,	40, 44, 47