



THE J. SUSSMAN P. S. CO.
223 Park Ave.,
Baltimore, Md.



KODAK

THE GROWTH
AND TRIUMPH
OF AN IDEA.

LP1371

KODAK

KODAKS

AND

KODAK SUPPLIES

BEING A CATALOGUE OF MATERIALS FOR THE
AMATEUR PHOTOGRAPHER

MANUFACTURED BY THE
EASTMAN KODAK Co.
ROCHESTER, N. Y.
U. S. A.

LONDON
LIVERPOOL
GLASGOW
MELBOURNE

PARIS
BRUSSELS
ST. PETERSBURG
MILAN

BERLIN
VIENNA
MOSCOW
LYONS



THE GROWTH AND TRIUMPH OF AN IDEA

KODAK represents the growth and triumph of an applied idea—Simplicity. The application of the idea is not, however, to the camera alone, but to all the succeeding steps of picture making. It makes every detail of photography easy for the amateur.

The Kodak opened the way for hundreds of thousands of amateurs who, at first, merely “pressed the button.” But to “do the rest” became their immediate ambition. Under the conditions that then existed, however, the difficulties which the amateur faced were by no means trifling. The inconveniences were many, the difficulties of technique too great for those who could give but little time to the art. There was plainly a growing necessity for easier and simpler methods and there could be but one logical outcome—a general simplifying of photographic processes.

What seemed necessary, a dozen years ago, to the ultimate triumph of the Kodak idea is now an accomplished fact. Every step in picture making as well as in picture taking has been made easy. The transparent film, the daylight loading cartridge, the simplified methods of development, the improved printing papers have all conspired to place photography within the reach of everyone. With the simplifying of the processes has come also improvement in quality of lenses and shutters; films have proven their superiority in quality as well as in convenience over glass plates, and the printing papers show that difficult technique is no longer necessary to the finest pictorial results. Thus the obstacles which obstructed the path of the amateur of ante-Kodak days have been brushed aside and mere school boys

PUBLISHED AT THE HOME OF
THE KODAK, ROCHESTER, N. Y.,
BY THE KODAK PRESS.

THE GROWTH AND TRIUMPH OF AN IDEA—Continued

and girls are able to so far master photography as to accomplish work that is technically perfect.

The less mechanism to be looked after in working the camera the more thought and attention can the operator give to the composition of his picture. Each annoying detail removed proves a help in the rendering of artistic results. To its very simplicity, then, is due the fact that the average quality of Kodak work is constantly improving. To this simplicity is due the steady growth of our business, the continued interest in Kodakery, the remarkable gain of films over glass plates.

The Kodak system of picture taking and picture making stands for the growth and triumph of an idea.

EASTMAN KODAK COMPANY.

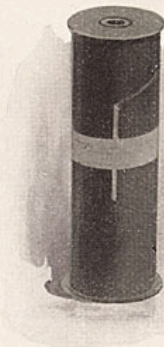
Rochester, N. Y., 1902.

THE FILM CARTRIDGE

IT is upon the Film Cartridge that the success of the Kodak system is based. It is this that has made pocket photography practical and has made it possible to do away with the dark room in loading and in unloading the camera.

A wooden spool with a flange on each end, between which flanges is wound a long strip of black paper, is the simple principle of the Film Cartridge. Attached to the inner side of the black paper is a strip of film—the film strip, however, is several inches shorter than the paper strip, and when all is wound on the spool no light can touch the film. To load the Kodak we insert this cartridge (spooled paper and film) in a recess in the camera, and by breaking a gummed sticker we free one end of the black paper. A pull on the paper revolves the spool upon its axis and the paper is drawn across the rollers at back of camera and threaded into another spool, called the winding reel. The film is still hidden beneath several thicknesses of the heavy black paper, and no light has touched it. We now close the Kodak and turn the winding key until the figure 1 (which is in white on the black paper) appears before the red window in the back of camera. This means that the extra thicknesses of black paper have been wound onto the reel and that the film is in position for the picture-taking to begin. After the exposure has been made, two or three more turns of the key bring figure 2 into view and we are ready for the next exposure.

When all the exposures on the roll have been made, the key is given a dozen extra turns, thus again giving several extra wrappings of black paper around the film. The Kodak is opened; the end of the black paper is fastened down with a gum sticker provided for the



—THE FILM CARTRIDGE—*Continued*—

purpose and the exposed cartridge is removed *in daylight* without danger of injury. It is all very simple and easy—easier to do when one has the Kodak before him—than to read about.

The black paper running the full length of the film, extending beyond each end and threading into the “carrying spool” and into the “winding reel” takes all the tension. There is no strain on the film (which is carried along by the black paper) and there are no joints of film and paper to give way under the pull of the winding reel. No mechanism is necessary for counting off the exposures. The white figures on the black paper are readily seen through the red window, showing to a certainty just how many exposures have been made.

The advantages of the Film Cartridge over glass plates are not confined to the daylight loading feature.

Kodak Cartridges weigh about one-twentieth as much as glass plates and the necessary holders. For instance, a cartridge of twelve exposures, 4 x 5, tips just 2½ ounces, while an equivalent in glass plates and the necessary holders weighs three pounds.

Kodak Cartridges are non-breakable; a half dozen may be carried in the pocket without inconvenience and they may be sent by mail without fear of damage.

Kodak films are more easily developed than plates. They may be readily handled in the developer in strips of a dozen at a time. Plates, owing to their fragile nature and on account of their sharp edges and corners must be developed singly or disaster is likely to result to their neighbors.

In their non-halation and orthochromatic qualities films show their marked superiority to glass plates. Halation, which is one of the difficulties of picture making with which every photographer has struggled, is nothing more nor less than “fog” which is caused by the light rays reflected from the back of a plate. These rays, owing to the angle of reflection, attack the sensitive salts at points where

—THE FILM CARTRIDGE—*Continued*—

they are not wanted and cause a blurring of the image which forms a sort of halo of light about it—hence the term “halation.”

Now the average glass plate being about nineteen times as thick as film the light ray reflected from the back of a plate will diverge nineteen times as much as will a ray reflected from the back of our film, and will therefore blur the image nineteen times as much. No argument is necessary to demonstrate also that glass is a great reflector of light and therefore throws a much stronger ray back to the sensitive side of the plate than does the comparatively dull surfaced film.

Still further—the cartridge film is backed by dull surfaced black paper which absorbs a very large part of such light as reaches the back of the film, thus reducing halation to a minimum.

The remarkable freedom from halation in Kodak film gives it a palpable advantage over plates for the amateur's use. He does not work under the soft and well regulated light to be found in a photograph gallery, but under the strong rays of the summer sun, or in the glare of a snowy landscape, or he finds, in portrait making, that he must handle his subject under the harsh light from the single window which unevenly illuminates his improvised studio. The non-halation quality of film helps to overcome the too abundant contrasts which the amateur meets and gives him better results than he could obtain under similar conditions with glass plates.

Kodak Cartridge Films are not merely “as good as plates,” they are *better than plates*.

2, 4, 6 OR 12 EXPOSURES.

For work at home as well as for one's outings the Kodak is more convenient than the plate camera, and in all of the larger sizes the Kodak may be loaded for two, four, six or twelve exposures.

The 1½ x 2½, 2¼ x 3¼ and 2½ x 4¼ Kodak Cartridges are furnished for six or for twelve exposures.

—THE FILM CARTRIDGE—*Continued*—

The $3\frac{1}{2} \times 3\frac{1}{2}$, $3\frac{1}{4} \times 4\frac{1}{4}$, 4×5 and 5×7 sizes may be had for "Double-Two," six or twelve exposures.

Brownie Camera cartridges are furnished for six exposures only and Roll Holder cartridges for twelve exposures only.

The "Double-Two" cartridges, as the name implies, contain film for four exposures, but are so wound that two exposures may be made and then removed *in daylight* and the remaining two exposures threaded up for further use; or, if preferred, the operator may make the entire four exposures with a single loading and he has the option, until making ready for the third exposure, of handling the film in either way.

—THE KODAKS—



PERFECTION in every detail is the secret of the continued Kodak success. The Kodak oak is firmly rooted in the cartridge system, but the healthy growth of every limb and branch is due to the superb quality of the instruments themselves.

Ours is the largest and most perfectly equipped camera factory in the world; much of our machinery was built especially for the manufacture of cameras. Every convenience, every machine that is needed for economical and perfect camera construction is immediately supplied. We employ the most expert mechanics, men who have had years of experience in the manufacture of high grade cameras, men whose duty it is to constantly plan for improvements, to test every new idea submitted, to work constantly for the continued triumph of the Kodak idea. We use only the best materials, and the best methods and by reason of our careful system of testing maintain the "Kodak quality"—the highest photographic standard.

In the construction of Kodaks we have learned how to prepare the wood-work so that it will resist climatic changes to a remarkable degree. The camera bodies in some of our instruments are made of a combination of wood and aluminum which gives both strength and lightness. The Folding Pocket Kodaks being made almost entirely of aluminum are both light and strong, and are weather proof. Aluminum neither shrinks, swells nor rusts. The high standard of excellence maintained in our instruments is only made possible by our facilities, our experience and our trained staff of camera experts.

By careful selection, by using only lenses which are adapted to the work which is expected of them, the optical as well as the mechanical excellence of the Kodak has been kept on the highest plane. Every lens used by us is twice tested. First by the lens maker's inspector, and his is a careful test, for he knows that any imperfect lens which he passes will be promptly returned, and then by our own expert who does not merely examine the lens for flaws, but after it is in position in

THE KODAKS—Continued

the camera focuses it under the magnifying glass. Any lens that falls short of the highest standard—perfection—is unhesitatingly discarded.

We believe that no other camera manufacturers are as rigid in this matter of lens selection as are we and that it is to this painstaking care that the high standing of the Kodak is largely due.

Our shutters are described in detail on another page. They are simple and accurate and therein lies their efficiency. Their very simplicity of mechanism reduces to a minimum their likelihood of getting out of order, and like the Kodak lenses they are individually tested with the utmost care.

AS PLATE CAMERAS.

Seven styles of Kodaks use either plates or films. The Bullet and Bullet Special Kodaks, the No. 3 Folding Pocket Kodaks and the Cartridge Kodaks can be fitted with plate holders, making compact and convenient plate cameras, the change from films to plates or *vice versa* being accomplished in a few seconds.

The No. 2 Bulls-Eye, the Nos. 2 and 4 Bulls-Eye Specials and the No. 2 Folding Pocket Kodaks can also be used for making single plate exposures. They do not take plate holders but when a single plate exposure is to be made in or near the house a plate can be put in position in the camera in a few seconds.

THEIR GREAT SCOPE.

Kodaks have no annoying limitations in the scope of work which they will accomplish. For instantaneous work and for time exposures, for landscape and for portraiture, they are perfectly adapted. Flash light work in the long winter evenings is one of the Kodaker's diversions. The Panoram-Kodak opens new and charming fields for winter work. The Cartridge Kodaks may be used with wide angle lenses or with the tele-photo attachment. Even the smallest Kodaks make good sized portraits by means of the portrait attachments. The

THE KODAKS—Continued

Cartridge Kodaks of either size make splendid enlarging cameras and the No. 2 Bulls Eyes, No. 2 Bullets, No. 2 Special Bulls-Eyes, No. 2 Special Bullets or any of the Folding Pocket Kodaks may be readily employed for this purpose.

TOURISTS AND SPORTSMEN.

For every phase of amateur photography the Kodak is superior to the plate camera—for the tourist who is photographically inclined it is indispensable. The traveler by train or steamer finds that it takes but little room, weighs but little and that the Film Cartridge is no trouble at all. The sportsman who lures with the fly or depends upon his trusted gun finds Kodak and film but a slight addition to his outfit. The cyclist and the canoeist find glass plates out of the question—their weight makes them an unbearable nuisance—but the Kodak and film add no appreciable weight to his equipment. He who tours by automobile or yacht must always figure on encountering rough roads or rough water which means a shaking up that is disastrous to glass plates yet troubles film not at all.

And above all, the daylight loading feature of the Film Cartridge appeals to every tourist, and to every sportsman. It is his photographic necessity. If he uses plates he must also use a dark room and the chances of his not finding one when he needs it most are too great to be taken.

THE MARK OF HIGH DEGREE.

“Kodak” is our trade-mark and no camera is a Kodak unless manufactured by us. All Kodaks have our name upon them and bear our serial number. Kodaks on which this number has been destroyed or mutilated are not guaranteed by us. If it isn't an Eastman it isn't a Kodak.

THE PICTURE "MAKING."

With every Kodak and Brownie Camera we furnish an illustrated instruction book which not only tells in simple terms how to make snap-shots and time exposures and flash lights but goes also into the details of developing and printing. For many amateurs the chief charm of photography lies in finishing the pictures. The Kodak is perfectly adapted to their needs. Films are easy to develop, easy to print from, and can be conveniently stored.

For those who desire to make the exposure only, films are a necessity. To send exposed plates to the professional for development is an unqualified nuisance. They must either be sent in the plate-holders or else removed from the holders in a dark room and carefully packed in a light-tight package before shipment. Then one trembles for fear some favorite negative will be broken in going or coming; and, alas, such fears are too often realized. Films may be shipped by mail at slight cost and without the slightest danger of breakage.

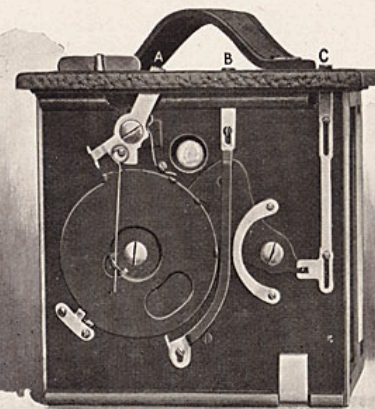
"You press the button, we do the rest."

KODAK PROGRESS COMPETITION.

To demonstrate the progress made by the Kodak in the field of photographic art we offer \$4,000.00 in prizes for the best Kodak and Brownie pictures submitted before Nov. 15th, 1902. Of this amount \$2,000.00 will be paid in gold and \$2,000.00 in Kodaks. The classification of prizes provides separately for those who do their own developing and printing and for those who leave it to a professional to "do the rest." There are also special classes for pictures made with the Brownie Cameras. Competent judges, well known in the photographic world, will award the prizes. Circulars giving the full details may be had at any Kodak dealers or by mail.

EASTMAN KODAK CO.

Rochester, N. Y.



THE simplicity and absolute reliability of our Rotary Shutter was one of the features which gave to the original Bulls-Eye and to the Pocket Kodak their immense popularity. It is always set. Snap-shots are made by simply pushing the lever "A" alternately to the right or left, thus revolving the metal disc and making the exposure as the opening in disc passes the lens. If, by chance, the lever be pushed in the wrong direction it will simply remain unmoved and no click will be heard.

For time exposures the Kodaker simply pulls up the slide "B" and then pushes the lever "A" in one direction to open and in the opposite direction to close the shutter. It will be seen that when the slide "B" is pulled out the shutter strikes as it passes the lens, stopping half way across with the opening over the lens.

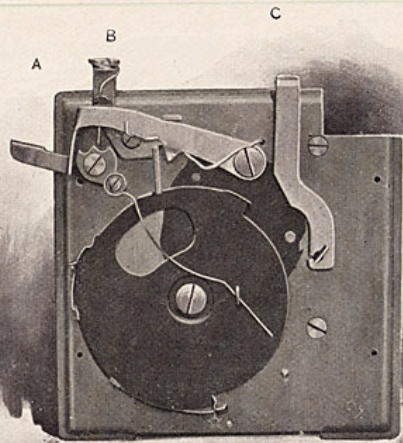
The lever "C" controls the stops, of which there are three.

Made with special machinery, by skilled mechanics, this simple mechanism makes an ideal shutter for the hand camera.

The Eastman Rotary Shutter is used on the No. 2 and No. 4 Bulls-Eye, No. 2 Bullet and the No. 2 Flexo Kodaks.

This shutter is also used on the Brownie Cameras; the No. 1 Brownies, however, have but one stop.

EASTMAN AUTOMATIC SHUTTER



T

O make a snap-shot: press down lever "B." To make a time exposure: press down lever "A" once to open, and again to close the shutter. That's all there is to operating the Eastman Automatic Shutter. It is always set.

The lever "C" operates the stops, of which there are three.

Not only are these shutters made with the finest special machinery and with the utmost care, but they are given a thorough and practical test by experienced inspectors. In fact, all of our shutters are subjected to the most rigid inspection before shipment as a guarantee that every part is perfect and that no error of adjustment has been made in assembling.

The Eastman Automatic Shutter is used on the Folding Pocket Kodaks, No. 0, No. 1, No. 1A, No. 2 and No. 3.

EASTMAN TRIPLE ACTION SHUTTER

T

HIS is a shutter with a wide range of action, built with the accuracy of a watch, yet simple, strong, reliable and far more compact than other shutters of similar capabilities.

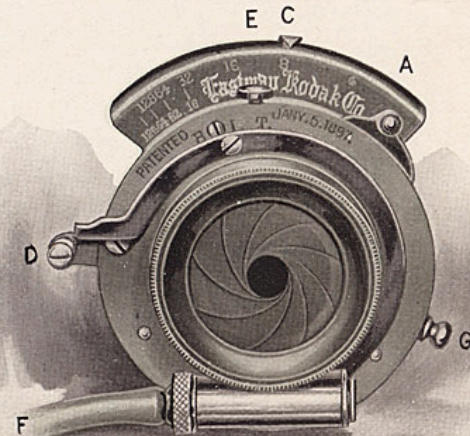
For snap-shots place lever "E" at point "I" and set shutter by turning lever "A" to left to limit of motion. Expose by pressing bulb attached to tube "F" or by touching release "D." There are three speeds for instantaneous exposures, which are regulated by moving the lever "G."

For time exposures place lever "E" at point "T" and set shutter by turning lever "A" to left to limit of motion. Press bulb (or release "D") once to open and again to close shutter.

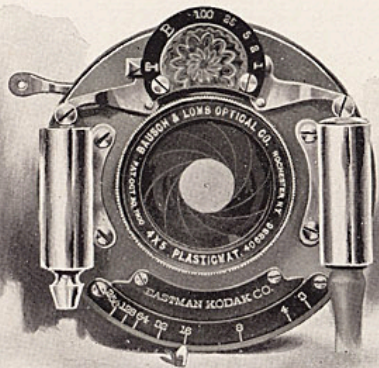
For short time exposure place lever "E" at "B" and set shutter by moving "A" to left to limit of motion. Press bulb (or finger release D) to open shutter and release it to close shutter. The shutter remains open as long as the bulb remains under pressure and closes the instant it is released.

The stops are operated by moving lever "C" and range from U. S. 4 to U. S. 128.

As furnished with the No. 3, 4 and 5 Cartridge Kodaks and No. 4 Bullet Special (Model C) Kodaks, this shutter is fitted with pneumatic release operated by bulb. With the No. 2 and No. 4 Bulls-Eye Special and the No. 2 Bullet Special Kodaks it is operated by levers, those for setting the shutter and making the exposure *working from the outside of camera*, so that the front does not have to be opened except to change the adjustment.



B. & L. AUTOMATIC SHUTTER



THIS is a shutter of the highest grade and is one which we have selected after the most careful tests for use where special lens and shutter equipments are desired. It will be furnished (extra) with the Nos. 3, 4 and 5 Cartridge Kodaks or with the No. 3 Folding Pocket Kodak and is included also in the regular equipment of the No. 3 Folding Pocket Kodak de Luxe at no extra charge.

The B. & L. Automatic shutter is always set and is operated by a pressure of the bulb or by touching the trigger. It gives automatic exposures from $\frac{1}{100}$ of a second to one second; it has the "bulb" exposure by which the shutter opens when the bulb is pressed and closes when the pressure is released and has the time action, one pressure of the bulb opening and another pressure closing the shutter. It is fitted with iris diaphragm stops with scale for openings Nos. 3, 4, 8, 16, 32, 64 and 128.

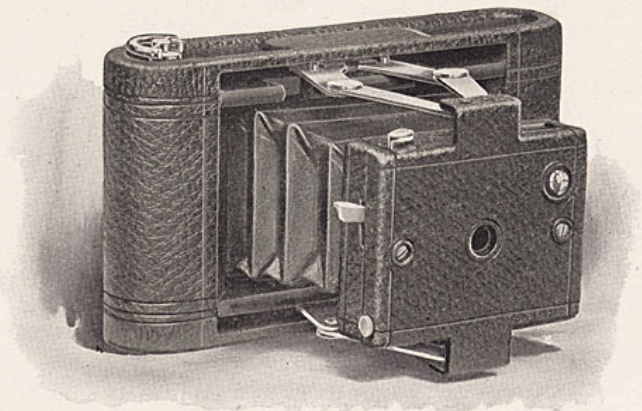
THE FOLDING POCKET KODAKS

ALUMINUM and the cartridge system of film photography made the Pocket Kodak possible. They are to other cameras what watches are to clocks. They lack nothing in efficiency; they gain everything in convenience. By the quality of the work which they accomplish they appeal to the serious photographic worker; by their unobtrusiveness they appeal to travelers who frequently wish to carry them where the camera is not looked upon with favor. This same unobtrusiveness especially commends them to those who, in order to get natural and characteristic poses, wish to take their subjects unawares. By their small size, light weight and durability they appeal to everyone.

In the hands of soldiers and war correspondents in Cuba, in the Philippines, in China and in the Transvaal they have proven their efficiency and durability. To the Kodak almost entirely, and particularly to the Pocket Kodak, is due the credit for the magnificent illustrations of these wars which have been published in the great weeklies and magazines—in some cases full double page pictures having been made from the small Kodak negatives.

All of the Folding Pocket Kodaks, from the six dollar No. 0, to the seventy-five dollar Kodak de Luxe, are well made in every particular. They stand for the latest triumph in photography.

THE No. 0 FOLDING POCKET KODAK



THIS instrument, the latest addition to the Kodak family, might almost be styled a "Vest Pocket Kodak." Indeed there are some liberal sized vest pockets that it will go into very readily, and it slips into an inside coat pocket as handily as a wallet. It is but $3\frac{1}{8}$ inches wide, $1\frac{3}{8}$ inches thick and $5\frac{5}{8}$ inches long and weighs but 12 ounces, yet makes pictures $1\frac{5}{8} \times 2\frac{1}{2}$ inches, or more than a third larger than the original Pocket Kodak. It has a meniscus lens of 3 inch fixed focus and perfect covering power, has the Eastman Automatic Shutter and set of three stops described on page 14, is fitted with brilliant finder and loads in daylight for six or for twelve exposures.

Made of aluminum, covered with fine black seal grain leather and has nickeled fittings. It is as dainty as a lady's purse.

THE PRICE.

No. 0 Folding Pocket Kodak, for pictures $1\frac{5}{8} \times 2\frac{1}{2}$, not loaded,	\$6.00
Transparent Film Cartridge, 12 exposures, $1\frac{5}{8} \times 2\frac{1}{2}$,	.25
Do., 6 exposures,	.15
Black Sole Leather Carrying Case, with shoulder strap,	1.00

No. 1 FOLDING POCKET KODAK

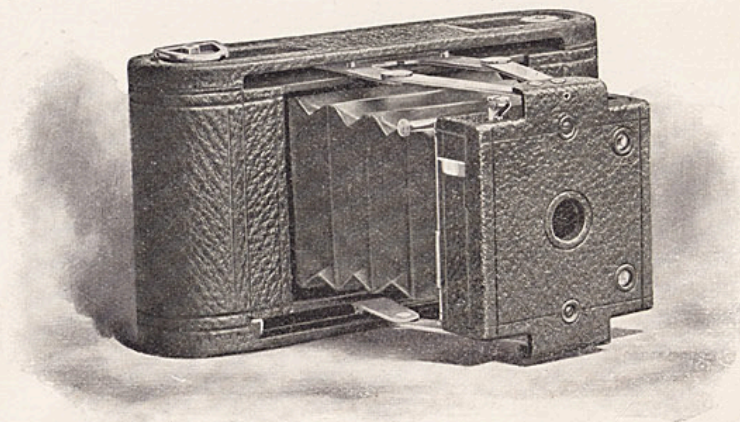
NO camera was ever more enthusiastically received than the No. 1 Folding Pocket Kodak, which was the original of our folding pocket series, and it has continued long in its popularity. Very small and compact, yet yielding pictures of a satisfactory size and of wonderful quality, it fully deserves the success which has attended it.

The lenses used in these instruments are meniscus achromatic, have a fixed focus of 4 inches and are most carefully tested by our own inspector. These cameras have the Eastman Automatic shutters with a set of three stops, described on page 14, have two brilliant finders, one for vertical and one for horizontal exposures, and have a capacity for 12 exposures, $2\frac{1}{4} \times 3\frac{1}{4}$, yet measure only $1\frac{5}{8} \times 3\frac{1}{2} \times 6\frac{3}{4}$ inches and weigh but 15 ounces.

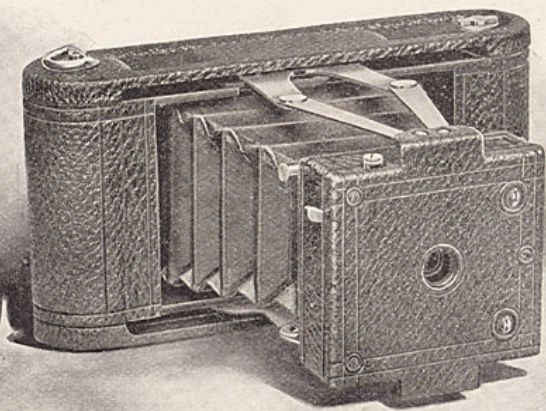
Made of aluminum, covered with fine black seal grain leather and have nickeled fittings.

THE PRICE.

No. 1 Folding Pocket Kodak for pictures $2\frac{1}{4} \times 3\frac{1}{4}$ inches, with achromatic lens, not loaded,	\$10.00
Transparent Film Cartridge, 12 exposures, $2\frac{1}{4} \times 3\frac{1}{4}$,	.40
Do., 6 exposures,	.20
Kodak Portrait Attachment,	.50
Black Sole Leather Carrying Case, with shoulder strap,	1.25



FOLDING POCKET KODAK No. 1A



A

UNIQUE feature of this instrument is the artistic shape of the pictures which it makes. Their size, $2\frac{1}{2} \times 4\frac{1}{4}$, is particularly adapted to broad landscape views where the instrument is used horizontally and to portraiture (especially full length figures) where it is used vertically. The No. 1A is, nevertheless, wonderfully light and compact.

The lens is meniscus achromatic with a fixed focus of 5 inches, the shutter is the Eastman automatic described on page 14, and is equipped with a set of three stops. It has two finders, one for vertical and one for horizontal exposures, and a capacity of 12 exposures without reloading. The size, $1\frac{3}{4} \times 3\frac{3}{8} \times 7\frac{3}{4}$ inches, is marvelously small for an instrument of such great capabilities, and the weight is but 18 ounces.

Made of aluminum, covered with fine black seal grain leather and has nickeled fittings.

THE PRICE.

Folding Pocket Kodak No. 1A, for pictures $2\frac{1}{2} \times 4\frac{1}{4}$ inches, with achromatic lens, not loaded,	\$12.00
Transparent Film Cartridge, 12 exposures, $2\frac{1}{2} \times 4\frac{1}{4}$,50
Do., 6 exposures,25
Kodak Portrait Attachment,50
Black Sole Leather Carrying Case, with shoulder strap,	1.25

No. 2 FOLDING POCKET KODAK

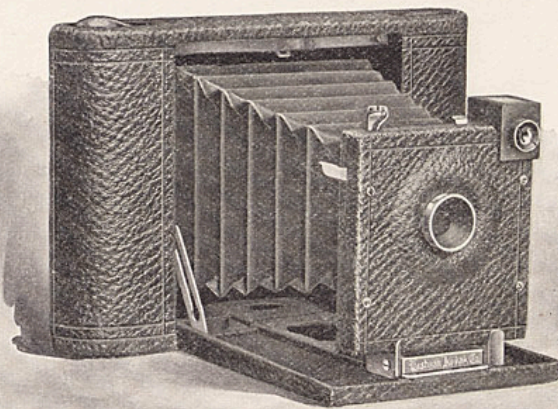
T

HAT the $3\frac{1}{2} \times 3\frac{1}{2}$ size has long been a popular one with amateurs is shown by the enormous sale of the $3\frac{1}{2} \times 3\frac{1}{2}$ Bulls-Eye and Bullet Kodaks. Furthermore, it is the largest size with which a fixed focus lens can be properly used and it thus appeals to the many amateurs who do not wish to be bothered with a focusing scale—yet desire the largest possible picture. A Folding Pocket Kodak which will make $3\frac{1}{2} \times 3\frac{1}{2}$ pictures is, therefore, a most desirable instrument.

The No. 2 Folding Pocket Kodaks have a capacity of 12 exposures, $3\frac{1}{2} \times 3\frac{1}{2}$, yet measure but $1\frac{1}{2} \times 4\frac{1}{2} \times 6\frac{3}{4}$ inches and weigh 17 ounces. They have meniscus achromatic lenses of great depth and speed and with a fixed focus of $4\frac{1}{2}$ inches. They have the Eastman automatic shutter described on page 14, have sets of three stops, brilliant finder, and socket for tripod screw. They are made of aluminum, have the finest black seal grain cover, have handsomely nickeled fittings and are at once strong, dainty and durable.

THE PRICE.

No. 2 Folding Pocket Kodak, for pictures $3\frac{1}{2} \times 3\frac{1}{2}$ inches, with achromatic lens, not loaded,	\$15.00
Transparent Film Cartridge, 12 exposures, $3\frac{1}{2} \times 3\frac{1}{2}$,60
Do., 6 exposures,30
Do., "Double-Two" Cartridge (4 exposures),20
Kodak Portrait Attachment,50
Black Sole Leather Carrying Case, with shoulder strap,	1.25

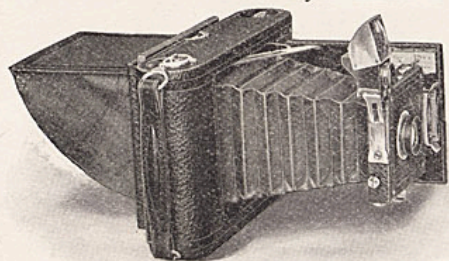
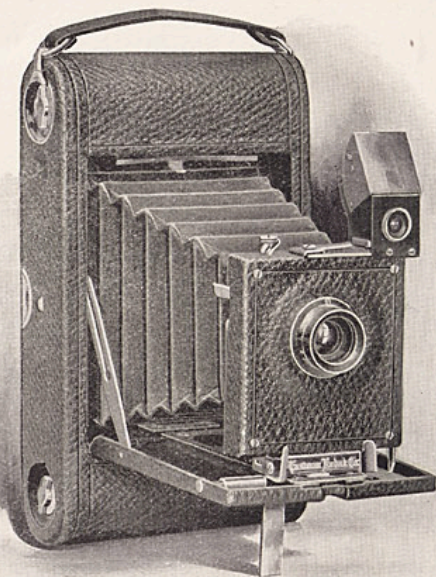


No. 3 FOLDING POCKET KODAK

IN this instrument is the triumph of pocket photography. It has the capacity of cameras of triple its bulk, loading for 12 pictures $3\frac{1}{4} \times 4\frac{1}{4}$ inches, yet it weighs only 22 ounces and measures but $1\frac{5}{8} \times 4\frac{1}{2} \times 7\frac{1}{2}$ inches.

It is fitted with double combination lenses which are strictly rectilinear and very rapid. It has our automatic shutter described on page 14, has a focusing scale, sets of three stops, socket for tripod screw and brilliant reversible finder with hood.

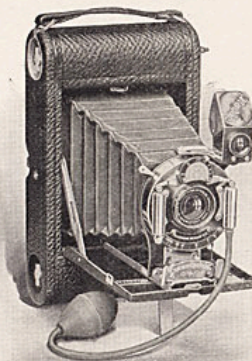
Made of aluminum, covered with the finest black seal grain leather and with nicked fittings, the No. 3 Folding Pocket Kodak is light, strong and handsome. Indeed, it is the ideal camera for those who demand the highest excellence in camera construction yet desire a pocket instrument.



SHOWING NO. 3 FOLDING POCKET KODAK WITH PLATE ATTACHMENT AND WITH FOCUSING SHADE RAISED.

An innovation for 1902 is the glass plate attachment which we can now furnish for these instruments. This attachment is simply an extra back for the camera, taking the place of the regular back, and can be placed in position in a few seconds. It has a ground glass for focusing and focusing shade and with it are used single aluminum plate holders which are very light, yet safe.

No. 3 FOLDING POCKET KODAK—Continued



NO. 3 FOLDING POCKET KODAK WITH B. & L. AUTOMATIC SHUTTER.

THE PRICE.

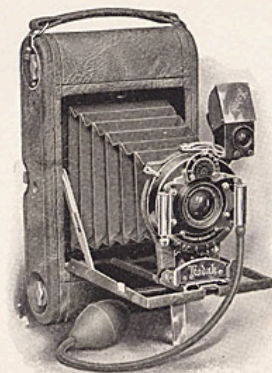
No. 3 Folding Pocket Kodak, for pictures $3\frac{1}{4} \times 4\frac{1}{4}$ inches, with Rapid Rectilinear Lens, and Eastman Automatic Shutter, (not loaded),	\$17.50
Do., with R. R. lens, speed <i>f.</i> 8 and B. & L. Automatic Shutter. (See page 16),	27.50
Do., with Bausch & Lomb Plastigmat Lens No. 1, focus 5 inches, speed <i>f.</i> 6.8 and B. & L. Automatic Shutter. (See pages 16 and 45),	59.50
Glass Plate Adapter, with ground glass,	3.50
Single glass plate holders, $3\frac{1}{4} \times 4\frac{1}{4}$, each,	.50
Transparent Film Cartridge, 12 exposures, $3\frac{1}{4} \times 4\frac{1}{4}$,	.70
Do., 6 exposures,	.35
Do., "Double-Two" Cartridge (4 exposures),	.25
Kodak Portrait Attachment,	.50
Black Sole Leather Carrying Case, with shoulder strap,	1.25

No. 3 FOLDING POCKET KODAK DE LUXE

THIS superb instrument is the same in construction as the No. 3 Folding Pocket Kodak described above, but is equipped with the Bausch & Lomb Plastigmat lens No. 1, speed *f.* 6.8 described on page 45, and has the B. & L. automatic shutter shown on page 16. The covering is of selected Persian morocco, a leather with a beautiful natural pattern in soft brown tints; the bellows are covered with brown silk; on each instrument is a solid silver name plate and with each one is included a hand sewed carrying case of Persian morocco with silver trimmings.

THE PRICE.

No. 3 Folding Pocket Kodak de Luxe, for pictures $3\frac{1}{4} \times 4\frac{1}{4}$ inches, with No. 1 Plastigmat lens, B. & L. Automatic Shutter with Carrying Case, (not loaded),	\$75.00
Transparent Film Cartridge, 12 exposures, $3\frac{1}{4} \times 4\frac{1}{4}$,	.70
Do., 6 exposures,	.35
Do., "Double-Two" Cartridge (4 exposures),	.25



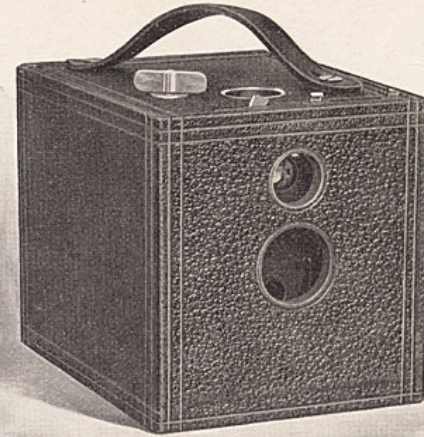
THE BULLET, BULLS-EYE AND FLEXO KODAKS

IN writing us regarding a Kodak which he had purchased, a well known amateur once said: "It stands the supreme test of mechanical perfection—it works."

To make cameras that "work," that are not likely to get out of order, that give results not only in the hands of the expert but in the hands of the novice—this has been and is our aim. We always make sure that we have accomplished this end before we place a camera upon the market. It is our object to so construct them that the beginner can readily grasp the method of operation and get twelve good negatives from his first twelve exposures.

In none of our instruments have we been more successful in securing absolute simplicity than in the Bullets, the Bulls-Eyes and the Flexos. Simple in construction as well as in operation, they are none the less perfectly made in every detail and are subjected to the same rigid tests to which we put the higher priced instruments. They are not so compact as the Folding Pocket Kodaks or the Cartridge Kodaks, but they are, nevertheless, instruments of high quality, instruments of great capabilities and absolute reliability. They have lenses and shutters which are adapted to each other and to the work which is expected of them. There are no more accurate and reliable cameras to be had than the Bullet, Bulls-Eye and Flexo Kodaks.

NO. 2 FLEXO KODAK

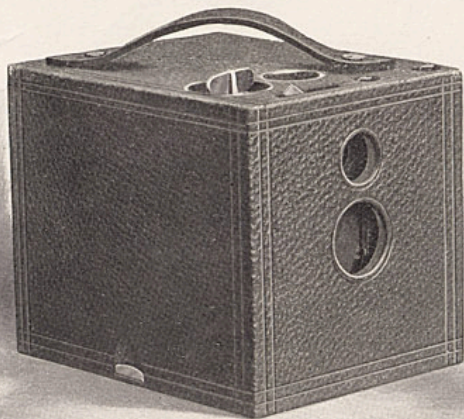


THIS, without exception, is the best five dollar camera ever offered. The No. 2 Flexo is in every respect a well made instrument and is fitted with fixed focus achromatic lens, set of three stops, finder, socket for tripod screw and our improved Rotary shutter described on page 13. It has a capacity of 12 exposures without reloading, making pictures $3\frac{1}{2} \times 3\frac{1}{2}$ inches, measures $4\frac{3}{8} \times 4\frac{5}{8} \times 5\frac{5}{8}$ inches and weighs 19 ounces. It is covered with fine grain leather and is handsomely finished. The Flexo, like the other Kodaks, is complete—ready for use, the price including every requisite for taking pictures except the film, whereas the price of most of the so-called five dollar plate cameras includes but one holder and a further expenditure of \$2.00 or \$3.00 is called for to supply the necessary number of holders.

THE PRICE.

No. 2 Flexo Kodak, for pictures $3\frac{1}{2} \times 3\frac{1}{2}$ inches, with achromatic lens, not loaded,	\$5.00
Transparent Film Cartridge, 12 exposures, $3\frac{1}{2} \times 3\frac{1}{2}$,	.60
Do., 6 exposures,	.30
Do., "Double-Two" Cartridge (4 exposures),	.20
Kodak Portrait Attachment,	.50
Black Sole Leather Carrying Case with shoulder strap,	1.25

THE No. 2 BULLS-EYE KODAK



THIS instrument, the original of the cartridge system series, accomplished wonders in the popularizing of amateur photography. Its simple and practical excellence made it at once a pronounced favorite, and it is still one of the most popular Kodaks. Improvements have, of course, been made from time to time, and the Bulls-Eye, though retaining the general features of the original instruments, is vastly better than the earlier models.

The No. 2 Bulls-Eye has a capacity for 12 pictures, $3\frac{1}{2} \times 3\frac{1}{2}$ inches; measures $4\frac{1}{2} \times 4\frac{5}{8} \times 5\frac{3}{4}$ inches and weighs 22 ounces. It has a meniscus achromatic lens with fixed focus of $4\frac{1}{2}$ inches, the Eastman Rotary shutter, described on page 13, set of three stops, brilliant finder, socket for tripod screw. The No. 2 Bulls-Eyes are covered with the finest seal grain leather, have nickeled fittings and are handsomely finished.

THE PRICE.

No. 2 Bulls-Eye Kodak, for pictures $3\frac{1}{2} \times 3\frac{1}{2}$ inches, fitted with achromatic lens, not loaded,	\$8.00
Transparent Film Cartridge, 12 exposures, $3\frac{1}{2} \times 3\frac{1}{2}$,60
Do., 6 exposures,30
Do., "Double-Two" Cartridge (4 exposures),20
Kodak Portrait Attachment,50
Black Sole Leather Carrying Case, with shoulder strap,	1.25

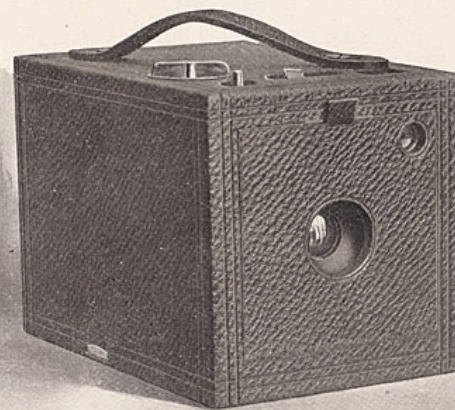
No. 2 BULLS-EYE SPECIAL KODAK

THIS instrument is built on the lines of the No. 2 Bulls-Eye, but is fitted with the Eastman triple action shutter and rapid rectilinear lenses of great speed. The shutter is fully described on page 15, and is fitted with iris diaphragm stops for Nos. 4, 8, 16, 32, 64 and 128. The lens has a focus of $5\frac{3}{8}$ inches and is of the same type and quality used in our Cartridge Kodaks—it has no superior for fixed focus work.

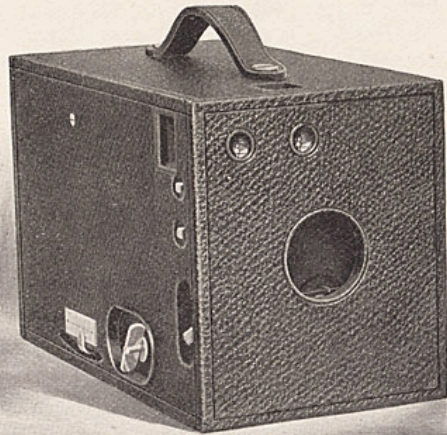
The No. 2 Bulls-Eye Special Kodak has square, brilliant finder, socket for tripod screw, has a capacity for 12 exposures $3\frac{1}{2} \times 3\frac{1}{2}$ inches, weighs 28 ounces and measures $4\frac{1}{2} \times 4\frac{5}{8} \times 6\frac{3}{4}$ inches. Covered with fine black morocco and has nickeled fittings. An instrument of great capabilities and the finest quality, absolutely simple in construction, always ready for use, yet equipped with lens and shutter of a quality to satisfy the most exacting amateur.

THE PRICE.

No. 2 Bulls-Eye Special Kodak, for pictures $3\frac{1}{2} \times 3\frac{1}{2}$ inches, with rapid rectilinear lens, not loaded,	\$15.00
Transparent Film Cartridge, 12 exposures, $3\frac{1}{2} \times 3\frac{1}{2}$,60
Do., 6 exposures,30
Do., "Double-Two" Cartridge, (4 exposures),20
Kodak Portrait Attachment,50
Black Sole Leather Carrying Case, with shoulder strap,	1.25



—No. 4 BULLS-EYE KODAK—



T

HIS instrument is a simple and practical camera of the box form, making pictures of the popular 4 x 5 size. It is well made in every particular and is splendidly equipped.

The No. 4 Bulls-Eye has an achromatic lens of superior quality and with a focus of $6\frac{1}{4}$ inches. It has the Eastman Rotary shutter, described on page 13, focusing scale, set of three stops, two brilliant finders, one for vertical and one for horizontal exposures, and is provided with two tripod sockets, one for vertical and one for horizontal exposures. It has a capacity of 12 exposures 4 x 5, measures $5 \times 5\frac{7}{8} \times 9\frac{1}{4}$ inches and weighs 2 pounds 10 ounces. It has a handsome finish, nickel fittings, and is covered with fine seal grain leather.

THE PRICE.

No. 4 Bulls-Eye Kodak, for pictures 4 x 5 inches, fitted with achromatic lens, not loaded,	\$12.00
Transparent Film Cartridge, 12 exposures, 4 x 5,90
Do., 6 exposures,45
Do., "Double-Two" Cartridge (4 exposures),30
Black Sole Leather Carrying Case, with shoulder strap,	2.00

NO. 4 BULLS-EYE SPECIAL KODAK

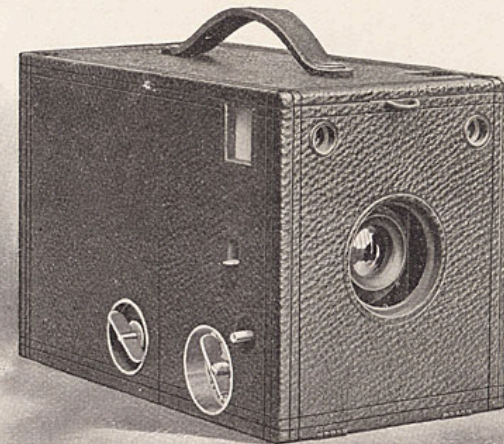
T

HIS instrument has the simplicity of the original Bulls-Eye series in combination with lens and shutter of the highest type. It is an instrument used effectively for "street work," its ever-readiness making it appeal strongly to experienced workers who, for pleasure or for business, want a camera that is instantly ready for a snap-shot and has lens and shutter of high speed.

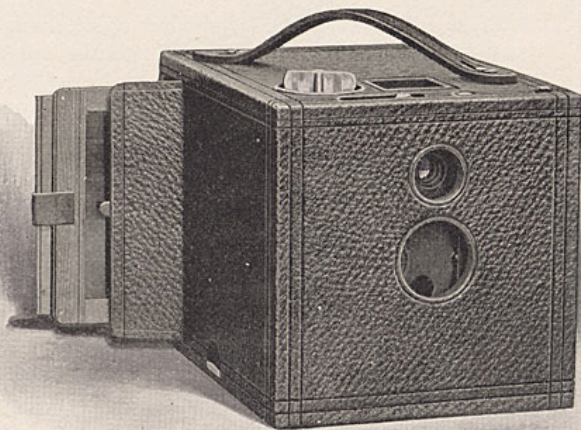
The No. 4 Bulls-Eye Special Kodak makes 4 x 5 pictures, and has a capacity for 12 exposures. It has fine Rapid Rectilinear lenses with $6\frac{1}{2}$ inch focus and a speed of $f. 8$; the Eastman Triple Action shutter described on page 15, and iris diaphragm stops for Nos. 4, 8, 16, 32, 64 and 128. Fitted with focusing scale and with brilliant finders and tripod sockets for both vertical and horizontal views. Size, $5 \times 5\frac{7}{8} \times 8\frac{3}{4}$ inches; weight, 2 lbs., 12 ounces, covered with fine black morocco and has handsomely nicked fittings.

THE PRICE.

No. 4 Bulls-Eye Special Kodak, for pictures 4 x 5 inches, rapid rectilinear lens, speed $f. 8$, Eastman triple action shutter, with iris diaphragm stops (not loaded),	\$20.00
Transparent Film Cartridge, 12 exposures, 4 x 5,90
Do., 6 exposures,45
Do., "Double-Two" Cartridge (4 exposures),30
Black Sole Leather Carrying Case, with shoulder strap,	2.00



No. 2 BULLET KODAK



T

HE Bullet Kodaks are in reality the same as the Bulls-Eye Kodaks of the corresponding sizes except that they may be used with glass plates as well as with cartridge film.

With films the No. 2 Bullet loads for 12 exposures $3\frac{1}{2} \times 3\frac{1}{2}$ inches, or it may be used with double plate holders taking $3\frac{1}{4} \times 3\frac{1}{2}$ glass plates. Used in either way it is a complete and compact instrument of great capabilities. It is fitted with the finest fixed focus, meniscus, achromatic lens, having a focal length of $4\frac{1}{2}$ inches, set of three stops, square, brilliant finder, socket for tripod screw and has the Eastman Rotary shutter described on page 13. Size of camera, $4\frac{3}{4} \times 4\frac{7}{8} \times 6\frac{1}{2}$ inches; weight 28 ozs. Beautifully finished, with nickel fittings and the finest black seal grain leather covering.

THE PRICE.

No. 2 Bullet Kodak for pictures $3\frac{1}{2} \times 3\frac{1}{2}$ inches, fitted with meniscus achromatic lens (not loaded),	\$10.00
Transparent Film Cartridge, 12 exposures, $3\frac{1}{2} \times 3\frac{1}{2}$,	.60
Do., 6 exposures,	.30
Do., "Double-Two" Cartridge (4 exposures),	.20
Double Plate Holders, $3\frac{1}{4} \times 3\frac{1}{2}$, each,	1.00
Kodak Portrait Attachment,	.50
Black Sole Leather Carrying Case, with shoulder strap,	1.25

No. 2 BULLET SPECIAL KODAK

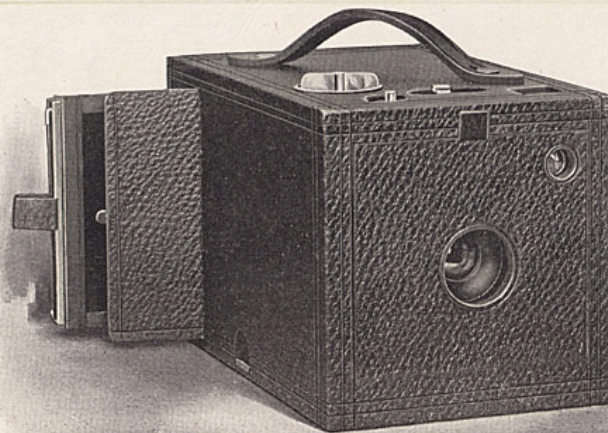
T

HIS is an instrument of wide capabilities and the finest optical quality, yet it is simple and inexpensive. The No. 2 Bullet Special Kodak has a capacity of 12 exposures $3\frac{1}{2} \times 3\frac{1}{2}$ when used with film, or may be used (with double plate holder) with $3\frac{1}{4} \times 3\frac{1}{2}$ glass plates. It has the finest Rapid Rectilinear lenses and the Eastman Triple Action shutter described on page 15. The lens has a fixed focus of $5\frac{3}{8}$ inches and is equipped with iris diaphragm stops graduated for Nos. 4, 8, 16, 32, 64 and 128.

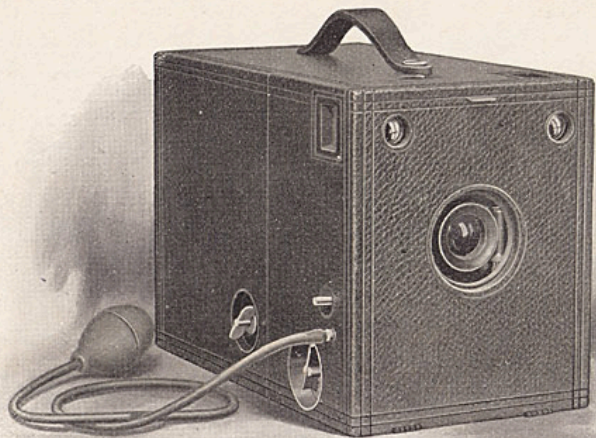
Size of camera, $4\frac{3}{4} \times 4\frac{3}{4} \times 7\frac{1}{2}$ inches; weight, 2 lbs., 2 ozs. Fitted with square, brilliant finder, socket for tripod screw and covered with fine black morocco, nickel fittings and beautiful finish. In every respect a superior instrument.

THE PRICE.

No. 2 Bullet Special Kodak for pictures $3\frac{1}{2} \times 3\frac{1}{2}$ inches, with rapid rectilinear lens, not loaded,	\$18.00
Transparent Film Cartridge, 12 exposures, $3\frac{1}{2} \times 3\frac{1}{2}$,	.60
Do., 6 exposures,	.30
Do., "Double-Two" Cartridge (4 exposures),	.20
Double Plate Holders, $3\frac{1}{4} \times 3\frac{1}{2}$, each,	1.00
Kodak Portrait Attachment,	.50
Black Sole Leather Carrying Case, with shoulder strap,	1.25



No. 4 BULLET SPECIAL KODAK



THIS is unquestionably the finest box form camera manufactured. It is of the highest grade in every detail and is a compact and convenient instrument, whether used with cartridge films or glass plates. With films it has a capacity of 12 exposures, 4 x 5, or it takes 4 x 5 double plate holders. Equipped with 6½ inch focus Rapid Rectilinear Lenses, with speed of *f.* 8. and with the Eastman Triple Action Shutter, described on page 15, adapted to use with bulb or finger release. Has brilliant finders and tripod sockets for both vertical and horizontal exposures, and has carefully adjusted focusing scale, and iris diaphragm stops graduated for Nos. 4, 8, 16, 32, 64 and 128. When used with plates, may be focused on the ground glass if desired.

Former models of the No. 4 Bullet Special used roll-holder cartridges. The model C uses Kodak Cartridges of either "Double-Two," 6 or 12 exposures. Be sure, therefore, to specify "*Model C*" when ordering film for this Kodak.

No. 4 Bullet Special Kodak for pictures 4 x 5 inches, Model C, with rapid rectilinear lens, speed <i>f.</i> 8, not loaded,	\$22.50
*Transparent Film Cartridge, 12 exposures, 4 x 5,90
*Do., 6 exposures,45
*Do., "Double-Two" Cartridge (4 exposures),30
*Double plate holders, 4 x 5, each,	1.00
*Black Sole Leather Carrying Case, with shoulder strap,	2.25

*Be sure and specify Model C when ordering.

CARTRIDGE KODAKS

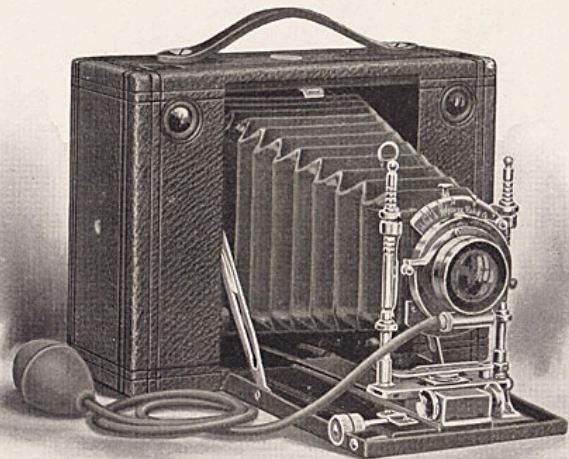
IN these instruments the Kodak idea is perfected. Based upon the daylight loading film principle they are both compact and convenient. In construction they combine lightness and strength—a combination that is only made possible by our unequalled facilities and experience, while by their great scope they open practically the entire field of photography to the amateur.

Strength and lightness are secured in the Cartridge Kodaks by a judicious combination of aluminum and hard wood—the latter being treated to a secret process of our own by which it resists atmospheric changes to a remarkable degree. We have ourselves been surprised at the rough usage and severe climatic changes which these instruments have withstood in Cuba, China, the Philippines and South Africa, and with the increased use of aluminum in the new models these instruments are even stronger than were the earlier designs. No other camera of equal capabilities can so well withstand the rough usage of travel.

The lenses furnished in the regular equipment are strictly rectilinear and very rapid, having a working speed of *f.* 8. They do not, therefore, require the most favorable conditions but enable the operator to secure good instantaneous pictures under circumstances where such pictures would be impossible with a less powerful lens. Our system of inspection insures a perfect lens with every instrument.

Wide angle lenses, the cells of which fit the regular shutter and which are easily attached, can be supplied at a very reasonable extra charge, or, if desired, the instruments may be given a special lens and shutter equipment. See page 45.

CARTRIDGE KODAKS—Continued—



The Eastman Triple Action Shutters furnished with the Cartridge Kodaks are accurate and reliable; meet every requirement of the most advanced amateurs, and have iris diaphragm stops from No. 1 to No. 128. They are described in detail on page 15.

The new Cartridge Kodaks have an improved rising front which locks automatically and also an improved side slide (rising when used for horizontal pictures) and have aluminum leather covered front boards of great strength, but which are nevertheless light and are very neat in appearance.

The glass plate attachments which are supplied (extra) for these instruments are in no way "trappy" and are attached by simply removing the back and replacing with glass plate attachment, an operation requiring but a few seconds. With plates the instrument may be focused either on the ground glass or by the focusing scale.

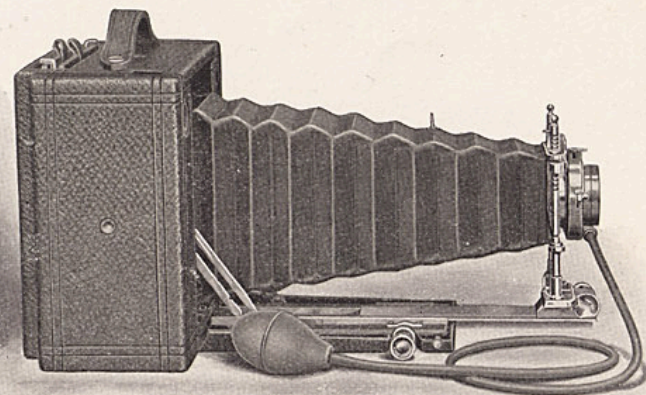
An extra extension to bellows, operated by means of rack and pinion, permits the photographing of objects at a distance of only 18 inches from the lens and also permits of the advantageous use of a tele-photo attachment.

CARTRIDGE KODAKS—Continued—

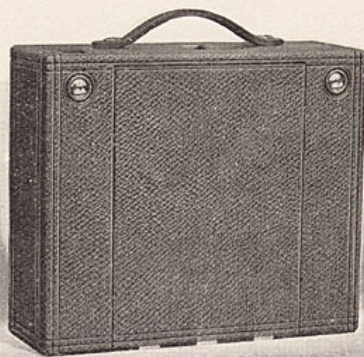
With the extra extension the ground glass is, of course, to be employed in focusing.

The Cartridge Kodaks are so constructed as to make them practical enlarging cameras, for which purpose they are particularly convenient. These instruments will make enlargements of any size, being limited only in the negatives which they will "cover." The No. 3, for instance, will make enlargements from $3\frac{1}{4} \times 4\frac{1}{4}$ or from any smaller negatives, the No. 4 from 4×5 or smaller, and the No. 5 from 5×7 or smaller.

The Cartridge Kodaks have brilliant finders and tripod sockets for both vertical and horizontal exposures, have our patent non-collapsing bellows and are covered with the finest seal grain leather. The richness of the leather and the polished mahogany set off the nicked fittings in brilliant contrast, while the correct proportioning of all the parts gives an instrument which satisfies the eye in every detail. In design, construction and finish they more than meet the demands of the most exacting experts—they leave nothing to be desired.



== CARTRIDGE KODAKS—Continued ==



== No. 3 CARTRIDGE KODAK ==

FILM AND PLATES.

For rectangular pictures, $4\frac{1}{4} \times 3\frac{1}{4}$ inches; capacity, 12 exposures without reloading; size, closed, $3\frac{1}{4} \times 5\frac{3}{4} \times 7\frac{1}{2}$ inches; weight, 2 lbs., 12 ozs.; length of focus of lens, 6 inches.

No. 3 Cartridge Kodak, Rapid Rectilinear Lens, Eastman Triple Action Pneumatic Shutter, (not loaded),	\$20.00
Transparent Film Cartridge, 12 exposures, $4\frac{1}{4} \times 3\frac{1}{4}$,	.70
Do., 6 exposures,	.35
Do., "Double-Two" Cartridge, 4 exposures,	.25
Glass Plate Adapter, with ground glass,	2.00
Double Plate Holders, each,	1.00

== No. 4 CARTRIDGE KODAK ==

FILM AND PLATES.

For rectangular pictures, $5 \times 4\frac{1}{2}$ inches; capacity, 12 exposures without reloading; size of camera, $3\frac{1}{4} \times 6\frac{3}{8} \times 8\frac{1}{4}$ inches; weight, 3 lbs. 2 oz.; length of focus of lens, $6\frac{1}{2}$ inches.

No. 4 Cartridge Kodak, with rapid rectilinear lens and Eastman Triple Action Pneumatic Shutter (not loaded),	\$25.00
Transparent Film Cartridge, 12 exposures, $5 \times 4\frac{1}{2}$,	.90
Do., 6 exposures,	.45
Do., "Double-Two" Cartridge, 4 exposures,	.30
Glass Plate Adapter, with ground glass,	2.50
Double Glass Plate Holders, each,	1.00

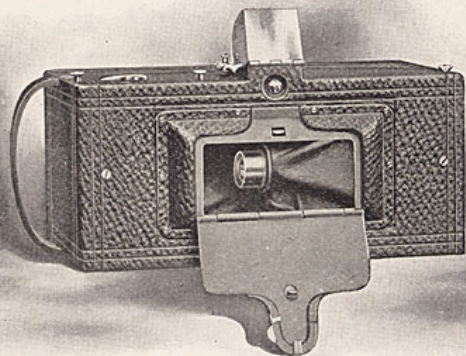
== No. 5 CARTRIDGE KODAK ==

FILM AND PLATES.

For rectangular pictures, 7×5 inches; capacity, 12 exposures without reloading; size of camera, $3\frac{3}{8} \times 8\frac{1}{2} \times 10$ inches; weight, 4 lbs., 8 ozs.; length of focus of lens, $8\frac{1}{2}$ inches.

No. 5 Cartridge Kodak with rapid rectilinear lens and Eastman Triple Action Pneumatic Shutter (not loaded),	\$35.00
Transparent Film Cartridge, 12 exposures, 7×5 ,	1.60
Do., 6 exposures,	.80
Do., "Double-Two" Cartridge, 4 exposures,	.55
Glass Plate Adapter, with ground glass,	3.00
Double Glass Plate Holders, each,	1.25

—THE PANORAM-KODAKS—



NO MECHANISM has yet been made that would accomplish every kind of work. The bicycle cannot draw an express train, nor can the giant express locomotive follow the sinuous windings of a cycle path. No one camera can occupy every niche in the house of photography. The Panoram-Kodaks occupy a niche of their own. For certain work they are unequalled; they open up a new phase in picture taking. They widen the scope and interest in landscape work. Pictures of broad landscapes, river and marine views made with these instruments have a breadth and beauty not attainable with the ordinary camera. Vertical pictures of high water falls and mountain peaks as well as horizontal pictures give most delightful effects, while the great speed of the swinging lens and shutter, combined with the wide scope of view, make them unequalled in the taking of out-door group pictures, the subjects in such cases being arranged in a semi-circle and all at an equal distance from the Kodak.

These instruments have carefully tested lenses, improved two-speed shutters, spirit levels, brilliant finders which show the sky and foreground and by means of which the entire view may be examined by simply swinging the camera, before exposure, so as to take in the full scope of view as indicated by the V shaped lines on top of camera. The Panoram-Kodaks are covered with the finest black morocco, have nicked fittings and are beautifully finished.

These instruments are, of course, not intended for taking timed exposures or interiors.

—No. 1 PANORAM-KODAK—

USES No. 1 FOLDING POCKET KODAK CARTRIDGES

For pictures, $2\frac{1}{4} \times 7$ inches; capacity, 6 exposures without reloading; size of camera, $3\frac{3}{8} \times 4\frac{1}{4} \times 7\frac{3}{8}$ inches; weight, 24 ounces; length of focus of lens, $3\frac{1}{8}$ inches; angle of view, 112°

No. 1 Panoram-Kodak (not loaded),	\$10.00
Transparent Film Cartridge, 6 exposures, $2\frac{1}{4} \times 7$ (regular No. 1 Folding Pocket Kodak Cartridge),40
Do., 3 exposures,20
Black Sole Leather Carrying Case, with shoulder strap,	1.75

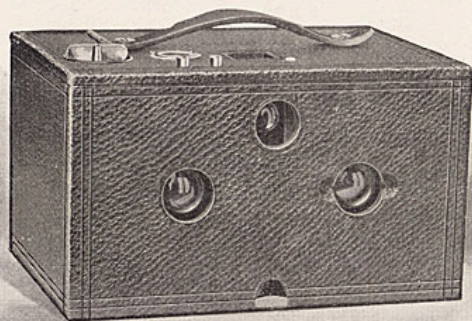
—No. 4 PANORAM-KODAK—

USES No. 4 BULLS-EYE FILM CARTRIDGES

For pictures, $3\frac{1}{2} \times 12$ inches; capacity, 5 exposures without reloading; size of camera, $4\frac{3}{4} \times 5\frac{1}{2} \times 10\frac{1}{8}$ inches; weight, 2 lbs., 14 ozs.; length of focus of lens, 5 inches; angle of view, 142° .

No. 4 Panoram-Kodak (not loaded),	\$20.00
Transparent Film Cartridge, 5 exposures, $3\frac{1}{2} \times 12$ (regular No. 4 Bulls-Eye Cartridges),90
Do., 2 exposures,45
Black Sole Leather Carrying Case, with shoulder strap,	2.00

—THE No. 2 STEREO KODAK—



SINCE its inception stereoscopic photography has had many enthusiastic devotees. That there is wonderful depth and beauty in *properly made pictures* viewed through the stereoscope cannot be gainsaid. The introduction of the Stereo Kodak puts into the hands of the amateur the means of making optically correct stereoscopic pictures, while the instruction book which will accompany each instrument covers not only the usual ground of manipulating the camera, developing, etc., but gives detailed instructions in properly printing and mounting stereo work.

These instruments may be said to resemble in model the well known Bulls-Eye cameras, but are equipped with twin Rapid Rectilinear lenses and a modification of our automatic shutter. They use the standard size No. 2 Kodak Cartridges which may be obtained the world over, and they may be loaded for one, two, three or six stereoscopic pictures. By a simple blind, which cuts off the light from one of the lenses, they may also be used for single exposures, in which case the pictures are the same in size as those made with a No. 2 Bulls-Eye Kodak, $3\frac{1}{2} \times 3\frac{1}{2}$ inches.

The Stereo Kodaks have sets of three stops, square, brilliant finder, spirit

THE No. 2 STEREO KODAK—Continued

level, socket for tripod screw, are covered with fine seal grain leather and have heavily nicked fittings. They are simple and accurate; they give correct stereoscopic effects and are high grade in every particular.

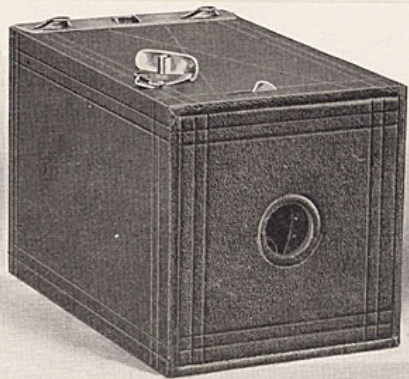
Those who are familiar with stereoscopic work will readily appreciate the advantages of film over plates, especially where a large number of prints is to be made. With plates it is necessary to cut every pair of prints apart, trim and transpose them before mounting. With film the negatives may be cut apart and transposed and any number of prints then made from them on die cut paper—the trimming and transposing of prints being entirely done away with.

The No. 2 Stereo Kodaks make the standard size ($3\frac{1}{4} \times 6$) stereoscopic pictures, having a capacity for 6 stereoscopic or twelve single exposures without reloading. Size of Kodak, $4\frac{3}{4} \times 6 \times 8\frac{1}{8}$ inches; weight, 2 lbs., 3 ozs. Length of focus of lenses, $4\frac{3}{4}$ inches.

THE PRICE.

No. 2 Stereo Kodak, fitted with pair of rapid rectilinear lenses, not loaded,	\$15.00
Transparent Film Cartridge, 6 stereo exposures (regular No. 2 Bulls-Eye 12 ex. cart.),	.60
Do., 3 exposures (No. 2 B.-E. 6 ex. cart.),	.30
Do., 2 exposures (No. 2 B.-E. "Double-Two" cart.),	.20
Black Sole Leather Carrying Case, with shoulder strap,	2.00

—No. 1 BROWNIE CAMERA—



THE Brownie Cameras have not only proven themselves to be wonderfully reliable and accurate little instruments but have demonstrated that photography—as simplified by the Cartridge system—is readily within the grasp of the school boy and the school girl. These facts have been amply proven by the high average of work submitted in the Brownie photographic contest in which only boys and girls under sixteen years of age were permitted to compete.

The No. 1 Brownie Cameras make pictures $2\frac{1}{4} \times 2\frac{1}{4}$ inches, loading in daylight for six exposures. They have $3\frac{1}{4}$ inch focus meniscus lenses, and the Eastman Rotary shutter described on page 13, the shutter, however, having one stop only. These instruments measure $3 \times 3\frac{1}{8} \times 4\frac{7}{8}$ inches and weigh 8 ounces.

V shaped lines on top of camera give the scope of view, and the novice will soon be able to judge accurately by them just what will appear in the picture, or a Brownie finder (detachable) may be provided for only 25 cents.

The Brownie finder can be attached or detached in an instant, a metal clamp clasp the top of camera and holding it securely in position.

The Brownies are strongly made, are covered with imitation leather and have nickeled fittings.

Forty-four page instruction book free with every instrument.

THE PRICE.

No. 1 Brownie Camera, for $2\frac{1}{4} \times 2\frac{1}{4}$ pictures,	\$1.00
Transparent Film Cartridge, 6 exposures, $2\frac{1}{4} \times 2\frac{1}{4}$,15
Brownie Finder, detachable,25
No. 1 Brownie Carrying Case, holds camera and finder,50
No. 1 Brownie Developing and Printing Outfit, including Dekko Paper for 24 prints,75

—No. 2 BROWNIE CAMERA—

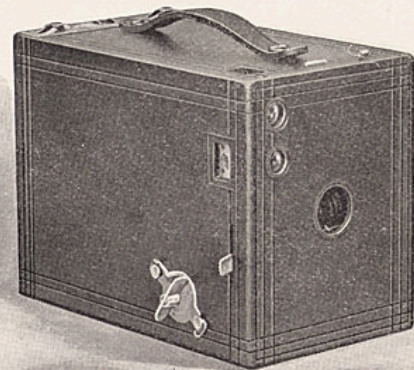
THE marvelously good work which has been accomplished by boys and girls with the No. 1 Brownie accounts for the fact that no other camera ever had so large a sale in so short a time. They were not only cheap in price, but they were simple to operate and *they made good pictures*. In the No. 2 we have extended the Brownie idea to a camera which makes pictures $2\frac{1}{4} \times 3\frac{1}{4}$ inches. It has the Eastman Rotary shutter and set of three stops described on page 13, has a fine meniscus lens of $4\frac{1}{2}$ inch focus, has two finders, one for vertical and one for horizontal exposures, and has a capacity of six exposures without reloading.

The No. 2 Brownie Cameras measure $3\frac{1}{4} \times 4 \times 5\frac{5}{8}$ inches; weigh 13 ounces; are covered with fine imitation leather; have handsomely nickeled fittings and are well made in every particular.

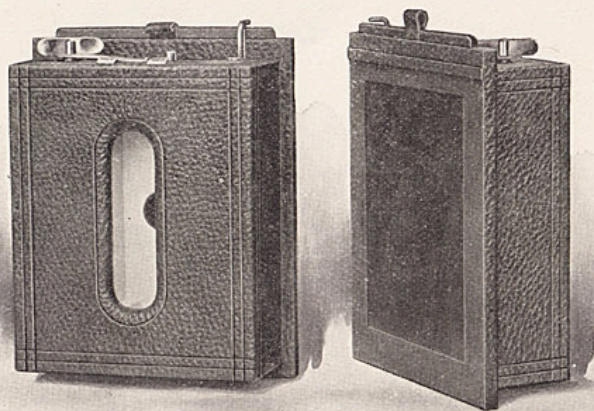
These little instruments may, if desired, be fitted with the Kodak Portrait Attachment described on page 46, by means of which they will make large bust photographs.

THE PRICE.

No. 2 Brownie Camera, for $2\frac{1}{4} \times 3\frac{1}{4}$ pictures,	\$2.00
Transparent Film Cartridge, for 6 exposures, $2\frac{1}{4} \times 3\frac{1}{4}$,20
No. 2 Brownie Carrying Case, with shoulder strap,75
No. 2 Brownie Portrait Attachment,50
A B C Developing and Printing Outfit, see page 49,	1.50



THE CARTRIDGE ROLL HOLDER



W

are now prepared to furnish Cartridge System Roll Holders which can be fitted to any ordinary camera by an intelligent cabinet maker, or we will do the fitting for a small charge, varying, of course, according to the camera and the work necessary.

The Cartridge Roll Holders load in daylight and are well made of hard wood, with fine seal grain leather covering (except No. 4 horizontal, which is hard wood finish), have nickel fittings, and are handsomely finished.

SPECIAL SPOOLS FOR CARTRIDGE ROLL HOLDERS.

In ordering cartridges, be sure and state that they are for Cartridge Roll Holder, giving length of spool and size of roll holder, as the film and paper are wound differently from those used in the Bullets, Bulls-Eyes, etc. Kodak spools will not fit Cartridge Roll Holders.

THE PRICE.

No. 3, Vertical, for $4\frac{1}{4} \times 3\frac{3}{4}$ pictures, $4\frac{1}{4}$ inch spool,	\$5.00
No. 4 (4 x 5) Cartridge Roll Holders, (specify whether vertical or horizontal),	5.00
No. 5 Vertical Cartridge Roll Holders, 7 inch spool,	6.50

TRANSPARENT FILM CARTRIDGES.

$4\frac{1}{4}$ inch, for No. 3 Cartridge Roll Holder, 12 exposures,70
4 inch, for No. 4 Horizontal Cartridge Roll Holder, 12 exposures,90
5 inch, for No. 4 Vertical Cartridge Roll Holder, 12 exposures,90
7 inch, for No. 5 Cartridge Roll Holder, 12 exposures,	1.60

SPECIAL LENS AND SHUTTER EQUIPMENTS

I

n place of the excellent regular equipment with which we furnish the Cartridge Kodaks and the No. 3 Folding Pocket Kodaks these instruments can be equipped with the new Bausch & Lomb Plastigmat lenses if the customer so desires. We guarantee these lenses to be fully the equal of any Anastigmat lenses made by other manufacturers.

THE PRICE.

No. 3 Folding Pocket Kodak, Rapid Rectilinear lens, equivalent focus, 5 inches; speed, <i>f.</i> 8; and B. & L. Automatic Shutter,*	\$27.50
No. 3 Folding Pocket Kodak, Bausch & Lomb Plastigmat lens No. 1, equivalent focus, 5 inches; speed <i>f.</i> 6.8; and B. & L. Automatic Shutter,*	59.50
No. 3 Cartridge Kodak, Bausch & Lomb Plastigmat lens No. 1, equivalent focus, 5 inches; speed <i>f.</i> 6.8; and B. & L. Automatic Shutter,*	57.00
No. 4 Cartridge Kodak, Bausch & Lomb Plastigmat lens No. 2, equivalent focus, $6\frac{1}{4}$ inches; speed, <i>f.</i> 6.8; and B. & L. Automatic Shutter,*	67.50
No. 5 Cartridge Kodak, Bausch & Lomb Plastigmat lens No. 3, equivalent focus, $7\frac{1}{2}$ inches; speed, <i>f.</i> 6.8; and B. & L. Automatic Shutter,*	84.50

*A full description of the B. & L. Automatic Shutter is given on page 16.

WIDE ANGLE LENSES.

Regularly equipped Cartridge Kodaks may be fitted with our wide angle Kodak lenses at a trifling cost. These lenses are mounted in cells which fit the Eastman Triple Action shutters, and are, therefore, interchangeable with the Rapid Rectilinear lenses furnished with the Cartridge Kodaks. The W. A. Kodak lenses are rectilinear, have a speed of *f.* 16 and are carefully tested. With each one we furnish a leather case and a properly graduated focusing scale for attaching to the camera bed.

THE PRICE.

No. 3 ($3\frac{3}{4} \times 4\frac{1}{4}$) Wide Angle Kodak Lens, equivalent focus, $3\frac{1}{2}$ inches; speed, <i>f.</i> 16,	\$5.00
No. 4 (4 x 5) Wide Angle Kodak Lens, equivalent focus $4\frac{1}{2}$ inches; speed, <i>f.</i> 16,	5.00
No. 5 (5 x 7) Wide Angle Kodak Lens, equivalent focus, $5\frac{1}{2}$ inches; speed, <i>f.</i> 16,	7.50

KODAK PORTRAIT ATTACHMENTS

THE Kodak Portrait Attachments greatly increase the value of the small fixed focus instruments by adapting them to the making of large bust pictures. By their use any one of the cameras named below will make head and shoulder pictures equaling in size an ordinary mantello photograph. These attachments are simply extra lenses which slip on over the lens hood or are inserted in the opening in the front board of camera as the case may be.

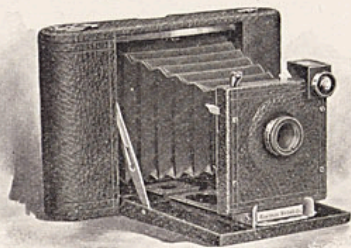
They in no way affect the operation of the Kodak except that they make it cut sharp at a distance of three and one-half feet and consequently throw more distant objects out of focus. They are, therefore, to be used for bust portrait work only. The possibilities of the smaller Kodaks in portraiture are attractively set forth in "Pocket Kodak Portraiture," an instructive little booklet profusely illustrated by Rudolf Eickemeyer, Jr., and containing a number of his most charming studies of child life. Free at any Kodak dealer's, or by mail.

Kodak Portrait Attachments are made for the following instruments:

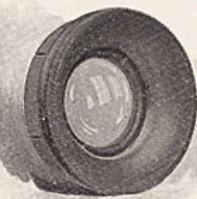
No. 1 Folding Pocket Kodaks, No. 1A Folding Pocket Kodaks, No. 2 Folding Pocket Kodaks, No. 3 Folding Pocket Kodaks, No. 2 Bulls-Eye Kodaks, No. 2 Bulls-Eye Special Kodaks, No. 2 Bullet Kodaks, No. 2 Bullet Special Kodaks, No. 2 Flexo Kodaks, No. 2 Brownie Cameras.

Price of attachment to fit either of above instruments, 50 cents.

Be sure and give exact designation of instrument when ordering.



NO. 2 FOLDING POCKET KODAK WITH PORTRAIT ATTACHMENT.



KODAK PORTRAIT ATTACHMENT FOR NO. 2 BULLS-EYE.

BICYCLE CARRYING CASES

ALL Kodaks being complete and self-contained when closed, carrying cases are not an essential and are not therefore (except with the Kodak de Luxe) included in the price. Many of our customers, however, prefer to carry their instruments in cases, and for this purpose we manufacture a very superior line of hand-sewed cases from the best black sole leather.

The Folding Pocket Kodak Cases are so made that they may be used as hand cases, or may be securely and conveniently attached to a bicycle by means of our special clamps.

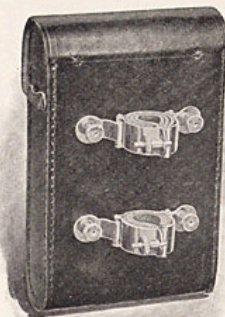


AS A HAND CASE.

COMBINATION HAND AND CYCLE CASES FOR FOLDING POCKET KODAKS.

The No. 1, No. 1 A and No. 2 Folding Pocket Kodak cases are attached to the bicycle by means of a single clamp. The No. 3 Folding Pocket Kodak cases being somewhat larger are fastened by means of two clamps.

Carrying Case, with shoulder strap, for No. 1, No. 1 A or No. 2 Folding Pocket Kodak, (always specify in order whether for No. 1, No. 1 A or No. 2),	\$1.25
Clamp for carrying either of above cases on head of bicycle, (fits any tubing from $\frac{7}{8}$ to $1\frac{1}{4}$),	.50
Carrying Case, with shoulder strap, for No. 3 Folding Pocket Kodak,	1.25
Pair Clamps for carrying above case on head of bicycle (fit any tubing from $\frac{7}{8}$ to $1\frac{1}{4}$),	1.00



AS A BICYCLE CASE—SHOWING CLAMPS ATTACHED.

BICYCLE CARRYING CASES—Continued

STYLE A BICYCLE CASES.

FOR No. 2 BULLS-EYE, BULLET SPECIAL AND BULLS-EYE SPECIAL KODAKS.

These cases are strongly made of wood ; covered with fine grain leather and are lined with cloth and fitted with springs on the inside which take up the vibration of the wheel and prevent injury to the camera. They attach securely to bicycle head by means of two simple thumb-screw clamps, which fit any tubing from $\frac{7}{8}$ inch to $1\frac{1}{4}$ inches, both inclusive.

*Bicycle Carrying Case, Style A, for No. 2 Bulls-Eye, Bullet Special and Bulls-Eye Special Kodaks, \$2.00

STYLE B BICYCLE CASES.

FOR No. 2 BULLS-EYE, BULLET SPECIAL AND BULLS-EYE SPECIAL KODAKS.

This case is made of the best black sole leather, hand-sewed, and is designed to hang under the saddle, attaching by means of straps to the rear forks. It makes a safe and convenient carrier for the camera.

*Bicycle Carrying Case, Style B, for No. 2 Bulls-Eye, Bullet Special and Bulls-Eye Special Kodaks, \$1.50

NOTE—This case is impracticable for very short riders, as it requires a space of 6 inches in the clear between the mud-guard and the saddle spring.

*In ordering specify whether for No. 2 Bulls-Eye, Bullet Special or Bulls-Eye Special.

CARTRIDGE KODAK BICYCLE CASES.

These cases are strongly made of wood ; covered with fine grain leather and are lined with cloth and fitted with springs on the inside which take up the vibration of the machine and prevent injury to the camera. They may be suspended from top bar of man's machine or secured to bicycle head by means of the two simple thumb-screw clamps which fit any tubing, from $\frac{7}{8}$ inch to $1\frac{1}{4}$ inches, both inclusive.

No. 3 Cartridge Kodak Bicycle Case, \$2.25
 No. 4 Cartridge Kodak Bicycle Case, 2.50
 No. 5 Cartridge Kodak Bicycle Case, 3.25

DEVELOPING AND PRINTING OUTFITS



EASTMAN'S A B C DEVELOPING AND PRINTING OUTFIT includes every requisite for developing, printing and finishing 24 4 x 5, 2½ x 4¼ or 3¼ x 4¼ or 96 1½ x 2½ pictures.

1 Eastman Improved Candle Lamp,	\$0.25	½ lb. Hyposulphite Soda,	\$0.07
1 4 x 5 Printing Frame,25	½ oz. Bromide Potassium,10
“ Glass for do.,05	2 doz. 4 x 5 Solio Paper,25
1 Glass Beaker,12	2 ozs. Solio Toning Solution,15
1 Stirring Rod,05	1 oz. Glycerine,05
4 4½ x 5½ Developing Trays,40	Instruction Book,10
½ doz. Developing Powders,25		
			\$2.09

Price, complete, neatly packed, \$1.50

EASTMAN'S BULLS-EYE DEVELOPING AND PRINTING OUTFIT, complete, for developing and printing 12 pictures 3½ x 3½. Similar to above outfit, but containing 1 doz. 3½ x 3½ Solio paper and smaller quantities of chemicals.

Price, complete, neatly packed, \$1.00

SPECIAL 5 x 7 DEVELOPING AND PRINTING OUTFIT, complete, for developing and printing 24 pictures 5 x 7.

Price, complete, neatly packed, \$2.00

BROWNIE DEVELOPING AND PRINTING OUTFIT, complete, for developing 24 pictures 2¼ x 2¼ and printing on Dekko Paper,75

NOTE—These outfits cannot be shipped by mail.

TRIPODS

EASTMAN FOLDING HEAD TRIPOD.

FOR 4 X 5 CAMERAS OR SMALLER.

By the simplest device, all the inconveniences of the old fashioned tripod have been overcome. Other tripods are either awkwardly bulky when closed or else the head has to be removed from the legs. In this new tripod the head itself folds and the tripod then makes a compact, rectangular package. There are no loose parts. There is no complicated mechanism.

The accompanying illustration shows the working in detail. The brass plate upon which the camera rests is covered with leather, thus protecting the instrument. All of the parts being accurately made, this tripod is exceedingly rigid in spite of its small size and light weight. The wooden parts are of selected maple, handsomely finished.



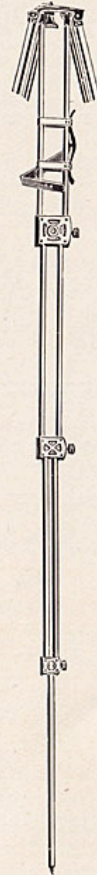
SHOWING HEAD UN-
FOLDED READY TO
RECEIVE CAMERA.

Folds in four sections; has leather handle for carrying. Length, folded, 17 inches; length, extended, 52½ inches; weight, 25 ounces.

Price, \$3.50



SHOWING HEAD FOLDED AND TRIPOD
CLOSED FOR CARRYING.



TRIPODS—Continued

THE BULLS-EYE TRIPOD.—TWO SECTIONS.

An aluminum revolving head holds the socket screw and seats it in place in camera when turned, thus doing away with tripod screw. Made of spruce with brass fittings. Leather handle for carrying. For 4 x 5 camera or smaller.

Price, \$ 1.50

EASTMAN'S FEATHER TRIPOD.—FOUR SECTIONS.

An aluminum revolving head holds the socket screw and seats it in place in camera when turned, thus doing away with tripod screw. Legs fold in four sections. Length, closed, 14½ inches. Weight, in spruce, 17½ ounces; cherry, 20½ ounces. Brass fittings—superb finish. For 4 x 5 cameras or smaller.

Eastman's Feather Tripod, spruce,	\$ 3.00
Do., cherry,	3.25
Do., mahogany finish,	3.50
Black Sole Leather Carrying Case,	1.50

THE EASTMAN TRIPOD.—THREE SECTIONS.

No. 1, Spruce, for cameras up to 6½ x 8½; weight, 1 lb., 10 ozs.,	\$ 2.25
No. 1, Maple, for cameras up to 6½ x 8½; weight, 2 lbs., 2 ozs.,	2.25

NOTE—When kind of wood is not specified, we will furnish in maple.

THE VICTOR TRIPOD.—TWO SECTIONS.

No. 1, Spruce, for cameras up to 6½ x 8½; weight, 1 lb. 11 ozs.,	\$ 1.50
No. 1, Maple, for cameras up to 6½ x 8½; weight, 2 lbs. 3 ozs.,	1.50

NOTE—When kind of wood is not specified, we will furnish in maple.

“ADJUSTABLE” TRIPOD HEAD.

By the use of our “Adjustable” Tripod Head, the camera can be tilted to any desired angle and fastened in position without moving the tripod legs.

No. 1. For the Eastman Tripod No. 1 and Victor No. 1, \$ 1.25

In ordering always give the name and number of Tripod for which you want adjustable head.

The following Tripods may be ordered with adjustable and without regular head:

Eastman No. 1,	\$ 3.00
Victor No. 1,	2.25

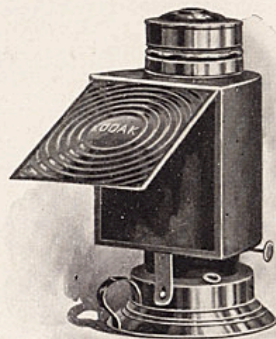
“ADJUSTABLE JR.” TRIPOD HEAD.

No. 1 “Adjustable Jr.” for cameras up to 4 x 5; can be used on Folding Head, Bulls-Eye, or Feather Tripods,	\$ 1.00
No. 2 “Adjustable Jr.” for cameras up to 5 x 8; fits any ordinary Tripod,	1.50

EASTMAN'S KODAK DARK-ROOM LAMP

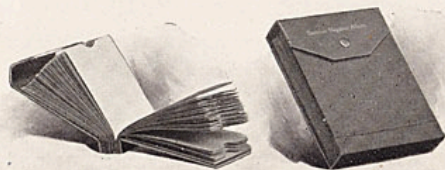
THIS lamp is well made and safe. It is equipped with improved burner carrying extra broad wick, and has new ventilating top, ensuring a bright, steady flame. It is the safest dark room lamp made, being fitted with both ruby and orange glass. The flame can be controlled from the outside, and it is fitted with adjustable shield to protect the eyes from the light and throw it directly on the work.

No. 1 Improved Kodak Dark-Room Lamps, 1 in. wick, each, . . . \$ 1.50
 No. 2 do., $\frac{5}{8}$ in. wick, each, . . . 1.00



EASTMAN'S FILM NEGATIVE ALBUMS

HOW to preserve film negatives is a question that has been successfully answered by the introduction of Eastman's Film Negative Albums. Each album contains 100 pockets made of strong paper and consecutively numbered from 1 to 100, and an index on white paper, ruled and numbered for 100 entries. They thus provide a perfectly safe means of keeping the negatives in such a way that the one desired can always be instantly found.



PRICE.

Eastman's Negative Albums for 100 negatives $3\frac{1}{2} \times 3\frac{1}{2}$ or smaller, . . . \$.75
 Eastman's Negative Albums for 100 negatives $3\frac{1}{4} \times 4\frac{1}{4}$ or 4×5 , . . . 1.00
 Eastman's Negative Albums for 100 negatives 5×7 or smaller, . . . 1.50

KODAK ALBUMS

THESE albums are intended for those who want a good, substantial, permanent book for preserving pictures of more than passing interest. They are, therefore, well made and substantially covered. They are made on the loose leaf, lace system and have plain gray leaves, of good heavy stock, 20 leaves to the album. There is no printing on the leaves. The covers are of cloth in a delicate gray tint with the title "The Kodak Book" printed in gold leaf.

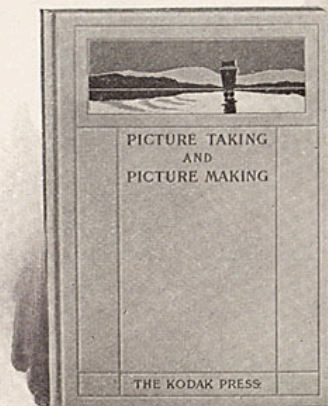
PRICE LIST.

No. 101. Size of leaf $5 \times 6\frac{1}{2}$, 5 inches at back, 20 leaves. Capacity, 40, 4×5 ; 160, $1\frac{1}{2} \times 2$; 80, $2\frac{1}{4} \times 2\frac{1}{4}$; 80, $1\frac{5}{8} \times 2\frac{1}{2}$; 40, $3\frac{1}{4} \times 4\frac{1}{4}$; or 40, $3\frac{1}{2} \times 3\frac{1}{2}$ prints, . . . \$1.00
 No. 102. Size of leaf 6×5 , 6 inches at back, 20 leaves. Capacity, 80, $1\frac{5}{8} \times 2\frac{1}{2}$; 80, $2\frac{1}{4} \times 3\frac{1}{4}$; 80, $2\frac{1}{4} \times 2\frac{1}{4}$; 120, $1\frac{1}{2} \times 2$; or 40, $3\frac{1}{2} \times 3\frac{1}{2}$ prints, . . . 1.00
 No. 103. Size of leaf 7×6 , 7 inches at back, 20 leaves. Capacity, 80 $2\frac{1}{2} \times 4\frac{1}{4}$; 160, $1\frac{1}{2} \times 2$ prints. Also appropriate for Brownies or No. 1 Folding Pocket Kodak prints, . . . 1.10
 No. 104. Size of leaf $9\frac{1}{4} \times 6\frac{1}{2}$, $9\frac{1}{4}$ inches at back, 20 leaves. Capacity, 80, 4×5 ; 80, $3\frac{1}{4} \times 4\frac{1}{4}$; 120, $2\frac{1}{2} \times 4\frac{1}{4}$; 240, $1\frac{5}{8} \times 2\frac{1}{2}$; or 80, $3\frac{1}{2} \times 3\frac{1}{2}$ prints, . . . 1.25
 No. 105. Size of leaf $6\frac{1}{2} \times 9$, 6 inches at back, 20 leaves. Capacity, 40, 5×7 ; or 80 No. 1 Panoram-Kodak Prints, . . . 1.25

"PICTURE TAKING AND PICTURE MAKING"

ASIMPLE and practical book for the beginner, yet full of "meat" for the advanced amateur. There are four valuable contributed articles: "Platinum Printing," by Alfred Stieglitz; "The Gum Bi-Chromate Process," by M. Robert Demachy; "Sensitizing and Use of Plain Papers" by Bernard Alfieri, and "Carbon Printing," by James A. Sinclair.

Printed on heavy coated paper, beautifully illustrated, 120 pages, cardboard covers, . . . \$.50
 Cloth bound, . . . 1.00



EASTMAN'S PHOTOGRAPHIC PAPERS

SOLIO PAPER.

A rapid, glossy printing-out paper.

Size	Per Pkg. 2 doz.	½ Gross.	Gross.
2½ x 2½,	\$.20	\$.60	\$1.00
2¼ x 3¼,	.20	.60	1.00
2½ x 4¼,	.20	.60	1.00
3½ x 3½,	.20	.60	1.15
3¼ x 4¼,	.20	.60	1.15
4 x 5,	.25	.70	1.25
3¼ x 6, (Stereo)	.25	.70	1.25
2¼ x 7, (No. 1 Panoram-Kodak)	.25	.70	1.25
	Per Doz.		
5 x 7,	.30	1.60	2.65
3½ x 12, (No. 4 Panoram-Kodak)	.35	2.00	3.50

SECONDS.—4 x 5 (trimmed) seconds, \$1.00 per gross.

SOLIO Combined Toning and Fixing Sol., per 8 oz. bottle, 50 cts.

Do., 4 oz., bottle (20 cts. extra, postpaid), 30 cts.

DEKKO PAPER.

A quick printing development paper, printing by either artificial light or daylight and developing in subdued daylight or subdued artificial light. No dark-room required. Beautiful platinum-like effects.

Size.	Doz.	½ Gross.	Gross.
2¼ x 3¼,	\$.15	\$.60	\$1.00
2½ x 4¼,	.15	.70	1.25
3½ x 3½,	.15	.80	1.50
3¼ x 4¼,	.15	.80	1.50
4 x 5,	.25	1.10	2.00
3¼ x 6, (Stereo)	.25	1.10	2.00
2¼ x 7, (No. 1 Panoram-Kodak)	.15	.80	1.50
5 x 7,	.35	2.00	3.50
3½ x 12, (No. 4 Panoram-Kodak)	.45	2.50	4.50

Brownie Dekko, one grade only, per pkg. 2 doz., 2¼ x 2¼, 15 cts.

MADE IN FOUR GRADES.

Carbon Matte,	Egg-Shell Matte,	Plain Matte,	Rough Matte.
Eastman's Dekko Developer Powders, per dozen,			\$.50
Do., per half dozen,			.25
Do., per pkg., 5 powders in hermetically sealed glass tubes,			.25

EASTMAN'S PHOTOGRAPHIC PAPERS—Continued

EASTMAN'S SEPIA PAPER.

PACKED IN AIR-TIGHT, SEALED TUBES.

As simple to handle and much quicker than Blue Print paper. Especially desirable with negatives giving broad, sketchy effects.

	2 Doz.	½ Gross.
2½ x 2½,	\$.15	\$.40
2¼ x 3¼,	.15	.40
2½ x 4¼,	.15	.40
3½ x 3½,	.15	.40
3¼ x 4¼,	.15	.40
4 x 5,	.20	.50
3¼ x 6, (Stereo)	.20	.50
2¼ x 7,	.20	.50
	1 Doz.	
5 x 7,	.20	.90
3½ x 12,	.20	1.00

EASTMAN'S "FERRO-PRUSSATE" PAPER.

PACKED IN AIR-TIGHT, SEALED TUBES.

This is not a cheap commercial "Blue Print" paper, but a paper made purposely for printing from the finest negatives with a view to retaining all their delicacy and detail.

Size.	Price per 2 doz.	Size.	Price per 2 doz.
2½ x 2½,	\$.16	4 x 5,	\$.20
2¼ x 3¼,	.16	3¼ x 6, (Stereo)	.20
2½ x 4¼,	.16	2¼ x 7,	.20
3½ x 3½,	.16	5 x 7,	.35
3¼ x 4¼,	.16	3½ x 12,	.40

EASTMAN'S W. D. PLATINUM PAPER.

PACKED IN AIR-TIGHT, SEALED TUBES.

A pure platinum paper, requiring only water development, without chemicals. Clears in water and acid. Simple to handle, yet produces effects equal in beauty to any photographic process.

Two Grades—"Smooth" and "Rough."

Size.	Price per Doz.	Size.	Price per Doz.
2¼ x 3¼,	\$.15	3¼ x 6, Stereo,	\$.35
2½ x 4¼,	.20	2¼ x 7,	.30
3½ x 3½,	.20	5 x 7,	.60
3¼ x 4¼,	.25	3½ x 12,	.70
4 x 5,	.35		

EASTMAN'S PHOTOGRAPHIC PAPERS—Continued

EASTMAN'S PERMANENT BROMIDE PAPERS

The amateur can readily make enlargements from his own negatives by the use of Eastman's Bromide Paper and the Bulls-Eye Enlarging Camera described below, or can improvise an enlarging apparatus. See page 11.

Illustrated Booklet, "Bromide Enlarging with a Kodak," 10c.

ROYAL, STANDARD, PLATINO, ENAMELED AND MATTE-ENAMEL.

Size.	Per Doz.	Size.	Per Doz.
2¼ x 3¼,	.15	10 x 12,	\$1.20
3¼ x 4¼,	.15	11 x 14,	1.60
4 x 5,	.25	14 x 17,	2.40
3¼ x 6, (Stereo)	.25	16 x 20,	3.20
5 x 7,	.35	18 x 22,	4.00
5 x 8,	.40	20 x 24,	4.80
6½ x 8½,	.60		
8 x 10,	.80		

Other sizes in proportion.

TWO GRADES—HARD AND SOFT.

The Bromide Papers (except Royal) are made in two grades, "Hard" and "Soft." The "Hard" paper should be used for printing or enlarging by sunlight, while the "Soft" paper should be used for work with artificial light.

"Standard" is furnished in three weights: A, thin smooth—B, heavy smooth—C, heavy rough.

"Platino" is furnished in A, thin smooth, or C, heavy rough.

The "Royal" is furnished in "smooth" or "rough."

BULLS-EYE ENLARGING CAMERAS.

The Bulls-Eye Enlarging Camera is adapted to making 4 x 5 Bromide enlargements from 1½ x 2 negatives, and 6½ x 8½ enlargements from 2¼ x 3¼ and 3½ x 3½ negatives.

Bulls-Eye Enlarging Camera, double holder for paper,	\$7.50
Do., with single holder for paper,	6.00
Extra inside Kit to hold 4 x 5 paper,	.35

EASTMAN'S EMBOSSEING BOARDS.

For giving plate sunk centers with 2¼ x 3¼, 2½ x 4¼, 3½ x 3½, 3¼ x 4¼, 4 x 5 and 5 x 7 unmounted prints on matte surface papers. These boards provide in each case for suitable margin.

Price, each,	\$.25
--------------	--------

When ordering always give size of prints to be used with.

PLATES, CHEMICALS, FRAMES

EASTMAN'S DRY PLATES.

EXTRA RAPID FOR INSTANTANEOUS WORK.

	Per Doz.
3¼ x 3½ inches, (for No. 2 Bullet and Bullet Special),	\$.35
3½ x 3½ inches,	.35
3¼ x 4¼ inches,	.45
4 x 5 inches,	.65
5 x 7 inches,	1.10

EASTMAN'S DOUBLE COATED NON-HALATION PLATES

3¼ x 4¼ inches, per doz.,	\$.55
4 x 5 inches, per doz.,	.80
5 x 7 inches, per doz.,	1.40

LANTERN SLIDE PLATES, ETC.

Plates for making Lantern Slides, per dozen,	\$.70
Cover Glass for Lantern Slides, per dozen,	.35

CHEMICALS.

Eastman's Hydrochinon Developer Powders, per dozen,	\$.50
Do., per half dozen,	.25
Do., per pkg. 5 powders in sealed glass tubes,	.25
Eastman's Pyro Developer Powders, per dozen,	.50
Do., per half dozen,	.25
Do., per pkg. 5 powders in sealed glass tubes,	.25
Eastman's Dekko Developer Powders, per dozen,	.50
Do., per half dozen,	.25
Do., per pkg. 5 powders in sealed glass tubes,	.25
Hypo-sulphite of Soda, pulverized, per pound,	.10
Bromide Potassium, per ounce,	.15
Citric Acid, 4 ounce bottle,	.30
Solio Toning Solution, per 8 ounce bottle,	.50
Solio Toning Solution in 4 ounce bottles as follows: 4 ounces Toning Solution (20c. extra postpaid),	.30
Solio Hardener, per 8 ounce bottle,	.35

PRINTING FRAMES.

3½ x 3½, opens two-thirds,	\$.25
3¼ x 4¼, opens two-thirds,	.25
4 x 5, opens two-thirds,	.25
5 x 7, opens two-thirds,	.35
3½ x 12, for No. 4 Panoram-Kodak, opens in 3 sections,	.75
2¼ x 7, for No. 1 Panoram-Kodak, opens in 2 sections,	.30
Sp'c'l Brownie Frame for 2¼ x 2¼ Developing paper only,	.10

KODAK MOUNTS

		2 1/4 x 2 1/4	1 5/8 x 2 1/2	2 1/4 x 3 1/4	2 1/2 x 4 1/4	3 1/2 x 3 1/2	3 1/4 x 4 1/4	4 x 5	5 x 7	STYLE
White center, Queen's gray border, enameled face, plain back, . . .	Per Doz. " 100 " 1000			\$.15 1.05 10.30		\$.20 1.45 14.20	\$.20 1.45 14.20	\$.25 1.70 17.00	\$.40 3.20 32.00	A.
White or Queen's gray embossed border, straight edges, . . .	Per Doz. " 100 " 1000			.10 .75 7.45	\$.15 .85 8.50	.15 .95 9.25	.15 .95 9.25	.20 1.30 12.75	.30 2.30 22.75	B. W. (white) B. G. (gray)
White, plain straight edge, round corners, . .	Per Doz. " 100 " 1000							.10 .45 4.25	.15 .90 8.90	C.
Primrose, plain beveled edge, round corners, . .	Per Doz. " 100 " 1000							.10 .65 6.30	.15 1.05 10.30	D.
Primrose, gilt beveled edge, round corners, . .	Per Doz. " 100 " 1000							.10 .75 7.45	.20 1.45 14.20	E.
Maroon, gold beveled edge, round corners, . .	Per Doz. " 100 " 1000							.20 1.50 14.75	.40 3.20 32.00	F.
Scotch Gray, beveled edges,	Per Doz. " 100 " 1000			.10 .60 6.00	.10 .75 7.45	.10 .80 7.80	.10 .80 7.80	.15 .95 9.25	.25 1.80 17.75	H.
Ivy Green, beveled edges,	Per Doz. " 100 " 1000			.10 .60 6.00	.10 .75 7.45	.10 .80 7.80	.10 .95 9.25	.15 1.80 17.75	.25 1.80 17.75	I.
Carbon Black, beveled edges,	Per Doz. " 100 " 1000			.10 .60 6.00	.10 .75 7.45	.10 .80 7.80	.10 .95 9.25	.15 1.80 17.75	.25 1.80 17.75	J.
Royal Brown, beveled edges,	Per Doz. " 100 " 1000			.10 .60 6.00	.10 .75 7.45	.10 .80 7.80	.10 .95 9.25	.15 1.80 17.75	.25 1.80 17.75	K.
Scotch Gray, square edges,	Per Doz. " 100 " 1000	\$.07 .30 2.80	.07 .30 2.80	.08 .50 5.00	.09 .60 6.00	.10 .65 6.40	.10 .65 6.40	.12 .80 7.80	.20 1.60 15.00	L.
Ivy Green, square edges,	Per Doz. " 100 " 1000	.07 .30 2.80	.07 .30 2.80	.08 .50 5.00	.09 .60 6.00	.10 .65 6.40	.10 .65 6.40	.12 .80 7.80	.20 1.60 15.00	M.
Carbon Black, square edges,	Per Doz. " 100 " 1000	.07 .30 2.80	.07 .30 2.80	.08 .50 5.00	.09 .60 6.00	.10 .65 6.40	.10 .65 6.40	.12 .80 7.80	.20 1.60 15.00	N.
Royal Brown, square edges,	Per Doz. " 100 " 1000	.07 .30 2.80	.07 .30 2.80	.08 .50 5.00	.09 .60 6.00	.10 .65 6.40	.10 .65 6.40	.12 .80 7.80	.20 1.60 15.00	O.

When ordering state quantity, style (indicating by letter) and size prints with which to be used. Bear in mind that style B is made in either white or Queen's gray. Order "style B. W." for white or "style B. G." for gray. When color is not specified we will furnish white.

STEREO-KODAK MOUNTS.

Gray, for 3 1/4 x 6, per doz.,	\$.09
Gray, for 3 1/4 x 6, per 100,60
Gray, for 3 1/4 x 6, per 1000,	6.00

MOUNTS—Continued

PANORAM-KODAK MOUNTS.

No. 4, for 3 1/2 x 12 prints, (style I), Ivy Green,	{	Per Doz.	\$.35
(style K) Royal Brown, beveled edges,		" 100	2.50
		" 1000	25.00
No. 1, for 2 1/4 x 7 prints, (style I), Ivy Green,	{	Per Doz.	\$.10
(style K) Royal Brown, beveled edges,		" 100	.75
		" 1000	7.45

FLASH SPECIALTIES.

Eastman's Elash Lamp,	\$1.25
Eastman's Flash Powder, per ounce bottle,60
Eastman's No. 1 Flash Cartridges, per pkg. 1/2 doz.,60
Eastman's No. 2 Flash Cartridges, per pkg. 1/2 doz.,40
Eastman's No. 3 Flash Cartridges, per pkg. 1/2 doz.,25
Eastman's Flash Sheets per pkg., 1/2 doz.,25
Illustrated Booklet, "Pictures by Flashlight,"10

EASTMAN'S FILM CUTTING BOARDS.

For cutting up Cartridge Films for development. Hold paper and film securely. Simple and accurate. For Kodak Cartridges only

No. 1, 2 1/4 x 3 1/4 (also for No. 1 Panoram),	\$.25
No. 1 A, 2 1/2 x 4 1/4,25
No. 2, 3 1/2 x 3 1/2,25
No. 3, Hor., 3 1/4 x 4 1/4, (3 1/4 inch spool),25
No. 3, Ver., 4 1/4 x 3 1/4, (4 1/4 inch spool),25
No. 4, Hor., 4 x 5, (4 inch spool),25
No. 4, Vert., 5 x 4, (5 inch spool),25
No. 5, Vert., 7 x 5, (7 inch spool),35

TRAYS.

Paper Developing Trays, for 4 x 5, each,	\$.10
Paper Developing Trays, for 5 x 7, each,15
Hard Rubber Trays, for 4 x 5, each,27
Hard Rubber Trays, for 5 x 7, each,50
"Bulls-Eye" Composition Trays, for 3 1/2 x 3 1/2, each,18
"Bulls-Eye" Composition Trays, for 4 x 5, each,25
"Bulls-Eye" Composition Trays, for 5 x 7, each,50
"Bulls-Eye" Composition Trays, 3 x 8 1/2,40
"Bulls-Eye" Composition Trays, 4 1/2 x 14,90

SPECIAL FERROTYPE PLATES.

10 x 14, Ferrotypes Plates, Light, each,	\$.15
10 x 14, Ferrotypes Plates, Heavy, each,20
18 x 24, Ferrotypes Plates, Heavy, each,75

SUNDRIES

Eastman's Photo Paste, per 3 ounce tube,	\$.15
Eastman's Photo Paste, per 5 ounce tube,25
Velvet Rubber Squeegees, 6 inches, each,40
Velvet Rubber Squeegees, 8 inches, each,50
Kodak Push Pins, for pinning up film negatives, per box of 1 doz.,25
3½ x 3½ Glass for Printing Frames, each,05
3¼ x 4¼ Glass for Printing Frames, each,05
4 x 5 Glass for Printing Frames, each,05
5 x 7 Glass for Printing Frames, each,05
2¼ x 7 Glass for No. 1 Panoram-Kodak Printing Frames, each,05
4 x 13 Glass for No. 4 Panoram-Kodak Printing Frames, each,10
4 x 13 Felt Mats for No. 4 Panoram-Kodak Printing Frames, each,15
Eastman's Orange Candle Lamp,25
Silk Bolting Cloth, 18 x 20 squares, fine,	1.25
Silk Bolting Cloth, 18 x 20 squares, medium,	1.13
Silk Bolting Cloth, 18 x 20 squares, coarse,	1.00
Solio Thermometers, each,40
Kodak Print Rollers, with two six inch rubber rollers in nicked steel frame,75

ENLARGEMENTS

EVERY amateur has among his negatives some that are well worth enlarging and framing. Our enlarging department contains only skilled operators and we secure the very best results possible from every negative. Where the kind of paper is not specified we will make the enlargements upon the paper which, in our judgment, is best suited to the negative and the subject.

PRICE LIST.

Royal Bromide, Standard Bromide, Platino-Bromide, Enameled Bromide or Matte-Enamel Bromide Enlargements from any size negatives, mounted on cardboard.

No extra charge for Sepia Tones on Royal or Enameled Bromide Enlargements.

	Each.	Per Doz.
4¼ x 6½,	\$.35	\$3.00
6½ x 8½,50	5.00
8 x 10,75	—
10 x 12,	1.00	—
11 x 14,	1.25	—
14 x 17,	1.50	—
Larger sizes in proportion.		
Lantern Slides,50	5.00

CONDENSED KODAK LIST

FOLDING POCKET KODAKS Nos. 0, 1 AND 1A.

	No. 0 1½ x 2½	No. 1 2¼ x 3¼	No. 1A 2½ x 4¼
FOLDING POCKET KODAK, capacity 12 exposures, not loaded,	\$ 6.00	\$10.00	\$12.00
Transparent Film Cartridge, 12 exposures,25	.40	.50
Do., 6 exposures,15	.20	.25
Carrying Case with shoulder strap,	1.00	1.25	1.25
Clamp for carrying case on Bicycle Head,	—	.50	.50
‡Kodak Portrait Attachment,	—	.50	.50
*Developing, printing and mounting, 12 exposures,65	1.00	1.25
*Developing only, each,03	.04	.06
*Printing and mounting only, each,03½	.05	.07

FOLDING POCKET KODAKS No. 2 AND No. 3.

	No. 2 3½ x 3½	No. 3 3¼ x 4¼
+FOLDING POCKET KODAK, capacity 12 exposures, not loaded,	\$15.00	\$17.50
Do., DE LUXE (see page 23),	—	75.00
Transparent Film Cartridge, 12 exposures,60	.70
Do., 6 exposures,30	.35
Do., "Double-Two" Cartridge (4 exposures),20	.25
Carrying Case with shoulder strap,	1.25	1.25
Clamp for carrying case on Bicycle Head,50	—
Pair of Clamps for carrying case on Bicycle Head,	—	1.00
‡Kodak Portrait Attachment,50	.50
*Developing, printing and mounting, 12 exposures,	1.50	1.50
*Developing only, each,06	.06
*Printing and mounting only, each,08	.08
Glass Plate Adapter, with ground glass,	—	3.50
Single Plate Holders for same,	—	.50

BULLET, BULLS-EYE AND FLENO KODAKS.

	No. 2 3½ x 3½	No. 4 4 x 5
BULLET Kodak (not loaded),	\$10.00	—
BULLS-EYE Kodak (not loaded),	8.00	\$12.00
FLENO Kodak (not loaded),	5.00	—
Transparent Film Cartridge, 12 exposures,60	.90
Do., 6 exposures,30	.45
Do., "Double-Two" Cartridge (4 exposures),20	.30
*Developing, printing and mounting, 12 exposures,	1.50	1.80
*Developing only, each,06	.08
*Printing and mounting only, each,08	.10
‡Black Sole Leather Carrying Case,	1.25	2.00
‡Bicycle Carrying Case to clamp on head of machine, for No. 2 Bulls-Eye, Style A,	2.00	—
‡Sole Leather Bicycle Carrying Case, for No. 2 Bulls-Eye, Style B,	1.50	—
Double Glass Plate Holders for Bullet, (3¼ x 3½ inches for No. 2)	1.00	—
Leather Carrying Case for 3 Double Plate Holders (for Bullet)75	—
‡Kodak Portrait Attachment,50	—

*On orders for less than one dozen, 25 cents extra will be charged. Prints are always furnished mounted unless otherwise specified.

†For special lens and shutter equipment for No. 3 see page 23.

‡When ordering give exact designation of instrument to be used with.

CONDENSED KODAK LIST—Continued

BULLET SPECIAL AND BULLS-EYE SPECIAL KODAKS.

	No. 2 Special 4 x 5 3 1/2 x 3 1/2	No. 4 Special 4 x 5
BULLET SPECIAL Kodak (not loaded),	\$18.00	\$22.50
BULLS-EYE SPECIAL Kodak (not loaded),	15.00	20.00
Transparent Film Cartridge, 12 exposures,60	.90
Do., 6 exposures,30	.45
Do., "Double-Two" Cartridge (4 exposures),20	.30
*Developing, printing and mounting 12 ex.,	1.50	1.80
*Developing only, each,06	.08
*Printing and mounting only, each,08	.10
†Black Sole Leather Carrying Case for Bulls-Eye Special,	1.25	2.00
†Black Sole Leather Carrying Case for Bullet Special,	1.25	2.25
†Bicycle Carrying Case to clamp on head of machine, Style A,	2.00	—
†Sole Leather Bicycle Carrying Case, to attach under saddle, Style B,	1.50	—
†Double Glass Plate Holders for Bullet Special (3 1/4 x 3 1/2 inches, for No. 2),	1.00	1.00
Leather Carrying Case for 3 Double Plate Holders for Bullet Special,75	1.00
Do., for 6 Double Plate Holders,	1.00	1.50
†Kodak Portrait Attachment,50	—

CARTRIDGE KODAKS.

	No. 3 3 1/4 x 4 1/4	No. 4 4 x 5	No. 5 5 x 7
CARTRIDGE KODAK with rapid rectilinear lens and Triple Action Pneumatic Shutter (not loaded),	\$20.00	\$25.00	\$35.00
For Special Lens and Shutter Equipment see page 45.			
Wide Angle Lens for Cartridge Kodak,	5.00	5.00	7.50
Transparent Film Cartridge, 12 exposures,70	.90	1.60
Do., 6 exposures,35	.45	.80
Do., "Double-Two" Cartridge (4 exposures),25	.30	.55
Black Sole Leather Carrying Case with shoulder strap,	1.50	2.00	2.50
Do., to hold camera with plate adapter attached,	1.75	2.50	3.00
*Developing, printing and mounting (12 exposures),	1.50	1.80	2.40
*Developing only, each,06	.08	.10
*Printing and mounting only, each,08	.10	12 1/2
Bicycle Carrying Case,	2.25	2.50	3.25
Glass Plate Adapter, with ground glass,	2.00	2.50	3.00
Double Glass Plate Holders, each,	1.00	1.00	1.25
Black Sole Leather Carrying Case to hold three double plate holders and focusing glass,	1.00	1.00	1.50
Do., to hold six double plate holders and focusing glass,	1.50	1.50	2.00
Black Sole Leather Carrying Case to hold glass plate adapter, ground glass and six double plate holders,	—	2.50	3.00
Black Sole Leather Carrying Case to hold Cartridge Kodak and adapter, four double plate holders, focusing glass and three Film Cartridges,	2.75	3.50	4.50
Lens Cap,25	.25	.25

*On orders for less than one dozen, 25 cents extra will be charged. Prints are always furnished mounted unless otherwise specified.

†In ordering state whether for Bullet Special or Bulls-Eye Special. In ordering for No. 4 Bullet Special, specify "Model C."

PANORAM-KODAKS.

	No. 1 2 1/2 x 7	No. 4 3 1/2 x 12
PANORAM-KODAK (not loaded),	\$10.00	\$20.00
†Transparent Film Cartridge (No. 1, 6 exposures; No. 4, 5 ex.),40	.90
†Do., No. 1, 3 exposures; No. 4, 2 exposures,20	.45
Black Sole Leather Carrying Case with shoulder strap,	1.75	2.00
*Developing, printing and mounting, 6 exposures No. 1, or 5 exposures No. 4,	1.00	1.75
*Developing only, each,08	.18
*Printing and mounting only, each,10	.20

*On orders for less than 6 pictures No. 1 or 5 pictures No. 4, 25 cents extra will be charged. Prints are always furnished mounted when not otherwise specified in order.

†No. 1 uses No. 1 Folding Pocket Kodak Film, No. 4 uses No. 4 Bulls-Eye Film.

CONDENSED KODAK LIST—Continued

No. 2 STEREO KODAK.

No. 2 Stereo Kodak for standard size (3 1/4 x 6), Stereo pictures (not loaded)	\$15.00
Transparent Film Cartridge, 6 Stereo or 12 3 1/2 x 3 1/2 exposures,60
Do. 3 Stereo or 6, 3 1/2 x 3 1/2 exposures,30
Do. 2 Stereo or 4 (Double-Two) 3 1/2 x 3 1/2 exposures,30
Black Sole Leather Carrying Case with shoulder strap,	2.00
*Developing, Printing and Mounting, per pair,25
*Developing only, per pair,12
*Printing and Mounting only, per pair,16

*On orders for developing and printing less than one-half dozen, 25 cents extra will be charged. Prints are always furnished mounted unless otherwise ordered.

BROWNIE CAMERAS.

	No. 1 2 1/4 x 2 1/4	No. 2 2 1/4 x 3 1/4
Brownie Camera, (not loaded)	\$1.00	\$2.00
Transparent Film Cartridge, 6 exposures,15	.20
Imitation Leather Carrying Case,50	.75
*Developing, Printing and Mounting, per roll, six exposures,40	.50
*Developing only, each,03	.04
*Printing and Mounting only, each,04	.05

*On orders for developing or printing less than one-half dozen, 25 cents extra will be charged.

SPECIMEN PRINTS.

A specimen photograph made with any Kodak (not larger than 4 x 5) will be sent to any address in the United States upon receipt of 4 cents in postage stamps. No. 5 Cartridge Kodak specimens, 8 cents. Stereo Specimens, 8 cents. No. 4 Panoram-Kodak specimens, 20 cents.

DEVELOPING AND PRINTING

AS manufacturers of the Kodaks and film and finally of the paper upon which the prints are made, it is to our especial interest to give our customers the best possible results from every negative. To this end we employ only the most skillful operators in our developing and printing departments, thus ensuring the highest quality of work to those Kodakers who send to us to "*do the rest.*"

TOURISTS.

Travelers can always obtain fresh supplies of film on short notice at any one of the following addresses :

LONDON—Kodak, Limited, 43 Clerkenwell Road, E. C., 60 Cheapside, E. C., 115 Oxford St., W., 171-173 Regent St., W., 59 Brompton Road, S. W., 40 West Strand, W. C.

LIVERPOOL—Kodak, Limited, 96 Bold St.

GLASGOW—Kodak, Limited, 72 and 74 Buchanan St.

PARIS—Eastman Kodak Société Anonyme Française, Avenue de l'Opéra, 5, Place Vendôme, 4.

LYONS—Eastman Kodak Société Anonyme Française, 26 and 28 Rue de la République.

BERLIN—Kodak Gesellschaft, m. b. H., Friedrich Strasse, 16 ; Friedrich Strasse, 191.

BRUSSELS—Kodak, 36 Rue du Fossé aux Loups.

VIENNA—Kodak, Graben 29.

ST. PETERSBURG—Kodak, Bolschaja Konjuschemnaja 1.

MOSCOW—Kodak, Petrovka, Dom Michalkoff.

MILAN—Kodak, 10 Via Vittore Pisani.

MELBOURNE—Kodak, Limited, 284 Collins St.

TERMS.

The prices in this catalogue are strictly net, except to regular dealers who carry our goods in stock.

For the convenience of our customers we recommend that they make their purchases from a dealer in photographic goods, as by so doing they can save both time and express charges.

EASTMAN KODAK CO.
Rochester, N. Y.