



PREMO  
CAMERAS



# Premo Cameras

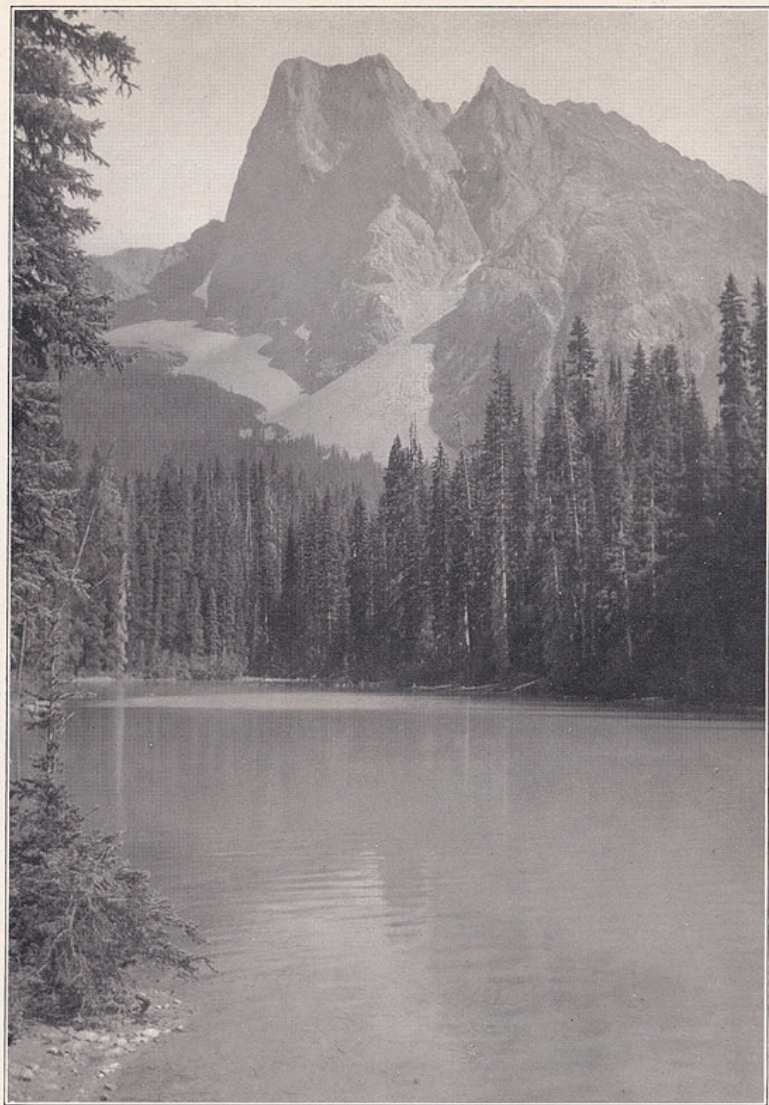
1922

Eastman Kodak Company

*Rochester Optical Department*

Rochester, N. Y.





FROM A PREMO NEGATIVE.

## Premo Cameras

THE Premo family comprises a comprehensive group of cameras. There are forty-six different models, covering the entire field of amateur photography. Many of the larger Premos are suitable also for professional and commercial work.

Beginners may choose safely from among several simple, inexpensive cameras. Some of them use film packs, some use cartridges. Other models aim at more ambitious tasks yet remain easy to operate so that they satisfy the novice and the advanced amateur alike.

Larger Premos fill the demand for cameras of still greater capabilities. These cameras use film and plates interchangeably, permit of focusing on the ground glass, and are altogether fitted for serious photographic work. For making excellent pictures of difficult subjects they are unsurpassed.

Premo cameras have a record of over thirty years of popularity, earned by good service and reliable performance. Whether the Premo you choose costs two dollars or a hundred you have the satisfaction of possessing the tested product of an established organization long known for its leadership in the manufacture of photographic goods.

EASTMAN KODAK COMPANY

*Rochester Optical Department*

ROCHESTER, N. Y.





## Premo Junior No. 1

ANY child of school age can use the Premo Junior successfully, so easily is it operated. Yet it is a surprisingly capable little camera—grownups are well pleased with the pictures it makes. They are  $2\frac{1}{4} \times 3\frac{1}{4}$  inches in size.

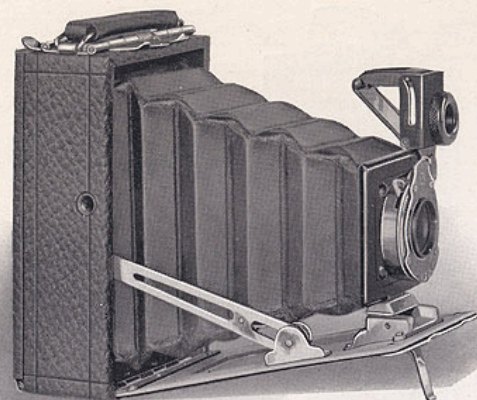
Lens and shutter are always ready—no adjustment is necessary. Open the back, drop in a film pack, and the Premo Junior is loaded for twelve exposures.

*DETAILS*—Dimensions,  $3\frac{1}{8} \times 4\frac{1}{2} \times 5\frac{3}{4}$  in.; Weight, 11 ozs.; Rotary Automatic shutter with diaphragm; Meniscus lens; two finders; two tripod sockets.

### PRICES

	$2\frac{1}{4} \times 3\frac{1}{4}$
Premo Junior No. 1 . . . . .	\$2.50
Carrying Case . . . . .	1.35
Kodak Film Pack, No. 520 . . . . .	.50
Kodak Portrait Attachment No. 0. . . . .	.75

*The Prices of Camera and Film Include the Excise Tax.*



## Premoette Junior

A NICELY finished folding camera, of pocket size, that uses film packs and makes  $2\frac{1}{4} \times 3\frac{1}{4}$  pictures. It is almost as simple to use as a fixed focus camera. After it is opened the lens standard is set into the proper slot near the end of the bed and no focusing is required.

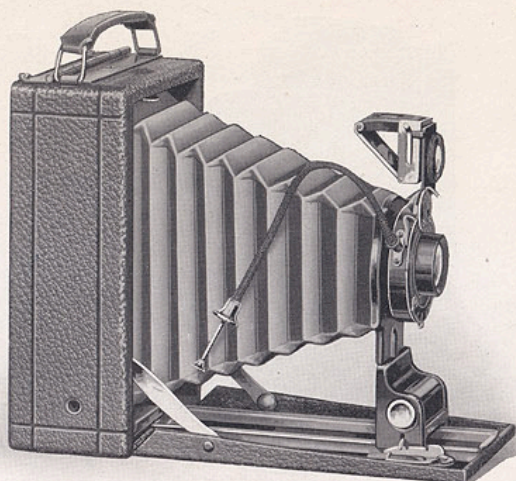
*DETAILS*—Dimensions,  $1\frac{1}{2} \times 3 \times 4\frac{3}{4}$  in.; Weight, 12 ozs.; Aluminum body; Brilliant, collapsible reversible finder; Two tripod sockets; Kodak Ball Bearing shutter. No. 0 shutter has speeds of  $1/25$  and  $1/50$  of a second, time and bulb; No. 1 shutter has cable release and an additional speed of  $1/100$  of a second.

### PRICES

	$2\frac{1}{4} \times 3\frac{1}{4}$
Premoette Junior, with Kodak Ball Bearing Shutter No. 0 and Meniscus Achromatic Lens . . . . .	\$8.00
With Rapid Rectilinear Lens . . . . .	10.00
With Kodak Anastigmat Lens f. 7.7, No. 1 shutter . . . . .	15.00
Sole leather carrying case . . . . .	2.15
Kodak Film Pack No. 520 . . . . .	.50
Kodak Portrait Attachment (p. 45) . . . . .	.75

*The Prices of Camera and Film Include the Excise Tax.*





## Premoette Senior

THE Premoette Senior is superbly suited to the needs of any amateur who desires a simple, reliable pocket camera. The ease with which it makes good pictures fits it well for beginners' use, but experienced amateurs find it an entirely satisfactory instrument. As auxiliary equipment, for anyone who has a larger camera, it is ideal.

There is a variety of Premoette Seniors, from which anyone may select his favorite size, fitted with the desired lens, at a moderate price. It is made in three sizes— $2\frac{1}{2} \times 4\frac{1}{4}$ ,  $3\frac{1}{4} \times 4\frac{1}{4}$ ,  $3\frac{1}{4} \times 5\frac{1}{2}$ . Each model is offered in two standard lens equipments.

The Rapid Rectilinear lens is thoroughly reliable and makes first-rate negatives under average conditions. The Kodak Anastigmat *f. 7.7*, however, is slightly faster and is so highly corrected that for depth and definition it has no superior at any price. It makes crisp, sharp negatives of distinctive quality—a factor that is of special importance when enlargements are to be made.

Kodak Ball Bearing shutter is a standard mechanism in every respect. It is smooth-acting and can be worked either by finger or cable release. Speeds of  $1/25$ ,  $1/50$  and  $1/100$  of a second, as well as time and bulb, are provided. The lens standard snaps quickly into place at any of the indicated distances.



*Kodak Ball Bearing shutter and Kodak Anastigmat *f. 7.7* are an excellent combination.*

The Premoette Senior is covered with black grain leather and the metal parts are finished in nickel and black. Loads in daylight with film packs of twelve exposures. One or more films may be removed in a darkroom for development without waiting for the entire dozen to be exposed.

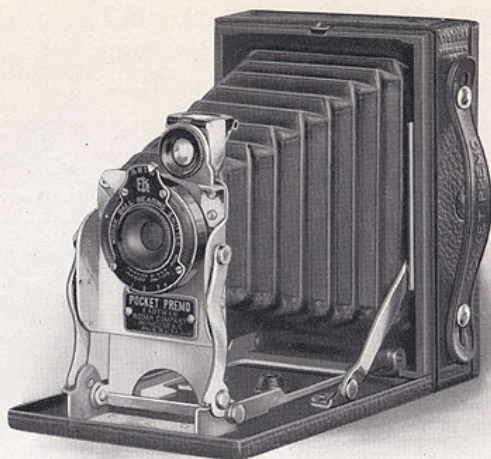
**DETAILS**—Body is made of seasoned wood. Bed and back are of aluminum. Dimensions:  $2\frac{1}{2} \times 4\frac{1}{4}$ ,  $1\frac{7}{8} \times 3\frac{5}{8} \times 5\frac{5}{8}$  in.;  $3\frac{1}{4} \times 4\frac{1}{4}$ ,  $1\frac{15}{16} \times 4\frac{1}{16} \times 5\frac{5}{8}$  in.;  $3\frac{1}{4} \times 5\frac{1}{2}$ ,  $2\frac{1}{4} \times 4\frac{1}{2} \times 7\frac{1}{8}$  in. Weight:  $2\frac{1}{2} \times 4\frac{1}{4}$ , 21 ozs.;  $3\frac{1}{4} \times 4\frac{1}{4}$ , 22 ozs.;  $3\frac{1}{4} \times 5\frac{1}{2}$ , 35 ozs.; Two tripod sockets; Reversible, brilliant, collapsible finder; Automatic standard clamp; Automatic focusing lock.

### PRICES

	$2\frac{1}{2} \times 4\frac{1}{4}$	$3\frac{1}{4} \times 4\frac{1}{4}$	$3\frac{1}{4} \times 5\frac{1}{2}$
Premoette Sr. with Rapid Rectilinear Lens and Kodak Ball Bearing Shutter . . .	\$13.00	\$13.00	\$17.00
With Kodak Anastigmat Lens <i>f. 7.7</i> . . .	18.00	18.00	22.00
Sole Leather Carrying Case. . . . .	3.15	3.50	4.25
Kodak Film Pack (No. 516 for $2\frac{1}{2} \times 4\frac{1}{4}$ , No. 518 for $3\frac{1}{4} \times 4\frac{1}{4}$ No. 522 for $3\frac{1}{4} \times 5\frac{1}{2}$ ) . . .	.60	.90	1.10
Kodak Portrait Attachment (p. 45) . . .	.75	.75	.75

*The Prices of Cameras and Film Include the Excise Tax.*





## Pocket Premo

**T**HE Pocket Premo is easy to load, easy to carry and easy to use. It is an excellent fixed-focus camera for beginners, but with all its simplicity it is so reliable a photographic instrument that it thoroughly satisfies advanced amateurs who choose it as their pocket camera.

It is a quick-action camera, instantly opened or closed. One motion draws down the bed and snaps the lens standard forward, into rigid position, ready for the picture. This self-erecting feature enables one to catch the unexpected scene before it changes.

Space is so economized in the Pocket Premo that it is only  $1\frac{1}{4}$  inches thick,  $3\frac{1}{4}$  inches wide, and a little over 4 inches long, and yet it makes pictures  $2\frac{1}{4} \times 3\frac{1}{4}$  inches. The negatives that it produces lend themselves readily to enlargements.

The lens is the Meniscus Achromatic, carefully adjusted at universal focus. The Kodak Ball Bearing shutter has instantaneous speeds of  $1/25$  and  $1/50$  of a second, and provides for the usual time and bulb exposures.

Grain leather is used for the cover, and metal parts are heavily nickeled, making the Pocket Premo an attractive camera, as well as dependable and practical.

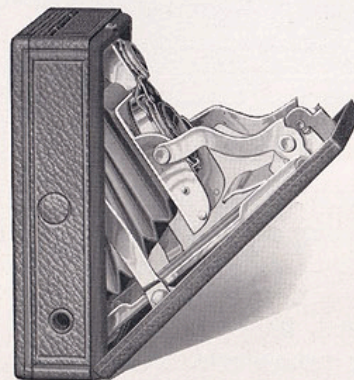
Loads in daylight with film packs.

*DETAILS*—Capacity: 12 exposures without reloading. Weight: 18 ozs. Shutter: Kodak Ball Bearing. Lens: Meniscus Achromatic. Collapsible Finder. Two Tripod Sockets.

### PRICES

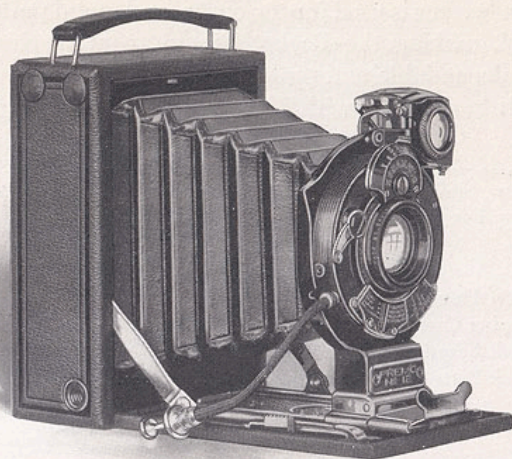
	$2\frac{1}{4} \times 3\frac{1}{4}$
Pocket Premo . . . . .	\$11.00
Carrying Case to hold camera and film pack . . . . .	1.60
Kodak Film Pack No. 520. . . . .	.50
Kodak Portrait Attachment, No. 8 . . . . .	.75

*The Prices of Camera and Film Include the Excise Tax.*



*One motion draws down the bed and snaps the front into position.*





## Premo No. 12

**P**REMO No. 12 is the ideal instrument for the amateur who wants a pocket camera with which he can use film and plates interchangeably and focus on ground glass or with scale and finder, as he chooses. Its pictures are  $2\frac{1}{4} \times 3\frac{1}{4}$  inches in size.

A leather-covered, hinged focusing panel, a special metal film pack adapter and a single metal plate holder are included in the regular equipment. A special Roll Holder is also supplied to take Eastman Graflex Roll Film. All are instantly interchangeable. By inserting a Kodak Cut Film Sheath in the plate holder, Kodak Cut Film (see page 28) may be used. The film pack adapter, the plate holder and the roll holder have dark slides, so that they may be detached from the camera at any time without waiting until their contents are all exposed.

Rapid Rectilinear lens, which is regular equipment, is entirely satisfactory for average use, but the Kodak Anastigmat f. 7.7 also listed makes superior negatives. Many enthusiastic camer-

ists prefer the anastigmat lenses, in order to insure the best possible negatives from which to have enlargements made.

Kodak Ball Bearing shutter has speeds of  $1/25$ ,  $1/50$  and  $1/100$  of a second. The Kodamatic shutter, which is also listed, has speeds ranging from  $1/2$  second to  $1/200$  of a second. Equipped with this shutter and the Kodak Anastigmat lens f. 6.3 the capabilities of this camera are increased to cope with the more difficult tasks that occur regularly to the enthusiastic amateur.

Premo No. 12 is covered with a fine quality of grain leather, handsomely embossed, and all metal parts are finished in nickel and black enamel.



*The Kodamatic Shutter has speeds of  $1/2$  second to  $1/200$  of a second.*

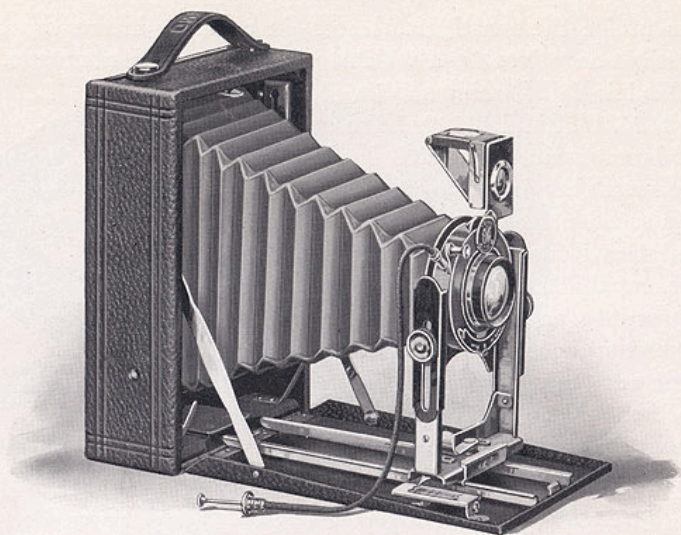
**DETAILS**—Capacity: 12 films or one plate. Box: Aluminum. Bed: Aluminum, with special lever focusing device. Brilliant, reversible finder. Two Tripod Sockets. Dimensions:  $1\frac{1}{8} \times 3\frac{1}{4} \times 4\frac{5}{8}$  in. Weight: 24 ozs.

### PRICES

	$2\frac{1}{4} \times 3\frac{1}{4}$
Premo No. 12 with Kodak Ball Bearing Shutter and R. R. Lens, including Film Pack Adapter and Plate Holder . . .	\$20.00
With Kodak Anastigmat Lens f. 7.7 and B. B. Shutter . . .	25.00
With Kodamatic Shutter and Kodak Anastigmat Lens f. 6.3, $4\frac{5}{8}$ -inch focus . . .	53.00
With Optimo or Ilex Shutter and B. & L. Kodak Anastigmat Lens, f. 6.3, $4\frac{5}{8}$ -inch focus . . .	53.00
With Optimo or Ilex Shutter and B. & L. Tessar, Ser. IIb, Lens f. 6.3, $4\frac{5}{8}$ -inch focus . . .	68.00
With Optimo or Ilex Shutter and B. & L. Tessar, Ser. Ic, Lens f. 4.5, $3\frac{1}{2}$ -inch focus . . .	65.00
Carrying Case, velvet lined . . .	4.50
Single Plate Holder, each . . .	.75
Kodak Cut Film Sheath, each . . .	.10
Kodak Film Pack No. 520 . . .	.50
Kodak Cut Film, doz. . .	.46
Special Roll Holder, interchangeable with Plate Holder . . .	11.50
Eastman Graflex Roll Film No. 50, 6 exposures . . .	.25
Kodak Portrait Attachment, (p. 45) . . .	.75

*The Prices of Camera and Film Include the Excise Tax.*





## Premo No. 8

**T**HIS camera has certain refinements with which the amateur can widen the scope of his picture-making activities. It is well suited for serious photographic tasks although there is nothing difficult about its use.

To insure precise focus and artistic composition many amateurs prefer to focus on a ground glass. The ground glass focusing panel supplied with this camera has a leather covered hinged back and is instantly removed. Scale and finder may also be used for focusing. The rising and falling front is useful for correcting the amount of foreground, sky or background.

One plate holder is included in regular equipment. By inserting Kodak Cut Film Sheaths in the plate holder, Kodak Cut Film, which offers many advantages over plates, can be used. When equipped with the Film Pack Adapter this camera can be loaded in daylight with twelve-exposure film packs.

Premo No. 8 is made in the three sizes—4 x 5, 3¼ x 5½, 5 x 7. Each model is regularly fitted with Planatograph lens, of

standard quality. The 3¼ x 5½ size is fitted with the Kodak Anastigmat lens *f*. 7.7 at slight additional cost. The shutter is the Kodak Ball Bearing, with instantaneous speeds of 1/25, 1/50 and 1/100 of a second, in addition to time and bulb actions.

The body is of aluminum and well seasoned wood, covered with genuine leather, giving a neat and attractive appearance. In its compact carrying case the Premo No. 8 is a handsome outfit.

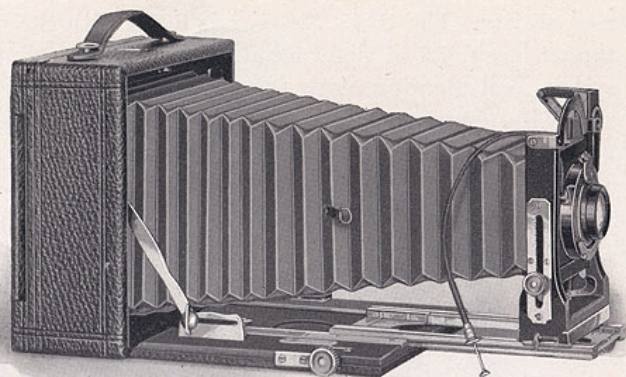
*DETAILS*—Capacity: 12 films or 2 plates. Body: seasoned wood, covered with leather. Rising and falling front. Brilliant, reversible, collapsible finder. Two Tripod Sockets. Dimensions: 3¼ x 5½, 2 x 5 x 7¼ in.; 4 x 5, 2 x 5¼ x 6½ in.; 5 x 7, 2¼ x 6½ x 8½ in. Weight: 3¼ x 5½, 34 ozs.; 4 x 5, 30 ozs.; 5 x 7, 42 ozs. Carrying Case: imitation leather, with compartments for holders.

### PRICES

	4 x 5	3A 3¼ x 5½	5 x 7
Premo No. 8 with Planatograph Lens, Kodak Ball Bearing Shutter, Carrying Case and Plate Holder . . . . .	\$20.00	\$20.00	\$30.00
With Kodak Anastigmat Lens, <i>f</i> . 7.7 . . . . .		25.00	
Film Pack Adapter . . . . .	1.75	1.75	2.50
Kodak Cut Film Sheath, each . . . . .	.15	.15	
No. 2 Eastman Film Sheath, each . . . . .			.20
Kodak Film Pack No. 523 for 4 x 5, No. 522 for 3¼ x 5½, No. 515 for 5 x 7 . . . . .	1.10	1.10	1.90
Kodak Cut Film, doz. . . . .	.93	.93	1.50
Kodak Portrait Attachment, (p. 45) . . . . .	.75	.75	.75

*The Prices of Cameras and Film Include the Excise Tax.*





## Premo No. 9

**L**ONG bellows capacity, a swing bed, a reversible back, a rising and falling front, scale and finder as well as focusing panel—all these advantages make the Premo No. 9 an unusually versatile camera.

The Planatograph lens, with which this camera is regularly fitted, is convertible. Using the complete lens, with the bellows extended to full capacity, copying can be done to almost full size. The focal length of either element alone is double that of the complete lens, so that the image made is twice as large. This feature is valuable for distant landscape work.

When it is necessary to point the camera upward in photographing architectural subjects, vertical lines can be kept parallel in the image by adjusting the swing bed so that the focal plane is perpendicular. Further correction is permitted by the rising and falling front.

A reversible back provides for making either vertical or horizontal exposures without turning the camera on its side.

One plate holder is included in the equipment. By inserting Kodak Cut Film Sheaths it will take Kodak Cut Film. Film packs can be used in a Film Pack Adapter.

Planatograph lens and Kodak Ball Bearing shutter (speeds 1/25, 1/50 and 1/100 of a second) are regularly supplied. The 3¼ x 5½ and 4 x 5 models are also listed with Kodak Anastigmat lens *f.* 7.7 and Kodak Ball Bearing shutter. Those who wish greater lens and shutter speed will find Kodak Anastigmat lens *f.* 6.3 and Optimo or Ilex shutter (speeds 1 second to 1/300 of a second) ideal equipment.

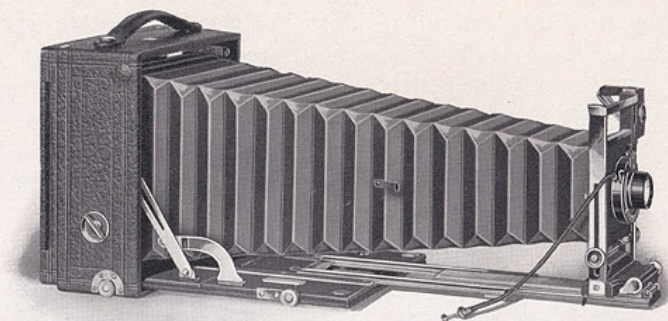
*DETAILS*—Capacity: 12 films or 2 plates. Body: seasoned wood, covered with grain leather. Bed: Wood, finished in polished black ebony; rack and pinion for fine focusing; adjustable for swing. Back: Spring catch, reversible. Front: Wood, with rising and falling front. Finder: Brilliant, reversible, collapsible. Bellows: Black leather; draw, 3¼ x 5½, 13 in.; 4 x 5, 13 in.; 5 x 7, 15¼ in. Dimensions: 3¼ x 5½, 3 x 7 x 7 in.; 4 x 5, 3 x 7 x 7 in.; 5 x 7, 2⅞ x 8¼ x 8¼ in. Weight: 3¼ x 5½, 63 ozs.; 4 x 5, 63 ozs.; 5 x 7, 76 ozs.

### PRICES

	4 x 5	3A 3¼ x 5½	5 x 7
Premo No. 9 with Planatograph Lens, Kodak Ball Bearing Shutter, Case and Holder	\$40.00	\$40.00	\$50.00
With Kodak Anastigmat Lens, <i>f.</i> 7.7	45.00	45.00	
With Kodak Anastigmat Lens, <i>f.</i> 6.3 and Ilex Shutter	65.00	65.00	
With B. & L. Kodak Anastigmat Lens <i>f.</i> 6.3 and Optimo or Ilex Shutter			105.00
Film Pack Adapter	1.75	1.75	2.50
Kodak Cut Film Sheath, each	.15	.15	
No. 2 Eastman Film Sheath, each			.20
Kodak Film Pack No. 523 for 4 x 5, No. 522 for 3¼ x 5½, No. 515 for 5 x 7	1.10	1.10	1.90
Kodak Cut Film, doz.	.93	.93	1.50
Kodak Portrait Attachment (p. 45)	.75	.75	.75

*The Prices of Cameras and Film Include the Excise Tax.*





## Premo No. 10

**E**VERY adjustment required for technical photography is provided for in the Premo No. 10. The long bellows draw will accommodate the single combinations of a convertible lens. Wide angle lenses may be used by attaching the supplementary bed furnished with the camera. The swing-bed and rising and falling front permit correct composition of architectural subjects. The back is reversible.

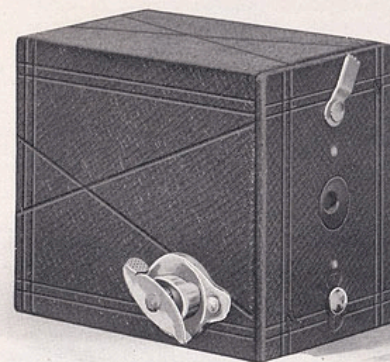
Cut film, plates and film packs can be used in the proper attachments, so that the most appropriate sensitized material may be selected for each subject.

*DETAILS*—Capacity: 12 films or 2 plates. Body: Hardwood, leather covered. Bed: Wood, polished ebony finish, adjustable for swing. Back: Spring catch, reversible. Front: Metal, with rising and falling rack and pinion and locking device. Lens Board: Removable, size  $3\frac{1}{2} \times 3\frac{1}{2}$  in. Brilliant, reversible finder. Two Tripod Sockets. Carrying Case: Sole leather, plush lined, with compartments for holders. Bellows: Black leather; draw, 19 in. Dimensions:  $4 \times 8\frac{1}{2} \times 8\frac{1}{2}$ . Weight:  $5\frac{1}{2}$  lbs.

### PRICES

	5 x 7
Premo No. 10 with Planatograph Lens and Kodak Ball Bearing Shutter, Carrying Case and Plate Holder	\$85.00
With Bausch & Lomb Kodak Anastigmat Lens, f. 6.3, No. 5 and Optimo or Ilex Shutter	145.00
With B. & L. Protar VIIa Lens f. 7, No. 8 and Optimo or Ilex Shutter	190.00
Film Pack Adapter	2.50
No. 2 Eastman Film Sheath	.20
Kodak Film Pack No. 515.	1.90
Kodak Cut Film, doz.	1.50

*The Prices of Camera and Film Include the Excise Tax.*



## Cartridge Premo No. 00

**B**OYS and girls everywhere find picture-making interesting and instructive, and here is a little camera that especially appeals to them. Any child of school age can use it and it makes surprisingly good pictures.

Adjustment for speed or distance is unnecessary. Simply turn the film into place, point the camera at the subject and press the lever that releases the shutter.

The lens is a meniscus and the shutter may be set for time exposures as well as snapshots. It loads in daylight with special 6-exposure roll film.

*DETAILS*—Size of camera:  $2 \times 2\frac{5}{8} \times 3\frac{1}{8}$  inches. Size of picture:  $1\frac{3}{4} \times 1\frac{1}{4}$  inches.

### PRICES

Cartridge Premo No. 00	\$1.25
Eastman Film Cartridge, No. 35	.15

*The Prices of Camera and Film Include the Excise Tax.*





## Nos. 2 and 2A Cartridge Premos

A SIMPLE, dependable box camera, made in two popular sizes:  $2\frac{1}{4} \times 3\frac{1}{4}$  and  $2\frac{1}{2} \times 4\frac{1}{4}$ . It loads in daylight with roll film, which can be developed quickly in a Kodak Film Tank.

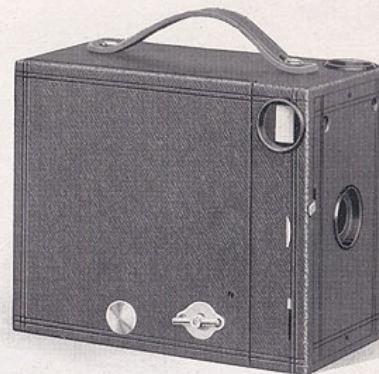
Lens and shutter are always ready for immediate use, without adjustment, making this camera exceedingly easy to operate.

*DETAILS*—Size of pictures: No. 2,  $2\frac{1}{4} \times 3\frac{1}{4}$  in.; No. 2A,  $2\frac{1}{2} \times 4\frac{1}{4}$  in. Capacity: No. 2, 6 exposures without reloading; No. 2A, 12 exposures without reloading. Size of camera: No. 2,  $5\frac{3}{4} \times 4 \times 3\frac{1}{4}$  in.; No. 2A,  $3\frac{3}{8} \times 5\frac{1}{8} \times 6\frac{1}{4}$  in. Weight: No. 2, 16 ozs.; No. 2A, 21 ozs. Lens: No. 2, Meniscus; No. 2A, Meniscus Achromatic. Shutter: Eastman Rotary, with three stops. Two finders.

### PRICES

	No. 2	No. 2A
Cartridge Premo . . . . .	\$2.50	\$3.50
Carrying Case, with shoulder strap . . . . .	1.35	1.70
N. C. Film Cartridge, 12 exposures (No. 116) . . . . .		.60
6 exposures (No. 120 for No. 2; No. 116 for No. 2A) . . . . .	.25	.30
Kodak Portrait Attachment (p. 45) . . . . .	.75	.75

*The Prices of Cameras and Film Include the Excise Tax.*



## No. 2C Cartridge Premo

PICTURES made by this camera are of the increasingly popular 2C size,  $2\frac{7}{8} \times 4\frac{7}{8}$  inches—a little smaller than postcards. Their oblong area makes it possible for either a vertical or horizontal subject to fill the picture without waste space.

Shutter and lens are thoroughly reliable and always ready, requiring no adjustment for distance or speed. Loads with roll film of six or ten exposures. A practical camera in every respect.

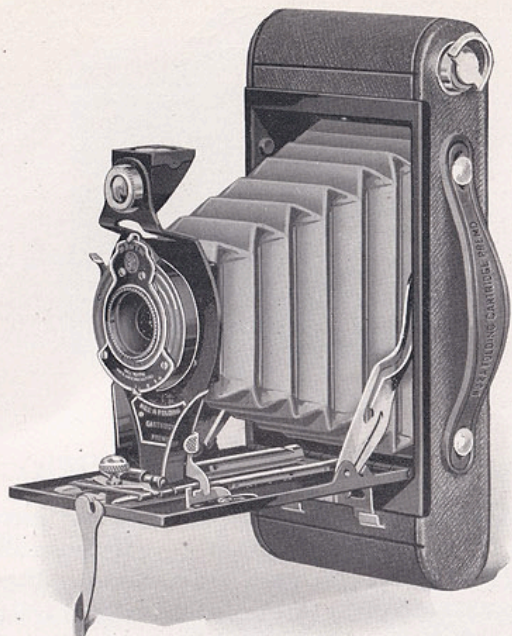
*DETAILS*—Capacity: 10 exposures without reloading. Size of camera:  $3\frac{7}{8} \times 6 \times 7\frac{1}{4}$  in. Weight: 25 ozs. Lens: Meniscus Achromatic,  $5\frac{1}{2}$ -inch focus. Shutter: Eastman Rotary, with three stops. Two finders. Two tripod sockets.

### PRICES

	$2\frac{7}{8} \times 4\frac{7}{8}$
No. 2C Cartridge Premo, Meniscus Achromatic Lens, Eastman Rotary Shutter . . . . .	\$5.00
Carrying Case with shoulder strap . . . . .	1.80
N. C. Film Cartridge, 10 exposures (No. 130) . . . . .	.75
6 exposures (No. 130) . . . . .	.45
Kodak Portrait Attachment (p. 45) . . . . .	.75

*The Prices of Camera and Film Include the Excise Tax.*





## Nos. 2 and 2A Folding Cartridge Premos

ROLL film convenience in a folding pocket camera of the most practical simplicity is the idea behind the Folding Cartridge Premo. It is almost as easy to use as a box-type camera.

Either two or three distances (depending on the model) are indicated on the focusing scale. The lens standard may be set for universal focus also, so that both far and near objects may be photographed without further adjustment for focus.

No. 2 model makes pictures  $2\frac{1}{4} \times 3\frac{1}{4}$  inches in size, No. 2A makes pictures  $2\frac{1}{2} \times 4\frac{1}{4}$  inches.

The No. 0 Kodak Ball Bearing shutter on the No. 2 model has speeds of 1/25 and 1/50 of a second, as well as time and

bulb. The No. 2A model is supplied with the No. 1 Kodak Ball Bearing shutter, which has an additional speed of 1/100 of a second. Meniscus Achromatic lens is regular equipment on both models but Rapid Rectilinear lens also is listed. Both the No. 2 and No. 2A models of the Folding Cartridge Premo are made of lightweight steel, covered with a durable imitation leather.



No. 1 Kodak Ball Bearing shutter has speeds of 1/25, 1/50 and 1/100 of a second.

**DETAILS**—No. 2: Size of pictures,  $2\frac{1}{4} \times 3\frac{1}{4}$  in. Capacity: 6 exposures without reloading. Body: Steel. Size of camera:  $1\frac{1}{4} \times 3\frac{1}{8} \times 6\frac{1}{2}$  in. Weight: 19 ozs. Lens:  $3\frac{1}{2}$ -inch focus. Shutter: Kodak Ball Bearing. Reversible finder, two tripod sockets, automatic focusing lock, black bellows.

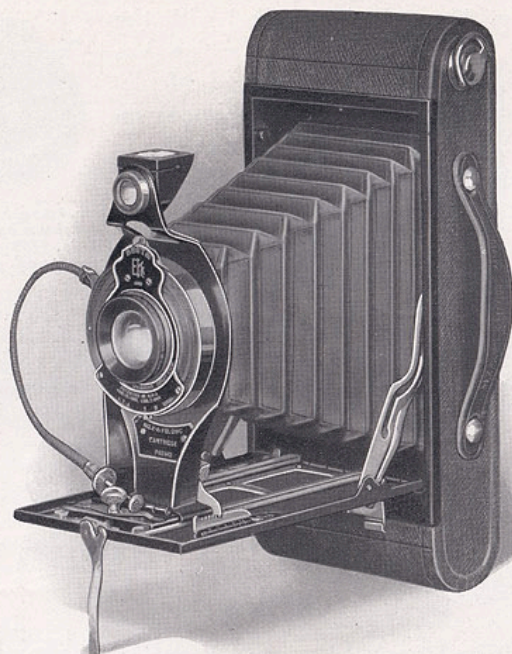
No. 2A: Size of pictures,  $2\frac{1}{2} \times 4\frac{1}{4}$  in. Capacity: 12 exposures without reloading. Body: Steel. Size of camera:  $1\frac{7}{16} \times 3\frac{3}{8} \times 7\frac{7}{8}$  in. Weight: 25 ozs. Lens:  $4\frac{1}{4}$ -inch focus. Shutter: Kodak Ball Bearing. Reversible finder, two tripod sockets, automatic focusing lock, black bellows.

### PRICES

	No. 2	No. 2A
Folding Cartridge Premo with Meniscus Achromatic Lens	\$ 8.00	\$ 9.00
With Rapid Rectilinear Lens	10.00	11.00
Cartridge Premo Carrying Case	1.70	1.80
N. C. Film Cartridge, 12 exposures (No. 116)		.60
6 exposures (No. 120 for No. 2, No. 116 for No. 2A)	.25	.30
Kodak Portrait Attachment (p. 45)	.75	.75

*The Prices of Cameras and Film Include the Excise Tax.*





## Nos. 2C and 3A Folding Cartridge Premos

THE sizes of the pictures made by these two models are popular among amateurs everywhere. The 3A, or postcard picture, is often called "standard" size. Its dimensions are  $3\frac{1}{4} \times 5\frac{1}{2}$  inches. The 2C picture is only slightly smaller and measures  $2\frac{7}{8} \times 4\frac{7}{8}$  inches. Thus both cameras make oblong negatives, so that vertical as well as horizontal subjects may fill the image area without waste.

The choice of lenses enables the amateur to obtain either the Meniscus Achromatic or the Rapid Rectilinear as regular equipment. The Kodak Ball Bearing shutter has speeds of  $1/25$ ,  $1/50$  and  $1/100$  of a second, and time and bulb exposures.

Loads in daylight with 6- or 10-exposure roll film which can be developed in daylight in a Kodak Film Tank.

The body of this camera is made of aluminum, unsurpassed for lightness and strength. The cover is of fine imitation leather, good looking and durable.

By using a Kodak Portrait Attachment either of these cameras is well suited for amateur portraiture, a field for which the oblong picture is especially appropriate.

*DETAILS*—No. 2C: Size of pictures,  $2\frac{7}{8} \times 4\frac{7}{8}$  in. Capacity: 10 exposures without reloading. Body: Aluminum. Size of camera:  $1\frac{3}{4} \times 3\frac{3}{16} \times 8\frac{5}{8}$  in. Weight: 28 ozs. Lens: 5-inch focus. Shutter: Kodak Ball Bearing.

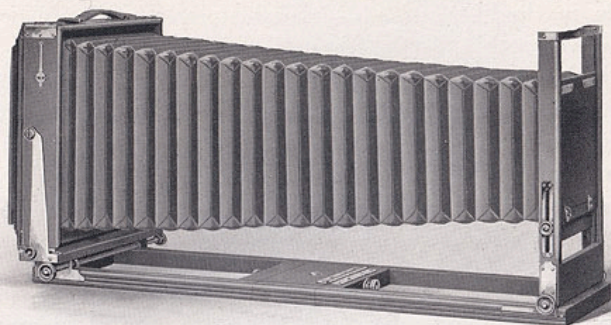
No. 3A: Size of pictures,  $3\frac{1}{4} \times 5\frac{1}{2}$  in. Capacity: 10 exposures without reloading. Body: Aluminum. Size of camera:  $1\frac{3}{4} \times 4\frac{5}{16} \times 9\frac{5}{16}$  in. Weight: 28 ozs. Lens:  $5\frac{3}{8}$ -inch focus. Shutter: Kodak Ball Bearing.

### PRICES

	No. 2C	No. 3A
Folding Cartridge Premo with Meniscus Achromatic Lens . . . . .	\$12.00	\$13.50
With Rapid Rectilinear Lens . . . . .	14.00	16.00
Cartridge Premo Carrying Case . . . . .	1.90	2.00
N. C. Film Cartridge, 10 exposures (No. 130 for 2C, No. 122 for 3A) . . . . .	.75	.90
6 exposures . . . . .	.45	.55
Kodak Portrait Attachment (p. 45) . . . . .	.75	.75

*The Prices of Cameras and Film Include the Excise Tax.*





## Eastman View No. 1

**D**ESIGNED to handle the great variety of tasks that fall to the commercial photographer, the Eastman View No. 1 is a camera of wide usefulness, built for practical service. Made in three sizes, 5 x 7, 6½ x 8½, and 8 x 10.

The double extension bed gives the advantage of long bellows draw for copying and other close-up work. When this extra bellows capacity is not needed, the extension remains in the case, out of the way.

Both front and back have rack and pinion so that focus may be adjusted from either end.

When using extreme wide angle lenses the front is racked back and the hinged forward bed folded upward. Focus is then adjusted by moving the back nearer to the lens. Thus, in wide angle work, no part of the camera projects beyond the lens and the weight of the instrument is directly over the tripod head.

The rising and falling front may be locked quickly in any position by pushing inward the milled head by which it is adjusted. The front is large enough to take high speed lenses of ample focal length for all view work.

Both horizontal and vertical swings are provided. The back is reversible, so that either vertical or horizontal subjects can be

photographed the long way of the film. By using the vertical cut-off board, two negatives may be made on one film.

Bellows sag is eliminated by an automatic support.

The camera is made of the best quality cherry, with light mahogany finish. Corners are dove-tailed, reinforced by metal. All metal parts are of polished brass.

The 5 x 7 size may be fitted with the Kodak Anastigmat lens f. 7.7, 8-inch focus, in the Kodamatic shutter.

The carrying case has four compartments, one each for camera, film holders, tripod, and another for focusing cloth, lenses and other accessories.

Regular equipment includes one plate holder or one film holder, whichever the purchaser chooses.

*DETAILS*—Bellows draw 5 x 7, 22½ in.; 6½ x 8½, 26 in.; 8 x 10, 29 in. Weight: 5 x 7, 6 lbs.; 6½ x 8½, 8 lbs.; 8 x 10, 9½ lbs. Size of Lens Board: 5 x 7, 4¼ x 4¼ in.; 6½ x 8½, 4¾ x 4¾ in.; 8 x 10, 5¾ x 5¾ in. Canvas Carrying Case.

### PRICES

	5 x 7	6½ x 8½	8 x 10
Eastman View Camera No. 1, with carrying Case and one Plate Holder or Film Holder	\$32.25	\$34.00	\$36.75
Kodak Anastigmat lens f. 7.7 in Kodamatic Shutter		40.00	
Extra Carrying Case	5.75	6.00	6.25
Extra Lens Board	.30	.40	.50
Eastman Portrait Film Holder No. 1	1.75	1.85	2.00
Eastman Plate Holders	1.75	1.85	2.00
No. 2 Eastman Film Sheath	.20	.25	.30

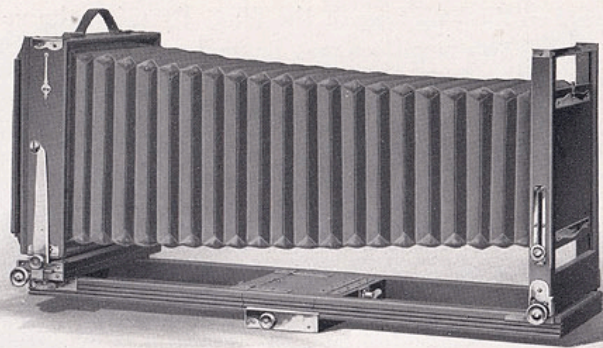
## Empire State Camera

For those who wish a view camera of larger size, we can furnish the 11 x 14 Empire State Model, which is similar to the Eastman View No. 1.

Empire State Camera, furnished in the 11 x 14 size only, including one Universal Plate Holder or Eastman Portrait Film Holder No. 2 and Carrying Case . . . . . \$67.50

*The Prices of Cameras and Lens Include the Excise Tax.*





## Eastman View No. 2

**T**HIS camera is constructed with the idea of incorporating maximum strength and utility in an instrument of the portable type.

The front is rigid, to insure freedom from vibration and to maintain the axis of the lens at right angles to the focal plane. The largest and heaviest lenses suitable for use with this camera are easily accommodated.

For vertical adjustment of the image the lens board is raised or lowered by a rack and pinion, which locks in any position. For focusing there is a rack and pinion at the back as well as at the front.

Horizontal and vertical swings are provided to correct distortion in the image.

When long bellows draw is required the extension bed is attached. For wide angle lens work the forward bed is folded upward as described on page 24.

The back is reversible and takes the Eastman Portrait Film Holder or Eastman Plate Holder. Four negatives may be made on each film by using the vertical and horizontal cut-off boards.

This camera is made in four sizes—5 x 7, 6½ x 8½, 8 x 10 and 7 x 11. The 7 x 11 size has proved especially valuable to many

successful workers because the oblong proportions of its picture permit of greater freedom in composition. This camera has an extraordinarily wide front board with a sliding arrangement so that the lens may be centered on either half of the 7 x 11 film when two 5 x 7 negatives are to be made. The swing of this model is of unusual latitude, to obtain full value of the entire film area, for architectural work. The practicability and economy of this 7 x 11 camera are apparent.

Eastman View No. 2 is made of hand polished mahogany, in a rich dark finish with the exception of the extensions, which are of cherry. All corners are reinforced with sand blasted brass angle pieces in a matte finish. The bellows of the Eastman View No. 2 is made of genuine leather. An automatic spring device, which prevents the bellows sagging at any point of extension, is provided with all sizes up to and including 8 x 10. The 7 x 11 is equipped with rings.

Eastman Portrait Film Holder is supplied except when the plate holder is specifically chosen by the purchaser.

The 5 x 7 size may be fitted with the Kodak Anastigmat lens *f*. 7.7, 8-inch focus, in the Kodamatic Shutter.

*DETAILS*—Bellows draw: 5 x 7, 23 in.; 6½ x 8½, 26½ in.; 8 x 10, 29½ in.; 7 x 11, 31 in. Weight: 5 x 7, 7 lbs.; 6½ x 8½, 10½ lbs.; 8 x 10, 11¼ lbs.; 7 x 11, 15½ lbs. Size of Lens Board: 5 x 7, 4½ x 4½ in.; 6½ x 8½, 6 x 6 in.; 8 x 10, 6 x 6 in.; 7 x 11, 6¼ x 13½ in.

### PRICES

	5 x 7	6½ x 8½	8 x 10	7 x 11
Eastman View Camera No. 2 with				
Carrying Case and Holder . . .	\$42.00	\$44.75	\$46.50	\$50.75
Kodak Anastigmat lens <i>f</i> . 7.7 in				
Kodamatic Shutter . . . . .	40.00			
Extra Carrying Case . . . . .	6.25	6.75	7.50	8.75
Extra Lens Board . . . . .	.60	.75	.75	1.25
Eastman Portrait Film Holder No. 1	1.75	1.85	2.00	2.00
Eastman Plate Holders . . . . .	1.75	1.85	2.00	2.00
No. 2 Eastman Film Sheath . . .	.20	.25	.30	

*The Prices of Cameras and Lens Include the Excise Tax.*



## Kodak Cut Film

**K**ODAK Cut Film offers every advantage of plates and, in addition, weighs but a fraction as much, is unbreakable, non-halation, easier to handle, and produces negatives of superior quality. It can be used in any cut film holder or, with film sheaths, in any plate holder.

Two kinds of Kodak Cut Film are supplied.

The regular Kodak Cut Film is equal in speed to the best portrait plate emulsions, and is standard in every respect.

Kodak Cut Film *Super Speed* has, as its name implies, an extra fast emulsion, yet its latitude, gradation and fineness of grain are equal to those of the regular speed. It can be depended on to give the best possible negatives under difficult light conditions or when an exposure must necessarily be short. This super speed feature proves its worth especially when making indoor portraits or snapshots in the shade. And all this added speed is attained without sacrificing any of those qualities on which film superiority is founded.

### THE PRICE

	2 1/4 x 3 1/4	3 1/4 x 4 1/4	3 1/4 x 5 1/2	4 x 5	5 x 7
Kodak Cut Film, doz.	\$0.46	\$0.67	\$0.93	\$0.93	\$1.50
Kodak Cut Film <i>Super Speed</i> , doz.	.52	.77	1.03	1.03	1.65

*The Prices of Kodak Cut Film Include the Excise Tax.*

## Eastman Professional Film

For use in Portrait Film Holders or in plate holders with the No. 2 Eastman Film Sheath.

	5 x 7	6 1/2 x 8 1/2	8 x 10	7 x 11
Portrait Film, <i>Super Speed</i>	\$1.65	\$2.53	\$3.66	\$3.66
Portrait Film, <i>Par Speed</i>	1.50	2.27	3.30	3.30
Commercial Film	1.50	2.27	3.30	3.30
Commercial Ortho Film	1.50	2.27	3.30	3.30
Process Film	1.50	2.27	3.30	3.30
Commercial Panchromatic Film	1.65	2.53	3.66	3.66

*The Prices of Eastman Professional Film Include the Excise Tax.*

## Film, Plates and Paper

### Kodak Film Packs

Quality and convenience, plus the greatest simplicity and rapidity in day-light loading and film changing, are the exceptional advantages of the Kodak Film Pack.

Each Pack contains 12 exposures of Eastman N. C. Film, which is non-curling, non-halation, and properly orthochromatic.

No.	Size, Inches	Size, Centimeters	Per Pack
No. 500	1 1/4 x 2 1/4	4 1/2 x 6	\$ .35
No. 520	2 1/4 x 3 1/4	6 x 9	.50
No. 516	2 1/2 x 4 1/4	6 1/2 x 11	.60
No. 518	3 1/4 x 4 1/4	8 x 10 1/2	.90
No. 542	3 x 5 1/2	7 1/2 x 13 1/2	1.00
No. 522	3 1/4 x 5 1/2	8 x 14	1.10
No. 523	4 x 5	10 x 12 1/2	1.10
No. 515	5 x 7	13 x 18	1.90
No. 541		9 x 12	1.00

*The Prices of Kodak Film Packs Include the Excise Tax.*

### Eastman N. C. Film Cartridges

No.	Size	6 exposure	10 exposure	12 exposure
No. 120	2 1/4 x 3 1/4	\$ .25		
No. 116	2 1/2 x 4 1/4	.30		\$ .60
No. 130	2 3/8 x 4 3/8	.45	\$ .75	
No. 122	3 1/4 x 5 1/2	.55	.90	

*The Prices of Film Cartridges Include the Excise Tax.*

### Dry Plates

Single Coated

Seed, Standard or Stanley

Size	Seed	Price per dozen	Standard	Stanley	Size	Seed	Price per dozen	Standard	Stanley
2 1/4 x 3 1/4		\$ .47	\$ .46	\$ .46	5 x 7	\$1.50	\$1.50	\$1.49	
3 1/4 x 4 1/4		.67	.67	.67	6 1/2 x 8 1/2	2.28	2.27	2.27	
3 1/4 x 5 1/2		.93	.93	.93	8 x 10	3.31	3.30	3.30	
4 x 5		.93	.93	.93					

*The Prices of Dry Plates Include the Excise Tax.*

### Velox Paper

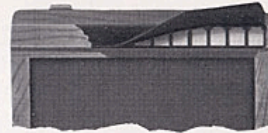
Size	Single Weight		Double Weight	
	Doz.	Gross	Doz.	Gross
2 1/4 x 3 1/4	\$ .12	\$1.10	\$ .15	\$1.40
2 1/4 x 3 1/2	.12	1.10	.15	1.40
2 1/4 x 4 1/4	.15	1.35	.20	1.70
2 1/2 x 4 1/4	.20	1.75	.25	2.20
2 3/4 x 4 1/4	.20	1.75	.25	2.20
3 1/8 x 5 1/2	.20	2.00	.25	2.50
4 x 5	.25	2.30	.30	2.90
5 x 7	.40	3.90	.50	4.90



## Plate Holders, Film Holders and Film Sheaths

### Premo Plate Holder

Premo holders are made light-tight by a spring-finger light-lock. This device is constructed of tempered, non-corrosive metal with spring fingers overlaid with a closely woven, specially prepared fabric. The dark slide can be inserted or withdrawn without admitting light to the plate. Fitted with lacquered press-board slides that will not electrify, collect dust, crack or split.



$2\frac{1}{4} \times 3\frac{1}{4}$ (Single) \$ .75	$3\frac{1}{4} \times 5\frac{1}{2}$ ..... \$1.50	$5 \times 7$ ..... \$1.75
$3\frac{1}{4} \times 4\frac{1}{4}$ ..... 1.50	$4 \times 5$ ..... 1.50	$6\frac{1}{2} \times 8\frac{1}{2}$ ..... 2.00

### Eastman Plate Holder

This holder is made with a bottom flap, avoiding all danger of the plates falling out. It is strongly constructed, has patented spring-finger light-lock, and is made to fit both models of Eastman View Camera. Slides are of lacquered press-board.

$5 \times 7$ ..... \$1.75	$8 \times 10$ ..... \$2.00
$6\frac{1}{2} \times 8\frac{1}{2}$ ..... 1.85	$7 \times 11$ ..... 2.00

### Universal Plate Holder

Made in the same style as the Eastman Holder but to fit Empire State and Premo View Cameras.

$5 \times 7$ ..... \$1.75	$8 \times 10$ ..... \$2.00	$14 \times 17$ ..... \$6.00
$6\frac{1}{2} \times 8\frac{1}{2}$ ..... 1.85	$11 \times 14$ ..... 5.00	

### Eastman Portrait Film Holder

Adapts any Eastman View, Universal or Premo View Camera to the use of cut film. Give exact designation of camera when ordering.

$5 \times 7$ ..... \$1.75	$8 \times 10$ ..... \$2.00	$11 \times 14$ ..... \$5.00
$6\frac{1}{2} \times 8\frac{1}{2}$ ..... 1.85	$7 \times 11$ ..... 2.00	

### Film Sheaths

By inserting a film sheath a plate holder will take cut film. Made of aluminum, ribbed to insure a perfect focal plane.

#### Kodak Cut Film Sheath

$2\frac{1}{4} \times 3\frac{1}{4}$ \$ .10	$3\frac{1}{4} \times 4\frac{1}{4}$ \$ .10	$3\frac{1}{4} \times 5\frac{1}{2}$ \$ .15	$4 \times 5$ \$ .15
--	--	--	------------------------

#### No. 2 Eastman Film Sheath

$5 \times 7$ \$ .20	$6\frac{1}{2} \times 8\frac{1}{2}$ \$ .25	$8 \times 10$ \$ .30
------------------------	--	-------------------------

## Premo Film Pack Tank



This outfit provides a simple, effective method of developing all or part of a film pack at once and getting negatives of uniform quality. It is made in three sizes, two of which are designed to hold twelve films. The third size holds six  $5 \times 7$  films.

Each film is slipped into a compartment of the cage, as shown in the illustration. After the cage is loaded it is immersed in the developer that is contained in the solution cup, which is light-tight when covered. The time and temperature method of developing then proceeds.

### THE PRICE

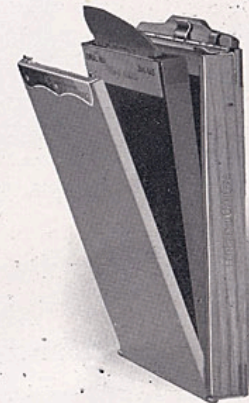
Film Pack Tank No. 1, for twelve $1\frac{1}{2} \times 2\frac{1}{16}$ or $2\frac{1}{4} \times 3\frac{1}{4}$ films.....	\$1.75
Film Pack Tank No. 2, for twelve $2\frac{1}{2} \times 4\frac{1}{4}$ , $3\frac{1}{4} \times 4\frac{1}{4}$ , $3 \times 5\frac{1}{4}$ , $3\frac{1}{4} \times 5\frac{1}{2}$ or $4 \times 5$ films.....	3.50
Film Pack Tank No. 3, for six $5 \times 7$ films.....	4.00

## Premo Film Pack Adapter

By using this attachment any camera that will take a Premo Plate Holder can be loaded in daylight with film packs of twelve exposures each. The adapter slips into the back of the camera just as a plate holder does.

A dark slide is provided so that the adapter may be removed between exposures, to permit focusing on the ground glass or the withdrawal of one or more films for development.

This adapter offers, therefore, the advantages of daylight loading, reduced bulk and weight, and speed in changing films between exposures.



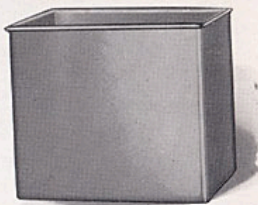
Size	Price
$2\frac{1}{4} \times 3\frac{1}{4}$ .....	\$1.25
$3\frac{1}{4} \times 4\frac{1}{4}$ .....	1.50
$3 \times 5\frac{1}{4}$ .....	1.75
3A ( $3\frac{1}{4} \times 5\frac{1}{2}$ ).....	1.75
$4 \times 5$ .....	1.75
$5 \times 7$ .....	2.50



## Kodak Developing Box No. 1

This tank provides a swift and easy means of obtaining uniform development of Kodak Cut Film. It takes twelve  $2\frac{1}{4} \times 3\frac{1}{4}$ ,  $3\frac{1}{4} \times 4\frac{1}{4}$ ,  $3\frac{1}{4} \times 5\frac{1}{2}$  or  $4 \times 5$  films, each suspended in the solution from a Kodak Cut Film Developing Hanger. Development proceeds by the time and temperature method.

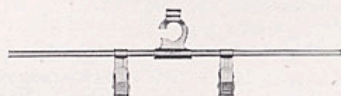
The tank is made of Monel metal and measures  $4 \times 5\frac{1}{4} \times 6$  inches.



### THE PRICE

Kodak Developing Box No. 1, without hangers..... \$2.00

## Kodak Cut Film Developing Hanger



For use with the Kodak Developing Box No. 1. It is nine inches long so that it lies securely across the top of the tank. The clips, which grip the edges of the film, are of Monel metal.

### THE PRICE

Kodak Cut Film Developing Hanger..... \$ .20

## Eastman Developing and Fixing Box

Made of hard rubber. For the larger sizes of cut film. During development or fixing, the films are suspended in Eastman Film Developing Hangers No. 4.

### THE PRICE

No. 2 for 10 $5 \times 7$ films	No. 3 for 25 $5 \times 7$ or $6\frac{1}{2} \times 8\frac{1}{2}$ films	No. 4 for 27 $5 \times 7$ or 16 $6\frac{1}{2} \times 8\frac{1}{2}$ , $8 \times 10$ or $7 \times 11$ films
\$4.00	\$6.00	\$6.00

## Eastman Film Developing Hanger No. 4

A strong, light metal frame, which holds the film securely in channels without clips.

### THE PRICE

Eastman Film Developing Hanger No. 4	$5 \times 7$ \$8.60	$6\frac{1}{2} \times 8\frac{1}{2}$ \$8.75	$8 \times 10$ \$8.75	$7 \times 11$ \$8.75
--------------------------------------	------------------------	--	-------------------------	-------------------------

## Eastman Plate Tank

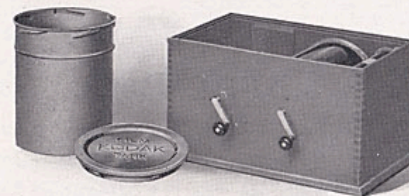
WITH the Eastman Plate Tank twelve, or fewer, plates can be developed at once. With the solution at  $65^{\circ}$  Fahr. fifteen minutes is required but if double strength developer is used the time is cut to seven and one-half minutes. And all the negatives are certain to be of uniform quality.



### THE PRICE

Eastman Plate Tank,  $4 \times 5$ , for  
 $4 \times 5$ ,  $3\frac{1}{4} \times 5\frac{1}{2}$  or smaller  
plates ..... \$ 3.50  
Eastman Plate Tank,  $5 \times 7$  .... 5.50  
Eastman Plate Tank,  $8 \times 10$  .... 10.00

## Kodak Film Tank

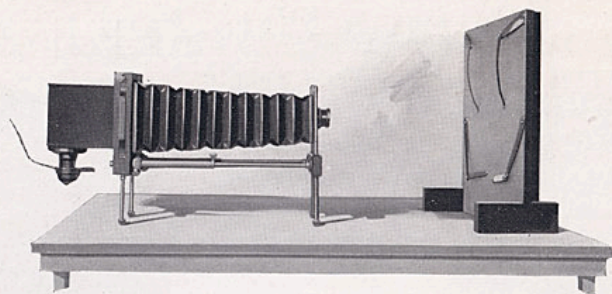


Eastman Cartridge Film, used in Folding Cartridge Premos, can be developed in daylight by the Kodak Film Tank. A convenient, simple method of assuring properly developed negatives.

### PRICES

Brownie Kodak Film Tank, for No. 2 Cartridge Premo and No. 2 Folding Cartridge Premo cartridges, complete ..... \$3.50  
 $2\frac{1}{2}$ -inch Kodak Film Tank, for cartridges having a film width of  $2\frac{1}{2}$  inches or less, complete ..... 4.50  
 $3\frac{1}{2}$ -inch Kodak Film Tank, for cartridges having a film width of  $3\frac{1}{2}$  inches or less, complete ..... 5.50





## Kodak Enlarging Outfit

**F**OR the amateur who wishes to make his own enlargements this is a practical and reliable equipment. The negative carrier takes films or plates of all sizes up to 4 x 6 inches. Enlargements may be made to any size within the easel area, 14 x 17 inches.

By the use of a portrait attachment, reductions may be made for lantern slides or other purposes.

Kodak Enlarging Outfit, including enlarging camera with lens, lamphouse, cord, plug and socket, without the necessary 60-watt Mazda bulb..... \$20.00  
Lantern Slide Block (attaches to easel) ..... .75  
Kodak Portrait Attachment No. 5..... .75

## Brownie Enlarging Camera

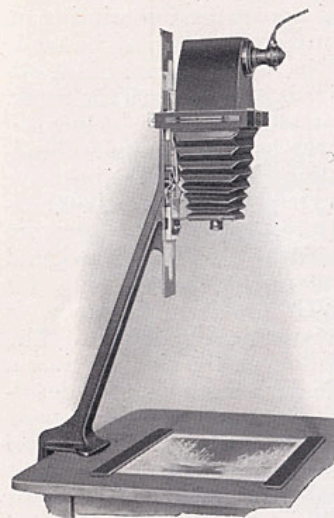


**T**HE Brownie Enlarging Camera consists of a light-tight cone with attachments to hold a negative at the small end, and a sheet of Bromide or Velox paper at the other. The cameras, except the No. 2 Brownie Post Card, are collapsible, and may be folded flat when not in use.

No. 2 Brownie Postcard Enlarging Camera for postcard (3¼ x 5½) enlargements from 2¼ x 3¼ negatives \$3.71  
No. 2 Brownie Enlarging Camera, for 5 x 7 enlargements from 2¼ x 3¼ negatives..... 4.86  
No. 3, for 6½ x 8½ enlargements from 3¼ x 4¼ negatives..... 6.38  
No. 3A for 7 x 11 enlargements from 3¼ x 5½ negatives or 6¼ x 10½ enlargements from 2½ x 4½ negatives..... 6.91  
No. 4 for 8 x 10 enlargements from 4 x 5 negatives or 6½ x 10 enlargements from 3¼ x 5½ negatives.... 6.91

*The Prices of Cameras and Outfits Include the Excise Tax.*

## The Kodak Auto-Focus Enlarger



**W**ITH this new self-focusing camera, enlarging becomes almost as easy and rapid as contact printing. As the camera is moved up and down on its standard, to make the image larger or smaller, a vertical cam keeps the focus critically sharp. The mechanism is accurate and positive and the whole apparatus is sturdily built.

The standard can be clamped firmly to an ordinary table while the Bromide paper, which lies flat on the table top, is held in position by a quickly

adjusted paper holder, without clips or tacks.

Prints from 1½ to 3½ diameters can be made from either plate or film negatives up to 4 x 6 inches. The largest possible print is 14 x 21 inches. A 2¼ x 3¼ negative will make a 7⅞ x 11⅜ enlargement.

The lens is a Kodak Anastigmat, which assures the best possible definition in the print. A special diffusing disc is supplied separately, for obtaining soft focus effects.

### THE PRICE (Including Excise Tax)

Kodak Auto-Focus Enlarger with Kodak Anastigmat lens, electric cord and plug (without the 60-watt Mazda lamp required), set of six flexible metal masks..... \$35.00  
Diffusing Disc..... 1.00

### Eastman Bromide Papers

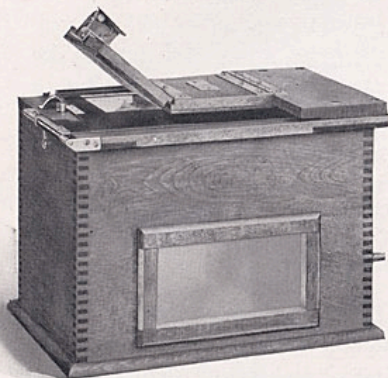
Following are prices per dozen of the most popular of the sixteen sizes in which Eastman Bromide Papers, double weight, are listed.

5 x 7—\$0.60; 6½ x 8½—\$1.00; 7 x 11—\$1.40; 8 x 10—\$1.40;  
10 x 12—\$2.15; 11 x 14—\$2.65; 14 x 17—\$3.95; 16 x 20—\$5.25.



## Kodak Amateur Printer

A CONVENIENT and practical apparatus for printing on developing-out paper. White margin prints may be made in any size from  $1\frac{5}{8} \times 2\frac{1}{2}$  to  $4 \times 5\frac{1}{2}$  inches, by means of the adjustable masking device. The negative is held beneath the mask.



The Kodak Amateur Printer..... \$10.00

A small, red electric lamp within the box gives ample illumination for placing the negative and paper. When ready for exposure, the hinged pressure board is closed and locked, and a 60-watt Mazda Lamp, for which provision is made, is automatically lighted. The window on the side provides a safe dark-room light for developing-out and bromide papers.

It is completely equipped with  $5\frac{1}{2}$  feet of electric light cord, and socket, but without bulb.

## Velox Transparent Water Color Stamps

BEAUTIFULLY colored prints, contact or enlarged, may be made by the use of Velox Transparent Water Color Stamps.

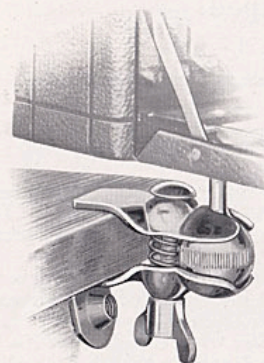
Artistic skill or training is unnecessary. With a brush or two and the book of stamps excellent results may be attained. Directions are given for coloring prints and lantern slides.

Each book includes twelve sheets of colors and each sheet is divided by perforations into twenty-six stamps. To use any color tear off a stamp, place it in a small saucer, or in the palette that is supplied with the outfit, and cover with about a teaspoonful of water.

Velox Transparent Water Color Stamps, complete booklet, 12 colors.....	\$ .45
Separate Color Leaves, one sheet.....	.04
Set of 3 Special Brushes, per set.....	.50
Mixing Palette.....	.25
Velox Transparent Water Color Stamp Outfit, including book, three brushes and palette.....	1.00

## Accessories

### The Optipod



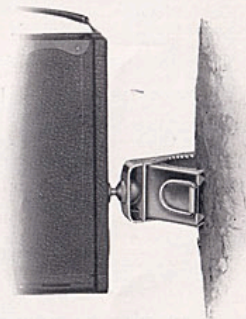
The Optipod is easily carried in the pocket and takes the place of a tripod when it is necessary to provide a firm support for the camera. It clamps firmly to a chair, table, fence, windshield or similar object. The direction and position of the camera may be quickly adjusted by loosening the thumb-screw which controls the tension on the ball joint. This feature makes the Optipod useful on a tripod also.

The Optipod, finished in nickel ..... \$1.25

### The Kodapod

This little device serves the purpose of a tripod, and may readily be carried in the pocket. Its jaws are actuated by a strong spring, and when attached to a tree, fence or similar object, it provides a firm support for the average size pocket camera. The head may be adjusted, to tilt the camera to the most desirable position.

The Kodapod ..... \$1.75



### Kodak Self Timer



The Kodak Self Timer automatically releases the shutter after any time interval between the limits of  $\frac{1}{2}$  second and one minute thus permitting the operator of the camera to be included in the picture.

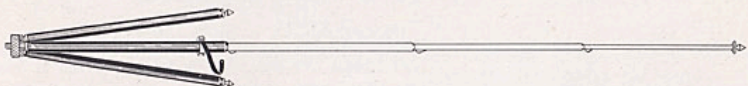
The Self Timer is made in one size, and will operate any shutter that is fitted with a cable release.

Kodak Self Timer..... \$1.25



## Tripods

### Kodak Metal Tripod



Combining light weight and compactness with exceptional rigidity, this is an ideal tripod for cameras up to 5 x 7.

The telescoping legs are of brass tubing—lower sections nickered, the upper black enameled and when extended each section catches and holds firmly. To close, it is necessary to press in the top catch only, the others then releasing automatically.

The Nos. 1 and 2 have revolving heads for attaching to camera. With this construction the camera may be swung, so as to take in the desired view without moving the tripod, a distinct advantage over other types of tripods. The Nos. 1 and 2 also have straps for holding the legs in place when closed. The No. 6 has folding head and folds into such a compact flat package that it can easily and conveniently be carried in the pocket.

	Sections	Closed	Length Extended	Weight	Price
Kodak Metal Tripod No. 0	3	15½ in.	39½ in.	15 ozs.	\$2.75
Kodak Metal Tripod No. 1	4	15 in.	48½ in.	24½ ozs.	4.50
Kodak Metal Tripod No. 1C	4	15¼ in.	48½ in.	25½ ozs.	4.00
Kodak Metal Tripod No. 2	5	13½ in.	49½ in.	25 ozs.	5.00
Kodak Metal Tripod No. 2C	5	13¾ in.	49½ in.	26 ozs.	4.50
Kodak Metal Tripod No. 6	6	11¾ in.	40 in.	24 ozs.	6.50
Leatherette Case for No. 0 or No. 1					.90
Leather Carrying Case for Nos. 0, 1, or 2					2.70
Leather Carrying Case for No. 6					3.15
Rubber tips for use indoors, for any size, per set of three					.10

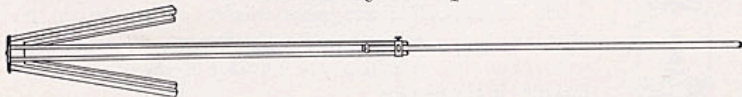
### Flexo Tripod



For cameras up to and including the 5 x 7 size this is a very satisfactory tripod at low price. Only clear, straight-grained spruce is used in its construction.

Price, \$1.50

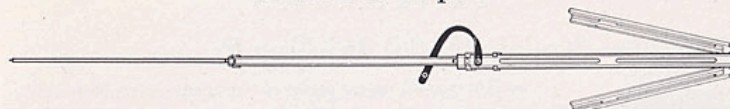
### Bull's-Eye Tripod



Two sections. Aluminum revolving head. Made of maple with brass fittings. For 4 x 5 cameras, or smaller. Length, extended, 42½ inches; folded, 24 inches. The only two-section tripod that will go into a suit case.

Price, \$2.00

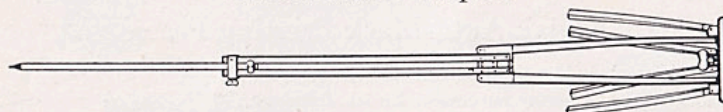
### Standard Tripod



The feature of this tripod is the automatic locking of the sections when they are extended. Light, compact and rigid. Fixed, non-detachable head. Length, folded, 21 inches; extended, 53½ inches. Weight 18 ounces. Natural finish, brass trimmings.

Price, \$3.50

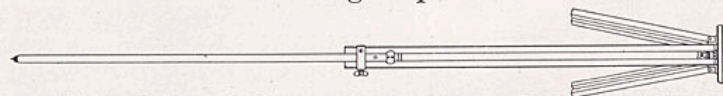
### Combination Tripod



This tripod is constructed on the sliding and folding principle. Made of ash and well finished.

Style	Size of Camera	Weight	Price
No. 2½	6½ x 8½ and smaller	3 lbs.	\$5.00
No. 3	8 x 10 and 10 x 12	4 lbs.	5.50
No. 4	11 x 14 and 14 x 17	5 lbs.	6.50
No. 5	17 x 20 and 20 x 24	8 lbs.	9.00

### Sliding Tripod



A rigid tripod for use with larger and heavier cameras. The No. 1 and No. 2 are made of spruce, the No. 3 and No. 4 of ash.

Style	Size of Camera	Weight	Price
No. 1	5 x 7 and smaller	2 lbs.	\$2.50
No. 2	5 x 8 and 6½ x 8½	2 lbs. 8 ozs.	3.00
No. 3	8 x 10 and 10 x 12	4 lbs. 8 ozs.	3.50
No. 4	11 x 14 and 14 x 17	6 lbs. 8 ozs.	5.00

### Eastman Tripod Brace

A simple device that firmly holds in position each leg of the tripod after it has been set up and adjusted

Eastman Tripod Brace..... \$1.35

### R. O. C. Tripod Truck

A folding tripod support, with casters for indoor use. Holds the tripod securely and provides a practical, portable camera stand.

R. O. C. Tripod Truck, No. 1 for average tripods	\$1.50
R. O. C. Tripod Truck, No. 2 for very heavy tripods	1.75



## Accessories

### Kodak Maskit Printing Frame

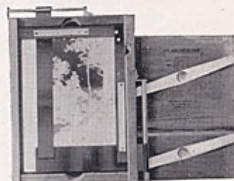


Furnished with a series of paper masks and a patented simple-working device on the inside of the frame which holds mask and negative firmly together and assures uniform white margins.

Kodak Maskit Printing Frame, $3\frac{1}{4} \times 4\frac{1}{4}$	\$ .65
Kodak Maskit Printing Frame, $3\frac{1}{4} \times 5\frac{1}{2}$	.70
Kodak Maskit Printing Frame, $5 \times 7$	.85

### Kodak Auto-Mask Printing Frame

An adaptation to a printing frame of the masking principle of the highly successful Kodak Amateur Printer. Will accommodate negatives of any size up to and including  $4 \times 5$  and  $3\frac{1}{4} \times 5\frac{1}{2}$ . It is an easy matter to adjust the mask for uniform masking of any negative you care to use, a graduated scale attached to the stationary guide aiding in sizing and holding exact dimensions of the mask openings.



Kodak Auto-Mask Printing Frame..... \$1.50

### Eastman Printing Frame

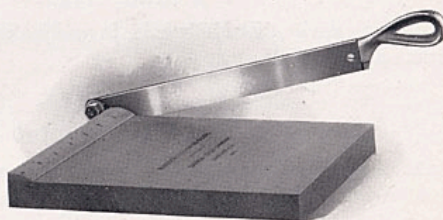
A standard, strongly constructed printing frame.

Eastman Printing Frame, $2\frac{1}{4} \times 3\frac{1}{4}$ plates or $1\frac{1}{8} \times 2\frac{1}{2}$ films or smaller.....	\$ .35
Eastman Printing Frame, $2\frac{1}{2} \times 4\frac{1}{4}$ , $3\frac{1}{4} \times 4\frac{1}{4}$ or $4 \times 5$ .....	.40
Eastman Printing Frame, $3\frac{1}{4} \times 5\frac{1}{2}$ , for films.....	.40
Eastman Printing Frame, $3\frac{1}{4} \times 5\frac{1}{2}$ , for plates.....	.45
Eastman Printing Frame, $5 \times 7$ .....	.55

### Kodak Trimming Board

A thoroughly reliable trimming board at a moderate price, constructed of hard wood with natural finish. The blade is of the best steel and a rule is fitted to the board.

No. 1, $5 \times 5$ inches.....	\$ .65
No. 2, $7 \times 7$ inches.....	.85
Transparent Trimming Guide for No. 2.....	.35



## Accessories

### Kodak Candle Lamp

This lamp is collapsible, well made of special tested ruby fabric, bound in metal frames. Gives good light.

Kodak Candle Lamp.....	\$ .40
Extra Candles for same, per doz.....	.40



### Kodak Dark-Room Lamp

The Kodak Dark-Room Lamp is oil burning and is fitted with both orange and ruby glass.

No. 2 Kodak Dark-Room Lamp.....	\$1.25
---------------------------------	--------

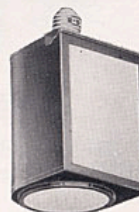


### Brownie Safelight Lamp

An inexpensive but reliable safelight lamp for the amateur. The complete lamp screws into any electric socket. It takes a 15-watt Mazda bulb. It has a removable circular safelight in the bottom and a rectangular one in the side.

A very convenient, clean lamp for the average amateur and easily carried in the bag of the traveler or vacationist for use as required.

Brownie Safelight Lamp.....	\$1.35
Extra Safelights for End, $\$2.25$ ; for Side.....	.40



### Kodak Safelight Lamp

Those who have electricity in the house will find this lamp much superior to other types for dark-room work. It is supplied with a  $5 \times 7$ , Series 1, Safelight for use with films or plates not highly color sensitive. For more advanced work Safelights of other series may be readily substituted.

Price includes safelight and four feet of electric cord with socket.

Kodak Safelight Lamp.....	\$3.25
Extra Safelights, $5 \times 7$ , any Series.....	.75



### Safelights

Any of the following safelights are available for Kodak and Brownie Safelight Lamps.

- Series 00—Yellow light, for use with gaslight papers.
- Series 0—Bright orange light, for use with bromide paper and lantern plates.
- Series 1—Orange safelight, for use with films or plates not highly color sensitive.
- Series 2—Safelight for extra rapid orthochromatic plates sensitive to green but not red.
- Series 3—Green safelight, for use with red-sensitive panchromatic plates.
- Series 4—Bright green safelight, for use with ordinary plates, for those who cannot use a red light. Not safe for orthochromatic plates.



## Accessories

### Kodaloid Printing Masks

Transparent ruby color masks for use with Maskit Printing Frames in sets of three, each with different openings.

For $3\frac{1}{4} \times 4\frac{1}{4}$ frame, per set of three.....	\$.30
For $3\frac{1}{4} \times 5\frac{1}{2}$ frame, per set of three.....	.30
For $5 \times 7$ frame, per set of three.....	.45

Black Paper Masks, same sizes as above

Price, per set of three, any size.....	\$.10
--	-------

### Flexo Print Roller



An inexpensive but thoroughly satisfactory roller for amateur use; has black enameled frame and a 4-inch rubber roller.

Price, \$.30

### Kodak Print Roller

The best roller made for general amateur use; has double rubber rollers, 6 inches long, mounted on a nicked frame.

Price, \$1.00



### Eastman Photo Paste

A first quality, solid, white paste. Will not cockle or discolor print or mount.

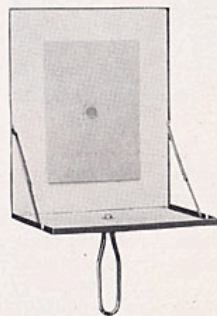


3 ounce tube.....	\$.20
4 ounce jar.....	.25
8 ounce jar.....	.35

### Flash-Light Material

The simplest method of making flash-light pictures is by means of Eastman Flash Sheets and Kodak Flash Sheet Holder. The sheets burn slowly, giving a broad, soft light, that will not so startle the subject as to give a staring effect to the eyes.

The holder is a genuine innovation. A saw tooth holds the sheet in proper position. It is lighted from the back through an aperture provided in the center for that purpose. Thus the holder is always between the operator and the flash sheet. It may be held in the hand or supported on a tripod, a socket being provided for the latter purpose.



No. 1 Flash Sheets, per package of $\frac{1}{2}$ dozen sheets, $3 \times 4$ .....	\$.35
No. 2 Flash Sheets, per package of $\frac{1}{2}$ dozen sheets, $4 \times 5$ .....	.50
No. 3 Flash Sheets, per package of $\frac{1}{2}$ dozen sheets, $5 \times 7$ .....	.84
Kodak Flash Sheet Holder.....	1.25

## Accessories

### Developing Trays

Bulls-Eye, $3\frac{1}{4} \times 4\frac{1}{4}$ .....	\$.15	Bulls-Eye, 5 x 8.....	\$.40
Bulls-Eye, 4 x 5.....	.17	Bulls-Eye, $6\frac{1}{2} \times 8\frac{1}{2}$ .....	.60
Bulls-Eye, $3\frac{1}{4} \times 5\frac{1}{2}$ .....	.18	Bulls-Eye, 8 x 10.....	.80

### Eastman Visible Graduate

This graduate, as its name implies, may be read easily in the dark-room under the rays of the ruby light.

The graduations are opaque and not translucent as is the case with ordinary graduates.

2 ounce.....	\$.30	16 ounce.....	.80
4 ounce.....	.40	32 ounce.....	1.00
8 ounce.....	.50		



### Thermometer Stirring Rod



Two articles of great use to the amateur, combined in one. The rod is  $\frac{1}{4}$ -inch in diameter and 9 inches long. One end is flattened for crushing purposes. The thermometer is carefully tested and is dependably accurate.

Price, \$1.00

### Eastman Thermometer



Especially suitable for determining the temperature in tank development. Made with curved back to fit inside of tank.

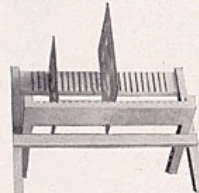
Price, \$.75

### Developing and Printing Outfit

Eastman 3A Outfit includes every dark-room requisite for developing and printing twenty-four  $3\frac{1}{4} \times 5\frac{1}{2}$  or smaller pictures.

1 Kodak Candle Lamp, 40c; 1 Printing Frame, 40c; 1 Glass for Frame, 5c; 1 4-ounce Graduate, 15c; 1 Stirring Rod, 06c; 4 Developing Trays, 40c; 5 Tubes Eastman Special Developer, 30c;  $\frac{1}{2}$  pound Kodak Acid Fixing Powder, 20c; 2 dozen  $3\frac{1}{4} \times 5\frac{1}{2}$  Velox Paper, 40c; 2 ounces Nepera Solution, for developing Velox, 20c; Instruction Book. These articles, if purchased separately, would cost \$32.56. Price complete, neatly packed, \$1.65.

Eastman A B C Outfit, similar to above, but for 4 x 5 or smaller negatives, \$1.65.



### Premo Negative Rack

This rack accommodates negatives of all sizes. It folds flat when not in use.

No. 1, for 12 negatives.....	\$.35
No. 2, for 24 negatives.....	.45



## Kodak Dry Mounting Tissue

Mounts prints, even on the thinnest album leaf without curl. The simplest method of mounting, no apparatus being required—just fix the tissue on print, lay on mount and press with a warm flat iron; no sticky fingers, no muss of any kind.

### PRICES

Size, $3\frac{1}{2} \times 3\frac{1}{2}$ , 3 dozen.....	\$ .10	Size, 4 x 5, 2 dozen.....	\$ .10
Size, $3\frac{1}{4} \times 4\frac{1}{4}$ , 3 dozen.....	.10	Size, $4\frac{1}{4} \times 6\frac{1}{2}$ , 1 dozen.....	.10
Size, $3\frac{1}{4} \times 5\frac{1}{2}$ , 2 dozen.....	.10	Size, 5 x 7, 1 dozen.....	.10

## Plate Holder and Adapter Slides Lacquered Press-board

$3\frac{1}{4} \times 4\frac{1}{4}$ .....	\$ .25	5 x 7.....	\$ .30	8 x 10.....	\$ .50
$3\frac{1}{4} \times 5\frac{1}{2}$ .....	.25	$6\frac{1}{2} \times 8\frac{1}{2}$ .....	.40	11 x 14.....	.75
4 x 5.....	.25				

## Plate Holder Kits

Made of well seasoned wood that will not warp, neatly finished in dead black, and of correct size to nest perfectly.

Size Outside	Size of Opening for Plate	
4 x 5	$3\frac{1}{4} \times 4$ , $3\frac{1}{4} \times 4\frac{1}{4}$ .....	\$ .25
5 x 7	$3\frac{1}{4} \times 4$ , $3\frac{1}{4} \times 4\frac{1}{4}$ , $3\frac{1}{4} \times 5\frac{1}{2}$ , 4 x 5, $4\frac{1}{4} \times 6\frac{1}{2}$ .....	.35
5 x 8	$3\frac{1}{4} \times 4\frac{1}{4}$ and 4 x 5.....	.35
$6\frac{1}{2} \times 8\frac{1}{2}$	$3\frac{1}{4} \times 4\frac{1}{4}$ , 4 x 5, $3\frac{1}{4} \times 5\frac{1}{2}$ , $4\frac{1}{4} \times 6\frac{1}{2}$ , $4\frac{3}{4} \times 6\frac{1}{2}$ , 5 x 7.....	.40
7 x 11	5 x 7.....	.50
8 x 10	$3\frac{1}{4} \times 4\frac{1}{4}$ , $3\frac{1}{4} \times 5\frac{1}{2}$ , 4 x 5, $4\frac{1}{4} \times 6\frac{1}{2}$ , $4\frac{3}{4} \times 6\frac{1}{2}$ , 5 x 7, 5 x 8, $6\frac{1}{2} \times 8\frac{1}{2}$ .....	.50

## Film Pack Developing Hanger

For use with the vertical tank system of development employed by photo finishing departments.

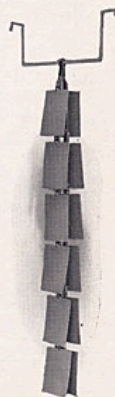
The improved hanger has twelve film clips of new design that provide greater rapidity and security in attaching the films. The construction also provides against the clips becoming inoperative through the chemical action of the developing solutions.

The order number may be written in pencil upon the hanger top.

The films are developed, rinsed, fixed, washed and dried without removal from the hanger.

### PRICES

Film Pack Developing Hanger.....	\$1.50
Extra Clips for Hangers, per dozen.....	.90



## Kodak Portrait Attachments and Kodak Sky and Color Filters

THE Kodak Portrait Attachment is simply an extra lens, which slips on the front of the regular lens, and permits working with the camera close to the subject, thus producing a larger image than could otherwise be made. It is especially useful in making head and shoulder portraits, flower and plant studies.

The upper half of the *Kodak Sky Filter* is stained yellow, and serves to equalize the intensity of light transmitted by sky and foreground in landscape photography. The *Kodak Color Filter* is stained yellow throughout, and serves to equalize the light values of different colors.

### PRICES

Order by No.	Camera	Lens	Portrait Attachment	Sky & Color Filter
0	For No. 1	Premo Jr.	Single lens	\$ .75
0	" 1A	"	Single	.75
3	" 3	"	Single	.75
3	" 1	Premoette Jr.	f.7.7	.75
8	" 1	"	Single	.75
8	" 1	"	R. R.	.75
3	Premoette Sr.	$2\frac{1}{2} \times 4\frac{1}{4}$	R. R.	.75
13	"	$2\frac{1}{2} \times 4\frac{1}{4}$	f.7.7	.75
3	"	$3\frac{1}{4} \times 4\frac{1}{4}$	R. R.	.75
13	"	$3\frac{1}{4} \times 4\frac{1}{4}$	f.7.7	.75
5	"	$3\frac{1}{4} \times 5\frac{1}{2}$	R. R.	.75
7	"	$3\frac{1}{4} \times 5\frac{1}{2}$	f.7.7	.75
8	Pocket Premo	Single	"	.75
8	No. 12	"	R. R.	.75
6	" 12	"	Kodak Anastigmat f.6.3.	.75
6	" 12	"	All B. & L. Anastigmats	.75
3	" 12	"	f.7.7 lens	.75
5	" 8	4 x 5	R. R.	.75
5	" 8	$3\frac{1}{4} \times 5\frac{1}{2}$	R. R.	.75
5	" 8	5 x 7	R. R.	.75
7	" 8	$3\frac{1}{4} \times 5\frac{1}{2}$	f.7.7	.75
5	" 9	4 x 5	R. R.	.75
5	" 9	$3\frac{1}{4} \times 5\frac{1}{2}$	R. R.	.75
5	" 9	5 x 7	R. R.	.75
7	" 9	4 x 5	f.7.7	.75
7	" 9	$3\frac{1}{4} \times 5\frac{1}{2}$	f.7.7	.75
5	" 10	"	R. R.	.75
0	" 2	Box Cartridge Premo	Single	.75
0	" 2A	"	Single	.75
4	" 2C	"	Single	.75
8	" 2	Folding Cartridge Premo	Single	.75
8	" 2	"	R. R.	.75
3	" 2A	"	Single	.75
3	" 2A	"	R. R.	.75
5	" 2C	"	Single	.75
5	" 2C	"	R. R.	.75
5	" 3A	"	Single	.75
5	" 3A	"	R. R.	.75



## Albums

### The Kodak Album



Loose-leaf, open back style. Made of finest quality genuine leather and finished in a new pattern—etched brocade polychrome in blended Olive Grey and Brown tints. Stamped with word "Photographs." 50 black leaves held in place by silk finished cord.

5 x 8, GA, Olive Grey Blend	\$2.50	BA, Brown Blend Cover	\$2.50
7 x 11, GB, Olive Grey Blend	3.75	BB, Brown Blend Cover	3.75
10 x 12, GC, Olive Grey Blend	5.50	BC, Brown Blend Cover	5.50
11 x 14, GD, Olive Grey Blend	6.00	BD, Brown Blend Cover	6.00

Packages of 12 extra leaves, A, \$.15; B, .18; C, .30; E, .40.

### The Beverly Album

A new and especially handsome loose-leaf, open back album. Cover is of blue-black De Luxe Artificial Leather. The word "Photographs" is embossed in old gold on cover; 50 black leaves held in place by silk finished cord.

A, 5 x 8, \$.20, B, 7 x 11, \$.275, C, 10 x 12, \$.40, D, 11 x 14, \$.45, E, 8 x 10, \$.30

Package of 12 extra leaves A, \$.15; B, .18; C, .30; E, .40; K, .20.

### The La Nouvelle Album

Loose-leaf, open back style. 50 black leaves held in place by cord through cover and metal tubes. "Photographs" stamped in gold on an embossed dark brown alligator pattern imitation leather cover.

A, 5 x 8, \$.110, B, 7 x 11, \$.160, C, 10 x 12, \$.225, D, 11 x 14, \$.250

Package of 12 extra leaves A, \$.15; B, .18; C, .30; E, .40.

### The Toledo Album

Loose-leaf style. No exposed metal parts. 50 jet black leaves held in place by a cord and holder inside of cover. Cover is made of De Luxe Artificial Leather embossed and beautifully tinted in multi-shades.

A, 5 x 8, \$.20, B, 7 x 11, \$.275, C, 10 x 12, \$.40, D, 11 x 14, \$.45

Package of 12 extra leaves A, \$.15; B, .18; C, .30; E, .40.

### Eastman Film Negative Album



For 100 negatives, 2½ x 4¼ or smaller	\$ .75
For 100 negatives, 4 x 5 or smaller	1.00
For 100 negatives, 3¼ x 5½ or smaller	1.00
For 100 negatives, 5 x 7 or smaller	1.50

## Card Mounts

### Baltic

No.	For Prints	Per 50	Per 100
0	1½ x 2½	\$1.05	\$2.10
1	2¼ x 3¼	1.30	2.60
1-A	2½ x 3½	1.40	2.80
2	3½ x 3½	1.50	3.00
2-C	2½ x 4½	1.55	3.10
3	3¼ x 4¼	1.50	3.00
3-A	3¼ x 5½	1.70	3.40
4	4 x 5	2.00	4.00
4-A	4¼ x 6½	2.50	5.00
5	5 x 7	3.10	6.20

### Riviera

No.	For Prints	Per 50	Per 100
0	1½ x 2	\$ .65	\$1.25
1	2¼ x 2½	.70	1.35
1-A	2¼ x 3¼	.75	1.50
2	2½ x 3½	.80	1.60
2-C	2½ x 4½	.95	1.85
3	3½ x 3½	.95	1.85
3-A	3¼ x 4¼	.95	1.85
4	4 x 5	1.10	2.15
4-A	4¼ x 5½	1.20	2.35
5	5 x 7	1.60	3.10
		1.75	3.40

### Landscape

No.	For Prints	Price Per 50
A-1	5 x 7	\$3.00
A-2	5 x 7	3.00
B-1	6½ x 8½	4.00
B-2	6½ x 8½	4.00
C-1	8 x 10	5.00
C-2	8 x 10	5.00
D-1	7 x 11	5.25
D-2	7 x 11	5.25

### Enlargement Folder

No.	For Prints	Price Per Pkg. of ½ Doz. Folders
A-1	5 x 7	\$ .81
A-2	5 x 7	.81
B-1	6½ x 8½	.93
B-2	6½ x 8½	.93
C-1	6 x 10	1.05
C-2	6 x 10	1.05
D-1	8 x 10	1.11
D-2	8 x 10	1.11

### Inslip Enlargement Mount

English Gray or Sepia-Buffer

No.	For Prints	Price Per Doz.	No.	For Prints	Price Per Doz.
AA	3¼ x 5½	\$ .90	EE	6½ x 8½	\$1.14
BB	4 x 7	.90	FF	6 x 10	1.26
CC	5 x 7	.90	GG	7 x 11	1.50
DD	5 x 8½	1.02	HH	8 x 10	1.50
JJ	8 x 14	1.02			
KK	11 x 14	1.86			

## Sundries

Cable Release	\$ .35	Premo View Finder	1.50
Film Clips, Kodak Jr. No. 1	.12	Focus Cloth, Rubber	.00
Kodak Film Clips	.30	Bulb and Tube, No. 2	.25
Film Clips, Eastman, 3½-inch, per pair	.25	Bulb and Tube, No. 3	.35
5-inch, per pair	.40	Tubing, Red or Black, per foot	.11
Stirring Rod, Hard Rubber	.30	Tubing, White, per foot	.10
Milled Head Screws for Cameras		Ground Glass—4 x 5	.15
½ inch and smaller	.15	5 x 7	.20
Larger than ½ inch	.20	6½ x 8½	.25
		8 x 10	.30



## Tested Chemicals

Eastman Chemical Outfit, consists of M. Q. and Special Developer, Intensifier, Reducer and Velox Re-developer	\$ .40
Eastman Special Developer Powders, per package, 5 in sealed glass tubes	.30
" Hydrochinon Developer Powders, per dozen	.60
" Hydrochinon Developer Powders, per 1/2 dozen	.30
" Hydrochinon Developer Powders, per package 5 glass tubes	.30
" Pyro Developer Powders, per dozen	.50
" Pyro Developer Powders, per 1/2 dozen	.25
" Pyro Developer Powders, per package 5 glass tubes	.25
Elon, per 1-ounce bottle	.56
Tozol, per 1-ounce bottle	.45
Hydrochinon, per 1-ounce can	.21
Eastman Permanent Crystal Pyro, per 1-ounce bottle	.27
Velox, Re-developer Tubes, package of 12 tubes	.84
Hypo Sulphite of Soda, granular, per pound	.18
Alum, powdered, per pound	.20
Kodak Acid Fixing Powder, per pound package	.35
" Acid Fixing Powder, per 1/2 pound package	.20
" Acid Fixing Powder, per 1/4 pound package	.15
Eastman Intensifier, glass tube, per tube	.15
" Reducer, per box of 5 tubes	.50
" Opaque No. 1, per tube	.25
Potassium Bromide, per ounce can	.09
Acetic Acid, 28 per cent., per 1-pound bottle	.35
Citric Acid, 4-ounce bottle	.34
Eastman Tested Carbonate of Soda (desiccated), per 1-pound bottle	.40
" Tested Sulphite of Soda (desiccated), per 1-pound bottle	.45

These prices subject to change without notice.

## B. & L. Extreme Wide-Angle Lenses

### Series V.f. 18

Designed for extreme wide-angle work, this lens embraces a field of 110 degrees.

No.	Size	Equivalent Focus in barrel	Price in barrel	No.	Size	Equivalent Focus in barrel	Price in barrel
1	4 x 5	3 1/8 in.	\$25.50	3	6 1/2 x 8 1/2	5 1/8 in.	\$32.00
2	5 x 7	4 1/8 in.	25.50	4	8 x 10	7 1/8 in.	38.50

The prices of B. & L. Extreme Wide Angle Lenses include the Excise Tax.

### Terms

The prices in this catalog are strictly net, except to regular dealers who carry our goods in stock. *These prices are, however, subject to change without notice.* For the convenience of our customers we recommend that they make their purchases from a dealer in photographic goods, as by so doing they can save both time and transportation charges.

## Eastman Kodak Company

Rochester Optical Department

Rochester, N. Y.