

**ORDER BLANK.**

.....18

**The Photographic Times Publishing Association,**

423 BROOME STREET, NEW YORK.

*Please send to address given below, the weekly issue of the PHOTOGRAPHIC TIMES, commencing with .....18, and the AMERICAN ANNUAL OF PHOTOGRAPHY for 18, for which enclosed is \$5.50.*

Name, .....

P. O. ....

County, .....

State, .....

**NOTE.—Please specify whether Weekly or Monthly edition is desired.**

*ILLUSTRATED*

*CATALOGUE*

OF

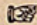
*Photographic*

*Equipments and Materials,*

FOR

*AMATEURS.*

*January 1, 1890.*

 The prices given in this catalogue are liable to fluctuation. When any article is reduced, the buyer will get the benefit without reference to the printed list.

---

## Read Carefully these Few Facts.

—\*—

Presumably the reader of the following pages knows something of the interesting art for which the articles enumerated in this catalogue are provided. If not, he can acquire a general idea of it from what follows, and we shall be pleased, on receipt of fifty cents, to mail to any address a book, in which all the details are given, entitled *How to Make Photographs ; A Manual for Amateurs*, by T. C. Roche, recently published by our house. It has been penned and edited by eminent theoretical and practical photographers, and with the purpose of stating in the most simple and concise language, everything necessary for any one to know who may be disposed to engage in photography as an amateur. It will be found equally serviceable to those who desire to practice the art as an aid in their business or profession, and all its statements may be implicitly relied on for accuracy and practicability.

The introduction of the gelatino-bromide dry plate has so revolutionized photography that but little preliminary knowledge of it is now essential ; in fact, it is astonishing what can be accomplished by totally inexperienced amateurs who may exercise a little taste and judgment.

It is scarcely to be supposed that success should always attend one's first efforts, but rapid progress can generally be made by old or young, lady or gentleman, who may manifest the slightest disposition to excel.

Unlike the old "wet" plate, the gelatino-bromide process has the advantage of admitting a much wider latitude of exposure—that is to say, the actual time which the sensitive plate may now be subjected to light, though still important, is far less so than by the old collodion process, and the subsequent operations are free from the former objections of complexity, uncertainty and stains. The apparatus and chemicals required are also few and inexpensive, and there is nothing which the veriest tyro in chemistry cannot readily master.

Another obvious improvement is recognized in the exceeding lightness and portability of the equipments, and their greater adaptability to the requirements of the public.

Unfortunately the increasing demand has led many persons to engage in the manufacture and sale of apparatus and materials that are quite inadequate for the attainment of satisfactory results. We therefore point with pride to the intrinsic excellence of every item in the following list—the outcome of *more than forty-five years'* diligent effort and experience in the preparation of photographic supplies.

JOHN POLHEMUS,  
PRINTER,  
102 NASSAU ST., NEW YORK.

In selecting an outfit from those described in the following pages there are two axioms it will be well to bear in mind. They are :

First.—The larger the camera, the greater the bulk and weight.

Second.—While a small picture can be made with a large camera, a large picture *cannot* be made with a small camera.

Remember, we do not make a single toy ; all our cameras are practical working instruments such as are in constant use by professional photographers. All are fitted with our Patent Double Dry Plate Holders, which are by far the lightest, tightest and handiest holders made, and have done as much as any other one thing toward giving popularity to our equipments. The equipments are fitted with fine single achromatic lenses, which (with the exception of the 4 x 5) are provided with changeable diaphragms, so that the time of exposure may be varied to suit the subject.

They are adapted for landscapes and out-of-door groups and in a good light require but a second's time (or even less) to make a picture. Amateurs who aim to excel, and with whom the cost is a secondary consideration, are invited to examine the more expensive double achromatic lenses described in the following pages.

Those made by DALLMEYER especially can be depended on as being *absolutely the best in market*. With these the very finest results are possible.

In buying do not forget that you are not going to make an experiment. Your success is assured if you follow the printed directions. Thousands have succeeded before you with only the ordinary amount of brains, and some with less than is allowed to mankind generally. So when you buy, buy as good an outfit as you can afford. With a cheap instrument you can do good work, but with the better grades you can do better work more easily. First decide what size you want, then *get the best you can afford of that size*.

With these few hints and explanations we take pleasure in opening to your view and for your consideration the pages of this little book, with the further assurance that everything therein mentioned is guaranteed to be exactly as described.

## IMPORTANT.

—\*—

In this list the prices of many Cameras, Lenses, Tripods, etc., are given separately, for those who desire to make up an equipment differing from those presented herein.

When the price is given for *camera, holder and carrying case*, it includes *neither lens nor tripod*. Our list has been prepared with great care, and we have endeavored to be explicit enough to enable any one to select such articles as will make a harmonious equipment. The sizes given are the largest that each camera will admit of, but smaller plates can be used in each by means of our inside kits, for each of which we give the outside dimensions with size of plate that can be used in same.

As our equipments are sold at a less price than the several parts could be bought for separately and combined, we suggest the purchase of such *complete*, wherever possible, as a matter of economy. Where lenses different from those accompanying the equipments are required, the price for making up such special outfit can readily be reached, as prices are given for the different parts that can be supplied separately.

When prices for such parts are not given, it designates that such outfit is sold in one way only, *viz., complete*.

As will be seen, a complete outfit for making pictures measuring 4 x 5 inches can be purchased for \$19.00 as follows :

No. 1 Equipment, described on page 2, . . . . .	\$9/00
4 x 5 Developing Outfit, described on page 81, . . . . .	5 25
4 x 5 Printing Outfit, described on page 82, . . . . .	4 75

This will include everything necessary for making and developing one dozen negatives, and making and mounting two dozen prints from these negatives.

The cost of making subsequent pictures would be trifling, as the developing and printing outfits include trays, graduates, funnels, etc., that will last for years, and sufficient chemicals for making several dozen additional negatives and prints.

A corresponding outfit for making 5 x 8 pictures would cost \$22.50, as follows :

No. 2 Equipment, described on page 2, . . . . .	\$10 00
5 x 8 Developing Outfit, described on page 81, . . . . .	6 50
5 x 8 Printing Outfit, described on page 82, . . . . .	6 00

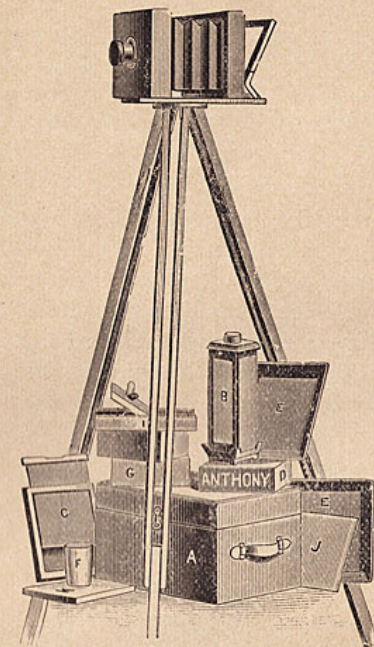
Developing and printing outfits adapted to equipments of other sizes will be found on pages 81 and 82 of this catalogue.

*Catalogue for Amateurs.*

**Eureka School Outfit.**

- A. Carrying Case.
- B. Ruby Lamp.
- C. Double Plate Holder.
- D. Dry Plates.
- EE. Developing Trays.
- F. Glass Graduate.

- G. Developing and Toning Solution.
- H. Hyposulphite Soda.
- I. Printing Frame.
- J. Sensitized Paper.
- K. Card Mounts.
- Focusing Cloth.

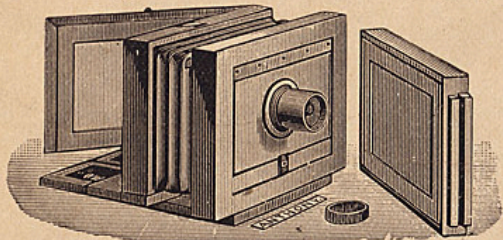


**T**HIS EQUIPMENT is intended as a means of learning the elementary steps of photography by practical working, at an extremely low price, and, while none of the several parts of the equipment are made with elaborate finish or ornamentation, they are all practicable and good results can be obtained with them, as the pictures produced by the equipment demonstrate. The equipment comprises a 4 x 5 camera, with lens, folding tripod, and complete developing and printing outfit, as indicated in above cut.

Price complete, . . . . . \$7.50

### Manhattan Equipment.\*

THE CAMERA which forms a part of this Equipment is of mahogany, well finished and thoroughly practicable; it is adapted to



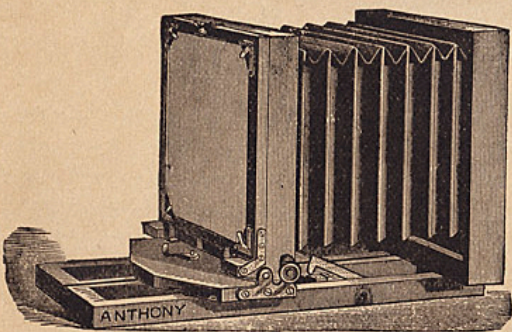
making of pictures either vertically or horizontally. The equipment comprises, beside the camera, one patent double zephyr dry plate holder, a single achromatic lens, tripod and carrying case.

With the 4 x 5 size, the triple jointed climax tripod is furnished, and with the other two sizes the improved folding tripod No. 1.

No.	Size of View.	Price.	Extra Zephyr Double Plate Holders, each.	Extra Eclipse Double Plate Holders, each.
1	4 x 5	\$9.00	\$1.20	\$2.00
1½	4¼ x 6½	10.00	1.25	2.20
2	5 x 8	10.00	1.35	2.20
3	5 x 8	16.50	1.35	2.20

Manhattan Equipment No. 3 is similar to No. 2 of the same name, and has in addition to the lens for 5 x 8 pictures, a pair of fine achromatic lenses for making either stereoscopic views on a 5 x 8 plate, or two 4 x 5 views on a plate 5 x 8 inches. The price, including the lenses, tripod and carrying case, is \$16.50. The lens for making the 5 x 8 picture may be omitted from this Equipment if desired, and the price for the outfit complete with the two 4 x 5 lenses will be \$13.50.

### Champion Equipment.



THE CAMERA included in this Equipment is of mahogany, with fine varnish finish, and is provided with folding bed (made rigid by the use of our patent clamps), rising front and swing back, and is adapted to either vertical or horizontal pictures. In

addition to the above camera, the equipment includes one patent

\*These Equipments are the same as those formerly known by numbers only, as above.

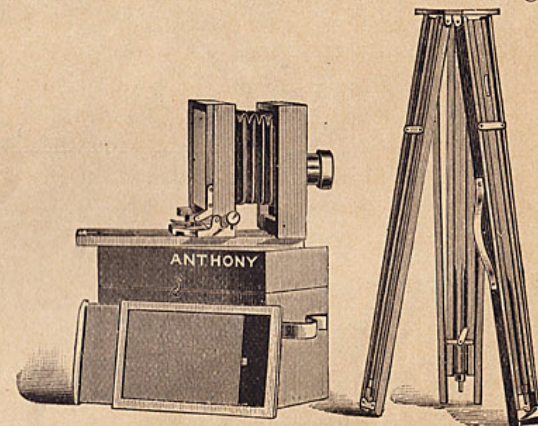
zephyr double dry plate holder, carrying case, fine single achromatic lens, and improved folding tripod.

Size of View.	Price.	Extra Double Zephyr Plate Holders, Each.	Extra Double Eclipse Plate Holders, Each.
4 x 5	\$10.00	\$1.20	\$2.00
4¼ x 6½	12.00	1.25	2.20
5 x 7	12.00	1.25	2.20
5 x 8	12.00	1.35	2.20
6½ x 8½	14.00	1.60	3.30
8 x 10	20.00	1.85	4.30

### O. N. A. Equipment.

THE CAMERA, which forms a part of this Equipment, is of highly polished mahogany, the metal work having the draw file finish like that on the finest mathematical instruments and being lacquered to prevent tarnishing. It is provided with a bed which folds for convenience in packing and has single swing and rising front.

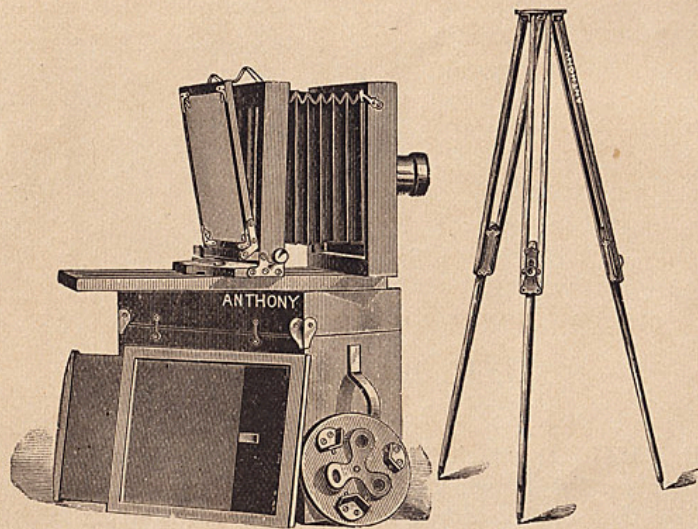
This camera can be used either vertically or horizontally. The outfit includes, beside the camera, a fine single achromatic lens, a patent zephyr double dry plate holder, an improved triple jointed climax tripod and carrying case, except in the case of the two sizes 6½ x 8½ and 8 x 10, which have our patent telescopic folding tripod, as stated below.



Equipment Number.	Size of View.	Price.	Extra Double Zephyr Plate Holders, each.	Extra Double Eclipse Plate Holders, each.
1 B	4 x 5	\$12.00	\$1.20	\$2.00
1½ B	4¼ x 6½	13.00	1.25	2.20
1¾ B	5 x 7	14.00	1.25	2.20
*2 B	5 x 8	15.00	1.35	2.20

\*This Equipment is also fitted with a shutter for instantaneous work, which is included in the price named.

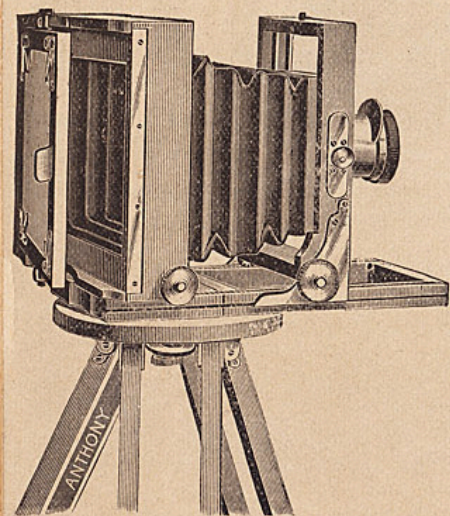
O. N. A. equipments, numbers 7 B and 8 B, are similar to those previously described, except that they are fitted with a patent *telescopic* folding tripod, as shown in the cut.



Equipment Number.	Size of View.	Price.	Extra Double Zephyr Plate Holders, each.	Extra Double Eclipse Plate Holders, each.
7 B	6½ x 8½	\$20.00	\$1.60	\$3.30
8 B	8 x 10	26.00	1.85	4.30

### Victor Equipment.

THE CAMERA forming a part of this equipment is of highly polished mahogany, and the metal work has the draw file finish, similar to that used on the best mathematical instruments. The camera has rising front, single swing and front focus; is fitted with the double rack and pinion movement and folding bed. It can be used either vertically or horizontally by means of a plate on the side and has also the patent spring actuated ground glass, which is always ready, but never in the way. The equipment includes,



beside the camera, a patent Eclipse double dry plate holder, fine single achromatic lens, Triplex tripod and canvas carrying case, which contains all the above named articles except the tripod legs.

Size of View.	Price.	Extra Zephyr Double Plate Holders, each.	Extra Eclipse Double Plate Holders, each.
4 x 5	\$16.00	\$1.20	\$2.00
4½ x 6½	17.00	1.25	2.20
5 x 7	18.00	1.25	2.20
5 x 8	20.00	1.35	2.20
6½ x 8½	24.00	1.60	3.30
8 x 10	31.50	1.85	4.30

### Anthony's Bicycle Equipment.

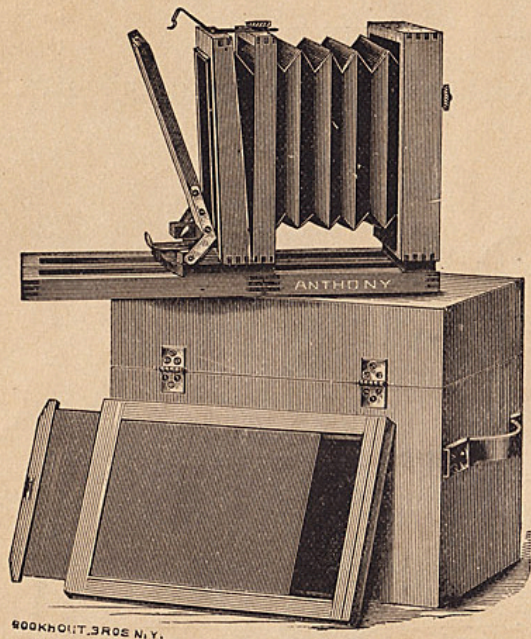


THE several parts which make up this very compact equipment are as follows: A handsome mahogany camera, suitable for views 3¼ x 4½, a fine single achromatic lens, patent double dry plate

holder and a sole leather carrying case with shoulder strap for convenience in carrying, and a clamp for attaching camera to bicycle when in use. The weight of this complete outfit is exactly 2 pounds.

Price complete, \$10. Extra double dry plate holders, each, . . . \$1.80  
Telescopic "y" shaped bicycle support, . . . . . 1.50

The N. P. A. Camera.



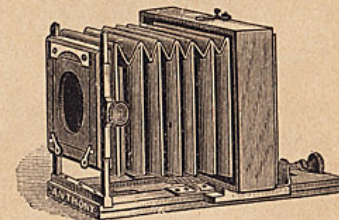
THIS is a highly polished mahogany camera with patent swing back rising front, folding bed, patent clamp hooks (to make the bed rigid), extra front and stereoscopic partition. The metal work has the draw file finish, similar to that on the finest mathematical instruments. By means of a plate on the side, this camera can be reversed on the tripod and used to make a vertical picture. This is the same camera as used in our O. N. A. Equipment. Prices, including camera as above, one patent double Zephyr dry plate holder and carrying case:

4 x 5 . . . . .	\$6.00
4½ x 6½ . . . . .	7.00
5 x 7 . . . . .	8.00
5 x 8 . . . . .	9.00
6½ x 8½ . . . . .	12.50
8 x 10 . . . . .	16.00

The Patent Bijou Camera.

THIS LITTLE CAMERA is one of the neatest of its kind ever made. When folded, it measures 5 x 5 x 3½ inches, and can readily be put in an ordinary hand-grip or may even be carried in the overcoat pocket. It weighs only 14½ ounces, and the holders are correspondingly light and compact.

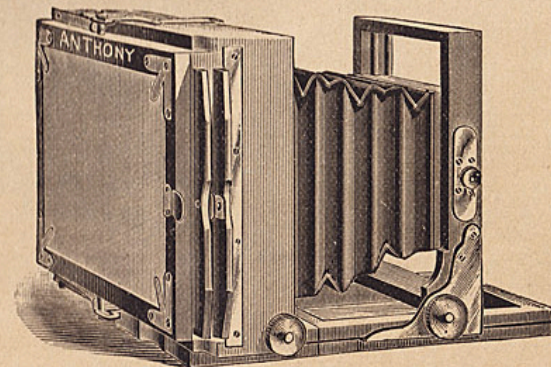
It has a sliding front, hinged ground glass, and folding bed, which is provided with a novel arrangement for fixing it in position, enabling the operator to adjust it in a few seconds. It is made of highly polished mahogany, with flexible bellows and brass mountings, making a remarkably elegant little instrument.



As the plate is the same size as those used with magic lanterns, slides may be made from them by contact printing in an ordinary printing frame. By using bromide paper in connection with a Cooper enlarging lantern, the pictures may be made as large as desired. For tourists, to whom weight and bulk are objections, this camera is of especial value.

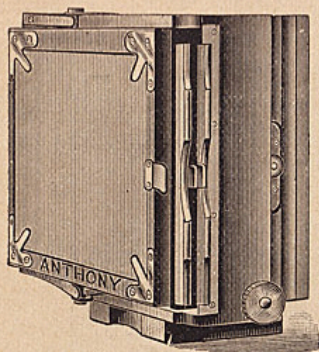
Price of camera, with one double holder, . . . . . \$ 9.00  
With swing back, . . . . . 12.00  
Price of patent improved double dry plate holders, 3½ x 4½ each, . . . 1.80

The Victor Camera.



THIS CAMERA is made of highly polished mahogany, and the metal work has the draw file finish, the same as that used on the finest mathematical instruments.



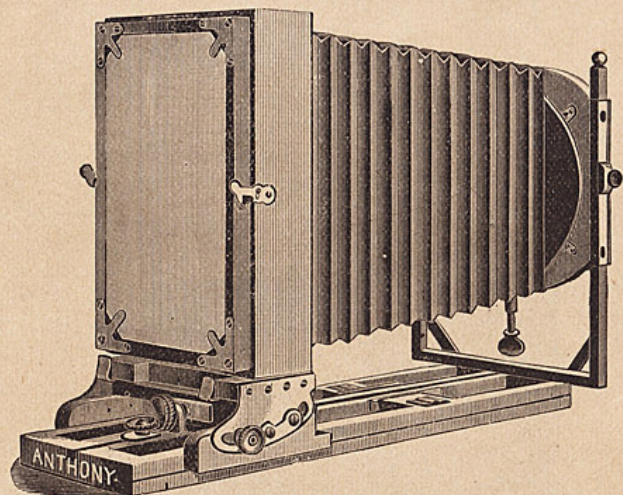


It is provided with rising front and single swing and is adapted to front focus, having the double rack and pinion movement.

The ground glass is fitted with the patent spring actuated movement which keeps it always attached to the camera without being in the way of the operator. The camera may be used for making pictures either vertically or horizontally by means of a plate on the side. The price includes camera, one Eclipse double dry plate holder and canvas carrying case.

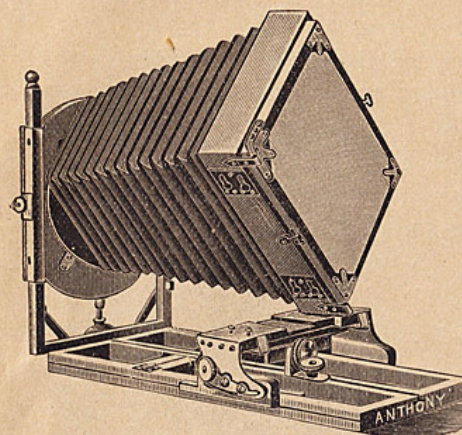
Size of View.	Price.	Extra Double Zephyr Holders, Each.	Extra Double Eclipse Holders, Each.
4 x 5	\$10.50	\$1.20	\$2.00
4½ x 6½	11.00	1.25	2.20
5 x 7	12.00	1.25	2.20
5 x 8	13.50	1.35	2.20
6½ x 8½	16.00	1.60	3.30
8 x 10	22.50	1.85	4.30

### Anthony's Patent Novelette View Cameras.



THESE CAMERAS are made in the best possible manner, and of first quality mahogany highly polished; the metal work having the draw file finish, the same as is used on the finest mathematical instruments. They have single and double swing backs, cone bellows and folding beds; are very light, compact and strong. Their peculiar construction admits of making the pictures either vertically or horizon-

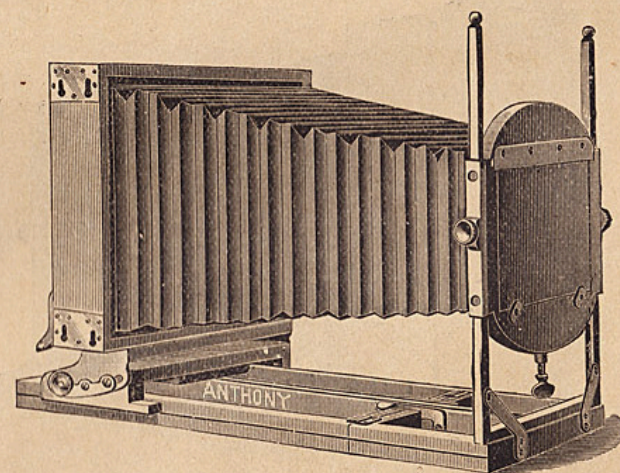
tally with equal ease, the change of position being effected very quickly. The rear part of the camera is separated from the bed by merely pushing it from left to right, the keyhole slots releasing the heads of the screws.



Showing Method of Reversing Camera.

The front end of the bellows being arranged so as to revolve in a light framework which runs on the two hollow upright brass rods, when the rear of the camera is separated from the bed, the entire bellows revolves at the same time with the rear. When this is turned on its side and replaced on the screws the camera is reversed. The whole operation requires but two seconds by the watch.

They are made with as long a bellows as possible, the 5 x 8 being about four inches longer than those of the ordinary kind. The ground glass is hinged to the camera.



Several new features have been availed of in the construction of this camera, to wit: In all sizes except 4x5 the bed may be instantly rendered rigid, *without the use of screws*, by means of a brace of patent hooks that hold the two sections of the bed with great firmness. In the case of the 4x5 size, the bed is fastened with a sliding plate.

The rabbit commonly found on the plate holder is dispensed with, and instead it is placed on the camera, thus saving the otherwise additional weight rendered necessary for twelve such rabbits when made on

the plate holders (two on each of the six usually carried), and the no inconsiderable item of three-fourths of an inch in bulk. The plate holders are made of hard wood, with metal carriers for the plates, and fitted with all the later improvements.

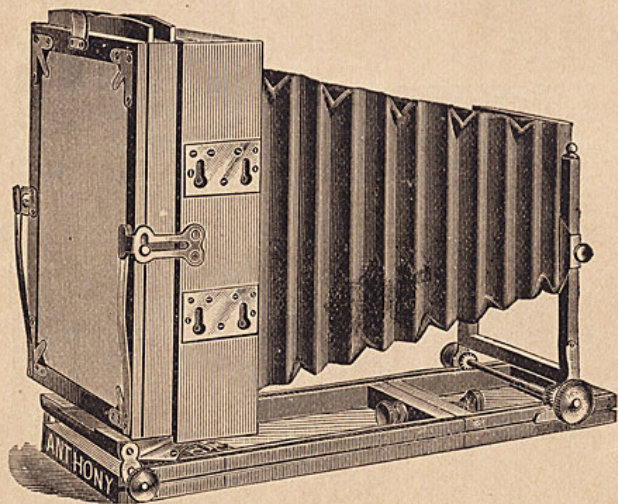
The Novelette occupies less space than any other view camera of the same capacity except our Fairy, and is packed in our telescopic brass bound Canvas Carrying Case.

When packed, the camera should always be put in a vertical position.

	Without Swing.	Single Swing.	Double Swing.
4 x 5, including one Novelette double dry plate holder, . . . . .	\$12.50	\$15.50	----
4½ x 6½, as above, . . . . .	----	20.00	----
5 x 7 or 5 x 8, as above, . . . . .	----	20.00	\$23.00
6½ x 8½, as above, . . . . .	----	25.00	28.00
8 x 10, " . . . . .	----	30.00	33.00
10 x 12, " . . . . .	----	42.00	45.00
11 x 14, " . . . . .	----	48.00	54.00

With the 4x5 size the Zephyr plate holders are used.

Front Focus Novelette Camera.

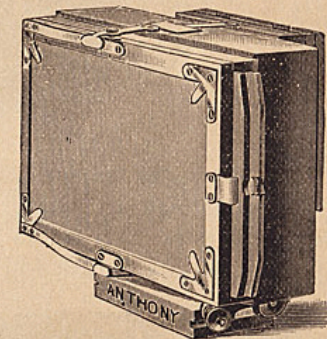
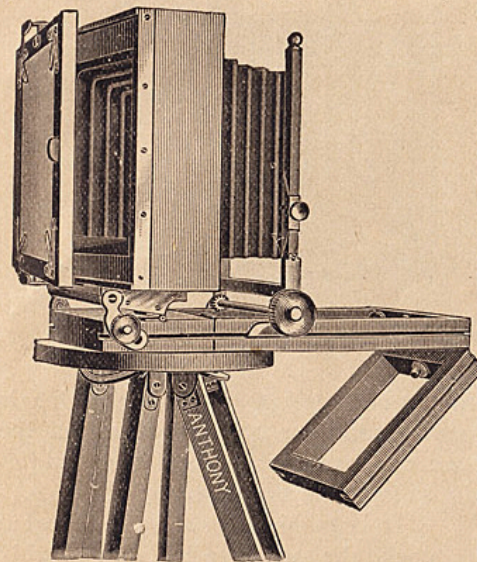


WITH the exception of the regular Novelette, Fairy and Phantom Cameras, this is the lightest and most compact reversible Camera extant. The body of the Camera is made of same shape as the holder, and is reversed more easily and quickly than any other in the market. It occupies only one-half the space necessary for other reversible Cameras for the same size plate, and is only two-thirds the weight.

It is made with the back rigid and the front moving forward

back by rack and pinion movement for focusing, thus giving the operator access to the ground glass without interference from the bed of the Camera.

It is of best quality mahogany, highly polished, has double rack and pinion the entire length of the bed, and when a lens of short focus is used the front section of the bed folds underneath, hooking to center section. It has rising front, single or double swing back, and our patent adjustable ground glass, which is

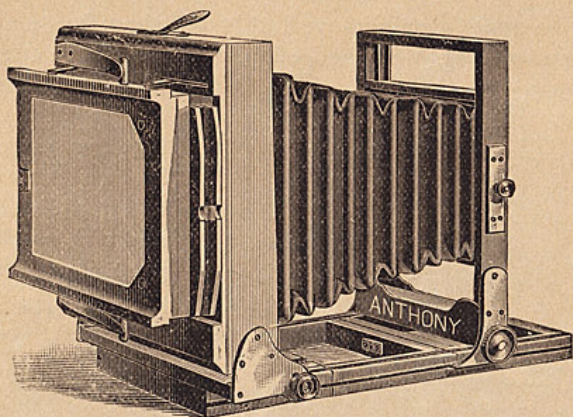


always just where it is wanted. The metal work has the straight line or draw file finish, same as used in the finest mathematical instruments. Each size admits the use of lenses of longest and shortest focus for the size plate to which the Camera is adapted. There are no loose pieces or sections, and in this respect also it differs from all other reversible Cameras of other makes, being complete in itself.

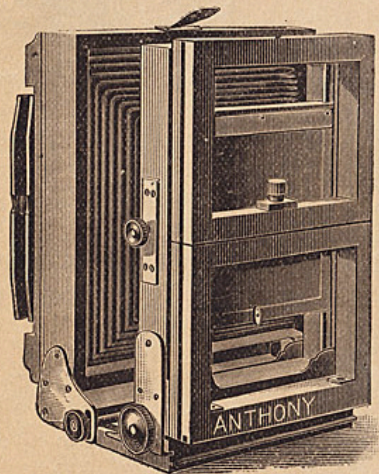
It is fitted with the Eclipse double dry plate holder, which is included in price of Camera quoted below. Also one of our telescopic brass bound Canvas Carrying Cases.

Size	Plain.	Single Swing.	Double Swing.	Extra Double Zephyr Holders, Each.	Extra Double Eclipse Holders, Each.
4 x 5	\$19.00	\$21.00	\$23.50	\$1.20	\$2.00
4½ x 6½	----	22.50	25.00	1.25	2.20
5 x 7	----	23.00	25.50	1.25	2.20
5 x 8	----	24.00	27.00	1.35	2.20
6½ x 8½	----	29.00	32.00	1.60	3.30
8 x 10	----	34.50	37.50	1.85	4.30
10 x 12	----	45.00	50.00	----	6.00
11 x 14	----	55.00	60.00	----	7.00
14 x 17	----	70.00	75.00	----	10.00

### Anthony's Reversible Back Camera.



THE accompanying cuts show a new design of camera, which is destined to please the most fastidious. It combines all the advantages of other reversible back cameras, with several new and important features which add greatly to its value for all round work.



It is manufactured from selected stock, the woodwork being highly polished and the metal work having the draw file finish, the same that is used on the finest mathematical instruments, and is lacquered to prevent tarnishing.

The camera is arranged for front focus and the back is reversible, admitting of a view being made either horizontally or vertically, without changing position of the box or altering the focus, and is so made that the slides may be drawn out, not only from top or sides of the camera, but from the bottom as well, the latter method

greatly diminishing the possibility of light entering the holder.

It is provided with our patent clamps for making rigid the bed when extended, by the use of which, great firmness and rigidity are obtained by the simple pressure of two buttons. This device entirely does away with the old turn screw and consumes no time.

It has also our patent swing back with which a very wide angle can be covered, by the simplest mechanical device. It is fitted with our patent zephyr holder, one of the lightest and best in the market, and has also our patent rabbets, for exclusion of light, attached to the back of the camera,

instead of being on the plate holder, the latter being thus made thinner and lighter, a saving of the weight and bulk of eleven rabbets resulting from this improvement, where six holders are in use. The bellows are made of the finest quality of rubber.

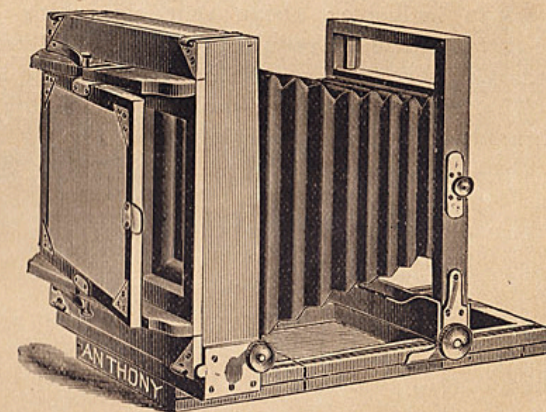
The back is fitted with the spring actuated ground glass, which is preferred by many to the ordinary hinged ground glass.

The backs of these cameras are made under the reversible back patents.

The prices herewith include one of our handsome carrying cases, and one Zephyr double dry plate holder.

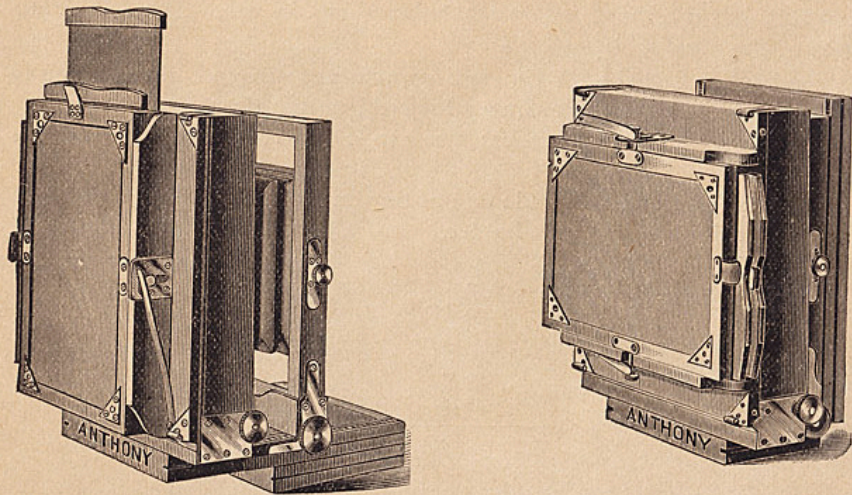
Size, 5 x 7, Single Swing	---\$28.00	Size, 6½ x 8½ Single Swing	---\$30.00
" 5 x 8, " "	30.00	" 8 x 10 " "	34.00

### Anthony's "Normandie" Reversible Back Camera.



THIS is the lightest, most compact and easily adjustable, reversible back camera in the market. It is of highly polished mahogany, the metal work having the draw file finish, like that used on the finest mathematical instruments. It is provided with our patent adjustable spring actuated ground glass, always in position and never in the way. The front portion of the bed is provided with hinges, so as to drop or to fold under the camera when in use with wide angle lenses of short focus. It is made rigid by use of our patent clamp hooks, and is provided with

double rack and pinion movement and front focus. The back of this camera is completely reversible, and the slides can be drawn from *bottom*



as well as from top or either side. This is an additional safeguard against the admission of light into the holder.

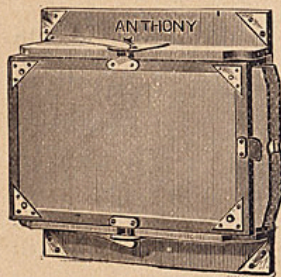
The Normandie is fitted with the Zephyr double dry plate holder up to 8 x 10 inclusive; above that size, with the Eclipse holder. Where extra holders are required, either the Eclipse or Zephyr may be ordered. This camera can be had with either the single or double swing. The price below quoted includes one double holder, and our telescopic brass bound Canvas Carrying Case.

Size.	Single Swing.	Double Swing.	Extra Double Zephyr Holders, Each, to 8-10.	Extra Double Eclipse Holders, Each.
4 x 5	\$20.00	\$22.50	\$1.20	\$2.00
4½ x 6½	22.50	26.00	1.25	2.20
5 x 7	25.00	28.50	1.25	2.20
5 x 8	27.50	31.00	1.35	2.20
6½ x 8½	30.00	33.75	1.60	3.30
8 x 10	35.00	39.00	1.85	4.30
10 x 12	45.00	50.00	----	6.00
11 x 14	55.00	60.00	----	7.00
14 x 17	70.00	75.00	----	10.00

**Extra Reversible Backs,**

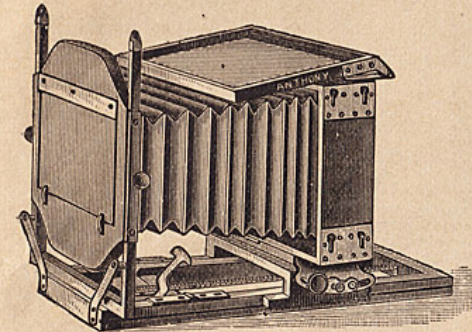
With "Zephyr" Holder, are made in the following sizes, to fit Cameras of larger size than plate used:

For Plates.	To fit Camera.	Price.	For Plates.	To fit Camera.	Price.
6½ x 8½	8 x 10	\$7.50	5 x 8	6½ x 8½	\$6.25
5 x 8	8 x 10	6.75	5 x 7	6½ x 8½	6.00
5 x 7	8 x 10	6.50	4½ x 6½	6½ x 8½	6.00
4½ x 6½	8 x 10	6.50			



**The Fairy Camera.**

IT has long been our desire to place before the public a camera that would at once embrace these most necessary requirements—portability, compactness, and strength, combined with beauty and accuracy of working.



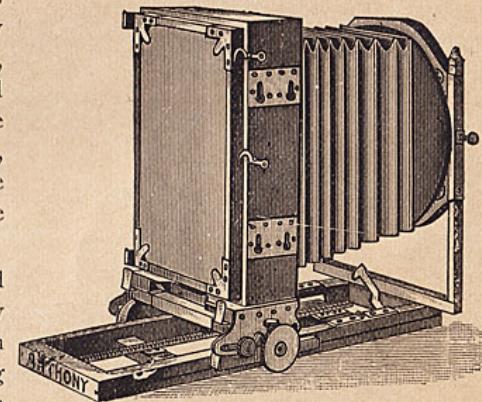
With Stereo Attachments, used Horizontally.

Until the introduction of the camera herein described, the nearest approach to this has been the Novelette Camera, which for a time seemed to be everything that could be desired. But urgent calls for something still better were frequently made, and we therefore devised the Fairy Camera, one of the most attractive and elegant pieces of apparatus of its kind ever offered. In presenting it, we invite attention to the following advantages it possesses over all others.

*Strength.*—It is put together as rigidly as wood and metal will admit of, and the result is a camera of great strength.

*Compactness.*—It occupies less space than any other view camera of the same capacity, except the Phantom and Novelette, and the plate holders are made of hardwood, with metal carriers for the plates, and fitted with all the later improvements.

*Portability.*—When closed for carrying, it occupies very little space and is packed in a neat sole leather carrying case, which is provided with a shoulder strap.



With Stereo Attachments, used Vertically.

Several new features have been availed of in the construction of this camera.

*First.*—The bed may be instantly rendered rigid, without the use of screws, by means of a brace of hooks that hold the two sections of the bed with great firmness.

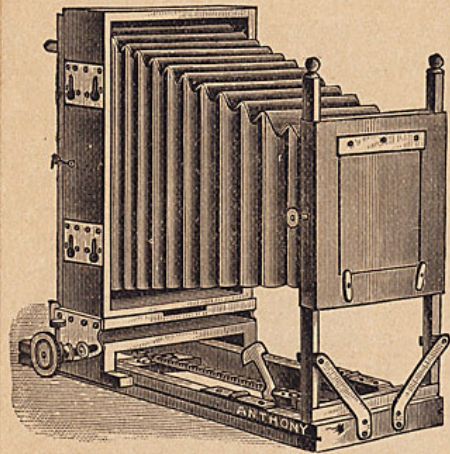
*Second.*—The rabbet commonly found on the plate holder is dispensed with, and is placed on the camera instead, thus saving the

additional weight and the no inconsiderable item of bulk, amounting to nearly an inch, where the customary six double holders are carried.

*Third.*—The camera is focused with a long, continuous metallic rack, cog wheel and pinion, the latter being firmly held in position by a binding screw.

The ground glass springs backward in its frame, like that in the regular Novelette Camera, and is held tightly in position by metallic spring corners. When windy this is a decided advantage.

The Fairy Camera is made in finely polished Circassian walnut, the metal work being nickel-plated, thus giving it a most elegant appearance.



Without Stereo Attachments.

At present it may be had in four sizes, as follows :

*Including one Double Dry Plate Holder.*

4½ x 6½, without stereo attachments,	. . . . .	\$40.00
5 x 8, " " " "	. . . . .	42.00
5 x 8, with " " " "	. . . . .	42.00
6½ x 8½, " " " "	. . . . .	45.00
8 x 10, " " " "	. . . . .	50.00

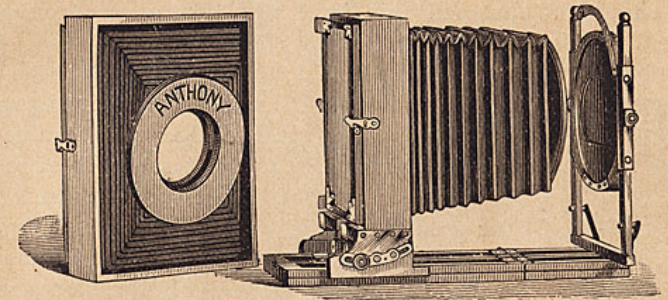
*Including six Double Dry Plate Holders.*

4½ x 6½, without stereo attachments,	. . . . .	\$50.00
5 x 8, " " " "	. . . . .	54.00
5 x 8, with " " " "	. . . . .	54.00
6½ x 8½, " " " "	. . . . .	62.00
8 x 10, " " " "	. . . . .	72.00

Naturally those without stereoscopic attachments are still lighter and a trifle more compact than those with, and may be preferred by persons who desire to make single portraits or views only. When six holders are purchased at once with the camera, the extra five holders are put in a leather case with sling, gratis.

Anthony's Patent Duplex Novelette Camera.

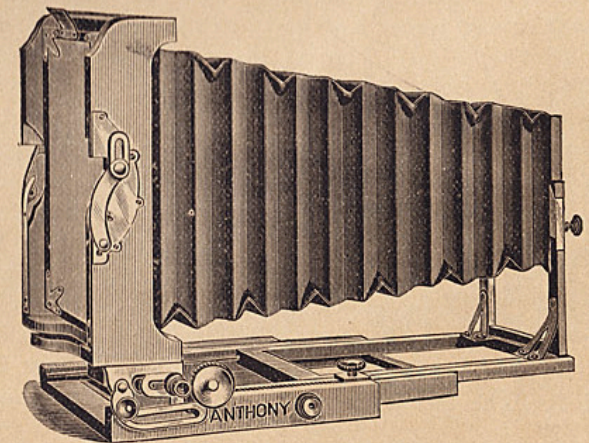
CONSISTING of an 8 x 10 bellows and ground glass, with a 5 x 8 camera, and an 11 x 14 bellows and ground glass with an 8 x 10 camera, making two cameras in one.



This most ingenious method converts a camera of smaller size into a larger one by the simple adjustment of the back and bellows which are made to fit the same bed and front board ; each part is provided with separate carrying case and double holder and makes when attached to the bed, a *perfect camera of either size* as desired.

Price complete for $\frac{8 \times 10}{5 \times 8}$ with one Patent Double Dry Plate Holder for each size, and carrying case for each,	. . . . .	\$36.00
Price complete for $\frac{11 \times 14}{8 \times 10}$ with one Patent Double Dry Plate Holder for each size, and carrying case for each,	. . . . .	\$65.00

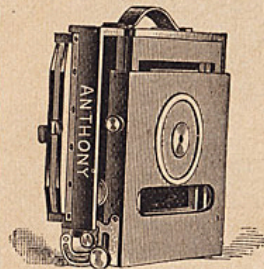
Anthony's Phantom Camera.



IN issuing this camera, every care has been taken to produce one that would be *compact, light, strong, and easily assembled*. It has no

complicated parts to get out of order, and the different parts will be found interchangeable.

The camera is reversed in same way as our Novelette and Fairy Camera, by the keyhole slots and screw heads. The front is raised or lowered on the metal standards, but when closing the camera, the top of the front should be fastened on a level with the top of the standards. The camera is always closed with the *plate horizontally*, and hence is always ready for viewing without reversing.

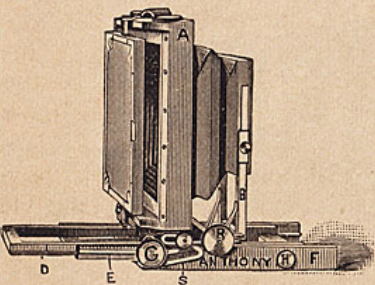


Camera when closed.

The ground glass is held in position by springs, which act on pins in the edge of the frame, these pins running in slots in plates on the edge of the body of the camera. To insert the holder, raise the ground glass frame as high as it will go, and draw it to the right, when the pins in the edges will rest upon the shoulders in the slots and keep it in position. Insert the holder as far as it will go, and either push the ground glass frame at same time, or afterwards, releasing the pins in its

edge from the shoulders, when the springs will act upon it, keeping the holder firmly in position. To withdraw the holder, raise it slightly to allow it to pass the metal light protecting edge, and it is easily removed. If raised high enough, it will catch the ground glass upon the shoulders, and hold it there ready to insert another holder. Where two or more views of the same object are desired, this will be found of great advantage. This construction never necessitates removal of the ground glass, nor is the latter ever in the way.

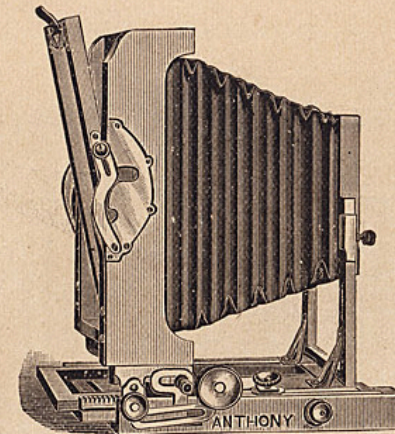
To open, and assemble it for operating, unfasten the hook that holds the bed to the top of the camera under the leather handle, and bring the bed at right angles with the body A. Then fasten set screw S (the smaller one of the two), under the body of camera. Then adjust the front in position on end of bed, by means of the two keyhole slots and screw heads. The inner section of the bed D is then placed to about where it is to be used, and fastened in position by set-screw. The adjustment of focus is obtained by the screw R, which works the rack and pinion, moving the second or middle section of camera bed, E. When this is done, the bed is rigidly secured by set-screw H in outer



section of bed, F. The swing back is operated by loosening the set-screw G.

For using lenses of very short focus, the inner section of the bed D is run to the rear as far as possible, and the middle section of the bed, E, racked to the rear, when it will admit of use of lenses of shorter foci,

without the least danger or possibility of the bed being brought into the view.

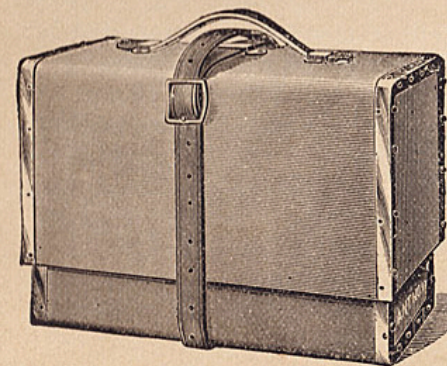


Camera arranged for short focus.

The price includes one patent Phantom double holder and new style telescopic case.

Size.	Longest Focus.	Price.
4½ x 6½, . . . . .	16 inches, . . . . .	\$28.00
5 x 7, . . . . .	18 " . . . . .	32.00
5 x 8, . . . . .	18 " . . . . .	34.00
6½ x 8½, . . . . .	20 " . . . . .	38.00
8 x 10, . . . . .	23 " . . . . .	40.00

**Anthony's Telescopic Brass Bound Carrying Cases.**



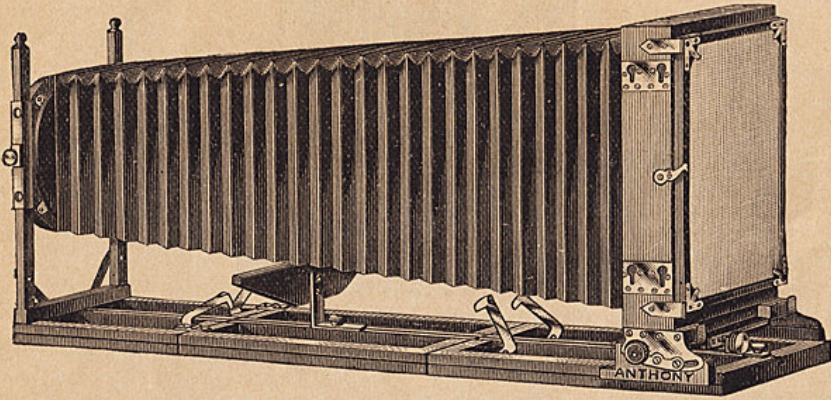
THESE carrying cases are, as indicated by the cut, extremely neat and tasteful in appearance, and are made of the best material and in the most thorough manner. We now supply these cases with all our Novelette, Phantom and Reversible Back Cameras, without extra charge.

Size.	Price.	Size.	Price.
4 x 5, . . . . .	\$1.60	6½ x 8½, . . . . .	\$2.00
4½ x 6½, . . . . .	1.75	8 x 10, . . . . .	3.00
5 x 7, . . . . .	1.75	10 x 12, . . . . .	3.50
5 x 8, . . . . .	1.75	11 x 14, . . . . .	4.00

Odd sizes made to order at an advance of 50 % on above prices.

Anthony's Long Bellows Novelette Camera,

For View, Portrait and Copying Work.

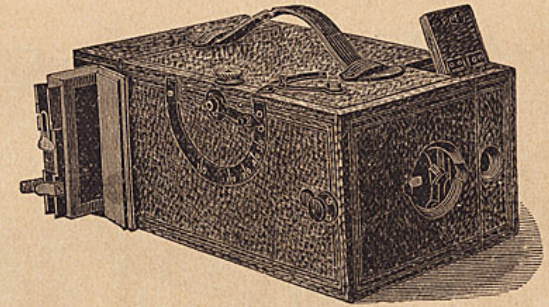


THIS instrument is a most useful camera for view and portrait photography and enlargements combined. It consists of a regular 8 x 10 Novelette Camera, made however with an extra long bellows and arranged with an extension to the bed which gives it a focal length of 32½ inches. As shown in the cut, the bellows is fitted with a movable support, which serves to hold it in position and prevent sagging when in use for enlargements.

The extra bed is held firmly in position by means of dowels and our patent clamp hooks, and may be attached or detached almost instantly. This camera is furnished with carrying case, and its entire weight is only 7 pounds. Price, including one of our new style double Novelette holders and carrying case, \$40.00.

Schmid's Patent Detective Camera.

(PATENTED JAN. 2, 1883.)



The Leather Covered Detective Camera.

THIS CAMERA is focused for objects at various measured distances, and the points are marked upon the index shown in the cut at the side of the box, the pointer of the index serving to act upon gear work to bring the camera in adjustment for any given distance.

After this the ground glass may be entirely dispensed with, as it is then only necessary to estimate the distance of the object to be photographed and move the focusing lever to the mark corresponding to that distance, when the camera will obviously be in focus.

The small lens in the upper left hand corner serves to throw the picture on a piece of ground glass on the top of the camera, thus showing the position of the image on the plate. When the picture appears in proper position on this ground glass, it is only necessary to touch the button on the right of the camera and the exposure of the plate is instantly made, its development being afterward accomplished in the ordinary manner.

The slide is then replaced in the plate holder, which, being reversed the shutter reset, and the other slide drawn out, everything is ready for the next shot.

Prices, complete, including camera, lens, shutter and one double dry plate holder, are as follows:

3½ x 4½, . . . . . \$55.00	5 x 8, . . . . . \$117.50
4 x 5, . . . . . 60.00	6½ x 8½, . . . . . 125.00
4½ x 6½, . . . . . 90.00	8 x 10, . . . . . 160.00
3½ x 4½ and 4 x 5, covered with leather, . . . . . \$2.50 extra	

Fitted with Dallmeyer Rapid Rectilinear Lens, prices are:

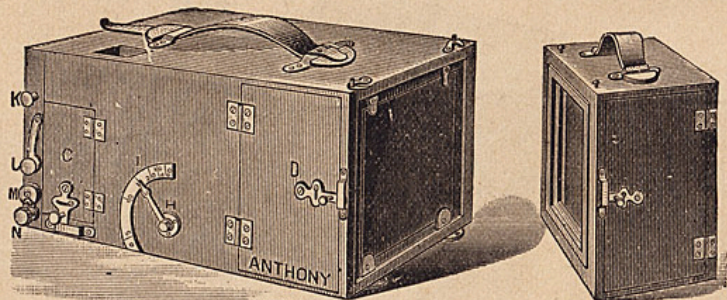
3½ x 4½, . . . . . \$77.00	5 x 8, . . . . . \$140.00
4 x 5, . . . . . 82.00	6½ x 8½, . . . . . 147.50
4½ x 6½, . . . . . 105.00	8 x 10, . . . . . 192.00

Sizes above 4 x 5 are made to order only.

Additional double dry plate holders, for 3½ x 4½ plates, each, . . . \$1.80
“ “ “ “ “ 4 x 5 “ “ . . . 1.80

### Anthony's Climax Detective Camera.

Patented Nov. 11, 1884. Sep. 14, 1886. March 22, 1887. March 29, 1887.



THE above cut shows one of our latest Detective Cameras, which is kept in stock in one size only, 4 x 5, larger sizes being made to order. It is so arranged that its working parts are all on the left side of the box, and is so constructed that the shutter may be set, released, and its speed regulated, from the outside, without having to open the box at all.

Lenses of varying focal length may be used and the diaphragms changed without removing the shutter. A removable rear compartment is also made for use with the camera, which is fitted to contain five double holders and which is adapted to take the place of the focusing cloth when the plate holders and rear partitions have been removed, an advantage not possessed by any other style of detective camera. This Camera may be carried and operated in our patent satchel, thus giving it the appearance of an ordinary hand bag.

	Instantaneous Landscape Lens.	R. R. Hemis- pherical Lens.	Dallmeyer R.R. Lens
Climax Detective Mahogany Camera, with 4 x 5 Dry Plate Holder, complete, . . . . .	A \$25.00	B \$41.00	C \$63.00
Or, if covered with Black Grained Leather and with Metal Work Oxidized Black, . . . . .	D 29.00	E 45.00	F 67.00
With Removable Rear Compartment of Mahogany, containing 5 extra Double Dry Plate Holders, . . G	40.00	H 56.00	I 78.00
Or, covered with Leather as above, . . . . .	K 45.00	L 61.00	M 83.00

Satchel Climax Detective Cameras will cost, in addition to above :

In Genuine Alligator, . . . . .	Extra, \$15.00
In Imitation Alligator, Grained Leather, . . . . .	" 10.00

### Anthony's Patent Satchel Detective Camera.

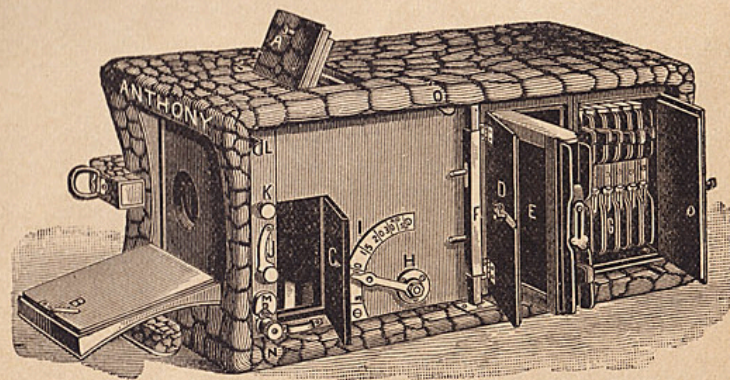
IN outward appearance, and to the ordinary observer, this latest modification of the Detective Camera looks exactly like an alligator hand-satchel that is carried by a shoulder-strap at the side of the pedestrian. Upon closer observation, one sees that it consists of an artfully-



concealed detective camera, in which all the various movements to secure a picture are situated upon the under side. For use, the camera is held so that the base of the satchel rests against the body of the operator. By means of a brass pull at the side the shutter is set. A plate in the regular holder is placed in position at the back of the camera, and the slide is drawn ready for exposure. The release of a short catch, exposes the front of the shutter ready for action,

and by raising a small leather-covered lid the little camera obscura, called the finder, on the (now) upper side of the camera, shows the position that the object will occupy on the plate. The slightest touch upon a small brass button releases the shutter, and the exposure is made. Replacing the slide in the plate holder, reversing the holder, and setting the shutter again, leaves the apparatus in readiness for another shot, when the plate holder slide is withdrawn as before.

By releasing a spring bolt on the under side of the case, the camera proper can be removed from its cover, and a tripod screw serves to attach the camera to a tripod for ordinary use.

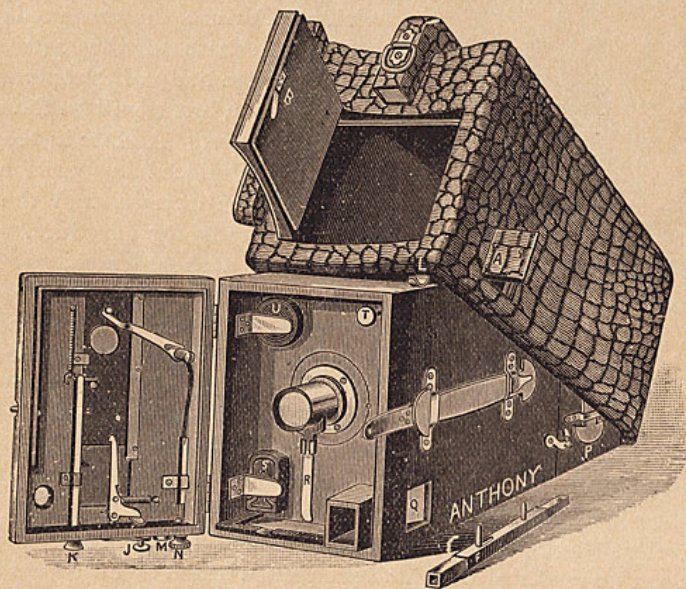


This last form of the detective camera allows the operator to carry with him twelve plates in the interior of the apparatus, and so carefully



packed away that no light can strike them. It is also furnished with an ingenious attachment by which the speed of the shutter can be regulated to suit the speed of the object, moving with greater or less velocity; while, by simply releasing a catch, time exposures can be made at the will of the operator. In fact the whole affair is an important achievement in ingenious, compact and light photographic apparatus.

These satchel detective cameras have been frequently operated with success where the use of others less deceptive has been prevented.



Camera showing the detachment of Satchel.

For Plate 4 x 5 inches.

	Instantaneous Landscape Lens.	Fitted with R. R. Hemispherical Lens.	Dallmeyer R. R. Lens.
In Imitation Alligator or Grained Leather, with one Patent Double Dry Plate Holder, . . . . .	N \$35.00	O \$51.00	P \$73.00
In Genuine Alligator, with one Patent Double Dry Plate Holder, . . . . .	R 40.00	S 56.00	T 78.00
In Imitation Alligator or Grained Leather, with Removable Rear Compartment containing five extra Patent Double Dry Plate Holders (six in all), . . . . .	U 50.00	V 66.00	W 88.00
In Genuine Alligator, with Removable Rear Compartment containing five extra Patent Double Dry Plate Holders (six in all), . . . . .	X 55.00	Y 71.00	Z 93.00

Larger sizes made to order.

### Lilliput Camera.



THIS is the handiest, lightest and most easily handled detective camera ever put upon the market. In outward appearance it resembles a small hand bag, being made of fine sole leather and fitted with a sling strap for convenience in carrying. It occupies a space only 4 x 4 x 6 inches, and notwithstanding its small bulk, carries six double holders, which may be filled with glass plates or films and which are emptied and refilled by the operator himself precisely as if in a regular camera.

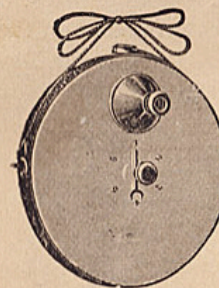
The lens covers an angle of about 60°, and is adjusted to universal focus, being therefore always in readiness for use. The camera is worked without taking from the case, and all mechanism is entirely concealed from view. The size of picture obtainable is 2½ inches square, and they may be either time or instantaneous exposures at will of the operator, the shutter having an adjustment for either the one or the other. Price, including ruby lamp and plates for 108 exposures, \$25.00.



### The Concealed Vest Camera.

(Patented.)

THIS MINUTE CAMERA is made to be suspended from the neck of the operator and worn *under* both coat and vest with the lens protruding through the buttonhole of the vest.



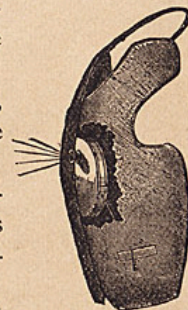
It is made of metal, nickel plated, and is provided with circular plate for six exposures without changing.

The camera is 6 inches in diameter, ¾ inch in thickness, and weighs only ½ lb. The lens is of universal focus and concealment almost perfect.

Fine nickel-plated camera, in handsome box, with 6 plates, for 36 pictures, for No. 1, or 24 large pictures for Camera No. 2.

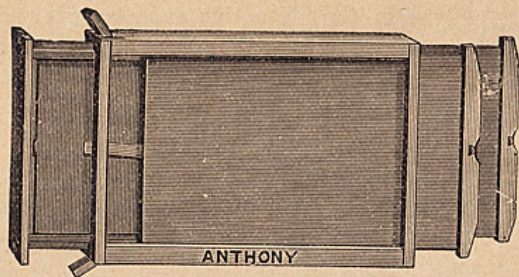
Nickel or Oxidized Camera, No. 1 (size of picture, 1¾ in.), . . . each, \$10.00  
 Magic Lantern Size Camera, No. 2 (size of picture, 2½ in.), . . . each, 15.00

Every camera guaranteed perfect.



Vest, showing Camera in position.

### Anthony's Patent Eclipse and Novelette Double Dry Plate Holders or Shields.



THESE are the most compact plate holders in the market, the rabbit commonly found on the plate holder being dispensed with and placed on the camera instead, thus saving the additional weight of twelve such rabbits when made on the plate holder (two on each of the six holders usually carried), and the item of three-fourths of an inch in bulk.

Their outside dimensions, exclusive of slide caps as given below, will be found to be smaller than any other double dry plate holders made.

The construction of our patent perfect double holders is such that several sizes of plates can be used without the aid of inside kits, for instance, in a 5 x 8 holder, any plate measuring five inches one way and not over eight inches the other, can be used, 4 x 5, 5 x 7, etc. This is very convenient where experiments regarding time are being made, and narrow strips being tried, in place of using an entire plate, or different sizes of plate with inside dry plate kits.

Thin wooden frames can be supplied for holding still smaller sizes, if desired, so that the amateur can experiment with plates smaller than the extreme limit of his holders, and at much less expense. (See Inside Dry Plate Kits.) They are also much more readily managed in the ruby light than any other style.

Outside Dimensions of Plate Holders.	For Plates.	Price.
$\frac{3}{4}$ x $5\frac{1}{4}$ x $7\frac{1}{2}$	$4\frac{1}{2}$ x $6\frac{1}{2}$	each, \$2.20
$\frac{3}{4}$ x 6 x 8	5 x 7	" 2.20
$\frac{3}{4}$ x 6 x 9	5 x 8	" 2.20
$\frac{3}{4}$ x $7\frac{1}{2}$ x 10	$6\frac{1}{2}$ x $8\frac{1}{2}$	" 3.30
$\frac{3}{4}$ x 9 x $11\frac{1}{2}$	8 x 10	" 4.30
1 x $11\frac{1}{2}$ x $13\frac{1}{2}$	10 x 12	" 6.00
1 x $12\frac{1}{2}$ x $15\frac{1}{2}$	11 x 14	" 7.00
$1\frac{1}{2}$ x 16 x 19	14 x 17	" 10.00

The Novelette and Eclipse Holders are of the same dimensions and style, except that the former have pins in the edges by which they are held fast to the camera by hooks, whereas the Eclipse Holders are used with cameras having springs in place of hooks.

### Fairy Plate Holders.

These are the same style plate holders as the Novelette but are fitted with hard rubber slides.

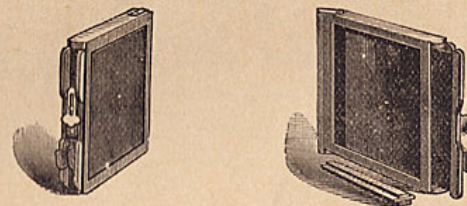
$4\frac{1}{4}$ x $6\frac{1}{2}$	each,	.	.	.	.	.	.	.	.	.	.	.	.	.	.	.	.	.	.	\$2.40
5 x 8	"	.	.	.	.	.	.	.	.	.	.	.	.	.	.	.	.	.	.	2.50
$6\frac{1}{2}$ x $8\frac{1}{2}$	"	.	.	.	.	.	.	.	.	.	.	.	.	.	.	.	.	.	.	3.70
8 x 10	"	.	.	.	.	.	.	.	.	.	.	.	.	.	.	.	.	.	.	4.80

### Lilliput Double Holders.

These are the same style holders as the Zephyr but are fitted with hard rubber slides.

$2\frac{1}{2}$ x $2\frac{1}{2}$	each,	.	.	.	.	.	.	.	.	.	.	.	.	.	.	.	.	.	.	\$1.10
---------------------------------	-------	---	---	---	---	---	---	---	---	---	---	---	---	---	---	---	---	---	---	--------

### Anthony's Patent Detective Double Dry Plate Holders.

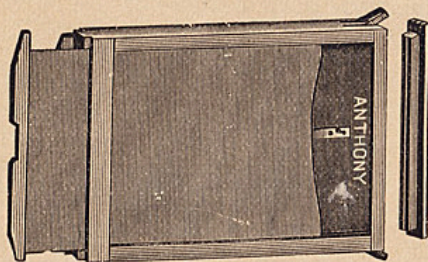


THESE are unquestionably the lightest and most convenient holders of their size in the market. The plates are placed in and removed from the holder at one of the ends, which is opened by pressing aside the metal band that secures the wooden cover. (See right hand cut.) These holders have hard rubber slides, and are provided with an ingenious device for holding slides in place and preventing their being accidentally drawn out when the holder contains plates.

These holders are used with our Detective, 4 x 5 Novelette, Bicycle and Bijou Cameras. They are also supplied with our Manhattan No. 1 and O. N. A. No. 1 B equipments. They are made in the following sizes only:

$3\frac{1}{2}$ x $4\frac{1}{2}$	each,	.	.	.	\$1.80		4 x 5	each,	.	.	.	\$1.80
---------------------------------	-------	---	---	---	--------	--	-------	-------	---	---	---	--------

Anthony's Patent Zephyr Double Dry Plate Holders.



ARE similar to the Detective Holders, but with paper slide. They can be used with any of our Amateur Outfits, and when fitted with pins at the sides, can be attached to our Novelette Camera.

4 x 5, . . . . .	\$1.20	5 x 8, . . . . .	\$1.35
4½ x 6½, . . . . .	1.25	6½ x 8½, . . . . .	1.60
5 x 7, . . . . .	1.25	8 x 10, . . . . .	1.85

Phantom Holders.

Are the same as Zephyr Holders, but with hard rubber slides.

4½ x 6½, each, . . . . .	\$1.80	5 x 8, each, . . . . .	\$2.00
5 x 7, " . . . . .	1.90	6½ x 8½, " . . . . .	2.60
8 x 10, each, . . . . .	\$3.00		

Film Holders.

THESE HOLDERS are for use with our Climax Negative Films and for compactness, lightness and practicability are unequaled. They are made in the same style as our Patent Novelette Holders for glass plates; but, being adapted to the use of the Climax Films, are consequently very much lighter than they could be made to carry a heavier plate.

4 x 5, each, . . . . .	\$2.00
4½ x 6½, " . . . . .	2.20
5 x 8, " . . . . .	2.20
6½ x 8½, " . . . . .	3.30
8 x 10, " . . . . .	4.30
10 x 12, " . . . . .	6.00
11 x 14, " . . . . .	7.00

Anthony's Patent Metal Film Kits.



THESE KITS are, as their name implies, made of metal, and are provided with a lip on each of two sides under which the film is slipped; they are light and easier of handling than any other kit in the market. They are made in the following sizes.

2½ x 2½, each, . . . . .	\$0.05
3½ x 4½, " . . . . .	.05
4 x 5, " . . . . .	.06
4½ x 6½, " . . . . .	.09
5 x 7, " . . . . .	.11
5 x 8, " . . . . .	.13
6½ x 8½, " . . . . .	.15
8 x 10, " . . . . .	.18

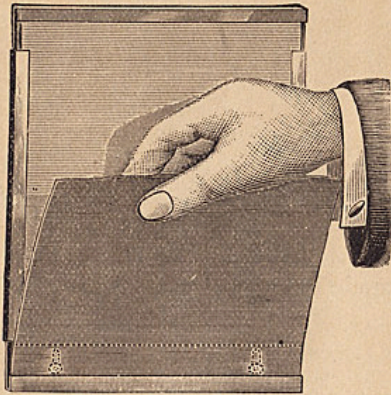
Barnett's Film Carriers.

THE introduction of Films has called for a medium or carrier to handle them. To enable the photographer to use Films in holders now on the market, Barnett's Film Carrier provides the means of handling this new negative producer as flat as glass. The Film is held at each end.

Sizes.	Price per Doz.
3½ x 4½, . . . . .	\$1.30
4 x 5, . . . . .	1.40
4½ x 5½, . . . . .	1.40
4½ x 6½, . . . . .	1.60
5 x 7, . . . . .	2.00
5 x 8, . . . . .	2.00
6½ x 8½, . . . . .	2.25
8 x 10, . . . . .	2.50

Other sizes made to order at special prices.

Barnett's Patent Universal Film Carrier.



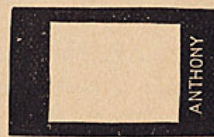
THE Universal Film Carrier will carry Films perfectly flat; fit any holder now made; and by means of a movable end, easily adjust any unevenness of edge, and is perfect for the use intended.

DIRECTIONS FOR FILLING THE UNIVERSAL CARRIER.

- First.—Slide the Films into grooves on side of carrier to within a short distance of end.
- Second.—Place a piece of paper over end of plate into brass groove, when the Film can be readily pushed in place.
- Third.—Extend the other end of carrier by pulling out the slide. Use same means as in adjusting at other end, when the slide can be closed. There is no necessity of the fingers touching the Film in placing in carrier.

Sizes.	Price per Doz.	Sizes.	Price per Doz.
3½ x 4½, . . . .	\$2.00	5 x 7, . . . .	\$2.75
4 x 5, . . . .	2.00	5 x 8, . . . .	2.75
4½ x 5½, . . . .	2.25	6½ x 8½, . . . .	3.25
4½ x 6½, . . . .	2.50	8 x 10, . . . .	4.00

Inside Dry Plate Kits.



THIN WOODEN FRAMES to hold small sized plates, fitting in any ordinary plate holder, thus enabling the amateur who has a large camera, to use small plates as well as large ones.

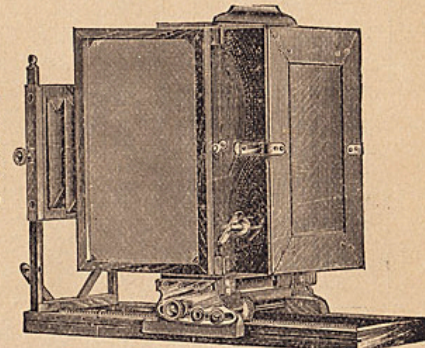
To fit Holders.	Each.	To fit Holders.	Each.
4 x 5—3½ x 4½, . . . .	\$0.25	8 x 10—4½ x 6½, 5 x 7, 5 x 8, 6½ x 8½, . . . .	\$0.35
5 x 8—3½ x 4½, 4 x 5, 4½ x 6½, . . . .	30	10 x 12—8 x 10, . . . .	55
6½ x 8½—4 x 5, 5 x 8, 4½ x 6½, 5 x 7, . . . .	30	11 x 14—8 x 10, 10 x 12, . . . .	60
		14 x 17—11 x 14, . . . .	75

Eastman's Roll Holders.

FIRST MODEL, with audible indicator and detachable key.

4 x 5, . . . .	\$10.00
*4½ x 7½, . . . .	12.50
5 x 8, . . . .	12.50
6½ x 8½, . . . .	16.00
8 x 10, . . . .	20.00

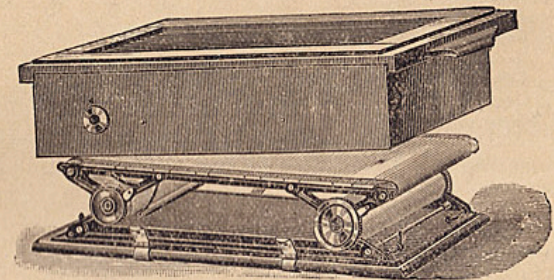
HOLDERS of other sizes to order.  
Fitting holder to cameras extra.



Showing Roll Holder fitted to Fairy Camera.

Roll Holders.

NEW MODEL, with both audible and visible indicators and non-detachable key.



3½ x 4½, . . . .	\$10.00	5 x 8, . . . .	\$12.50
4 x 5, . . . .	10.00	6½ x 8½, . . . .	16.00
4½ x 7½, . . . .	12.50	8 x 10, . . . .	20.00

Roll Holders. (Extra Parts.)

Extra Keys, each, . . . . 35 cts. | Extra Reels, each, . . . . 75 cts.

All parts of roll holders are made interchangeable, and any part can be furnished on application.

\* This size is made for 5x8 Fairy and Novelette cameras, which are smaller than any other regular 5x8 camera.



### Carbutt's Flexible Negative Films.

For Portraits, Landscapes, Interiors and Instantaneous Views.

NO extra processes are necessary. But Films are exposed, developed, fixed, washed, dried, and printed from, the same as Dry Plates; and being but  $\frac{1}{100}$  of an inch in thickness, can be printed from either side.

These Flexible Films are not made on sheet gelatine, or of paper made translucent, but on a transparent material perfectly impervious to water, unbreakable, and with a fine matt surface that renders them especially desirable for Interior Views and Landscapes, as halation is thereby greatly reduced.

They can be used in regular plate-holders for Studio or Landscape work, or in the special film-holders now supplied by the several manufacturers of photographic apparatus.

Price per Dozen. Coated with our "Special," "Eclipse" and "B" Landscape Emulsions.

3 $\frac{1}{4}$ x 4 $\frac{1}{2}$	. . . . . \$0.65	5 x 7	. . . . . \$1.65
4 x 5	. . . . . .95	5 $\frac{1}{2}$ x 7	. . . . . 1.75
4 $\frac{1}{4}$ x 5 $\frac{1}{2}$	. . . . . 1.12	5 x 8	. . . . . 1.80
4 $\frac{1}{4}$ x 6 $\frac{1}{2}$	. . . . . 1.30	6 $\frac{1}{2}$ x 8 $\frac{1}{2}$	. . . . . 2.50
4 $\frac{3}{4}$ x 6 $\frac{1}{2}$	. . . . . 1.40	8 x 10	. . . . . 3.60

They can be sent by mail without fear of breakage. When ordering from your dealer, add 5 per cent. to cost of films to cover postage.

### Anthony's Negative Paper.

OUR PATENT ROLL, for using in any roll-holder. In lengths of 24 exposures.

4 in., per roll,	. . . . . \$1.00	5 in., per roll, for $\frac{5}{8}$ and $\frac{5}{16}$ ,	. . . . . \$2.00
4 $\frac{1}{2}$ " " "	. . . . . 1.80	6 $\frac{1}{2}$ " " "	. . . . . 2.70
8 in., per roll,	. . . . . \$4.00		

### Negative Paper. (Cut Sheets.)

3 $\frac{1}{4}$ x 4 $\frac{1}{2}$ , two dozen in box,	. . . . . \$0.65	6 $\frac{1}{2}$ x 8 $\frac{1}{2}$ , two dozen in box,	. . . . . \$2.45
4 x 5, " " "	. . . . . .90	8 x 10, " " "	. . . . . 3.50
4 x 7, " " "	. . . . . 1.55	10 x 12, one dozen " "	. . . . . 2.60
4 x 8, " " "	. . . . . 1.75	11 x 14, " " "	. . . . . 3.50

Packed flat. Other sizes in proportion.

### Vergara Films.

(Light, Tough, Flexible.)

NO stripping, can be printed from either side. Developed same as glass. Can be used in the ordinary carriers. Put up in packages of one dozen each.

3 $\frac{1}{4}$ x 4 $\frac{1}{2}$ , per package,	. . . . . \$0.90	5 x 8, per package,	. . . . . \$2.70
4 x 5, " "	. . . . . 1.40	6 $\frac{1}{2}$ x 8 $\frac{1}{2}$ , " "	. . . . . 3.80
4 $\frac{3}{4}$ x 6 $\frac{1}{2}$ , " "	. . . . . 2.00	8 x 10, " "	. . . . . 5.00

Anthony's patent film holders for using Vergara Films or Negative Paper in the ordinary dry plate holder.

3 $\frac{1}{4}$ x 4 $\frac{1}{2}$ , each,	. . . . . \$0.20	5 x 7, each,	. . . . . \$0.30
4 x 5, " "	. . . . . .25	5 x 8, " "	. . . . . .30
4 $\frac{1}{4}$ x 6 $\frac{1}{2}$ , " "	. . . . . .30	6 $\frac{1}{2}$ x 8 $\frac{1}{2}$ , " "	. . . . . .35
8 x 10, each,	. . . . . \$0.40		

### Anthony's New Transparency Dry Plates.

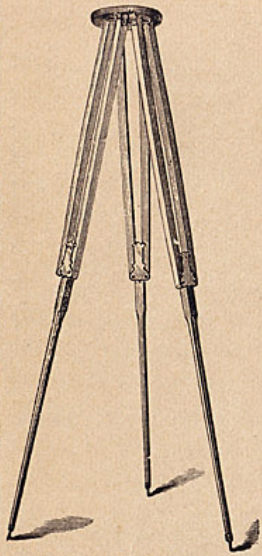
FOR LANTERN SLIDE, window transparencies, micro-enlargements, contact printing, duplicating negatives, and line work for photo-engraving. They work in half the time of the old collodion plates and require no intensifying. Send for circular and read what is said of them. Price per dozen :

3 $\frac{1}{4}$ x 4, thin crystal,	. . . . . \$0.55	6 $\frac{1}{2}$ x 8 $\frac{1}{2}$ ,	. . . . . \$1.65
3 $\frac{1}{4}$ x 4 $\frac{1}{2}$ ,	. . . . . .45	8 x 10,	. . . . . 2.40
4 x 5,	. . . . . .65	10 x 12,	. . . . . 3.80
4 $\frac{1}{4}$ x 5 $\frac{1}{2}$ ,	. . . . . .75	11 x 14,	. . . . . 5.00
4 $\frac{1}{4}$ x 6 $\frac{1}{2}$ ,	. . . . . .90	14 x 17,	. . . . . 9.00
4 $\frac{3}{4}$ x 6 $\frac{1}{2}$ ,	. . . . . 1.00	16 x 20,	. . . . . 12.50
5 x 7,	. . . . . 1.10	17 x 20,	. . . . . 13.00
5 $\frac{1}{2}$ x 7,	. . . . . 1.25	18 x 22,	. . . . . 15.50
5 x 8,	. . . . . 1.25	20 x 24,	. . . . . 18.50

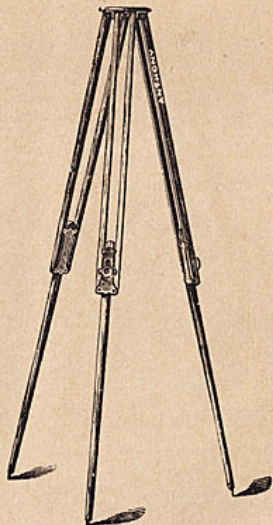
**Jointed Tripods.**

- No. 1, Anthony's Improved Folding Tripod, 6-in. circular top, \$2.25.
- No. 2, Anthony's Improved Folding Tripod, 8-in. circular top, \$2.25.
- No. 3, Jointed Tripod, folding iron top, adapted to large cameras, \$4.50.
- No. 4, Telescopic Legs, adapted to Stereoscopic and 8 x 10 sizes, \$3.50
- No. 5, Telescopic Legs, adapted to 11 x 14 size, \$3.75.
- No. 6, Large Tripod, with unjointed legs and 12-inch top sufficiently strong for the heaviest view cameras, \$6.00.

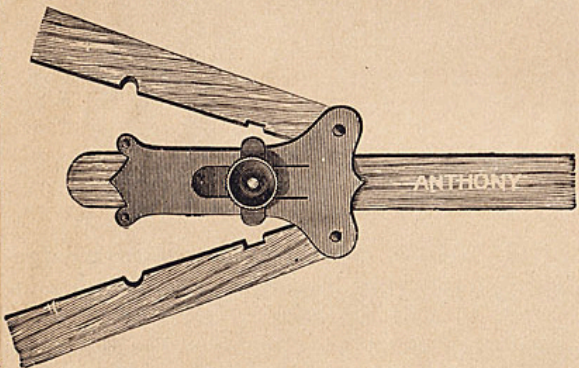
Nos. 1, 2, 4 and 5 have patent adjustment for preventing accidental displacement of legs from top.



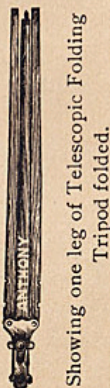
Anthony's Improved Nos. 1 and 2.



Anthony's Patent Telescopic Folding, Nos. 4 and 5.



Showing Telescopic Folding Joint of Nos. 4 and 5.

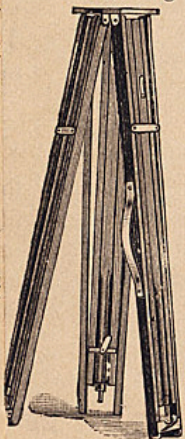


Showing one leg of Telescopic Folding Tripod folded.

**The Climax Tripod.**

As shown by the cut, this tripod folds in three joints, making it much more convenient to carry than the ordinary two jointed folding tripod. It resembles the Triplex Tripod in length, but is not telescopic. The legs may be left permanently in the top when folded, and the other ends being fastened by a strap, a leather handle on one of the legs forms a convenient method of carrying it.

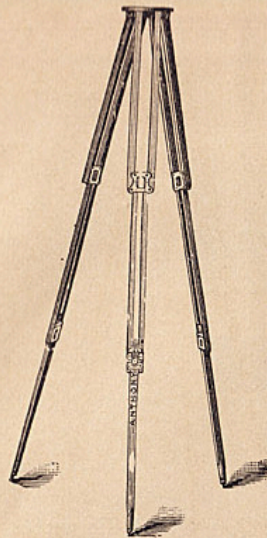
Price, . . . . . \$3 50



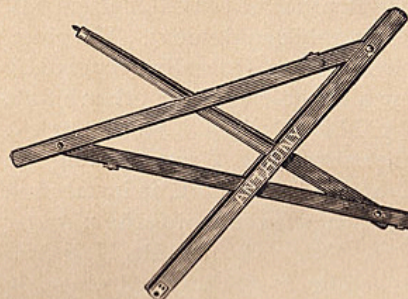
**Anthony's Patent Triplex Tripod.**

THIS is the finest finished in the market and perfectly rigid, combining both the folding and telescopic, besides which it occupies little space, and for transportation can be packed with clothing in a large grip sack. It is made of cherry throughout, and has the patent springs on under side of top, by which it is impossible for the legs to become unfastened accidentally. When the leg is fully extended, it is held automatically by a spring, saving necessity of using thumb screw for clamping same.

Price, . . . . . \$4.00



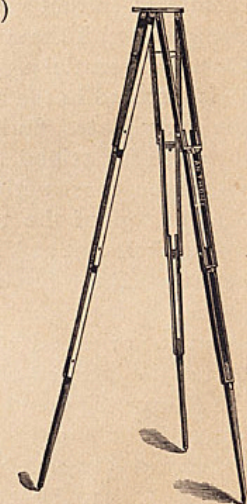
**The Fairy Tripod.**  
(Patented February 23d, 1886.)



Showing one leg of Fairy Tripod partly folded.



Showing one leg of Fairy Tripod folded.



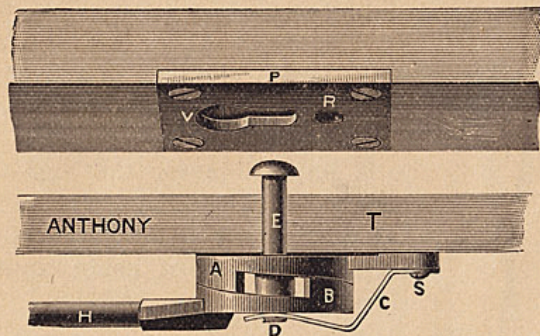
Showing Fairy Tripod set up ready for use.

OUR aim has long been to make all apparatus connected with outdoor photography as light and compact as is consistent with strength and durability. Until now the tripod has successfully resisted all efforts in that direction. But at last we can offer to our customers a tripod which is a marvel of lightness, compactness and rigidity, and which can be readily carried in an ordinary hand bag. When folded it is only 16 inches long and weighs but 1 lb. 15 oz.

Price, each, . . . . . \$5.00  
Fine sole leather carrying cases for legs of above tripod, with shoulder straps, each, . . . . . 2.50

Clamp Tripod Top.

(Patented.)



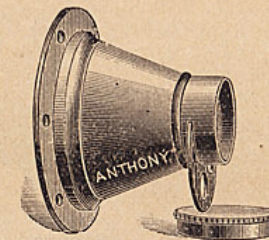
WE give a sectional view of our Clamp Tripod Top, which dispenses entirely with the tripod screw, and by means of which the camera is instantly clamped to the tripod. This attachment entirely does away with the annoying delays and difficulties of the old method and is a most essential part of a complete photographic equipment. The plate, P, is fastened in the bed of the camera, in the place generally occupied by the screw plate. In it are two holes, one a keyhole slot, the other a hole threaded for tripod screw in case it should be desired. The lower cut shows the construction of the clamping movement, T representing the wooden top of the tripod. The head of the plunger, E, is inserted in the keyhole slot at V, and the camera pushed forward until the plunger has reached the further end of the keyhole slot. The handle, H, is then pushed to the right. Attached to this handle is the inclined plane, B, into which the end of the plunger, E, is screwed. Turning the handle moves the inclined planes, which act like wedges, drawing the head of the plunger against the plate, P, holding the camera firmly in position. Should it be found necessary to lengthen or shorten the plunger, loosen the screw, S (which holds the entire attachment to the tripod), until the spring, C, can be slipped over and off from the plunger at D. To shorten the plunger unscrew it one or two turns, or more if necessary, replace the spring and set the screw, S, firmly in place. When firmly fixed to the tripod top, the camera cannot be moved from its position without moving the handle, H. The thickness of the plate, P, gradually decreases as it approaches the end of the narrow slot, giving positive security against the slipping of the camera when properly used.

We have these Clamp Tripod Tops to fit our Triplex, Telescopic, Climax and Folding Tripods.

Price of top and patent clamp and plate for camera bed, \$1.40.

For complete tripod, fitted with above and plate, add 40 cents to price of tripod.

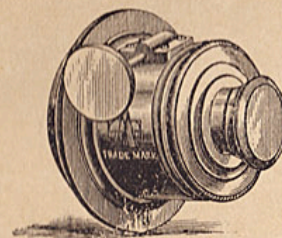
Anthony's Single Combination Lenses.



FOR ordinary landscape work these lenses give very brilliant effects, fully covering the plates specified. They are the best lenses in the market at the price. All have rotating diaphragms, so that the time of exposure may be varied to suit the subject.

No. 0, for 3½ x 4½ plates,	\$3.50	No. 2, for 6½ x 8½ plates,	\$4.50
No. 1, for 4 x 5 plates,	3.75	No. 3, for 8 x 10 plates,	7.00

E. A. View Lenses.

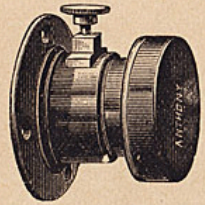


THESE are single combination lenses, used for landscape work only, but cover the plate very sharply. They have diaphragms in the front of the tube, and rack and pinion movement.

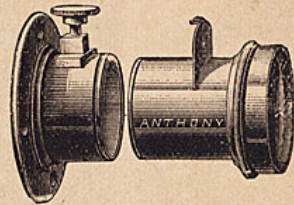
1-9 size, stereoscopic,	6½ inch focus, per pair,	\$9.60
1-6 " " " "	9 " " " "	10.00
1-4 " for 5 x 8 view,	10 " each	6.40
1-3 " " 7 x 9 " "	12 " " "	7.60
1-2 " " 10 x 12 " "	15 " " "	9.60
4-4 " " 14 x 17 " "	20 " " "	19.20



E. A. Rapid Lens (Hemispherical).



Lens ready for use.



Showing how the central stops or diaphragms are inserted.

HAS a double achromatic combination for making instantaneous views, portraits, groups, etc. The lens should be focused with the full opening.

Price, No. 1, for 4 x 5 pictures,	\$15.00
“ No. 2, for 5 x 8 “	25.00
“ No. 3, for 8 x 10 “	35.00

The No. 1 is supplied in rigid mounting.

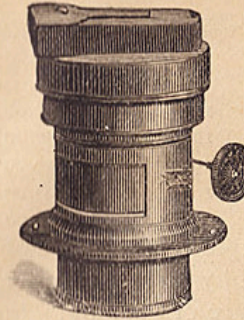
E. A. Wide Angle Lens.



THIS LENS being of short focus and of wide angle, and made on the rectilinear principle, is a useful one for architectural photography, and is not equaled at the price by any in market. Those who do not care to invest in the best—the Dallmeyer—will find this an excellent substitute.

No. 2, 4½ x 6½,	\$17.50	No. 4, 10 x 12,	\$25.00
No. 3, 7 x 9,	20.00	No. 5, 14 x 17,	35.00

E. A. Portrait Lenses. With Rack and Pinion.



THE attention of those who wish to procure a good portrait lens, but do not desire so expensive an instrument as that made by J. H. Dallmeyer, is respectfully invited to the following, which will be found good and uniform, as well as the best for the price. By removing the back combination, and screwing the front combination in its place, an excellent landscape lens is secured.

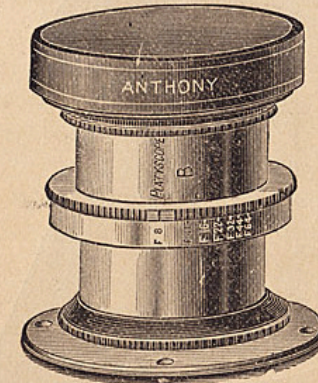
Back Focus.	Inches.	Each.
1-4 plain,	4½	\$7.50
1-4 central stop,	4½	8.75
1-3 “ “	5	14.50
1-2 “ “	6	17.50
4-4 “ “	10	35.50

E. A. Instantaneous Stereo. Lenses.

FOR instantaneous outdoor views, for indoor stereo. groups, C. de V., etc., etc. These are portrait combinations, and so constructed that the back lenses can be removed and the front ones screwed in their places, thus making a pair of single combination landscape lenses. They are in matched pairs, have Waterhouse diaphragms in leather cases, and rack and pinion movement.

Price, per pair,	\$19.20
------------------	---------

The Platyscope Lens



IS another of the Rectilinear series of Aplanatic lenses and while more moderate in price than the Dallmeyer or Aristoscope, gives most excellent results. Besides giving the equivalent focus and measure of plate they will cover with full opening, we also state the

circle of light, the marginal sharpness of which will depend on the diaphragm used. We guarantee every one.

No.	Full Opening.	Small Stop.	Circle.	Diameter.	Equiv. Focus.	Price.
A.	4 x 5 in.	5 x 7 in.	8½ in.	1 in.	6⅜ in.	\$22.00
B.	5 x 7 "	6 x 8 "	10¼ "	1¼ "	8½ "	30.00
C.	6 x 8 "	8 x 10 "	14 "	1⅝ "	11½ "	35.00
D.	7 x 9 "	10 x 12 "	15 "	1¾ "	12½ "	42.00
E.	8 x 10 "	11 x 14 "	19 "	2⅛ "	15½ "	50.00
F.	10 x 12 "	14 x 17 "	24 "	2⅝ "	19½ "	68.00
G.	12 x 15 "	17 x 20 "	32 "	3¼ "	24 "	100.00

The Platyscope lenses are now fitted with IRIS diaphragm in place of the central stops, the desired opening being obtained by merely turning the ring on body of tube, which shows exact measure of opening. In these there are no loose diaphragms to get lost.

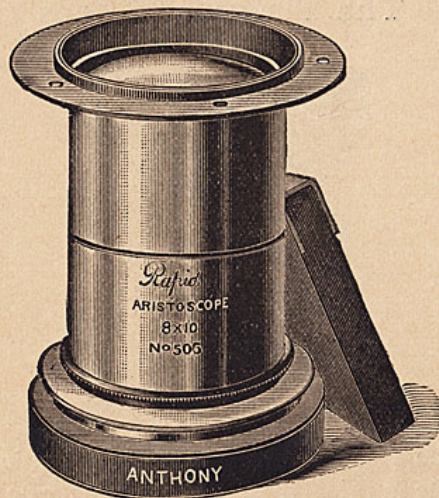
### Long Focus Platyscope.

WE have also some Platyscopes of longer foci, for use on distant objects, yachts, steamers, etc., where one desires them to be larger on the negative than when lenses of shorter foci are used. This makes possible the photographing of many things which would otherwise be impossible, as for instance, views which from their distance would be too small to be of use. This lens in fact is exactly the reverse of a very short focus wide angle lens, and is as valuable in its way for special work as is the wide angle in its peculiar field.

Each lens is supplied with full set of diaphragms in a leather case.

No.	Full Opening.	Small Stop.	Back Focus.	Price.
AA.	5 x 7 inches	6½ x 8½ inches	8 inches	\$22.00
BB.	6½ x 8½ "	8 x 10 "	13¼ "	30.00

### Rapid Aristoscope Lenses.

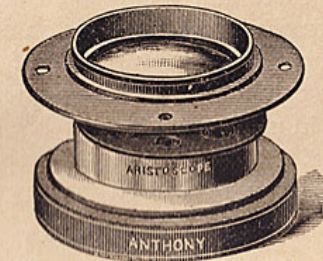


WE have introduced these lenses in order to supply the demand for a first-class instantaneous instrument, giving rectilinear results,

at a moderate price. They are unequalled at the price for instantaneous views, portraits, landscapes, architectural subjects, dimly lighted interiors, copying, etc., etc. We urge those who intend purchasing a lens for such work to try the Aristoscope before deciding. We guarantee them to be *unexcelled by any lens* except the Dallmeyer. Sizes, prices, etc., as follows:

No.	Size of View.	Size of Group.	Diam.	Equiv. Focus.	Price.
1	4 x 5	3 x 4¼	1 inch.	6 inches.	\$31.50
2	5 x 8	5 x 6½	1⅜ "	9 "	43.00
3	6½ x 8½	5 x 8	1½ "	11 "	48.50
4	8 x 10	6½ x 8½	1¾ "	14 "	62.50
5	10 x 12	8 x 10	2 "	16 "	78.00
6	12 x 15	11 x 14	2½ "	20 "	107.50
7	16 x 18	14 x 17	3 "	24 "	137.50
8	18 x 22	16 x 18	3½ "	30 "	187.50
9	22 x 25	18 x 22	4 "	34 "	225.00

### Wide Angle Aristoscope Lenses.



THIS LENS is fast becoming a favorite and where a really first-class instrument is required at a moderate price, cannot be excelled. It has great depth of focus, sharp and brilliant definition, and is rectilinear in its results. We would urge its trial and feel confident that if tested, its superiority will be made apparent.

No.	Size of View.	Diameter.	Back Focus.	Equiv. Focus.	Price.
1	5 x 6½	⅞ in.	3½ in.	4 in.	\$33.00
2	6½ x 8½	1¼ "	4⅝ "	5¼ "	40.00
3	10 x 12	1½ "	6¼ "	7 "	57.00
4	12 x 15	2 "	7½ "	8½ "	77.50
5	16 x 18	2½ "	11 "	13 "	103.50
6	20 x 22	3 "	14 "	15½ "	148.00
7	21 x 25	3¾ "	17 "	19 "	222.00

### Dallmeyer's Lenses.

THE extraordinary unanimity of opinion regarding the excellence of Mr. Dallmeyer's lenses both in Europe and America, is one of the most gratifying evidences of their great superiority. There is not a photographer of any note on either side of the Atlantic who is not the possessor of one or more—some can count them by the dozen—and the difference in cost between these and the inferior ones is very slight, when their great superiority is considered. None others approach them, and they have long been justly held to be the most indispensable of all the requisites of the art.

In the quality of the glass used; in the perfection of finish and adjustment; in softness, crispness and depth; in rapidity, delicacy and every quality a lens should possess, the Dallmeyer lenses are unrivaled. With or without diaphragms, they are better adapted to the particular work in hand than any others ever made, and every kind of photographic requirement is provided for. Before purchasing, carefully read the information contained in the catalogue, particularly that regarding the series of rapid rectilinear and the wide angle rectilinear.

The first requirement in making photographs of great merit, whether for portraiture, landscapes, architectural views, or copying, is a lens that in skilled hands promises the very best results. Those who excel uniformly select Dallmeyer lenses and pronounce them indispensable.

The PATENT PORTRAIT combinations have an adjustment of the back lens by which a diffusion of focus or depth of definition is obtained. This is not found in any other make. They also have a full set of the Waterhouse diaphragms in morocco cases.

Mr. Dallmeyer's line of lenses is the most complete of any in market, embracing everything that can be wanted for any possible operation.

### Dallmeyer's Wide-Angle Rectilinear Lenses.\*

(Patent.)

THESE LENSES embrace angles of pictures from 90 to 100 deg., and enable photographers to take views of buildings, interiors, etc., in confined situations, where lenses of longer focus cannot be used, and where absolute rectitude of lines is imperative.



The wide-angle rectilinear lens has the following advantages over existing non-distorting double combination lenses: It is entirely free from a central spot. It can be used with a larger stop, *i. e.*, it is quicker in action. It

\* This lens is also well adapted for stereoscopic views.

produces a more brilliant picture. The lenses of which it is composed are smaller and thinner, for a given sized plate, than those of other lenses intended for the same size of picture.

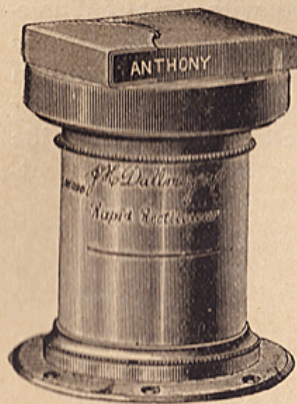
The lenses are mounted in rigid settings or tubes, and each is furnished with a rotating diaphragm plate. In the column below, the largest size of plate covered by each lens is recorded; and if microscopic definition up to the corners be required the smallest or smallest but one stop should be used.

No.	Largest Dimension of Plate.	Dia. Front Combination.	Back Focus.	Equivalent Focus.	Price.	Remarks.
1AA	4½ x 7¼	7⁄8	3½ in.	4 in.	\$37.00	No. 1A and No. 1 are made to screw into the same flange as the No. 1 Triple Achromatic.
1A	6½ x 8½	1¼	4⁵⁄8 "	5¼ "	45.00	
1	10 x 12	1½	6¼ "	7 "	61.50	
2	12 x 15	2	7½ "	8½ "	86.00	
3	16 x 18	2½	11 "	13 "	115.00	
4	20 x 22	3	14 "	15½ "	164.00	

### Dallmeyer's Rapid Rectilinear Lenses.

(Patent.)

THE RAPID RECTILINEAR LENS is emphatically "The Lens" for all kinds of outdoor photography. It works at an intensity of 1/3, and, although not so rapid as the D Lens, requiring nearly double the exposure, is superior to it for views because of its having only four, instead of six, reflecting surfaces. It is composed of two exactly symmetrical cemented combinations, and unlike most existing double combination cemented lenses, requiring small stops to cure the inherent excessive spherical aberration, the Rapid Rectilinear is aplanatic, *i. e.*, it works with the full opening. Hence its superiority for all kinds of quick outdoor pictures, groups, instantaneous effects, landscapes, architectural subjects, or for dimly-lighted interiors. For copying and enlarging this lens is unrivaled. With smaller stops each



lens covers the next larger, or even two sizes larger plates than those recorded, thus embracing angles of pictures from sixty to eighty degrees and this without any trace of flare or central spot. Many fine large portrait studies have been taken with this lens, and it is to be found in the possession of almost every photographer of eminence wherever the art is practiced. Either combination can be used singly as an ordinary landscape lens; focus, about twice that of the compound lens.

Each lens is supplied with a set of Waterhouse diaphragms. If required, any of the lenses marked below can be used, with smaller stops, for the next size larger view.

N. B.—It is recommended that all rapid rectilinear lenses above the 10 x 12 size should always be *focused* with a medium stop (No. 3), whether the picture is to be afterwards taken with a larger or smaller stop. Each lens is constructed to give the greatest possible "depth of focus" which involves the above conditions.

Size of View or Landscape.	Size of Group or Portrait.	Diameter.	Back Focus.	Equivalent Focus.	Price Rigid Set.
3½ x 4½ in.	3¼ x 3¼ in.	5/8 in.	3 5/8 in.	4 in.	\$31.00
4 x 5 "	3¼ x 4¼ "	1 "	5 1/2 "	6 "	37.00
5 x 6 "	4 x 5 "	1 1/4 "	7 1/2 "	8 1/4 "	45.00
6½ x 8½ "	5 x 6 "	1 1/2 "	10 1/4 "	11 "	57.50
8 x 10 "	6½ x 8½ "	1 3/4 "	12 1/4 "	13 "	74.00
10 x 12 "	8 x 10 "	2 "	15 "	16 "	90.00
12 x 15 "	10 x 12 "	2 1/2 "	18 "	19 1/2 "	123.00
16 x 18 "	12 x 15 "	3 "	23 "	24 3/4 "	164.00
20 x 22 "	16 x 18 "	3 3/4 "	28 "	30 1/2 "	222.00
21 x 25 "	20 x 22 "	4 "	31 "	33 1/2 "	262.00

4 x 5 furnished in matched pairs for stereo. work.

### Dallmeyer's Rapid Landscape Lens. (Long Focus.)

THIS is a single combination landscape lens specially constructed for obtaining large images in distant views, mountain scenery, balloon photography, etc. Each lens is supplied with a set of Waterhouse diaphragms, the apertures of the stops of these lenses being too large to admit of their arrangement in the form of a rotating diaphragm as supplied with the "wide angle" landscape series. It has a working intensity somewhat more than 1/2 (or about twice as quick as the wide angle landscape lens), and in this condition is entirely free from outstanding spherical aberration, *i. e.*, gives a perfectly defined image.

No.	Largest Dimensions of Plate. Inches.	Diameter.	Equiv. Focus. Inches.	Price.
1	4¾ x 6½	1.3	9	\$37.00
2	6½ x 8½	1.6	12	47.25
3	8 x 10	2.125	15	61.50
4	10 x 12	2.6	18	78.00
5	12 x 15	3.	22	94.50
6	16 x 18	3.5	25	115.00
7	20 x 22	4.25	30	144.00

### Dallmeyer's New Wide Angle Landscape Lens.

THIS is a single combination landscape lens, working at an intensity of 1/5, and is the best lens for landscapes, pure and simple, embracing large angles. Being a single combination, like the rapid landscape, it has but *two* reflecting surfaces and therefore produces a more brilliant picture than the wide-angle multiple lenses. It works with a proportionally large stop, *i. e.*, it is quicker in action and the illumination is more equally distributed from the center to the margin of the plate. Being composed of *three* lenses cemented together it is superior to the old Meniscus, composed of *two*, inasmuch as it produces less distortion, gives better marginal definition and is of much smaller size.

The Lenses are mounted in "Rigid" Tubes or Settings, with "Rotating" Stops.

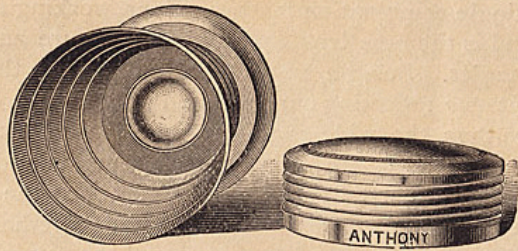
No.	Size of Plate.	Diameter.	Equivalent Focus.	Price.	Remarks.
1A	4 x 5	1 3/8	5 1/4	\$26.50	No. 1A and No. 1 are made to screw into the same flange as No. 1 Triple Achromatic Lens.
1	4½ x 7½	1 5/8	7	31.00	
2	6½ x 8½	1 3/4	8 1/2	37.00	
3	8 x 10	2 1/8	10	45.00	
4	10 x 12	2 1/2	12	57.50	
5	12 x 15	2 5/8	15	70.00	Nos. 2 and 3 screw into No. 2 Triple Achromatic flange.
6	16 x 18	3	18	86.00	
7	20 x 22	3 5/8	22	115.00	
8	21 x 25	4 1/4	25	155.00	

### Dallmeyer's New Rectilinear Landscape Lens.

THIS LENS works at an intensity, with the first stop, of 1/4, and is therefore somewhat slower in action than the rapid landscape, requiring an exposure of about 1/3 longer and, similarly to those lenses, may be used with a larger aperture than the first stop. It is particularly constructed for views, architectural subjects, copying, etc., where it is essential that straight lines should be accurately portrayed, and has been constructed specially to meet this long-felt want in the form of a single combination.

No.	Largest Dimensions of Plate.	Diameter.	Equivalent Focus.	Price.
1	5 x 6½ in.	1 1/2 in.	8 1/2 in.	\$39.00
2	6½ x 8½ "	1 3/4 "	11 1/2 "	49.50
3	8 x 10 "	2 "	13 1/2 "	65.50
4	10 x 12 "	2 1/4 "	16 1/2 "	84.00
5	12 x 15 "	2 3/8 "	20 "	102.50
6	16 x 18 "	3 "	25 "	131.00
7	20 x 22 "	3 1/2 "	32 "	172.00

Anthony's Combination Focusing Glass.



**H**ANDY and compact; serving the double purpose of a convenient drinking cup and a perfect focusing glass. A telescopic metallic cup, with a fine lens adjusted to the bottom, and packed in a neat metal case with screw cover. Every tourist photographer should have one.

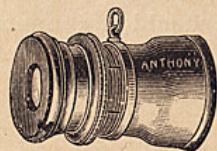
Price, . . . . . \$0.75

The New Duplex Focusing Glass.



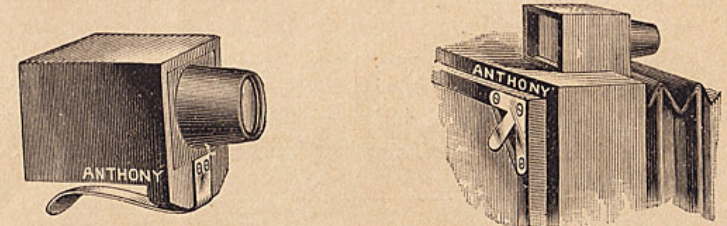
**C**HEAP and good. Price, \$1.25.

E. A. Compound Focusing Glass.



**F**OR fine work the E. A. Compound Focusing Glass is the best. It has a double compound lens. The price is \$2.50.

Anthony's Universal Finder.



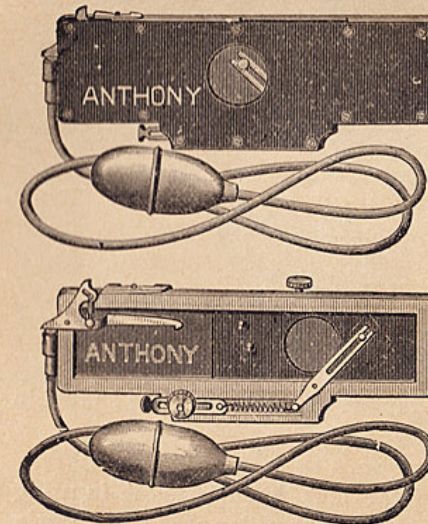
Showing method of fastening Finder to Camera. Showing Finder on Camera.

**T**HIS is a neat, compact article that can instantly be attached to any camera, and is of great value in composing a view. The object to be photographed being plainly visible and occupying the same relative position as on the ground glass or plate, it is indispensable for instantaneous views of moving objects. It corresponds in shape to the ordinary negative. The ground side of the glass can be marked at will to denote position desired when taking instantaneous views.

Price, . . . . . \$1.50

Anthony's Climax Shutter.

**T**HE shutter is attached to the lens tube by means of a metal collar, that is provided with a binding screw to hold it firmly in place. The shutter consists of a wooden casing, with facing of hard rubber, inside of which is a hard rubber slide, having an aperture corresponding in size to the aperture in the casing. This slide runs very easily in the grooves in wooden casing, and admits of a very rapid exposure when the shutter is set at full speed. The shutter is set by turning (*towards the right*) the milled screw at the left hand side of back. The speed can be regulated at will by drawing out or pushing in the brass pull, seen in the cut, at lower left hand side of shutter, a binding screw at the left serving to hold this pull at any desired distance, thus perfectly regulating the speed.



For time exposures the shutter should be set at slow speed, and the little brass piece on top of shutter at the left hand side (see cut), so adjusted as to allow the long arm of the trigger to reach down as far as it will go, thereby engaging with the lower pin on the slide at the moment

when the openings in slide and wooden casing coincide. The shutter is constructed so as to remain open until the pressure on the bulb is released, when it will close instantly.

Size.	Apert. of shutter.	Price.	Size.	Apert. of shutter.	Price.
No. 1.	1 inch,	\$4.00	No. 3.	1½ inch,	\$4.00
No. 2.	1¼ "	4.00	No. 4.	1¾ "	4.00

Collars furnished to fit all standard lenses without extra charge.

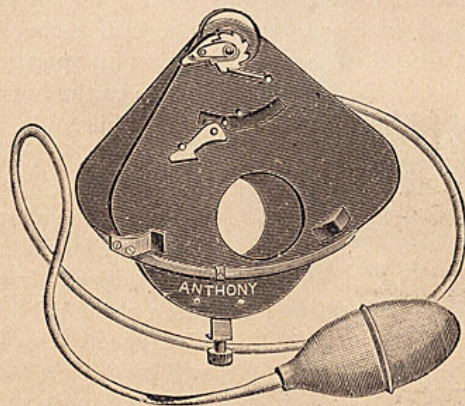
### Anthony's Instantaneous Drop.



CONSISTS of two thin pieces of wood, each having a hole cut in it of the same size, and so arranged that when one piece is placed upon the end of the tube (which fits into the circular opening), the other piece can be made to slide up and down directly against it. Prices for 4 x 5, \$1; 5 x 8 and 6½ x 8½, \$1.25. Larger sizes to order.

### The Nonpareil Shutter,

For Time or Instantaneous Exposure.



THE above cut represents the Nonpareil Shutter, possessing many advantages over those previously shown.

For instantaneous exposure, leave the metal catch down, as shown in cut.

For time exposure, turn the catch upward to the right.

The hood should be removed from the lens when possible in using this shutter, and care should be taken to have the collar of shutter closely fitted to lens to exclude light.

In order that it may fit any Lens this shutter is provided with a

movable collar, which, by the use of three turn screws, may be made either larger or smaller, so that it is adjustable to any ordinary lens.

By a very simple and ingenious device, this shutter is changed from long time exposure to the most rapid instantaneous working, all that is needed to effect the change being the adjustment of a metal catch.

It is provided with Pneumatic Release which works either time or instantaneous movement, and for the former is unlike most other shutters in use, inasmuch as the bulb must be compressed for opening the shutter and again compressed for closing it; a metal catch dropping and holding it open until released by the second pressure of bulb, whether for long or short time. The shutter responds instantly to the compression of the bulb, thus giving the operator *perfect control* of his exposure.

It is compact, light and simple in construction, easily worked and of fine appearance, and each shutter is neatly packed in a small mahogany case, which will readily fit into the pocket.

The price of this shutter, with bulb and rubber tube, is \$4.50.

The following are the sizes of the apertures which we keep in stock :

No.	Front opening of shutter.	Opening of adjustable collar.
No. 1,	1 inch,	1 to 1½ inches.
" 2,	1¼ "	1½ to 2 "
" 3,	1½ "	1½ to 2 ⅞ "
" 4,	1¾ "	1¾ to 2 ⅞ "

### Prosch's Duplex Shutter.

A Perfect Time and Instantaneous Shutter.

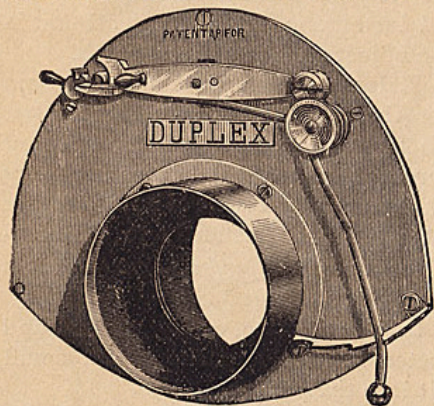
THIS SHUTTER is now so well known that an extended description here is hardly required. When shutter is received by purchaser, he transfers the glasses from his regular lens tube to correctly adapted tubes on the shutter, which are also arranged to receive regular diaphragms. Rotary diaphragms are added to shutter when ordered.

#### DUPLEX ENLARGED REVISED LIST.

Numbers,	.00	0	0A	1	1A	2	2A	3
Openings, in	⅛	⅜	1	1 ⅛	1 ⅜	1 ⅝	1 ⅞	1 ⅞
Prices,	\$11.50	12,	12.50,	13,	13.50,	14,	14.50,	16.

Rotary stops to shutters up to and including No. 1, \$1.50; to No. 2A, \$2. An additional pneumatic attachment may be added at same

extra prices as for rotary stops, by which silent time and very slow to quite rapid instantaneous exposures can be made without having to reset the shutter for each exposure.



Opening in shutter should be about the size of next to largest diaphragm. Shutters can be furnished complete for most standard lenses, but it is to customer's interest to forward his lens tube to ensure a perfect fit, which is returned to him intact, with complete shutter.

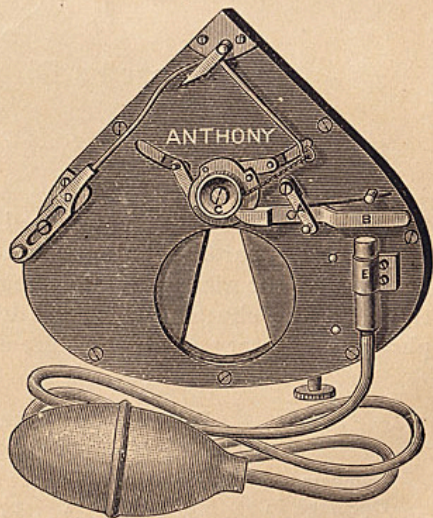
The Duplex can be operated, either time or instantaneous, as easily from a considerable distance as when close by.

### The "Hadden" Shutter. (Patented).

For Instantaneous or Time Exposures.

**T**HIS SHUTTER is made of metal, with hard rubber face and disks. The latter are propelled by levers connecting them with the revolving plate, this plate being actuated by means of a lever and cord. This shutter, though expensive, is one of the most perfect ever made.

*To operate the Shutter.*—For instantaneous work push the lever, A, to the right (as shown in the cut). Revolve the nut, C, until the aperture is full, when the focus can be obtained. Revolve it further until it catches, and pull out the slide, D, as far as it will go; then press the bulb and the operation is effected. For time exposures push in the slide, D, to slacken the speed, push the lever, A, to the left, press the bulb and release the pressure. The shutter will remain open until the bulb is again pressed, when it closes instantly.

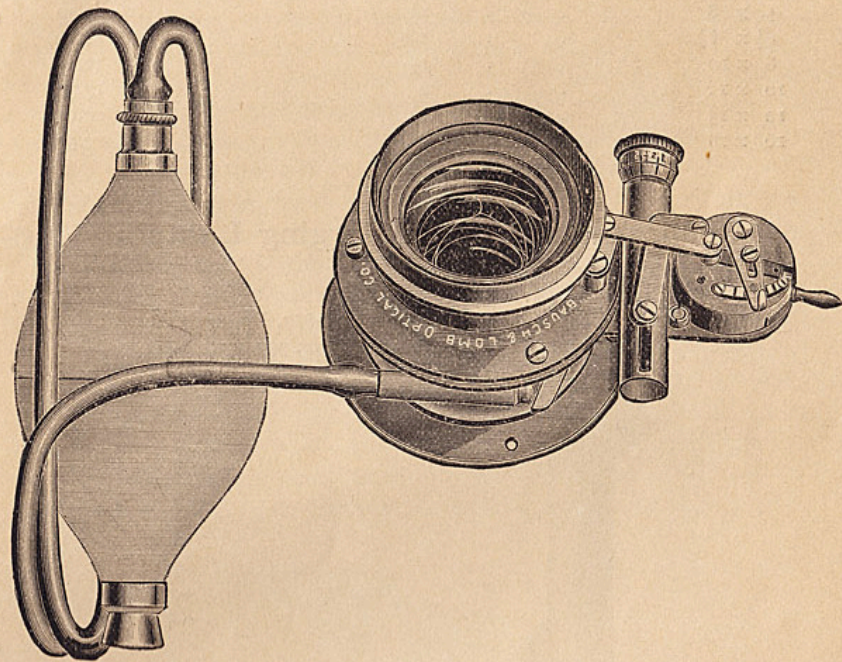


The shutter is attached to the front of the lens by means of a collar. They are kept in stock of two sizes, aperture of  $1\frac{1}{4}$  and  $1\frac{3}{4}$  inches. Collars may be fitted to any of the regular makes of lenses in market. Price, each, . . . . . \$12.00

### Diaphragm Shutter.

(Time and instantaneous. With Silent Time Attachment.)

Model 1889.



**T**HIS SHUTTER is the first practical form based on the principle of the Iris Diaphragm. Its advantages have been so apparent and its workmanship of such excellent quality, that it has been received with the most pronounced favor since its first introduction.

A series of steel blades are pivoted around the central opening, and in making exposures form a gradually expanding aperture to the size desired, and closing, form a contracting opening until the closed pivot is reached.

In the Model 1889, the spring, which is of such strength that it will not break, remains at one high tension, and a variation in speed is obtained by means of air compression in the horizontal tube. This is a new addition which is exceedingly valuable, as by means of the screw-head at its end a variation in speed may be obtained from one to one-

hundredth second, and when the mechanism is set for it, silent time exposures can be made. The variation for size of opening is made by means of a lever on the face of the revolving disc which indicates the various sizes of stops by a pronounced click. The change from time to instantaneous, or *vice versa*, is made by a lever at the back of the mounting, and when set for one or the other, it remains so until again changed.

All shutters are supplied with rubber bulb and tube.

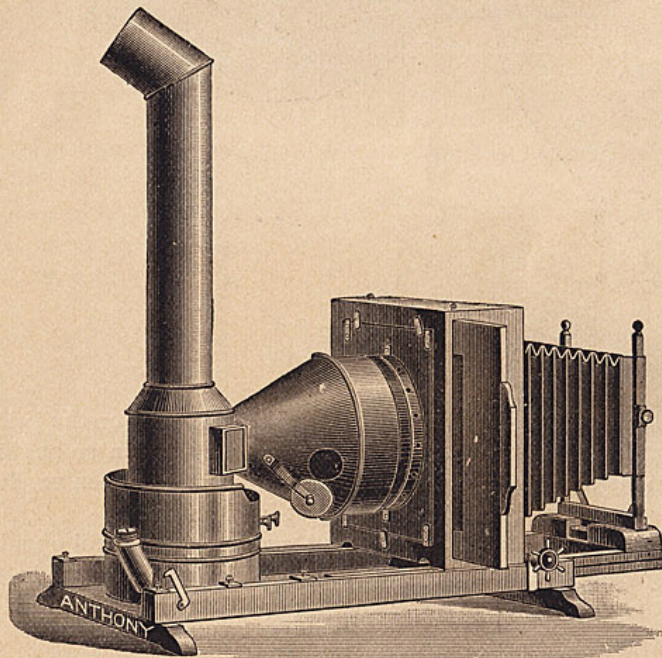
4 x 5	.	.	$\frac{7}{8}$	.	.	\$12.50
5 x 8	.	.	$1\frac{1}{8}$	.	.	13.50
$6\frac{1}{2} \times 8\frac{1}{2}$	.	.	$1\frac{7}{8}$	.	.	14.50
8 x 10	.	.	$1\frac{3}{4}$	.	.	16.00
10 x 12	.	.	2	.	.	17.50
12 x 15	.	.	$2\frac{1}{4}$	.	.	19.00
16 x 18	.	.	$2\frac{3}{8}$	.	.	20.50

### Cooper's Universal Enlarging Lantern.

(Patented.)

Patented Cooper & Lewis October 11, 1887, No. 371,252.

T. H. McAllister April 6, 1886, No. 339,451.



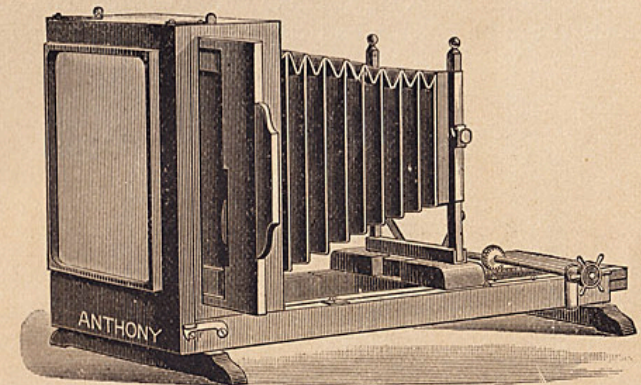
Above shows it as in use with *artificial* light.

THE CUTS give an admirably clear idea of the Universal Lantern, and at a glance any one acquainted with the mechanism of projecting lanterns will see its advantages. With only a passing reference

to the camera and front, the use of which is obvious, your attention is called to the apparatus for illumination, which is by all odds the most important feature of any enlarging lantern.

The lamp, which is intended for use with kerosene, is provided with a double-wick burner, both flames emerging through a single aperture in the dome. This feature increases the volume of light two-fold; the burner is provided with a close-fitting chimney-base fitted with an aperture covered with non-actinic glass, intended both for dark room illumination and also for observing the height of the flames. A conical light conductor connects the lamp with the condensing lenses, and is made to telescope so as to adjust the light accurately to the focus of the condensers; this light conductor has an aperture at the side covered with a movable metallic disk, and is intended to admit of the operator finding the centering point of his flame on the condensers; this he will see at a glance by the reflector. The lamp is not rigid, but can be revolved so as to bring the flame in any desired position. Some negatives require a more intense light than others, and experience will show how to arrange the light for any particular occasion.

The form of this lantern is such that all heat passes upwards through the chimney, and as there is no boxing around the apparatus it is always cool, and all risk of breaking lenses or negatives is avoided. The change from the use of artificial light to daylight is better shown in the cut than described in writing. With this lantern and a half-inch stop in a half-size portrait lens, life-sized enlargements from cabinet negatives may be easily made with Anthony's Reliable Bromide Paper in from thirty-five seconds to one minute, according to density of negative.



Cooper Lantern as transformed into a *Daylight Enlarging Camera*.

The design of this lantern is the result of long practical experience with various methods of illumination for enlarging, and we can guarantee its giving results as perfect as the electric light at a cost that makes comparison ridiculous. This lantern is also admirably suited for slide projection, and is therefore of double value to societies and colleges.