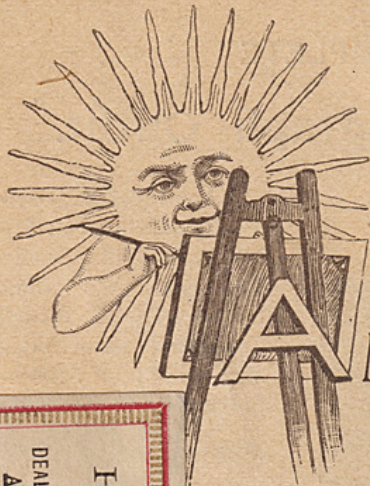


1857



Taken with the Harvard Camera.



MATEUR

PHOTOGRAPHIC SUPPLIES.

of photographic materials is guaranteed the best quality.

When you order photographic supplies it would be a good plan for friends to club together and have the goods sent to one address by express. Such a plan would reduce the transportation charges to an insignificant sum.

SAMPLE PHOTOGRAPHS. On receipt of TEN CENTS we will send to any address a sample photograph made with either of the Anthony, Hawk-Eye or Argus Cameras.

On receipt of FOUR CENTS we will send a photograph taken with the Harvard Camera.

Address all orders to

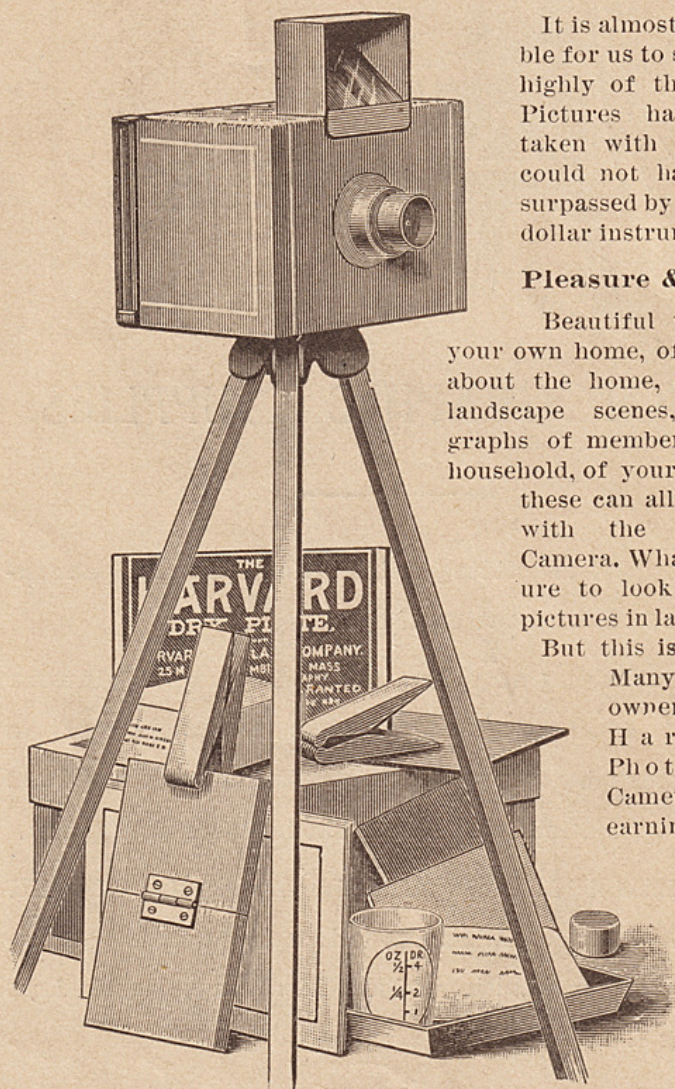
PERRY MASON & COMPANY,

41 Temple Place,

BOSTON, MASS.

HARRY PLATT,
NANTUCKET, MASS.,
DEALER IN ALL KINDS OF SUPPLIES FOR
AMATEUR PHOTOGRAPHERS,
"THE FALCON" HAND CAMERA,
the best low-priced Detective made.

THE COMPLETE Harvard Photograph Outfit.



It is almost impossible for us to speak too highly of this Outfit. Pictures have been taken with it which could not have been surpassed by a fifteen-dollar instrument.

Pleasure & Profit.

Beautiful views of your own home, of the pets about the home, charming landscape scenes, photographs of members of the household, of your friends—these can all be taken with the Harvard Camera. What a pleasure to look at these pictures in later years.

But this is not all.

Many of the owners of the Harvard Photograph Camera are earning money

by taking orders for photographs from friends and neighbors.

The Outfit.

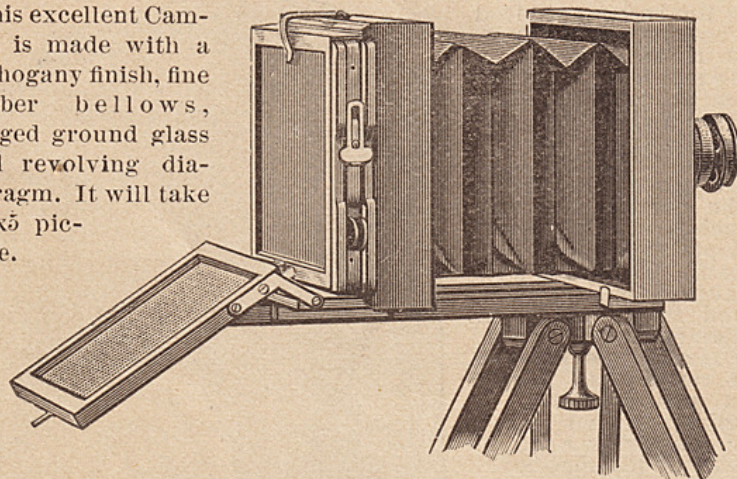
The complete Outfit includes the Harvard Camera, Finder Tripod, and all needed Apparatus, Chemicals, Dry-plates, Sensitized Paper, and full instructions.

Price of the Complete Outfit by express, charges not prepaid - - - - -	\$1.75
Price, when sent post-paid through the mail - - - - -	2.25

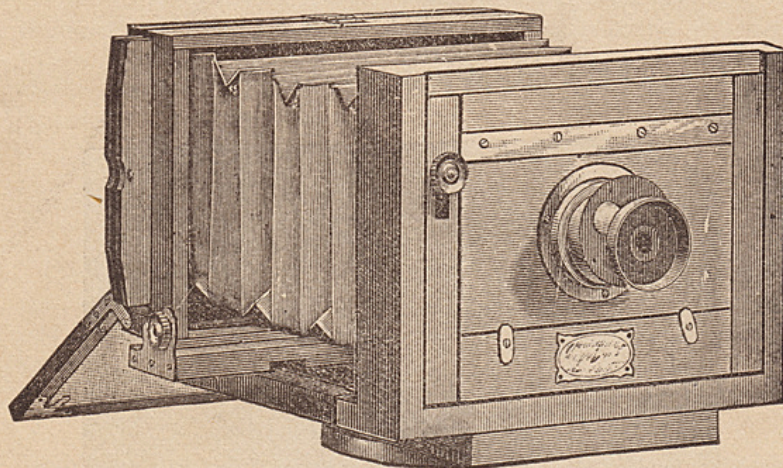
Anthony's Cameras

With Special Outfits.

This excellent Camera is made with a mahogany finish, fine rubber bellows, hinged ground glass and revolving diaphragm. It will take a 4x5 picture.



The Complete Outfit includes the above Camera, together with a fine Achromatic Lens, folding Tripod, Double Dry Plate Holder, Dry Plates, Sensitized Paper, Trays, Printing Frame, Card Mounts, Focusing Cloth, Glass Graduate, Ruby Lantern, Carrying Case, Book of Instructions and complete set of Chemicals for developing and fixing the plates and printing and toning the pictures. Price of this fine Outfit, complete, only \$10.



This fine Camera is made of finished mahogany, with patent swing back, rising front, folding bed, patent clamp hooks, reversible plate, fine rubber bellows, hinged ground glass, revolving diaphragm, and will take a 5x8 picture.

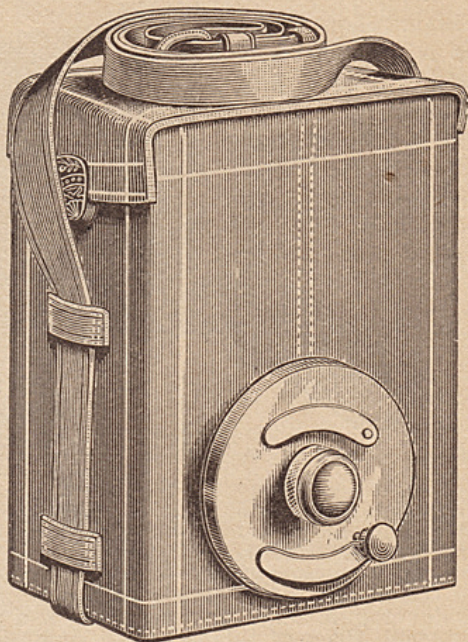
The complete Outfit includes a Camera with fine Achromatic Lens, Carrying Case, Folding Tripod, Double Dry Plate Holder, 12 Dry Plates, Sensitized Paper, Printing Frame, Ruby Lantern, Trays, Graduate, Card Mounts, Focusing Cloth, Chemicals for developing the plates and printing the pictures, and complete instructions.

Price of this Camera, including the complete DEVELOPING and PRINTING OUTFIT, has been placed at the very low price of \$15.

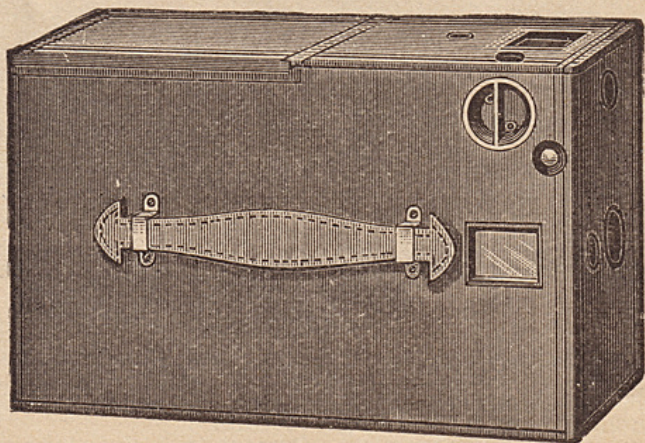
The Argus 12-Shot Repeating Camera.

The Argus Camera is the best low-priced Camera ever made. It is enclosed in a handsome russet leather case. The lens-tube and other exposed parts are of brass, burnished and lacquered. Height of the Camera is seven inches, width five, and depth three and one-half. The picture taken by it is circular and three inches in diameter.

The Argus Camera is remarkably simple in construction. It holds twelve dry-plates, and by a simple turn of the lens-tube, they can be brought one by one into the field of the lens, and a picture taken. The Shutter is adapted for either "Snap Shots," or Time exposures. No focusing is necessary. Price, \$10.



The Hawk-Eye Camera.



This Camera is so well known that a full description at this time is not necessary. It combines more advantages and desirable qualities than any of the higher cost Cameras now on the market.

It has a key for regulating the speed of the Shutter, vertical and horizontal Finders, interior Ground Glass Screen, and is now finished without a single attachment extending beyond the Case. Will take a 4x5 picture. Natural wood finish, with leather handle. Price, \$15.

Brief Photographic Notes.

See seventh page of this Catalogue for prices.

The Harvard Dry Plate. This plate has been sold by us for a number of years. It is a quick plate and requires careful management to avoid over-exposure. They will give good satisfaction for instantaneous work.

The Phenix Dry Plate. This plate can be exposed somewhat longer than the Harvard plate, which makes it better adapted for amateur use. We can recommend their use with both the Harvard and Anthony Cameras.

ANTHONY'S ECONOMICAL DEVELOPER.

This is a one-solution Developer, and is easily managed by the beginner. It gives beautiful, soft negatives, is quick in action, and will not veil or haze the shadows when the plate has been under-exposed. This Developer is put up in a highly concentrated form, and will keep some time.

ECONOMY RUBBER TRAYS.

These fine Trays are made of polished hard rubber. A depression in the bottom permits one to place a finger underneath the plate, so that the plate can be easily removed without fear of scratching the sensitized film.

BUCK'S CONCENTRATED DRY DEVELOPER.

This fine Developer is put up in small papers, ready for instant use by the addition of water only. It is very reliable in its action and will be found a great convenience.

REVOLVING PHOTOGRAPH TRIMMER.

This article is designed for trimming photograph prints. Its use is quite necessary when a neat and tasty mounting is desired.

THE DUPLEX RUBY LANTERN.

Our expert has invented and perfected for us the most convenient Light we have yet seen. The glass is "copper flashed," to prevent fogging. The interior is arranged for use of candle.

Its two Ruby Glasses face two ways. By so doing, the entire surface of your work bench is flooded with the Ruby Light. It is made in the best possible manner. Size, $4\frac{1}{2} \times 6\frac{1}{2}$ inches.

THE EFFICIENT PLATE LIFTER.

This Plate Lifter is not only a convenience, but almost a necessity. It is made like an ordinary open-end thimble, with a pointed piece of metal soldered securely to it. By means of this point a plate can be easily lifted from the tray.

ORANGE AND RUBY FABRIC.

This material is used by photographers as a substitute for ruby glass. A combination of the two colors makes an absolutely safe light. In developing slow plates Orange Fabric alone may be used with safety. But all rapid plates require a combination of the Ruby and Orange Fabric. This material is made of linen and will make a safe light at a low price.

THE "METEOR" FLASH LAMP.

This Lamp is used for taking instantaneous views at night. It consists of a circular asbestos wick, a receptacle for magnesium powder, together with a rubber bulb for throwing the powder through the flame. It will give an intense light sufficient to fully expose from ten to fifteen feet of space.

THE SUCCESS PRINT MOUNTER.

The successful mounting of prints requires an apparatus for expelling the small air bubbles which collect between the print and cardboard. The Success Print Mounter consists of two rubber rolls properly attached to a handle. By means of this apparatus the prints can be mounted in a rapid and successful manner.

PURE METALLIC MAGNESIUM POWDER.

This Powder is unexcelled for its actinic power, and is perfectly safe because it can only be ignited by actual contact with flame.

DAISY PERMANENT STARCH PASTE.

This Paste is prepared for mounting prints. It is put up in a convenient form, and will not mould, sour or discolor. It is used very largely by amateurs.

General Price List.

By express, charges to be paid by the receiver. *If sent by Mail.*

Phenix or Harvard Dry Plates, per doz.,	$2\frac{1}{2} \times 4$	\$0.35	\$0.60	
Phenix or Harvard Dry Plates, per doz.,	$3\frac{1}{4} \times 4\frac{1}{4}$.45	.80	
Phenix or Harvard Dry Plates, per doz.,	4×5	.65	1.10	- 65
Phenix or Harvard Dry Plates, per doz.,	5×8	1.25	Exp.	
Anthony's Sensitized Paper, per doz.,	$2\frac{1}{2} \times 4$.15	.18	
Anthony's Sensitized Paper, per two doz.,	$3\frac{1}{4} \times 4\frac{1}{4}$.30	.35	
Anthony's Sensitized Paper, per two doz.,	4×5	.45	.50	- 45
Anthony's Sensitized Paper, per two doz.,	5×8	.85	.95	
Anthony's Ferro-prussiate, per two doz.,	4×5	.20	.30	
Anthony's Ferro-prussiate, per two doz.,	5×8	.40	.50	
Harvard Printing Frames, each,	$2\frac{1}{2} \times 4$.10	.15	
Fairy Printing Frames, each,	$3\frac{1}{4} \times 4\frac{1}{4}$.45	.55	
Fairy Printing Frames, each,	4×5	.45	.60	
Fairy Printing Frames, each,	5×8	.60	.80	
Japanned Iron Developing Trays, each,	$2\frac{1}{2} \times 4$.08	.13	
Japanned Iron Developing Trays, each,	$4\frac{1}{4} \times 5\frac{1}{4}$.20	.30	
Japanned Iron Developing Trays, each,	$5\frac{1}{4} \times 8\frac{1}{4}$.25	.40	
Amber Glass Trays, each,	$5\frac{1}{2} \times 8\frac{1}{2}$.35	Exp.	
Polished Hard Rubber Trays, each,	$4\frac{1}{2} \times 5\frac{1}{2}$.28	.38	
Polished Hard Rubber Trays, each,	$5\frac{1}{2} \times 8\frac{1}{2}$.55	.70	
Zephyr Double Dry Plate Holder, each,	4×5	1.20	1.30	
Zephyr Double Dry Plate Holder, each,	5×8	1.35	1.50	
Anthony's Economical Developer, per bottle,		.40	Exp.	
Concentrated Dry Developer, per pack.,	$2\frac{1}{2} \times 4$ plate,	.15	.20	
<i>D</i> - Concentrated Dry Developer,	4×5 plate,	.20	.25	- 20
Concentrated Dry Developer,	5×8 plate,	.30	.35	
<i>Tone</i> Chloride Gold and Sodium, 15 grains,		.35	.40	- 35
<i>T</i> Bicarbonate of Soda, $\frac{1}{4}$ lb.		.05	.10	- 05
<i>Fix</i> - Hyposulphite of Soda, per lb.		.08	.28	- 08
Pure Metallic Magnesium, per ounce,		.50	.55	68
The "Meteor" Flash Lamp,		.50	.60	
Duplex Ruby Lamp,		.75	.95	
Ruby Glass,	3×4	.05	.10	
Ruby Glass,	8×10	.30	.45	
Glass Graduate, half ounce,		.05	.10	
Glass Graduate, two ounce,		.20	.30	
Daisy Permanent Paste, per jar.		.25	.45	
Focusing Cloth,	18×36	.25	.40	
Primrose Card Mounts, per doz.,	$2\frac{1}{2} \times 4$ print,	.05	.10	
Primrose Card Mounts, per doz.,	$3\frac{1}{4} \times 4\frac{1}{4}$ print,	.06	.11	
Primrose Card Mounts, per doz.,	4×5 print,	.08	.13	
Primrose Card Mounts, per doz.,	5×8 print,	.15	.25	
The Efficient Plate Lifter, each,		.15	.20	
Revolving Photograph Trimmers, each,		.30	.35	
The Success Print Mounter, 6 inch, each,		1.00	1.15	
Orange and Ruby Fabric, per square foot,		.10	.12	

PERRY MASON & COMPANY,

41 Temple Place,

Boston, Mass.