

THE

FAIRY CAMERA,

THE FINEST



EVER MADE.

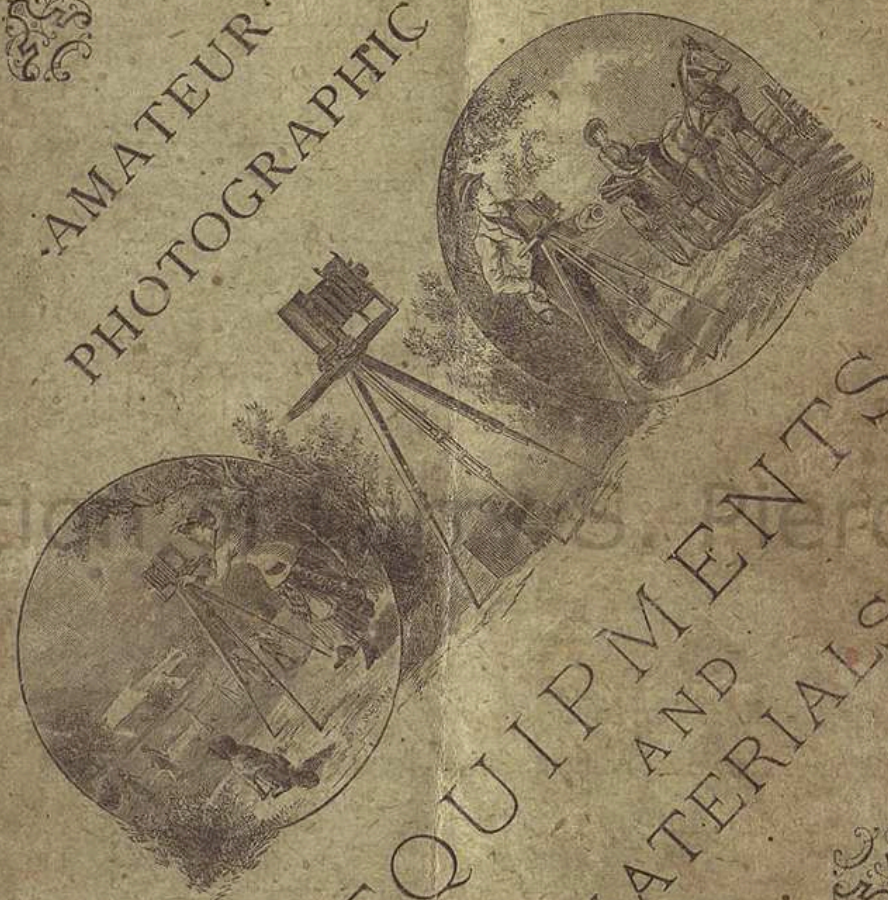
E. & H. T. ANTHONY & CO., MANUFACTURERS

Anthony's Illustrated Catalogue



AMATEUR PHOTOGRAPHIC

OF



EQUIPMENTS AND MATERIALS



NEW YORK:
E. & H. T. ANTHONY & CO., No. 591 BROADWAY.

MAY, 1885.

PROF. CHAS. F. CHANDLER, PH. D.

OF THE

SCHOOL OF MINES

Columbia College,

NEW YORK,

HAS ASSUMED THE EDITORSHIP OF

ANTHONY'S SEMI-MONTHLY

PHOTOGRAPHIC * BULLETIN,

WHICH IS ADMITTED TO BE THE
BEST * PHOTOGRAPHIC * HELPER

THAT IS PUBLISHED.

AMATEURS OR PROFESSIONALS

Who need any advice can obtain it through its *Correspondence Column*.

* It will pay you to SUBSCRIBE for it. *

SAMPLE COPIES FREE.

Subscription, \$2 00 per Annum.

E. & H. T. ANTHONY & Co., PUBLISHERS,
591 Broadway, NEW YORK.

LP991

ANTHONY'S

ILLUSTRATED CATALOGUE

OF

AMATEUR


PHOTOGRAPHIC

EQUIPMENTS.

NEW YORK:

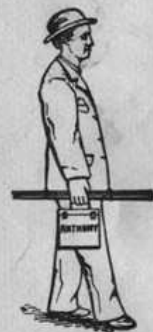
E. & H. T. ANTHONY & CO., NO. 591 BROADWAY.

MAY, 1885.

 The prices given in this catalogue are liable to fluctuation. When any article is reduced, the buyer will get the benefit without reference to the printed list.

A FEW FACTS.

Presumably the reader of the following pages knows something of the interesting art for which the articles enumerated in this catalogue are provided. If not, he can acquire a general idea of it from what follows, and we shall be pleased, on receipt of fifty cents, to mail to any address a book, in which all the details are given. Recently published by our house, it has been penned and edited by eminent theoretical and practical photographers.



That work has been written with the view of stating in the most simple and concise language everything necessary for any one to know who may be disposed to engage in photography as an amateur. It will be found equally serviceable to those who desire to practice the art as an aid in their business or profession, and all its statements may be implicitly relied on for accuracy and practicability.

The introduction of the gelatino-bromide dry plate has so revolutionized photography that but little preliminary knowl-

edge of it is now essential; in fact, it is astonishing what can be accomplished by totally inexperienced amateurs who may exercise a little taste and judgment.

It is scarcely to be supposed that success should always attend one's first efforts, but rapid progress can generally be made by old or young, lady or gentleman, who may manifest the slightest disposition to excel.

Unlike the old "wet" plate, the gelatino-bromide process has the advantage of admitting a much wider latitude of exposure—that is to say, the actual time which the sensitive plate may now be subjected to light, though still important, is far less so than by the old collodion process, and the subsequent operations are free from the former objections of complexity, uncertainty and stains. The apparatus and chemicals required are also few and inexpensive, and there is nothing which the veriest tyro in chemistry cannot readily master.

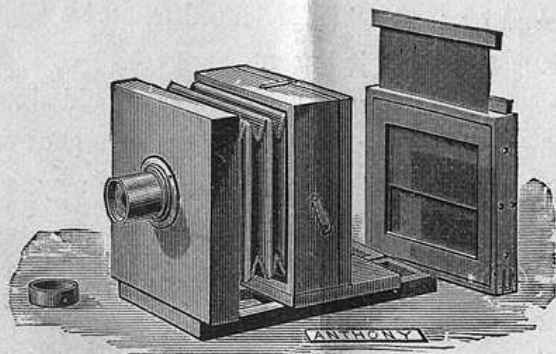


Another obvious improvement is recognized in the exceeding lightness and portability of the equipments, and their greater adaptability to the requirements of the public.

Unfortunately the increasing demand has led many persons to engage in the manufacture and sale of apparatus and materials that are quite inadequate for the attainment of satisfactory results. We therefore point with pride to the intrinsic excellence of every item in the following list—the outcome of long and diligent effort and experience in the preparation of photographic supplies.

ANTHONY'S AMATEUR OUTFITS.

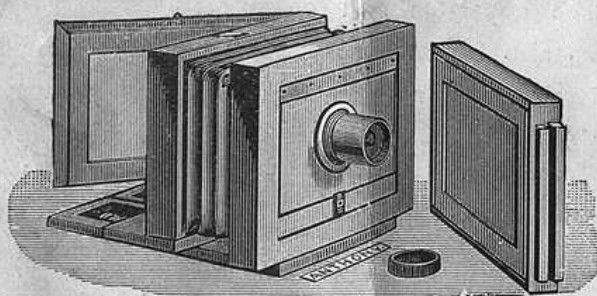
Description and Prices.



Equipment No. 1.

Stained camera, for making pictures vertically or horizontally measuring 4 x 5 inches, with one double dry plate-holder, fine single achromatic lens, improved tripod, and carrying case, \$9 00

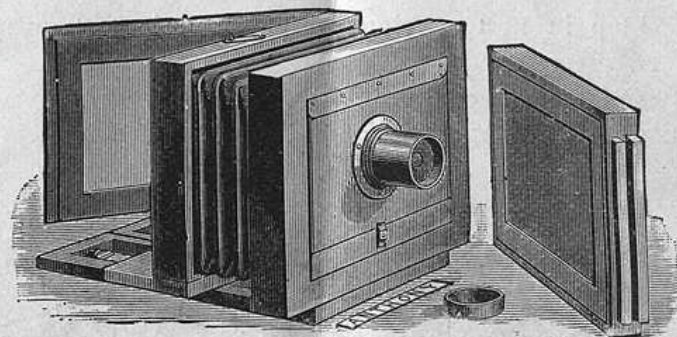
Extra double dry plate-holders, each, 2 00



Equipment No. 1½.

Stained camera, suitable for making pictures measuring 4½ x 6½ inches, with removable front, one double dry plate-holder, fine single achromatic lens, improved tripod and carrying case, \$10 00

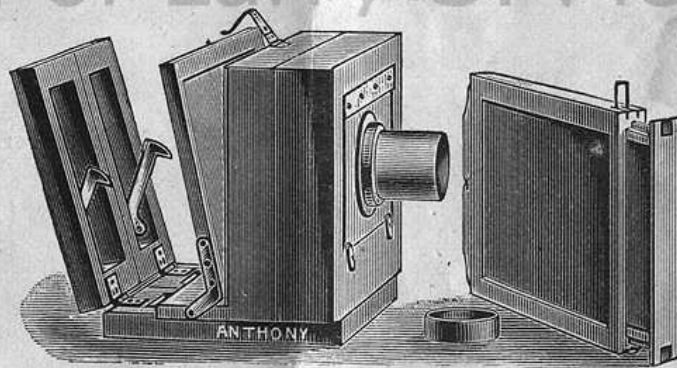
Extra patent double dry plate-holders, each, \$2 25



Equipment No. 2.

Stained camera, for making pictures measuring 5 x 8 inches, with removable front, one double dry plate-holder, fine single achromatic lens, improved tripod and carrying case, \$10 00

Extra patent double dry plate-holders, each, 2 25



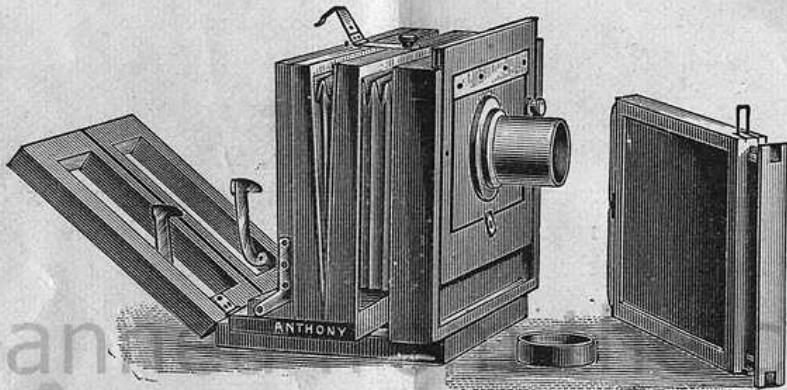
Equipment No. 2 A.

PATENTED.

Consisting of 5 x 8 handsomely-finished camera, with folding bed (fastening with our patent clamp hooks), removable front, E. A. single achromatic view lens, with diaphragms, patent perfect double dry-plate holder (smallest and lightest in market), and patent folding tripod (camera, holder lens and

tripod top in neat carrying case), tripod legs strapped together.

Price for above, complete,	\$12 00
Extra holders for above, each,	2 50

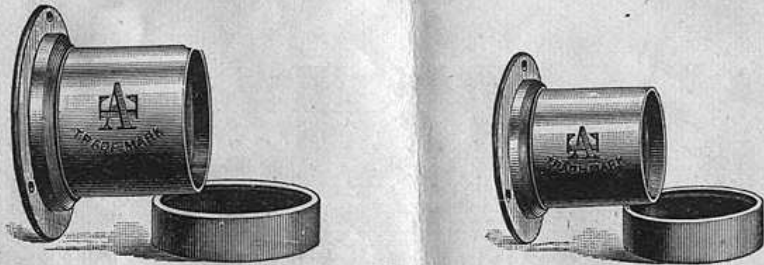


Equipment No. 2 B.

PATENTED.

Same as No. 2 A, with addition of swing back and rising front.

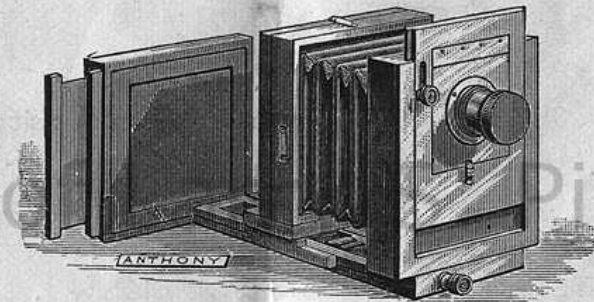
Price, complete,	\$15 00
Extra holders, each,	2 50



Equipment No. 3.

Stained camera similar to No. 2, with lens for making 5 x 8 pictures, and a pair of fine achromatic lenses for making either stereoscopic views on a 5 x 8 plate, or two 4 x 5 views on a 5 x 8 plate. Price, including the three lenses, tripod and carrying case, \$16 50

Where the lens for making single pictures on a 5 x 8 plate is not desired the remainder of the outfit, including the stereoscopic lenses, will be supplied for \$13 00.

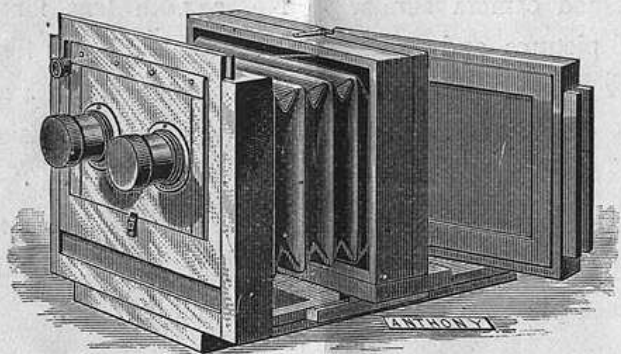


Equipment No. 4.

A mahogany camera for making pictures vertically or horizontally measuring 4 x 5 inches, complete with rising front, folding bed, rubber bellows, and focussing screw, one fine single achromatic lens, improved tripod, six 4 x 5 patent double dry-plate holders, and carrying case, . . . \$25 00

Parts of No. 4, supplied as follows:

4 x 5 Camera, as above, <i>without shield</i> ,	\$10 00
4 x 5 Patent double dry plate-holders, each,	2 00
Single achromatic lens,	3 75
Improved tripod,	2 25
Carrying cases, each,	75



Equipment No. 5.

A 5 x 8 Mahogany Stereoscopic Camera, with rising front, folding bed, rubber bellows, removable ground-glass, focusing screw, extra front board, six 5 x 8 patent double dry plate-holders, improved folding tripod, carrying case and one pair of fine achromatic stereoscopic view lenses, . . . \$33 00

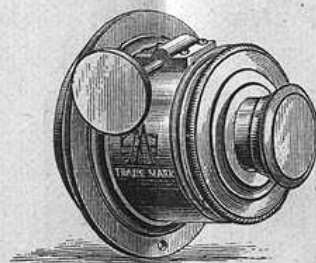
Parts of No. 5 outfit supplied as follows:

5 x 8 Camera, as described, <i>without shield</i> , . . .	\$12 50
5 x 8 Patent double dry plate-holders, each, . . .	\$2 25
Pair of achromatic stereoscopic lenses, . . .	7 50
Improved tripod,	2 25
Carrying case,	1 00

Equipment No. 6.

Same as No. 5, with the addition of a fine single achromatic lens, for producing single views on plates measuring 5 x 8 inches.

Price complete, including the three lenses, . . . \$37 50



Equipment No. 7.

Cherry camera with folding bed, changing front and focussing screw, for making pictures on a $6\frac{1}{2}$ x $8\frac{1}{2}$ plate, including one patent double dry plate-holder, and carrying case. (Lens and tripod not included.) . . . \$13 50

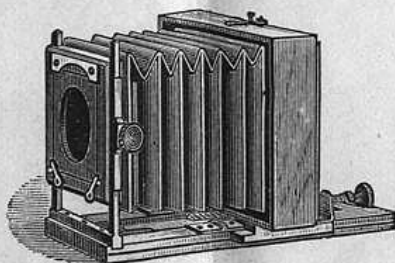
Extra patent double holders, each,	\$4 00
Improved folding tripod,	2 25
$6\frac{1}{2}$ x $8\frac{1}{2}$ E. A. single achromatic lens, with rack movement and diaphragms,	6 40

Equipment No. 8.

Cherry camera in same style as No. 7, but for pictures on 8 x 10 plate, including one patent double dry plate-holder and carrying case. (Lens and tripod not included.) \$17 00

Extra patent double holders, each,	\$5 00
Improved folding tripod,	2 25
8 x 10 E. A. single achromatic lens, with rack movement and diaphragms,	7 60

The Patent Bijou Camera,



For $3\frac{1}{4} \times 4\frac{1}{4}$ Plate.

This little camera is the neatest, nattiest, and altogether nicest camera of its kind ever made. When folded it measures $5 \times 5 \times 3\frac{1}{2}$ inches, and can readily be put in an ordinary hand-grip or may even be carried in the overcoat pocket. It weighs only $14\frac{1}{2}$ ounces, and the holders are correspondingly light and compact.

It has a sliding front, hinged ground glass, and folding bed, which is provided with a novel arrangement for fixing it in position, enabling the operator to adjust it in a few seconds. It is made of mahogany, with our new hard finish, flexible bellows and brass mountings, making a remarkably elegant little instrument.

As the plate is the same size as those used with magic lanterns, slides may be made from them by contact printing in an ordinary printing frame. By using rapid printing paper in connection with our enlarging lantern, the pictures may be made as large as desired. For tourists, to whom weight and bulk are objections, this camera is of especial value.

Price of camera, with one double holder, . . . \$12 00

Price of patent improved double dry plate-holders,
 $3\frac{1}{4} \times 4\frac{1}{4}$ each, 2 00

Anthony's Novel View Cameras.

PAT. MARCH 28, 1882, AND FEB. 20, 1883.

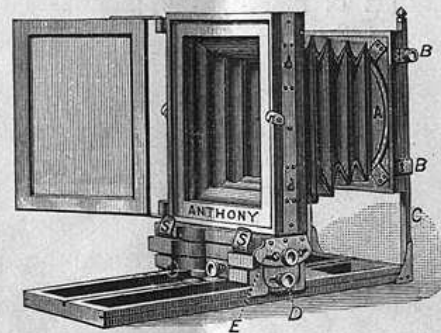


Fig. No. 1.—Camera in position for vertical picture.

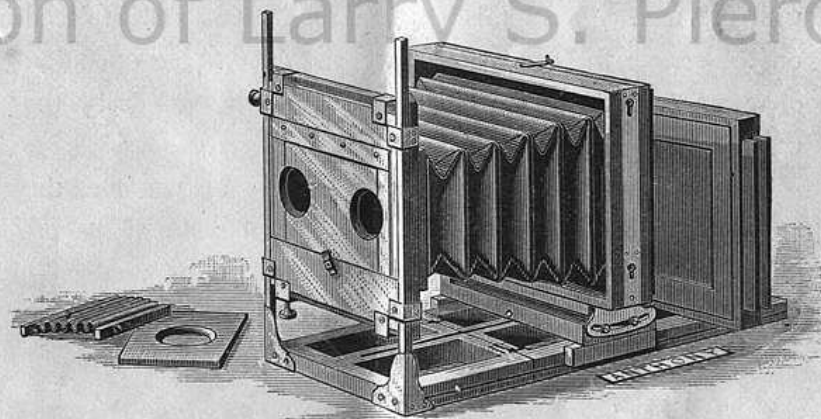


Fig. No. 2.—Camera in position for horizontal picture, showing working of swing back.

These are made in the best possible manner, and of first quality mahogany in good hard varnish finish. They have single and double swing backs, cone bellows and folding

Anthony's Novel View Cameras (Continued).

beds; are very light, compact and strong. Their peculiar construction admits of making the pictures either vertically or horizontally with equal ease, the change of position being effected very quickly.

The rear part of the camera is separated from the bed by merely pushing it from left to right, the keyhole slots releasing the heads of the screws.

The front end of the bellows being arranged so as to revolve in a light framework which runs on the two hollow upright brass rods, when the rear of the camera is separated from the bed the entire bellows revolves at the same time with the rear. When this is turned on its side and replaced on the screws the camera is reversed. The whole operation of reversing a 5 x 8 camera requires but two seconds by the watch.

They are made with as long a bellows as possible, the 5 x 8 being about four inches longer than those of the ordinary kind. The ground glass is hinged to the camera.

When packed, the camera should always be put in a vertical position. They are put up in carrying cases without additional cost.

Novel Dry Plate Holders (Patented).

10 x 12, (single,) each, \$5 50	17 x 20, (single,) each, \$12 00
11 x 14, " " 6 75	18 x 22, " " 14 00
14 x 17, " " 10 00	

Anthony's Novel View Cameras (Continued).

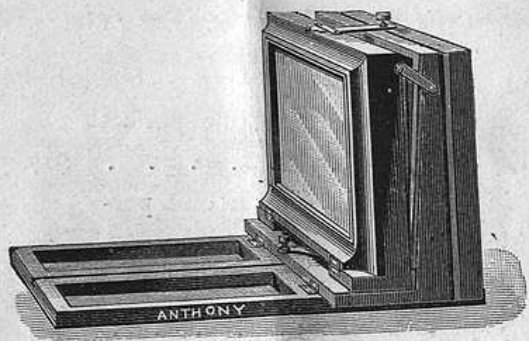
	PRICES:	Single Swing.	D'ble Sw.
4 x 5, in carrying case, with one perfect double dry plate-holder,		\$17 50	
4 1/4 x 6 1/2, in carrying case, with one perfect double dry plate-holder,		20 00	
5 x 8, in carrying case, with one perfect double dry plate-holder,		20 00	\$23 00
6 1/2 x 8 1/2, in carrying case, with one perfect double dry plate-holder,		25 00	28 00
8 x 10, in carrying case, with one perfect double dry plate-holder,		30 00	33 00

(The three latter sizes have stereo. partition and extra front.)

Price, without Holder.

10 x 12 S'gle swing, \$30 00	10 x 12 D'ble swing, \$35 00
11 x 14 " 35 00	11 x 14 " 40 00
14 x 17 " 45 00	14 x 17 " 50 00
17 x 20 " 52 50	17 x 20 " 60 00
18 x 22 " 57 50	18 x 22 " 65 00

All sizes above 8 x 10 are used with our Novel Shield, each one of which has two slides, working in the *end* and in the side of shield; therefore the slide can be withdrawn from the side of the shield no matter in what position the camera is placed. These shields are made single, and for dry plates only. Prices of the cameras above 8 x 10 are given without shields, but include the carrying case.



Model Stereo. Box.

The central diaphragm can be removed, the front changed, and single views made vertically or horizontally with one tube. It has an adjustment for swing-back, hinged ground-glass and folding platform, and, when folded, occupies but little space.

5 x 8 with patent double dry plate holder, . . . \$18 00
 Extra double holders, each, 2 25

Anthony's Amateur Albums.

Made of good quality cardboard and neatly bound.

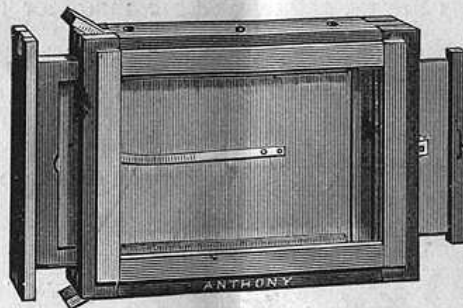
Size, 6¾ x 4¾ . . . \$0 75 | Size, 11 x 14, . . . \$3 50
 " 8 x 10 . . . 1 50 |

Anthony's Anti-frill.

To prevent frilling of gelatino-bromide negatives when developed with the ferrous oxalate developer. It is not adapted to the alkaline pyro. developers. Prices :

8 ounces, . . . 45 cts. | Quart, \$1 55
 Pint, 80 " | ½ Gallon, 3 00

Anthony's Patent Perfect Double Dry Plate Holders or Shields.



We would call special attention to our Patent Dry Plate Shields or Plate-holders. They are so arranged that one or two 4 x 5 plates can be used in a 5 x 8, or two 4¼ x 6½ can be used in a 6½ x 8½, or one or two 5 x 8 in an 8 x 10 plate-holder. Thin wooden frames can be supplied for holding still smaller sizes, if desired, so that the amateur can experiment with smaller plates than the extreme limit of his holders, and at much less expense. They are also much more readily managed in the ruby light than any other style, and are guaranteed to be the only perfect plate-holders in the market. (See Inside Dry Plate Kits, page 16.)

4 x 5, each, . . . \$2 00 | 6½ x 8½, each, . . . \$4 00
 4¼ x 6½, " . . . 2 25 | 8 x 10, " . . . 5 00
 5 x 8, " . . . 2 25 |

Anthony's Patent Perfect Dry Plate Holders are the only ones with which inside kits or frames for smaller sizes can be used.

Anthony's Patent Perfect Plate Holders or Shields. (Wet plate Focus.)

These shields are reversible, and are made for the convenience of those who wish to use them on the same camera as for wet plates, without changing the focus of the ground glass. They fit our regular Success or Climax View Cameras, but not the Dry Plate Cameras. In ordering please give exact outside measure of wet plate shield. Special sizes, extra.

For 5 x 8 stereoscopic plates, each,	\$3 75
6½ x 8½ Reversible, \$6 00	11 x 14 Reversible, 11 00
8 x 10 " 7 00	14 x 17 " 15 00
10 x 12 " 9 00	17 x 20 " 17 50

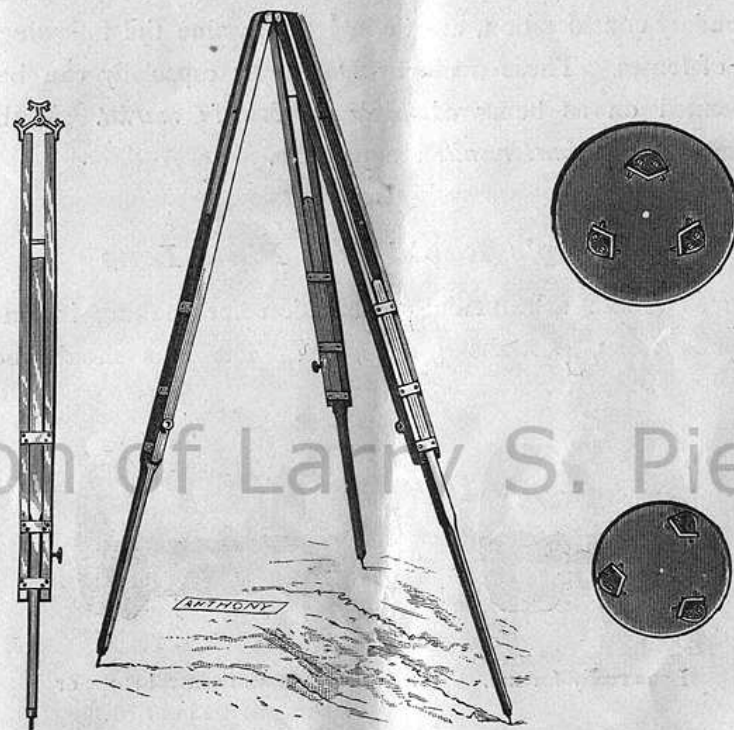
Inside Dry Plate Kits.



Thin wooden frames to hold small sized plates, fitting in larger shields, thus enabling the amateur who has a large camera to use small plates as well as large ones. See p. 15.

To fit shields.	Each.	To fit shields.	Each.
4 x 5—3¼ x 4¼, . . .	\$0 25	8 x 10—4¼ x 6½, 5 x 7,	
5 x 8—3¼ x 4¼, 4 x 5,		5 x 8, 6½ x 8½, . . .	\$0 35
and 4¼ x 5½, . . .	30	10 x 12—8 x 10, . . .	55
6½ x 8½—4 x 5, 5 x 8,		11 x 14—8 x 10, 10 x 12,	60
4¼ x 6½, 5 x 7, . . .	30	14 x 17—11 x 14, . . .	75

Tripod or Camera Stand.



There are several varieties. The telescopic have legs which may be shortened or lengthened separately at will.

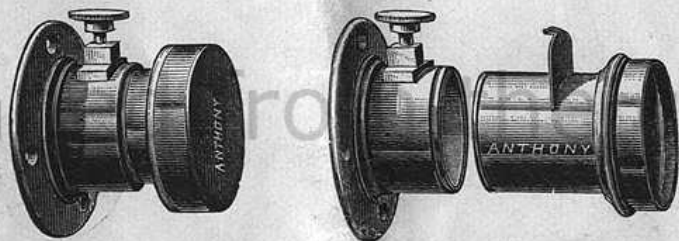
Small round wooden top,	\$2 25
Large " "	2 25
Telescopic, small size,	3 50
" large "	3 75

Finer Quality of Lenses.

Amateurs who aim to excel, and with whom the cost is a secondary consideration, are invited to examine the following list of lenses. Those made by Dallmeyer especially can be depended on as being *absolutely the best in market*. With these the very *finest results* are possible.

Anthony's Rapid Dry Plate Lens

Has a double achromatic combination for making instantaneous views, portraits groups, etc. The lens should be



Lens ready for use.

Showing how the central stops or diaphragms are inserted.

focussed with the full opening. Price, No. 1 Rapid Lens, for 4 x 5 pictures, \$15 00; No. 2, for 5 x 8 pictures, \$25 00; No. 3, for 8 x 10 pictures, \$37 50

The Remarkable Platyscope Lens.

The Remarkable Platyscope Lens, with central stops, is unequalled, at the price, for all kinds of outdoor work, groups, etc.



The Platyscope Lens.

A.	equiv. focus,	6 $\frac{3}{8}$ in.,	size of view,	5 x 7,	each,	\$24 00
B.	"	8 $\frac{1}{2}$ "	"	6 x 8,	"	33 00
C.	"	11 $\frac{1}{2}$ "	"	8 x 10,	"	40 00
D.	"	12 $\frac{1}{2}$ "	"	10 x 12,	"	48 00
E.	"	15 $\frac{1}{2}$ "	"	11 x 14,	"	58 00
F.	"	19 $\frac{1}{2}$ "	"	14 x 17,	"	80 00
G.	"	24 "	"	17 x 20,	"	120 00



Dallmeyer's Wide-angle Rectilinear Lenses.*

Dallmeyer's Wide-angle Rectilinear Lens, with rotating diaphragms, for views of buildings, etc., in confined situations, where very little distance can be had. An excellent landscape lens of about twice the focal length of the double combination is

* The apertures of all stops or diaphragms supplied with Dallmeyer's lenses (portraits, views and landscapes) are so arranged that, counting from the *largest* to the next size *smaller*, the time of exposure is *doubled*. Stops marked X are exceptions to this rule, and require an exposure only *half as long* again as the *preceding larger* stop.

formed by removing the front lens, and using the back combination alone.

No.	Largest dimension of plate.	Dia. front combination.	Back focus.	Equivalent focus.	Price.
IAA	7¼ x 4½	7⁄8 in.	3½ in.	4 in.	\$37 00
IA	8½ x 6½	1¼ "	4⅝ "	5¼ "	45 00
I	12 x 10	1½ "	6¼ "	7 "	61 50
2	15 x 12	2 "	7½ "	8½ "	86 00
3	18 x 16	2½ "	11 "	13 "	115 00
4	22 x 20	3 "	14 "	15½ "	164 00



Dallmeyer's Rapid Rectilinear Lens.

Dallmeyer's Rapid Rectilinear Lens with central stops, for views of dimly lighted interiors, instantaneous out-door effects, groups, landscapes, architectural scenes, etc., etc. For the tourist, this is a truly valuable lens.

Size of view or landscape.	Size of group or portrait.	Diameter of lenses.	Back focus.	Equiv. focus.	Price. rigid set.
5 x 4 in.	4¼ x 3¼ in.	1 in.	5½ in.	6 in.	\$37 00
7¼ x 4½ "	5 x 4 "	1¼ "	7½ "	8¼ "	45 00
8½ x 6½ "	6 x 5 "	1½ "	10¼ "	11 "	57 50
10 x 8 "	8½ x 6½ "	1¾ "	12¼ "	13 "	74 00
12 x 10 "	10 x 8 "	2 "	15 "	16 "	90 00
15 x 12 "	12 x 10 "	2½ "	18 "	19½ "	123 00
18 x 16 "	15 x 12 "	3 "	23 "	24¾ "	164 00
22 x 20 "	18 x 16 "	3¾ "	28 "	30½ "	222 00
25 x 21 "	22 x 20 "	4 "	31 "	33½ "	262 00

4 x 5 furnished in matched pairs for stereo. work.

Dry Plates and Materials for Making the Negatives.

4 x 5 Developing Outfit.—Pocket ruby lantern; 1 dozen dry plates; 2 developing trays; oxalate potass.; pure sulphate of iron; hyposulphite of soda; bromide potass.; oxalic acid; sulphuric acid; alum; filtering paper; 2 funnels; 3 glass graduates; blue litmus paper; focussing cloth; scales and weights; bottle of negative varnish. Price, . . . \$5 25

4¼ x 6½ Developing Outfit.—Same items as above, but adapted to 4¼ x 6½ negatives. Price, . . . \$6 25

5 x 8 Developing Outfit. " " " " . . . 6 50

6½ x 8½ " " " " " " " " " " " " " " . . . 8 00

8 x 10 " " " " " " " " " " " " " " . . . 9 50

These outfits contain everything necessary for developing one dozen negatives, and chemicals, trays, etc., sufficient for several dozen more.

The "Stanley" Gelatino-Bromide Dry Plates.

We consider these plates the best for both the professional and amateur. For rapidity, uniform intensity, excellent printing qualities and cleanliness they are unexcelled.

We quote one from many testimonials:

"I have no hesitation in pronouncing the Stanley plates as the very best in the market, here or in Europe; being the

most extremely rapid plates extant, always reliable and possessing the highest artistic qualities, rendering the several gradations of light and shade, from the lowest depths of shadow to the highest point of light, in the most perfect and decided manner. Their printing qualities resemble the much admired wet plates. I do not intend to use any other for instantaneous work in the future. They are, undoubtedly, the plate for your detective camera.

"The lens used for the test was a Dallmeyer rapid rectilinear, with second smallest stop, and a Prosch shutter set at its greatest speed.

"Faithfully yours,

"R. GALLOWAY BILLINGER,

"Member of the Photographic Society of Great Britain."

Prices of Stanley dry plates after May 10 will be as follows:

3¼ x 4¼ \$ 45	10 x 12 \$3 80
4 x 5 65	11 x 14 5 00
4¼ x 5½ 75	14 x 17 9 00
4¼ x 6½ 90	16 x 20 12 50
5 x 7 1 10	17 x 20 13 00
5 x 8 1 25	18 x 22 15 50
6½ x 8½ 1 65	20 x 24 18 50
8 x 10 2 40	

We can also supply at manufacturers' regular list prices other well known brands of dry plates, such as the Eastman, Carbutt, Forbes, Cramer, St. Louis, etc., etc.

The Tropical Dry Plates.

The Tropical plate is the most important discovery yet made in dry plate photography. It can be washed in water of any temperature without frilling or having the film affected in any way. By this means the hyposulphite of soda used in fixing is much more thoroughly and easily eliminated.

When fixed, the negative can be *dried over a spirit lamp* in a few minutes.

This removes the only remaining difficulties in dry plate photography, and makes them available in the hottest climates.

Until further notice the price of the Tropical plates, so long and favorably known to the trade, will be as follows:

3¼ x 4¼ \$ 50	10 x 12 \$ 4 50
4 x 5 75	11 x 14 5 85
4¼ x 5½ 85	14 x 17 10 50
4¼ x 6½ 1 05	16 x 20 14 50
5 x 7 1 30	17 x 20 15 25
5 x 8 1 45	18 x 22 18 00
6½ x 8½ 1 90	20 x 24 21 00
8 x 10 2 80	

Dry Plate Safety Box.

In outward appearance resembling an ordinary negative box, though not so deep; but within, instead of grooves, it has a close-fitting cover lined with black velvet, so as to guard the plates against any possible reflections. These of any size up to 8 x 10 may be removed from the original packages, that should always be opened in the dark room, and safely kept in this box until transferred to the plate-holder.

Prices, 4 x 5, \$1 00; 5 x 8, \$1 25; 6½ x 8½ or 8 x 10, \$1 50.

Anthony's Pure Chemicals.

The chemicals required are simple, and prepared for use by the addition of water only, as per instructions in book on manipulation, which will be given with every outfit. As these chemicals are prepared and tested by ourselves, we furnish only what we know to be suited to the purpose.

Anthony's alkaline solution, 8 oz. bot., 40 cts.; Pt.,	\$0 80
Oxalate of potash, per pound (bottles extra),	40
Chemically pure iron, " "	50
Hyposulphite of soda, " "	08
Bromide of potassium, per ounce,	10
Oxalic acid, per ounce,	10
Non-actinic paper, 11 x 17, per sheet,	13
Filtering paper, per dozen sheets,	15
Pyrogallic acid, per ounce,	45
Blue litmus paper, (for testing acidity), per sheet,	05
Chloride of gold and sodium, per bottle,	50
Bicarbonate of soda, per lb.,	12
Acetate of soda, per ounce in bottle,	10
Carbonate of soda, per pound (crystals),	12
Sulphite of soda, per pound (crystals),	25

Camel's-Hair Blender.

1 inch English, each,	\$0 20	2 inch English, each,	\$0 30
1 1/2 " " " "	25	2 1/2 " " " "	40

Japanned Iron Developing Trays.

For 4 x 5 plates,	\$0 20	For 11 x 14 plates,	\$0 75
" 5 x 8 " "	25	" 14 x 17 " "	1 00
" 6 1/2 x 8 1/2 " "	30	" 18 x 22 " "	2 00
" 8 x 10 " "	40	" 20 x 24 " "	2 50
" 10 x 12 " "	50		

Anthony's Developing Bottle.

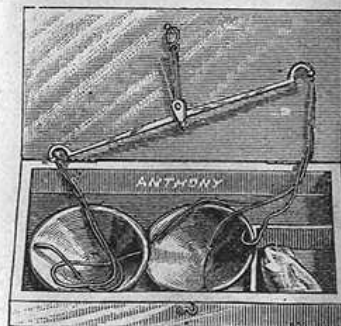
This developing bottle is a great convenience to the amateur or professional photographer, and will soon save its cost in the quantity of developer economized.



Quarts,	\$0 75	1/2 gal.,	\$1 00	1 gal.,	\$1 25
-------------------	--------	---------------------	--------	-------------------	--------

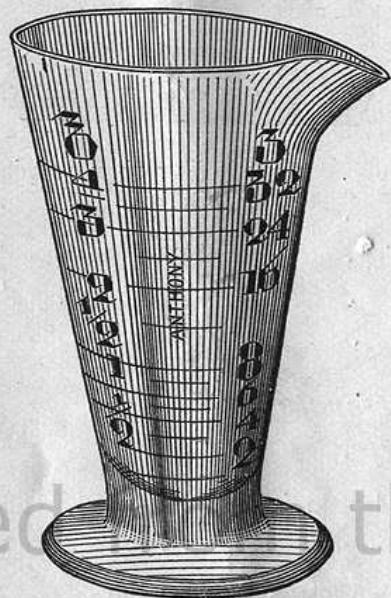
Scales and Weights.

These are made for weighing small quantities only—grains, scruples, and drams. With French weights they are equally useful for weighing grams, etc. Price, in wooden box, with a set of apothecaries' weights, 90 cts.



Anthony's Superior Graduates.

Prices: Minim, 30 cts.; ounce, 25 cts.; 2
ozs., 30 cts.; 3 ozs., 36 cts.; 4 ozs., 42 cts.;



6 ozs., 48 cts.; 8 ozs., 54 cts.; 12 ozs., 72
cts.; 16 ozs., 90 cts.; 24 ozs., \$1 20.

Ordinary Glass Graduates.

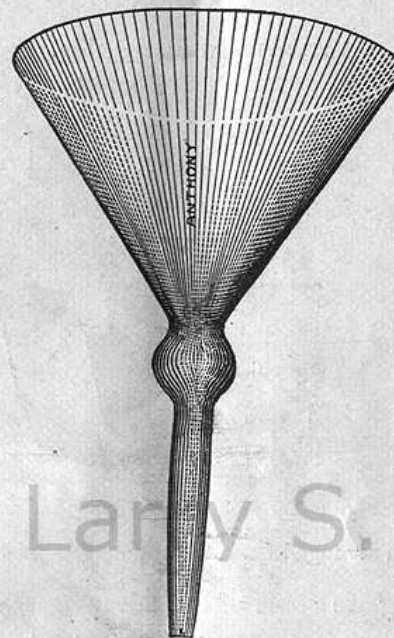
Minim, each, . . .	\$0 25	4 ounces, each, . . .	\$0 35
1 ounce, " . . .	20	8 " " . . .	60

Ordinary Glass Funnels.

1/4 Pint, each, . . .	\$0 10	Pint, each, . . .	\$0 15
1/2 " " . . .	12		

Agate Ware Funnels.

1/4 Pint, each, . . .	\$0 20	Pint, each, . . .	\$0 35
1/2 " " . . .	25	Quart, " . . .	50



Anthony's Combined Funnel and Filter.

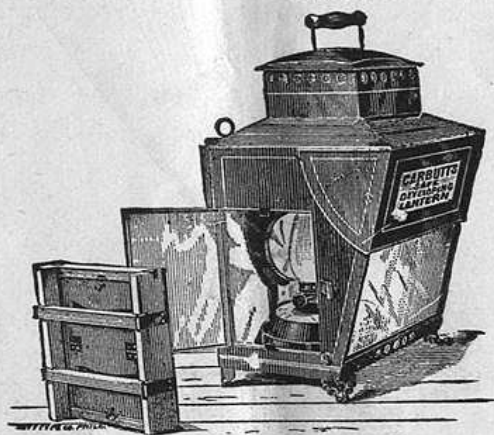
In this combination of funnel and filter the bulb retains the filtering cotton in such a manner as to obviate the difficulty experienced in the ordinary funnel from the cotton being compressed too tightly. A glance at the cut will readily explain its advantages.

The sizes and prices are as follows:

Pints, each,	\$0 50
Quarts, "	62
1/2 Gallon, each,	1 00

Carbutt's Multum in Parvo Lantern.

PATENTED APRIL 25, 1882.

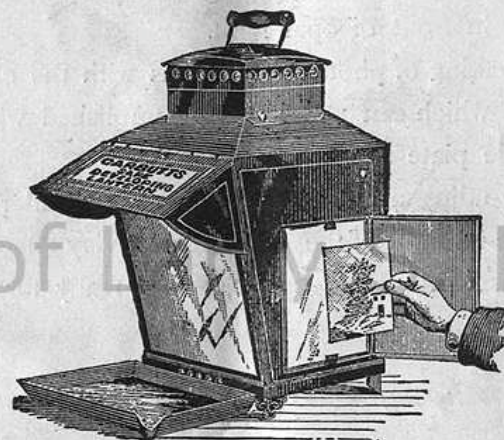


Lantern arranged for making positives by contact.

The following are some of the advantages possessed by this Lantern: It saves your eyesight. It is simple and easy to manage, nothing complicated, yet has three separate and distinct forms of light. It is adapted for the use of either oil or gas; is about nine inches square by fourteen high, with eight by ten deep ruby glass in front. Each lantern is provided with a coal-oil lamp, with improved patent burner and silvered reflector, which may be revolved in any direction and operated from the outside. By removing the revolving lamp bed, a hole will be found through which a gas burner can be introduced.

It can be used for seven or more different operations in photography, several of which have never been combined in any one lantern, to wit:

1. A safe light for the preparation of gelatino-bromide emulsion.
2. A safe light for the coating of gelatino-bromide plates.
3. A safe light for developing the most sensitive plates, while for preparing developer or doing other work the room can be instantly flooded with white light and as quickly



Lantern arranged for developing, and after fixing, examining negatives by opal light.

changed to the red, giving abundance of light by which to develop the largest sized plates used. The adjustable hood effectually shields the eyes from the glare of the red light, a matter of the greatest importance to those having a large number of negatives to develop, or other work to perform necessitating red light.

4. An opal light by which to examine negatives or positives after fixing, enabling the operator to judge of their qual-

ity, thereby avoiding the necessity of leaving the dark room in search of white light.

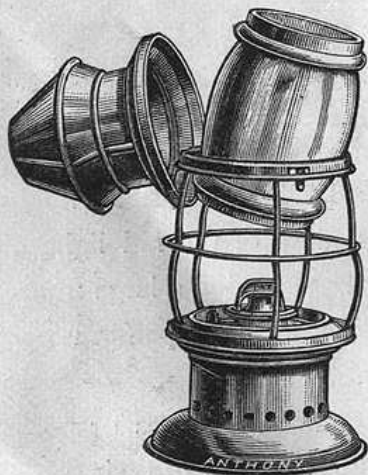
5. A clear transparent light for making positives on glass (gelatino-bromide). This feature is a valuable one; any photographer can materially add to his revenue by making these most beautiful products.

6. The making of enlarged negatives from gelatine positives, placed in front of opal light.

7. The making of photo-micrographs with the clear, transparent light, which can readily be accomplished with the gelatino-bromide plate and the microscope.

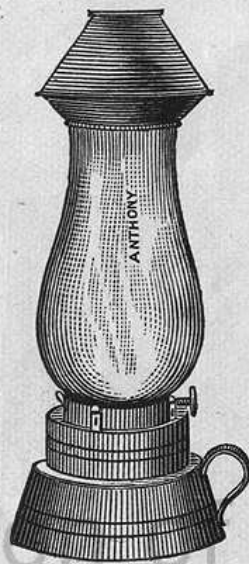
8. By the adjustment of condensers and holder for slides and objective in front of the clear light, a very effective magic lantern is formed. Price \$6 00, boxed ready for shipment.

Anthony's Dry Plate Lantern



Has separable parts, and all are easily and quickly adjusted. There are no hinges to become dislocated nor armholes to break. It is easily lighted and extinguished; it requires but little care to keep clean; it can never get out of order; it takes but little oil and it affords a good light. Price, \$1 50.

Oil Lamp with Ruby Chimney.



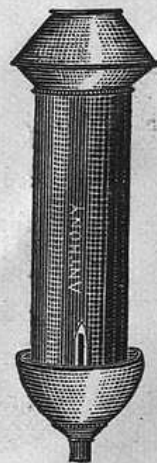
The above illustration represents the new oil lamp for use in developing gelatino-bromide plates. It is expressly made for the purpose, and is intended for use with kerosene oil. The chimney is of ruby-colored glass of the proper and most desirable tint, and surmounted with a movable top to intercept the upward radiation of the light of the lamp.

Price, \$1 50 each.

Gas Burner with Ruby Chimney.

By the annexed wood-cut it will be seen that the patent argand burner has been so modified as to intercept the downward radiation of the light of the lamp; protection above is provided in the same manner as with the oil lamp. The chimneys of both gas and oil lamps, it should be particularly remembered, are not made of the ordinary ruby glass, but what is known in the trade as copper-flashed.

Price of the ruby gas burner and chimney, \$2 50.



Anthony's Climax Dark Room Lantern.
PATENTED.

It has three large illuminating surfaces and reflector. The glass is of the correct non-actinic hue, and outside of it are extra sashes, in which additional lights of any desired tint may be slid. It is perfectly safe, and by all odds the most comfortable kerosene lantern to work by yet seen.

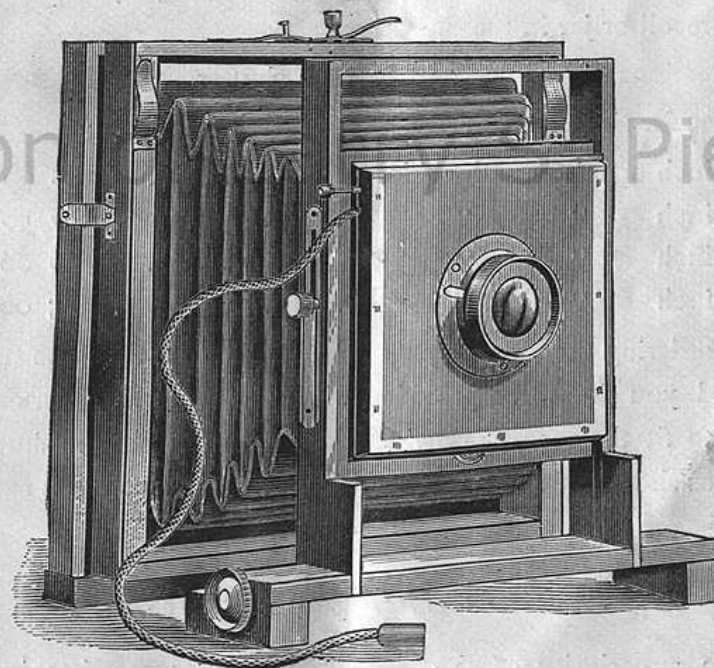
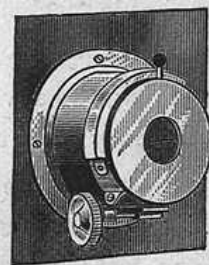
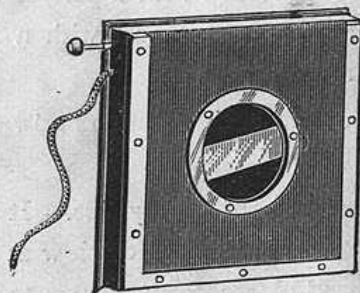
The price is \$2 00.



Anthony's Instantaneous Drop

Consists of two thin pieces of wood, each having a hole cut into it of the same size, and so arranged that when one piece is placed upon the end of the tube (which fits into the circular opening), the other piece can be made to slide up and down directly against it. Prices for 4 x 5, \$1 25; 5 x 8 and 6½ x 8½, \$1 50. Larger sizes to order.

The Hitchcock Photographic Shutter.



This shutter is adapted for all photographic purposes. It is capable of giving a more rapid exposure (calculated at

about $\frac{1}{500}$ part of a second) than any heretofore known; also, an exposure prolonged at will. It is provided with a perfect yet simple mechanism for making any exposure and with a flexible cable to operate at any desired distance.

Among the advantages possessed over all other shutters now in use may be enumerated the following:

1st.—It can be attached to the front board of any size. It works without friction and is noiseless. It is rapid or slow at the will of the operator. It opens and closes from center to center, thus excluding the diffused or scattering rays. There is no recoil or jar in the operation.

Directions for use accompany each shutter.

Price for single instrument attached to head-block:

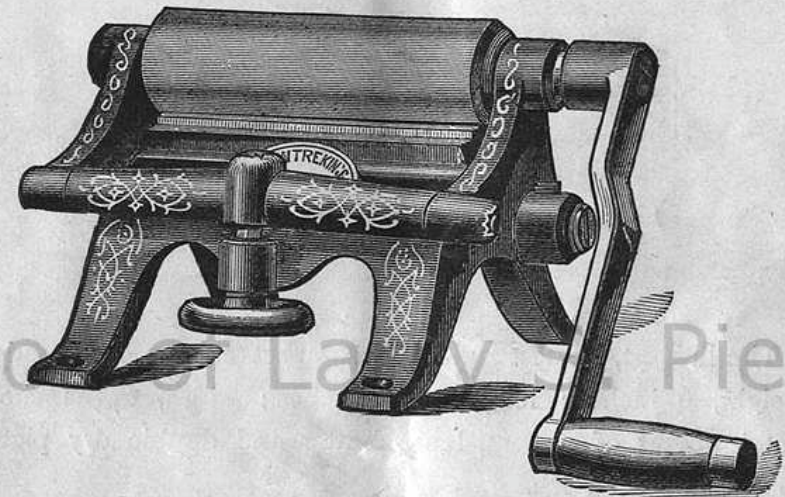
5½ inch opening, with cable,	\$8 00
4½ inch " "	7 50
2½ inch " "	6 00
1½ inch " "	5 00

In ordering the above style of shutter, if more than one tube is used, you should be provided with a separate slide for each tube to fit the grooves provided for that purpose on shutter front as shown in cut. Extra slides, . . . 50 cents each.

Entrekin's Eureka Burnisher.

The superiority of the Eureka Burnisher consists in its cheapness, simplicity and effectiveness, and the impossibility of the machine getting out of order.

The Burnisher can be heated with any kind of lamp—alcohol, coal oil, or gas. During the process of heating, the roll can be turned back from the burnishing tool, thereby preventing the condensation of moisture forming on the roll or tool.



To dress the burnishing tool, the roll is simply turned back from the tool in an instant. No hot plates to handle, and consequently no burnt fingers.

The machine has also the patent removable burnishing tool, which is a decided advantage.

6 inch Roll, . . .	\$15 00		10 inch Roll, . . .	\$25 00
--------------------	---------	--	---------------------	---------

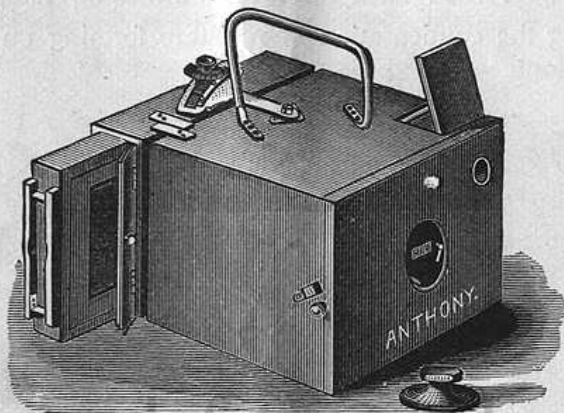
Glass Stirring Rods.

8 inch, each, . . .	\$0 10		15 inch, each, . . .	\$0 20
12 " " . . .	15		18 " " . . .	25

Both ends are glaze finished.

Schmid's Patent Detective Camera.

PATENTED JAN. 2ND. 1883.



The lightest, neatest and most compact camera ever made. Height, 6 inches; length, $9\frac{1}{2}$ inches; width, $6\frac{3}{4}$ inches. Total weight of camera, lens, shutter and double dry plate-holder, only $3\frac{1}{8}$ lbs.

This camera is focussed once for all by means of a ground glass which slides in the place to be afterward occupied by the double dry plate-holder, for objects of various distances, and the position of the focussing lever on top of the camera is marked for each distance. After this the ground glass may be entirely dispensed with, as it is then only necessary to estimate the distance of the object to be photographed and move the focussing lever to the mark corresponding to that distance, when the camera will obviously be in focus.

The small lens in the upper left hand corner serves to throw the picture on a piece of ground glass on the top of the cam-

era, thus showing the position of the image on the plate. When the picture appears in proper position on this ground glass, it is only necessary to touch the button on the right of the camera and the exposure of the plate is instantly made, its development being afterward accomplished in the ordinary manner.

The slide is then replaced in the plate-holder, which, being reversed, the shutter reset and the other slide drawn out, everything is ready for the next shot.

Price complete, including camera, instantaneous lens, shutter and one double dry plate-holder for plates of $3\frac{1}{4} \times 4\frac{1}{4}$ inches, \$55 00. Additional double dry plate-holders, each, \$2 00.

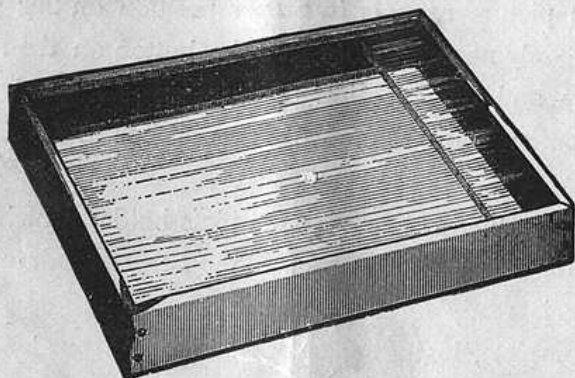
Anthony's Glass Developing Trays.

Size, 5 x 7, each,	\$0 50	Size, 7 x 9, each,	\$0 75
" 5 x 8, "	60	" 8 x 10, "	1 12 1/2
Size, 10 x 12, each,			\$1 87 1/2

Porcelain Developing Trays.

(The dimensions given are for inside the bottom of the tray.)

	Shallow.	Deep.		Shallow.	Deep.
5 x 7,	\$0 44	\$0 62	8 x 10,	\$0 82	\$1 00
7 x 9,	66	82	10 x 12,	1 32	1 66

Glass Bottom Dry Plate Developing Trays.

These trays are selling rapidly. They are made of hard wood, lined with chemical proof substance, with chamber at one end to inspect the progress of development of plate. Raise the tray and look through it; if not complete, return the tray to its former position and the developer flows back.

For 5 x 7 plate, each,	\$1 10
“ 5 x 8 “ “	1 10
“ 8 x 10 “ “	1 75
“ 11 x 14 “ “	2 75

Larger sizes made to order. They are now made with two glass buttons in the bottom, to overcome suction.

Anthony's New Varnish for Gelatine Dry Plate Negatives.

Full directions for use on each bottle.

Price, per 6 oz. bot., \$0 40; pint, \$1 00; quart, \$1 90.

Anthony's New Transparency Dry Plates.

For lantern slides, window transparencies, micro-enlargements, contact printing, duplicating negatives, and line work for photo-engraving. They work in half the time of the old collodion plates, and require no intensifying. Made in all sizes from 8 x 10 down to $3\frac{1}{4} \times 4\frac{1}{4}$. Send for circular and read what is said of them. Prices :

$3\frac{1}{4} \times 4$, per dozen, .	\$0 70	5 x 7, per dozen,	\$1 80
4 x 5 “ .	1 05	5 x 8, “	2 00
$4\frac{1}{4} \times 5\frac{1}{2}$ “ .	1 10	$6\frac{1}{2} \times 8\frac{1}{2}$, “	2 50
$4\frac{1}{2} \times 6\frac{1}{2}$ “ .	1 35	8 x 10, “	3 75

Transparency Frames

Are made with rings on the side to make them hang horizontally, or with rings on the end to allow them to hang vertically. In ordering, please specify which pattern is desired.

4 x 5 inch Transparency Frames, each,	\$0 20
$4\frac{1}{4} \times 5\frac{1}{2}$ “ “ “ “ .	24
5 x 8 “ “ “ “ .	26
$6\frac{1}{2} \times 8\frac{1}{2}$ “ “ “ “ .	30
8 x 10 “ “ “ “ .	36
10 x 12 “ “ “ “ .	60
11 x 14 “ “ “ “ .	75

Patented Transparency Frames.

These are made with one side removable, enabling the transparency to slide into the frame easily and without danger

of breaking. They are also made to hang either vertically or horizontally.

4 x 5 inches, each, \$0 28	8 x 10 inches, each, \$0 48
5 x 8 " " " 34	10 x 12 " " " 75
6½ x 8½ " " " 38	11 x 14 " " " 90

Carbon Transparencies.

A choice selection of attractive subjects from steel plate engravings.

8 x 10 in patent nickel-plated frames, each, \$2 00
11 x 14 " " " " 3 50

Ground Glasses for Transparencies.

4 x 5, each, \$0 10	6½ x 8½, each, \$0 26
4¼ x 6½, " 13	8 x 10, " 32
5 x 8, " 18	

Etched Glasses for Transparencies.

Fancy borders, 8 x 10, with opening of 5¼ x 7¼ inches, each, \$0 55
Fancy borders, 11 x 14, with opening of 6¼ x 9½ inches, each, 1 00

Orange and Ruby Glass.

For Dark Rooms.

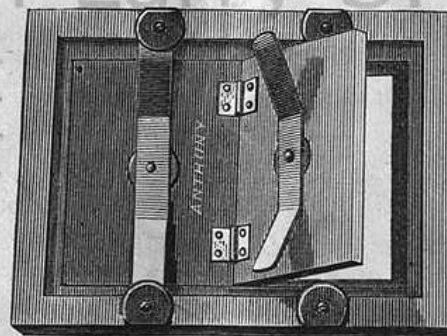
8 x 10, per light, \$0 30	13 x 16, per light, \$0 70
10 x 12, " 50	12 x 20, " 80
11 x 14, " 55	

Printing Outfits.

4 x 5 Printing Outfit.—2 dozen 4 x 5 sensitized albumen paper; blue litmus paper; chloride gold (A); bicarbonate of soda (B); acetate of soda (C); chloride of sodium (D); 1 lb. hyposulphite soda; 1 printing-frame, 4 x 5; 1 4 x 5 japanned developing tray; ½ oz. graduate; 1 5 x 7 porcelain tray (deep); 1 jar of paste; 1 one inch paste brush; 1 glass pattern, 4 x 5; 1 Robinson straight trimmer; 24 sheets 6½ x 8½ cardboard. Price, \$4 75.

4¼ x 6½ <i>Printing Outfit as above,</i> Price, . . .	\$5 75
5 x 8 " " " " . . .	6 00
6½ x 8½ " " " " . . .	6 75
8 x 10 " " " " . . .	7 75

Printing Frames.



These are provided with brass washers, that greatly preserve the wood-work from otherwise constant friction.

Size, 3¼ x 4¼, each, \$0 45	Size, 5 x 8, each, \$0 60
" 4 x 5, " 45	" 6½ x 8½, " 65
" 4¼ x 6½, " 55	" 8 x 10, " 75

Anthony's Patent Rapid Printing Paper.

Requires Neither Toning nor Sunlight.

This paper being prepared with the same substance as used on the gelatine dry plates, it requires no other chemicals for its development than those employed in the development of the negative, which is a great convenience in travelling. It must consequently always be used in a room free from actinic light.

GLOSSY.

Roll of five sheets, 12½ x 19 inches, extra heavy,	\$1 75
Per package of 1 dozen, 8 x 10 sheets, . . .	1 50
" " 1 " 6½ x 8½ " . . .	1 10
" " 1 " 5 x 8 " . . .	75
" " 1 " 4 x 5 " . . .	40

PLAIN.

Per box of 12 sheets, each 4 x 5 inches, . . .	40
" 12 " " 5 x 8 " . . .	75
" 12 " " 6½ x 8½ " . . .	1 10
" 12 " " 8 x 10 " . . .	1 50
Per roll of five sheets, measuring 11 x 18 inches,	\$1 50
" one sheet, " 29½ x 393	18 00
" " " " 29½ x 196	9 00
" " " " 29½ x 98	4 50

Anthony's Extra Glossy Ready Sensitized Albumen Paper.

This paper was expressly manufactured for and introduced by us to give to those who have not the skill, time, inclination or appliances to sensitize photographic paper preparatory

to printing, an article of the finest quality and of uniform sensitiveness.

4 x 5 in., in light-tight boxes of 2 doz., per box	\$0 40
5 x 8 " " " 2 " " "	75
6½ x 8½ " " " 2 " " "	1 00
8 x 10 " " " 2 " " "	1 50
18 x 22 " " " " " "	per doz.. 2 75

To save loss boxes are not broken.

E. A. Ferro-prussiate Paper, for Making Blue and White Pictures.

This requires no chemicals in its development. It is merely printed for about ten minutes in the sunlight and then washed thoroughly in clean water.

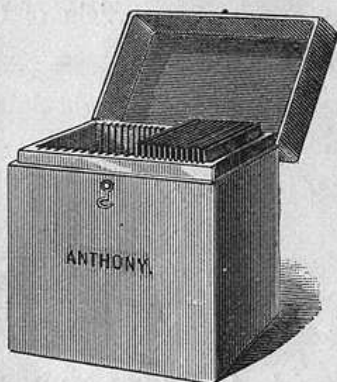
This paper is extremely simple in its manipulation, and therefore very convenient for making proofs from negatives. It is also adapted for the reproduction of Mottoes, Plans, Drawings, Manuscript, Circulars, and to show representations of Scenery, Boats, Machinery, etc., for an engraver to copy from. The rapidity with which a print can be made with this paper is, for numerous purposes, and to men in some occupations, a very great recommendation in its favor.

4 x 5 in., in light-tight boxes of 3 doz., per box	\$0 45
5 x 8 " " " 3 " " "	90
6½ x 8½ " " " 3 " " "	1 20
8 x 10 " " " 3 " " "	1 50

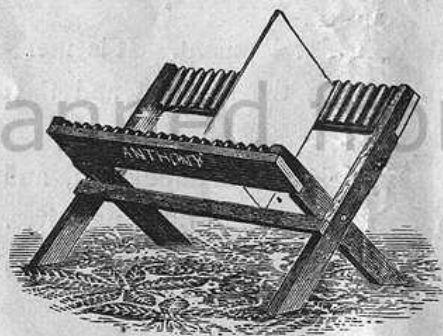
To save loss boxes are not broken. In full rolls of 11 yards each, 29 inches wide, \$5 00 per roll.

Negative Boxes.

For storing negatives. They are smoothly made, with grooves each side, and have nicely rounded corners. Prices, holding 24 plates, each, 4 x 5, 65 cents; 5 x 8, 85 cents; 6½ x 8½, 95 cents; 8 x 10, \$1 10.

**Anthony's Folding Negative Rack.**

Anthony's Folding Negative Rack, for holding plates while drying; when not in use it can be folded and hung on a nail. Price, 50 cents each.

**E. A. Compound Focussing Glass.**

For fine work the E. A. compound focussing glass is the best. It has a double compound lens. The price is \$2 50.

Amateurs' Card Stock.

PLAIN CARDBOARD.

No. 2.	6½ x 8½ per 100,	\$1 00
" 2.	8 x 10 "	1 50
" 2.	10 x 12 "	2 25

PLAIN CARDBOARD WITH PLAIN GILT SQUARE BORDERS.

No. 2.	6½ x 8½, opening 4 x 5, per 100,	\$1 88
" 2.	9 x 11, " 5 x 8, "	2 58
" 2.	10 x 12 " 6 x 8, "	3 38

BLACK CARDBOARD.

No. 13.	Imperial 6½ x 8½, per 100,	\$3 80
" 13.	" 6¾ x 9¾, "	4 30

CARD AND CABINET MOUNTS, ETC.

No. 5.	Round Corner Card Mounts, per 100,	\$0 40
" 5.	" Cabinet " "	90
" 9.	" 4 x 5 " "	90
" 9.	" Boudoir " "	1 80

BLACK CARDBOARD WITH GILT BEVELLED EDGES.

No. 43.	Card size, per 100,	\$1 05
" 43.	Cabinet size, per 100,	2 00
" 26.	4 x 5 size,	2 10
" 26.	Boudoir, 5¼ x 8½, per 100,	3 40

STEREOSCOPIC MOUNTS, No. 5, PER 100.

3½ x 7,	\$0 70;
4 x 7,	\$0 80;
4¼ x 7,	\$0 85;
4½ x 7,	\$0 95.

Complete catalogue of card stock sent on application.



A New Paste for Mounting Photographs.

After a long series of experiments our Mr. H. T. Anthony has succeeded in making a paste which is far superior to any thing of the kind in market. It is warranted not to ferment, become sour, or mouldy, and never to become offensive. It will remain moist, even after much exposure to the air, and it possesses a pleasing pearly color. Its adhesive properties are unsurpassed, and, like starch, it leaves no stain upon the card mount. If found too thick it can be readily thinned by the use of cold water, and it will keep for any length of time, no matter what may be the temperature.

½ pint jar, . . .	\$0 25	½ gallon, . . .	\$1 00
1 " " . . .	45	1 " " . . .	2 00
1 quart jar, . . .	65	5 " keg, . . .	3 00
1 pint bottle, . . .	30	10 " " . . .	5 50
1 quart " . . .	50		

Materials for Mounting.

Flat bristle paste brush, 1 inch wide, . . .	\$0 15
100 Carte de visite mounts, fine quality, . . .	30
50 Cabinet mounts, fine quality, . . .	38
8 x 10 White cardboard, fine quality, per doz.	25
Glass pattern for trimming cartes de visite, . . .	25
" " " cabinets, . . .	50
" Stereo. cards—square or arch, each, . . .	40
" Victoria cards—oval, arch, or R. C., ea., . . .	40
" 4 x 5 inches, each, . . .	50
" 5 x 8 " " . . .	1 00

Rubber Gloves.

Just the thing to keep pyrogallic acid off the hands of those who prefer the pyrogallic developer.

Sizes, ladies' long, Nos. 7, 8 and 9, per pair, . . .	\$1 50
" " short, " " " " . . .	1 25
" gents' long, " 12, 13 and 14, " . . .	1 65
" " short, " " " " . . .	1 35

Rubber Finger Cots.

Price, assorted sizes, \$1.00 per dozen.

Robinson's Straight Trimmers.

For trimming photographs, each, \$0.50.

E. A. Wide Angle Lens.

This lens being of short focus and of wide angle, and made on the rectilinear principle, is a useful one for architectural photography, and is not equalled at the price by any in market. Those who cannot afford *the best*—the Dallmeyer—will find this an excellent substitute.

No. 2, 5 x 8, . . . \$17 50 | No. 4, 10 x 12, . . . \$25 00
 No. 3, 8 x 10, . . . 20 00

Ebonite Tray.

It is easily kept clean, and has a polished surface of high finish. Two slightly raised ridges on the bottom prevent the plate from adhering to the tray.



No. 1, for 1/4 size, . . . \$0 25 | No. 5, 6 1/2 x 8 1/2 size, 0 80
 No. 2, 1/2 and 4 x 5 size, 0 27 | No. 6, 8 x 10 size, . . . 1 30
 No. 3, 4 1/4 x 6 1/2 size, 0 40 | No. 7, 10 x 12 size, . . . 2 40
 No. 4, 5 x 7 and 5 x 8 size, 0 60 | No. 8, 11 x 14 size, . . . 3 20

THE

FAIRY CAMERA.

It has long been our desire to place before the public a camera that would at once embrace these most necessary requirements—portability, compactness and strength, combined with beauty and accuracy of working.

Hitherto the nearest approach to this has been the "Novel" camera, which for a time seemed to be everything that could be desired. But urgent calls for something still better were frequently made, and we therefore devised the FAIRY CAMERA, by far the most attractive and elegant piece of apparatus of its kind ever offered. In presenting it we invite attention to the following advantages it possesses over all others.

Strength.—They are put together as rigidly as wood and metal will admit of, and are therefore *perfectly* rigid.

Compactness.—They occupy less space than any other view cameras of the same capacity, and the plate-holders actually require little more than one-half the room of the lightest of any others in use. The plate-holders are made of hard wood, with metal carriers for the plates, and fitted with all the later improvements.

Portability.—The small compass to which they may be reduced render them in this respect incomparably superior to any. They are packed in canvas-covered wooden cases—and each double plate-holder has its own compartment. The cover of the case telescopes over its body.

Several new features have been availed of in the construction of this camera, to wit: The bed may be instantly rendered rigid, *without the use of screws*, by means of a brace of hooks that hold the two sections of the bed with great firmness.

Secondly.—The rabbit commonly found on the plate-holder is dispensed with, and instead it is placed on the camera, thus saving the otherwise additional weight rendered necessary for twelve such rabbits when made on the plate-holders (two on each of the six usually carried), and the no inconsiderable item of three-quarters of an inch in bulk.

Third.—The Camera is focussed with a long, continuous metallic rack, cog wheel and pinion, the latter being held firmly in position by a binding screw.

The ground glass swings backward in its frame, like that in the regular Novel Camera, and is held tightly in position by metallic spring corners. When windy, this is a decided advantage.

The Fairy Camera is made in finely polished mahogany, the metal work being nickel-plated, thus making it the most elegant and perfect camera known.

At present they may be had in four sizes, as follows:

Including one Double Dry plate Holder.		Including six Double Dry plate Holders.	
4 1/4 x 6 1/2, without stereo. attachments,	\$40 00	4 1/4 x 6 1/2, without stereo. attachments,	\$52 00
5 x 8, " " " "	42 00	5 x 8, " " " "	55 00
5 x 8, with " " " "	42 00	5 x 8, with " " " "	55 00
6 1/2 x 8 1/2, " " " "	45 00	6 1/2 x 8 1/2, " " " "	65 00
8 x 10, " " " "	50 00	8 x 10, " " " "	75 00

Fairy Plate Holders only.

4 1/4 x 6 1/2, each,	\$3 00	6 1/2 x 8 1/2, each,	\$5 00
5 x 8, " " " " " "	3 00	8 x 10 " " " " " "	6 00

Naturally, those without stereoscopic attachments are still lighter and a trifle more compact than those with, and may be preferred by persons who desire to make single portraits or views only.