

THE
Amateur * Guide * in * Photography.



T.B.T & D.P.Co

A CONCISE AND PRACTICAL WORK FOR THE BEGINNER.

Sent Postpaid for 20c. by all Dealers. Bound in Cloth, 40c.



PUBLISHED BY THE BLAIR CAMERA CO.

BOSTON, MASS.

PHOTOGRAPHIC
APPARATUS

MANUFACTURED BY

THE
BLAIR
CAMERA
COMPANY.



G. R. SELEE,

56 Bromfield Street,
BOSTON, MASS.

PRICE LIST
AND
ILLUSTRATED
CATALOGUE.

IN writing a preface to the last edition of our ANNUAL CATALOGUE we express ourselves as follows: "At the date of last year's issue, we prophesied that the increase in our facilities was at an end for the year 1883, but the demand for our goods has been such that we were compelled to almost double our manufacturing capacity.

Endeavoring to avoid being over-flushed with success, we have spared no expense in improving our goods and designing new styles, and are gratified to know that they have now won their deserved popularity. The greatest care being exercised in the selection of materials used, and only skilled workmen being employed, the result could not be otherwise.

That we shall have the same story to tell you in our fourth edition (1885), we think there is every prospect. Youthful vigor combined with wise management is our boast, and realizing that even the strongest can be overthrown, we shall ever aim to convince you by our dealings, that we are your faithful servants." We now at this date find the intervening months have fulfilled our prophesies. While other manufacturers have striven to enlarge as much as possible their catalogue, we have striven to condense where possible, without narrowing our usefulness; but we have in our factory and agencies, the largest stock of light weight apparatus in the world.

The gold dollar occupies less space than does the silver of like value, and we have the strongest belief that you will find in this volume (which you can conveniently carry in the pocket) at least as much honest, and desirable information as can be found in any of its more bulky peers.

Notwithstanding our claim to carry so large a stock, it should be borne in mind that an unexpected demand on any one line often exhausts the stock before a new lot can be made ready for the market; therefore we would strongly urge customers to give their orders as far in advance of their actual needs as practical, and we would especially ask attention to this matter when goods are to be made to order.

THE BLAIR CAMERA CO.

BOSTON, 1886.

LP 1171

ADVICE TO BEGINNERS TO SAVE CORRESPONDENCE.

IT is a difficult task to advise the intending purchaser in the pages of a Catalogue, what to buy, as the conditions under which the operator will be likely to labor should govern this largely.

One thing more than all others which governs this selection is the amount of money the purchaser desires to invest as a first-class instrument will always do work which the cheaper grades will, while the cheaper grades will not do that which the first-class are especially designed to do.

In the higher grades of instruments there are also qualities which especially recommend the different styles for specific purposes, for instance, the Champion and the Improved Reversible Back Cameras.

The Champion was built to meet a demand for a Camera having all the adjustments moveable with Rack and Pinion, to accomplish this we were compelled to make the Camera heavier and stronger, and it is recommended where weight is not so much to be considered as facility of working the different movements; but where the Camera is to be carried much the advantages gained by the Rack and Pinion adjustments will not compensate for the labor in carrying the extra weight. Lightness and Compactness are qualities which when carried beyond correct proportions are antagonistic to rigidity and strength. Especially so when the users of Camera and tripod demand that there must be no braces or tightening screws to adjust, while the apparatus must possess every known improvement with the capability to do all kinds of work.

In the manufacture of our "Improved" and "Perfect" Reversible Back Cameras fitted with Feather Weight Holder and Feather Weight Tripods, we feel that we have approached as near as is safe to that line where strength with rigidity and lightness with compactness refuse to combine unless encumbered by numerous braces and supports; this the average American will not submit to.

The so called pocket camera have for this reason met with but little favor in this country further than their novelty has given them. Our advice to those who feel warranted in the investment is to purchase an "Improved" or "Perfect" R. B., they are the lightest and most

compact practical cameras made (Lucidograph excepted) and have an established market value if you should ever care to dispose of one.

The Lucidograph is an outfit especially for outdoor and general work, compactness and lightness being an important feature, and to secure rigidity we introduce the brace referred to (but one however) owing to it reversing on the tripod. It is not as convenient to use as the R. B. Camera but it has no equal for compactness in a Camera possessing the advantages it does, we can therefore do nothing better than advise the purchase of one where the purchaser desires a less expensive outfit than one embracing a Reversible Back Camera.

TRIPODS.

On no piece of apparatus connected with photography, has there been more experiments tried, and thought expended to improve and condense, than on this important yet bothersome article. Yet the most satisfactory are to-day made on the principle of those constructed ten years ago. We now have three styles, the Feather Weight being the lightest of the two adjustable ones, and the English folding the most rigid for its weight. The Feather Weight is sufficiently rigid for all sizes of Camera up to $6\frac{1}{2}$, $8\frac{1}{2}$, above which the Combination should be used.

The English Folding Tripod is a less expensive form yet very rigid and easily set up but does not possess the advantage of being adjustable to different heights. It is sufficiently rigid for all sizes of Cameras up to 8 x 10.

PLATE HOLDERS.

We list three styles of this accessory to the Camera to suit the most critical. The English being the most desirable in all sizes above 8 x 10, and both this pattern and the Blair Patent being somewhat stronger, but the Feather Weight are much the lighter and for small sizes the most desirable.

As the holders cannot be filled or the Plates which they carry changed except in a dark room, it will be apparent that a liberal supply of them are desirable.

"For convenience and safety would advise the novice to defer removing them from the light-tight-box until after dark, when by the

aid of a suitable light the operation can be carried on without the trouble of darkening windows etc." (See amateur guide page 21.)

Six Double Holders carry 12 plates, which will be quite as many as will be likely to be used in a days outing, and after nightfall the "exposed" plates can be removed and fresh ones put in ready for the next day.

LENSES.

To advise on the selection of a lens is most perplexing, especially so in our position when we daily see evidences of the beautiful working qualities of each of the standard makes, and as there is such a difference of opinion regarding the different makes of the higher grade of lenses, we refrain from recommending any special make, further than to say we list only the most celebrated, and are ready to warrant any quoted in this list.

When requested we will send the manufacturing agents circulars which set forth the advantages and qualities of each or put intending purchasers in direct communication with the agents who will answer all necessary questions.

For landscape viewing, it is a well-conceded fact that there is nothing better than a Single Achromatic Lens, as the expression of perspective is natural, and it gives exceedingly uniform definition. We have seen many landscape pictures made with them which were all that could be asked for by the most critical; also many interiors, and even portraits, which were in themselves gems; but by the curving of straight lines on the outer edge of the picture, they are unfit for this latter class of work. The same curving occurs in landscape views, but as the works of nature are not as a rule comprised of straight lines, the distortion is unnoticeable. The well known T. B. T. & D. P. Co's lens possess all the qualities a lens of this class is capable of embodying and the work we have made and seen made with them has been marvelous.

• The Lucidograph lens is composed of larger glasses and thereby more rapid. On well lighted subjects it works admirably for instantaneous exposure.

PLATES.

On this subject we might repeat the substance of our remarks on the selection of a high grade of lens and thus express our sentiments. Our advice is, buy none but those of acknowledged standard unless warranted by houses in which you have the utmost confidence, as there is no article sold which the purchaser buys so much on his faith in the seller as this; although we list but two brands, any of the standard will be supplied at the prices quoted. If you are successful with a brand avoid changing unless you wish to experiment.

DEVELOPING OUTFITS AND DEVELOPERS.

For those who possess the knowledge or have a friend to advise them, the preferable way is to select such chemicals and accessories as judgment dictates to answer your purpose. For those who leave the matter to us we present two outfits: one (the least expensive) being the bare necessities to enable one to develop a plate successfully, the other embraces all that is likely to be required, neatly and conveniently arranged.

Any of the standard formulas for development will produce most any result which can reasonably be desired, and the wise will adhere to a formula which they understand working with success.

PRINTING AND PRINTING OUTFITS.

The printing and toning of the picture will probably be found more perplexing to the beginners than all the other manipulations combined, but it is one of the most fascinating, and it is therefore commendable to the amateurs to practise this interesting branch, if he has the time in which to do it at his command.

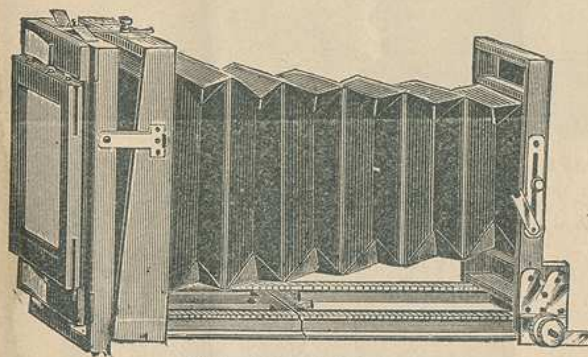
The bare necessary articles for printing from a negative are, a printing frame, sensitized paper, "Hub" toning solution and Hypo-sulphite of Soda; dishes in ordinary domestic use can be made to answer the purposes, but those made for this purpose are as a matter of course more convenient. We present two outfits to select from.

BLUE PRINTS.

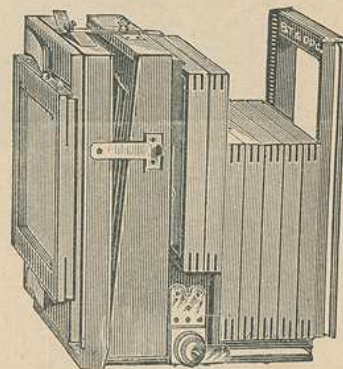
Printing by using the Ferro Prussiate Paper, or as we have named it "Roman Blue Paper," is a most convenient and simple method of making proofs of negative; in fact many have whole collections made by this process, and are admired not only for their novelty but beauty. A printing frame and paper are all that is necessary to make these prints from the negative. The only thing to be done after the print is taken from the frame is to thoroughly wash in water.

BLAIR'S IMPROVED REVERSIBLE
BACK CAMERAS.

Although not as expensive a Camera as the Champion (a description of which follows,) yet for general work where it is likely to be carried much, it is more desirable, as it is much lighter and more compact. The fact that there are over a thousand in use, with the demand increasing every month, speaks more for their good qualities than would volumes from us. They are made entirely of the best selected mahogany, seasoned several months, are highly polished and trimmed with nickel mountings.



Nos. 1500-1505 EXTENDED.

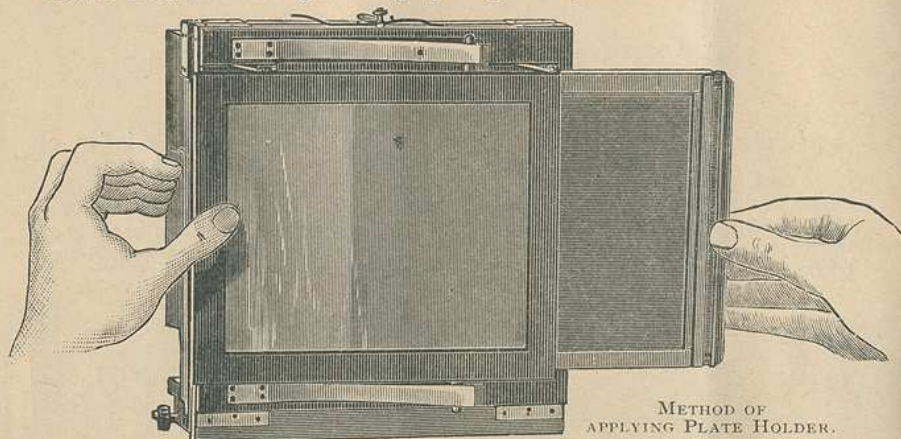


Nos. 1500-1505 CLOSED.

The focusing is achieved by the front of Camera and lens moving forward by a fine rack and pinion movement. By this method of construction and the Reversible Back, the slide from the Plate Holder can be drawn to the right or left when in a horizontal position, or when changed to the vertical position can be drawn upward or downward. The desirability of this will be apparent to

every photographer of experience. The reversing of the back (to enable the operator to make upright views) is accomplished by simply pressing a spring, and changing the holder from vertical to horizontal.

Another most unique part in its construction is the means of attaching the plate-holder and ground glass. The latter is attached by all four corners, and kept in position, wherever it may come to a bearing, by springs, and when the plate-holder is to be attached, the sideways movement of a couple of inches causes it to recede sufficiently for the holder to be slid in freely, without a spring to retard its motion and jar the camera; and when in position, and the ground glass frame, acted upon by the spring, is released, the latter lies firmly behind it—all of which is accomplished without the touching of a catch (as, indeed, there is none) or removing or swinging the ground glass frame.



METHOD OF
APPLYING PLATE HOLDER.

LIST OF BLAIR'S "IMPROVED" REVERSIBLE BACK CAMERAS.

No.	Size of Plate.	Size of Lens Board.	Capacity for Length of Focus	Price Single Swing.	Price Double Swing.
1500	4 x 5	3 $\frac{3}{8}$ in sq.	12 in.	\$23.00	\$25.00
1501	4 $\frac{1}{4}$ x 5 $\frac{1}{2}$	3 $\frac{3}{8}$ "	14 $\frac{1}{2}$ in.	28.00	30.00
1502	5 x 7	4 $\frac{1}{2}$ "	17 in.	31.00	33.00
1503	5 x 8	6 "	18 in.	35.00	37.00
1504	6 $\frac{1}{2}$ x 8 $\frac{1}{2}$	6 "	18 in.	35.00	37.00
1505	8 x 10	7 $\frac{1}{2}$ x 6 in.	20 in.	40.00	43.00

The bed is made in three sections, the outer or third one removable for all ordinary work; this section will not as a rule be required in the field. Unless otherwise specified all orders for these Cameras will be filled, fitted with

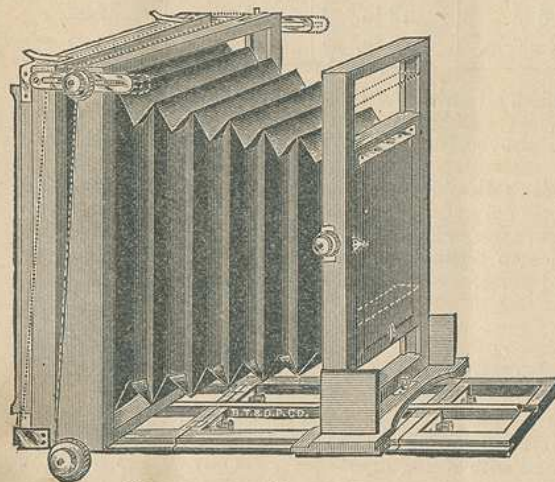
Feather Weight Holders. When English or B. P. are wanted, please specify. By removing the Reversible Back Adjuster, and applying our Patent Extension, (reversible) we have a Camera enabling the operator to use a size larger plate. (See Extension List page 14.)

The above prices include one double Holder and carrying case with each camera. Cases are made to carry three and six Feather Weight Holders. Please state which is desired when ordering.

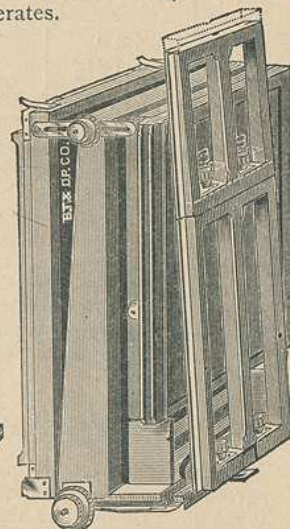
To estimate the price of an outfit embracing this Camera, add the price of lens you prefer to select from lens list pages 17-22, also Chemical Outfit page 35, and such articles as a perusal of advice to beginners given on pages 1-4, will suggest to meet your requirements and purse.

BLAIR'S CHAMPION (R. B.) CAMERAS.

The improvement embodied in this Camera over the Camera known as our Improved Reversible Back are as follows: The single and double swing, also the rising and falling front, are operated by a fine rack and pinion, with double thumb nuts attached, one for turning the pinion, the other for fastening when in proper position, (see dotted lines in cut.) The focusing is accomplished by means of a rod which runs in the bed of Camera, and by means of a clamp is attached to the base of movable front at any point desirable. Attached to the end of this rod, which passes under the rigid portion of the Camera, is a rack about five inches in length, into which the pinion operates.



NOS. 1510-1512 EXTENDED.



NOS. 1510-1512 FOLDED.

To focus the Camera, move the front out to *about* the focusing length of the lens used, then clamp the adjusting rod to the base; by turning the thumb nut to which the rod and pinion is attached, a very fine focus can be attained, while the thumb nut by which the movement is gained remains stationary.

This convenience was suggested by complaint sometimes being made that the stretch for the arm in focusing with the regular style was tiresome in using sizes above $6\frac{1}{2} \times 8\frac{1}{2}$, especially so when using the Extension. This method of focusing enables us to apply an improved form of Extension, which, though folding in less space than the other form, is capable of extending 13 inches to the rear, thereby making it possible to use any ordinarily long focused lens without cutting-off at the edges. (See pages 12-14.)

The Reversible Adjuster is fitted with metal corners and automatic spring at each end. The bed is in three sections, the front section removing entirely except in the case of using extremely long focus lenses, and the center folding up closely to the front when packed.

The Adjuster and Extension for "THE CHAMPION," and the "NEW REVERSIBLE BACK" Camera are not interchangeable. Please bear this fact in mind when ordering.

LIST CHAMPION (R. B.) CAMERAS.

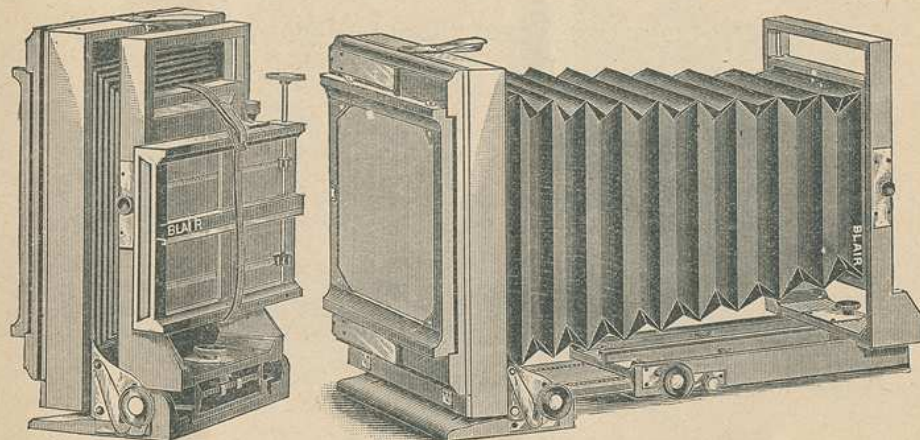
No.	Size of Plate.	Size of Lens Board.	Capacity for Length of Focus	Price Single Swing.	Price Double Swing.
1510	5 x 8	6 in.	18 in.	\$42.00	\$47.00
1511	$6\frac{1}{2} \times 8\frac{1}{2}$	6 in.	18 in.	42.00	47.00
1512	8 x 10	$7\frac{1}{2} \times 6$ in.	20 in.	45.00	50.00

Unless otherwise specified, all orders for these Cameras will be filled, fitted with English Holders. When Feather Weight Holders are wanted, please specify. Made only in the above sizes, except to order. (For Extension see page 14.)

Price of Camera includes 1 Double Plate Holder and Carrying Case. To estimate the price of an Outfit embracing this Camera add the price of lens you prefer to select from lens list page 17-22, also Chemical Outfit page 35, and such articles as a perusal of advice to beginners given on pages 1-5 will suggest to meet your requirements and purse.

BLAIR'S "PERFECT" (R. B.) CAMERAS.

The models of this instrument have been under progress in our factory for several months and have undergone every change to our mind possible to make it the most compact combined with strength possible. Its advantages over the "Improved" are:



NOS. 1515-1520 FOLDED.

NOS. 1515-1520 EXTENDED.

1st.—By the ingenious method of constructing the "swing back," greater swing is allowed while the camera occupies no additional space by this important advantage.

2nd.—By the method of constructing the telescopic bed, the standard carrying the lens is quickly carried out to about the focal distance of lens in use, and then by the use of the Rack and Pinion the fine focus is attained. The thumb nut and rod operating the Rack and Pinion is situated midway between the camera back and standard carrying the lens, which overcomes the objection of reaching forward when using long focus lenses. The telescopic bed leaves no detachable parts. When using lenses of shorter focus than five (5) inches the movable portion of the bed is not used; above that focal length the telescopic bed will not interfere with the view. *No clamping screws are used to make the bed rigid when attached.* There are two attaching nuts for the tripod screw thereby enabling the operator to balance the camera in using long and short focus lenses.

Bear strongly in mind that all of our Reversible Back Cameras possess greater focusing capacity by several inches than any other Camera of a similar pattern.

The double swing occupies no more space than the single. It is of our best manufacture highly polished with nickel mountings. Fitted with Feather Weight Holders unless otherwise specified.

Carrying Cases are made to carry Camera and one Holder, only measuring $11\frac{1}{2} \times 12 \times 5\frac{1}{2}$ for $6\frac{1}{2} \times 8\frac{1}{2}$, also to carry 6 Holders, arranged at the end of the Camera which makes the most convenient form to carry. Please specify which is wanted when ordering.

These Cameras are arranged to use with the regular or the Champion (Bellows) Extension. See page 14.

Adjusters or Extensions fitted to these Cameras are not interchangeable with those belonging to the "Champion."

LIST OF PERFECT (R. B.) CAMERAS.

No.	Size of Plate.	Size of Lens Board.	Capacity for Length of Focus	Price Single Swing.	Price Double Swing.
1515	4 x 5	3 $\frac{3}{8}$ in. sq.	12 in.	\$25.00	\$27.00
1516	4 $\frac{1}{4}$ x 5 $\frac{1}{2}$	3 $\frac{3}{8}$ "	14 $\frac{1}{2}$ in.	30.00	32.00
1517	5 x 7	4 $\frac{1}{2}$ "	17 in.	32.00	34.00
1518	5 x 8	6 "	18 in.	36.00	38.00
1519	6 $\frac{1}{2}$ x 8 $\frac{1}{2}$	6 "	18 in.	36.00	38.00
1520	8 x 10	7 $\frac{1}{2}$ x 6 in.	20 in.	45.00	48.00

To estimate the price of an Outfit embracing this Camera add the price of lens you prefer to select from lens list pages 17-22, also Chemical Outfit page 35, and such articles as a perusal of "Advice to Beginners" given on pages 1-5, will suggest to meet your requirements and purse.

STANDARD REVERSIBLE BACK CAMERA.

To meet the demand for an inexpensive, yet a substantial, well made Camera, which would be light and practicable, we have introduced this line of goods. They are provided with rising and falling front, double or single swing, made of thoroughly seasoned mahogany and cherry, varnish polished, fitted with Feather Weight Holders, unless otherwise specified.

On account of the movable portion for focusing being at the rear, our Patent Extension cannot well be applied to these Cameras.

LIST STANDARD (R. B.) CAMERAS.

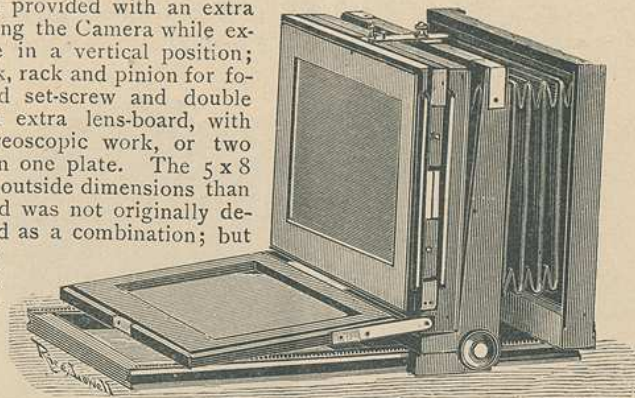
No.	Size of Plate.	Size of Lens Board.	Capacity for Length of Focus	Price Single Swing.	Price Double Swing.
1525	5 x 7	4 $\frac{1}{2}$ in. sq.	11 in.	\$18.00	\$20.00
1526	5 x 8	4 $\frac{5}{8}$ x 6 $\frac{5}{8}$	13 in.	21.00	23.00
1527	6 $\frac{1}{2}$ x 8 $\frac{1}{2}$	4 $\frac{5}{8}$ x 6 $\frac{5}{8}$	13 in.	21.00	23.00
1528	8 x 10	7 $\frac{1}{2}$ x 6	15 in.	25.00	27.00

Price includes one Holder. Carrying Case charged extra. Larger sizes to order.

THE BLAIR COMBINATION CAMERAS.

The 5 x 8 sizes of these Cameras are intended more especially for stereoscopic work, with the capacity by using the extension for working larger plates.

They are all provided with an extra bed for supporting the Camera while exposing the plate in a vertical position; single swing-back, rack and pinion for focusing, improved set-screw and double sliding front, an extra lens-board, with division for stereoscopic work, or two separate views on one plate. The 5 x 8 (A) is smaller in outside dimensions than our 5 x 8 (B), and was not originally designed to be used as a combination; but we have now fitted it for a 6 $\frac{1}{2}$ x 8 $\frac{1}{2}$ Patent Extension.



No. 1532 WITH HOLDER ATTACHED.

LIST OF THE BLAIR COMBINATION CAMERA.

No.	Size of Plate.	Size of Lens Board.	Capacity for Length of Focus.	Price Single Swing.
1530	4 x 5	4 in. sq.	12 in.	\$10.00
1531	5 x 8 (A)	6 $\frac{3}{4}$ x 4	13 in.	20.00
1532	5 x 8 (B)	7 $\frac{1}{2}$ x 4 $\frac{3}{4}$	14 $\frac{1}{2}$ in.	22.00

Only the 5 x 8 (B) will admit using the Feather Weight Holders.

The above prices include with camera, one Double Dry Plate Holder, and Carrying Case, with strap and handle.

The folding bed is so constructed as to carry within it two Double Dry Plate Holders when folded to go into the case. Parties in ordering should state plainly the number of extra Holders required.

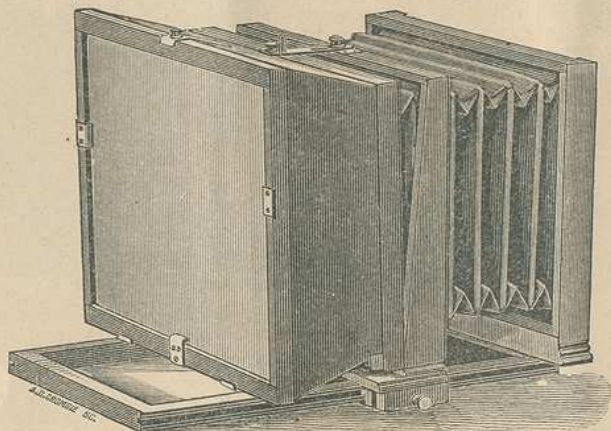
To estimate the price of an outfit embracing this Camera, add the price of Lens you prefer to select from lens list page 17, or also Chemical Outfit page 35, and such articles as a perusal of advice to beginners given on page 1-5, will suggest to meet your requirements and purse.



No. 1532 GROUND GLASS IN POSITION.

BLAIR'S PATENT EXTENSION.

By applying our Patent Extension we have a Camera enabling the operator to use a size larger plate.

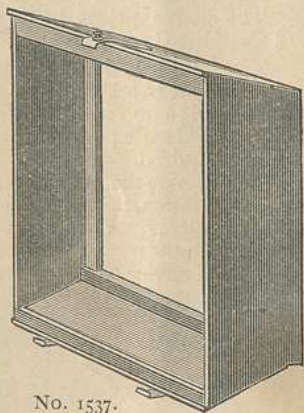


No. 1537 ATTACHED TO No. 1532.

A WORD ABOUT EXTENSIONS.

BLAIR PATENT EXTENSION is a contrivance for placing the plate a sufficient distance from the back of Camera proper to allow the rays to spread to the size of Plate to be used on the extension; it will therefore be understood that an extremely long or an extremely short focus lens cannot be used successfully.

In completing this valuable adjunct to photographic apparatus, it was not the idea of the inventor to substitute (for example) a 5 x 8 camera proper with an 8 x 10 extension, for an 8 x 10 camera, when the operator intended using 8 x 10 plates in the majority of cases, because it would be more desirable to have an 8 x 10 camera proper; but the idea was to furnish an attachment for the use of the operator who used 5 x 8 plates as a rule, and occasionally desired to use an 8 x 10, etc. The only disadvantages in a camera formed with the extension attached is, that a *very short focus* lens cannot



No. 1537.

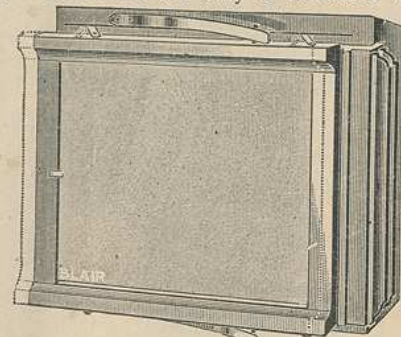
be used on account of the distance between the ground glass and camera front, and the fact when using a *very long focus* lens, the frame of camera proper prevents the rays from the lens spreading to the edge of the plate. To correct the former, we make, when desired, a recess front. The latter can only be remedied by increasing the depth of the extension.

The Bellows Extension for an 8 x 10 Camera is capable of extending 13 in. to the rear.

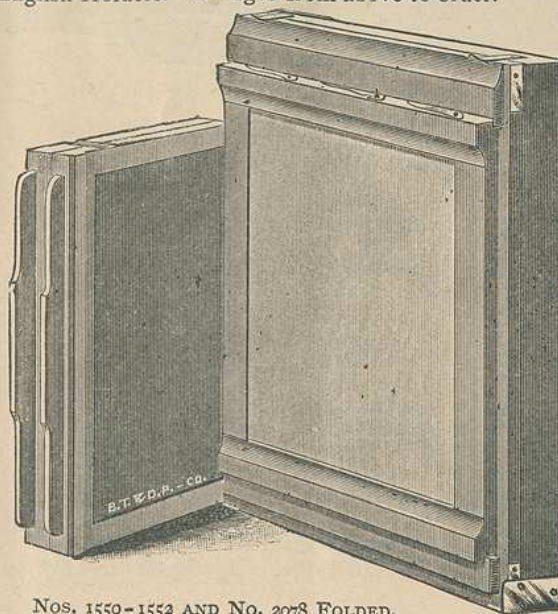
Our "Improved" "Perfect" and "Champion" Reversible Back Cameras, also our Combination Cameras are arranged to receive our Patent Extension.

The Champion and Perfect Cameras only will admit of using either the bellows or rigid form.

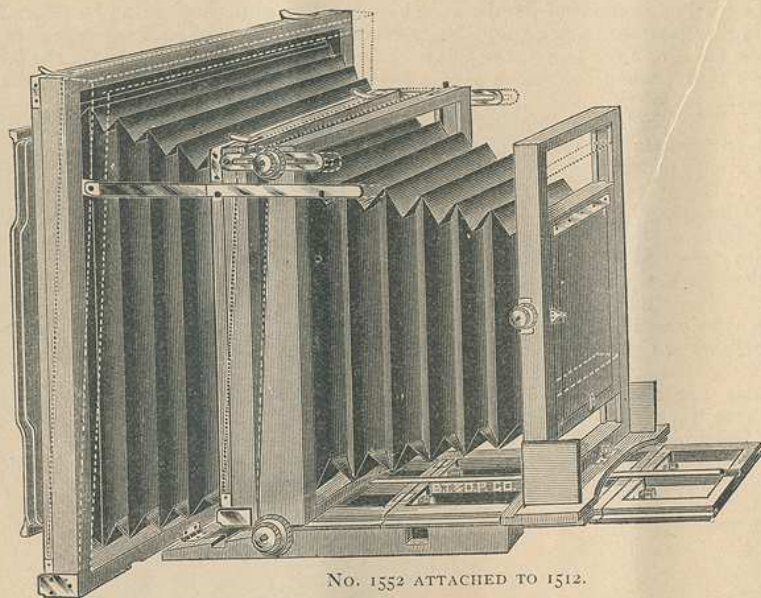
Extensions for Combination Cameras are fitted with B. P. Holders, those for "Improved" "Perfect" or "Champion" (R. B.) rigid form, are fitted with either Feather Weight or B. P. Holders; the bellows extension is fitted with English Holders. Changes from above to order.



Nos. 1540-1543.



Nos. 1550-1552 AND No. 2078 FOLDED.



No. 1552 ATTACHED TO 1512.

LIST OF EXTENSIONS.

For Combination Camera (rigid form)

NO.			PRICE.
1535	5 x 7	for 4 x 5 Camera	\$5.00
1536	6 1/2 x 8 1/2	" 5 x 8 A "	7.00
1537	8 x 10	" 5 x 8 B "	7.00

For Reversible Back Camera (rigid form.)

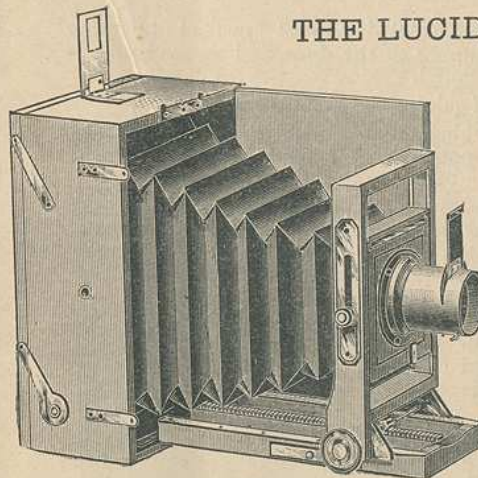
1540	5 x 8	for 4 1/4 x 5 1/2	\$7.00
1541	6 1/2 x 8 1/2	" 5 x 7 "	9.00
1542	8 x 10	" 5 x 7 "	9.00
1543	8 x 10	" 5 x 8 "	9.00
1544	8 x 10	" 6 1/2 x 8 1/2 "	9.00
1545	10 x 12	" 6 1/2 x 8 1/2 "	12.00
1546	10 x 12	" 6 1/2 x 8 1/2 "	12.00
1547	11 x 14	" 8 x 10 "	14.00

Bellows Extension.

		Single Swing.	Double Swing.
1550	11 x 14 to go on 6 1/2 x 8 1/2 Camera	\$20.00	\$23.00
1551	11 x 14 " " " 8 x 10 "	20.00	23.00
1552	14 x 17 " " " 8 x 10 "	25.00	30.00

Price of Extension includes 1 Double Plate Holder and Carrying Case.

THE LUCIDOGRAPH.



1560-1562 EXTENDED.

In attempting to compile a descriptive circular for this wonderful little instrument, we feel that it becomes us first to give some explanation regarding the name. Like the names of many other similar appliances it fails to express the real purpose of the instrument and will not be found in any of the many Dictionaries or Encyclopedias of the day. It is derived from the Greek word "grapho," to write, and the Latin "lucidus," light, therefore our LUCIDOGRAPH means Light-writer. Its origin is of the same source as that of the instrument, and the manufacturers of the LUCIDOGRAPH believe they have chosen a name which will prove popular and pleasing. The question may and doubtless will be asked us, "Why give a special name, or why not call it an outfit?" To which we would say, the term "Photographic Outfit" as generally applied to a Camera, Lens, and Tripod has, we believe, conveyed a false impression on the mind of the uninitiated, as they no more complete a photographic outfit than would a gun and game-bag complete a huntsman's outfit.

As it is our intention by having a very compact instrument yet simple and practical in all parts to impart a new and lasting interest in the practice of Photography as a pastime, we have considered it better to adopt new and more truthful plans of selling these outfits, (so called.)

The purchaser of a LUCIDOGRAPH is entitled to 1 Camera, 1 Feather Weight Double Plate Holder, 1 Single Achromatic Lens fitted with Instantaneous Shutter and adjusted to be used as an exposur, 1 Handle for Instantaneous work, and focusing cloth, all enclosed in canvas bag or carrying case, also 1 Feather Weight Tripod.

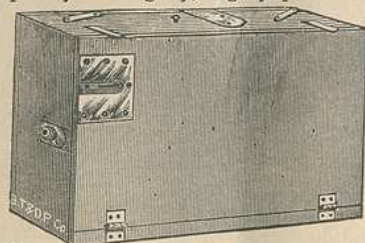

Although for the majority of work for which a view Camera is likely to be used the "Swing back" is not desirable, we have fitted the LUCIDOGRAPH with Double swing, as well as sliding front on size above 5 x 7, and added attachments by which the swing and sliding front are instantly centered and made stationary. See directions. We would here call special attention to our improved Double Swing, in the construction of the LUCIDOGRAPH. By attaching the portion to which the ground glass is hinged to the tripod, we have done away with the "Swing back," as when, for instance, we wish to take into the view more of the upper portion of a building, we tilt the bed upward while the ground glass remains stationary; thus the adjustment of the picture can be made with the "Swing Front" instead of the tripod, and the lines kept perpendicular. See

directions. We will therefore use the term "Swing Front" instead of "Swing Back." The bed is made rigid by clamping to the door, and as the clamp is near the outer end, greater rigidity is secured.

The same appliance is the means of gaining the Double Swing Front.

This instrument can be used for making either vertical or horizontal views, equally rigid and convenient in either position. When used in the horizontal position the slide to the plate holder can be drawn to the left or right

The focusing is attained by a fine rack and pinion, the front standard moving in metal guides and track. The ground glass frame is attached by our patent method which, as is well known, has no equal for convenience and safety. The body of the Camera is made of best quality mahogany, highly polished; the interior portion of selected cherry; the belows of A 1 rubber, card board and silesia. The Plate Holder is our well-known "Feather Weight." The Tripod is our celebrated pattern also known as the Feather Weight.



When folded, everything except the tripod is inclosed in the case. The 5 x 8 size measuring $9\frac{1}{2} \times 6\frac{1}{2} \times 4\frac{1}{4}$ inches. Smaller sizes in proportion.

To sum up, this instrument is the product of the best skill and workmanship of our factory, and our large and fine facilities have enabled us to fix the price low, believing our profits will, in the end, be equally large and our usefulness greater. Prices given include everything requisite for work in the field. Plates and extra Plate Holders excepted.

Nos. 1560-1562 FOLDED FOR CARRYING.
For price of Camera only, see page 31.

PRICE LIST LUCIDOGRAPH COMPLETE.

No. 1560, for $3\frac{1}{4} \times 4\frac{1}{4}$	Picture (no Sliding Front)	\$22.50
No. 1561, for $4\frac{1}{4} \times 5\frac{1}{2}$	" " " "	22.50
No. 1562, for 5×8	" (Sliding Front)	27.00


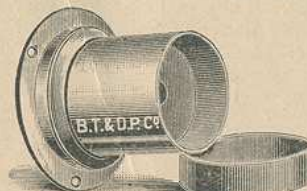
State plainly how many extra Holders are wanted. You can judge by knowing about how many Plates you would wish to expose before returning to your dark room in which to develop, or change for fresh ones. (Holders can always be refilled at night.) See directions.

Each carrying case will hold 3 Holders (2 extra.) Separate cases to hold 6; price \$1.50. For price of Holders see page 27.

The lens is carefully focused and points indicated on the bed frame for near and distant objects. Each Camera is fitted with a sight-piece and is supplied with a handle which will aid in holding the camera while making the exposure for instantaneous shots. For developing Outfit, Plates and accessories, see page 35.

LENSES.

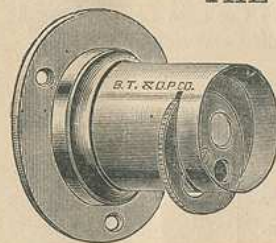
B. T. & D. P. CO. LENS.



"For landscape viewing, it is a well-conceded fact that there is nothing better than a Single Achromatic Lens, as the expression of perspective is natural, and it gives exceedingly uniform definition. We have seen many landscape pictures made with them which were all that could be asked for by the most critical; also many interiors and even portraits; which were in themselves gems; but by the curving of straight lines on the outer edge of the picture, they are unfit for this latter class of work. The same curving occurs in landscape views, but as the works of nature are not as a rule comprised of straight lines, the distortion is unnoticeable.

No. of Cat.	Agents No.	Makers No.	Size of Plate on which the lens will cut the Image fully.	Diameter of Lens.	Diameter of Flange.	Back Focus	Price.
1565		1	4 x 5	1 in.	2 in.	5½ in.	\$4.00
1566		2	5 x 8	1⅜ in.	2⅛ in.	8½ in.	5.00
1567		3	8 x 10	1⅜ in.	2⅛ in.	10 in.	6.00

THE LUCIDOGRAPH LENS.



This Lens is of extra fine quality, handsomely mounted, fitted with revolving diaphragm, and will make charming portraits, groups, and interiors. The largest opening to be used in making 4 x 5 pictures with the instantaneous shutter, which is fitted to the lens.

No. of Cat.	Agents No.	Makers No.	Size of Plate on which the lens will cut the Image clearly.	Diameter of Lens.	Diameter of Flange.	Back Focus	Price.
1570		1	3¼ x 4¼	1¼ in.	2⅛ in.	5 in.	\$7.00
1571		2	4¼ x 5½	1½ in.	2½ in.	8 in.	7 50
1572		3	5 x 8	1¾ in.	2¾ in.	9½ in.	8.00

DARLOT RAPID HEMISPHERICAL VIEW LENSES.

These Lenses embrace angles from 60 to 75 degrees; are quick-acting, perfectly rectilinear, and provided with central stops. They will be found very fine Lenses for landscapes, out-door groups, and instantaneous work; also for copying engravings, maps, architectural subjects, etc.

No. of Cat.	Agents No.	Makers No.	Size of Plate on which the lens will cut the Image fully.	Diameter of Lens.	Diameter of Flange.	Back Focus	Price.
1575		1	4 x 5	1 $\frac{1}{8}$ in.	2 $\frac{3}{8}$ in.	5 $\frac{1}{2}$ in.	\$15.00
1576		2	5 x 8		2 $\frac{1}{2}$ in.	9 in.	25.00
1577		3	8 x 10		3 $\frac{1}{8}$ in.	10 $\frac{1}{2}$ in.	35.00

VOIGTLAENDER'S IMPROVED EURYScope VIEW LENSES.

These Lenses are unrivalled for groups, full-length figures, and large heads, working with full apertures, and giving a depth of focus and equal distribution of light unexcelled by any known lenses. They are entirely free from distortion, and the pictures produced by them are mathematically correct, rendering them invaluable for copying plans and for architectural subjects. Another advantage is their extraordinary power of gathering light, adapting them particularly to the making of instantaneous views, animals in motion, yachts, etc. The width of angle embraced is from 65 to 85 degrees, according to the size of diaphragm employed. Nos. o and oo can be had in matched pairs for stereoscopic work."

No. of Cat.	Agents No.	Makers No.	Size of Plate on which the lens will cut the Image fully.	Diameter of Lens.	Diameter of Flange.	Back Focus	Price.
1580		o	4 x 5	1 $\frac{1}{8}$ in.	2 $\frac{1}{2}$ in.	4 $\frac{3}{4}$ in.	\$27.00
1581		oo	5 x 8	1 $\frac{1}{4}$ in.	3 in.	6 $\frac{1}{2}$ in.	37.00
1582		1	6 $\frac{1}{2}$ x 8 $\frac{1}{2}$	1 $\frac{1}{2}$ in.	3 $\frac{1}{8}$ in.	8 $\frac{1}{4}$ in.	45.00
1583		2	8 x 10	1 $\frac{3}{4}$ in.	1 $\frac{1}{4}$ in.	10 in.	52.00

BECK'S AUTOGRAPH LENS.

The Stops or Diaphragms furnished with these Lenses are made and numbered in accordance with the recommendations of the Photographic Society of Great Britain, whereby each number is double that of the preceding one, as it

requires twice the exposure. The ratio is the same throughout the entire series, so that, for instance, No. 32 of the No. 5 lens will require the same exposure as the corresponding stop of the No. 1, although its *actual* size is much greater. Each diaphragm has the number and f. engraved upon it as shown in the illustrations, and the initial one (No. 4 or f. 8) is the full aperture of the lens. They are made to embrace an angle of from 65° to 75°.

No. of Cat.	Agents No.	Makers No.	Size of Plate on which the lens will cut the Image fully.	Diameter of Lens.	Diameter of Flange.	Back Focus	Price.
1585	2760	1	3 $\frac{1}{4}$ x 4 $\frac{1}{4}$	$\frac{7}{8}$ in.	2 $\frac{1}{8}$ in.	4 $\frac{1}{2}$ in.	\$25.00
1586	2761	2	4 $\frac{1}{4}$ x 5 $\frac{1}{2}$	1 in.	2 $\frac{1}{8}$ in.	6 in.	30.00
1587	2762	3	5 x 8	1 $\frac{1}{4}$ in.	2 $\frac{1}{2}$ in.	8 in.	35.00
1588	2763	4	6 $\frac{1}{2}$ x 8 $\frac{1}{2}$	1 $\frac{1}{2}$ in.	3 $\frac{1}{8}$ in.	10 $\frac{1}{4}$ in.	45.00
1589	2764	5	8 x 10	1 $\frac{3}{4}$ in.	3 $\frac{1}{4}$ in.	12 $\frac{1}{4}$ in.	60.00

DALLMEYER'S RAPID RECTILINEAR VIEW LENSES.

These lenses are constructed to embrace angles from 60 to 80 degrees. They admit of being used with full opening, and are therefore invaluable for dimly lighted interiors and for instantaneous exposures. The image produced by them is absolutely free from distortion and the resulting pictures from all flare or central spots."

No. of Cat.	Agents No.	Makers No.	Size of Plate on which the lens will cut the Image fully.	Diameter of Lens.	Diameter of Flange.	Back Focus	Price.
1595		2	4 x 5	1 in.	2 $\frac{1}{8}$ in.	5 $\frac{1}{2}$ in.	\$37.00
1596		3	5 x 7	1 $\frac{1}{4}$ in.	2 $\frac{1}{8}$ in.	7 $\frac{1}{2}$ in.	45.00
1597		4	6 $\frac{1}{2}$ x 8 $\frac{1}{2}$	1 $\frac{1}{2}$ in.	2 $\frac{1}{8}$ in.	10 $\frac{1}{4}$ in.	57.00
1598		5	8 x 10	1 $\frac{3}{4}$ in.	2 $\frac{3}{4}$ in.	12 $\frac{1}{4}$ in.	74.00

ROSS' RAPID SYMMETRICAL LENSES

For Groups, Views, Interiors, Copying, and every kind of outdoor photography. Giving an angle of from 50 to 80 degrees. The "Rapid Symmetricals" being applanatic, work with full aperture.

(a) These Lenses are supplied accurately paired for stereoscopic purposes.

Waterhouse Diaphragms are supplied with these Lenses, as the apertures are too large to permit of Rotating Stops.

The Rapid Symmetrical Lenses are free from "flare" and distortion, and give absolutely straight marginal lines, rendering them invaluable for all kinds of architectural subjects, dimly-lighted interiors, copying, enlarging, etc.

With smaller stops, each lens covers the next size larger plate than that given, thereby greatly increasing the angle of view when desired. The two combinations being exactly similar, either can be used alone as an ordinary single Landscape Lens, the focus of which will be exactly double that of the compound.

No. of Cat.	Agents No.	Makers No.	Size of Plate on which the lens will cut the Image fully.	Diameter of Lens.	Diameter of Flange.	Back Focus	Price.
2000		a1	4 x 5	Unable to obtain from Agents.	Unable to obtain from Agents.	2 $\frac{3}{4}$ in.	\$24.00
2001		a2	5 x 7			3 $\frac{1}{2}$ in.	26.00
2002		a3	5 x 8			4 $\frac{3}{4}$ in.	28.00
2003		a4	6 $\frac{1}{2}$ x 8 $\frac{1}{2}$			5 $\frac{1}{2}$ in.	32.00

ROSS' PORTABLE SYMMETRICAL LENSES.

For Landscapes, Architecture, and Copying, giving wide or ordinary angles, according to the stop used.

(a) These Lenses are supplied accurately paired for Stereoscopic purposes. Nos. 1 to 8, Rotating Diaphragms. Nos. 9 to 12, Waterhouse Diaphragms. The entire ten of the series, having their screws alike, fit into the same flange.

These Lenses can be used with full aperture when only a limited field is required; while with smaller stops a wide angle is obtained. They work with about the same rapidity as the ordinary angle Doublets, their largest aperture being about equal to $\frac{1}{18}$ of their focus.

No. of Cat.	Agents No.	Makers No.	Size of Plate on which the lens will cut the Image fully.	Diameter of Lens.	Diameter of Flange.	Back Focus	Price.
2005			a5 x 7	1 $\frac{3}{10}$ in.		3 $\frac{3}{4}$ in.	\$48.00
2006			a5 x 8	1 $\frac{3}{10}$ in.		4 $\frac{3}{4}$ in.	50.00
2007			6 $\frac{1}{2}$ x 8 $\frac{1}{2}$	1 $\frac{6}{10}$ in.		5 $\frac{1}{4}$ in.	60.00

SUTER SWISS APLANETIC LENSES.

May be had in pairs of exactly equal focus, for Stereoscopic purposes at \$25 per pair,

These Lenses are specially designed for groups, rapid landscapes, and instantaneous work generally; even without stopping down they give a very flat field with considerable depth of focus, and owing to their large angular aperture, are about the quickest Lenses of the sort ever made. They are also used for portrait work — giving a sharper definition than the A series.

No. of Cat.	Agents No.	Makers No.	Size of Plate on which the lens will cut the Image fully.	Diameter of Lens.	Diameter of Flange.	Back Focus	Price.
2010		1	4 x 5	1 $\frac{1}{4}$ in.	2 $\frac{1}{4}$ in.	6 $\frac{3}{4}$ in.	\$30.00
2011		2	5 x 7	1 $\frac{1}{2}$ in.	2 $\frac{9}{16}$ in.	9 in.	40.00
2012		3	6 $\frac{1}{2}$ x 8 $\frac{1}{2}$	2 in.	2 $\frac{7}{8}$ in.	11 $\frac{1}{2}$ in.	50.00
2013		4	8 x 10	2 $\frac{1}{2}$ in.	3 $\frac{1}{16}$ in.	15 in.	78.00

WIDE ANGLE LENSES.

For street views, architectural effects in confined situations, and many interiors, it becomes necessary to employ lenses of a very wide angle and comparatively short focus.

DARLOT'S WIDE ANGLE HEMISPHERICAL LENS.

No. of Cat.	Agents No.	Makers No.	Size of Plate on which the lens will cut the Image fully.	Diameter of Lens.	Diameter of Flange.	Back Focus	Price.
2015		1	3 $\frac{1}{4}$ x 4 $\frac{1}{4}$		2 $\frac{3}{8}$ in.	2 $\frac{1}{2}$ in.	\$12.50
2016		2	4 x 5		2 $\frac{1}{2}$ in.	3 in.	15.00
2017		3	8 x 10		3 $\frac{1}{8}$ in.	5 in.	20.00

VOIGTLAENDER'S WIDE ANGLE EURYScope LENS.

No. of Cat.	Agents No.	Makers No.	Size of Plate on which the lens will cut the Image fully.	Diameter of Lens.	Diameter of Flange.	Back Focus	Price.
2020		0	5 x 6		2 $\frac{1}{2}$ in.	4 $\frac{1}{8}$ in.	\$29.00
2021		1	5 x 8		2 $\frac{1}{2}$ in.	5 $\frac{1}{8}$ in.	34.00
2022		2	6 $\frac{1}{2}$ x 8 $\frac{1}{2}$		2 $\frac{1}{2}$ in.	6 $\frac{1}{8}$ in.	39.00
2023		3	8 x 10		2 $\frac{1}{2}$ in.	7 $\frac{1}{8}$ in.	48.00

ROSS' LARGE ANGLE DOUBLET, C.

Angle subtended by diagonal of plate, about 95 degrees. These are the only Large-Angle Lenses absolutely free from flare or distortion, and are best Lenses for interiors ever made.

No. of Cat.	Agents No.	Makers No.	Size of Plate on which the lens will cut the Image fully.	Diameter of Lens.	Diameter of Flange.	Back Focus	Price.
2030		a	3 1/4 x 4 1/4	3/4 in.		4 1/2 in.	\$32.00
2031		a1	4 x 5	1 in.		6 in.	34.00
2032		a2	5 x 7	1 1/4 in.		7 1/2 in.	42.00
2033		a3	5 x 8	1 3/8 in.		8 1/2 in.	46.00
2034		a4	6 1/2 x 8 1/2	1 1/2 in.		11 in.	52.00

DALLMEYER'S WIDE ANGLE RECTILINEAR LENS.

These Lenses are mounted in rigid settings or tubes, and furnished with rotating diaphragm plates. The No. 1 (AA) can be had in matched pairs for stereoscopic work. They are probably the finest Wide Angle Lenses made.

No. of Cat.	Agents No.	Makers No.	Size of Plate on which the lens will cut the Image fully.	Diameter of Lens.	Diameter of Flange.	Back Focus	Price.
2035		1aa	4 1/2 x 7	7/8 in.	2 1/8 in.	3 1/2 in.	\$37.50
2036		1a	6 1/2 x 8 1/2	1 1/4 in.	2 3/4 in.	4 5/8 in.	45.00
2037		1	10 x 12	1 1/2 in.	2 3/4 in.	6 1/4 in.	61.50

SHUTTERS.

English Instantaneous Shutters No. 2040, suitable for small and medium lenses	\$7.00
English Instantaneous Shutters No. 2041, for large lenses	8.00
Standard Drop, two sizes, either size 2042	1.50

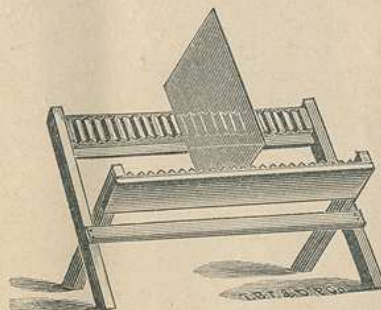
DRY PLATES.

We quote but two different brands, the Marshall & Blair, and the Manley Howe Plates. The price of each being the same and working qualities similar; they are both warranted by us. Full directions are given for use with each out fit and formula for developing with each dozen.

LIST.

Size.	Price.	Size.	Price.
3 1/4 x 4 1/4	\$0.45	5 x 8	\$1.25
4 x 5	0.65	6 1/2 x 8 1/4	1.65
4 1/4 x 5 1/2	0.75	8 x 10	2.40
4 1/2 x 6 1/2	0.90	10 x 12	3.80

THE NEGATIVE DRYING RACK.

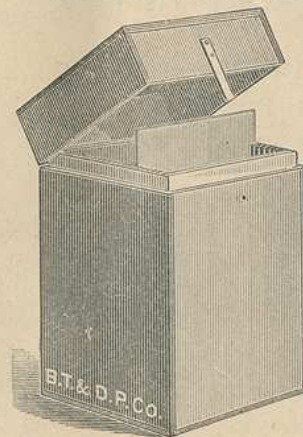


Indispensable for convenience and to prevent negatives becoming scratched while drying.

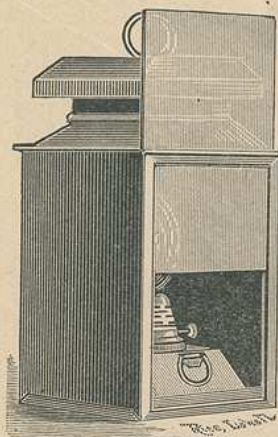
2045	50 cents for plates to 8 x 10
2046	90 cents for plates to 14 x 17

NEGATIVE BOXES.

The trouble of unwrapping and wrapping a package of plates in the dark room, when filling a plate holder in a hurry, suggests the convenience of this article, also as a convenient and durable means of storing negatives. Thoroughly and neatly made, with joints thoroughly broken to protect the plates from light, each carrying two dozen plates.



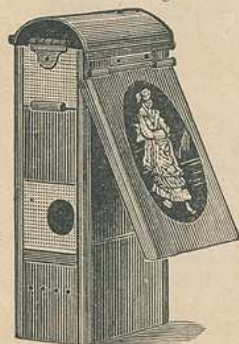
No.	Size.	LIST.	Price.
2050	3 1/4 x 4 1/4		\$0.75
2051	4 x 5		0.80
2052	4 1/4 x 5 1/2		0.90
2053	4 1/4 x 6 1/2		0.90
2054	5 x 7		1.00
2055	5 x 8		1.00
2056	6 1/2 x 8 1/2		1.10
2057	8 x 10		1.25



No. 2065.

THE TRIUMPH RUBY LANTERN.

This Lantern, though previous'y considered to be the best-made lantern sold, has been greatly improved both in appearance and utility, and now stands without a peer. The glass is encased in a neatly made frame which is easily removed; in front of the ruby glass is space for a glass of another color, or orange paper. We warrant this to be all we claim for it, viz., practical, white light proof, free from unpleasant fumes, and perfectly cool at the base while burning. It is particularly adapted for photo-micrography, or the making of transparencies and lantern slides, as the ruby glass is easily withdrawn, and a powerful reflector in the back strengthens the power of the light many times. Price, \$2.75.



No. 2066.

THE W. I. A. RUBY LANTERN.

As a means of obtaining a small amount of light with a lantern that is compact and portable, this style answers the purpose admirably. It cannot be recommended, however, for general use in the developing room.

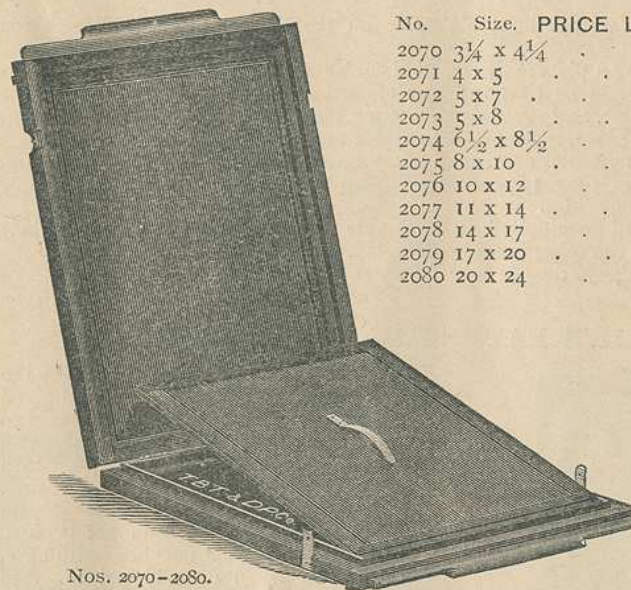
Price, 50 cents.

DOUBLE DRY PLATE HOLDERS. THE ENGLISH PLATE HOLDER.

This form of Holder for Dry Plates has long been in use and acknowledged to be one of the best. The high price at which they necessarily must sell, and the bulk and weight above that of the Feather Weight Holders, is the only reason why we have not made them sooner.

All sizes up to 8 x 10 are fitted with our Black-board Registering Slides.

Made to receive kits, and can be fitted to any Camera of standard make when ordered.



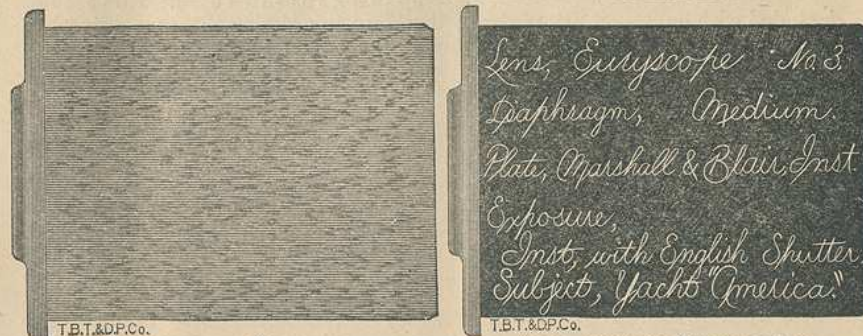
Nos. 2070-2080.

No.	Size.	PRICE LIST.	Price.
2070	3 1/4 x 4 1/4		\$2.15
2071	4 x 5		2.25
2072	5 x 7		2.75
2073	5 x 8		2.75
2074	6 1/2 x 8 1/2		4.00
2075	8 x 10		5.50
2076	10 x 12		8.00
2077	11 x 14		9.00
2078	14 x 17		12.00
2079	17 x 20		15.00
2080	20 x 24		22.00

Larger sizes made single or double to order. Estimates furnished. Extra charges for fitting holders and adjusters to special cameras.

In ordering duplicate holders, state what camera they are intended for, whether with or without adjusters.

BLACK BOARD REGISTERING SLIDES.



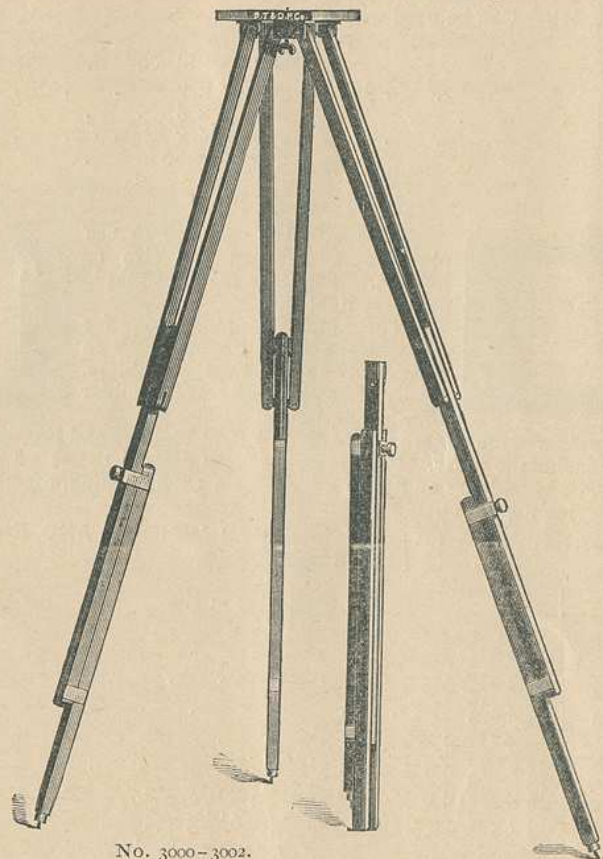
T.B.T. & D.P. Co.
SLIDE BEFORE REVERSED.

T.B.T. & D.P. Co.
SLIDE SHOWING MEMORANDUM.

TRIPODS.

BLAIR COMBINATION TRIPOD.

This tripod combines the rigidity of the folding with the convenience of the sliding tripod. It is extra length when open, and folds shorter than the ordinary style. Its merits are so readily seen by referring to cut, that we forego a lengthy description. It is made of best material, and A 1 in all respects, with large tops.

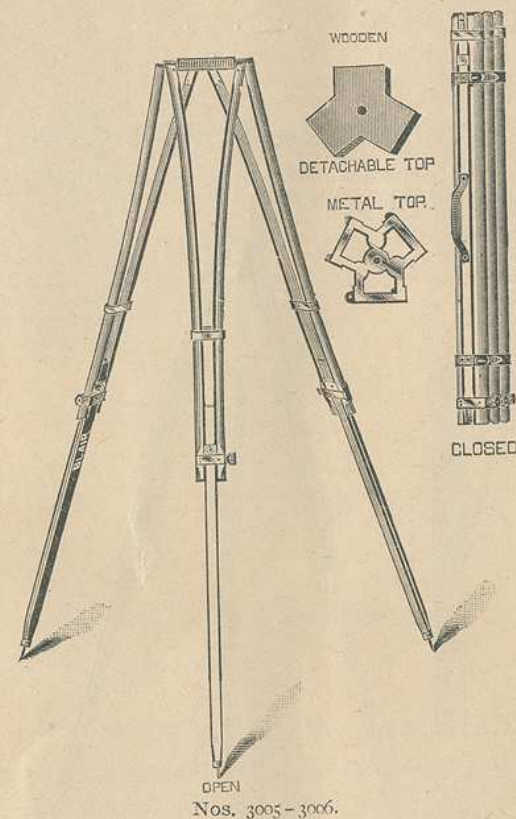


No. 3000-3002.

BLAIR COMBINATION TRIPOD, AND ADDITIONAL LEG FOLDED.

Cat. No. 3000.	Size No. 1	intended for $6\frac{1}{2} \times 8\frac{1}{2}$ Camera	\$4.50
" 3001.	" 2	" 8×10 , and 11×14 Camera	6.00
" 3002.	" 3	" larger Cameras	7.50

THE FEATHER WEIGHT TRIPOD. (ADJUSTABLE.)



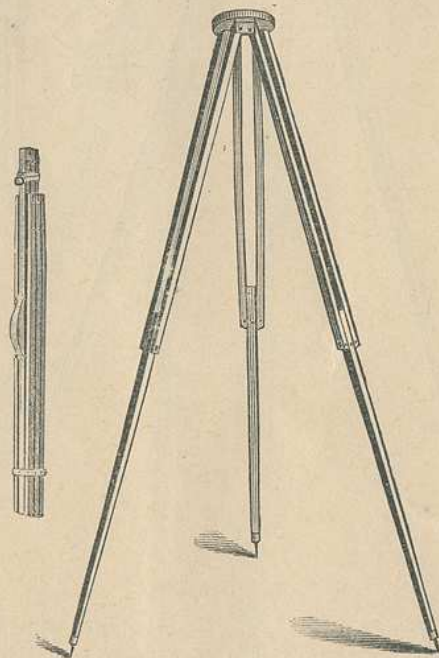
This form of Tripod originated in England, and while it had the desirable qualities of lightness and rigidity, it in many cases proved useless as the sliding portion was only held in place by what friction might be caused in the bearings pressing together, but as they became worn, a slight pressure or a moderately heavy Camera would press one or the other and sometimes all three legs downwards. Recognizing the desirable qualities, and being aware of the faults, we have improved them by applying to the telescopic or lower portion of the leg, a clamp which securely binds the three parts together. We have also greatly im-

proved the quality of workmanship. They are made of best quality well-seasoned cherry, polished. The wooden tops are made of three pieces glued together and covered with cloth.

No. 3005. Price with wooden top \$4.00
 " 3006. " " metal " 4.50

ENGLISH FOLDING TRIPOD.

This has proven one of the most popular form of tripod yet introduced; it combines rigidity, ease of adjustment, and compactness when folded.

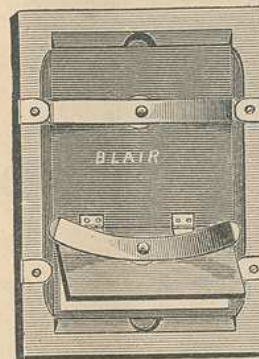


Nos. 3007-3008.

PRICES.

No. 3007. Made of the best quality straight-grained maple \$2.50
 " 3008. Extra quality and finish 3.00

BLAIR'S SUPERIOR PRINTING FRAMES.



These Printing Frames have all the latest and most improved attachments, swiveling washers under the springs, which are riveted. The ears which hold the spring in place are sunk flush with the top of frame, which prevents the screw heads from scratching whatever they rest on.

The sharp corners of the frame are taken off, making them much more agreeable to handle.

Made of best quality kiln dried wood.

PRICE LIST.

No.	Size.	Price.	No.	Size.	Price.
3010	3 1/4 x 4 1/4, flat,	\$0.45	3015	5 x 7, or 5 x 8,	\$0.60
3011	4 x 5,	0.45	3016	6 1/2 x 8 1/2, flat,	0.65
3012	4 1/4 x 5 1/2,	0.45	3017	8 x 10, "	0.75
3013	4 1/4 x 6 1/2,	0.55	3018	10 x 12, "	1.00
3014	4 x 7, or 4 x 8,	0.55	3019	11 x 14, "	1.75

When the pressure board opens lengthwise 10% is added to the above price.

LUCIDOGRAPH CAMERA.

To accommodate those desiring the Lucidograph Camera only.

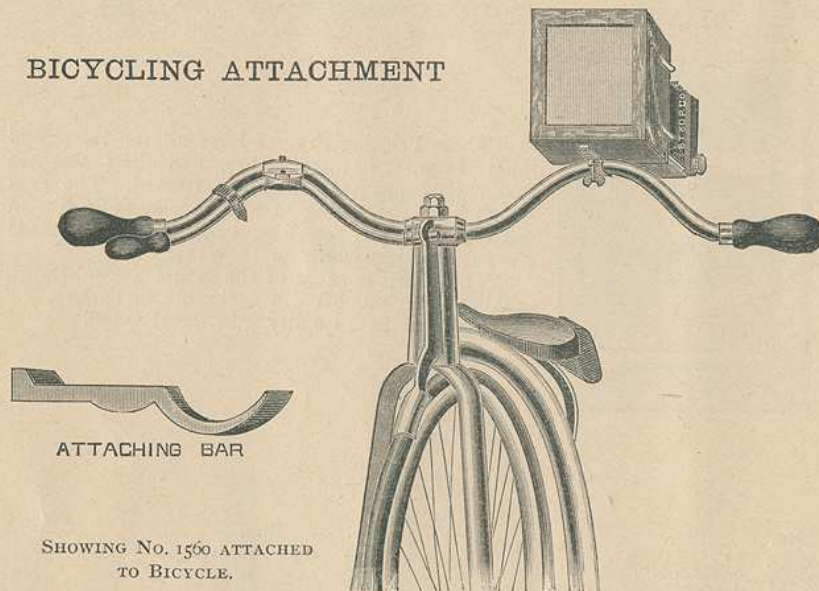
Cat. No.	No.	Size.	Focusing capacity.	Price.
3020	1	3 1/4 x 4 1/4	8	\$12.00
3021	2	4 1/4 x 5 1/2	9 1/2	12.00
3022	3	5 x 8	11 1/2	15.00

Price includes Carrying Case and 1 Plate Holder.

When ordered to receive the English Holders, 10 per cent. added to this price.

Other sizes to order. 20 per cent additional added to size next above. Can not well be made larger than 6 1/2 x 8 1/2.

BICYCLING ATTACHMENT

SHOWING No. 1560 ATTACHED
TO BICYCLE.

The demand is so rapidly growing for a Camera which can be carried on Bicycle, and the compactness of this instrument makes it so well adapted for this purpose, that we have arranged convenient and reliable attachments, which will now enable the Bicyclist to secure the many beautiful scenes to be met with in his tours. First we have the Telescopic Bar, used in making a tripod of the Bicycle.



OPEN.

By placing the forked end under the hub, and the pointed end in the ground, and by strapping the brake tightly to the handle and allowing the wheel to cant sufficiently to hold it rigid, a very convenient stand is arranged. The use of the Attaching Bar is self-evident, the half round being to receive the handle of the Bicycle, the tripod screw passing through the bar, and clamping the handle of the Bicycle and projection or bar against the Camera.



CLOSED.

The telescopic bar can be attached to the handle when riding, and the Camera to the saddle-bag, or both can be strapped over the shoulder to suit the fancy of the rider.

The $3\frac{1}{4} \times 4\frac{1}{4}$ is especially designed for this purpose.

No. 3025.	Price of Attaching Bar	\$0.50
" 3026.	Price of Telescopic Bar	1.50

THE EXCELSIOR PAPER CUTTER.

The excelsior paper cutter is better and more rapid than a knife, and superior to anything in use for trimming Photo. Prints. Having a circular revolving blade, extra hardened, and with a sharp chisel edge which will not turn, it makes a clean cut. It does not PINCH OFF the paper. The beveled cutting edge being at the side and not in the centre, the knife may easily be sharpened by removing the screw and rubbing it flat on an oil-stone, which gives it a decided advantage over any other. In cutting always use a glass surface. No. 3028. Price 50 cts. For sale by all dealers.

THE STANDARD CAMERAS.

They are put on the market as an inexpensive though reliable Camera. Complete with Camera and one Double Dry Plate Holder.

They are accurate and reliable, made of well-seasoned Whitewood, finished in black or stained *Imitation Mahogany*.

No.	Size.	PRICES.
3030	4 x 5	\$3.50
3031	5 x 8	4.50

READY SENSITIZED ALBUMEN PAPER,
FOR PRINTING THE PICTURE.

PACKAGE SENSITIZED PAPER, one dozen,	4 x 5	\$0.25
" " " "	$4\frac{1}{4} \times 5\frac{1}{2}$	0.25
" " " "	5 x 7	0.40
" " " "	5 x 8	0.40
" " " "	$6\frac{1}{2} \times 8\frac{1}{2}$	0.60
" " " "	8 x 10	0.80

This Paper is made by the best Manufacturer in Paris. Its quality is of the best, it is highly sensitized, prints readily, and tones to any desired tint with the greatest facility. It is almost universally used in the galleries of Europe, yielding effects in no wise inferior to those obtainable with freshly sensitized paper. Its keeping qualities are extraordinary, as excellent prints may be made with it a year after sensitizing. Each package is made up with chemically prepared pads, which greatly add to its keeping qualities; and to save possible loss, packages and rolls are not broken. Formulæ for printing and toning accompany each package. For the amateur, this Ready Sensitized Paper is an indispensable requisite, whilst to the professional photographer it offers numerous advantages which he will not be slow to recognize.

ROMAN BLUE PAPER.

The simplicity and convenience of this paper recommends it for making proofs of negative and copies of drawing on paper or in fact, any substance which will admit light through. Put up in packages of 2 dozen.

Size.	Price per package.
4 x 5	\$0.25
5 x 7	0.40
5 x 8	0.45
6 1/2 x 8 1/2	0.60
8 x 10	0.80

THE HUB CONCENTRATED ALKALI DEVELOPER.

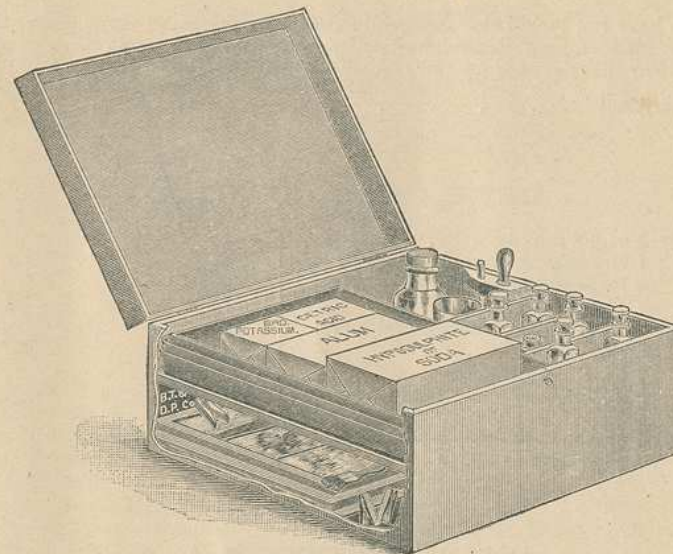
This is the best and most economical Developer in use. A pint bottle will develop ten dozen 5 x 8 plates producing the finest chemical effects. Errors of exposure are controlled with ease. Only the best of chemicals used in the manufacture.

Price per pint	\$1.00
" " quart	1.85
" " gallon	7.00

THE HUB CONCENTRATED TONING SOLUTION.

By which the Manipulator can obtain any color, from a Sepia to an Intense Black and White, if so desired.

Directions for use: Take equal parts of Toning Solution and Water. This bath can be used indefinitely by simply adding 1/2 oz. more of Stock Toning Solution every time before using.



Nos. 3035-3036.

DEVELOPING OUTFIT A.

We have arranged with great care a case containing all requisites for development by the Pyrogallic and Ammonia process. The solutions are in glass-stoppered bottles ready for mixing, and the Pyrogallic Acid is in tablet form so that no weighing is necessary, the case containing sufficient chemicals to develop one hundred 5 x 8, or two hundred 3 1/4 x 4 1/4 plates; and the case is supplied with dropping tube, stirring rod, camel's-hair brush, graduated pouring cup, three 5 x 8 japanned tays, three dozen sheets Roman blue paper, and small and large printing pads; also stock of chemicals to make first developing and fixing solution, including 2 oz. concentrated Ammonia, 2 oz. Bromide Potassium, 1/2 lb. pulverized Alum, 1/2 lb. Hyposulphite Soda, 2 oz. Citric Acid, with full directions for use; including three negatives, showing one negative one-half under exposed, one-half fully exposed, one negative (cut in two) showing half undeveloped, half fully developed, one negative overtimed using strong restrainer, the other half developed in usual manner.

These are all classified and labelled in a frame. Each bottle has our initials in the glass.

When a lantern is desired, our Triumph Ruby is recommended. See page 24.

No. 3035	Price, complete, for 5 x 8 Plates and smaller	\$5.00
" 3036	" " " for 8 x 10 and 6 1/2 x 8 Plates	7.00

We have not included a Lantern in the above Outfit, as many prefer to contrive one for their own convenience, or by using daylight coming through colored paper. For this purpose we can recommend the cherry-red fabric.

Price, per yard \$0.75

DEVELOPING OUTFIT B.

No. 3037	For 5 x 8 and smaller including	} \$2.00
	1 Graduated Pouring Glass		
	2 Developing Trays		
	1 Blending Brush		
	1 Pint-Bottle "Hub Developer"		
	$\frac{1}{2}$ lb. Alum		
	1 oz. Bromide Potassium	} \$3.00
	2 lb. Hyposulphite Soda		
No. 3038	For 8 x 10 and $6\frac{1}{2}$ x $8\frac{1}{2}$	} \$3.00
	Same as above		

PRINTING OUTFIT A.

No. 3039	For 4 x 5 Negatives, including	} \$4.50
	2 doz. 4 x 5 Sensitized Albumenized Paper		
	Blue Litmus Paper		
	15 grains Chloride of Gold		
	$\frac{1}{2}$ lb. Bicarbonate of Soda		
	2 oz. Acetate Soda		
	$\frac{1}{2}$ oz. Chloride Sodium		
	1 lb. Hyposulphite Soda		
	1 4 x 5 Printing Frame		
	1 5 x 8 Toning Pan (Japanned)		
	1 5 x 8 Fixing		
	$\frac{1}{2}$ oz. Graduate		
	1 Jar Paste		
	1 Paste Brush		
	1 Straight Trimmer.		
	12 Sheets Card Board		
No. 3040	For $4\frac{1}{4}$ x $5\frac{1}{2}$ Negatives (same as above)		\$4.75
3041	5 x 7		5.00
3042	5 x 8		
3043	$6\frac{1}{2}$ x $8\frac{1}{2}$		6.00
3044	8 x 10		7.00

PRINTING OUTFIT B.

No. 3045	For 4 x 5 Negatives	} \$2.10
	2 doz. Sensitized Albumenized Paper		
	Litmus Paper		
	1 Pint Bottle ("Hub Toning Solution")		
	1 lb. Hyposulphite Soda		
	1 4 x 5 Printing Frame	} \$2.10
	$\frac{1}{2}$ oz. Graduate		

PHOTOGRAPHIC CHEMICALS.

Acid Citric	per oz. 12 cts., per lb. 80 cts.
Acid Pyrogallie	per $\frac{1}{2}$ oz. 25 cts., per oz. 40 cts.
Alum	per lb. 15 cts.
Ammonium Liq. (Conc.)	$\frac{1}{2}$ lb. bottles 25 cts., 1 lb. bottles 40 cts.
Gold Chloride of	15 grain bottle 60 cts., 30 grain bottle \$1.15
Iron Protosulphite of	per lb. 08 cts.
Litmus Paper	per sheet 05 cts.
Oxalate Potash	per lb. 45 cts.
Potassium Bromide	per oz. 10 cts.
Soda Sulphite (granular)	per $\frac{1}{2}$ lb. 30 cts., per lb. 60 cts.
Soda Hyposulphite	1 lb. 08 cts.
Blending Camels Hair Brushes, 1 in.	\$0.25
" " " " $1\frac{1}{2}$ in.	0.35
Graduate Measures	1 dr. 0.25
" " " " 1 oz.	0.25
" " " " 4 oz.	0.40
Graduate Pouring Glasses	4 oz. 0.40

RECESS OR EXTENSION FRONTS.

These are used as a means in decreasing the distance between the ground glass and the front of Camera for an exceedingly short focus lens, and can be reversed to increase the focusing capacity in using one of a very long focus, or when copying.

PRICE LIST.

No.	Size of Camera.	FOR REVERSIBLE BACK CAMERA.	Price
3046	$4\frac{1}{4}$ x $5\frac{1}{2}$	}	\$1.50
3047	5 x 7		
3048	$6\frac{1}{2}$ x $8\frac{1}{2}$	}	2.00
3049	8 x 10		
3050	11 x 14		

No.	FOR ORIGINAL COMBINATION CAMERA.	
3051	4 x 5	} 1.25
3052	5 x 8	
3053	8 x 10	

Special Sizes to order at an increased cost.

PRICE LISTS OF SPECIAL PARTS OF CAMERA.

In ordering special parts, it is always a safe and simple plan, when the shape will admit, to lay the part of which a duplicate is desired on a paper, and outline the size, etc. In fact, this applies with equal effect in ordering Plate Holders, etc.

	REVERSIBLE ADJUSTERS.	Price.
For	4 1/4 x 5 1/2 Camera, Reversible Back	\$5.00
"	5 x 7 " " " "	5.00
"	6 1/2 x 8 1/2 " " " "	6.00
"	8 x 10 " " " "	7.00
"	5 x 8 Combination Camera (B)	4.00
	Special sizes 10% to 20% extra.	

	COMBINATION CAMERA FRONTS.	Price.
Lens (or Front) Boards for	4 x 5, Sliding and Stationary	\$0.35
" " " "	5 x 8 (A) " "	0.45
" " " "	5 x 8 (B) " "	0.45
" " " "	8 x 10 " "	0.50

	REVERSIBLE BACK, POLISHED FRONTS.	Price.
Lens (or Front) Boards for	4 1/4 x 5 1/2	\$0.35
" " " "	5 x 7	0.45
" " " "	6 1/2 x 8 1/2	0.50
" " " "	8 x 10	0.55
" " " "	11 x 14	0.60

	COMBINATION CAMERA FRONTS, SLIDING.	Price.
Sliding Front for	5 x 8 (A) Vertical, not including Lens Board	\$1.25
" " " "	5 x 8 (A) Horizontal	1.25
" " " "	5 x 8 (B) Vertical	1.25
" " " "	5 x 8 (B) Horizontal	1.25
" " " "	8 x 10 Vertical	1.50
" " " "	8 x 10 Horizontal	1.50

Folding Beds, without Racks, from	4 x 5 11 x 14	50 cts. to \$3.50
Ground Glass, in Frame, from	4 x 5 11 x 14	75 cts. to \$3.00
Thumb Screws, from		15 cts. to 40 cts.

OTHER PARTS AT CORRESPONDING PRICES.

We do not always carry "special" parts in stock and cannot guarantee to fill orders promptly. We can give no price of parts for trimming or agree to fill orders for them *unless convenient*.

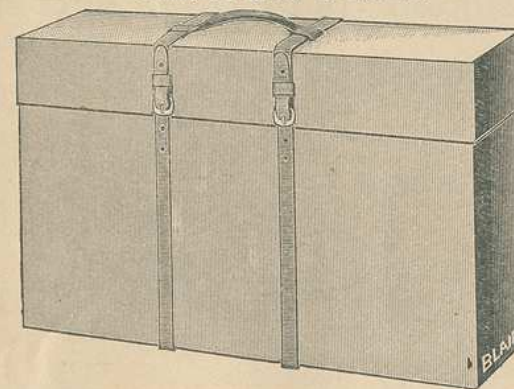
PRICE LIST OF SPECIAL PARTS TO HOLDER.

Slides, 5 x 8, with end piece attached	\$0.10
" 8 x 10 " "	0.15
" 11 x 14 " "	0.25

PRICE LIST OF SPECIAL PARTS OF TRIPODS.

Heads, without Screw	\$0.75
Single Legs	0.75
Attaching Screws, plain	0.25
" " with band	0.30

CARRYING CASES.



CARRYING CASE FOR "PERFECT" CAMERA, CONTAINING 6 F. W. HOLDERS.

PRICE LIST OF CARRYING CASES.

Carrying Case, for	4 x 5 Utility, with Strap	\$1.00
" " "	5 x 8 " "	1.15
" " "	4 x 5, Combination Camera, with Strap and Handle	1.35
" " "	5 x 8 " " " "	2.25
" " "	8 x 10 " " " "	2.50

Carrying Case, for $4\frac{1}{4} \times 5\frac{1}{2}$, Reversible Back, Duck Cloth	2.25
" " 5×7 " " " "	2.50
" " $6\frac{1}{2} \times 8\frac{1}{2}$ " " " "	2.75
" " 8×10 " " " "	3.25
" " 11×14 " " " "	4.00
" " 5×8 Extension, Black Cloth	1.25
" " 8×10 " " " "	1.75
" " 10×12 " " " "	2.50
" " 5×8 " Duck Cloth	2.00
" " 8×10 " " " "	2.25
" " 10×12 " " " "	2.50
" " 11×14 " " " "	2.75
" " $3\frac{1}{4} \times 4\frac{1}{4}$ Lucidograph Duck Cloth	2.00
" " $4\frac{1}{4} \times 5\frac{1}{2}$ " " " "	2.25
" " 5×8 " " " "	2.50
Perfect Camera having partition, carrying 6 Feather Weight Holders with two straps and adjustable handle.	
Prices range from \$1.75 for 4×5 to \$4.00 for 8×10 .	

Extra straps from 25 to 55 cts.

MEASUREMENTS OF PLATE HOLDERS.

Size.	Style.	Outside Dimensions, inch.
4×5	Improved Feather Weight Holder	$5 \times 7 \times 5\frac{5}{8}$
$4\frac{1}{4} \times 5\frac{1}{2}$	" " " "	$5\frac{1}{4} \times 7\frac{1}{2} \times 5\frac{5}{8}$
5×7	" " " "	$9\frac{1}{8} \times 6 \times 5\frac{5}{8}$
$6\frac{1}{2} \times 8\frac{1}{2}$	" " " "	$10\frac{1}{2} \times 7\frac{1}{2} \times 5\frac{5}{8}$
8×10	" " " "	$12\frac{1}{4} \times 9\frac{1}{4} \times 3\frac{1}{4}$
4×5	Blair Patent Holder	$6\frac{3}{4} \times 5\frac{1}{4} \times 1$
5×8	" " " "	$10\frac{3}{4} \times 7\frac{1}{2} \times 1$
$6\frac{1}{2} \times 8\frac{1}{2}$	" " " "	$7\frac{1}{2} \times 10\frac{1}{2} \times 1$
8×10	" " " "	$12\frac{1}{2} \times 10 \times 1$
10×12	" " " "	$11 \times 14 \times 1$
8×10	" " " for Extension	$12\frac{1}{2} \times 9\frac{1}{2} \times 1$
5×7	English Holders	$8\frac{3}{4} \times 6\frac{1}{4} \times 1$
5×8	" " " "	$9\frac{3}{4} \times 6\frac{1}{4} \times 1$
$6\frac{1}{2} \times 8\frac{1}{2}$	" " " "	$10\frac{1}{2} \times 7\frac{3}{4} \times 1$
8×10	" " " "	$12 \times 10\frac{3}{4} \times 1$

THIS Catalogue is submitted for your inspection in the interest of the agent whose name and address will be found on the cover, and where a fresh and complete line of our goods will be found in stock.

All orders should be forwarded through them, as nothing can be obtained at our factory at a discount from list prices, except in wholesale quantities.

THE BLAIR CAMERA CO.