

ILLUSTRATED

Catalogue *
— OF —

PHOTOGRAPHIC
APPARATUS

C. H. CODMAN & CO.,
34 Bromfield Street,
BOSTON, MASS.

DESCRIPTIVE CATALOGUE

AND

PRICE LIST

OF THE

Photographic Apparatus

MANUFACTURED BY THE

ROCHESTER OPTICAL CO.

W. F. CARLTON,

PROPRIETOR AND MANAGER.

SPECIALTY: VIEW CAMERAS, FOR AMATEURS AND PROFESSIONALS.

ROCHESTER, N. Y.

Rochester Optical Co., 11 and 13 Aqueduct Street,

June, 1886.

To Our Customers.

We invite a careful and critical examination of this, our Annual Catalogue of Photographic materials, which we have the pleasure to offer.

Our goods are guaranteed to be, in every particular, exactly as represented.

Our prices will always be found as low as possible for the class of goods.

We employ only skilled workmen, the most of whom have been with us for several years ; we use nothing but selected materials, and as all our apparatus is made under our personal supervision, we can say without hesitation that our goods are unequaled for durability, workmanship, accuracy and excellence of finish.

We are progressive and improve our apparatus when found practicable, as we avail ourselves of every desirable modification of apparatus. Should these changes cause a slight departure from the printed description it will be for the better, thus adding to the cost of production, which we voluntarily assume for the benefit of our customers.

This edition supercedes all former ones.

Terms.

Prices given are net, delivered at express or freight office in Rochester.

A remittance should accompany the order.

Persons unknown to us, desiring goods sent C. O. D., must remit one-half the cost with the order. The goods will then be sent with the privilege of inspection.

Orders for shipment by freight must be accompanied by full amount of invoice.

Price of all goods fluctuate. This Catalogue gives the price at date of issue. Customers will profit by any reduction, though not aware of the change.

New customers who wish to establish a line of credit, will oblige us and avoid delay by sending approved references with order.

We pack all goods with the utmost care, and cannot be accountable for delay in transportation or breakage.

In ordering goods please state how to ship. Should this be omitted, we will use our discretion.

Small parcels which do not contain glass can be sent by mail at the risk of the purchaser. In ordering goods sent by mail, postage *must be enclosed*, otherwise goods will be sent by express.

VIEW CAMERAS.

View Cameras being our specialty, it is our aim to arrive as near perfection as possible in their construction. They are made as light and compact as possible without loss of strength and durability.

THE IDEAL.

REVERSIBLE BACK CAMERA.

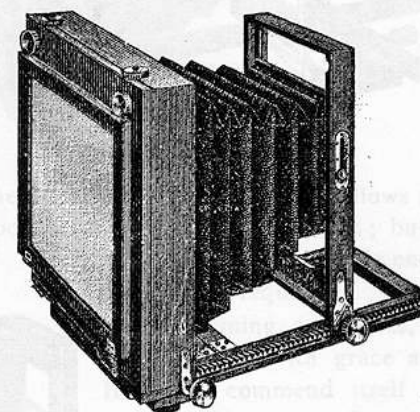


Fig. 1.

The Ideal Camera is pronounced by all to be one of the best view cameras ever placed on the market. It is the result of much study and many experiments, made with the view of producing an instrument combining all the qualities required in a View Camera for the professional or amateur photographer.

It is made from selected Honduras mahogany, finished in the best possible style, and has all latest improvements. We have spared no pains to make every working point as near perfect as possible. The camera box is square, the back being reversible, so that when a view be wanted either horizontally or vertically on plate, the change can be effected in five seconds, by simply reversing the back instead of the entire camera box. It has rack and pinion focusing movement, the front moving forward, leaving the back always stationary. When the focus has been obtained, the front is clamped by simply turning an independent milled head placed inside the one which turns the pinion. The plate-holders are held in position by two revolving cam-buttons which draw the holder tight against the camera, insuring against all possibility of leaking light; the same principle is employed for holding the reversible back in position.

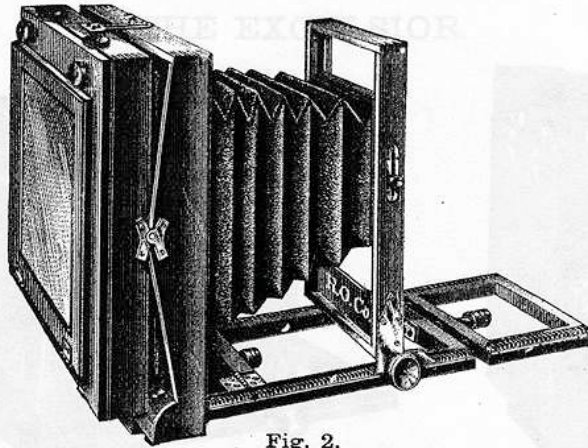


Fig. 2.

Originally the Ideal was made with the bellows so much coned as to make the front too narrow for stereoscopic work ; but we now make 5 x 7 to 8 x 10, with front wide enough for stereoscopic work, when required.

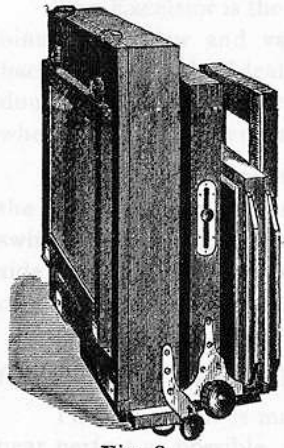


Fig. 3.

Combining, as it does, strength and steadiness, together with grace and compactness, the Ideal will commend itself to both the professional and amateur photographer. Sizes up to and including $6\frac{1}{2} \times 8\frac{1}{2}$ are made the same as Fig. 1, while 8 x 10 and above are made as Fig. 2, which is the addition of the stiff frame to which back is attached. This becomes necessary on large cameras for stability. Fig. 3 shows camera folded. It is made in both single and double swing. Price includes one English book-holder and canvas carrying-case, with straps and handle, but no lens or tripod.

PRICE LIST.

	SINGLE SWING.	DOUBLE SWING.
For view 4 x 5 in.	\$22 00	\$24 00
" " $4\frac{1}{4} \times 6\frac{1}{2}$ "	24 00	26 00
" " 5 x 7 "	26 00	28 00
" " 5 x 8 "	26 00	28 00
" " $6\frac{1}{2} \times 8\frac{1}{2}$ "	28 00	30 00
" " 8 x 10 "	34 00	38 00
" " 10 x 12 "	38 00	44 00
" " 11 x 14 "	46 00	52 00

THE EXCELSIOR.

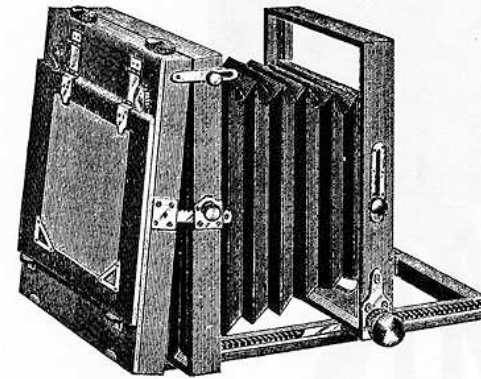


Fig. 1.

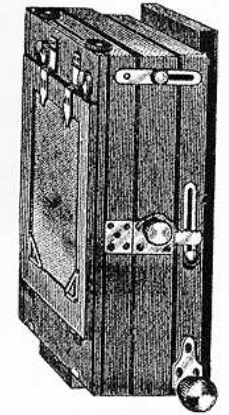


Fig. 2.

The Excelsior is the most compact square camera in market, and combines many new and valuable features. It is provided with reversible back similar to the Ideal ; the ground glass frame being provided with a double hinge, folds over on top of camera, or against the side of camera when using plates vertically.

To use the vertical swing, both sides of camera-back are moved from the rigid frame by means of a fine rack and pinion ; the back will then swing and can be clamped in any position. To use horizontal swing one side only is moved, the other remaining stationary. Owing to its peculiar construction it is only made with double swing.

Fig. 1 shows camera with back moved from the rigid frame and swung forward at top ; Fig. 2 shows camera folded.

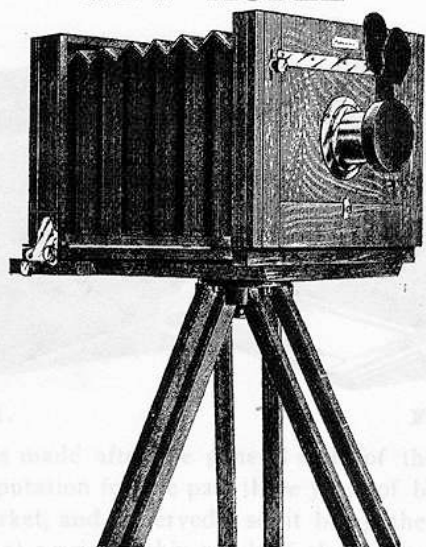
The Excelsior is made in our best style, all working parts being as near perfect as possible.

For the amateur who wants the best, we recommend the Excelsior.

Price, including canvas case and one English book holder, but no lens or tripod :

For view $3\frac{1}{4} \times 4\frac{1}{4}$ inches,	-	-	-	-	-	-	\$24 00
" " 4 x 5 "	-	-	-	-	-	-	26 00
" " $4\frac{1}{4} \times 6\frac{1}{2}$ "	-	-	-	-	-	-	28 00
" " 5 x 7 "	-	-	-	-	-	-	30 00
" " 5 x 8 "	-	-	-	-	-	-	32 00
" " $6\frac{1}{2} \times 8\frac{1}{2}$ "	-	-	-	-	-	-	34 00
" " 8 x 10 "	-	-	-	-	-	-	36 00

NEW MODEL



This Camera is well known, having been in the market for the past three years, and is conceded to be the best low-priced camera in market. It was made to meet the wants of the amateur who wished a good but cheap apparatus, and its popularity attests its merits. We have recently added several improvements, which will still increase its popularity. It is made of selected cherry, well seasoned, highly finished, with nickel trimmings. The focusing screen is hinged, which is much more convenient than where loose, as in most low-priced instruments, and less liable to loss and breakage. The Camera has folding bed, sliding front, and is reversible ; it is made both with and without swing-back.

A carrying-case is furnished with each camera, capable of holding, besides the camera, three holders, focusing cloth, etc.

Price, including R. O. Co.'s view lens, Standard tripod, carrying case and one Model plate-holder, (except 8 x 10, where neither lens or tripod are included) :

		WITHOUT SWING.	SINGLE SWING.
For view	- - - $3\frac{1}{4} \times 4\frac{1}{4}$	\$10 00	\$12 00
" "	- - - 4×5	10 00	12 00
" "	- - - $4\frac{1}{4} \times 6\frac{1}{2}$	11 00	13 00
" "	- - - 5×7	12 00	14 00
" "	- - - 5×8	12 00	14 00
" "	- - - $6\frac{1}{2} \times 8\frac{1}{2}$	14 00	16 00
" "	- - - 8×10	*15 00	*18 00

* Not including lens or tripod.

NEW MODEL IMPROVED.

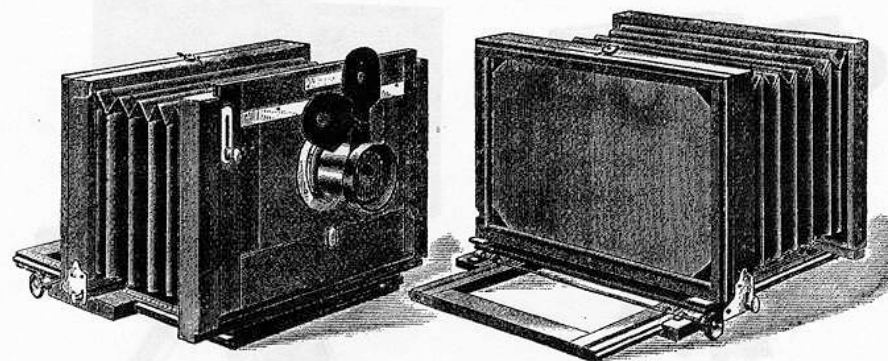


Fig. 1.

Fig. 2.

This camera is made after the general style of the New Model. It has enjoyed the reputation for the past three years of being the most popular camera in market, and deservedly so, it being the only strictly first-class camera made at a price within reach of the ordinary amateur, and is conceded to be the best camera for the price to be found in market.

It is made of the best Honduras mahogany, highly polished, with nickel trimmings ; it has sliding front, folding bed, and is reversible ; it has rack and pinion focusing movement ; the folding part is held rigid by our new clamp-hook, the quickest, easiest and best device yet used for the purpose.

Price, including R. O. Co.'s single view lens, Standard folding tripod, carrying-case and one Model plate holder, (except 8 x 10, where neither lens nor tripod are included) :

		SINGLE SWING.	DOUBLE SWING.
For view,	- - - $3\frac{1}{4} \times 4\frac{1}{4}$	\$13 00	\$15 00
" "	- - - 4×5	14 00	16 00
" "	- - - $4\frac{1}{4} \times 6\frac{1}{2}$	16 00	18 00
" "	- - - 5×7	18 00	20 00
" "	- - - 5×8	18 00	20 00
" "	- - - $6\frac{1}{2} \times 8\frac{1}{2}$	22 00	24 00
" "	- - - 8×10	*22 00	*25 00

* Not including lens or tripod.

THE COMMODORE.

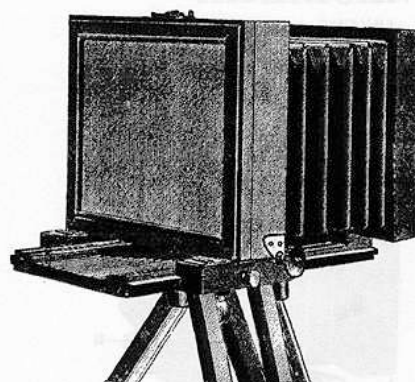


Fig. 1.

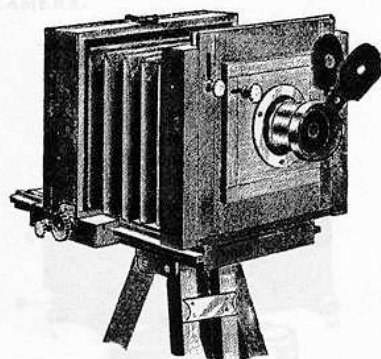


Fig. 2.

This camera was made at the suggestion of several prominent canoeists and bicyclists, who wanted a good, serviceable camera, which should be very compact and simple in mechanism.

It is made of best Honduras mahogany, highly polished, and we have spared no pains to make it the most desirable camera in market.

It has folding bed, double sliding front, rack and pinion focusing movement, is easily reversed, and has no loose parts.

Price, including R. O. Co.'s single view lens, Carlton sliding tripod, canvas carrying case, and one Model plate holder :

	WITHOUT SWING.	SINGLE SWING.
For view 4 x 5	\$14 00	\$16 00
" " 4 1/4 x 6 1/2	18 00	20 00
" " 5 x 8		22 00

AMERICAN CHALLENGE.

SWIVEL BED CAMERA.

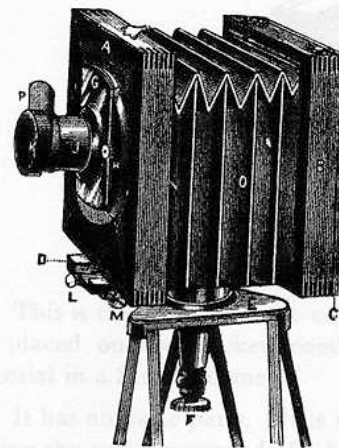


Fig. 1.

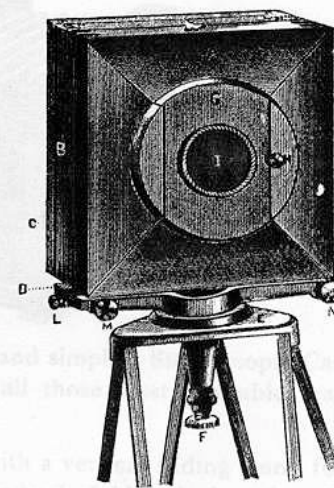


Fig. 2.

This camera is well and favorably known and is one of the most compact cameras made. It is only made in two sizes, 3 1/4 x 4 1/4 and 4 x 5.

It is made of best seasoned cherry, highly finished in the natural wood. The front is mitred in four pieces, giving it an elegant appearance. The bed is of metal, japanned, and swivels under the camera box for compactness, as shown in Fig. 2.

The camera box is made square, and as the holders are also square, they may be adjusted to camera, either vertically or horizontally, thus avoiding the necessity of reversing camera for either vertical or horizontal views. It has sliding front, which is also reversible, so that when swiveled for transportation, the lens is inside the camera-box.

The tripod head is adjustable, so that the camera may be leveled without the necessity of moving the tripod legs.

In setting up the camera the bed is swiveled from under the box ; the box is then moved back in the groove in the bed and clamped ; the front is then moved forward until it engages in the focusing screw by means of which the focus is obtained.

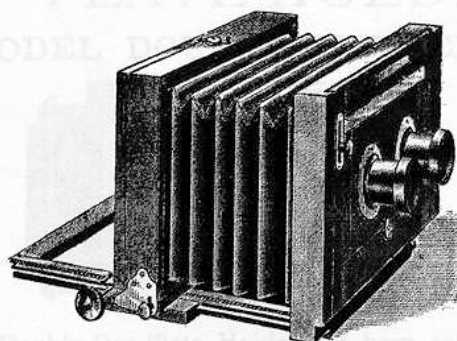
We have reduced the price on this camera. Price includes R. O. Co.'s single view lens, Standard folding tripod, carrying-case and one holder :

For view, 3 1/4 x 4 1/4,	\$8 00
" " 4 x 5,	9 00

Price of extra plate-holders for Challenge Camera :

3 1/4 x 4 1/4,	\$1 50
4 x 5,	1 50

NEW MODEL STEREOSCOPIC CAMERA.



This is the lightest, most compact and simplest Stereoscopic Camera yet placed on the market, combining all those most desirable features essential in a Stereo. Camera.

It has no loose parts. It is made with a vertical sliding front, for adjusting sky and foreground, double swing back, folding-bed, rack and pinion focusing movement, sliding tripod, canvas carrying-case.

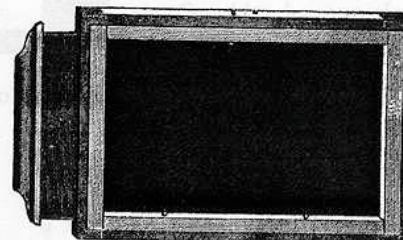
It has rubber bellows. It is made from best mahogany, highly finished with nickel trimmings. This camera will commend itself to the professional view taker, as it is indeed a model of portability. The partition may be removed, and, as the camera is reversible, *single* views may be taken, either vertically or horizontally on plate by changing the lens board.

Price, for 5 x 8 complete, including one Model Holder and pair of

R. O. Co.'s view lenses, matched,	-	-	-	-	-	\$25 00
Complete, without lenses,	-	-	-	-	-	18 00
" " " or tripod,	-	-	-	-	-	15 00

DRY PLATE-HOLDERS.

MODEL DOUBLE HOLDER.

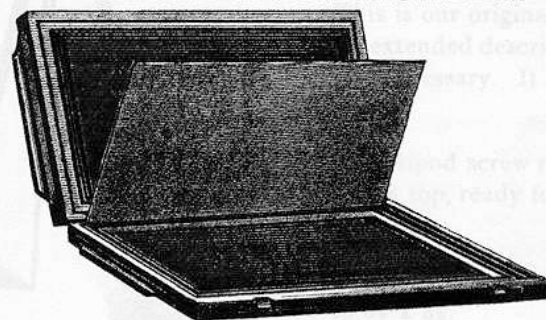


The Model Double Dry Plate Holder has been sold by us for four years and scarcely needs any detailed description. They are so arranged that the entire surface of the plate is exposed.

They will admit of the use of plates which are in length equal to the width of the holder. For example: a 4 x 5 plate can be used in a 5 x 8 holder. Kits can be used for other sizes, if desired.

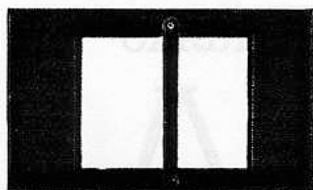
3 1/4 x 4 1/4,	-	-	\$1 50	5 x 8,	-	-	2 00
4 x 5,	-	-	1 50	6 1/2 x 8 1/2,	-	-	2 50
4 1/4 x 6 1/2,	-	-	1 75	8 x 10,	-	-	4 00
5 x 7,	-	-	2 00				

ENGLISH BOOK-HOLDER.



This is the regular English form of holder, and it has many advantages; the two sides are hinged, and open like a book, when placing or displacing the plates; the septum, for division between the two sides of holder, is also hinged, and no trouble to put in place in the dark room.

3 1/4 x 4 1/4,	-	-	\$2 00	6 1/4 x 8 1/2,	-	-	\$3 50
4 x 5,	-	-	2 25	8 x 10,	-	-	5 50
4 1/4 x 6 1/2,	-	-	2 35	10 x 12,	-	-	8 00
5 x 7,	-	-	2 50	11 x 14,	-	-	10 00
5 x 8,	-	-	2 60				



INSIDE KITS

Consist of thin wooden frames, made to fit in the Dry Plate Holder, and with rabbits for holding smaller plates.

Our kits have spring at back for holding plate in place.

4 x 5,	to hold $3\frac{1}{4} \times 4\frac{1}{4}$ plates,	-	-	-	-	\$0 30
$4\frac{1}{4} \times 6\frac{1}{2}$,	" $3\frac{1}{4} \times 4\frac{1}{4}$ "	-	-	-	-	35
5 x 7,	" $3\frac{1}{4} \times 4\frac{1}{4}$, or 4 x 5 plates,	-	-	-	-	40
5 x 8,	" 4 x 5 or $4\frac{1}{4} \times 6\frac{1}{2}$ "	-	-	-	-	40
$6\frac{1}{2} \times 8\frac{1}{2}$,	" 4 x 5, $4\frac{1}{4} \times 6\frac{1}{2}$, 5 x 7, or 5 x 8 plates	-	-	-	-	50
8 x 10,	" $4\frac{1}{4} \times 6\frac{1}{2}$, 5 x 7, 5 x 8, or $6\frac{1}{2} \times 8\frac{1}{2}$ plates,	-	-	-	-	60
10 x 12,	" 5 x 7, 5 x 8, $6\frac{1}{2} \times 8\frac{1}{2}$, or 8 x 10 "	-	-	-	-	75
11 x 14,	" 5 x 8, $6\frac{1}{2} \times 8\frac{1}{2}$, 8 x 10 or 10 x 12 "	-	-	-	-	1 00

TRIPODS.



Standard Folding Tripod.

This is our original style of Tripod, an extended description of which is hardly necessary. It is light, strong and rigid.

The tripod screw remains always in the iron top, ready for use and not liable to loss.

Price,—for cameras from 4 x 5 to $6\frac{1}{2} \times 8\frac{1}{2}$, - - - \$2 00

CARLTON'S SLIDING TRIPOD.

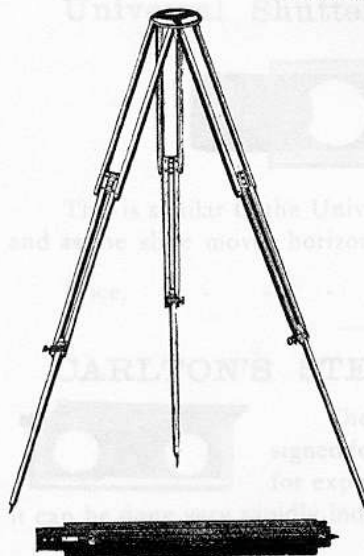


This is the simplest and best form of Sliding Tripod yet made. The legs are made in three pieces, same as the folding, which renders the tripod firmer when set up than where made of two pieces, which is the ordinary form. It is very light, strong and rigid. The especial advantages of a sliding tripod over a folding one, are ease of leveling the camera in rough places by adjusting the length of the tripod legs and the quickness with which it is set up or taken down.

No. 1,—for 4 x 5 and $4\frac{1}{4} \times 6\frac{1}{2}$ camera,	-	-	-	\$3 00
No. 2,—for 5 x 8 and $6\frac{1}{2} \times 8\frac{1}{2}$ "	-	-	-	3 50
No. 3,—for 8 x 10 and 10 x 12 "	-	-	-	4 00

COMBINATION TRIPOD.

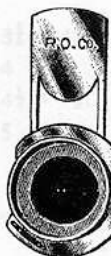
(COMBINED SLIDING AND FOLDING)



This is our latest form of Tripod, and we can confidently say it is the most convenient form of tripod ever introduced. It is jointed in three lengths, and when closed is but 22 inches long. As the lower section slides, the tripod has all the advantages of adjustment of the Sliding Tripod.

No. 1,—for cameras $3\frac{1}{4} \times 4\frac{1}{4}$ to $4\frac{1}{4} \times 6\frac{1}{2}$,	-	-	-	\$4 00
No. 2,—for cameras 5 x 8 and $6\frac{1}{2} \times 8\frac{1}{2}$,	-	-	-	4 50
No. 3,—for cameras 8 x 10 to 11 x 14,	-	-	-	5 00

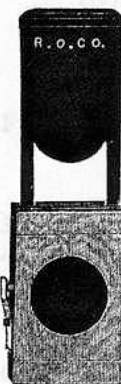
R. O. CO.'S DROP SHUTTER.



This is one of the neatest and best shutters in market, being simple, durable and convenient. The action can be readily controlled and regulated from the gravity drop to as quick an exposure as desired. It is made of brass, full nickelled.

It is made to fit over Nos. 1, 2 and 3 R. O. Co. lenses. Also, Nos. 1 and 2 Darlot Rapid Hemispherical.

Prices for any of the above sizes, - - - \$3 00



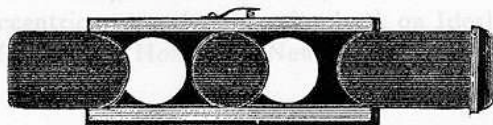
UNIVERSAL DROP SHUTTER.

This is a very simple yet effective form of shutter. The slide falls of its own weight when released, and by the use of rubber band any degree of rapidity may be obtained

The body of the shutter being of mahogany, gives it very handsome appearance. A thin strip of rubber is placed in the top of the shutter to lessen the concussion caused by the falling slide.

Price, - - - - - \$1 50

Universal Shutter for Stereoscopic Lenses.



This is similar to the Universal Drop Shutter, except for two lenses, and as the slide moves horizontally it is moved by a rubber band.

Price, - - - - - \$2 50

CARLTON'S STEREOSCOPIC EXPOSER.



The Carlton Stereoscopic Exposer is not designed for instantaneous work, but rather is a device for exposing the two lenses simultaneously, though it can be done very rapidly indeed.

Price, - - - - - \$3 00

EXTRA PARTS OF APPARATUS.

HOLDER SLIDES.

3 1/4 x 4 1/4,	- - - \$0 15	5 x 8,	- - - \$0 25
4 x 5,	- - - 15	6 1/2 x 8 1/2,	- - - 30
4 1/4 x 6 1/4,	- - - 20	8 x 10,	- - - 35
5 x 7,	- - - 20		

FRONT BOARDS.

To fit New Model, up to 6 1/2 x 8 1/2,	- - - \$0 25
" " " 8 x 10,	- - - 35
" New Model Improved, up to 6 1/2 x 8 1/2,	- - - 40
" " " 8 x 10,	- - - 50
" Ideal or Excelsior, to 6 1/2 x 8 1/2,	- - - 40
" " " 8 x 10, and above,	- - - 50
Front Board and division for Stereo. Work,	- - - 50

GROUND GLASS.

3 1/4 x 4 1/4,	- - - \$0 20	5 x 8,	- - - \$0 35
4 x 5,	- - - 20	6 1/2 x 8 1/2,	- - - 40
4 1/4 x 6 1/4,	- - - 25	8 x 10,	- - - 60
5 x 7,	- - - 30	10 x 12,	- - - 1 00

Caps for R. O. Co.'s Lenses, each,	- - - 25 cts.
Diaphragms for R. O. Co. Single View Lens, per set,	- - - 60 "
" " " Excelsior " " - - -	75 "
Cam-Buttons, for holding Holder on Ideal,	- - - 25 "
Buttons with eccentric groove for reversing back on Ideal,	- - - 25 "
Spring-Catch, for holding Holder on New Model,	- - - 35 "

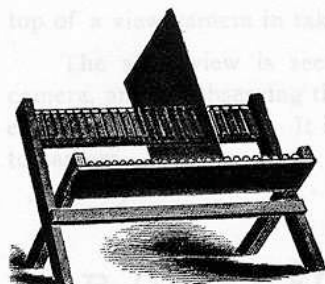
These are similar in outward appearance to the Negative Box, but are made with all joints thoroughly broken and are lined with black velvet which prevents reflection.

They are useful in the dark room, as the box of plates may be put in the safety box, saving wrapping and unwrapping them when filling the holders in a hurry.

A lock and key can be furnished with each at 75 cts. extra.

3 1/4 x 4 1/4,	- - - \$0 20	5 x 8,	- - - \$0 35
4 x 5,	- - - 20	6 1/2 x 8 1/2,	- - - 40
4 1/4 x 6 1/4,	- - - 25	8 x 10,	- - - 60
5 x 7,	- - - 30	10 x 12,	- - - 1 00

FOLDING NEGATIVE RACK.



An inexpensive and very convenient accessory for the dark room, preventing the negatives from becoming scratched while drying.

Price for plates up to $6\frac{1}{2} \times 8\frac{1}{2}$, - - \$0 50
 " " " from 8×10 to 14×17 , 1 00

NEGATIVE BOXES.



Made from selected whitewood, with hinged cover. Are exceedingly convenient for storing negatives. Each holds 24 plates.

$3\frac{1}{4} \times 4\frac{1}{4}$, - - \$0 65	5×8 - - \$0 90
4×5 , - - 70	$6\frac{1}{2} \times 8\frac{1}{2}$, - 1 00
$4\frac{1}{4} \times 6\frac{1}{2}$, - - 75	8×10 , - - 1 15
5×7 , - - 80	10×12 , - 1 75

DRY PLATE SAFETY BOXES.

These are similar in outward appearance to the Negative Box, but are made with all joints thoroughly broken and are lined with black velvet, which prevents reflection.

They are useful in the dark room, as the box of plates may be put in the safety box, saving wrapping and unwrapping them when filling the holders in a hurry.

A lock and key can be furnished with each at 75 cts. extra.

$3\frac{1}{4} \times 4\frac{1}{4}$, - - - \$0 80	5×8 , - - - \$1 20
4×5 , - - - 90	$6\frac{1}{2} \times 8\frac{1}{2}$, - - 1 35
$4\frac{1}{4} \times 6\frac{1}{2}$, - - - 1 00	8×10 , - - - 1 60
5×7 , - - - 1 10	10×12 , - - 2 25

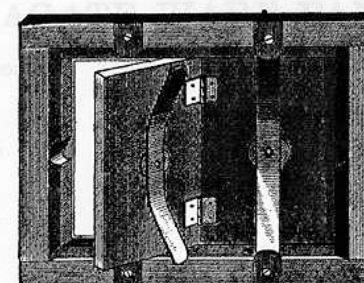
VIEW FINDER.

The View Finder is in reality a miniature camera, and is attached to top of a view camera in taking instantaneous pictures of moving objects.

The same view is seen on the small screen as is reflected in the camera, and by observing the screen of the Finder the exact moment for exposure can be told. It is made with a small attachment for attaching to camera.

Price, - - - - - \$2 00

R. O. CO.'S FLAT PRINTING FRAMES.



Our Printing Frames are constructed on an improved plan. The springs are fastened by rivets instead of screws, and have a washer placed under them to prevent wear on the wood-work.

The catch-buttons are set into the wood flush with the top, thus preventing their turning.

The back is made to open at the center or two-thirds, whichever style be wanted, though we find best sale for the latter, as it allows more of the print to be seen during printing with no danger of shifting the paper.

$3\frac{1}{4} \times 4\frac{1}{4}$, - - - \$0 45	5×8 , - - - \$0 60
4×5 , - - - 45	$6\frac{1}{2} \times 8\frac{1}{2}$, - - 70
$4\frac{1}{4} \times 6\frac{1}{2}$, - - - 55	8×10 , - - - 80
5×7 , - - - 60	10×12 , - - 1 00

JAPANNED TIN DEVELOPING TRAYS.

These Trays are made with two small ridges in bottom to prevent plate from adhering.

4×5 , each, - - - \$0 20	$6\frac{1}{2} \times 8\frac{1}{2}$, each, - - \$0 30
5×8 , " - - - 25	8×10 , " - - - 40

VULCANIZED RUBBER TRAYS.

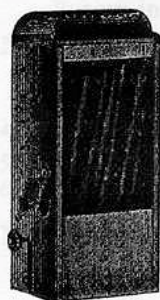
The neatest developing tray yet introduced is that made from vulcanized rubber. It has a polished surface, thus it is readily kept clean. Two slightly raised ridges on the bottom of the tray prevent the plate from adhering to the tray.

4 x 5, - - -	\$0 35	6½ x 8½, - - -	\$0 90
5 x 8, - - -	70	8 x 10, - - -	1 40

AGATE WARE PANS.

Excellent for toning. Stronger and lighter than porcelain and not liable to breakage.

7 x 9 inches, -	\$1 00	8 x 12 inches, -	\$1 50
8 x 10 " - - -	1 25	12 x 14 " - - -	1 80



POCKET RUBY LANTERN.

For general dark-room work for amateurs. Very portable.

Price, each, - - - - 50 cents.

GLASS FORMS.

FOR TRIMMING PHOTOGRAPHIC PRINTS.

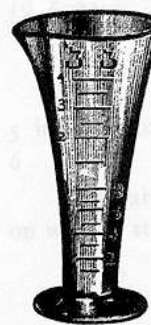
Made of glass with beveled and polished edges.

Stereoscopic, Arched Top, \$0 50	5 x 7, Square Corners, \$0 85
3¼ x 4¼, Square Corners, 50	5 x 8, " " 1 00
4 x 5, " " 60	6½ x 8½, " " 1 25
4¼ x 6¼, " " 75	8 x 10, " " 1 75

GLASS FUNNELS.

FOR FILTERING ETC.

½ Pint, - - -	\$0 20	1 Quart, - - -	\$0 30
1 " - - -	25	2 " - - -	40



GRADUATED GLASSES.

FOR MEASURING LIQUIDS.

Minim, - - - - -	\$0 25
1 ounce, - - - - -	25
2 " - - - - -	30
4 " - - - - -	35
6 " - - - - -	50
8 " - - - - -	60
12 " - - - - -	85
16 " - - - - -	1 00

CARD MOUNTS.

The appearance of the finished photograph depends in no small degree on the manner in which it is mounted. A good photograph is worthy of a good card mount.

Put up in packages of two dozen each.

No. 1--PLAIN BACK AND FACE ASSORTED COLORS.

SIZE.	PRICE.
4 x 5, per package, -	\$0 30
5 x 8, " " - - -	55
6½ x 8½, " " - - -	80

No. 2--ENAMELED FIGURED BACK, PLAIN FACE, ASSOR'D COLORS.

4 x 5, per package, -	\$0 40
5 x 8, " " - - -	75
6½ x 8½, " " - - -	90
8 x 10, " " - - -	1 30

No. 3--INDIA TINT, WITH WIDE WHITE BORDER, SUITABLE FOR FRAMING.

4 x 5, per package, -	\$0 70
5 x 8, " " - - -	1 10
6½ x 8½, " " - - -	1 40
8 x 10, " " - - -	1 80

No. 4--AMBER, WITH GILT BEVELED EDGE.

SIZE.	PRICE.
4 x 5, per package, -	\$0 60
5 x 8, " " - - -	1 00
6½ x 8½, " " - - -	1 40
8 x 10, " " - - -	2 00

No. 5--BOTTLE GREEN, WITH GILT BEVELED EDGE.

4 x 5, per package, -	\$0 65
5 x 8, " " - - -	1 20
6½ x 8½, " " - - -	1 50
8 x 10, " " - - -	2 25

No. 6--MAROON FACE, GREY BACK WITH GILT BEVELED EDGE.

4 x 5, per package, -	\$0 70
5 x 8, " " - - -	1 20
6½ x 8½, " " - - -	1 50
8 x 10, " " - - -	2 25

BLOTTING PAPER.

EXTRA HEAVY WHITE, FOR DRYING PHOTOGRAPHIC PRINTS.

9 x 12 inches, per dozen sheets,	\$0 40
12 x 19 " " " " " " " "	75
19 x 24 " " " " " " " "	1 50

SCALES AND WEIGHTS.

5 inch beam, weighing grains and drams,	\$0 75
6 " " " " " " " "	1 00

Standard Scale, 5½ inch beam, 2 inch brass pans with upright beam, on walnut stand; all packs in drawer.

Price, - - - - - \$5 50

CAMEL'S HAIR BRUSHES.

FOR DUSTING OFF PLATES BEFORE EXPOSURE AND FOR MOUNTING.

1 inch wide, - - 25 cts.	2 inch wide, - - 40 cts.
1½ " " - - 30 " "	2½ " " - - 50 " "

BRISTLE BRUSHES.

FOR MOUNTING OR VARNISHING.

1 inch wide, - - 15 cts.	2 inch wide, - - 30 cts.
1½ " " - - 20 " "	2½ " " - - 40 " "

OTHER ACCESSORIES.

Negative Varnish, (4 oz. bottle),	each	\$0 40
Concentrated Intensifier, (4 oz. bottle),	"	25
Chloride of Gold, (15 grain bottle),	"	75
Acetate of Soda, (2 oz. bottle),	"	10
Hypo-Sulphite Soda, (1 lb. box),	"	10
Concentrated Developer, No. 1, (6 oz. bottle),	"	50
" No. 2, (6 oz. bottle),	"	20
Focusing Cloths, Velvet or Gossamer,	"	1 00
Stronger Water Ammonia, (4 oz. bottle),	"	15
Pyrogallic Acid,	per ounce,	50
Sulphite of Soda,	per pound,	25
Carbonate of Potash,	"	25
Bromide Ammonia,	per ounce,	10
Bi-Carbonate of Soda,	"	10
Carbonate of Soda,	"	10

READY-SENSITIZED ALBUMEN PAPER.

This paper is imported by us and will be found to be of the finest quality and of uniform sensitiveness, and will tone rapidly.

Put up in light-tight packages of two dozen sheets, except 18 x 22, which are in rolls of one dozen sheets.

3¼ x 4¼, per package,	\$0 35
4 x 5, " " " " " "	40
4¼ x 6½, " " " " " "	60
5 x 8, " " " " " "	80
6½ x 8½, " " " " " "	1 10
8 x 10, " " " " " "	1 60
18 x 22, per roll,	3 50

FERRO-PRUSSIAN OR BLUE PAPER.

FOR MAKING BLUE AND WHITE PICTURES.

This paper is extremely simple in its manipulation, as it requires no toning and is very convenient for making proofs from negatives. It is also adapted for architects and for reproductions of machinery, etc., for an engraver to copy from. The rapidity with which a print can be made is a great recommendation in its favor.

Put up in light-tight packages of two dozen sheets.

3¼ x 4¼, per package,	\$0 20	5 x 8, per package,	\$0 40
4 x 5, " " " " " "	20	6½ x 8½, " " " " " "	50
4¼ x 6½, " " " " " "	30	8 x 10, " " " " " "	75

DRY PLATES.

We sell several makes of Dry Plates, among them being Forbes', Inglis', Cramer's and Eastman's.

	PER DOZ.		PER DOZ.
3¼ x 4¼, - - - -	\$0 45	6½ x 8½, - - - -	\$1 65
4 x 5, - - - -	65	8 x 10, - - - -	2 40
4¼ x 6½, - - - -	90	10 x 12, - - - -	3 80
5 x 7, - - - -	1 10	11 x 14, - - - -	5 00
5 x 8, - - - -	1 25		

ABSORBENT COTTON.

FOR FILTERING PHOTOGRAPHIC SOLUTIONS.

2 oz. Parcel, - - - -	\$0 20	8 oz. Parcel, - - - -	\$0 50
4 oz. " " " " " "	30	1 lb. " " " " " "	80