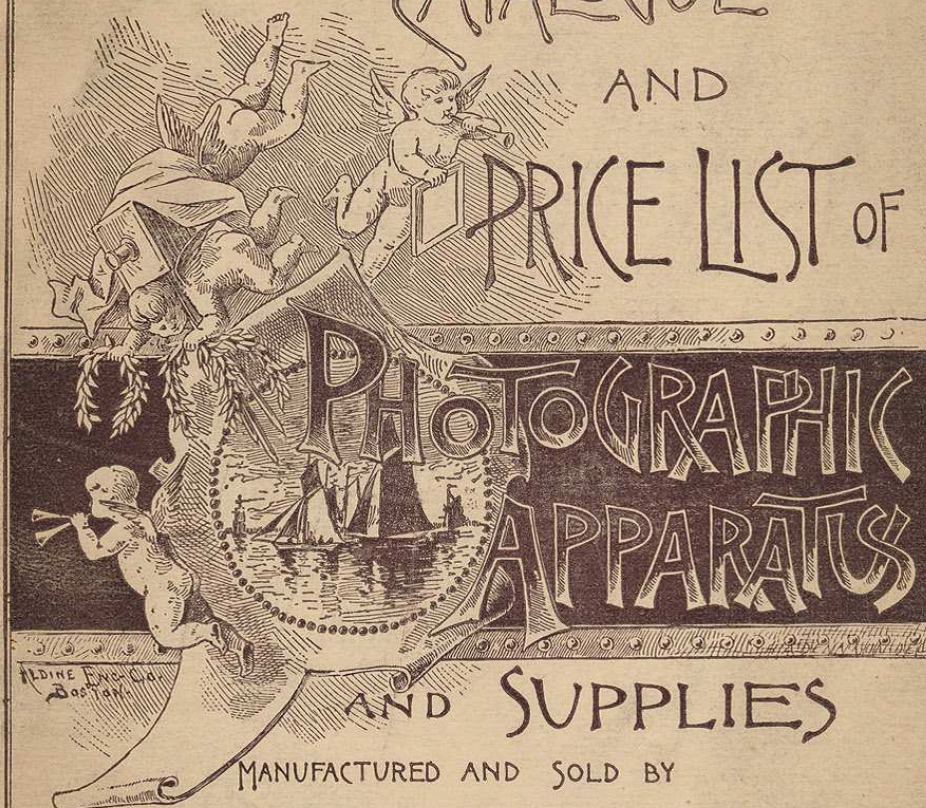


ILLUSTRATED
CATALOGUE

AND

PRICE LIST OF



MANUFACTURED AND SOLD BY

THE BLAIR CAMERA CO.

— SECTION A —

FACTORIES

BOSTON AND PAWTUCKET
WAREHOUSES

471 TREMONT ST., BOSTON.

245 247 STATE ST., CHICAGO

HEADQUARTERS IN EUROPE
.....

THE EUROPEAN BLAIR CAMERA CO. LTD.

9 SOUTHAMPTON ST., HIGH HOLBORN, W.C.

..... LONDON

THIS EDITION REPRESENTS SECTION "A" ONLY.

THE wisdom of our long-standing rule, as stated in previous editions, to condense when possible, has been demonstrated by the large call for our Catalogue from the Trade, the Profession and the Amateur, and the constant increase in our business.

We list only such goods as are in active demand, not offering hundreds of articles which the Photographer never buys or uses, simply to make the boast "We issue the largest catalogue published."

We feel confident that we have unsurpassed facilities for catering to the wants of the Photographic trade, having our own warerooms in New York and Chicago, as well as a large jobbing trade, and agencies and connections which warrant us in manufacturing or ordering in large quantities, thus enabling us to turn our goods quickly and at a small margin of profit.

The Ninth edition of our complete Catalogue will be found arranged in two sections, classified as follows:—

Section A comprises goods of our own manufacture, or those controlled by us, only.

Section B comprises goods kept in stock or sold by us, not of our manufacture.

We issue no separate catalogue for the use of Professionals and Amateurs, but present to both, in our complete catalogue, such goods as we feel that they will need, arranged in such a manner, we trust, that either can readily make selections according to their wants.

We have aimed to provide for the most fastidious.

THE BLAIR CAMERA CO.

Boston, 1893.

THIS EDITION REPRESENTS SECTION "A" ONLY.

LP1103

ILLUSTRATED CATALOGUE

AND

Price List

OF

PHOTOGRAPHIC APPARATUS

AND

SUPPLIES.

MANUFACTURED AND SOLD BY

THE BLAIR CAMERA COMPANY,

Warerooms: BOSTON, NEW YORK, CHICAGO.

Factories: BOSTON, MASS., and PAWTUCKET, R.I.

Headquarters in Europe:

THE EUROPEAN BLAIR CAMERA CO., L^{td}.,

9 Southampton St., High Holborn, W.C.,

LONDON, ENG.

PUBLISHED BY

THE BLAIR CAMERA COMPANY,

BOSTON, NEW YORK, CHICAGO.

1893.

REASONS WHY
BLAIR'S REVERSIBLE BACK CAMERAS
ARE SUPERIOR TO ALL OTHERS.

THEY are constructed to receive our Patent Extension for making negatives larger than the Camera proper. No fitting or extra charge is made, as is the case when putting our Patent Extension on Cameras of others' make. Our Adjuster and Plate-Holders are attached by a system of groove and springs which leave no screw or pin sticking out above the surface to scratch and injure the polish or hands. These Cameras are fitted with our Popular Patent Reversible Adjuster, having Spring Actuated Ground Glass Frame. This method of removing the Ground Glass Frame from contact with the Camera and keeping the Plate-Holder in position during exposure, is superior to all other methods. No better evidence of this fact is needed than the attempts of other manufacturers to copy it.

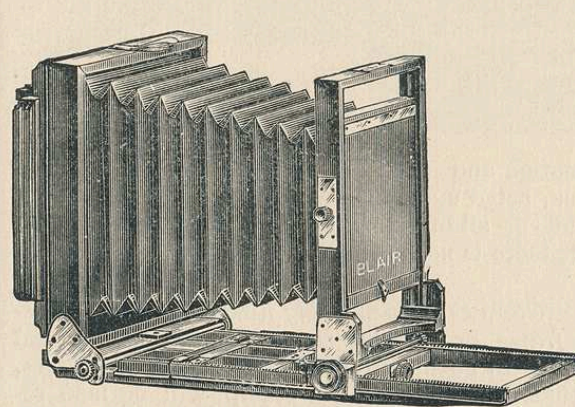
Our Cameras possess a greater focussing capacity (length of bellows) than any others, thus enabling the operator to use any make or style of lens without Extension fronts. Dealers in photographic apparatus say they are not asked to exchange our Cameras, because they are found to meet all the requirements of the photographer, whether amateur or professional.

Our Apparatus is made on a system of interchangeable parts. The above facts of superiority in utility, in connection with the beauty of style, designs, and finish, and superior quality of workmanship, place **BLAIR'S CAMERAS** ahead of all others.

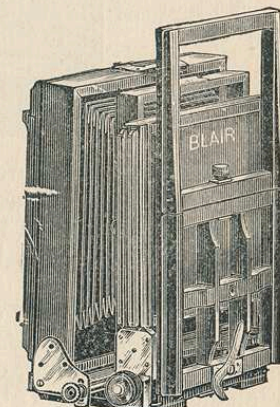
Ask to be shown the latest styles, and insist upon seeing them.

CATALOGUE
OF
PHOTOGRAPHIC APPARATUS.

Blair's Improved Reversible Back Cameras.



Nos. 1500-1505 EXTENDED.



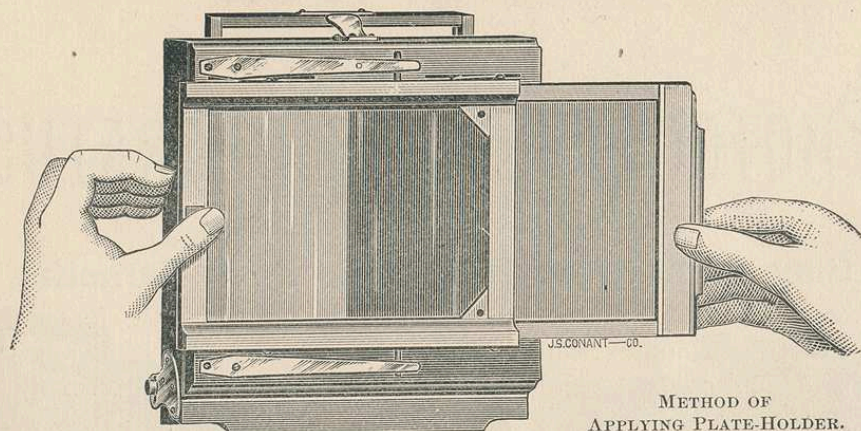
Nos. 1500-1505 FOLDED.

Although not as expensive a camera as the Compact (a description of which follows), yet for general work it is nearly as desirable, having the essential qualities of lightness and rigidity. The fact that there are several thousands in use, with the demand increasing every month, speaks more for their good qualities than would volumes from us. They are made entirely of the best selected mahogany, seasoned several months, are highly polished, and trimmed with hand-finished, lacquered brass mountings. Nickel trimmings to order.

The focussing is achieved by the front of camera and lens moving forward by a fine rack and pinion movement. By this method of construction and the Reversible Back, the slide from the plate-holder can be drawn to the right or left when in a horizontal position, or when changed to the vertical position can be drawn upward or downward. The desirability of this will be apparent to every photographer of experience. The reversing of the back (to enable the operator to make upright views) is accomplished by simply pressing a spring and changing the adjuster carrying the holder, from vertical to horizontal.

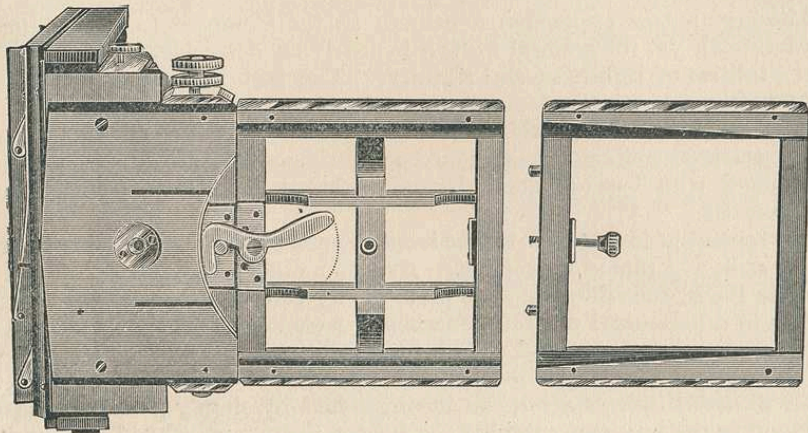
The sliding front is arranged so that the entire front, with bellows attached, slides up or down, and is held rigid, by the adjusting screw. It is thus less liable to leak light than the old form.

Another most unique part in its construction is the means of attaching the plate-holder and ground glass. The latter is attached by all four corners, and kept in position, wherever it may come to a bearing, by springs, and when the plate-holder is to be attached, the sideways movement of a couple of inches causes it to recede sufficiently for the holder to be slid in freely.

METHOD OF
APPLYING PLATE-HOLDER.

without a spring to retard its motion and jar the camera; and when in position, and the ground-glass frame, acted upon by the spring, is released, the latter lies firmly behind the holder — all of which is accomplished without the touching of a catch (as, indeed, there is none), or removing or swinging the ground-glass frame.

All *Spring Actuated Ground-Glass Frames movably fixed to allow the Plate-Holder to be placed behind the frame* are *infringements on our patents*, and persons manufacturing, or causing to be manufactured, or selling adjusters, or adapters (so called) other than those bearing our stamp, will be held responsible for such infringement.



SECTIONS OF THE BED.

The bed is made in three sections, the outer or third one removable for all ordinary work; this section will not as a rule be required in the field. *The method of clamping the hinged joint* of first and second sections in the bed, in all sizes above $4\frac{1}{4} \times 5\frac{1}{2}$, is such that it can be done quickly, and by pressure on the outer end of the hook lever it becomes tighter as the pressure is increased, thus combining the well-known merits of the screw-clamp, and the ease and rapidity of this movement. The bed, in all sizes above $4\frac{1}{4} \times 5\frac{1}{2}$, is constructed with arrangements for attaching the tripod in

two different places, thus allowing the camera to be properly balanced on the tripod, when using lenses of extra long focal length, or when using an extension. Unless otherwise specified, all orders for these cameras will be filled fitted with Feather-Weight Holders.

ANY COMBINATION for different sizes of cameras can be made by using adjusters for smaller plate-holders than the original size of the camera proper.

By removing the Reversible Back Adjuster and applying our Patent Extensions (reversible), we have a camera enabling the operator to use a size larger plate. (See Extension List, page 9.)

PRICE LIST OF "IMPROVED" REVERSIBLE BACK CAMERAS.

No.	Size of Plate.	Size of Lens Board.	Capacity for Length of Focus.	Price Single Swing.	Price Double Swing.
1500	4 × 5	3 $\frac{3}{8}$ in. sq.	12 in.	\$23.00	\$25.00
1501	4 $\frac{1}{4}$ × 5 $\frac{1}{2}$	3 $\frac{3}{8}$ "	14 $\frac{1}{2}$ in.	28.00	30.00
1506	5 × 7	4 $\frac{1}{2}$ "	17 in.	31.00	33.00
1507	5 × 8	6 "	18 in.	35.00	37.00
1507A	6 $\frac{1}{2}$ × 8 $\frac{1}{2}$	6 "	18 in.	35.00	37.00
1508	8 × 10	7 $\frac{1}{2}$ × 6 in.	20 in.	40.00	43.00

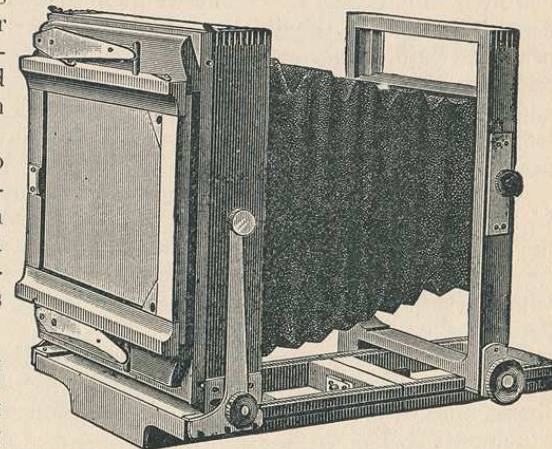
The above prices include one double holder and carrying case with each camera. Cases are made to carry three and six Feather-Weight Holders. Please state which is desired when ordering.

Improved Central Swing Back.

We have for several years supplied special styles of our Reversible Back Cameras having the swing back pivoted through the centre, as shown in annexed illustration.

Some prefer this pattern to the regular swing back, pivoted at bottom, as shown in other illustrations, on the ground that an equal range of adjustment is obtained with less movement of the back.

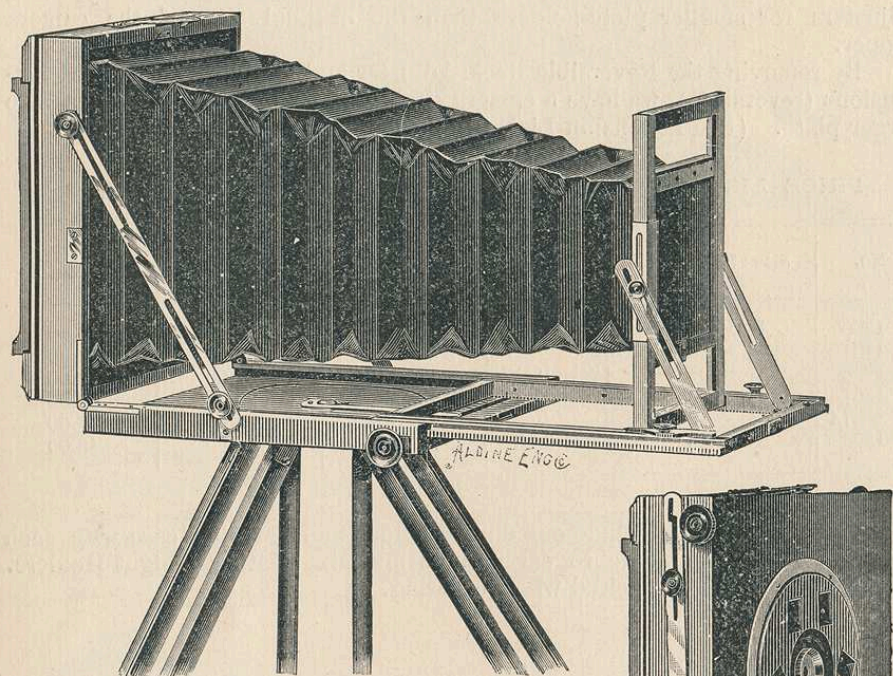
We will, when requested in orders, supply the Improved or Cincinnati Reversible Back Cameras with central swing back at regular prices.



SHOWING No. 1402 WITH CENTRAL SWING BACK.

The English Compact Reversible Back Camera.

PATENTED.



Nos. 1406-1409 FULLY OPENED.

As the title infers, compactness is the principal feature of this Camera. While we have in it all the desirable facilities possible, combining great lightness with rigidity, perfection of detail with simplicity and ease of working, we have in the smallest space, and with the least weight, every convenience and facility, with several new movements and devices peculiar to this Camera alone.

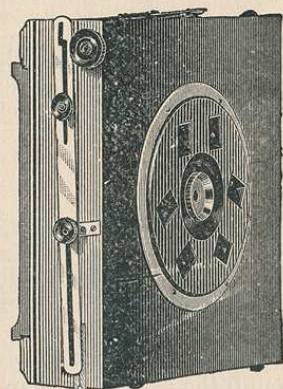
The Camera, when closed, measures in thickness in the 5×7 , 5×8 , and $6\frac{1}{2} \times 8\frac{1}{2}$ size, $3\frac{1}{2}$ inches; in the 8×10 , 4 inches. The partial front view of the Camera, folded, shows the sunken tripod top, with clamping screw in centre, the centre of which (the clamping screw) is bored to receive a regulation tripod screw, thus enabling the operator to use any other form of tripod than that supplied with the Camera.

These Cameras are arranged to use the Blair Rigid Extension.

Adjusters or rigid form extensions fitted to these Cameras are interchangeable with those belonging to the Improved Reversible, and Improved Cincinnati R. B.

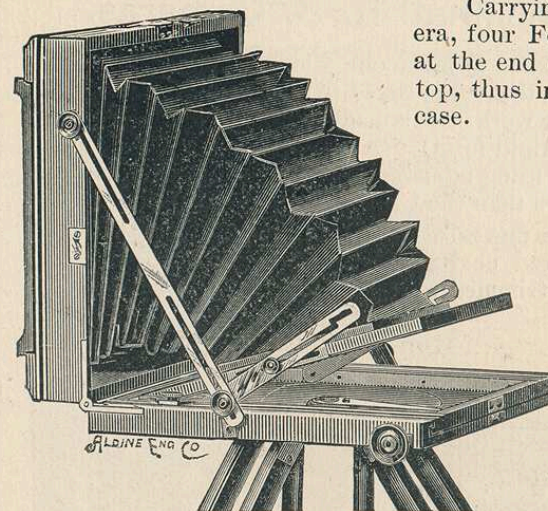
Unless otherwise specified, all orders for these Cameras will be filled fitted with Feather-Weight Holders.

The price includes one F. W. Mahogany Plate Holder, fitted with hard rubber slides, Special Compact Tripod and Carrying Case.

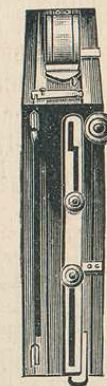


Nos. 1406-1409 FOLDED.

Carrying Cases are made to carry Camera, four Feather-Weight Holders arranged at the end of the Camera, with Tripod on top, thus including the entire outfit in the case.



Nos. 1406-1409 PARTLY OPENED.



Nos. 1406-1409 FOLDED.

The $3\frac{1}{4} \times 4\frac{1}{4}$ and 4×5 have metal tripod top, instead of wood, which are not sunk as deep as the wooden tops.

Our English Compact is the perfection of high grade view cameras, and in this class of apparatus is WITHOUT AN EQUAL IN THE WORLD. The Cameras and Holders supplied with them, are made of best selected mahogany, French polished, and trimmed with hand-finished brass mountings. In convenience, in style, and in finish they are beyond criticism.

PRICE LIST ENGLISH COMPACT R. B. CAMERAS.

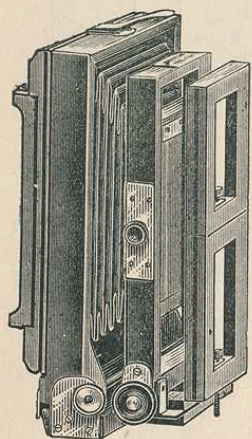
No.	SIZE.	SIZE OF LENS BOARD.	CAPACITY FOR LENGTH OF FOCUS.	PRICE OF DOUBLE SWING.
1406 A	$3\frac{1}{4} \times 4\frac{1}{4}$	$2\frac{1}{4} \times 3\frac{1}{4}$	12 in.	\$40 00
1407 A	4×5	$2\frac{1}{4} \times 3\frac{1}{4}$	14 "	40 00
1406	5×7	$3\frac{3}{8}$ in. sq.	17 "	45 00
1407	5×8	$4\frac{1}{2}$ "	18 "	50 00
1408	$6\frac{1}{2} \times 8\frac{1}{2}$	$4\frac{1}{2}$ "	18 "	50 00
1409	8×10	6 "	20 "	55 00
1410	10×12	$6 \times 7\frac{1}{2}$	26 "	65 00

NOTE: The English Compact Cameras are now ALL made with DOUBLE SWING and so constructed that the back may be moved forward when using extreme wide angle lens, to avoid interference with the bed.

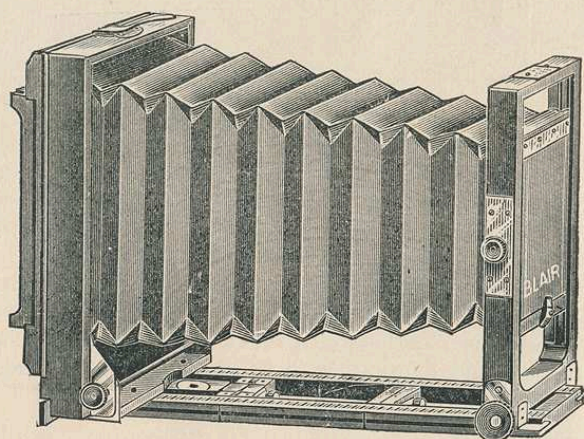
The Improved Cincinnati R. B. Cameras.

In this Camera we have designed to make one which, though thoroughly well made, is less expensive than the "Improved R. B. Camera," and yet complete and quickly adjusted for work. It is made to receive our well-known Patent Adjuster and Extension (rigid form). Any combination for different sizes of Cameras can be made by using adjusters for smaller plate-holders and extensions for larger plate-holders than the Camera proper.

The focusing is attained by a fine rack and pinion movement. They are made entirely of the best selected cherry and mahogany, seasoned several months, are highly polished and trimmed with hand-finished brass mountings.



Nos. 1400-1405. FOLDED.



Nos. 1400-1405. EXTENDED.

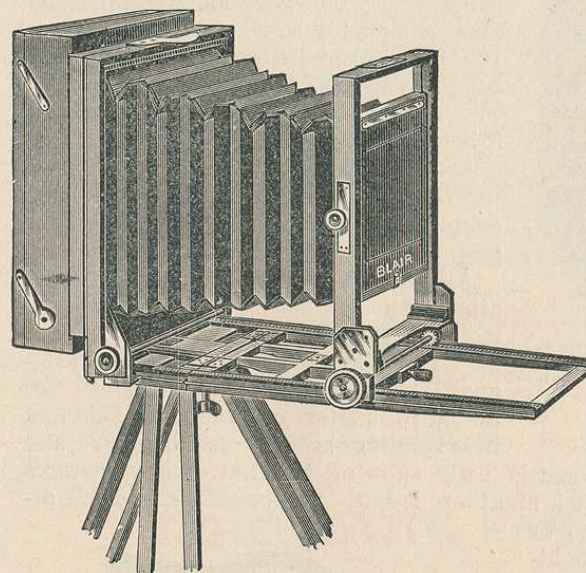
Unless otherwise specified, all orders for these Cameras will be filled, fitted with Feather-Weight Holders. When English or Blair Patent are wanted, please specify. By removing the Reversible Back Adjuster and applying our Patent Extension (reversible) we have a Camera enabling the operator to use a size larger plate. The price includes one Double Plate-Holder and Carrying Case.

PRICE LIST IMPROVED CINCINNATI R. B. CAMERAS.

No.	SIZE OF PLATE.	SIZE OF LENS BOARD.	CAPACITY FOR LENGTH OF FOCUS.	PRICE.	
				S. S.	D. S.
1400	4 × 5	3 3/8 in sq.	9 in.	\$20 00	\$22 00
1401	4 1/4 × 5 1/2	3 3/8 "	10 1/2 "	22 00	24 00
1402	5 × 7	4 1/2 "	12 1/2 "	28 00	30 00
1403	5 × 8	6 "	14 "	30 00	32 00
1404	6 1/2 × 8 1/2	6 "	14 "	30 00	32 00
1405	8 × 10	7 1/2 × 6 in.	17 "	35 00	38 00

Blair's Patent Extensions.

The only practical device for using plates of a larger size than provided for by the camera proper.



New Model Extension applied to Improved Reversible Back Camera.

No. 1543 attached to 1503.

It often occurs that the possessor of a camera desires *very much* to make an occasional picture larger than his camera is capable of making.

BLAIR'S PATENT EXTENSION is an article which meets this want, being a contrivance for placing the plate a sufficient distance from the back of Camera proper to allow the rays to spread to the size of plate to be used on the Extension.

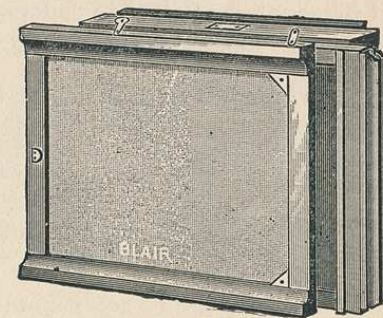
Thus, one Camera may be made to answer the purpose of two with a saving in time, money, and convenience.

The illustrations will show at a glance the design of the Extension and method of attaching to the camera. Extensions may be applied to any of our "Improved," "Cincinnati," or "Compact" Reversible Back Cameras, without fitting, and fitted to any similar camera of other makers at an extra expense rarely exceeding two dollars.

REDUCED PRICE LIST OF EXTENSIONS.

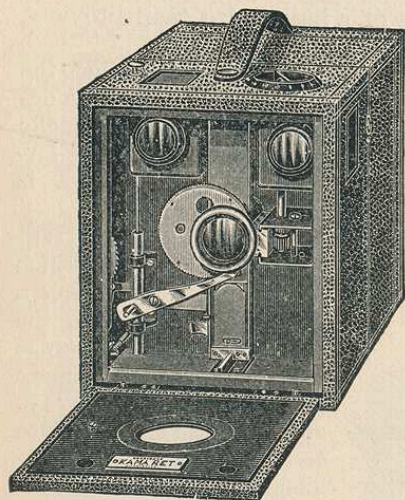
Prices include one F. W. Holder and canvas carrying case, with strap and handle, French polish.

1540	5 × 8	Extension for 4 1/4 × 5 1/2 Camera.	\$5 00
1541	6 1/2 × 8 1/2	" " 5 × 7 "	7 00
1542	8 × 10	" " 5 × 7 "	7 00
1543	8 × 10	" " 5 × 8 "	7 00
1544	8 × 10	" " 6 1/2 × 8 1/2 "	7 00
1545	10 × 12	" " 5 × 8 "	9 00
1546	10 × 12	" " 6 1/2 × 8 1/2 "	9 00
1547	11 × 14	" " 5 × 8 "	11 00
1548	11 × 14	" " 6 1/2 × 8 1/2 "	11 00
1549	11 × 14	" " 8 × 10 "	11 00
1549A	11 × 14	" " 10 × 12 "	11 00
1549B	14 × 17	" " 8 × 10 "	13 00



New Model Extension with spring actuated ground-glass and Feather Weight Holder.
No. 1540-1547.

THE KAMARET.



No. 1535 AND 1536.

is also provided with an Automatic Tally showing just how many pictures have been taken and how much film there is left. A double swing-back attachment for using glass plates or cut films in the regular double holder, may be obtained and applied to the Kamaret without fitting.

Other points of superiority are the easy manner of removing the film roll and reloading the Kamaret; the beautiful finish and thorough mechanism of the working parts, the clear, clean-cut work of the lens, the liberal size and brilliant illumination of the two finders, and fine quality of the leather covering.

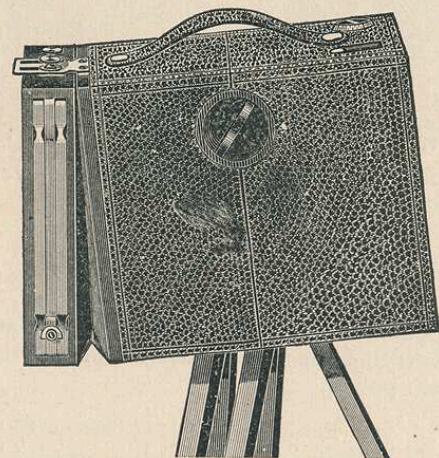
The film rolls may be returned to us to have the pictures developed and printed, or we will supply an outfit for such purpose, as preferred.

The Kamaret Booklet, with more complete description, will be sent on application.

PRICE LIST.

- No. 1535. The Kamaret fitted with double combination Rapid Rectilinear Lens, loaded for 50 exposures, and with leather carrying case \$40 00
- " 1537. Double Swing Attachment for glass plates or cut films, with one F. W. Holder 5 00

(The 4×5 Kamaret uses $4\frac{1}{4}$ inch film. For price list, see page 43.)



No. 1535 WITH No. 1537 ATTACHED.

Compactness without folding is the prominent feature of the Kamaret, it being nearly one-third smaller than any other camera of equal capacity, viz.:—100 4×5 pictures without reloading. Size complete $5\frac{1}{2} \times 6\frac{1}{2} \times 8\frac{3}{4}$ inches.

To make exposures with the Kamaret it is only necessary to push a spring when a picture is to be taken.

The same spring when pulled out again after winding up the used film, prepares the camera for the next picture.

All other cameras have an additional attachment for setting the shutter—one more thing to be looked after

The Kamaret has a positive safeguard against "double exposures" (or taking two pictures on the same field and thus spoiling both) and "blanks," and

THE 5×7 KAMARET.

No. 1536.

Heretofore all 5×7 "hand" cameras of the rigid form have been too bulky to be convenient or popular. By means of the Kamaret system of carrying the film rolls in the forward part of the camera, in front of the plane of focus, we are enabled to construct a camera with a capacity of fifty 5×7 pictures without reloading, measuring only $6\frac{1}{2} \times 8\frac{1}{2} \times 10\frac{1}{2}$ inches, which is scarcely larger than an ordinary 4×5 hand camera.

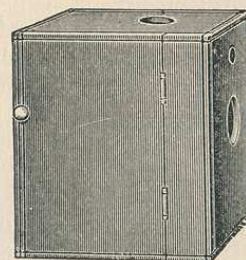
The 5×7 Kamaret is identical with the 4×5, in design and finish, and the fact that these cameras in either size are always ready for use with no adjustment required other than to turn the focusing screw, makes them particularly desirable for tourists.

PRICE LIST.

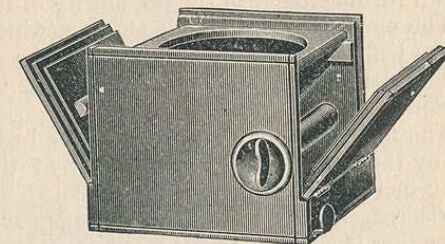
- No. 1536. The 5×7 Kamaret, with Rapid Rectilinear Lens, loaded for 25 exposures, and with leather carrying case . . . \$53 00
- Same as the above, loaded for 50 exposures . . . 56 00
- No. 1538. Double Swing Attachment for glass plates or cut films, with one F. W. Holder 6 00

(The 5×7 Kamaret uses $5\frac{1}{4}$ inch film. For price list see page 43.)

THE PETITE KAMARETTE.



No. 1534 CLOSED.



No. 1534 OPENED WITH BACK DETACHED.

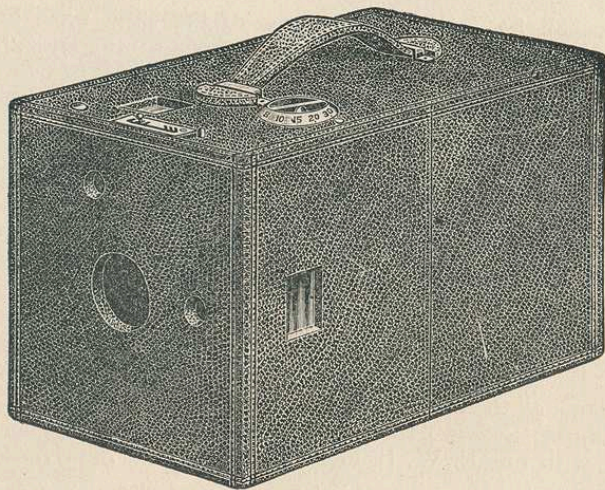
The "Petite" Kamarette measures only $4\frac{1}{4} \times 4\frac{1}{2} \times 5$ inches, weighs only 25 ounces, and makes round pictures $3\frac{1}{2}$ inches in diameter.

It is constructed on the same general plan as the larger Kamarets, and is operated in the same manner, excepting that the method of taking apart for loading is somewhat different, as shown by the illustration. Covered with genuine morocco and very beautifully finished, the Petite is particularly desirable as a ladies camera, and makes a unique and acceptable birthday or wedding gift.

Price complete with carrying case and loaded for 50 exposures, \$15 00.

(The Petite Kamarette uses $3\frac{3}{4}$ inch film. For price list, see page 43.)

THE HAWK-EYE.



NO. 1523.

The Hawk-Eye maintains its position as the leading camera for all-around use, having had the largest sale of any combined plate and film camera ever placed on the market.

Several new improvements have been made in the 1891 model, which will still further increase the popularity of the Hawk-Eye.

The method of setting the shutter (which is of the adjustable speed, safety type, as before) has been simplified, and a new time-exposure stop, which is in quickness and convenience fully equal to a pneumatic release, has been provided.

The focusing index and screw have been combined in one part and located close by the push-button; the rigidity of the inside bellows frame has been greatly increased; and, last but not least, the width of the Hawk-Eye has been decreased nearly an inch, thus improving the appearance of the camera and making it a better shape to carry.

Feather-Weight Holders for glass plates or cut films, or an improved roll holder with automatic tally, containing transparent film for 25 to 100 exposures without reloading may be used in the same camera.

Both vertical and horizontal finders, interior ground-glass screen, and two tripod plates for time work are provided.

Lenses of other make, provided they are of suitable size and focal length, may be fitted to the Hawk-Eye if preferred.

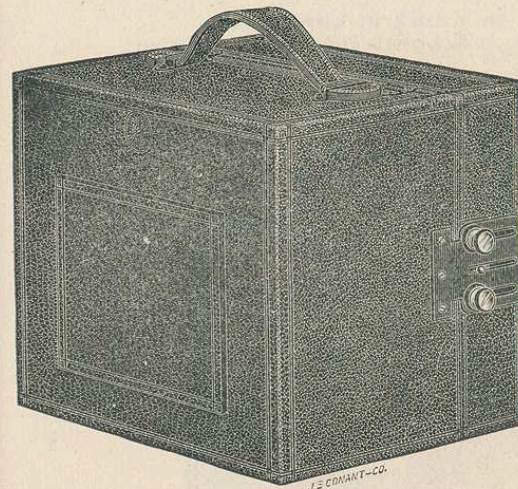
The Hawk-Eye booklet, with complete description, will be sent upon application.

PRICE LIST.

No. 1523.	The Hawk-Eye Camera, 4×5, polished wood case .	\$15 00
" 1525.	Same as above, covered with black grain leather .	18 00
" 1531.	Improved Roll Holder with Automatic Tally (empty) .	7 00
" 1575.	Blair Rapid Rectilinear Lens (see page) .	12 00
" 1653.	Taylor & Hobson Lens, with Revolving Diaphragm .	15 00
	" " " Iris .	25 00

(The 4×5 Hawk-Eye Roll Holder uses 4 inch film. For price list, see page 43.)

THE 5×7 FOLDING HAWK-EYE, No. 1.



NO. 1527 FOLDED.

Size 7×7½×9 inches. Makes 5×7 pictures. Carries three double holders for glass plates or cut films, or automatic tally Roll Holder for 50 continuous exposures.

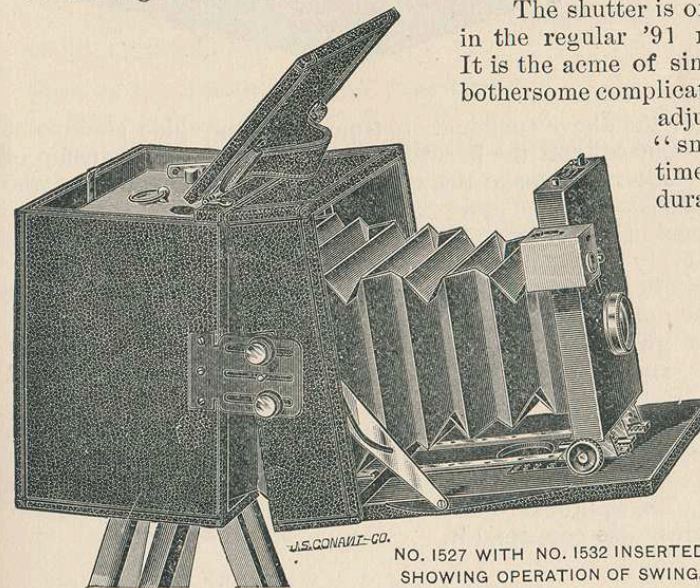
In the Folding Hawk-Eye the same elements of popularity found in the original model have been preserved, and in addition a Double Swing is provided; so that as well as being an extremely convenient and portable hand camera, it also affords, with the addition of a tripod, a very complete view outfit, having fine "rack and pinion" focal adjustment and ground-glass screen, and is adapted to nearly every

requirement.

Plate holders or roll holder are adjusted in exactly the same manner the "connecting frame" used in other cameras not being required.

The shutter is of the same style as in the regular '91 model Hawk-Eye. It is the acme of simplicity; free from bothersome complications, and instantly adjustable in speed for "snap shots" or for time exposures of any duration.

The lens is a double achromatic Rapid Rectilinear, of excellent working capacity, and is provided with revolving diaphragm.



NO. 1527 WITH NO. 1532 INSERTED, SHOWING OPERATION OF SWING.

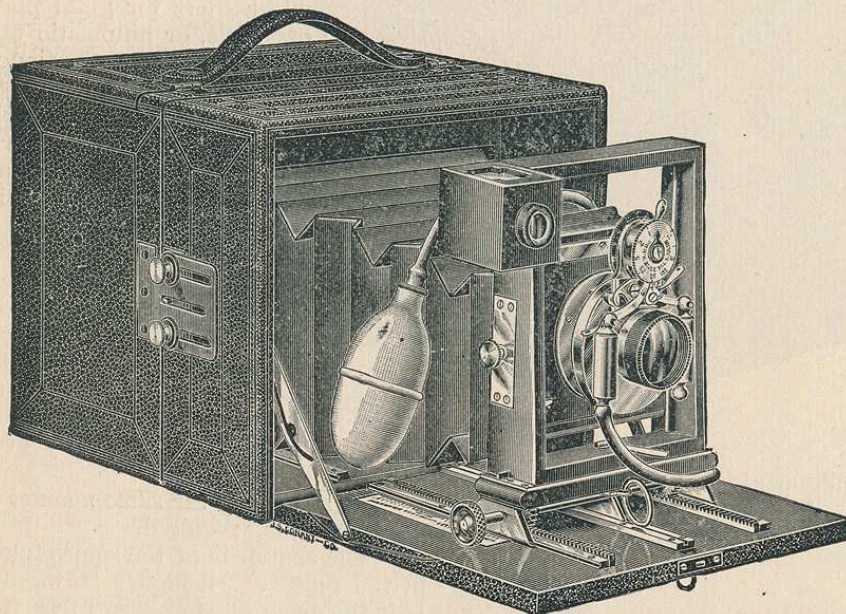
PRICE LIST.

No. 1527.	The Folding Hawk-Eye, 5×7, with three F. W. double holders for glass plates, or same for cut films .	\$40 00
	Same as above fitted with Taylor & Hobson Lens .	47 50
No. 1532.	Roll Holder with Automatic Tally .	9 00

(The 5×7 Hawk-Eye Roll Holder uses 5 inch film. For price list, see page 43.)

THE 5x7 FOLDING HAWK-EYE, No. 2.

With Taylor & Hobson or Kamaret Lens, and
Bausch & Lomb Improved Shutter.



NO. 1528.

The strength of the above combination from a photographic standpoint will be readily recognized, and the beautiful finish and fine workmanship of camera, lens, and shutter also make this a most desirable outfit for those who want the very best.

The No. 2 model has in addition to the double swing, a double sliding front, thus giving every adjustment which will ever be required.

This camera is of extra fine hand finish throughout, the wood work being ebonized and French polished, and the leather is genuine morocco.

The lenses are guaranteed to give results equal to any known make of similar dimensions, and if in any way unsatisfactory, may be returned and exchanged.

The Bausch and Lomb Iris diaphragm shutter is the latest and most popular model, and may be set for automatic exposures of from 1-100 of a second to 3 seconds with great accuracy, as well as for longer exposures in the usual manner. The lightness of this shutter, and freedom from noise and jar in quick exposures, also commend it.

PRICE LIST.

No. 1528.	The No. 2 Folding Hawk-Eye, as above with three F. W. Holders for plates or cut films,	\$60 00
" 1532.	Blair's Improved Roll Holder, with Automatic Tally	9 00
(The 5x7 Roll Holder uses 5 inch film, and the 6½x8½ uses 8½ inch film.		
For price list see page 43.)		

THE CENTURY HAWK-EYE.

6½x8½ Folding.

CENTURY, NO. 1530.

ROLL HOLDER, NO. 1533.

The Century Hawk-Eye is the first practical 6½x8½ combined hand and tripod camera, is very compact and not any heavier than a 5x7 of other manufacture. It is a very magnificent piece of photographic apparatus, no expense being spared to have everything pertaining to it the best we can make or procure.

The foregoing description and illustrations of the 5x7 Folding Hawk-Eyes will also explain the construction and operation of the Century, excepting that in the latter the opening for the holders is at the side instead of at the top.

The Century Hawk-Eye is fitted with a Double Swing, Double Rising and Falling Front, Bausch & Lomb Automatic Diaphragm Shutter, and Rapid Universal Lens; also Aluminum shutter and lens mountings, and the best morocco coverings. Price complete as above, with three F. W. Holders for glass plates or cut films, \$90 00; or with improved Roll Holder, \$100 00.

No. 3 FOLDING HAWK-EYES.

5x7, NO. 1525.

6½x8½-2, NO. 1530 A.

The Folding Hawk-Eye Cameras will be supplied in either 5x7 or 6½x8½ size without lenses or shutters for customers desiring to use other styles than those which we list. For convenience in ordering, such cameras are catalogued as No. 3.

Lenses and shutters may be fitted, adjusted and focused at our factory at slight additional expense.

Price of No. 3 Folding Hawk-Eye, 5x7	\$30 00
" " " " 6½x8½	45 00
" Blair's Imp'd Roll-Holder, with Automatic Tally, for 6½x8½	12 00

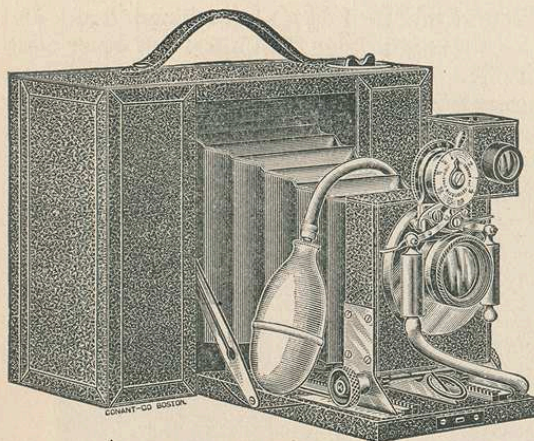
To afford opportunity for comparison of the prices of different lenses suitable for these cameras, the following list is furnished; but as we do not carry some of them in stock, a slight delay is liable to occur in obtaining the lens from the manufacturer.

In estimating complete cost, add to the price of the lens selected that of the No. 3 Hawk-Eye, and if the Bausch & Lomb Shutter is desired also add \$13 50 to \$15 50, if for 5x7; or, \$14 50 to \$15 50, if for 6½x8½.

Aluminum, \$4 00 to \$6 00.

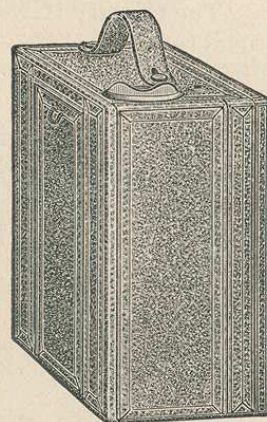
	5x7	6½x8½
Gray, Periscope	\$15 00	\$18 00
Bausch & Lomb, Velox	15 00	20 00
" " Rapid Velox	10 00	25 00
Blair, Rapid Rectilinear	20 00	30 00
Beck, " "	22 50	34 00
Darlot, " Hemispherical	25 00	30 00
Alvin G. Clark,	28 00	36 00
Gundlach, Rapid Rectigraphic	30 00	38 00
Zeiss, Anastigmat, Series II	33 00	42 00
Taylor, Taylor & Hobson, Rapid Rectilinear	35 00	50 00
Swift, Rapid Paragon	37 25	42 30
Suter,	40 00	50 00
Voigtlander, Rapid Euryscope	40 00	52 00
" Extra "	45 00	52 00
Dallmeyer, Rapid Rectilinear	45 00	57 00
" Extra "	74 00	86 00
Ross, Rapid Symmetrical	46 00	52 00
Steinheil, Series II	48 00	60 00

"THE 400" CAMERA.



UNFOLDED FOR USE.

No. 1565.



FOLDED FOR CARRYING.

Size, folded, $6\frac{1}{2} \times 3\frac{1}{2} \times 8\frac{1}{2}$ inches; Weight, 4 pounds; Capacity, 50 4×5 pictures. Fitted with Bausch & Lomb Shutter, and 8 in. R. R. Lens.

The "400" is positively the most compact 4×5 camera for roll film in existence, and the highest grade folding hand camera in the world. High priced, it may be considered, but if you care to possess the most marvellously beautiful, most wonderfully compact and most perfect working piece of photographic apparatus ever devised, you will not regret the investment.

Wood cuts and type can convey but a poor idea of the appearance of the camera. Every exposed part inside and out, when folded or unfolded is covered with the finest selected morocco leather, except the brass work which is hand finished and lacquered.

The second illustration shows the extreme convenience of the shape (which is quite like a book) when folded, and only $3\frac{1}{2}$ in. thick, but the bellows capacity is nevertheless such that a lens of longer focus than usually employed with 4×5 cameras is fitted. It is an 8 inch Rapid Rectilinear, and with large opening gives beautiful definition to the extreme edges of the field.

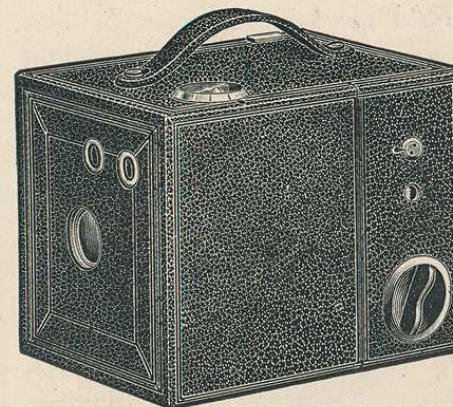
The shutter may be set for automatically timed exposures of from 1-100 of a second to 3 seconds with great accuracy, as well as for longer exposures in the usual manner.

PRICE LIST.

Price, with roll of film, for 50 exposures,	\$60 00
Attachment for plates, with one Feather-Weight Holder,	10 00

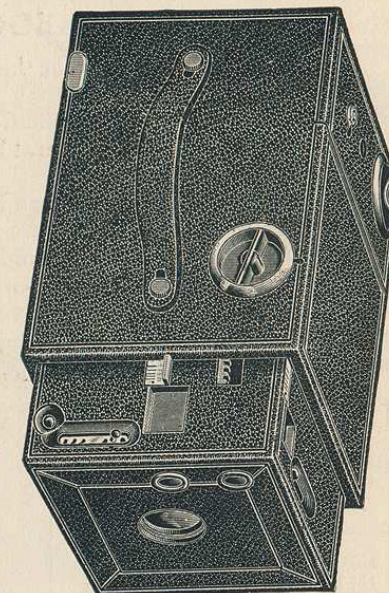
("The 400" uses $4\frac{1}{4}$ inch film. For price list see page 43.)

THE "COLUMBUS" CAMERA.



SIDE VIEW CLOSED.

No. 1553.



TOP VIEW, OPENED FOR USE.

Size, $8 \times 6\frac{1}{4} \times 5\frac{1}{2}$ inches.

Weight, $3\frac{3}{4}$ pounds.

Capacity, 100 4×5 pictures without reloading.

The "Columbus" is the result of continued experiment with a view to produce a camera of the most simple and reliable construction, arranged to make the largest number of continuous exposures, with the least weight, and least trouble to the user, at a very moderate price.

A reference to the illustrations and head lines will show its advantages. To focus, the inside box is quickly projected by turning the knob, the scales for distances being located close to the finders on side and top.

It is fitted with Blair Rapid Rectilinear lens, revolving diaphragm and adjustable speed safety shutter with time exposure stop, of the same general style as in the '91 model Hawk-Eye. The workmanship and finish are first-class, and it is leather-covered with oxidized trimmings.

The Columbus is provided with a Hawk-Eye roll holder, and is constructed to use roll film only.

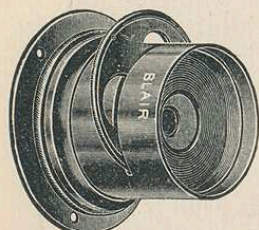
PRICE LIST.

Price complete, loaded for 50 exposures,	\$25 00
Extra Roll Holders, with shipping case,	7 50

(The "Columbus" uses 4 inch film. For price list see page 43.)

LENSES.

THE LUCIDOGRAPH LENS.



NOS. 1570-1574.

They are provided with revolving diaphragm, and the mounts are handsomely finished.

For landscape viewing, it is a well-conceded fact that there is nothing better than a Single Achromatic Lens, as the expression of perspective is natural and it gives exceedingly uniform definition.

These lenses are made from the finest quality of glass, are perfectly achromatic, and of *superior illuminating power*. They are adapted to all-around use, and will make excellent instantaneous pictures, working very quickly with medium sized aperture.

PRICES.

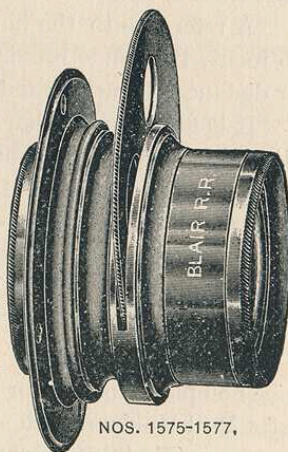
Cat. No.	Maker's No.	Size of Plate on which the lens will cut the image clearly to edge.	Diameter of Lens.	Diameter of Flange.	Back Focus.	Price.
1570	1	3½ × 4½	1½ in.	2½ in.	5 in.	\$5 00
1571	2	4½ × 5½	1½ "	2½ "	8 "	5 00
1572	3	5 × 8	1½ "	2½ "	9½ "	6 00
1573	4	6½ × 8½	1½ "	2½ "	10 "	7 00
1574	5	8 × 10	1½ "	2½ "	11 "	8 00

BLAIR RAPID RECTILINEAR LENS.

This lens is made complete in our Boston factory, the glass used being of the superior quality prepared in Jena, Germany, and universally recognized as unequalled for photographic purposes.

The success of our new department in manufacturing high grade lenses has been such that we have put in several new grinding machines and otherwise enlarged our facilities in this department.

The Blair Rapid Rectilinear Lens was designed especially for use with the Hawk-Eye Camera, but we are now prepared to supply them separately and at a price lower than that of any other lens of equal quality. We shall for the present make but three sizes, as below.



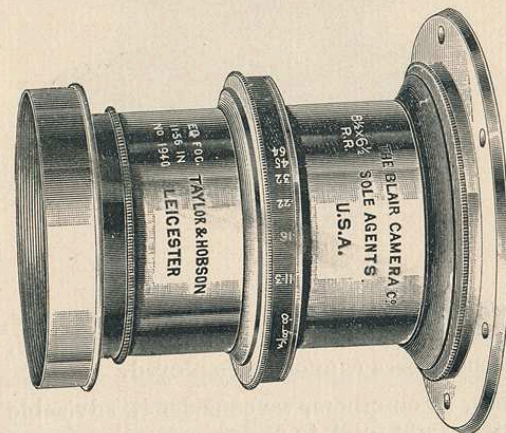
NOS. 1575-1577.

Cat. No.	No.	Size of Plate.	Diameter of Lens.	Diameter of Flange.	Back Focus.	Price.
1575	1	4 × 5	1½ in.	2½ in.	6 in.	\$12 00
1576	2	5 × 7	1½ "	2½ "	8 "	20 00
1577	3	6½ × 8½	1½ "	2½ "	9½ "	30 00

THE TAYLOR & HOBSON LENSES.

The Taylor & Hobson Lenses, since introduced by us last year, have been received with great favor and have had a large sale among skilled amateurs and expert photographic specialists. Lack of space prevents us from publishing here a full description of the many advantages which these lenses possess, and we quote only the more essential parts of our complete Taylor & Hobson lens catalogue which will be sent on application.

RAPID RECTILINEAR LENSES.



DOUBLE COMBINATION.

ANGLE OF VIEW, BETWEEN 40 AND 50 DEGREES.

These Lenses are essential for architectural subjects, for copying and enlarging, and for all work requiring absolute freedom from distortion.

With this form of Lens, it is possible to secure the greatest rapidity which has been obtained without the sacrifice of defining power due to spherical aberration. On this account it is most perfectly adapted for instantaneous views, and for GENERAL PURPOSES of landscape work and portraiture.

The first illustration above represents the R R Lens as fitted with the Iris Diaphragm. The full WORKING APERTURE of these Lenses is No. 4, f/8.

Cat. No.	Makers No.	Size of View for Landscape.	Size of View for Portrait.	Diameter of Standard Screw.	Size of Opening Required in Lens Board.	Back Focus.	Equivalent Focus.	Prices.
1610	1	3½ × 4½		1½ in.	1½ in.	4 in.	5 in.	\$25.00
1611	2	4½ × 5½	4 × 5	1½ "	1½ "	6½ "	7 "	30.00
1612	3	5 × 8	4½ × 5½	2 "	2½ "	7 "	9 "	35.00
1613	4	6½ × 8½	5 × 7	2 "	2½ "	9 "	11 "	50.00
1614	5	8 × 10	6½ × 8½	2½ "	2½ "	11 "	13 "	60.00
1615	6	10 × 12	8 × 10	3 "	3½ "	14 "	16 "	75.00
1616	7	12 × 15	10 × 12	3 "	3½ "	16 "	18 "	100.00
1617	8	16 × 18	12 × 15	4 "	4½ "	22 "	24 "	160.00
1618	9	20 × 22	16 × 18	5 "	5½ "	27½ "	30 "	200.00

WIDE ANGLE RECTILINEAR LENSES.



DOUBLE COMBINATION.

"These Lenses include between 75 and 80 degrees, and are most valuable in photographing architectural subjects, interiors, and landscapes, for which longer focus lenses cannot be employed.

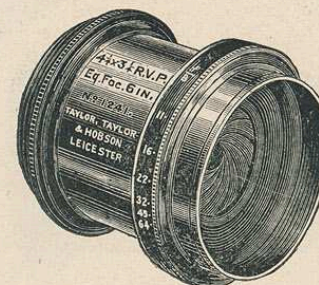
On these Lenses, as on others, we consider it advisable to fit hoods to shield them from stray light, and to afford protection from mechanical injury in the only way by which it can be done without sacrificing equality of illumination. These considerations, rightly estimated, far outweigh that of the small increase of compactness or portability which is commonly gained by sacrificing the hood.

In using these Lenses in conjunction with a camera swing-back, it is well to specially observe the circumstances noted in our remarks on levels for swing back, page 22.

The full WORKING APERTURE of the Lenses in this series is No. 16, f/16."

Cat. No.	Makers No.	Size of View for Landscape.	Size of View for Portrait.	Diameter of Standard Screw.	Size of Opening Required in Lens Board.	Back Focus.	Equivalent Focus.	Prices.
1620	1	4 × 5	3 $\frac{1}{4}$ × 4 $\frac{1}{4}$	1 $\frac{1}{2}$ in.	1 $\frac{5}{8}$ in.	2 $\frac{1}{8}$ in.	3 in.	\$25.00
1621	2	5 × 7	4 × 5	1 $\frac{1}{2}$ "	1 $\frac{5}{8}$ "	4 "	4 "	30.00
1622	3	6 $\frac{1}{4}$ × 8 $\frac{1}{2}$	5 × 7	2 "	2 $\frac{3}{8}$ "	4 $\frac{1}{8}$ "	5 "	37.00
1623	3 a	8 × 10	6 $\frac{1}{2}$ × 8 $\frac{1}{2}$	2 "	2 $\frac{1}{8}$ "	5 $\frac{1}{4}$ "	6 "	50.00
1624	4	10 × 12	8 × 10	2 "	2 $\frac{3}{8}$ "	6 $\frac{1}{4}$ "	7 "	65.00
1625	5	12 × 15	10 × 12	3 "	3 $\frac{3}{8}$ "	8 "	9 "	75.00
1626	6	16 × 18	12 × 15	4 "	4 $\frac{5}{8}$ "	11 $\frac{3}{8}$ "	13 "	100.00
1627	7	20 × 22	16 × 18	5 "	5 $\frac{1}{2}$ "	15 $\frac{1}{4}$ "	16 "	135.00

RAPID VIEW LENSES.



SINGLE COMBINATION.

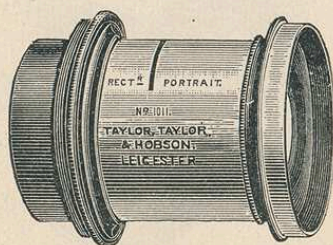
"These Lenses are of the form now universally recognized as the best for landscape work; for having few surfaces to reflect stray light, the images formed are in this respect more perfect than those formed by Double Combination Lenses.

The angle of view of Lenses in this series is about 40 degrees, and is designed to give all due effect to the size of distant objects. The Lenses are nearly rectilinear, and their field is very flat and equally illuminated.

The full working aperture of this lens is No. 8, f/11. 3."

Cat. No.	Makers No.	Size of Plate for Landscape.	Size of Plate for Portrait.	Diameter of Standard Screw.	Size of opening Required in Lens Board.	Back Focus.	Equivalent Focus.	Prices.
1630	3	5 × 8	4 × 5	2 in.	2 $\frac{3}{16}$ in.	10 in.	10 $\frac{1}{2}$ in.	\$20.00
1631	4	6 $\frac{1}{2}$ × 8 $\frac{1}{2}$	5 × 7	2 "	2 $\frac{3}{16}$ "	11 $\frac{1}{4}$ "	12 "	25.00
1632	5	8 × 10	6 $\frac{1}{2}$ × 8 $\frac{1}{2}$	2 $\frac{1}{2}$ "	2 $\frac{1}{16}$ "	14 $\frac{1}{4}$ "	15 "	30.00

RAPID PORTRAIT LENSES.



DOUBLE COMBINATION.

"These lenses are of the most approved modern type, and are rectilinear. Nos. 1 to 4 are nearly twice as rapid as the R R Lenses; the others have a full working aperture, $f/8$.

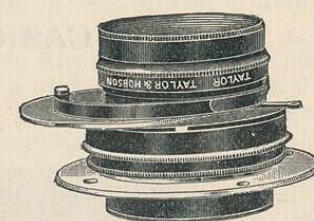
We list two sizes of C D V Lens, and two for cabinet pictures to accommodate for length of studio.

In each case the longer focus lens produces superior perspective effect, and is preferable if conditions admit of its use.

For large heads, some photographers prefer the R V Lenses."

Cat. No.	Makers No.	Size of Plate.	Approximate distance between Lens and subject for a full figure.	Diameter of Standard Screw.	Size of Opening Required in Lens Board.	Back Focus.	Equivalent Focus.	Prices
1640	1	Carte.	14 ft.	2½ in.	2½ in.	5 in.	6½ in.	\$42.00
1641	2	"	17 "	3 "	3½ "	6 "	8 "	52.00
1642	3	Cabinet.	18 "	3½ "	3½ "	9 "	12 "	72.00
1643	4	"	25 "	4 "	4½ "	13½ "	17 "	102.00
1644	5	10 × 12	For Portraits and Groups.	3 "	3½ "	15½ "	18 "	95.00
1645	6	12 × 15		4 "	4½ "	21½ "	24 "	155.00
1646	7	16 × 18		5 "	5½ "	26½ "	30 "	210.00
1647	8	20 × 24		5 "	5½ "	31½ "	36 "	270.00
1648	9	24 × 27		6 "	6½ "	43½ "	48 "	400.00

Lenses for Detective and Fixed Focus Cameras.



DOUBLE COMBINATION.

"It is necessary that a Detective Lens, beside being rapid, should be able to define in one plane both near and distant objects. In any Lens these two qualities are physically opposed, and can only be had together to any great extent, in Lenses of short focus. For this reason, fixed focus camera work is confined to small plates.

The unique design of our Detective Lenses necessitates the separate working of each of the eight surfaces.

Though the cost is thus increased, we have the greatest confidence in continuing to work upon these lines, which are indeed the only ones on which even approximate perfection is attainable.

We believe that in respect of rapidity, of perfect spherical and chromatic corrections, flatness of field, equality of illumination, and freedom from astigmatism, the Lenses of this series are the very best of their kind.

They are eminently suited for enlarging from their own negatives. Nos. 0, 1 and 2 have a full aperture $f/5.6$; No. 3 works at $f/8$.

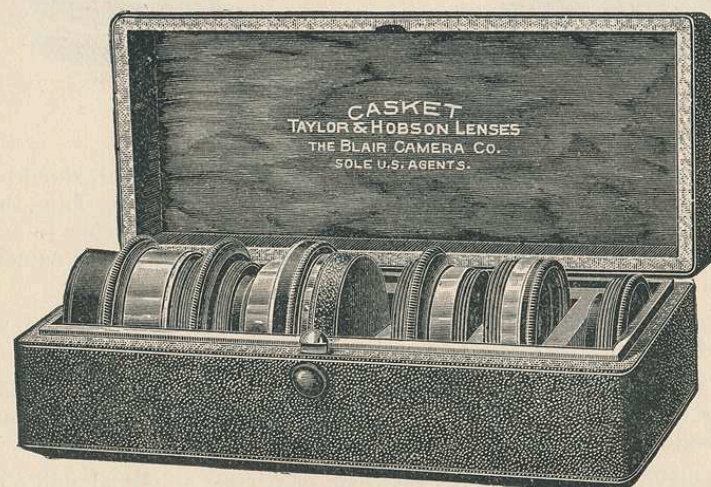
We fit these Lenses with a form of Mr. Shew's well-known Patent Shutter (illustrated), working between the combinations, having variable speed, and being light, compact, and thoroughly efficient."

Cat. No.	Makers No.	Size of Plate for Landscape.	Diameter of Standard Screw.	Size of opening Required in Lens Board.	Back Focus.	Equivalent Focus.	Prices.	Extra for Patent Shutter.
1650	0	2½ × 2½	1½ in.	1½ in.	2½ in.	3 in.	\$23.00	\$5.00
1651	1	3¼ × 3¼	1½ "	1½ "	3½ "	4 "	28.00	5.00
1652	2	3½ × 4½	1½ "	1½ "	4½ "	5 "	32.00	6.00
1653	3	3½ × 4½ or 4 × 5	1½ "	1½ "	5½ "	6 "	32.00	6.00

In mounting detective Lenses, and adjusting the camera, it is of the very utmost importance to ensure the plane of the true image coincides with the surface of the sensitive film.

Not only must the position of the lens be carefully determined in relation to its distance from the film, but also to the direction of its axis. For general purposes, it is advisable to fix the focus, if anything, a trifle longer than is necessary for the most distant objects; and as distant objects occur most frequently in the upper portion of a view a downward tilt of the lens' axis to the extent of about one degree, is usually advantageous.

CASKET LENSES.



"Comprise sets of Lenses, fitting one mount and contained in compact Morocco covered caskets, including the following lenses selected from foregoing list and adapted for a variety of work: Rapid Rectilinear; Wide Angle Rectilinear, and Rapid View Lenses.

They are proving a great boon to Tourists.

Each combination is complete and perfect in itself.

Cat. No.	Makers No.	Lenses in casket one each.	For 5 × 7 Plates.	For 6½ × 8½ Plates.
1657	3	R. R., W. A. R., R. V.	\$65.00	\$90.00
1658	3 a	R. R., W. A. R., R. V.		

Other combinations will be ordered from the makers when desired.

STANDARD SCREW ADAPTERS.

The Standard Screw Adapters mentioned in the Preface to this List are intended to carry any Lens in a flange larger than its own. Each adapter has an internal and an external screw, which are successive sizes of the Standard series. As now arranged, screws up to 3 inches diameter have 24 threads per inch, and those above, 12 threads. The diameters are measured outside the threads of the external or male screw.

Cat. No.	Makers No.	External Screw.	Internal Screw.	Prices.
1660	1	2 in.	1½ in.	\$.75
1661	2	2½ "	2 "	.75
1662	3	3 "	2½ "	1.00
1663	4	3½ "	3 "	1.25
1664	5	4 "	3½ "	1.50
1665	6	5 "	4 "	2.00
1666	7	6 "	5 "	2.50

FOCUSING MAGNIFIERS.

Catalogue No. 1670.

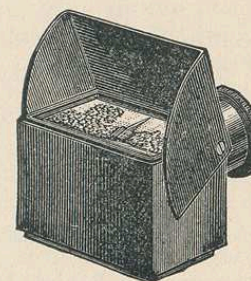
These Magnifiers are intended for use in examining the definition of an image upon the camera focusing screen.

They are of plano-convex form, giving a flat field one inch in diameter.

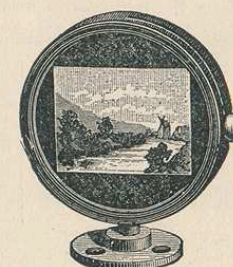
PRICE, MOUNTED WITH DRAW TUBE, AND ADJUSTMENT FOR VARIOUS SIGHTS, \$2.00

FINDERS.

THESE FINDERS INCLUDE THE SAME ANGLE OF VIEW AS MOST RAPID LENSES.



No. 3.



No. 4.

Catalogue No. 1675.

Makers No. 3, Finder forms its image on a ground glass screen, viewed from above or back as preferred, and designed for hand cameras. Price, \$2.50.

Catalogue No. 1676.

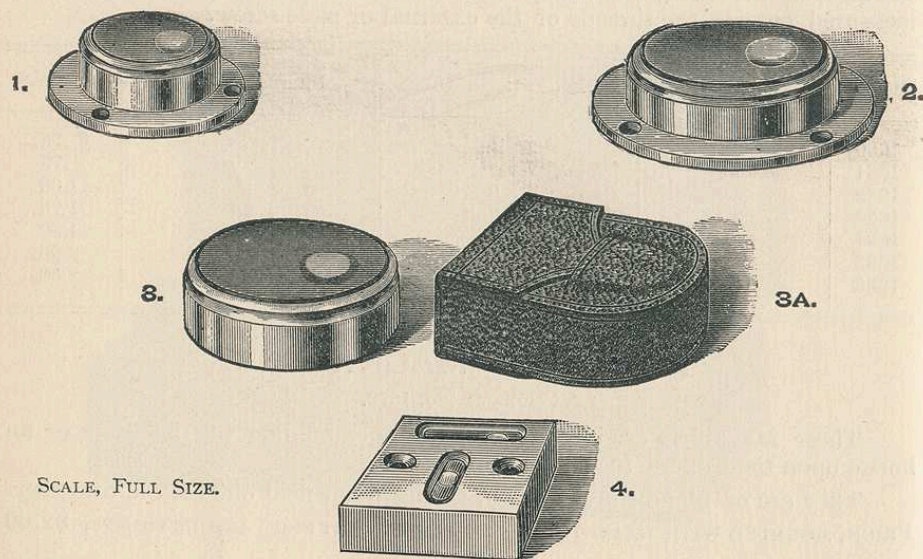
Makers No. 4, Finder shows the view distinctly in any light, without shade or covering, and practically undistorted. Price, \$2.50

Extra Attachment Fittings, 25 cents.

LEVELS FOR CAMERAS

And Other Instruments.

The leaning of what should be vertical lines is altogether avoided by using a level on the swing-back to insure that the face and sides of the frame are vertical.



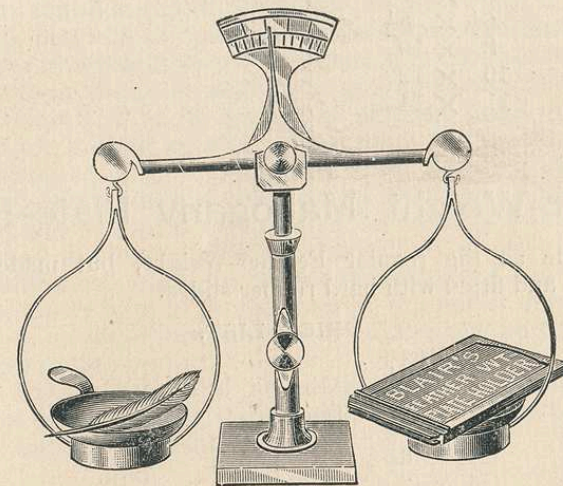
No. 3 is intended for the pocket, or to be set flush in the camera frame. The others may be screwed to the camera.
No. 1, 2 and 3 indicates correct position of both face and sides of the plate, when the bubble is central
No. 4 indicates the two positions separately.

Catalogue No.	Makers No.	Prices in Brass.
1680	1	.75
1681	2	1.00
1682	4	1.50
1683	3 flush	.75

When ordered in nickel plate, 25 cents extra. No. 3 and 4 can be furnished with Morocco cases at an extra cost of 50 cents each.

Blair's Feather-Weight Double Plate-Holder.

Patented. Feb. 9, 1875, and Sept. 2, 1884.



Absolutely light-tight. Substantial, serviceable, accurate.

The object in view in constructing this Holder was to supply one which would occupy the smallest space consistent with strength and safety, and, at the same time, at a price which would encourage a more liberal supply being used, thus avoiding the annoyance of having so frequently to renew the sensitive plates.

After a period of six years since the first introduction of this holder, we feel that the object in view has been fully sustained — the immense sale, as well as the attempts of other manufacturers to copy its design, attesting most forcibly to its great popularity. It is not only the lightest and most compact double plate-holder ever made, but it is the most perfectly light-tight, while being so readily filled and emptied.

These Holders are arranged to receive kits for plates any size under that of the holder (leaving, as a matter of course, sufficient difference in the size to make the frame of kits). Thus, with an 8 × 10 Camera, all sizes from 3¼ × 4¼ up to 8 × 10 can be used. Kits are not included with holders at prices given; therefore, in ordering, please specify when they are desired. Our method of applying the holder to the Cameras of our make admits of the former being changed end for end; therefore, when in a cramped position, and unable to draw the slide to the right, change the holder or adjuster and draw to the left. Unless otherwise ordered, holders will be fitted with black-board registering slides, in sizes under 10 × 12.



No.	Size.	PRICES.
2090	3 $\frac{1}{4}$ × 4 $\frac{1}{4}$	\$1 00
2091	4 × 5	1 00
2092	4 $\frac{1}{4}$ × 5 $\frac{1}{2}$	1 00
2093	4 $\frac{1}{4}$ × 6 $\frac{1}{2}$	1 25
2094	5 × 7	1 25
2095	5 × 8	1 35
2096	6 $\frac{1}{2}$ × 8 $\frac{1}{2}$	1 60
2097	8 × 10	1 85
2098	10 × 12	3 50
2099	11 × 14	4 00

Feather-Weight Mahogany Plate-Holders.

Same style as the regular Feather-Weight, but made of mahogany, French polish, and fitted with hard rubber slides.

No.	Size.	PRICE LIST.
2090 C,	3 $\frac{1}{4}$ × 4 $\frac{1}{4}$	\$1 45
2091 C,	4 × 5	1 50
2092 C,	4 $\frac{1}{4}$ × 5 $\frac{1}{2}$	1 50
2093 C,	4 $\frac{1}{4}$ × 6 $\frac{1}{2}$	1 90
2094 C,	5 × 7	1 90
2095 C,	5 × 8	2 00
2096 C,	6 $\frac{1}{2}$ × 8 $\frac{1}{2}$	2 40
2097 C,	8 × 10	2 90
2098 C,	10 × 12	5 00
2099 C,	11 × 14	5 50

Blair's Feather-Weight Double Film-Holder.

This holder does away entirely with Film Carriers, and measures but $\frac{7}{16}$ inch in thickness, up to and including the 8x10 size. They are made and kept in stock to fit in place of and focus with regular Feather-Weight Plate Holders. The film is easily inserted and withdrawn, the operation being simply to withdraw the dark slide and insert the film, which is kept perfectly flat in the holders. They do not however focus with holders having back springs.

No.	Size.	PRICE LIST.
2090 B,	3 $\frac{1}{4}$ × 4 $\frac{1}{4}$	\$1 00
2091 B,	4 × 5	1 00
2092 B,	4 $\frac{1}{4}$ × 5 $\frac{1}{2}$	1 00
2093 B,	4 $\frac{1}{4}$ × 6 $\frac{1}{2}$	1 25
2094 B,	5 × 7	1 25
2095 B,	5 × 8	1 35
2096 B,	6 $\frac{1}{2}$ × 8 $\frac{1}{2}$	1 60
2097 B,	8 × 10	1 85
2098 B,	10 × 12	3 50
2099 B,	11 × 14	4 02

BLAIR'S FEATHER-WEIGHT HOLDERS.

WITH BACK SPRINGS.

We now make these holders, when desired, with springs to press the plate outward; but holders having such springs are, of necessity, about one-quarter thicker than those without springs. They are likewise provided with a safety-ledge at the slide end of the holder, so that when the slide is withdrawn, the ledge prevents the pressure of the spring from throwing the plate out. As they are of different focus, they cannot be used in the same adjuster with the regular form without changing the ground-glass frame.

We have adapted it to be applied to different make of Cameras, and now have in stock, holders of this pattern fitted to any standard Cameras. Makers of Cameras have been so careless about adopting system in fitting holders to their Cameras which would admit of their being duplicated safely, that it would be wise to send a holder which fits properly the Camera on which it is desired to use the Feather-Weight Holder. It must be borne in mind, that unless an adjuster is made, the outside dimensions of the Feather-Weight Holder will necessarily have to be the same as the holder formerly used with the Camera; and, unless otherwise ordered, holders will be fitted with black-board registering slides.

Adjusters fitted with special ground-glass frame to focus with these holders, are now in stock at our warerooms. These holders can be used with kits. Mention *with springs* when ordering.

No.	Size.	PRICES.
2090, A,	3 $\frac{1}{4}$ × 4 $\frac{1}{4}$	\$1 10
2091, A,	4 × 5	1 10
2092, A,	4 $\frac{1}{4}$ × 5 $\frac{1}{2}$	1 10
2093, A,	4 $\frac{1}{4}$ × 6 $\frac{1}{2}$	1 40
2094, A,	5 × 7	1 40
2095, A,	5 × 8	1 50
2096, A,	6 $\frac{1}{2}$ × 8 $\frac{1}{2}$	1 80
2097, A,	8 × 10	2 25
2098, A,	10 × 12	3 50
2099, A,	11 × 14	4 00

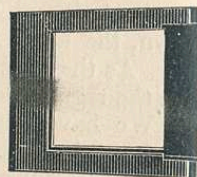
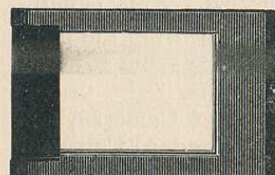
In ordering holders for use in Hawk-Eye Cameras, specify that it is desired to use the holders in those cameras.

This also applies to holder for use in plate attachment of Kamaret.

INSIDE KITS.

To enable the operator who has a large camera to use a plate smaller than the size of holders. They are made of thoroughly seasoned stock and very light.

Four styles are made: one for use with the Feather-Weight Holder with springs, one with regular Feather Weight, one with Blair Patent, and one with English Holders. *Please state plainly for which holder they are desired.*



Certain sizes of the pattern for Feather-Weight Holders and English Holders will fit one inside the other. For example, if

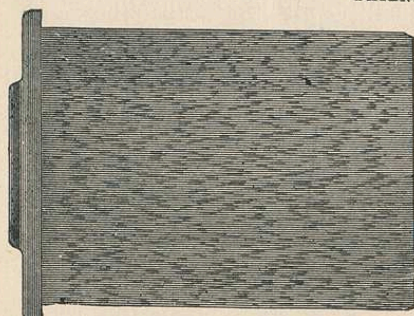
it is desired to use a 4×5 in an 8×10 holder, we would use an 8×10 kit, having a 5×8 opening, together with a 5×8 kit, having a 4×5 opening.

PRICE LIST.—KITS FOR BLAIR'S FEATHER-WEIGHT PLATE-HOLDERS.

Size of Plate-Holder.	Size of Opening in Kit.	Price.
4×5	$3\frac{1}{4} \times 4\frac{1}{4}$, $3\frac{1}{4} \times 4$	\$0 25
$4\frac{1}{4} \times 5\frac{1}{2}$	$3\frac{1}{4} \times 4\frac{1}{4}$, $3\frac{1}{4} \times 4$	0 25
$4\frac{1}{4} \times 6\frac{1}{2}$	$3\frac{1}{4} \times 4\frac{1}{4}$	0 30
5×7	$3\frac{1}{4} \times 4\frac{1}{4}$, 4×5 , $4\frac{1}{4} \times 5\frac{1}{2}$	0 30
5×8	$3\frac{1}{4} \times 4\frac{1}{4}$, 4×5 , $4\frac{1}{4} \times 5\frac{1}{2}$, $4\frac{1}{4} \times 6\frac{1}{2}$	0 30
$6\frac{1}{2} \times 8\frac{1}{2}$	$4\frac{1}{4} \times 5\frac{1}{2}$, $4\frac{1}{4} \times 6\frac{1}{2}$, 5×7 , 5×8	0 40
8×10	5×7 , 5×8 , $6\frac{1}{2} \times 8\frac{1}{2}$	0 45
10×12	$6\frac{1}{2} \times 8\frac{1}{2}$, 8×10	0 75
11×14	8×10 , 10×12	0 90
14×17	8×10 , 10×12 , 11×14	1 25

BLACKBOARD REGISTERING SLIDES.

PATENTED MAY 15, 1883.



SLIDE BEFORE REVERSED.



SLIDE SHOWING MEMORANDUM.

We feel that we need not elaborate on the desirability of a slide of this material.

"Before taking a picture the mottled surface of these slides is seen; afterward they are turned so that the black-board surface which was toward the sensitive plate is out, and the data respecting the exposure is pencilled thereon; a very convenient place, by the way, to consult it when uncapping the plate."

PRICE LIST OF SLIDES FOR HOLDERS.

Slides, $3\frac{1}{4} \times 4\frac{1}{4}$ to 5×8 , with end-piece attached	\$0 10
" 8×10	15
" 11×14	25

In ordering specify size and style of Holder; if of special size add 50% to list price.

It is always wise to have a few extra slides in your outfit.

All of Blair's Holders are fitted with these Black-board Registering Slides, and in sizes above 8×10 with Hard Rubber Slides.

POLISHED HARD RUBBER SLIDES.

The most durable slide known; totally impervious to water and chemicals. Prices complete with end-pieces attached.

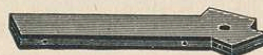
Slides $3\frac{1}{4} \times 4\frac{1}{4}$	\$0 20
" 4×5	22
" $4\frac{1}{4} \times 5\frac{1}{2}$	22
" $4\frac{1}{4} \times 6\frac{1}{2}$	28
" 5×7	28
" 5×8	28
" $6\frac{1}{2} \times 8\frac{1}{2}$	35
" 8×10	45
" 10×12	50
" 11×14	55

TRIPODS.

BLAIR'S PATENT TRIPOD TOP.

The utility of this article will be readily seen, which is to give additional rigidity to the bed of the camera. The joint in the folding bed to all cameras renders it more liable to be unsteady. With reversing cameras it is invaluable, as it forms a support for the portion of the camera which moves out in focussing. Made to receive our Feather Weight and Compact Tripods. Covered with cloth on top.

Patented June 14, 1887.



No. 3004.

PRICE, \$1.00.

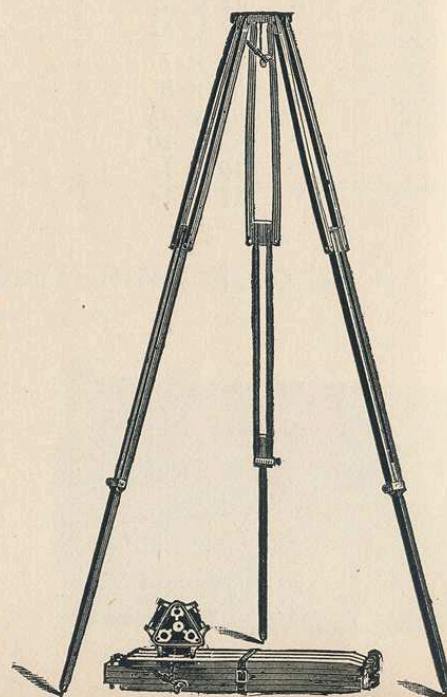
When Tripods are ordered fitted with these Patent Heads, fifty cents additional is added to the price of the tripod.

THE COMPACT ADJUSTABLE TRIPOD.

The great popularity of this Tripod speaks volumes for the merits of its design.

Its construction is similar to the well known Combination, being really the smaller sizes of this form. It is made in more compact form, and combines the rigidity of the folding with the convenience of the sliding tripod, folding shorter than the ordinary style.

Its merits are so readily seen by referring to cut, that we forego a lengthy description. It is made of best material, with cloth-covered top.



Nos. 3000A-3002A, OPEN AND FOLDED.

Cat. No. 3000A.	Size No. 00	\$3 50
" 3001A.	" 0	4 00
" 3002A.	" 1	4 50

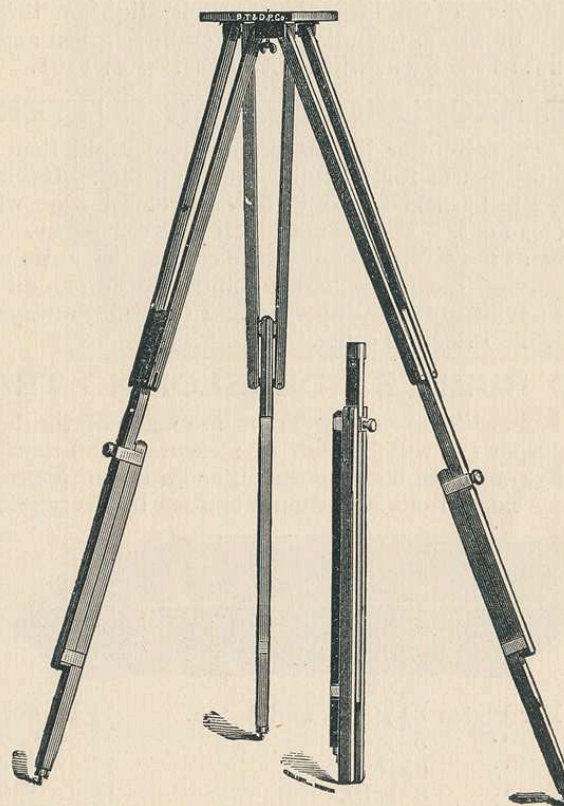
THE SPECIAL COMPACT TRIPOD.

The Special Compact is designed for those who desire to possess a tripod of the very highest grade in point of finish as well as of utility. Made of the best polished maple, the effect is extremely handsome, and the safety braces between the arms of the upper section make it impossible for the tripod to become accidentally detached.

Cat. No. 3000 B.	Size 00	\$6 00
" 3001 B.	" 0	6 00

THE BLAIR COMBINATION TRIPOD.

Possessing all the qualities of the Compact Tripod, except that, owing to the size, it is not constructed in a form that will admit of being folded so compactly.

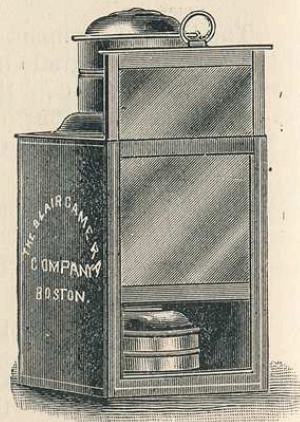


No. 3001-3002. BLAIR COMBINATION TRIPOD AND ADDITIONAL LEG FOLDED.

Cat. No. 3001	Size No. 2, intended for 11 x 14 Camera	\$6 00
" 3002	" 3, " larger Cameras.	7 50

THE TRIUMPH RUBY LANTERN.

This Lantern, though previously considered the best-made lantern sold, has been greatly improved both in appearance and utility, and is now as near perfect as can be made. The glass is encased in a neatly made metal frame, which is easily removed; in front of the ruby glass is space for a glass of another color, or orange paper. We warrant this lantern to be all we claim for it, viz., practical, white-light proof, free from unpleasant fumes, and perfectly cool at the base while burning. It is particularly adapted for photo-micrography, or the making of transparencies and lantern slides, as the ruby glass is easily withdrawn, and a powerful reflector at the back strengthens the power of the light many times. The flame is regulated from outside. No. 3100. Price, \$2.50.



NO. 3100.

We also supply an extra large lantern with light on three sides, and several extra sheets of glass, including ruby, orange, green and opal, which are held in a pocket at the back, when not in use. No. 3101. Price, \$6.00.

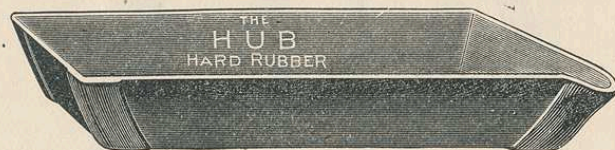
THE EXCELSIOR PAPER CUTTER.

The Excelsior paper-cutter is better and more rapid than a knife, and superior to anything in use for trimming photo. prints. Having a circular revolving blade, extra hardened, and with sharp chisel edge which will not turn, it makes a clean cut. It does not pinch off the paper. The bevelled cutting edge being at the side, and not in the centre, the knife may easily be sharpened by removing the screw and rubbing it flat on an oil-stone, which gives it a decided advantage over any other. In cutting, always use a glass surface. No. 3028. Price, 50 cents.

"HARD RUBBER" DEVELOPING TRAYS.

The "Hard Rubber" Developing Trays are made of the best quality of hard rubber, are deeper (as will be seen by measurements) than the ordinary shallow rubber tray, and with bound corners, and a lip for pouring.

They are a superior article, and should be seen by every photographer.



Size,	For Plates	3 1/4 x 4 1/4, and 4 x 5.	1 1/2 in. deep,	\$0 50
" 4 1/4 x 5 1/2.	"	5 x 8.	1 3/4 "	75
" 5 1/2 x 8 1/2.	"	6 1/2 x 8 1/2	1 3/4 "	88
" 7 x 9.	"	8 x 10.	1 7/8 "	1 15
" 8 1/2 x 10 1/2.	"	10 x 12.	2 "	1 75
" 11 x 13.	"	11 x 14.	2 1/8 "	2 40
" 12 x 15.	"	14 x 17.	2 1/8 "	4 00
" 15 x 18.	"	18 x 22.	2 1/4 "	5 75
" 19 x 23.	"	20 x 24.	2 1/4 "	7 50
" 21 x 25.	"			

These prices are subject to change without notice.

BLACK JAPANNED DEVELOPING TRAYS.

Made of selected metal for Dry-Plate photography.

PRICE LIST.

Size,	For plates	3 1/4 x 4 1/4, 4 x 5, and 4 1/4 x 5 1/2, each	\$0 20
" 4 1/4 x 5 1/2.	"	4 1/4 x 6 1/2, 5 x 7, " 5 x 8, "	25
" 5 1/2 x 8 1/2.	"	6 1/2 x 8 1/2,	30
" 7 x 9.	"	8 x 10,	35
" 8 1/2 x 10 1/2.	"	10 x 12,	40
" 11 x 13.	"		

HUB BRAND "INDENTED RUBBER TRAYS."

Patented, May 24, 1877.



EASILY KEPT CLEAN.

These trays are so constructed as to allow the plate to lie flat on the bottom, yet have all the advantages of the old developer-wasteing form with ridges.

The indentations permit the finger to be inserted freely under the plate without any danger of scratching.

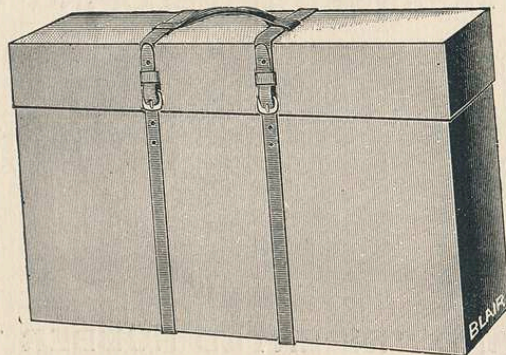
They are made to waste the least amount of developer possible, and are acknowledged to be the best tray in the market.

PRICE LIST.

Size,	For plates	3 1/4 x 4 1/4, 4 x 5, and 4 1/4 x 5 1/2	3/4 in. deep,	\$0 28
" 4 1/4 x 5 1/2.	"	4 1/4 x 6 1/2, 5 x 7, " 5 x 8	3/4 "	0 56
" 5 1/2 x 8 1/2.	"	6 1/2 x 8 1/2,	1 "	0 72
" 7 x 9.	"	8 x 10 1/2,	1 1/8 "	1 08
" 8 1/2 x 10 1/2.	"	10 x 12,	1 1/4 "	1 56
" 11 x 13.	"			

These prices are subject to change without notice. Look for the stamp "Hub Brand" on the bottom.

CARRYING CASES.



PRICE LIST.

No. 1530 C.	For $6\frac{1}{2} \times 8\frac{1}{2}$	Folding Hawk-Eye (Leather)			\$4 00
" 1527 C.	" 5×7	" " " " No. 1.			3 00
" 1528 C.	" " "	" " " " 2.			3 00
" 1529 C.	" " "	" " " " 3.			3 00
" 1536 C.	" " "	Kamaret			3 00
" 1535 C.	" 4×5	" " " " "			2 50
" 1538 C.	" 5×7	" Attachment and six Holders			3 50
" 1537 C.	" 4×5	" " " " "			2 50
" 1526 C.	" " "	Hawk-Eye			2 50
" 1720 C.	" Columbus	" " " " "			2 50
" 1727 C.	" The Four Hundred	" " " " "			2 50
" 1534 C.	" Petite	" " " " "			

Other sizes made to order, and prices given on application.

CARRYING CASES.

No. 1500 C.	For 4×5	Reversible Back Cameras			\$2 25
" 1506 C.	" 5×7	" " " " "			2 50
" 1507 C.	" $6\frac{1}{2} \times 8\frac{1}{2}$	" " " " "			2 75
" 1508 C.	" 8×10	" " " " "			3 25
" 1407 A.C.	" 4×5	English Compact Cameras			2 75
" 1406 C.	" 5×7	" " " " "			3 00
" 1408 C.	" $6\frac{1}{2} \times 8\frac{1}{2}$	" " " " "			3 50
" 1409 C.	" 8×10	" " " " "			4 00
" 1410 C.	" 10×12	" " " " "			4 50
" 1541 C.	" $6\frac{1}{2} \times 8\frac{1}{2}$	Extension			2 25
" 1542 C.	" 8×10	" " " " "			2 50
" 1546 C.	" 10×12	" " " " "			2 75
" 1548 C.	" 11×14	" " " " "			3 25
" 1524 C.	" 4×5	Hawk-Eye, Stiff			2 25
" 1524 C.S.	" " "	" " " " Soft			2 25

No. 3000 A.C.	Size 00	Compact Tripod			1 50
" 3001 A.C.	" 0	" " " " "			1 50

Special sizes and shapes made to order and prices given upon application.

BELLOWS.

PRICE LIST OF CONE LEATHER BELLOWS FOR REVERSIBLE BACK CAMERAS.

Size of Camera.		Front Frame	Rear Frame	Length.	Price.
No. 1500 B.	4×5	$3\frac{1}{2}$	$5\frac{5}{8}$	$11\frac{1}{4}$	\$3 40
" 1502 B.	5×7	$4\frac{3}{4}$	$7\frac{3}{4}$	$16\frac{1}{4}$	4 50
" 1503 B.	5×8	$6\frac{1}{4}$	9	$18\frac{1}{8}$	5 00
" 1504 B.	$6\frac{1}{2} \times 8\frac{1}{2}$	$6\frac{1}{4}$	9	$18\frac{1}{8}$	5 00
" 1505 B.	8×10	$8 \times 6\frac{3}{8}$	$10\frac{1}{8}$	$20\frac{3}{8}$	5 50

PRICE LIST OF STRAIGHT BELLOWS.

Size of Camera.		Front Frame.	Length.	Price.
No. 5000 B.	4×5	$5\frac{5}{8} \times 5\frac{1}{4}$	$9\frac{3}{8}$	\$2 25
" 5001 B.	5×7	$7\frac{13}{16} \times 6\frac{1}{8}$	$11\frac{1}{4}$	3 40
" 5002 B.	5×8	$8\frac{13}{16} \times 6\frac{3}{16}$	12	3 40

These are for our regular size of best leather bellows. Special sizes to order, and estimates furnished.

Rubber Bellows made only to order, at $33\frac{1}{3}\%$ off above list.

Directions for Ordering Special Bellows.

Cone Bellows:—Give outside dimensions of front and rear frames, length of bellows when extended.

Straight Bellows:—Give outside dimension of frames, length of bellows when extended, and depth of fold.

The price of first Special Bellows is always made to cover the cost of making pattern. The cost of those for Cone Bellows is \$7.00. Straight Bellows from \$2.00 to \$5.00.

PRICE LISTS OF SPECIAL PARTS OF CAMERAS.

In ordering special parts it is always a safe and simple plan, when the shape will admit, to lay the part of which a duplicate is desired on a paper, and outline the size, etc. In fact, this applies with equal effect in ordering Plate-Holders, etc.

REVERSIBLE ADJUSTERS.

No. 1514.	For $4\frac{1}{4} \times 5\frac{1}{2}$	Camera, Reversible Back	.	.	.	\$5 00
" 1515.	" 5×7	" " "	.	.	.	5 00
" 1516.	" $6\frac{1}{2} \times 8\frac{1}{2}$	" " "	.	.	.	6 00
" 1517.	" 8×10	" " "	.	.	.	7 00

Special sizes 10% to 20% extra.

IMPROVED REVERSIBLE BACK CAMERA LENS BOARD.

No. 1501-5.	Lens (or Front) Boards for $4\frac{1}{4} \times 5\frac{1}{2}$.	.	.	\$0 35
" 1502-5.	" " " 5×7	.	.	.	45
" 1504-5.	" " " $6\frac{1}{2} \times 8\frac{1}{2}$.	.	.	50
" 1505-5.	" " " 8×10	.	.	.	55

Lens Boards for Improved R. B., Champion, and Cincinnati Cameras are interchangeable. A 4×5 lens board for any of above Cameras will fit a 5×7 Compact; also a 5×7 lens board of the former will fit a $6\frac{1}{2} \times 8\frac{1}{2}$ Compact, and a $6\frac{1}{2} \times 8\frac{1}{2}$ will fit an 8×10 Compact Camera.

COMPACT CAMERA LENS BOARDS.

No. 1406-5.	Lens (or Front) Boards 5×7	.	.	.	\$0 35
" 1407-5.	" " " 5×8	.	.	.	
" 1408-5.	" " " $6\frac{1}{2} \times 8\frac{1}{2}$.	.	.	45
" 1409-5.	" " " 8×10	.	.	.	50
" 1410-5.	" " " 10×12	.	.	.	55

5×7 and $6\frac{1}{2} \times 8\frac{1}{2}$ Hawk-Eye same as Compact.

RECESS OR EXTENSION FRONTS.

These are used as a means in decreasing the distance between the ground glass and the front of a Camera for an exceedingly short-focus lens, and can be reversed to increase the focussing capacity in using one of a very long focus or when copying.

PRICE LIST

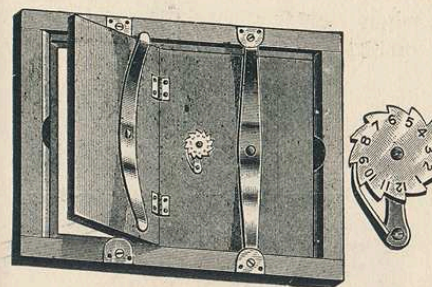
FOR REVERSIBLE BACK CAMERAS.

No.	Size of Camera.	Price.
3046	$4\frac{1}{4} \times 5\frac{1}{2}$	\$1 50
3047	5×7	
3048	$6\frac{1}{2} \times 8\frac{1}{2}$	2 00
3049	8×10	
3050	11×14	

The longest extension front made for this style of Camera, except to order, is 5 inches, and the shortest $3\frac{1}{2}$ inches; the latter will reverse into and allow the Camera to close.

IMPROVED PRINTING FRAMES.

PATENTED.



This indispensable article has been greatly improved within the past few months and is confidently recommended as the best printing frame in the market in finish, in design and in utility.

They are all fitted with our spring registering tally, which is acknowledged without equal.

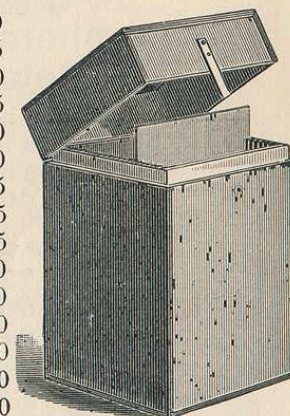
Cat. No.	Size.	Flat.	Deep.	Cat. No.	Size.	Flat.	Deep.
3010.	$3\frac{1}{4} \times 4\frac{1}{4}$	\$ 36	3019.	11×14	\$1 80	\$2 40
3011.	4×5	38	3010 A.	14×17	2 40	3 00
3012.	$4\frac{1}{4} \times 5\frac{1}{2}$	40	3011 A.	16×20	3 00	4 20
3013.	$4\frac{1}{4} \times 6\frac{1}{2}$	42	3012 A.	17×20	3 00	4 50
3014.	5×7	50	3013 A.	18×22	4 00	5 00
3015.	5×8	52	3014 A.	20×24	5 00	5 25
3016.	$6\frac{1}{2} \times 8\frac{1}{2}$	60	\$1 20	3015 A.	24×30	8 80
3017.	8×10	75	1 40	3016 A.	35×45	15 00
3018.	10×12	1 00	1 60	3017 A.	30×60	20 00

When backs opening lengthways are required, add 10% additional to price list.

Spring Registering Tallies will be supplied separately at 10 cents each, complete with spring and screws.

NEGATIVE BOXES.

Cat. No. 2048.	Holding 24 1-9 plates	\$0 50
" 2049.	" 24 1-6 "	55
" 2050.	" 24 $3\frac{1}{4} \times 4\frac{1}{4}$ plates,	60
" 2051.	" 24 4×5 "	65
" 2052.	" 24 $4\frac{1}{4} \times 6\frac{1}{2}$ "	70
" 2053.	" 24 4×8 "	80
" 2054.	" 24 5×7 "	85
" 2055.	" 24 5×8 "	85
" 2056.	" 24 $6\frac{1}{2} \times 8\frac{1}{2}$ "	95
" 2057.	" 24 8×10 "	1 00
" 2058.	" 24 10×12 "	2 00
" 2059.	" 12 11×14 "	3 00
" 2060.	" 12 14×17 "	3 50
" 2061.	" 12 17×20 "	4 50
" 2062.	" 12 20×24 "	5 50



Above, blacked inside and fitted with lock and key, \$1 00 extra. Special sizes to hold any number of plates required, made to order.

LANTERN SLIDE BOXES.

Cat. No. 2065.	Holding 25 slides	\$0 65
" 2062.	" 50 "	1 30

If made of Mahogany, add 50% to above prices.

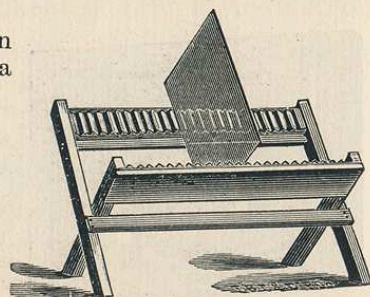
NEGATIVE DRYING RACKS.

For holding 24 plates while drying; when not in use it can be folded and hung on a nail.

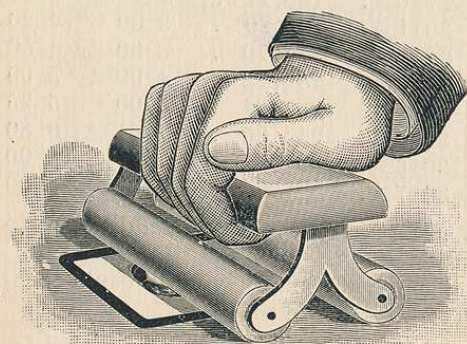
Cat. No. 2045. Price 40c. each.

Same as above, but larger size.

Cat. No. 2046. Price 50c. each.



THE SUCCESS PRINT MOUNTER.



The accompanying illustration so fully describes it that but little need be said of its merits further than the fact that every photographer should have one.

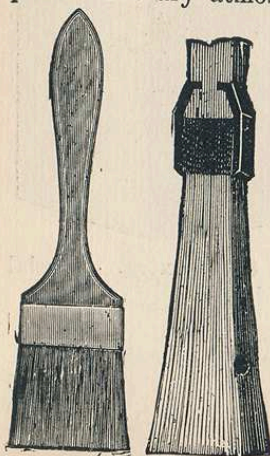
Cat. No. 3182. 6-inch . \$1 00
 " 3183. 12 " . 1 50

Photographers' Brushes, Bound and Set in Metal and Hard Rubber.

These brushes are practically indestructible so far as being affected in any way by the solution in which they may be used. They will not drop to pieces in a dry atmosphere, and are not attacked by rust rot when kept in damp places.

Their Construction involves a new principle. No metal whatever of a corrosive nature is used. The bristles are firmly held together by being first dipped in a composition of soft rubber; the handle is then placed close up to the butt of bristles (not wedged in, as is usual), and around the whole is wound a strip of rubber and metal wire combined, covering the butt of the bristles and filling a groove running around the bristle end of handle. (See sectional illustration.)

The portion of the brush covered with rubber is then vulcanized or hardened, the result being a solid rubber head, in which the handle and bristles are so firmly held that it is impossible for them to become loose or separated. It is self-evident that this method of constructing brushes is far superior to the old modes.



PRICE LIST.

No.	Width,	Each.	No.	Width.	Each.
3102.	1 inch, Camel's Hair	\$0 38	3107.	1 inch, Bristle Paste	\$0 20
3103.	1½ " " "	57	3108.	1½ " " "	25
3104.	2 " " "	75	3109.	2 " " "	35
3105.	2½ " " "	95	3110.	2½ " " "	45
3106.	3 " " "	1 40	3111.	3 " " "	50

"Hub" Anti-Cockling Mounting Solution.



For mounting Photographic Prints without curling when dry. Prints mounted with this Solution will remain perfectly flat when dry, will not cockle, bend, or twist, and do not require burnishing.

Cat. No. 3112. Price, half pint, \$0 50
 " 3113. " pint, 85
 " 3114. " quart 1 50

The "Hub" Concentrated Universal Developer. IN TWO SOLUTIONS.

Cat. Nos. 3120-3121. 8 oz. in each bottle. Adapted for any make of Dry Plates. The most economical developer in use. Price, 60 cents.

"Hub" Concentrated Hydrochinone Developer. IN ONE AND TWO SOLUTIONS.

For Transparencies and Photo-Engravers' Negative. Giving clear and transparent lines and shadows, and with strong high lights.

Cat. No. 3122. Price, one solution, 8 oz. bottles, 30 cents. Cat. No. 3123. 16 oz. bottles, 60 cents. Two solutions, put up in two 8 oz. bottles, 60 cents.

The "Hub" Concentrated Eikonogen Developer.

ONE AND TWO SOLUTION.

Adapted for any make of Dry Plates. Cat. No. 3124. 8 oz. bottles, 30 cents. Cat. No. 3125. 16 oz. bottles, 60 cents. Cat. No. 3126. Two solutions, put up in two 8 oz. bottles, 60 cents.

"Hub Brand" Concentrated Toning Solution.

By which the manipulator can obtain any color from a sepia to an intense black and white, if so desired.

The bath can be used indefinitely by simply adding $\frac{1}{2}$ ounce more of stock before using. Try it, you will use no other.

Cat. No. 3128. $\frac{1}{2}$ pint, 50 cents. Cat. No. 3129. pint, \$1.00.

The "Hub" Magnesium Flash Powder.

For making instantaneous photographs at night, or in dark interiors.

Package contains sufficient for twenty exposures, each in separate box, with directions for use.

Cat. No. 3135. Price, per box, 50 cents.

" 3136. Pure magnesium, 50 cents per ounce.

ALLEN & ROWELL DRY PLATES.

In place of the "Hub Brand" Dry Plates formerly listed in our catalogue, we now offer plates made by The Allen & Rowell Company, and recommend them for use in our Cameras. The prominent quality of these plates is their *richness of emulsion*, which affords great latitude in exposure and development, and produces the most beautiful negatives.

Allen & Rowell Plates are made in two degrees of sensitiveness; the No. 40 Plates being extremely rapid, and the No. 20 of a slower emulsion, designed for landscapes and time pictures.

GLASS DRY PLATES.

CELLULOID NEGATIVE FILMS.

Size.	Per Doz.	Size.	Per Doz.
$3\frac{1}{4} \times 4\frac{1}{4}$	\$0 45	$3\frac{1}{4} \times 4\frac{1}{4}$	\$0 55
4×5	65	4×5	80
$4\frac{1}{4} \times 5\frac{1}{2}$	75	$4\frac{1}{4} \times 5\frac{1}{2}$	90
$4\frac{1}{4} \times 6\frac{1}{2}$	90	$4\frac{1}{4} \times 6\frac{1}{2}$	1 10
$4\frac{3}{4} \times 6\frac{1}{2}$	95	$4\frac{3}{4} \times 6\frac{1}{2}$	1 20
5×7	1 10	5×7	1 40
5×8	1 25	5×8	1 55
$6\frac{1}{2} \times 8\frac{1}{2}$	1 65	$6\frac{1}{2} \times 8\frac{1}{2}$	2 10
7×9	1 90	8×10	3 00
7×10	2 10	10×12	4 75
8×10	2 40	11×14	6 25
10×12	3 80		
11×14	5 00		
14×17	9 00		
16×20	12 50		
17×20	13 00		
18×22	15 50		
20×24	18 50		

Lantern Slide Plates on specially selected glass, per doz, 65 cents,

BLAIR'S FILM.

Blair's Film is wound in such a manner that the rolls will fit any roll holder camera, excepting one or two very cheap patterns, and may be rewound on old spools for the latter.

There are no joints or seams of any length.

Blair's Film has a delicate, grain surface, resembling fine ground-glass, on the coated side, and can be allowed to remain for an indefinite period in the developer, the fixing bath or the soaking solution and never frill in the least. Thus, the development of an under-exposed film need never be checked until it is satisfactory in point of detail and density.

The ground-glass surface but slightly affects the transparency of the film and greatly enhances the printing qualities. The emulsion is extremely rapid.

PRICE LIST.

CAT. NO.	WIDTH.	LENGTH.	EQUAL TO FOLLOWING EXPOSURES.	PRICE.
3150.	$3\frac{1}{4}$ in.	108 in.	25 $3\frac{1}{4} \times 4\frac{1}{4}$	\$1 20
3151.	$3\frac{1}{4}$ "	215 "	50 $3\frac{1}{4} \times 4\frac{1}{4}$	2 40
3152.	$3\frac{3}{4}$ "	90 "	25 $3\frac{3}{4} \times 3\frac{3}{4}$	1 10
3153.	$3\frac{3}{4}$ "	180 "	50 $3\frac{3}{4} \times 3\frac{3}{4}$	2 20
3154.	4 "	130 "	25 4×5	1 65
3155.	4 "	255 "	50 4×5	3 30
3156.	4 "	380 "	75 4×5	5 00
3157.	4 "	505 "	100 4×5	6 60
3158.	$4\frac{1}{4}$ "	135 "	{ 40 $4\frac{1}{4} \times 3\frac{1}{4}$ or 25 $4\frac{1}{4} \times 5$ or 22 $4\frac{1}{4} \times 5\frac{1}{2}$ or 20 $4\frac{1}{4} \times 6\frac{1}{2}$	1 65
3159.	$4\frac{1}{4}$ "	265 "	{ 80 $4\frac{1}{4} \times 3\frac{1}{4}$ or 50 $4\frac{1}{4} \times 5$ or 48 $4\frac{1}{4} \times 5\frac{1}{2}$ or 40 $4\frac{1}{4} \times 6\frac{1}{2}$	3 30
5160.	$4\frac{1}{4}$ "	505 "	100 $4\frac{1}{4} \times 5$	6 60
5161.	5 "	180 "	44 5×4 or 25 5×7 or 22 5×8	3 00
3162.	5 "	355 "	88 5×4 or 50 5×7 or 44 5×8	6 00
3163.	$5\frac{1}{4}$ "	105 "	25 $5\frac{1}{4} \times 4$	1 65
3164.	$5\frac{1}{4}$ "	180 "	25 $5\frac{1}{4} \times 7$ or 43 $5\frac{1}{4} \times 4$	3 00
3165.	$5\frac{1}{4}$ "	205 "	50 $5\frac{1}{4} \times 4$	3 30
3166.	$5\frac{1}{4}$ "	355 "	50 $5\frac{1}{4} \times 7$	6 00
3167.	$6\frac{1}{2}$ "	218 "	25 $6\frac{1}{2} \times 8\frac{1}{2}$	4 40
3168.	$6\frac{1}{2}$ "	435 "	50 $6\frac{1}{2} \times 8\frac{1}{2}$	8 80
3169.	8 "	255 "	25 8×10	6 60
3170.	8 "	505 "	50 8×10	13 00
3171.	$8\frac{1}{2}$ "	167 "	25 $8\frac{1}{2} \times 6\frac{1}{2}$	4 40
3172.	$8\frac{1}{2}$ "	330 "	50 $8\frac{1}{2} \times 6\frac{1}{2}$	8 80

OUTFITS FOR DEVELOPING AND PRINTING.

To save trouble in selecting the articles needed for Developing and Printing, we have prepared outfits containing only those necessary for the processes, and supply them at prices considerably below the cost of the same items if bought separately. We guarantee everything of best quality.

Cat. No.	Size.	Price of Developing Outfit.	Price of Printing Outfit.
3190.	For 4 × 5	\$3 00	\$3 50
3191.	" 5 × 7	5 50	4 55
3192.	" 6½ × 8½	5 75	6 25
3193.	" 8 × 10	6 25	8 25

The Developing Outfit includes, Lantern, Two Trays, Developer, Hypo-Sulphite Soda, Alum, Graduate, Camel's Hair Brush.

The Printing Outfit includes, Frame, Paper, Two Trays, Toning Solution, Glass Form, Excelsior Trimmer, Paste, Mounts, Litmus Paper, Brush.

CARBON MATERIALS.

THE CARBON PROCESS.

The lack of permanency and of variety in color in the ordinary silver print photographs, has led to a demand for something more satisfactory in artistic effects and in freedom from fading.

This condition applies to the work of amateurs, as well as the portraits from professional photographers.

The Carbon Process perfectly meets this demand, and affords the most beautiful results attainable from the negative. While not of recent origin, the difficulties in working the carbon process have prevented its general introduction and development.

As a matter of fact, it is quite as easy and requires little more time than the silver print process.

Frank Rowell the head chemist of The Blair Camera Co., was the American pioneer in carbon work and all of the carbon materials supplied by this Company, are prepared under his personal supervision.

Carbon photographs made by Mr. Rowell in 1876 and exhibited at the Company's Warerooms, and are as perfect as on the day they were made.

PRICE LIST.

Carbon Tissue in Warm Black, Engraving Black, Sepia, Red Chalk Rouge, Purple, Blue, Green, Chocolate Brown and Transparency Tissue.

All of above colors,	20 in. per roll,	\$2 00
"	" 30 "	"	3 00
Transparency Tissue	20 "	"	2 75
"	" 30 "	"	4 00
*Transfer Paper,	20 "	"	1 00
"	" 30 "	"	1 50
Cat. No. 3200.	Flexible Support, per sheet, 20 × 24	\$0 50
" 3201.	Waxing Solution, " 4 oz. bottle	50
" 3202.	Sensitizing " " 16 oz. "	50
" 3203.	Actinometers,	1 25
" 3204.	Squeegee, 8 in.	50
" 3205.	¼ Yard Rubber Cloth,	25
" 3206.	Tray for Sensitizing,	75
" 3207.	1 Pound Alum,	12

*Transfer Paper in three grades. — Light, for small work; Medium, for finishing in ink; Heavy, for large work in crayon.

Cat. No. 3208.

OUTFIT FOR CARBON PRINTING.

SOLD AT \$7.00, includes

1 Dozen Tissue, assorted colors, 12 × 20, \$2.50; 1 Dozen Transfer 12 × 20, \$1.00; 2 Sheets Flexible Support, 12 × 20, \$0.50; 1 Bottle Waxing Solution, 4 oz., \$0.50; 1 Bottle Sensitizing Solution, 16 oz., \$0.50; 1 Actinometer, \$1.25; ¼ Yard Rubber Cloth, \$0.25; 1 Tray for Sensitizing, \$0.75; 1 Pound Alum, \$0.12; 1 Sheet Black Paper; 3 Sheets Blotting; Book of Instructions.

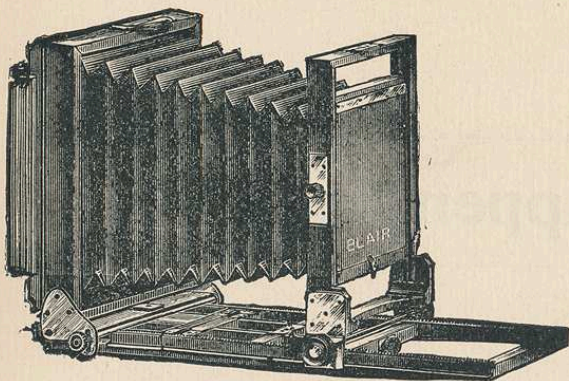
Appendix.

APPENDIX.

The following goods are new and in good order, but are of styles now superseded or found to be of too costly design, and we shall not make any more after the supply on hand is exhausted. At the very low prices named they are great bargains. In many cases the supply is quite limited and orders should be put in without delay to secure the article.

REVERSIBLE BACK CAMERAS.

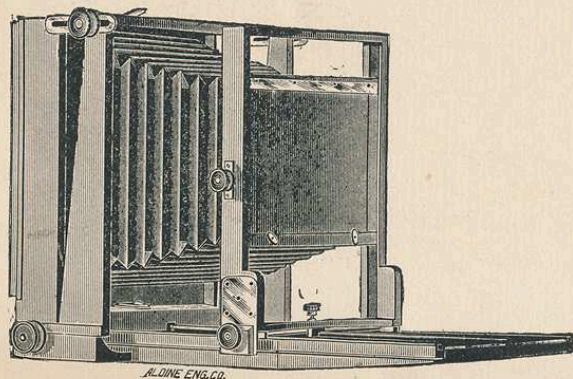
Size.	Single Swing.	Double Swing.
4 × 5	\$13 00	\$15 00
4½ × 5½	16 00	18 00
5 × 7	18 00	20 00
6½ × 8½	21 00	23 00
8 × 10	34 00	36 00



These are very similar to the latest style (see page 3), except that they are not center swing.

CHAMPION R. B. CAMERAS.

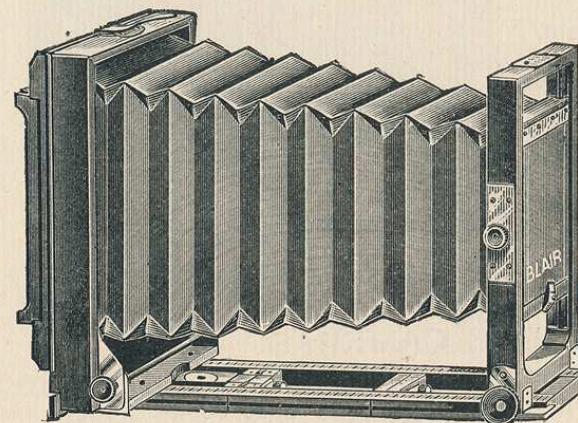
Size.	Single Swing.	Double Swing.
6½ × 8½	\$25 00	\$30 00
8 × 10	27 00	32 00



This camera is very finely finished, provided with rack and pinion, adjustments in every part, and is especially adapted for professional photographers use.

CINCINNATI R. B. CAMERAS.

Size.	Single Swing.	Double Swing.
4 × 5	\$12 00	\$14 00
4½ × 5½	13 00	15 40
5 × 7	17 00	19 00
6½ × 8½	18 00	20 00
8 × 10	21 00	24 00



These are very similar to the latest style, (see page 8), except that they are not Center Swing.

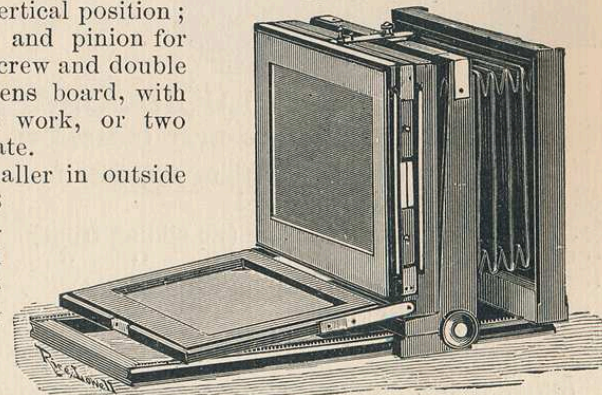
COMBINATION CAMERAS.

5 × 8 A.	\$9 00	5 × 8 B.	\$9 00
----------	--------	----------	--------

These cameras are intended more especially for stereoscopic work, with capacity (by using the extension) for working larger plates.

They are all provided with an extra bed for supporting the camera while exposing the plate in a vertical position; single swing-back, rack and pinion for focussing, improved set-screw and double sliding front, an extra lens board, with division for stereoscopic work, or two separate views on one plate.

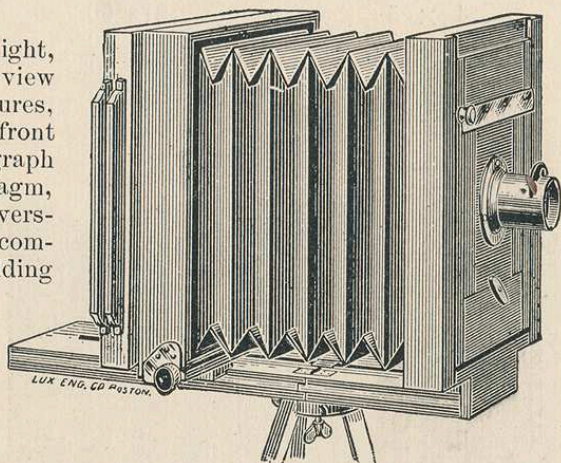
The 5 × 8 (A) is smaller in outside dimensions than our 5 × 8 (B), and was not originally designed to be used as a combination; but is now fitted for a 6½ × 8½ Patent Extension.



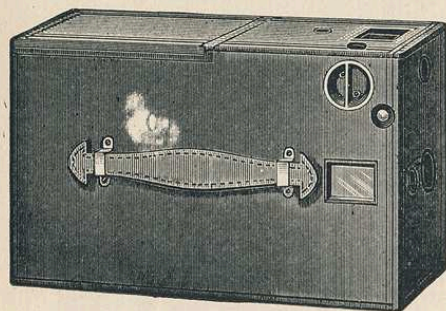
TREMONT OUTFITS.

5×7 complete with lens and tripod, \$9 00.

The outfit consists of a light, finely finished mahogany view camera, making 5×7 pictures, with swing back and rising front movements, and Lucidograph Lens with revolving diaphragm, improved Feather-Weight reversing back and plate holder combined, carrying case and folding tripod.

**HAWK-EYE CAMERAS.**

4×5 Plain Wood, model of 1890, \$ 9 00
4×5 Leather Covered, " 10 00



These are brand new, regular Hawk-Eyes, same as we sold formerly at \$18.00 and \$20.00. They have the same lenses, and will make just as good pictures as the 1891 model.

THE LUCIDOGRAPH.**PRICE LIST COMPLETE.**

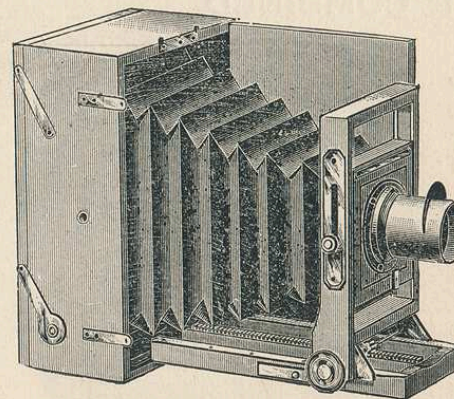
Prices given include everything requisite for work in the field. Plates and extra plate-holders excepted.

No. 1560.	For $3\frac{1}{4} \times 4\frac{1}{4}$ plate (no sliding front)	.	.	.	\$10 00
" 1561.	" $4\frac{1}{4} \times 5\frac{1}{2}$ " " " "	.	.	.	10 00
" 1561 A.	" 5×7 " (sliding front)	.	.	.	12 00
" 1562.	" 5×8 " " " "	.	.	.	12 00

WITHOUT LENS OR TRIPOD.

<i>Including One Feather-Weight Double Plate-Holder and Carrying Case.</i>					
No. 1564 A,	$3\frac{1}{4} \times 4\frac{1}{4}$ plate	.	.	.	\$6 00
" 1564 B,	$4\frac{1}{4} \times 5\frac{1}{2}$ " "	.	.	.	6 00
" 1564 C,	5×7 " "	.	.	.	8 00
" 1564 D,	5×8 " "	.	.	.	8 00

This instrument can be used for making either vertical or horizontal views, equally rigid and convenient in either position. When used in the horizontal position, the slide to the plate-holder can be drawn to the left or right. The focussing is attained by a fine rack and pinion, the front standard moving in metal guides and track. The ground-glass frame is attached by our patent method, which, as is well known, has no equal for convenience and safety. The body of the camera is made of best quality mahogany, highly polished; the interior portion of selected cherry; the bellows of A 1 rubber, card-board and silesia.

**BLAIR'S PATENT PLATE-HOLDERS.**

They are arranged to receive kits for plates any size under that of the holder (leaving, as a matter of course, sufficient difference in the size to make the frame of kits).

PRICE LIST.

No. 2081.	Size, 4×5	\$0 90
" 2082.	" $4\frac{1}{4} \times 5\frac{1}{2}$	90
" 2083.	" $4\frac{1}{4} \times 6\frac{1}{2}$	1 20
" 2084.	" 5×7	1 20
" 2085.	" 5×8	1 20
" 2086.	" $6\frac{1}{2} \times 8\frac{1}{2}$	1 50
" 2087.	" 8×10	1 65
" 2088.	" 10×12	3 30
" 2089.	" 11×14	4 20

THE ENGLISH PLATE-HOLDER.

This form of holder for Dry Plates has long been in use and acknowledged to be one of the best. The high price at which they necessarily must sell, and the bulk and weight above that of the Feather-Weight Holders, is the only reason of their not being universally in use.

Made to receive kits, and can be fitted to any camera of standard make when ordered.

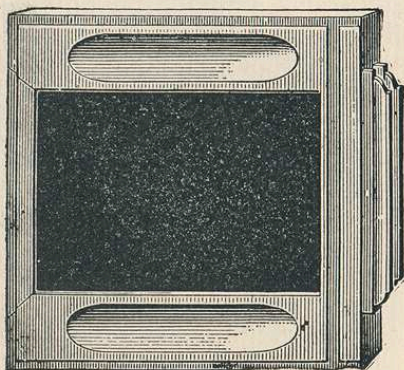
PRICE LIST.

No. 2070.	Size, $3\frac{1}{4} \times 4\frac{1}{4}$	\$1 29
" 2071.	" 4×5	1 35
" 2072.	" 5×7	1 65
" 2073.	" 5×8	1 65
" 2074.	" $6\frac{1}{2} \times 8\frac{1}{2}$	2 40
" 2075.	" 8×10	3 30
" 2076.	" 10×12	4 80
" 2077.	" 11×14	5 40
" 2078.	" 14×17	7 20
" 2079.	" 17×20	9 00
" 2080.	" 20×24	14 20

Larger sizes made single or double to order. Estimates furnished.

THE IMPROVED FEATHER-WEIGHT HOLDER AND REVERSER COMBINED.

This holder was designed expressly for the Tremont Outfit, and answers the purpose of a reversible back, as it is never necessary to shift the position of the camera on the tripod when it is desired to make a vertical picture. The weight is not more than that of a regular plate holder.



Price, \$1.00 each, with our patent registering slides.

Holders for American Optical Co., or Scovill Outfits.

4 × 5	\$ 63
5 × 8	70
6½ × 8½	85

Holders for Rochester Optical Co.'s Outfits.

5 × 8	\$ 68
-------	---	---	---	---	---	---	---	-------

EXTENSIONS,

We have a quantity of odd size and old pattern Extensions, suitable for old style Blair Cameras or for special and experimental purposes. These we will sell at very low prices.

Let us know what size you want and measurements of adjuster of your camera, and we will let you know if we can fit it.

ORTHOGRAPHIC LENS.

These Lenses are made expressly for us by a maker whose fame for his unequalled Photographic Lenses is known not only in Europe but in this country, where they are pronounced unsurpassed by any. Every Lens has both the guarantee of the maker and ourselves. They are absolutely aplanatic, can be focussed sharp to the extreme edge of the field, and are extremely rapid in action, making them very desirable for instantaneous work. They combine all the valuable qualities desirable in a Portrait or Landscape Lens,

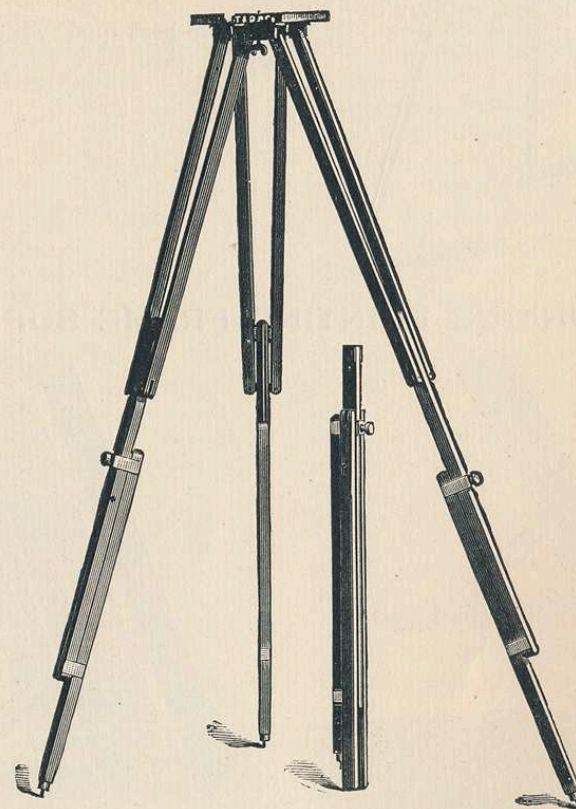
The diaphragms are made and numbered in accordance with the recommendations of the Photographic Society of Great Britain, each number being double that of the preceding one, and requiring twice the exposure,

REDUCED PRICE LIST OF ORTHOGRAPHIC LENS.

No. 1.	3¼ × 4¼	\$ 6 00
" 2.	4 × 5	7 50
" 3.	5 × 8	12 00
" 8.	14 × 28	47 00
" 9.	21 × 22	57 00

THE BLAIR COMBINATION TRIPOD.

Possessing all the qualities of the Compact Tripod, except that, owing to the size, it is not constructed in a form that will admit of being folded so compactly.



BLAIR COMBINATION TRIPOD AND ADDITIONAL LEG FOLDED.

Size No. 1 — intended for 6½ × 8½ Camera, with Extension . . . \$2 25

MAHOGANY COMPACT TRIPOD.

French polished, metal head and tips, with hand-finished trimmings.

Size 0 . . . \$6.00

IMPORTANT SUGGESTIONS

AS TO

ORDERING, SHIPMENT, AND TERMS.

THIS EDITION supersedes all former ones, and any special or outfit circulars previously published will be governed by prices herein quoted. The same, however, are subject to changes caused by fluctuations in prices of material used, etc. Buyers will receive the benefit of any reduction in price, even when not aware of the change.

Goods listed in Section A have been given a catalogue number as far as practicable, and in ordering be explicit as possible, giving name and number of article wanted; if any doubt exists in your mind, give page number, but do not mutilate the Catalogue.

Also, we would ask you to read carefully what is said of the articles you intend to include in your order, as we are compelled to fill all such of your favors by guidance of these lists, etc., and cannot be held responsible for mistakes caused by ordering without judicious reference to them.

We guarantee all goods manufactured or sold by us to be as represented, and our prices will be found on investigation to be low, compared with those of equal quality. Orders for goods of our own manufacture will be filled, if stated in the order, with the privilege of examining before paying, in accordance with our terms, which are Cash on Delivery. Express and other charges for transportation to be paid by party ordering.

Parties unknown to us, desiring goods sent C.O.D., whether with privilege of examining or not, must remit one-third the estimated amount of invoice with the order.

Write as plainly as possible, giving Name, Town, County, and State; also, Post Office address and directions for shipping—whether by Express or Freight. All orders will be shipped by Express unless otherwise requested. Small parcels, not over 4 lbs. weight, and which do not contain glass in any form, can be sent through the mail at risk of the purchaser. We do not pay postage—remit when ordering. All our goods are packed carefully, and we cannot be held accountable for any damage after a package leaves our hands.

The Express Company's charges for collecting and returning money on C.O.D. bill must be paid by party ordering goods.

Remittances may be made by Draft, Post Office or Express money orders. Amounts under \$5.00 may be sent by Postal Note.

THE BLAIR CAMERA CO.