

For Sale by  
Talbot Dyewood Chemical Co.,  
Lowell, Mass.

ILLUSTRATED CATALOGUE  
AND PRICE LIST OF



AND ALL STYLES OF  
TRIPOD CAMERAS  
AND ACCESSORIES.

MANUFACTURED BY  
THE BLAIR  
\* CAMERA COMPANY \*  
BOSTON



**T**HE wisdom of our long-standing rule, as stated in previous editions, to condense when possible, has been demonstrated by the large call for our Catalogue from the Trade, the Profession and the Amateur, and the constant increase in our business.

We list only such goods as are in active demand, not offering hundreds of articles which the Photographer never buys or uses, simply to make the boast "We issue the largest catalogue published."

We feel confident that we have unsurpassed facilities for catering to the wants of the Photographic trade, having agencies and connections which warrant us in manufacturing or ordering in large quantities, thus enabling us to turn our goods quickly and at a small margin of profit.

We issue no separate catalogue for the use of Professionals and Amateurs, but present to both, in our complete catalogue, such goods as we feel that they will need, arranged in such a manner, we trust, that either can readily make selections according to their wants.

We have aimed to provide for the most fastidious.

THE BLAIR CAMERA CO.

Boston, 1896.

# ILLUSTRATED CATALOGUE

AND

## Price List

OF

## PHOTOGRAPHIC APPARATUS

AND

## SUPPLIES.

---

MANUFACTURED AND SOLD BY

THE BLAIR CAMERA COMPANY,

FACTORIES:

BOSTON AND PAWTUCKET.

WAREROOMS:

Nos. 471-477 TREMONT STREET, BOSTON, MASS.

---

PUBLISHED BY

THE BLAIR CAMERA CO.,

Boston, Mass.

1896.



REASONS WHY  
BLAIR'S REVERSIBLE BACK CAMERAS  
ARE SUPERIOR TO ALL OTHERS.

**T**HEY are constructed to receive our Patent Extension for making negatives larger than the Camera proper. No fitting or extra charge is made, as is the case when putting our Patent Extension on Cameras of others' make. Our Adjuster and Plate-Holders are attached by a system of groove and springs which leave no screw or pin sticking out above the surface to scratch and injure the polish or hands. These Cameras are fitted with our Popular Patent Reversible Adjuster, having Spring Actuated Ground Glass Frame. This method of removing the Ground Glass Frame from contact with the Camera and keeping the Plate-Holder in position during exposure, is superior to all other methods. No better evidence of this fact is needed than the attempts of other manufacturers to copy it.

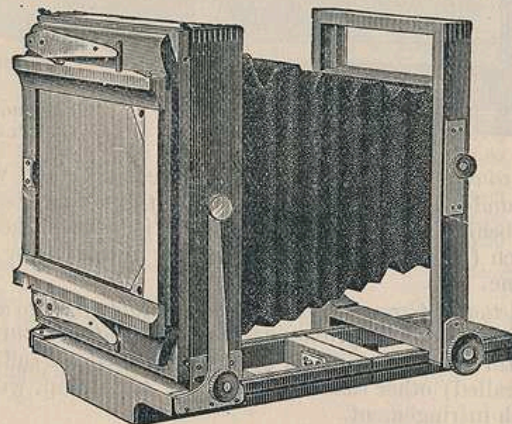
Our Cameras possess a greater focussing capacity (length of bellows) than any others, thus enabling the operator to use any make or style of lens without Extension fronts. Dealers in photographic apparatus say they are not asked to exchange our Cameras, because they are found to meet all the requirements of the photographer, whether amateur or professional.

Our Apparatus is made on a system of interchangeable parts. The above facts of superiority in utility, in connection with the beauty of style, designs, and finish, and superior quality of workmanship, place **BLAIR'S CAMERAS** ahead of all others.

Ask to be shown the latest styles, and insist upon seeing them.

CATALOGUE  
OF  
PHOTOGRAPHIC APPARATUS.

Blair's Improved Reversible Back Cameras.



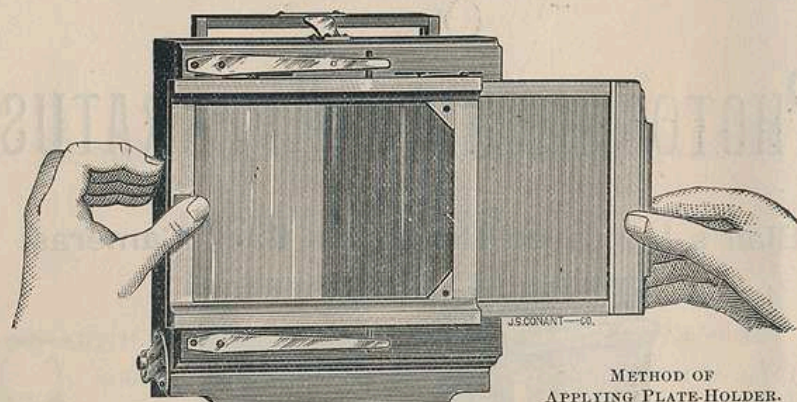
Although not as expensive a camera as the Compact (a description of which follows), yet for general work it is nearly as desirable, having the essential qualities of lightness and rigidity. The fact that there are several thousands in use, with the demand increasing every month, speaks more for their good qualities than would volumes from us. They are made entirely of the best selected mahogany, seasoned several months, are highly polished, and trimmed with hand-finished, lacquered brass mountings. Nickel trimmings to order.

The focussing is achieved by the front of camera and lens moving forward by a fine rack and pinion movement. By this method of construction and the Reversible Back, the slide from the plate-holder can be drawn to the right or left when in a horizontal position, or when changed to the vertical position can be drawn upward or downward. The desirability of this will be apparent to every photographer of experience. The reversing of the back (to enable the operator to make upright views) is accomplished by simply pressing a spring and changing the adjuster carrying the holder, from vertical to horizontal.

The sliding front is arranged so that the entire front, with bellows attached, slides up or down, and is held rigid, by the adjusting screw. It is thus less liable to leak light than the old form.

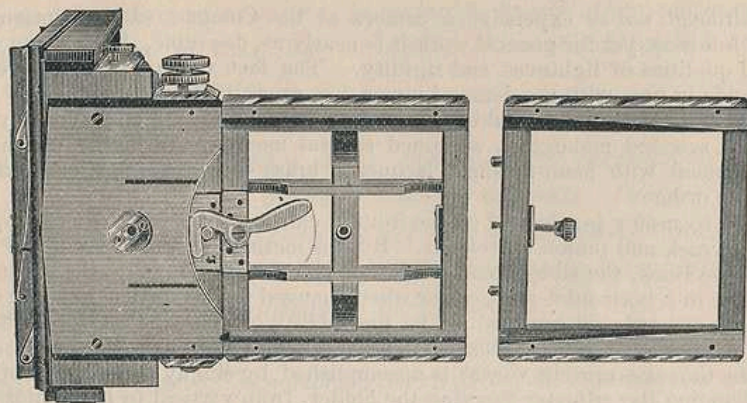
Another most unique part in its construction is the means of attaching the plate-holder and ground glass. The latter is attached by all four corners, and kept in position, wherever it may come to a bearing, by springs, and when the plate-holder is to be attached, the sideways movement of a couple of inches causes it to recede sufficiently for the holder to be slid in freely.



METHOD OF  
APPLYING PLATE-HOLDER.

without a spring to retard its motion and jar the camera; and when in position, and the ground-glass frame, acted upon by the spring, is released, the latter lies firmly behind the holder — all of which is accomplished without the touching of a catch (as, indeed, there is none), or removing or swinging the ground-glass frame.

All Spring Actuated Ground-Glass Frames movably fixed to allow the Plate-Holder to be placed behind the frame are infringements on our patents, and persons manufacturing, or causing to be manufactured, or selling adjusters, or adapters (so called) other than those bearing our stamp, will be held responsible for such infringement.



SECTIONS OF THE BED.

The bed is made in three sections, the outer or third one removable for all ordinary work; this section will not as a rule be required in the field. The method of clamping the hinged joint of first and second sections in the bed, in all sizes above  $4\frac{1}{4} \times 5\frac{1}{2}$ , is such that it can be done quickly, and by pressure on the outer end of the hook lever it becomes tighter as the pressure is increased, thus combining the well-known merits of the screw-clamp, and the ease and rapidity of this movement. The bed, in all sizes above  $4\frac{1}{4} \times 5\frac{1}{2}$ , is constructed with arrangements for attaching the tripod in

two different places, thus allowing the camera to be properly balanced on the tripod, when using lenses of extra long focal length, or when using an extension. Unless otherwise specified, all orders for these cameras will be filled fitted with Feather-Weight Holders.

ANY COMBINATION for different sizes of cameras can be made by using adjusters for smaller plate-holders than the original size of the camera proper.

By removing the Reversible Back Adjuster and applying our Patent Extensions (reversible), we have a camera enabling the operator to use a size larger plate. (See Extension List, page 9.)

PRICE LIST OF "IMPROVED" REVERSIBLE BACK CAMERAS.

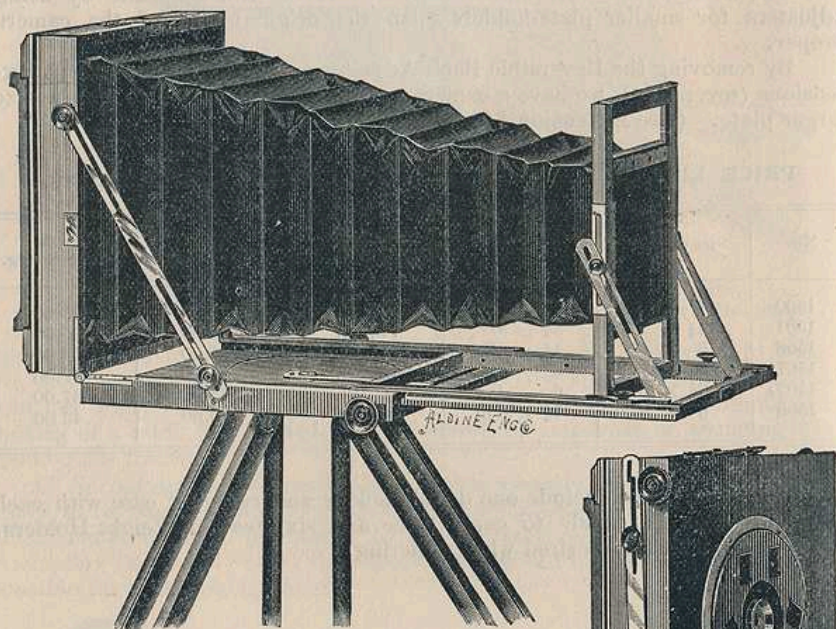
No.	Size of Plate.	Size of Lens Board.	Capacity for Length of Focus.	Price Single Swing.	Price Double Swing.
1500	4 × 5	3 $\frac{3}{8}$ in. sq.	12 in.	\$23.00	\$25.00
1501	4 $\frac{1}{4}$ × 5 $\frac{1}{2}$	3 $\frac{3}{8}$ "	14 $\frac{1}{2}$ in.	28.00	30.00
1506	5 × 7	4 $\frac{1}{2}$ "	17 in.	31.00	33.00
1507	5 × 8	6 "	18 in.	35.00	37.00
1507A	6 $\frac{1}{2}$ × 8 $\frac{1}{2}$	6 "	18 in.	35.00	37.00
1508	8 × 10	7 $\frac{1}{2}$ × 6 in.	20 in.	40.00	43.00

The above prices include one double holder and carrying case with each camera. Cases are made to carry three and six Feather-Weight Holders. Please state which is desired when ordering.



## The English Compact Reversible Back Camera.

PATENTED.



Nos. 1406-1409 FULLY OPENED.

As the title infers, compactness is the principal feature of this Camera. While we have in it all the desirable facilities possible, combining great lightness with rigidity, perfection of detail with simplicity and ease of working, we have in the smallest space, and with the least weight, every convenience and facility, with several new movements and devices peculiar to this Camera alone.

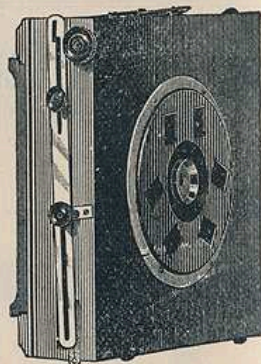
The Camera, when closed, measures in thickness in the  $5 \times 7$ ,  $5 \times 8$ , and  $6\frac{1}{2} \times 8\frac{1}{2}$  size,  $3\frac{1}{2}$  inches; in the  $8 \times 10$ , 4 inches. The partial front view of the Camera, folded, shows the sunken tripod top, with clamping screw in centre, the centre of which (the clamping screw) is bored to receive a regulation tripod screw, thus enabling the operator to use any other form of tripod than that supplied with the Camera.

These Cameras are arranged to use the Blair Rigid Extension.

Adjusters or rigid form extensions fitted to these Cameras are interchangeable with those belonging to the Improved Reversible, and Improved Cincinnati R. B.

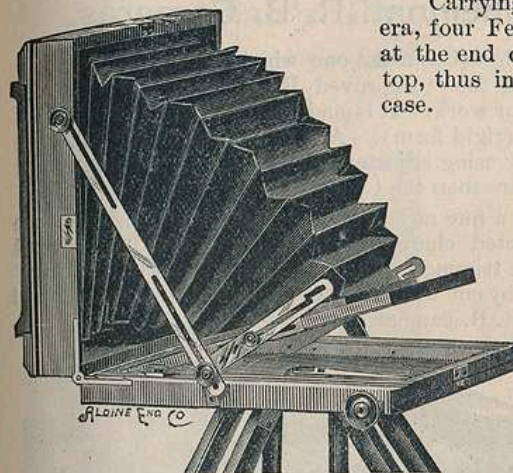
Unless otherwise specified, all orders for these Cameras will be filled fitted with Feather-Weight Holders.

The price includes one F. W. Mahogany Plate Holder, fitted with hard rubber slides, Special Compact Tripod and Carrying Case.

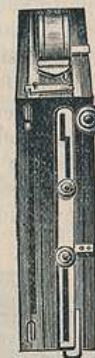


Nos. 1406-1409 FOLDED.

Carrying Cases are made to carry Camera, four Feather-Weight Holders arranged at the end of the Camera, with Tripod on top, thus including the entire outfit in the case.



Nos. 1406-1409 PARTLY OPENED.



Nos. 1406-1409 FOLDED.

The  $3\frac{1}{4} \times 4\frac{1}{4}$  and  $4 \times 5$  have metal tripod top, instead of wood, which are not sunk as deep as the wooden tops.

Our English Compact is the perfection of high grade view cameras, and in this class of apparatus is WITHOUT AN EQUAL IN THE WORLD. The Cameras and Holders supplied with them, are made of best selected mahogany, French polished, and trimmed with hand-finished brass mountings. In convenience, in style, and in finish they are beyond criticism.

### PRICE LIST ENGLISH COMPACT R. B. CAMERAS.

No.	SIZE.	SIZE OF LENS BOARD.	CAPACITY FOR LENGTH OF FOCUS.	PRICE OF DOUBLE SWING.
1406 A	$3\frac{1}{4} \times 4\frac{1}{4}$	$2\frac{1}{4} \times 3\frac{1}{4}$	12 in.	\$35 00
1407 A	$4 \times 5$	$2\frac{1}{4} \times 3\frac{1}{2}$	14 "	35 00
1406	$5 \times 7$	$3\frac{1}{2}$ in. sq.	17 "	40 00
1407	$5 \times 8$	$4\frac{1}{2}$ "	18 "	45 00
1408	$6\frac{1}{2} \times 8\frac{1}{2}$	$4\frac{1}{2}$ "	18 "	45 00
1409	$8 \times 10$	6 "	20 "	50 00
1410	$10 \times 12$	$6 \times 7\frac{1}{2}$	26 "	60 00

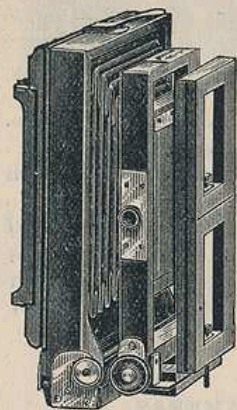
NOTE: The English Compact Cameras are now ALL made with DOUBLE SWING and so constructed that the back may be moved forward when using extreme wide angle lens, to avoid interference with the bed.



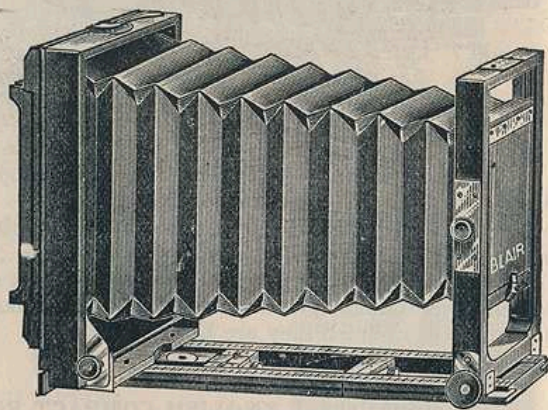
## The Improved Cincinnati R. B. Cameras.

In this Camera we have designed to make one which, though thoroughly well made, is less expensive than the "Improved R. B. Camera," and yet complete and quickly adjusted for work. It is made to receive our well-known Patent Adjuster and Extension (rigid form). Any combination for different sizes of Cameras can be made by using adjusters for smaller plate-holders and extensions for larger plate-holders than the Camera proper.

The focusing is attained by a fine rack and pinion movement. They are made entirely of the best selected cherry and mahogany, seasoned several months, are highly polished and trimmed with hand-finished brass mountings and is the same as represented by cut with the exception of improved central swing similar to the improved R. B. camera.



Nos. 1400-1405. FOLDED.



Nos. 1400-1405. EXTENDED.

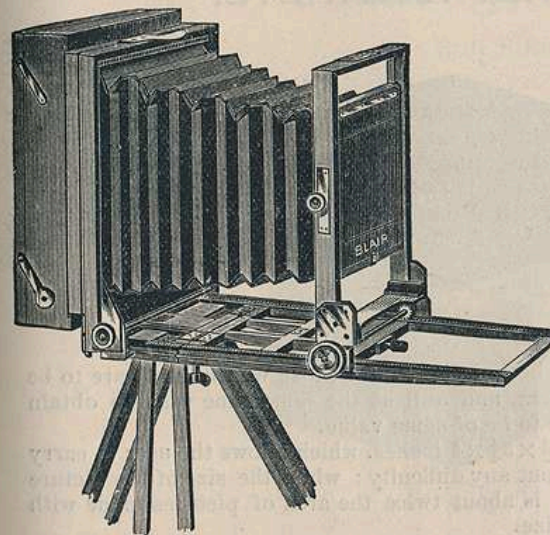
Unless otherwise specified, all orders for these Cameras will be filled, fitted with Feather-Weight Holders. By removing the Reversible Back Adjuster and applying our Patent Extension (reversible) we have a Camera enabling the operator to use a size larger plate. The price includes one Double Plate-Holder and Carrying Case.

### PRICE LIST IMPROVED CINCINNATI R. B. CAMERAS.

No.	SIZE OF PLATE.	SIZE OF LENS BOARD.	CAPACITY FOR LENGTH OF FOCUS.	PRICE.	
				S. S.	D. S.
1400	4 × 5	3½ in sq.	9 in.	\$20 00	\$22 00
1401	4½ × 5½	3½ "	10½ "	22 00	24 00
1402	5 × 7	4½ "	12½ "	28 00	30 00
1403	5 × 8	6 "	14 "	30 00	32 00
1404	6½ × 8½	6 "	14 "	30 00	32 00
1405	8 × 10	7½ × 6 in.	17 "	35 00	38 00

## Blair's Patent Extensions.

The only practical device for using plates of a larger size than provided for by the camera proper.



New Model Extension applied to Improved Reversible Back Camera.  
No. 1543 attached to 1503.

It often occurs that the possessor of a camera desires *very much* to make an occasional picture larger than his camera is capable of making.

BLAIR'S PATENT EXTENSION is an article which meets this want, being a contrivance for placing the plate a sufficient distance from the back of Camera proper to allow the rays to spread to the size of plate to be used on the Extension.

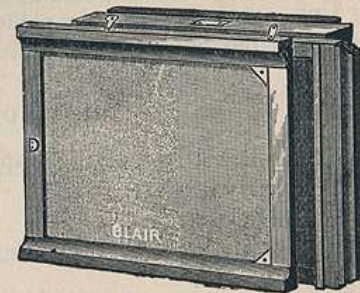
Thus, one Camera may be made to answer the purpose of two with a saving in time, money, and convenience.

The illustrations will show at a glance the design of the Extension and method of attaching to the camera. Extensions may be applied to any of our "Improved," "Cincinnati," or "Compact" Reversible Back Cameras, without fitting, and fitted to any similar camera of other makers at an extra expense rarely exceeding two dollars.

### REDUCED PRICE LIST OF EXTENSIONS.

Prices include one F. W. Holder and canvas carrying case, with strap and handle, French polish.

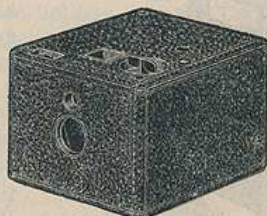
1540	5 × 8	Extension for 4½ × 5½ Camera.	\$5 00
1541	6½ × 8½	" " 5 × 7 "	7 00
1542	8 × 10	" " 5 × 7 "	7 00
1543	8 × 10	" " 5 × 8 "	7 00
1544	8 × 10	" " 6½ × 8½ "	7 00
1545	10 × 12	" " 5 × 8 "	9 00
1546	10 × 12	" " 6½ × 8½ "	9 00
1547	11 × 14	" " 5 × 8 "	11 00
1548	11 × 14	" " 6½ × 8½ "	11 00
1549	11 × 14	" " 8 × 10 "	11 00
1549A	11 × 14	" " 10 × 12 "	11 00
1549B	14 × 17	" " 8 × 10 "	13 00



New Model Extension with spring actuated ground-glass and Feather-Weight Holder.  
No. 1540-1547.



## THE BABY HAWK-EYE.



The Baby Hawk-Eye has been designed for those who do not care to be encumbered with a large camera, and still at the same time wish to obtain photographs of a sufficient size to be of some value.

The dimensions are but  $2\frac{1}{2} \times 3\frac{1}{4} \times 4$  inches, which allows the user to carry the camera in the pocket without any difficulty; while the size of the picture measures  $2 \times 2\frac{1}{2}$  inches, which is about twice the area of pictures made with any other cameras of similar size.

All of the improvements and advantages of the larger cameras are furnished, including a brilliant finder, and automatic register which always shows when an exposure is made.

The shutter is very reliable, fitted for both time and instantaneous work, and never gets out of adjustment, is always set, and a slight pressure upon a lever permits the light to strike the sensitive surface of the film and at the same time prepares itself for the next exposure.

Film for this camera is furnished in rolls sufficient for making 12 exposures, and can be loaded and unloaded in broad daylight.

The process of making photographs is so simple, it is hardly necessary to consult the guide book which is furnished.

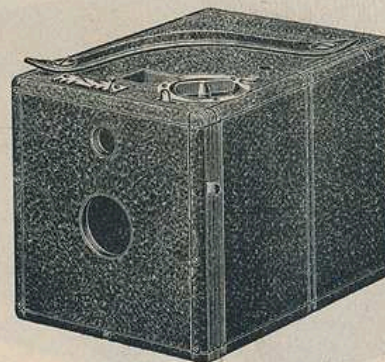
## PRICE LIST.

The Baby Hawk-Eye, with film for 12 exposures, . . . . .	\$6 00
Leather Carrying Case, . . . . .	1 00
Developing Outfit, . . . . .	1 00
Printing Outfit, . . . . .	1 00

(This Camera uses 2 inch Sunlight film, as listed on page 37.)

## THE HAWK-EYE, JR.

For Roll Film or Glass Plates.



The Hawk-Eye, Jr., is without doubt, the best hand camera now on the market that is furnished at a moderate price. Many new improvements have been added which increases the value, while the price has been reduced.

The latest device for indicating exposures never fails, and the index on the tally always shows at a glance the number of pictures taken.

The dimensions are but  $4\frac{1}{4} \times 4\frac{3}{4} \times 6$  in. has a capacity for film of 25 exposures, making a photograph  $3\frac{1}{2} \times 3\frac{1}{2}$  inches. Different from other cameras, no attachments or separate parts are used when adjusted for dry plates, as the holder fits neatly in the rear end of the camera.

The lens is a single achromatic, set focus, of extra quality, and the shutter is adapted for both time and instantaneous work; the speed is governed as to time, which is an advantage over most cameras of this size. An extra brilliant square finder reflects the object very distinctly and centers the view accurately upon the surface of the film or plate.

The covering of the box is of the best grain leather, and everything pertaining to the camera is simple and easily manipulated.

## PRICE LIST.

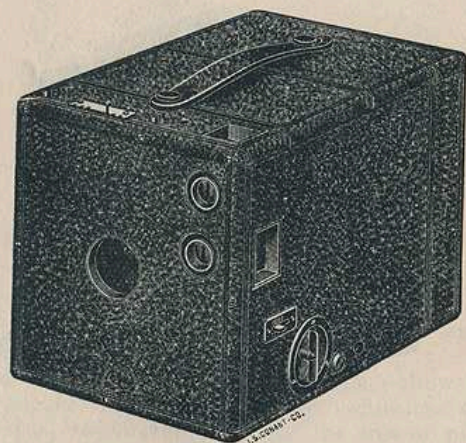
The Hawk-Eye, Jr, covered with black grain leather, . . . . .	\$8 00
Double Holders, for Dry Plates, . . . . .	1 00
Glass Dry Plates, per dozen. . . . .	50
Developing Outfit, . . . . .	1 50
Printing Outfit, . . . . .	2 00

(This Camera uses  $3\frac{1}{4}$  inch Sunlight film, as listed on page 37.)



## THE 4X5 HAWK-EYE, JR.

For Roll Film or Glass Plates.



There has been a long felt need among the amateur photographers for a camera adapted for both plates and roll films, making a picture as large as 4x5 inches in size, being compact, and still furnished at a moderate price.

The 4x5 Hawk-Eye, Jr., supplies this want in every way being very small for a camera making so large a picture, measuring but  $5\frac{3}{4} \times 6\frac{1}{2} \times 9$  inches, and still having capacity for roll film and plate holder. The design is similar to the smaller Hawk-Eye, Jr., although different in some respects.

The lens is a first-class single achromatic, of the best quality, and is arranged with a focusing lever and scale; both vertical and horizontal finders, interior ground-glass screen, automatic registering tally showing number of exposures made, and two tripod plates for time work are provided.

The method of setting the shutter is similar to that of our higher priced cameras and has a time exposure stop, which is easily operated without any jar to the camera.

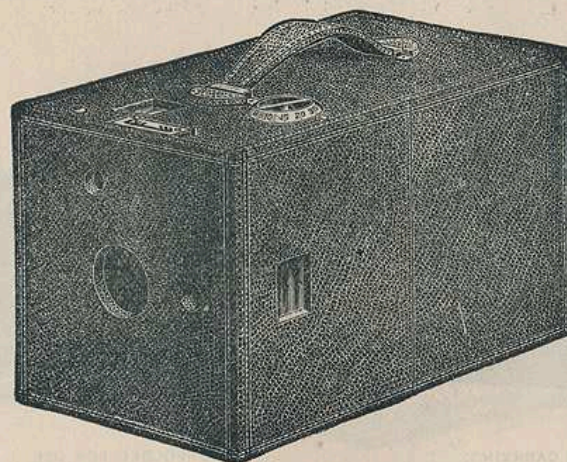
This camera uses the Sunlight film, and can be loaded and unloaded in broad daylight.

## PRICE LIST.

The 4x5 Hawk-Eye, Jr., covered with black grain leather,	\$16 00
Double Holders, for dry plates,	1 00

(This Camera uses 4 inch Sunlight film, as listed on page 37.)

## THE HAWK-EYE.



Several new improvements have been made in the 1891 model, which will still further increase the popularity of the Hawk-Eye.

The method of setting the shutter (which is of the adjustable speed, safety type, as before) has been simplified, and a new time-exposure stop, which is in quickness and convenience fully equal to a pneumatic release, has been provided.

The focusing index and screw have been combined in one part and located close by the push-button; the rigidity of the inside bellows frame has been greatly increased; and, last but not least, the width of the Hawk-Eye has been decreased nearly an inch, thus improving the appearance of the camera and making it a better shape to carry.

Feather-Weight Holders for glass plates or cut films, or an improved roll holder with automatic tally, containing transparent film for 25 to 50 exposures without reloading may be used in the same camera.

Both vertical and horizontal finders, interior ground-glass screen, and two tripod plates for time work are provided.

Lenses of other make, provided they are of suitable size and focal length, may be fitted to the Hawk-Eye if preferred.

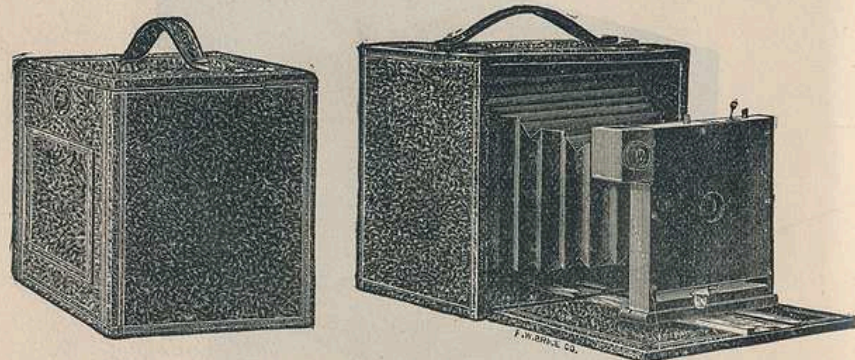
## PRICE LIST.

No. 1523.	The Hawk-Eye Camera, 4x5, polished wood case	\$15 00
" 1525.	Same as above, covered with black grain leather	17 00
" 1531.	Improved Roll Holder with Automatic Tally (empty)	9 00
" 1575.	Blair Rapid Rectilinear Lens	12 00
" 1653.	Taylor & Hobson Lens, with Revolving Diaphragm	15 00
"	" " " Iris	25 00

(The 4x5 Hawk-Eye Roll Holder uses 4 inch Sunlight film. For price list, see page 37.)



## THE 4x5 FOLDING HAWK-EYE.



FOLDED FOR CARRYING.

UNFOLDED FOR USE.

This camera possesses all the advantages imaginable for a hand camera. Among the prominent features are a swing back and sliding and swinging front. It is also provided with plates, for use of tripod for both vertical and horizontal pictures; is very compact, measuring but  $5\frac{3}{4} \times 6\frac{1}{2} \times 7$  inches, and weighs when ready for work about two pounds. The covering is of best grain leather, the wood parts being made of mahogany and highly polished.

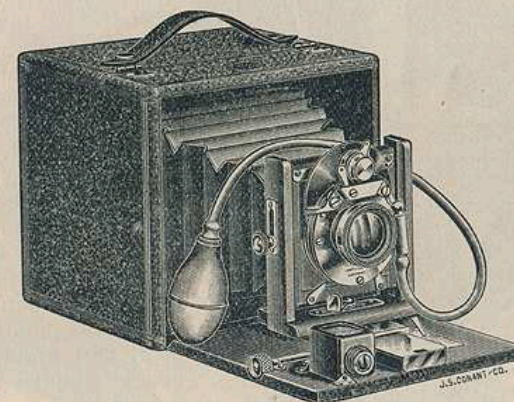
Holders for plates, cut film or roll film can be used interchangeably, and although the material and workmanship of this camera are of the best, we are enabled to offer it to our customers at a moderate price.

The shutter is similar to the one used in the '91 Hawk-Eye but with a number of additional improvements and is adapted for both time and instantaneous work.

## PRICE LIST.

The 4x5 Folding Hawk-Eye, with single Achromatic Lens, and double plate holder, . . . . .	\$15 00
Extra Plate Holders, each . . . . .	1 00
Improved Automatic Roll Holder, empty, . . . . .	9 00

## THE SPECIAL FOLDING HAWK-EYE.



For those who desire a first-class folding camera, with double rapid rectilinear lens, of first quality, and still at a moderate price we have designed the Special Folding Hawk-Eyes.

The wood work of this camera is mahogany throughout and highly polished. Is fitted with swing back, rising and falling front, has a spring actuating ground-glass which can be removed if a Roll Holder is desired. The box is covered with the best grain leather, and measures but  $5 \times 6 \times 6\frac{1}{4}$  inches, in the 4x5, and  $6 \times 7\frac{1}{4} \times 8\frac{3}{4}$  in the 5x7 size.

The lens is of the best (which accounts for the good results obtained) and fitted with the new improved Crown Shutter with pneumatic release, with device for regulating the time of an exposure. Our new rack and pinion movement for fine focusing is also an advantage to be considered; tripod plates for both vertical and horizontal pictures are provided.

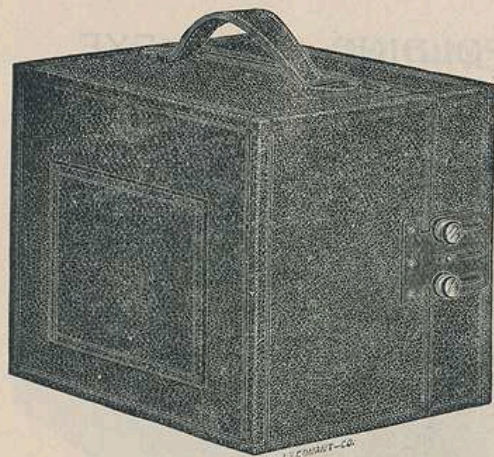
In fact, all improvements imaginable are included.

## PRICE LIST.

	4x5	5x7
Special Fold'g Hawk-Eye, with one plate holder, no lens, . . . . .	\$18 00	\$22 50
With double R. R. Lens, and Imp. Crown Shutter, . . . . .	29 00	40 00
With Kamaret Lens, and B. & L. Iris Diap. Shutter, . . . . .	40 00	50 00
Extra Plate Holders, each . . . . .	1 00	1 25
Imp. Automatic daylight Roll Holder, . . . . .	9 00	11 00



## THE 5×7 FOLDING HAWK-EYE, No. 1.



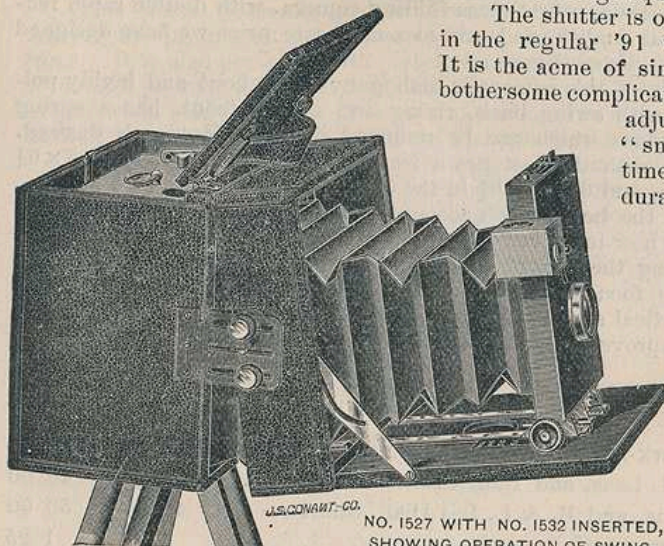
NO. 1527 FOLDED.

requirement.

Plate holders or roll holder are adjusted in exactly the same manner the "connecting frame" used in other cameras not being required.

The shutter is of the same style as in the regular '91 model Hawk-Eye. It is the acme of simplicity; free from bothersome complications, and instantly adjustable in speed for "snap shots" or for time exposures of any duration.

The lens is a double achromatic Rapid Rectilinear, of excellent working capacity, and is provided with revolving diaphragm.

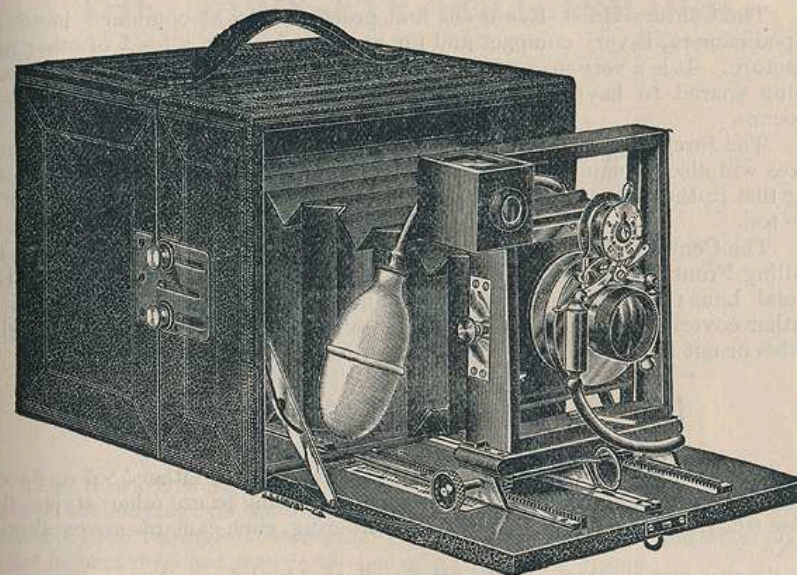
NO. 1527 WITH NO. 1532 INSERTED,  
SHOWING OPERATION OF SWING.

## PRICE LIST.

- No. 1527. The Folding Hawk-Eye, 5×7, with one F.W. Double Holder for glass plates, or cut films . . . \$37 00  
 No. 1532. Improved Roll Holder with Automatic Tally . . . 11 00

(The 5×7 Hawk-Eye Roll Holder uses 5 inch Sunlight film. For price list, see page 37.)

## THE FOLDING HAWK-EYE, No. 2.



The strength of the above combination from a photographic standpoint will be readily recognized, and the beautiful finish and fine workmanship of camera, lens, and shutter also make this a most desirable outfit for those who want the very best.

The No. 2 model has in addition to the double swing, a double sliding front, thus giving every adjustment which will ever be required.

This camera is of extra fine hand finish throughout, the wood work being ebonized and French polished, and the leather of the finest grain.

The lenses are guaranteed to give results equal to any known make of similar dimensions, and if in any way unsatisfactory, may be returned and exchanged.

The Bausch and Lomb Iris diaphragm shutter is the latest and most popular model, and may be set for automatic exposures of from 1-100 of a second to 3 seconds with great accuracy, as well as for longer exposures in the usual manner. The lightness of this shutter, and freedom from noise and jar in quick exposures, also commend it.

## PRICE LIST.

- No. 1528. The No. 2 Fold'g Hawk-Eye, as above with one F.W. Holder for plates or cut films, . . . \$55 00  
 " 1532. Hawk-Eye Improved Roll Holder, with Aut. Tally, . . . 11 00

(The 5×7 Roll Holder uses 5 inch and the 6½×8½—8½ inch Sunlight Film.  
 For price list, see page 37.)



## THE CENTURY HAWK-EYE.

6½ × 8½ Folding.

CENTURY, NO. 1530.

ROLL HOLDER, NO. 1533.

The Century Hawk-Eye is the first practical 6½ × 8½ combined hand and tripod camera, is very compact and not any heavier than a 5 × 7 of other manufacture. It is a very magnificent piece of photographic apparatus, no expense being spared to have everything pertaining to it the best we can make or procure.

The foregoing description and illustrations of the 5 × 7 Folding Hawk-Eyes will also explain the construction and operation of the Century, excepting that in the latter the opening for the holders is at the side instead of at the top.

The Century Hawk-Eye is fitted with a Double Swing, Double Rising and Falling Front, Bausch & Lomb Automatic Diaphragm Shutter, and Rapid Universal Lens; also Aluminum shutter and lens mountings, and the best of leather coverings. Price complete as above, with one F.W. Holder for glass plates or cut films. \$85 00; or with Improved Roll Holder, \$95 00.

## No. 3 FOLDING HAWK-EYES.

5 × 7, NO. 1525.

6½ × 8½-2, NO. 1530A.

The Folding Hawk-Eye Cameras will be supplied in either 5 × 7 or 6½ × 8½ size without lenses or shutters for customers desiring to use other styles than those which we list. For convenience in ordering, such cameras are catalogued as No. 3.

Lenses and shutters may be fitted, adjusted and focused at our factory at slight additional expense.

Price of No. 3 Folding Hawk-Eye, 5 × 7 . . . . .	\$27 50
“ “ “ “ 6½ × 8½ . . . . .	42 50
“ Hawk-Eye Imp'd Roll Holder, with Aut. Tally for 6½ × 8½ . . . . .	13 00

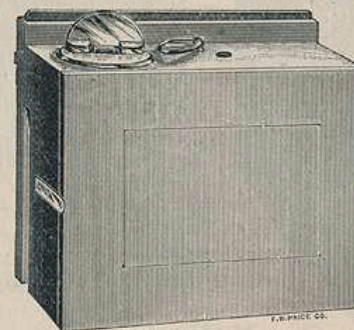
To afford opportunity for comparison of the prices of different lenses suitable for these cameras, the following list is furnished; but as we do not carry some of them in stock, a slight delay is liable to occur in obtaining the lens from the manufacturer.

In estimating complete cost, add to the price of the lens selected that of the No. 3 Hawk-Eye, and if the Bausch & Lomb Shutter is desired also add \$13 50 to \$15 50, if for 5 × 7; or, \$14 50 to \$15 50, if for 6½ × 8½.

Aluminum, \$4 00 to \$6 00.

	5 × 7	6½ × 8½
Gray, Periscope	\$15 00	\$18 00
Bausch & Lomb, Vexox	15 00	20 00
“ “ Rapid Vexox	10 00	25 00
Blair, Rapid Rectilinear	20 00	30 00
Beck, “	22 50	34 00
Darlot, “ Hemispherical	25 00	30 00
Alvin G. Clark,	28 00	36 00
Gundlach, Rapid Rectigraphic	30 00	38 00
Zeiss, Anastigmat, Series III	44 00	66 00
“ “ “ IIIa	33 00	47 00
Taylor, Taylor & Hobson, Rapid Rectilinear	27 00	40 00
Swift, Rapid Paragon	37 25	42 30
Suter,	40 00	50 00
Voigtlander, Rapid Euryscope	40 00	52 00
“ Extra “	45 00	52 00
Dallmeyer, Rapid Rectilinear	45 00	57 00
“ Extra “	74 00	86 00
Ross, Rapid Symmetrical	46 00	52 00
Steinheil, Series II	48 00	60 00

## THE HAWK-EYE ROLL HOLDER.



The Hawk-Eye Roll Holder is the most reliable Roll Holder now on the market, embodying all the improvements and advantages imaginable, are of the same focal register as the regular Feather-Weight Holders and when placed in the camera does not require the use of a connecting frame.

These Roll Holders may be adapted to former models of the Hawk-Eye Camera, as well as cameras of other manufacture, at a small additional expense to cover the cost of fitting. The construction is such that there is not the slightest danger of any of the parts giving out, it being very rigid throughout. The wood parts are of the best seasoned cherry and highly polished. Among the advantages of the Hawk-Eye Roll Holder is that it can be loaded and unloaded in broad daylight with the new "Sunlight" Film which feature will be appreciated by all, especially those who have at times been unable to secure the use of a dark-room when travelling through the country.

This film is furnished in rolls from 12 to 25 exposures and adjusted for use in a very simple manner, and is also marked in such a way that it is easily determined where to cut off the exposures when ready for developing, which is an advantage over the small perforations made by the markers on other Roll Holders.

The automatic tally has been further improved and requires no attention but simply points to a figure denoting the number of exposures made.

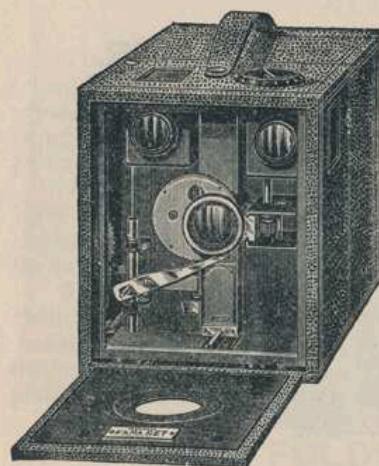
## PRICE LIST.

4 × 5 Hawk-Eye Roll Holder, . . . . .	\$ 9 00
5 × 7 “ “ “ . . . . .	11 00

The Model supplied for the Special Hawk-Eye, as listed on page 15, is very small in dimensions and made entirely of mahogany, and highly polished.



## THE KAMARET.



No. 1535 AND 1536.

is also provided with an Automatic Tally showing just how many pictures have been taken and how much film there is left. A double swing-back attachment for using glass plates or cut films in the regular double holder, may be obtained and applied to the Kamaret without fitting.

Other points of superiority are the easy manner of removing the film roll and reloading the Kamaret; the beautiful finish and thorough mechanism of the working parts, the clear, clean-cut work of the lens, the liberal size and brilliant illumination of the two finders, and fine quality of the leather covering.

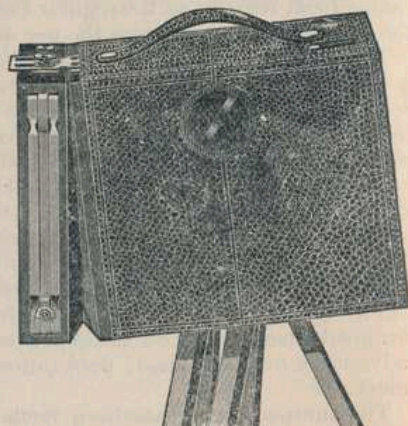
The film rolls may be returned to us to have the pictures developed and printed, or we will supply an outfit for such purpose, as preferred.

Compactness without folding is the prominent feature of the Kamaret, it being nearly one-third smaller than any other camera of equal capacity, viz.:—50 4 x 5 pictures without reloading. Size complete  $5\frac{1}{2} \times 6\frac{1}{2} \times 8\frac{3}{4}$  in. 50 5x7 pictures without reloading. Size complete  $6\frac{1}{2} \times 8\frac{3}{4} \times 10\frac{1}{4}$  inches. To make exposures with Kamaret one, need only push a spring.

The same spring when pulled out again after winding up the used film, prepares the camera for the next picture.

All other cameras have an additional attachment for setting the shutter—one more thing to be looked after

The Kamaret has a positive safeguard against "double exposures" (or taking two pictures on the same field and thus spoiling both) and "blanks," and



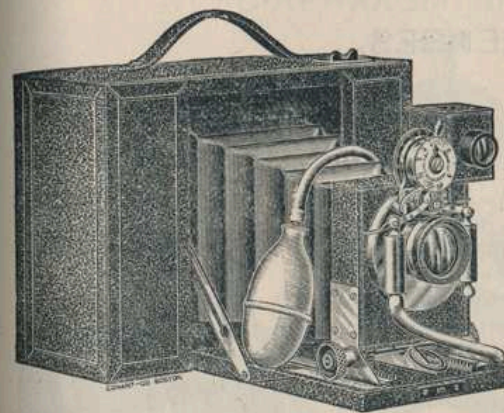
No. 1535 WITH No. 1537 ATTACHED.

## PRICE LIST.

	4 x 5	5 x 7
The Kamaret fitted with double combination Rapid Rectilinear Lens, and leather carrying case, . . . . .	\$12 00	\$15 00
Double Swing Attachment for glass plates or cut films, with one Feather-Weight Holder, . . . . .	5 00	6 00

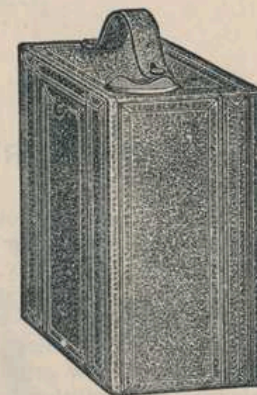
(The 4 x 5 Kamaret uses  $4\frac{1}{2}$  in. film; the 5 x 7 Kamaret uses  $5\frac{1}{2}$  in. film.  
For price list, see page 36.)

## "THE 400" CAMERA.



UNFOLDED FOR USE.

No. 1565.



FOLDED FOR CARRYING.

Size, folded,  $6\frac{1}{2} \times 3\frac{1}{2} \times 8\frac{1}{2}$  inches; Weight, 4 pounds; Capacity, 50 4 x 5 pictures. Fitted with Bausch & Lomb Shutter, and 8 in. R. R. Lens.

The "400" is positively the most compact 4 x 5 camera for roll film in existence, and the highest grade folding hand camera in the world. High priced, it may be considered, but if you care to possess the most marvellously beautiful, most wonderfully compact and most perfect working piece of photographic apparatus ever devised, you will not regret the investment.

Wood cuts and type can convey but a poor idea of the appearance of the camera. Every exposed part inside and out, when folded or unfolded is covered with the finest selected morocco leather, except the brass work which is hand finished and lacquered.

The second illustration shows the extreme convenience of the shape (which is quite like a book) when folded, and only  $3\frac{1}{2}$  in. thick, but the bellows capacity is nevertheless such that a lens of longer focus than usually employed with 4 x 5 cameras is fitted. It is an 8 inch Rapid Rectilinear, and with large opening gives beautiful definition to the extreme edges of the field.

The shutter may be set for automatically timed exposures of from 1-100 of a second to 3 seconds with great accuracy, as well as for longer exposures in the usual manner.

## PRICE LIST.

Price, with roll of film, for 50 exposures, . . . . .	\$50 00
Attachment for plates, with one Feather-Weight Holder, . . . . .	10 00

("The 400" uses  $5\frac{1}{2}$  inch film. For price list see page 36.)



## LENSES.

## BLAIR RAPID RECTILINEAR LENS.

This lens is made complete in our Boston factory, the glass used being of the superior quality prepared in Jena, Germany, and universally recognized as unequalled for photographic purposes.

The success of our new departure in manufacturing high grade lenses has been such that we have put in several new grinding machines and otherwise enlarged our facilities in this department.

The Blair Rapid Rectilinear Lens was designed especially for use with the Hawk-Eye Camera, but we are now prepared to supply them separately and at a price lower than that of any other lens of equal quality. We shall for the present make but two sizes, as below.



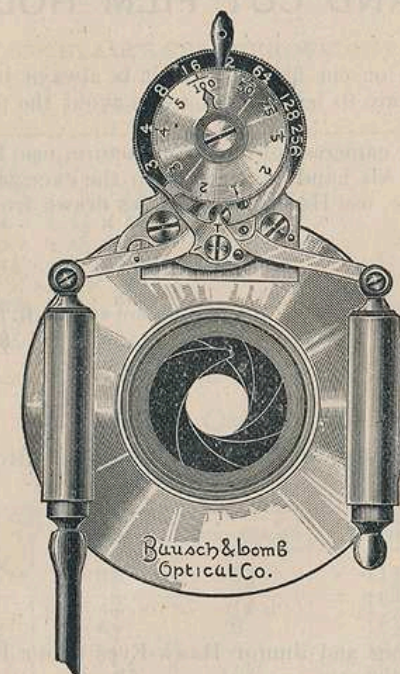
Cat. No.	No.	Size of Plate.	Diameter of Lens.	Diameter of Flange.	Back Focus.	Price.
1575	1	4 × 5	1½ in.	2½ in.	6 in.	\$12 00
1576	2	5 × 7	1½ "	2½ "	8 "	20 00

## TAYLOR &amp; HOBSON RAPID RECTILINEAR LENS.

These lenses are imported in cells and by so doing we are enabled to furnish them to our customers at a very moderate price. They are fitted with similar mount as the Blair R. R., and adapted especially for use in the Hawk-Eye Camera, the diameter and focal length are the same as the above mentioned lens.

4 × 5, fitted with revolving diaphragm	.	.	.	.	.	\$15 00
" " " iris	.	.	.	.	.	25 00

## DIAPHRAGM SHUTTER.



No shutter has ever been introduced the advantages of which have been so quickly appreciated and which from its first appearance has been conceded to excel all others. It has stood the test for years, and is without a rival.

The construction enables us to adopt lenses to them under the exact original conditions and truly centered, a fact of the greatest importance, as there is not the slightest depreciation in any of the good qualities which a lens may possess.

All the parts to be operated are at the front and easy of access. The upper lever sets the shutter without making an exposure; the lower sets for time or instantaneous exposure; the larger black disk sets the size of opening, the smaller for time exposure, varying from 3 to 1-100 seconds. The shutter is very compact and well balanced in its operation, so that there is no jar, even at its quickest speed, while making an exposure.

## PRICE LIST.

4 × 5	.	.	.	\$14 50	6½ × 8½	.	.	.	\$16 50
5 × 8	.	.	.	15 50	8 × 10	.	.	.	18 00

Extra for Aluminum, \$5 00



## PLATE AND CUT FILM HOLDERS.

In ordering plate or cut film holders it is always best to mention the camera in which they are to be used, so as to avoid the possibility of delay or error.

All tripod or view cameras, of our manufacture, use Holders with slides drawn from the end. All hand cameras, with the exception of the "400" and Century Hawk-Eye, use Holders with slides drawn from the side.

### PRICE LIST.

Size.	With Pasteboard Slides.	With H. R. Slides.	Mahog. with H. R. Slides.
3 $\frac{1}{4}$ × 4 $\frac{1}{4}$ . . . . .	\$1 00	\$1 20	\$1 35
4 × 5 . . . . .	1 00	1 20	1 40
4 $\frac{1}{4}$ × 5 $\frac{1}{2}$ . . . . .	1 00	1 20	1 40
4 $\frac{1}{4}$ × 6 $\frac{1}{2}$ . . . . .	1 25	1 50	1 80
5 × 7 . . . . .	1 25	1 50	1 80
5 × 8 . . . . .	1 35	1 60	1 90
6 $\frac{1}{2}$ × 8 $\frac{1}{2}$ . . . . .	1 60	2 00	2 30
8 × 10 . . . . .	1 85	2 40	2 80
10 × 12 . . . . .		3 50	4 50
11 × 14 . . . . .		4 00	5 00

The Special Folding and Junior Hawk-Eyes take a Holder of different design from the other cameras.

### PRICE LIST.

3 $\frac{1}{2}$ × 3 $\frac{1}{2}$ . . . . .	\$1 00
4 × 5 . . . . .	1 00
5 × 7 . . . . .	1 25

### PRICE LIST OF SLIDES FOR HOLDERS.

Size.	Pasteboard.	Pol. H. R.	Size.	Pasteboard.	Pol. H. R.
3 $\frac{1}{2}$ × 3 $\frac{1}{2}$ . . . . .	\$0 10	\$0 15	5 × 8 . . . . .	\$0 10	\$0 25
3 $\frac{1}{4}$ × 4 $\frac{1}{4}$ . . . . .	10	15	6 $\frac{1}{2}$ × 8 $\frac{1}{2}$ . . . . .	15	30
4 × 5 . . . . .	10	20	8 × 10 . . . . .	15	40
4 $\frac{1}{4}$ × 5 $\frac{1}{2}$ . . . . .	10	20	10 × 12 . . . . .	20	50
4 $\frac{1}{4}$ × 6 $\frac{1}{2}$ . . . . .	10	25	11 × 14 . . . . .	25	55
5 × 7 . . . . .	10	25			

## INSIDE KITS.

To enable the operator who has a large camera to use a plate smaller than the size of holders. They are made of thoroughly seasoned stock and very light.

### PRICE LIST.—KITS FOR BLAIR'S FEATHER-WEIGHT PLATE-HOLDERS.

Size of Plate-Holder.	Size of Opening in Kit.	Price.
4 × 5	3 $\frac{1}{4}$ × 4 $\frac{1}{4}$ , 3 $\frac{1}{4}$ × 4 . . . . .	\$0 25
4 $\frac{1}{4}$ × 5 $\frac{1}{2}$	3 $\frac{1}{4}$ × 4 $\frac{1}{4}$ , 3 $\frac{1}{4}$ × 4 . . . . .	0 25
4 $\frac{1}{4}$ × 6 $\frac{1}{2}$	3 $\frac{1}{4}$ × 4 $\frac{1}{4}$ . . . . .	0 30
5 × 7	3 $\frac{1}{4}$ × 4 $\frac{1}{4}$ , 4 × 5, 4 $\frac{1}{4}$ × 5 $\frac{1}{2}$ . . . . .	0 30
5 × 8	3 $\frac{1}{4}$ × 4 $\frac{1}{4}$ , 4 × 5, 4 $\frac{1}{4}$ × 5 $\frac{1}{2}$ , 4 $\frac{1}{4}$ × 6 $\frac{1}{2}$ . . . . .	0 30
6 $\frac{1}{2}$ × 8 $\frac{1}{2}$	4 $\frac{1}{4}$ × 5 $\frac{1}{2}$ , 4 $\frac{1}{4}$ × 6 $\frac{1}{2}$ , 5 × 7, 5 × 8 . . . . .	0 40
8 × 10	5 × 7, 5 × 8, 6 $\frac{1}{2}$ × 8 $\frac{1}{2}$ . . . . .	0 45
10 × 12	6 $\frac{1}{2}$ × 8 $\frac{1}{2}$ , 8 × 10 . . . . .	0 75
11 × 14	8 × 10, 10 × 12 . . . . .	0 90
14 × 17	8 × 10, 10 × 12, 11 × 14 . . . . .	1 25

## BELLOWS.

### PRICE LIST OF CONE LEATHER BELLOWS FOR REVERSIBLE BACK CAMERAS.

No.	Size of Camera.	Front Frame	Rear Frame	Length.	Price.
No. 1500 B.	4 × 5	3 $\frac{1}{2}$	5 $\frac{3}{4}$	11 $\frac{1}{4}$	\$3 40
" 1502 B.	5 × 7	4 $\frac{3}{4}$	7 $\frac{3}{4}$	16 $\frac{1}{4}$	4 50
" 1503 B.	5 × 8	6 $\frac{1}{4}$	9	18 $\frac{1}{8}$	5 00
" 1504 B.	6 $\frac{1}{2}$ × 8 $\frac{1}{2}$	6 $\frac{1}{4}$	9	18 $\frac{1}{4}$	5 00
" 1505 B.	8 × 10	8 × 6 $\frac{3}{8}$	10 $\frac{1}{8}$	20 $\frac{3}{8}$	5 50

### PRICE LIST OF STRAIGHT BELLOWS.

No.	Size of Camera.	Front Frame.	Length.	Price.
No. 5000 B.	4 × 5	5 $\frac{5}{8}$ × 5 $\frac{1}{4}$	9 $\frac{5}{8}$	\$2 25
" 5001 B.	5 × 7	7 $\frac{13}{16}$ × 6 $\frac{1}{8}$	11 $\frac{1}{8}$	3 40
" 5002 B.	5 × 8	8 $\frac{13}{16}$ × 6 $\frac{3}{16}$	12	3 40

These are for our regular size of best leather bellows. Special sizes to order, and estimates furnished.

Rubber Bellows made only to order, at 33 $\frac{1}{3}$ % off above list.

### Directions for Ordering Special Bellows.

Cone Bellows:—Give outside dimensions of front and rear frames, length of bellows when extended.

Straight Bellows:—Give outside dimension of frames, length of bellows when extended, and depth of fold.

The price of first Special Bellows is always made to cover the cost of making pattern. The cost of those for Cone Bellows is \$7.00. Straight Bellows from \$2.00 to \$5.00.



## TRIPODS.

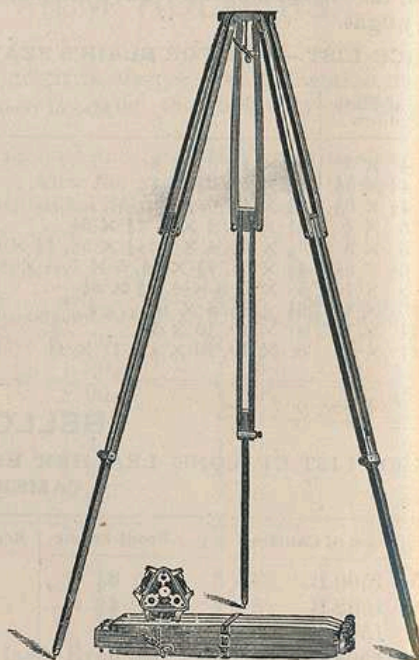
THE COMPACT  
ADJUSTABLE TRIPOD.

The great popularity of this Tripod speaks volumes for the merits of its design.

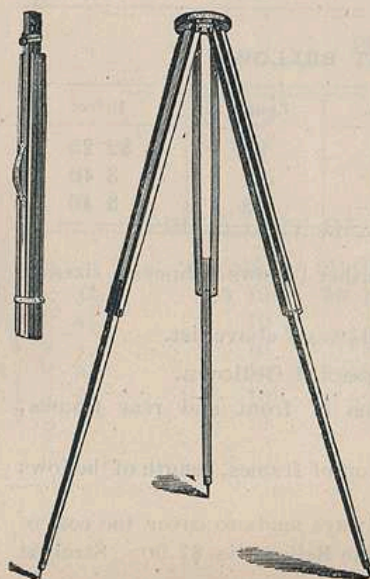
Its construction is similar to the well known Combination, being really the smaller sizes of this form. It is made in more compact form, and combines the rigidity of the folding tripod, folding shorter than the ordinary style.

Its merits are so readily seen by referring to cut, that we forego a lengthy description. It is made of best material, with cloth-covered top.

Cat. No. 3000A.	Size No. 00	\$3 50
" 3001A.	" 0	4 00
" 3002A.	" 1	4 50



Nos. 3000A-3002A, OPEN AND FOLDED.



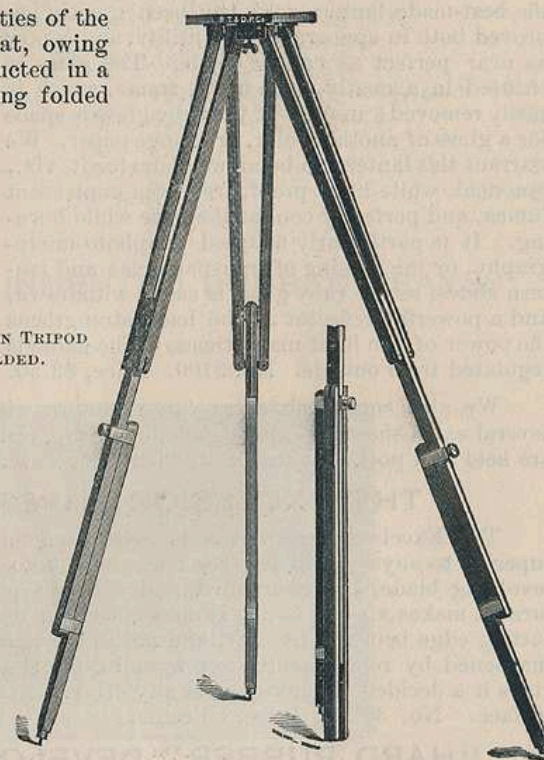
## ENGLISH FOLDING TRIPOD.

This has proven one of the most substantial forms of tripod yet introduced; it combines rigidity, ease of adjustment, and compactness when folded.

Made of the best quality straight-grained maple, price . . . \$1.25

## THE BLAIR COMBINATION TRIPOD.

Possessing all the qualities of the Compact Tripod, except that, owing to the size, it is not constructed in a form that will admit of being folded so compactly.

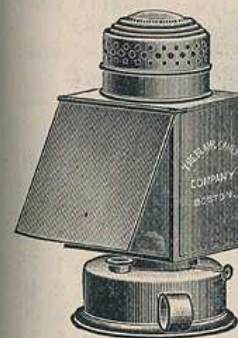
No. 3001-3002. BLAIR COMBINATION TRIPOD  
AND ADDITIONAL LEG FOLDED.

Cat. No. 3001	Size No. 2	intended for 11 x 14 Camera,	\$3 00
" 3002	" 3	larger Cameras,	4 00

## THE JUNIOR LANTERN.

The Junior Lantern of which the cut is a very good representation, is by far the most convenient, moderate priced lantern on the market, and is becoming very popular with amateurs.

It requires no more care and is as easily manipulated as an ordinary hand lamp. The flame is regulated from the outside, and gives a clear steady light, perfectly safe and efficient for the dark-room. The cover lowers from the top remaining in any position in which it is placed and serves both as a reflector and also as a shade for the eyes. When closed the lantern is perfectly dark, allowing the ruby glass to be removed and replaced by one of another color.

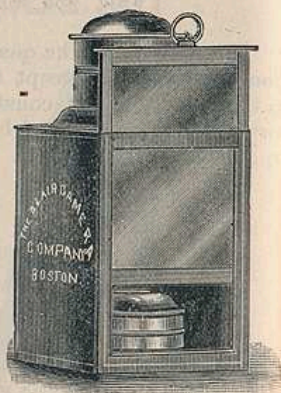


Size, 9½ x 4½ inches; price, \$1 00



### THE TRIUMPH RUBY LANTERN.

This Lantern, though previously considered the best-made lantern sold, has been greatly improved both in appearance and utility, and is now as near perfect as can be made. The glass is encased in a neatly made metal frame, which is easily removed; in front of the ruby glass is space for a glass of another color, or orange paper. We warrant this lantern to be all we claim for it, viz., practical, white-light proof, free from unpleasant fumes, and perfectly cool at the base while burning. It is particularly adapted for photo-micrography, or the making of transparencies and lantern slides, as the ruby glass is easily withdrawn, and a powerful reflector at the back strengthens the power of the light many times. The flame is regulated from outside. No. 3100. Price, \$2.50.



NO. 3100.

We also supply an extra large lantern with light on three sides, and several extra sheets of glass, including ruby, orange, green and opal, which are held in a pocket at the back, when not in use. No. 3101. Price, \$6.00.

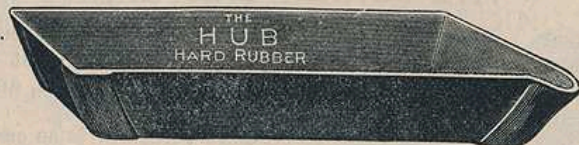
### THE EXCELSIOR PAPER CUTTER.

The Excelsior paper-cutter is better and more rapid than a knife, and superior to anything in use for trimming photo. prints. Having a circular revolving blade, extra hardened, and with sharp chisel edge which will not turn, it makes a clean cut. It does not pinch off the paper. The bevelled cutting edge being at the side, and not in the centre, the knife may easily be sharpened by removing the screw and rubbing it flat on an oil-stone, which gives it a decided advantage over any other. In cutting, always use a glass surface. No. 3028. Price, 50 cents.

### "HARD RUBBER" DEVELOPING TRAYS.

The "Hard Rubber" Developing Trays are made of the best quality of hard rubber, are deeper (as will be seen by measurements) than the ordinary shallow rubber tray, and with bound corners, and a lip for pouring.

They are a superior article, and should be seen by every photographer.



Size,	For Plates	1 1/2 in. deep,	\$0
4 1/4 x 5 1/2.	3 1/4 x 4 1/4, and 4 x 5.	1 1/2	50
" 5 1/2 x 8 1/2.	" 5 x 8.	1 3/4	75
" 7 x 9.	" 6 1/2 x 8 1/2	1 3/4	88
" 8 1/2 x 10 1/2.	" 8 x 10.	1 3/4	1 15
" 11 x 13.	" 10 x 12.	2	1 75
" 12 x 15.	" 11 x 14.	2 1/4	2 40
" 15 x 18.	" 14 x 17.	2 1/4	4 00
" 19 x 23.	" 18 x 22.	2 1/4	5 75
" 21 x 25.	" 20 x 24.	2 1/4	7 50

These prices are subject to change without notice.

### BLACK JAPANNED DEVELOPING TRAYS.

Made of selected metal for Dry-Plate photography.

#### PRICE LIST.

Size,	For plates	3 1/4 x 4 1/4, 4 x 5, and 4 1/4 x 5 1/2, each	\$0
4 1/4 x 5 1/2.	" 4 1/4 x 6 1/2, 5 x 7,	" 5 x 8,	20
" 5 1/2 x 8 1/2.	" 6 1/2 x 8 1/2,	"	25
" 7 x 9.	" 8 x 10,	"	30
" 8 1/2 x 10 1/2.	" 10 x 12,	"	35
" 11 x 13.	"	"	40

### HUB BRAND "INDENTED RUBBER TRAYS."

Patented, May 24, 1877.



EASILY KEPT CLEAN.

These trays are so constructed as to allow the plate to lie flat on the bottom, yet have all the advantages of the old developer-wasteing form with ridges.

The indentations permit the finger to be inserted freely under the plate without any danger of scratching.

They are made to waste the least amount of developer possible, and are acknowledged to be the best tray in the market.

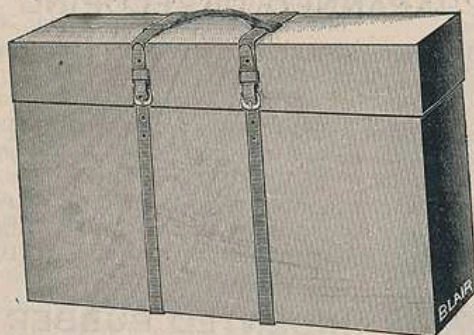
#### PRICE LIST.

Size,	For plates	3 1/4 x 4 1/4, 4 x 5, and 4 1/4 x 5 1/2, 3/4 in. deep,	\$0
4 1/4 x 5 1/2.	" 4 1/4 x 6 1/2, 5 x 7,	" 5 x 8	28
" 5 1/2 x 8 1/2.	" 6 1/2 x 8 1/2,	"	56
" 7 x 9.	" 8 x 10 1/2,	"	72
" 8 1/2 x 10 1/2.	" 10 x 12,	"	08
" 11 x 13.	"	"	56

These prices are subject to change without notice. Look for the stamp "Hub Brand" on the bottom.



## CARRYING CASES.



## PRICE LIST.

No. 1530 C.	For $6\frac{1}{2} \times 8\frac{1}{2}$	Folding Hawk-Eye (Leather)		\$4 00
" 1527 C.	" $5 \times 7$	" " No. 1.		3 00
" 1528 C.	" " "	" " 2.		3 00
" 1529 C.	" " "	" " 3.		3 00
" " "	" $4 \times 5$	" " "		2 00
" 1536 C.	" $5 \times 7$	Kamaret		3 00
" 1535 C.	" $4 \times 5$	" " "		2 50
" 1538 C.	" $5 \times 7$	Attachment and six Holders		3 50
" 1537 C.	" $4 \times 5$	" " "		2 50
" 1526 C.	" " "	Hawk-Eye		2 50
" " "	" $3\frac{1}{2} \times 3\frac{1}{2}$	" Junior		1 50

Other sizes made to order, and prices given on application.

## CARRYING CASES.

No. 1500 C.	For $4 \times 5$	Reversible Back Cameras		\$2 25
" 1506 C.	" $5 \times 7$	" " "		2 50
" 1507 C.	" $6\frac{1}{2} \times 8\frac{1}{2}$	" " "		2 75
" 1508 C.	" $8 \times 10$	" " "		3 25
" 1407 A.C.	" $4 \times 5$	English Compact Cameras		2 75
" 1406 C.	" $5 \times 7$	" " "		3 00
" 1408 C.	" $6\frac{1}{2} \times 8\frac{1}{2}$	" " "		3 50
" 1409 C.	" $8 \times 10$	" " "		4 00
" 1410 C.	" $10 \times 12$	" " "		4 50
" 1541 C.	" $6\frac{1}{2} \times 8\frac{1}{2}$	Extension		2 25
" 1542 C.	" $8 \times 10$	" " "		2 50
" 1546 C.	" $10 \times 12$	" " "		2 75
" 1548 C.	" $11 \times 14$	" " "		3 25
" 1524 C.	" $4 \times 5$	Hawk-Eye, Stiff		2 25
" 1524 C.S.	" " "	" Soft		2 25
No. 3000 A.C.	Size 00	Compact Tripod		1 50
" 3001 A.C.	" 0	" " "		1 50

Special sizes and shapes made to order and prices given upon application.

## PRICE LISTS OF SPECIAL PARTS OF CAMERAS.

In ordering special parts it is always a safe and simple plan, when the shape will admit, to lay the part of which a duplicate is desired on a paper, and outline the size, etc. In fact, this applies with equal effect in ordering Plate-Holders, etc.

## REVERSIBLE ADJUSTERS.

No. 1514.	For $4\frac{1}{4} \times 5\frac{1}{2}$	Camera, Reversible Back		\$5 00
" 1515.	" $5 \times 7$	" " "		5 00
" 1516.	" $6\frac{1}{2} \times 8\frac{1}{2}$	" " "		6 00
" 1517.	" $8 \times 10$	" " "		7 00

Special sizes 10% to 20% extra.

## IMPROVED REVERSIBLE BACK CAMERA LENS BOARD.

No. 1501-5.	Lens (or Front) Boards for $4\frac{1}{4} \times 5\frac{1}{2}$		\$0 35
" 1502-5.	" " " $5 \times 7$		45
" 1504-5.	" " " $6\frac{1}{2} \times 8\frac{1}{2}$		50
" 1505-5.	" " " $8 \times 10$		55

Lens Boards for Improved R. B., Champion, and Cincinnati Cameras are interchangeable. A  $4 \times 5$  lens board for any of above Cameras will fit a  $5 \times 7$  Compact; also a  $5 \times 7$  lens board of the former will fit a  $6\frac{1}{2} \times 8\frac{1}{2}$  Compact, and a  $6\frac{1}{2} \times 8\frac{1}{2}$  will fit an  $8 \times 10$  Compact Camera.

## COMPACT CAMERA LENS BOARDS.

No. 1406-5.	Lens (or Front) Boards $5 \times 7$		\$0 35
" 1407-5.	" " " $5 \times 8$		
" 1408-5.	" " " $6\frac{1}{2} \times 8\frac{1}{2}$		45
" 1409-5.	" " " $8 \times 10$		50
" 1410-5.	" " " $10 \times 12$		55

$5 \times 7$  and  $6\frac{1}{2} \times 8\frac{1}{2}$  Hawk-Eye same as Compact.

## RECESS OR EXTENSION FRONTS.

These are used as a means in decreasing the distance between the ground glass and the front of a Camera for an exceedingly short-focus lens, and can be reversed to increase the focussing capacity in using one of a very long focus or when copying.

## PRICE LIST

## FOR REVERSIBLE BACK CAMERAS.

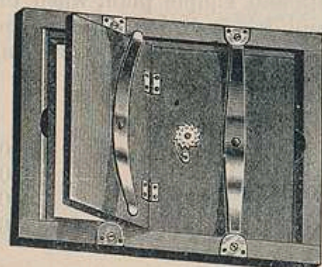
No.	Size of Camera.	Price.
3046	$4\frac{1}{4} \times 5\frac{1}{2}$	\$1 50
3047	$5 \times 7$	
3048	$6\frac{1}{2} \times 8\frac{1}{2}$	
3049	$8 \times 10$	2 00
3050	$11 \times 14$	

The longest extension front made for this style of Camera, except to order, is 5 inches, and the shortest  $3\frac{1}{2}$  inches; the latter will reverse into and allow the Camera to close.



## IMPROVED PRINTING FRAMES.

PATENTED.



This indispensable article has been greatly improved within the past few months and is confidently recommended as the best printing frame in the market in finish, in design and in utility.

They are all fitted with our spring registering tally, which is acknowledged without equal.

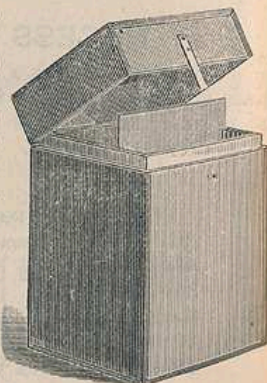
Cat. No.	Size.	Flat.	Deep.	Cat. No.	Size.	Flat.	Deep.
3010.	3½ × 4½	\$ 36	....	3019.	11 × 14	\$1 80	\$2 40
3011.	4 × 5	38	....	3010 A.	14 × 17	2 40	3 00
3012.	4½ × 5½	40	....	3011 A.	16 × 20	3 00	4 20
3013.	4½ × 6½	42	....	3012 A.	17 × 20	3 00	4 50
3014.	5 × 7	50	....	3013 A.	18 × 22	4 00	5 00
3015.	5 × 8	52	....	3014 A.	20 × 24	5 00	5 25
3016.	6½ × 8½	60	\$1 20	3015 A.	24 × 30	....	8 80
3017.	8 × 10	75	1 40	3016 A.	35 × 45	....	15 00
3018.	10 × 12	1 00	1 60	3017 A.	30 × 60	....	20 00

When backs opening lengthways are required, add 10% additional to price list.

Spring Registering Tallys will be supplied separately at 10 cents each, complete with spring and screws.

## NEGATIVE BOXES.

Cat. No. 2048.	Holding 24 1-9 plates	\$0 50
" 2049.	" 24 1-6 "	55
" 2050.	" 24 3½ × 4½ plates,	60
" 2051.	" 24 4 × 5 "	65
" 2052.	" 24 4½ × 6½ "	70
" 2053.	" 24 4 × 8 "	80
" 2054.	" 24 5 × 7 "	85
" 2055.	" 24 5 × 8 "	85
" 2056.	" 24 6½ × 8½ "	95
" 2057.	" 24 8 × 10 "	1 00
" 2058.	" 24 10 × 12 "	2 00
" 2059.	" 12 11 × 14 "	3 00
" 2060.	" 12 14 × 17 "	3 50
" 2061.	" 12 17 × 20 "	4 50
" 2062.	" 12 20 × 24 "	5 50



Above, blacked inside and fitted with lock and key. \$1 00 extra. Special sizes to hold any number of plates required, made to order.

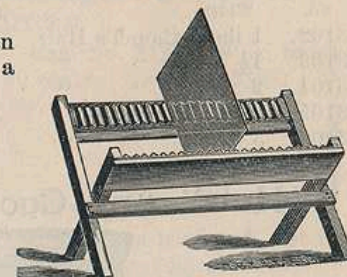
## NEGATIVE DRYING RACKS.

For holding 24 plates while drying; when not in use it can be folded and hung on a nail.

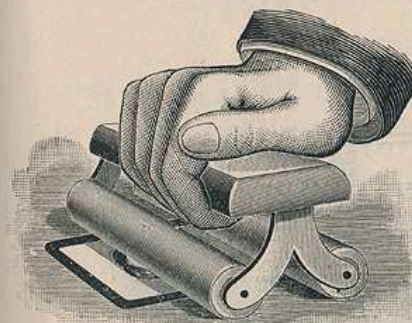
Cat. No. 2045. Price 40c. each.

Same as above, but larger size.

Cat. No. 2046. Price 50c. each.



## THE SUCCESS PRINT MOUNTER.



The accompanying illustration so fully describes it that but little need be said of its merits further than the fact that every photographer should have one.

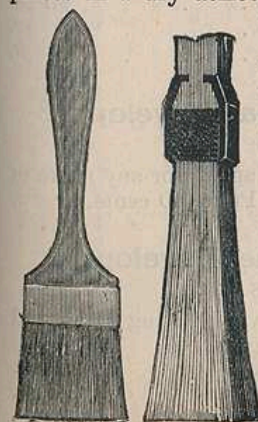
Cat. No. 3182. 6-inch . \$1 00  
" 3183. 12 " . 1 50

## Photographers' Brushes, Bound and Set in Metal and Hard Rubber.

These brushes are practically indestructible so far as being affected in any way by the solution in which they may be used. They will not drop to pieces in a dry atmosphere, and are not attacked by rust rot when kept in damp places.

Their Construction involves a new principle. No metal whatever of a corrosive nature is used. The bristles are firmly held together by being first dipped in a composition of soft rubber; the handle is then placed close up to the butt of bristles (not wedged in, as is usual), and around the whole is wound a strip of rubber and metal wire combined, covering the butt of the bristles and filling a groove running around the bristle end of handle. (See sectional illustration.)

The portion of the brush covered with rubber is then vulcanized or hardened, the result being a solid rubber head, in which the handle and bristles are so firmly held that it is impossible for them to become loose or separated. It is self-evident that this method of constructing brushes is far superior to the old modes.





## PRICE LIST.

No.	Width,	Each.	No.	Width,	Each.
3102.	1 inch, Camel's Hair	\$0 38	3107.	1 inch, Bristle Paste	\$0 20
3103.	1½ " " " "	57	3108.	1½ " " " "	25
3104.	2 " " " "	75	3109.	2 " " " "	35
3105.	2½ " " " "	95	3110.	2½ " " " "	45
3106.	3 " " " "	1 40	3111.	3 " " " "	50

**"Hub" Anti-Cockling Mounting Solution.**

For mounting Photographic Prints without curling when dry. Prints mounted with this Solution will remain perfectly flat when dry, will not cockle, bend, or twist, and do not require burnishing.

Cat. No. 3112.	Price, half pint,	\$0 50
" 3113.	" pint,	85
" 3114.	" quart	1 50

**The "Hub" Concentrated Universal Developer.**  
IN TWO SOLUTIONS.

Cat. Nos. 3120-3121. 8 oz. in each bottle. Adapted for any make of Dry Plates. The most economical developer in use. Price, 60 cents.

**"Hub" Concentrated Hydrochinone Developer.**  
IN ONE AND TWO SOLUTIONS.

For Transparencies and Photo-Engravers' Negative. Giving clear and transparent lines and shadows, and with strong high lights.

Cat. No. 3122. Price, one solution, 8 oz. bottles, 30 cents. Cat. No. 3123. 16 oz. bottles, 60 cents. Two solutions, put up in two 8 oz. bottles, 60 cents.

**The "Hub" Concentrated Eikonogen Developer.**  
ONE AND TWO SOLUTION.

Adapted for any make of Dry Plates. Cat. No. 3124. 8 oz. bottles, 30 cents. Cat. No. 3125. 16 oz. bottles, 60 cents. Cat. No. 3126. Two solutions, put up in two 8 oz. bottles, 60 cents.

**Metol Developer.**

This agent for developing is the latest, and has been tried and tested by hundreds of professional and amateurs, as it gives excellent detail and density, and can be controlled so as to give the best results; it is especially recommended for films and plates as it causes no developing fog.

Price, ½ pint, 30 cents; pints, 60 cents.

**"Hub Brand" Concentrated Toning Solution.**

By which the manipulator can obtain any color from a sepia to an intense black and white, if so desired.

The bath can be used indefinitely by simply adding ½ ounce more of stock before using. Try it, you will use no other.

Cat. No. 3128. ½ pint, 50 cents. Cat. No. 3129. pint, \$1.00.

**GLASS DRY PLATES AND CUT FILMS.****GLASS DRY PLATES.**

Size.	Per Doz.
3¼ × 4¼	\$0 45
4 × 5	65
4¼ × 5½	75
4¼ × 6½	90
4¼ × 6½	95
5 × 7	1 10
5 × 8	1 25
6½ × 8½	1 65
7 × 9	1 90
7 × 10	2 10
8 × 10	2 40
10 × 12	3 80
11 × 14	5 00
14 × 17	9 00
16 × 20	12 50
17 × 20	13 00
18 × 22	15 50
20 × 24	18 50

**CELLULOID NEGATIVE FILMS.**

Size.	Per Doz.
3¼ × 4¼	\$0 55
4 × 5	80
4¼ × 5½	90
4¼ × 6½	1 10
4¼ × 6½	1 20
5 × 7	1 40
5 × 8	1 55
6½ × 8½	2 10
8 × 10	3 00
10 × 12	4 75
11 × 14	6 25

Lantern Slide Plates on specially selected glass, per doz, 65 cents.



## BLAIR'S FILM.

Blair's Film has a delicate, grain surface resembling fine ground-glass on the coated side, and can be allowed to remain for an indefinite period in the developer, the fixing bath or the soaking solution and never frill. Thus the development of an under-exposed film need never be checked until it is satisfactory in point of detail and density. The tendency to curl is much less than any other film, and the ground-glass surface but slightly affects the transparency of the film, and greatly enhances the printing qualities.

Blair's Film is for use in the former style of Roll Holders, also the Kamaret and all film cameras of other manufacture than ours. It is furnished in rolls of 25, 50, 75 and 100 exposures instead of odd lengths, and the price per exposure is practically the same as that of other manufacture. The emulsion is extremely rapid.

## PRICE LIST.

CAT. NO.	WIDTH.	LENGTH.	EQUAL TO FOLLOWING EXPOSURES.	PRICE.
3150.	3 $\frac{1}{4}$ in.	108 in.	25 3 $\frac{1}{4}$ × 4 $\frac{1}{4}$ . . . . .	\$1 20
3151.	3 $\frac{1}{4}$ "	215 "	50 3 $\frac{1}{4}$ × 4 $\frac{1}{4}$ . . . . .	2 40
3152.	3 $\frac{3}{4}$ "	90 "	25 3 $\frac{3}{4}$ × 3 $\frac{3}{4}$ . . . . .	1 10
3153.	3 $\frac{3}{4}$ "	180 "	50 3 $\frac{3}{4}$ × 3 $\frac{3}{4}$ . . . . .	2 20
3154.	4 "	130 "	25 4 × 5 . . . . .	1 65
3155.	4 "	255 "	50 4 × 5 . . . . .	3 30
3156.	4 "	380 "	75 4 × 5 . . . . .	5 00
3157.	4 "	505 "	100 4 × 5 . . . . .	6 60
3158.	4 $\frac{1}{4}$ "	135 "	{ 40 4 $\frac{1}{4}$ × 3 $\frac{1}{4}$ or 25 4 $\frac{1}{4}$ × 5 or 22 4 $\frac{1}{4}$ × 5 $\frac{1}{2}$ or 20 4 $\frac{1}{4}$ × 6 $\frac{1}{2}$ . . . . .	1 65
3159.	4 $\frac{1}{4}$ "	265 "	{ 80 4 $\frac{1}{4}$ × 3 $\frac{1}{4}$ or 50 4 $\frac{1}{4}$ × 5 or 48 4 $\frac{1}{4}$ × 5 $\frac{1}{2}$ or 40 4 $\frac{1}{4}$ × 6 $\frac{1}{2}$ . . . . .	3 30
5160.	4 $\frac{1}{4}$ "	505 "	100 4 $\frac{1}{4}$ × 5 . . . . .	6 60
5161.	5 "	180 "	44 5 × 4 or 25 5 × 7 or 22 5 × 8	3 00
3162.	5 "	355 "	88 5 × 4 or 50 5 × 7 or 44 5 × 8	6 00
3163.	5 $\frac{1}{4}$ "	105 "	25 5 $\frac{1}{4}$ × 4 . . . . .	1 65
3164.	5 $\frac{1}{4}$ "	180 "	25 5 $\frac{1}{4}$ × 7 or 43 5 $\frac{1}{4}$ × 4 . . . . .	3 00
3165.	5 $\frac{1}{4}$ "	205 "	50 5 $\frac{1}{4}$ × 4 . . . . .	3 30
3166.	5 $\frac{1}{4}$ "	355 "	50 5 $\frac{1}{4}$ × 7 . . . . .	6 00
3167.	6 $\frac{1}{2}$ "	218 "	25 6 $\frac{1}{2}$ × 8 $\frac{1}{2}$ . . . . .	4 40
3168.	6 $\frac{1}{2}$ "	435 "	50 6 $\frac{1}{2}$ × 8 $\frac{1}{2}$ . . . . .	8 80
3169.	8 "	255 "	25 8 × 10 . . . . .	6 60
3170.	8 "	505 "	50 8 × 10 . . . . .	13 00
3171.	8 $\frac{1}{2}$ "	167 "	25 8 $\frac{1}{2}$ × 6 $\frac{1}{2}$ . . . . .	4 40
3172.	8 $\frac{1}{2}$ "	330 "	50 8 $\frac{1}{2}$ × 6 $\frac{1}{2}$ . . . . .	8 80

## SUNLIGHT FILM.

The Sunlight Film is of the same quality as the "Blair's" having a ground-glass surface, and the emulsion extremely rapid; it is manufactured however, expressly for the Baby Hawk-Eye, Hawk-Eye, Jr., and New Model Roll Holders, and can be safely adjusted for use in broad daylight, as well as the dark-room. This film has paper attached to the ends and is wound in such a manner that it is impossible for the rays of light to reach the sensitive surface.

The mistakes of cutting up the film for development which has frequently occurred on account of small perforations made by the marker and at many times failing to work at all, has been entirely obviated by our new method of marking the film during the process of manufacture.

## PRICE LIST.

Width 2	12 —	2 × 2 $\frac{1}{2}$ —	40
" 3 $\frac{3}{4}$	12 —	3 $\frac{1}{2}$ × 3 $\frac{1}{2}$ —	60
" 3 $\frac{3}{4}$	25 —	3 $\frac{1}{2}$ × 3 $\frac{1}{2}$ —	1 20
" 4	12 —	4 × 5 —	85
" 4	25 —	4 × 5 —	1 65
" 4	50 —	4 × 5 —	3 30
" 5	12 —	5 × 7 —	1 60
" 5	25 —	5 × 7 —	3 00
" 5	50 —	5 × 7 —	6 00

Among the many letters received by us testifying to the satisfactory results obtained with our Film, is one from the Edison M'f'g. Co., of Orange, N.J., who are using BLAIR'S FILM exclusively in their most marvellous invention, "THE KINETOSCOPE."

They write us:—

"We take great pleasure in writing at this time to inform you that the quality of the Film which you have supplied us for taking pictures in connection with the Edison Kinetoscope, has been in every way very satisfactory for the particular purpose in which same has been used.

Yours very truly,

EDISON M'F'G. CO.,

W. E. GILMORE, Mgr.

ORANGE, N.J., Nov. 6, 1895."

What the Sec'y and Treas. of The Connecticut Associated Press says:—

"For four years past, in the lights and shades of two continents, I have used your Blair's Film, and with universal success.

More than two thousand brilliant negatives in my possession testify that they are the equal of plates, and in many ways preferable to them. In the glare of the tropics, at sea, or in cold latitudes I have never had a roll fail me. The result is a mass of perfect negatives the admiration of all experts. I would not travel without a good camera and Blair Film.

It is a pleasure to forward you, therefore, this statement of my experience.

Faithfully,

F. W. HINMAN.

NEW HAVEN, CONN., Jan. 17, 1896."



## PRINTING PAPER.

## ARISTOTYPE, BLUE LABEL.

A highly sensitized collodion paper, of great permanency, producing fine results from delicate, soft negatives. Manipulated in separate toning and fixing bath.

## PRICE LIST.

2 x 2½	(two dozen in package,) for	Baby Hawk-Eye,		\$0 15
3½ x 3½	one " " "	Hawk-Eye, Jr.,		20
4 x 5	" " " "	" " " "		25
5 x 7	" " " "	" " " "		40
5 x 8	" " " "	" " " "		45
6½ x 8½	" " " "	" " " "		70
8 x 10	" " " "	" " " "		90

## FRENCH SATIN, JUNIOR.

## The New Blue Print Paper.

This paper possesses peculiar and characteristic properties found in no other brand, and owing to a new process of manufacture it will give prints of unusual brilliancy.

## PRICE LIST.

4 x 5	25 sheets, per package,		\$0 20
5 x 7	" " " "		35
5 x 8	" " " "		40
6½ x 8½	" " " "		56
8 x 10	" " " "		68

## THE "HUB" MAGNESIUM FLASH LIGHT POWDER

The custom of making photographs at evening parties, weddings, club dinners, etc., has now become very popular. A picture made on such occasions is a souvenir as well as a novelty and highly valued by all. The "Hub" Magnesium Powder enables us to make exposures at night without the use of any flash lamps or other apparatus, and can be supplied at a price within the reach of all. There is absolutely no danger of explosions, and the method of using the powder is such that the operator can join the group if desired.

Package contains sufficient for twenty exposures, each in separate box with directions for use.

Price, per box 50 cents.

Pure Magnesium, 50 cents per ounce.

## OUTFITS FOR DEVELOPING AND PRINTING.

To save trouble in selecting the articles needed for Developing and Printing, we have prepared outfits containing only those necessary for the processes, and supply them at prices considerably below the cost of the same items if bought separately. We guarantee everything of best quality.

Cat. No.	Size.	Price of Developing Outfit.	Price of Printing Outfit.
3190.	For 4 x 5	\$3 00	\$3 50
3191.	" 5 x 7	5 50	4 55
3192.	" 6½ x 8½	5 75	6 25
3193.	" 8 x 10	6 25	8 25

The Developing Outfit includes, Lantern, Two Trays, Developer, Hypo-Sulphite Soda, Alum, Graduate, Camel's Hair Brush.

The Printing Outfit includes, Frame, Paper, Two Trays, Toning Solution, Glass Form, Excelsior Trimmer, Paste, Mounts, Litmus Paper, Brush.

## PRICE LIST OF DEVELOPING AND PRINTING.

	DEVELOP'G ONLY	DEVELOP'G AND PRINT'G.	PRINTING ONLY.	MOUNTING EXTRA.
Film, in Rolls, 2 x 2½ exposure	\$0.03	\$0.06	\$0.04	\$0.01
" " 3½ round, or 3½ x 4½ square exposure	.06	.11	.08	.02
" " 4 x 5 exposure	.08	.13	.08	.02
" " 5 x 7 or 5 x 8 exposure	.10	.17	.10	.03
Glass Plates or Cut Films, 4 x 5, each	.08	.13	.08	.02
" " " " 5 x 7 or 5 x 8, each	.10	.17	.10	.03
Glass Plates, 6½ x 8½, each	.13	.22	.15	.04
" " 8 x 10, each	.15	.30	.18	.05
" " 10 x 12, each	.20	.35	.20	.06

Above prices for Mounting include gold bevel mounts, light or dark colors, and unless otherwise specified we use our judgment. Unless otherwise ordered prints will be made on our Aristotype Paper, giving a glaze finish and superior tones.

Retouching and time spent in improving negatives when ordered will be charged extra. Vignetted prints 20 cents extra for each negative.

Price for Printing only includes the trimming of print and burnishing, ready for mounting in album. Mounting with glue or anti-cockling solution in album, without cockling or bending, 8 cents per print for any size up to 8 x 10 not including mounts. Prices for special mounting and printing sent on application.

## BROMIDE ENLARGING.

SIZE.	UNMOUNTED.	MOUNTED.	RETOUCHED
10 x 12	\$1.25	\$1.50	\$2.75
11 x 14	1.50	1.75	3.00
14 x 17	1.75	2.25	3.50
16 x 20	2.25	2.75	4.00
18 x 22	2.50	3.00	4.50
20 x 24	2.75	3.25	5.00

From good original negatives only.

When negatives cannot be furnished, add \$1 to above prices.



## SUNDRIES.

Ferro Prussiate Paper, 25 sheets, 4×5	20
“ “ “ “ 5×7	35
Photo Clips, per doz.,	25
Rubber Finger Tips, per set,	15
Developing Thimbles,	15
Negative Clasps,	15
Litmus Paper, per sheet,	05
6×7 Photograph Albums,	1 25
7×10 “	1 50
10×12 “	2 25
11×14 “	2 50
3½×3½ Negative Preservers, per 100,	80
4×5 “	35
5×7 “	45
5×8 “	45
6½×8½ “	50
8×10 “	65
2×2½ Mounts, for Baby Hawk-Eye, per dozen,	12
3½×3½ “ “ Hawk-Eye, Jr.,	15
4×5 Plain Mounts, light, per 100,	65
5×7 “ “	1 00
4×5 “ “ dark,	85
5×7 “ “	1 40
4×5 Gilt Edge Mounts, light,	1 15
5×7 “ “ “	1 85
4×5 “ “ “ dark,	1 35
5×7 “ “ “	2 25
Focusing Cloth, 1 yard,	50
“ “ 1½ “	75
Minimum Graduates,	25
2 Ounce “	30
4 “ “	35
6 “ “	40
8 “ “	45
½ Pint Glass Funnels,	20
1 “ “	25
3 inch Glass Stirring Rods,	05
4 “ “	07
6 “ “	10
8 “ “	15
6×8 Orange or Ruby Glass,	20
7×9 “	25
8×10 “	30
10×12 “	50
4×5 Glass Trimming Forms,	45
4½×6 “	55
5×7 “	60
5×8 “	70
6½×8½ “	80
8×10 “	1 00

Blotting Paper, per sheet,	10
6 inch Squeeges,	40
8 “ “	50
12 “ “	75
Ferrotypes Plates,	15
Mounting Paste, ½ pint,	25
Hypo-Sulphite of Soda, per pound,	06
Metol, Hauff, per ounce,	75
Glycine, “	75
Eikonogen, “	50
Hydrochinone, “	50
Sulphite of Soda, (crys.) per pound,	30
Carbonate “	20
Bi-Carbonate of Soda, “	12
Chloride of Gold, 30 gr.	1 10
Powdered Alum, per pound,	10
Chrome Alum, “	20
Carbonate of Potash, “	30
Bromide of Amonium, per ounce,	15
Acetate of Soda, per pound,	50
Holder for using Hub Flash Powder,	75
Tripod Screws,	25
Transparency Glass, all sizes,	
Caps for Lenses, small size,	25
“ “ large size,	40
Flanges for 4×5 and 5×7,	1 00
“ lenses of other manufacture than ours — made to order.	
Bulb and tube for shutters,	35
Retouching Pencils,	15
Gihon's Opaque, per cake,	50
India Ink, per stick,	15
Spotting Brushes,	15
3½ inch Circle Mask, per dozen	20
Lantern Slide Masks, “	25



## INDEX TO CONTENTS.

Adjusters.....31	Holders .....24
Bargain List .....42-43	—See Bargain List.....42
Bellows .....25	Kits .....25
Brushes—Bristle, Camels Hair 33-34	Lanterns .....27-28
Cameras — Baby Hawk-Eye.....10	Lens Boards.....31
—Century “ .....18	Lenses—Blair Rapid Rectilinear..22
—English Compact R.B. 6-7	—Taylor & Hobson.....22
—Hawk-Eye, Jr.....11	—See Bargain List.....42
—4×5 Hawk-Eye, Jr.....12	Miscellaneous.....43
—Hawk-Eye.....13	Mounting Solution.....34
“ 4×5 Folding 14	Negative Boxes.....32
“ Special “ 15	—Drying Racks.....33
“ No. 1, 5×7..16	Outfit—Developing and Printing..39
“ No. 2, “ ..17	Paper—Aristotype.....38
“ No. 3, “ ..18	—French Satin, Jr.....38
“ “ 6½×8½..18	Paper Cutter.....28
—Imp. Reversi. Back 3-4-5	Price List Print'g and Develop'g..39
—Imp. Cincinnati R. B. . . .8	Print Mounters.....33
—Kamaret .....20	Printing Frames.....32
—“The 400”.....21	Roll Holder.....19
—See Bargain List.....42	—See Bargain List.....43
Cases for Carrying.....30	Shutter .....23
—See Bargain List.....43	Slides for Holders.....24
Developers.....34-35	Sundries.....40-41
Dry Plates.....35	Toning Solution.....35
Drying Racks.....33	Trays—Hard Rubber.....28
Enlarging.....39	—Indented Rubber .....29
Extensions .....9	—Japan.....29
Extension Fronts.....31	Tripods—Combination .....27
Film—Blair's Roll .....36	—Compact Adjustable.....26
—Cut .....35	—English Folding.....26
—Sunlight, Roll.....37	—See Bargain List.....43
Flash Light Powder.....38	

## IMPORTANT SUGGESTIONS

AS TO

## ORDERING, SHIPMENT, AND TERMS.

THIS EDITION supersedes all former ones, and any special or outfit circulars previously published will be governed by prices herein quoted. The same, however, are subject to changes caused by fluctuations in prices of material used, etc. Buyers will receive the benefit of any reduction in price, even when not aware of the change.

We would ask you to read carefully what is said of the articles you intend to include in your order, as we are compelled to fill all such of your favors by guidance of these lists, etc., and cannot be held responsible for mistakes caused by ordering without judicious reference to them.

We guarantee all goods manufactured or sold by us to be as represented, and our prices will be found on investigation to be low, compared with those of equal quality. Orders for goods of our own manufacture will be filled, if stated in the order, with the privilege of examining before paying, in accordance with our terms, which are Cash on Delivery. Express and other charges for transportation to be paid by party ordering.

Parties unknown to us, desiring goods sent C.O.D., whether with privilege of examining or not, must remit one-third the estimated amount of invoice with the order.

Write as plainly as possible, giving Name, Town, County, and State; also, Post Office address and directions for shipping—whether by Express or Freight. All orders will be shipped by Express unless otherwise requested. Small parcels, not over 4 lbs. weight, and which do not contain glass in any form, can be sent through the mail at risk of the purchaser. We do not pay postage—remit when ordering. All our goods are packed carefully, and we cannot be held accountable for any damage after a package leaves our hands.

The Express Company's charges for collecting and returning money on C.O.D. bill must be paid by party ordering goods.

Remittances may be made by Draft, Post Office or Express money orders. Amounts under \$5.00 may be sent by Postal Note.

THE BLAIR CAMERA CO.