

THE PREMO CAMERA

FOR SALE BY

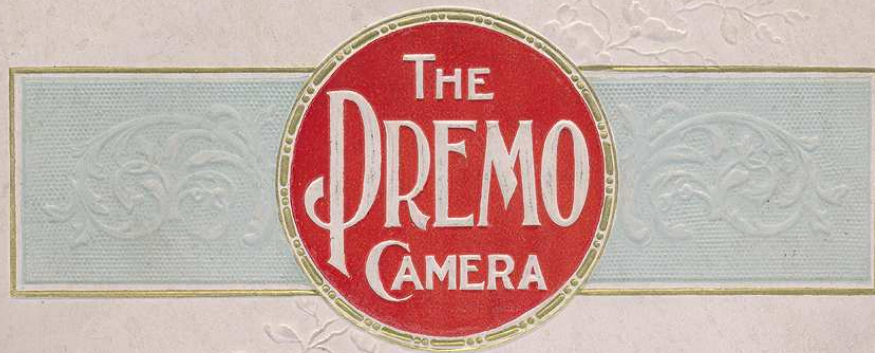
E. R. COBURN CO.,

866 Elm Street,

MANCHESTER, N. H.

Rochester Optical Co.,
Rochester, N. Y.

1896



Manufacturers of
Photographic Apparatus

LP 1143

1896.



PREMO CATALOGUE,

PUBLISHED BY

ROCHESTER OPTICAL CO.,

ROCHESTER, N. Y.





THE PREMO FACTORY,
ROCHESTER, N. Y.

Premo Cameras.



PREMO CAMERAS are *distinctive*. The general workmanship, showing clearly the attention given to the minutest detail, and the fact that they possess new and novel features entirely their own—render them so. Even to the casual observer there is that “something” about the entire series, which creates a favorable impression, and upon careful examination leaves no doubt as to their high quality.

Premo Cameras have achieved an enviable reputation the world over. Their perfect construction and ease of manipulation, combined with grace, beauty and superb finish, have placed them in the front rank—and they are to-day the favorite cameras with the foremost amateur and professional photographers.

Having largely increased our facilities, we enter the season of 1896 fully equipped to maintain the high standard of excellence which has always characterized our products.

With a new and well appointed factory, containing the latest and most approved machinery, a corps of skilled mechanics in each department—combined with years of practical experience, and an honest desire to produce only the best goods, we can safely assert that our apparatus in the future, as in the past, will stand at the head.

Premo Cameras for 1895 were justly considered models of completeness in every way, and many of our friends considered further improvement almost an impossibility. But we are progressive—being constantly alert for new ideas possessing real value. After much study and numerous experiments, we have made several important changes in the series of Premos for 1896—not the least being a reduction in the size and weight of each style. New patterns have also been added, a detailed description of which will be found in the following pages.

We desire to thank our many friends for their kind words and numerous testimonials regarding the quality of our apparatus, and to assure them the same high standard shall be maintained.

Our old patrons are our best advertisers. Through their influence we have had the pleasure of adding many new names to our books. Both old and new friends unite with us in spreading wide the fact that "PREMOS PRODUCE PERFECT PICTURES."



AMATEUR PHOTOGRAPHY

is growing more and more in favor the world over. It affords greater attractions than all the arts heretofore introduced in popular form, for while it answers fully the requirements of mechanical taste, it offers constant opportunities for the exercise of other intellectual qualities.

THE LOVE OF PICTURES

and the desire to produce them in some form, are prominent characteristics in the human mind. Formerly lovers of the beautiful tried to garner up the choice bits of nature with the aid of brush or pencil; but now how easy to save not only outline but detail as well with the camera.

PHOTOGRAPHY IS INSTRUCTIVE

enjoyable, and very fascinating. It educates the eye, teaches one to observe more closely objects in the every-day walks of life, and is in every way elevating to the human mind. So simple and certain are its methods that an intelligent child can make admirable pictures; yet so mysterious are the causes which produce the exquisite results that scientists disagree and are in doubt as to their precise nature.



THE VALUE OF PHOTOGRAPHY is now recognized by leading manufacturers, architects, engineers, artists, physicians, surgeons—in fact by men and women in nearly every walk of life.

FOR THE BICYCLIST photography affords the means of securing a pictorial diary of the many scenes and incidents constantly passing in pan-

oramic view, as he pedals mile after mile on his steed of steel.

In the following pages will be found apparatus designed especially for the use of Wheelmen. So compact and portable are these new cameras, that they can be attached to a bicycle the same as a tool bag, without causing any inconvenience, and the additional weight is so slight as not to be noticeable.

TO THE TOURIST photography affords a never ending source of enjoyment. To record with accuracy the events and scenes of his tour is an enjoyment at the time, and a greater one when he sees the finished photograph which is always a valuable memento of a pleasant holiday.



BUSINESS MEN own a Premo for the pleasure they derive from it, and as a source of relaxation from the cares of the office. The most enthusiastic amateurs are among those who stand high in the business world.

MANUFACTURERS recognize the value of photography as a means of accurately representing their products. A photograph of a machine or other wares gives a truthful and readily comprehended idea of their value; the minutest detail, which neither pencil, brush or graver can portray accurately, are faithfully represented whether the article is photographed in its natural size, reduced or enlarged.

INSURANCE MEN use photography to a great extent to take views of risks to send to the home office, as a photograph conveys more definite knowledge than a sketch or diagram, and is much easier obtained.

PHYSICIANS AND SURGEONS with the aid of a Premo Camera are enabled to note and preserve for reference, photographs of the many interesting cases constantly being brought under their care. The exposure is all that is necessary to be made in the sick room, and requires but a few moments time.



ARTISTS now use the Premo to replace the slow process of sketching. Where it would require hours to sketch a view, it will take but a few seconds to make an exposure with the camera, and the minutest detail is preserved.

SPORTSMEN will find the Premo camera a valuable companion. Pic-

tures of camp-life will prove intensely interesting to the friends at home, who are thus enabled to catch a glimpse of life in the woods. Then too they are not "fish stories" when you can show a photograph of the "catch." A camping outfit is not complete without a camera.

ARCHITECTS find the Premo invaluable, as it enables them quickly and at a small cost to secure a record of their executed work to show a client when necessary. The power of the photograph to seize the minutest detail, gives it a value far beyond the most careful free-hand sketch. Not only is there a charm to the architect in photographing his own work, but the rapidity with which he can secure views of his work, makes photography of great value to him.

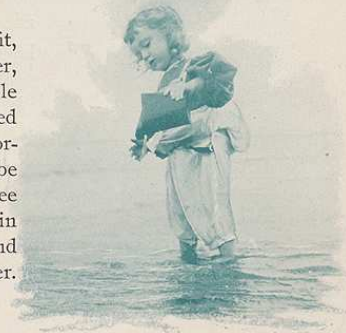


ENGINEERS find the Premo a valuable aid, as in making reports to their chiefs of the progress of the work on a contract, they find that a photograph will convey a more definite idea, and will enlighten him more than the longest written report. Photographs containing data as to the number of men employed, state of weather, etc., will convey an idea how much work a certain number of men will do in a given time.

SELECTING A CAMERA.

A Camera that will afford the amateur the most pleasure, and prove of the highest service, must possess such features as will adapt it for "all around work," as the field now covered by the ambitious photographer is a wide one, and constantly growing.

A good Lens is a most important part of the outfit, as well as a durable Time and Instantaneous Shutter, free from jar and vibration. Compactness is a desirable point, provided strength and rigidity are not sacrificed to secure it. Another feature, and one of great importance, is the ease with which the Camera may be manipulated. It should be simply constructed and free from complicated parts. An instrument combining in the highest degree these important factors will be found to best meet the demands of the amateur photographer.





PREMO combine these features, with many others, in an eminent degree. The Premo, when first introduced in 1893, was pronounced the most complete and practical Hand Camera in the market. The models for 1896 eclipse all former efforts, and still render the Premo unapproachable.

CAN I SUCCEED? We are frequently asked the question, "Can I succeed in making good photographs, even though I have had no experience?" Our answer is "Yes." We wish it were more generally known how easy it is to make the most beautiful photographs. Provided the amateur is supplied with apparatus of approved quality, we have no hesitancy in emphasizing the statement that anyone of average intelligence and ability can readily produce pictures of the most satisfactory character without previous experience.

FULL INSTRUCTIONS for making photographs will be found in our guide book, *The Amateur Photographer*, furnished with each Premo Camera. This book is conceded to be the simplest, most concise and practical work of the kind ever published, and is a complete guide for the beginner in photography. By simply following the directions as given therein, success is assured.

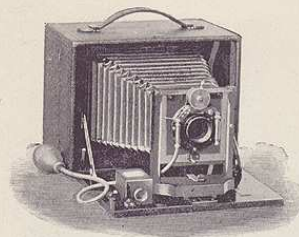
TESTING. Every Premo is carefully tested in actual use before leaving the factory. A negative is made with each camera, and critically inspected, thus insuring perfect adjustment in every part.

SAMPLE PHOTOGRAPHS. Upon receipt of 5 cents in stamps we will forward a specimen photograph made with any 4 x 5 Premo; either Single Achromatic or Rapid Rectilinear Lens as preferred; or for 8 cents we will send a sample made with the 5 x 7 size.

IF YOU ARE IN DOUBT regarding any point—write us. We shall be glad to answer any questions you may ask, and furnish such information as will aid you in making a judicious selection of an outfit.



MADE WITH 4 x 5 PREMO A.
(Reduced.)



The Premo A.

• • • •

PREMO A is the original model, first introduced in 1893, and which met with such a flattering reception by the best amateur and professional photographers at home and abroad. After careful study and numerous experiments, we have added many new and valuable features, in addition to materially reducing the size and weight. The 4 x 5 measures when closed $5\frac{5}{8} \times 6\frac{7}{8} \times 4\frac{5}{8}$ inches, including space for three plate holders or roll holder, and weighs only a trifle over two pounds. Premo A has Swing Back and Adjustable Front, the working parts of which are entirely within the camera.

The Swing Back is adjusted by a simple mechanical method. A Spring Lever works in a series of notches in a brass plate. Pressure on the lever will allow the back to swing, locking it in the desired position when pressure is removed. The axis of the swing is at the centre of the plate, which is optically correct.

The Lens is the Victor Rapid Rectilinear, adapted for general work, and made especially for use with the Premo. This lens may be removed from the shutter and the Victor Wide Angle substituted when desired, as the cells of both are interchangeable.



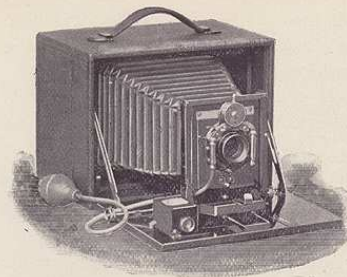
The new Victor Shutter, having both finger and pneumatic release, and fitted with Iris Diaphragm, is one of the features of the outfit. The Lens and Shutter are more fully described on pages 46 and 47. The View Finder is attached to the bed and is reversible. Premo A is provided with two tripod plates, and has a panel at the back for focusing. The ground glass screen is spring actuated. Glass Plates, Cut and Roll Films may all be used. The Plate Holder is the Perfection Jr., with rubber slides, and is conceded to be the best in the market. The change from glass plates to film requires but a moment, and can be made in full daylight. The price includes Camera, Lens, Shutter, and one double Plate Holder.

PRICES:

	$3\frac{3}{4} \times 4\frac{1}{4}$	4x5	5x7	$6\frac{1}{2} \times 8\frac{1}{2}$
Premo A, - -	\$25.00	\$25.00	\$33.00	\$42.00
Extra for Wide Angle Lens,		10.00	12.00	15.00
Extra Plate Holders,	1.25	1.25	1.50	1.75
Cut Film Holder, -	1.35	1.35	1.60	1.85
Roll Holder, empty,	10.00	10.00	12.50	16.00
Roll of Films,				
60 Exposures, 2.50		48 Exp., 3.00	32 Exp., 4.00	24 Exp., 4.00
Leather Covered Case,	2.50	2.50	3.00	3.50
Sole Leather Case,	3.50	3.50	4.00	4.50
			54 Exp., 6.00	48 Exp., 8.00



MADE WITH 4x5 PREMO SR.



The Premo Sr.

• • • •

THE PREMO SR. represents the highest type of the Hand Camera, and will, without question, find favor among those of our friends desiring a strictly high grade camera, possessing the very latest improvements. We have spared no pains to make the Premo Sr. the best camera in existence in every detail. The success of our efforts in this direction can only

be judged by a careful examination of the instrument itself, as it is impossible to otherwise obtain a conception of its "completeness." The substantial construction, extreme compactness and portability, beauty of design, ease of manipulation, and general fine finish, are a few of its many prominent features.

The Premo Sr. is made from selected mahogany, covered with fine black leather. The appearance of the camera when open is extremely handsome, the finely polished mahogany bed, and lacquered metal work being in perfect contrast with the black leather covering.

The Premo Sr. combines all the essential features necessary for either hand or tripod work, in the most compact form.



The Premo Sr. has Double Swing Back, Double Sliding Front and Rack and Pinion for focusing, the working parts of which are entirely within the case. The camera is self contained, and when closed is merely a neat leather covered box.

Both the horizontal and vertical swings are at the centre of the plate, and may be quickly adjusted by means of a spring lever, working in a series of notches in a brass plate at the side.

The Premo Sr. is fitted with two tripod plates, and has a panel at the back for focusing on the ground glass when desired. A reversible View Finder is attached to the bed for upright or horizontal pictures.

We make the bed in two sections, hinged together, when desired for use with extremely Wide Angle Lenses; ordinary Wide Angle Lenses do not need it.

The Lens is the Victor Rapid Rectilinear, possessing great power, and constructed especially for Hand Camera work. It may be removed from the shutter and the Victor Wide Angle substituted, as the cells of both lenses are interchangeable.

The new Victor Shutter, with Iris Diaphragm, is furnished with the Premo Sr. and forms a prominent part of the outfit. It works between the lenses without noise or jar, and may be adjusted for time exposures as well as for rapid instantaneous work. A description of both lens and shutter is given on pages 46 and 47.

The ground glass is spring actuated, and recedes to allow insertion of holder.

The Perfection Jr. Holder with rubber slides is furnished. Glass Plates, Cut and Roll Films may all be used, the holders being interchangeable.

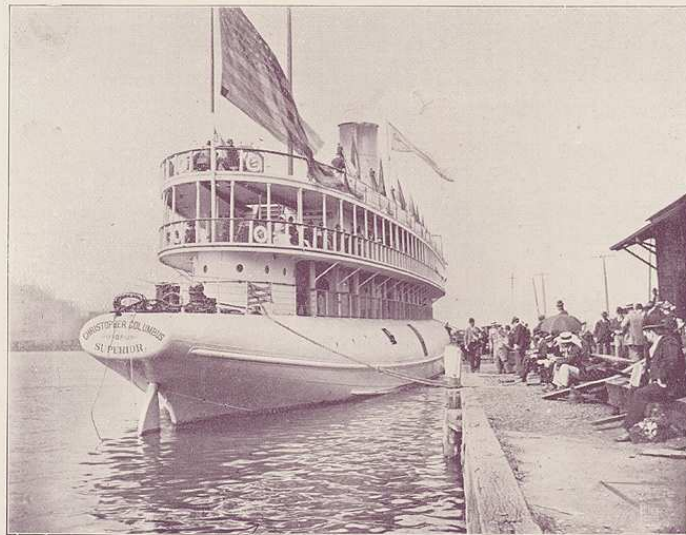
The Roll Holder is the latest pattern, fitted with automatic device for measuring the film, and an indicator for registering the number of exposures made. The change from glass plates to films is but the work of a moment, and as the Roll Holder is provided with a shield, the change can be made in full daylight.

The size of the 4 x 5 Premo Sr. when closed is only 7 x 4 5/8 x 5 5/8 inches, including space for three holders, or Roll Holder, and it weighs but 2 1/2 pounds.

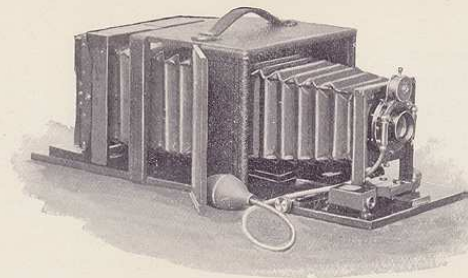
The price includes the Camera, Lens, Shutter, and one Double Plate Holder.

PRICES:

	3 1/4 x 4 1/4	4 x 5	5 x 7	6 1/2 x 8 1/2	8 x 10
Premo Sr., - - -	\$30.00	\$30.00	\$40.00	\$50.00	\$60.00
Extra for Wide Angle Lens,		10.00	12.00	15.00	18.00
Extra for Hinged Bed,		3.00	3.00	3.50	4.00
Extra Plate Holders, - 1.25	1.25	1.50	1.75	2.25	
Cut Film Holders, - 1.35	1.35	1.60	1.85	2.30	
Roll Holder, empty, - 10.00	10.00	12.50	16.00		
Roll of Films, 60 Exposures, 2.50	2.50	48 Exp., 3.00	32 Exp., 4.00	24 Exp., 4.00	
Leather Covered Case, 2.50	2.50	54 Exp., 6.00	48 Exp., 8.00		
Sole Leather Case, 3.50	3.50	4.00	4.50	5.00	



MADE WITH 4x5 LONG FOCUS PREMO.



Long Focus Premo.

• • • • •

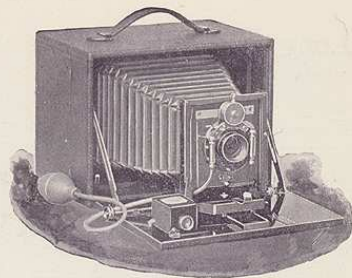
THE LONG FOCUS PREMO, though a comparatively new form of Hand Camera, is a style that has found great favor among a very large number of both amateur and professional photographers. As its name indicates, this style Premo possesses an extra long bellows, adapting it for the use

of very long focus lenses, as well as those usually furnished.

When not fully extended the Long Focus Premo is similar in appearance to the Premo Sr., as a glance at the illustration on the next page will show, and it may be used in the same manner, either for hand or tripod work.

Though but a trifle larger than the Senior, the Long Focus Premo has nearly double the focal capacity.

The extra length of draw is obtained by the addition of a folding back. By simply touching a spring at the top, the back of the camera will drop, forming a bed, upon which the rear portion of the camera carrying the ground glass screen will slide. A glance at the illustration above will convey the idea.



The Long Focus Premo may be used for copying and all other purposes requiring an extended length of bellows.

The Lens is the Victor Rapid Rectilinear, the same as furnished with the Premo Sr., and will be found described on page 43. Being symmetrical the front combination may be removed, and the rear lens used alone when desired, which approximately doubles the length of focus. For distant views this is desirable as the objects in the view are larger in the picture.

The Long Focus Premo has Double Swing Back, Double Sliding Front, and a fine Rack and Pinion movement for focusing. Both the horizontal and vertical swings are at the center of the plate. The vertical swing is adjusted by pressure on the spring lever seen upon opening the door at the side. The horizontal swing is operated by a spring catch visible upon dropping the camera back.

A brilliant reversible View Finder is conveniently placed on the bed of the camera; two tripod plates are also fitted for both upright and horizontal pictures.

The Victor Shutter, with Iris Diaphragm, is fitted to the Long Focus Premo, a full description of which will be found on page 47.

The ground glass screen is spring actuated, and recedes to allow the insertion of the Plate Holder. The Perfection Jr. Holder is furnished with this camera.



Glass Plates, Cut and Roll Films may be used as the holders are interchangeable.

As will be seen from the above description the Long Focus Premo covers a field never before reached by the Hand Camera, and its advantageous features have been quickly recognized and fully appreciated by both our amateur and professional friends.

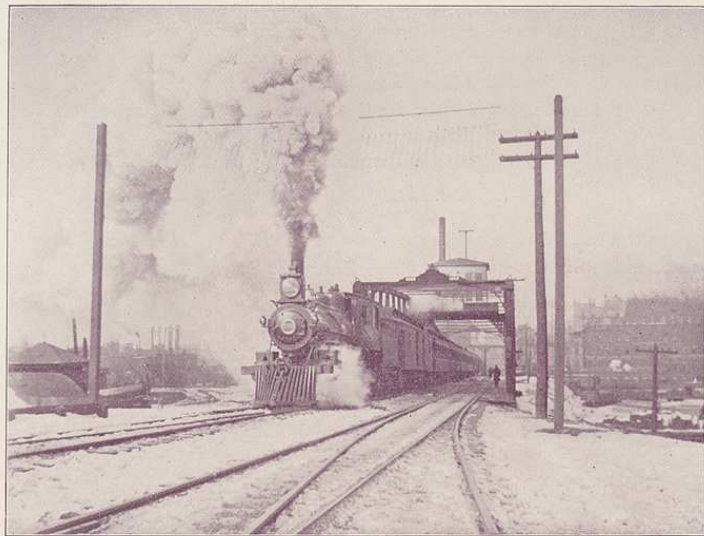
FOCAL CAPACITY OR LENGTH OF BELLOWS.

4x5	5x7	6½x8½	8x10
15 inches.	19 inches.	22 inches.	28 inches.

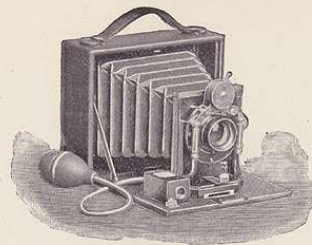
The price includes the Camera, Lens, Shutter, and one Double Plate Holder.

PRICES:

	4x5	5x7	6½x8½	8x10
Long Focus Premo,	\$35.00	\$45.00	\$55.00	\$65.00
Extra for Wide Angle Lens,	10.00	12.00	15.00	18.00
Extra for Hinged Bed,	3.00	3.00	3.50	4.00
Extra Plate Holders,	1.25	1.50	1.75	2.25
Cut Film Holder,	1.35	1.60	1.85	2.30
Roll Holder, empty,	10.00	12.50	16.00	
Roll of Films,				
48 Exposures,	3.00	32 Exp., 4.00	24 Exp., 4.00	
		54 Exp., 6.00	48 Exp., 8.00	
Leather Covered Case,	2.50	3.00	3.50	4.00
Sole Leather Case,	3.50	4.00	4.50	5.00



MADE WITH A 4x5 PONY PREMO.



The Pony Premo.

• • • • •

THE PONY PREMO is another new form of camera which we take pleasure in presenting for the first time this season. A mere description utterly fails to convey an adequate idea of its real merit. It must be seen to be fully appreciated. Although extremely compact, every part is so perfectly adjusted, and works with such exquisite smoothness, that the manipulation is a pleasure.

The 4x5 Pony Premo when closed measures only 5 x 6 x 2 inches, and weighs but 26 ounces.

Owing to its extreme portability and lightness of weight, this style Premo will of course appeal directly to Wheelmen and Tourists generally, yet we feel certain it will also find favor among a large class of amateurs desiring a thoroughly practical outfit to occupy the smallest possible space.

The Pony Premo is made throughout of seasoned mahogany. The entire camera is handsomely covered with fine black leather, and in contrast with the polished and lacquered brass trimmings and rich red leather bellows presents an elegant appearance.



The back of the camera is spring actuated, and recedes to allow the insertion of the Plate Holder. When the Roll Holder is used the back is removed by simply pressing a small brass lever at the right on inside of box. The Roll Holder is then attached to the brass supports at top and bottom. This adjustment can be made in a few seconds.

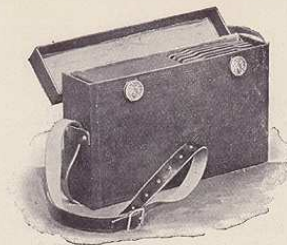
The Lens is the Victor Rapid Rectilinear, made expressly for use with this camera. It will be found well adapted for all classes of work. The Shutter is the Victor, fitted with Iris Diaphragm and pneumatic release. Both Lens and Shutter will be found fully described on pages 46 and 47.

A brilliant View Finder is conveniently located on the bed, and is reversible for upright and horizontal views.

The full sized image may be seen upon the ground glass when desired, by simply turning the small button at the back. The panel covering ground glass will open upward and act as a shield for focusing.

The Pony Premo has adjustable front, and is adapted for use either in the hand or on a tripod.

The plate holder is the Perfection Jr., the simplest and best double holder ever made. Its weight is but 2 ounces, yet it is perfectly strong and durable.



The Pony Premo is furnished with a neat leather case, as shown in the illustration. It will hold Camera, Lens, Shutter, three Plate Holders or Roll Holder, and may be carried by the Shoulder Strap or attached to the frame of a bicycle in the same manner as a tool bag. See illustration on page 28.

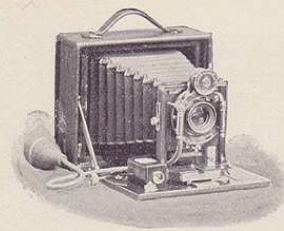
The Roll Holder is the latest pattern fitted with automatic device for measuring the film and an indicator for registering the number of exposures made.

The change from glass plates to film is but the work of a moment, and as the Roll Holder is fitted with a shield the change can be made in full day light.

The price includes Camera, Lens, Shutter, one Double Plate Holder, and Leather Case with Strap.

PRICES:

Pony Premo,	-	-	-	-	-	4 x 5
Extra Plate Holders,	-	-	-	-	-	\$24.00
Cut Film Holder,	-	-	-	-	-	1.25
Roll Holder, empty,	-	-	-	-	-	1.35
Roll of Films, 48 exposures,	-	-	-	-	-	10.00
						3.00



The Pony Premo Sr.

THE PONY PREMO SR. is similar to the regular pattern, in general design. It has, however, the additional adjustments of Double Swing Back, Rising and Sliding Front, and Rack and Pinion movement for focusing, thus adapting it for every variety of work.

Like the regular style, the Pony Premo Sr. must be seen and used in order to fully demonstrate its many meritorious features. The ease of manipulation, extreme compactness, portability and fine finish, will commend it to every amateur and professional photographer desiring a camera of the most compact form, and strictly up to date in every particular.

The 4 x 5 Pony Premo Sr. measures only $5\frac{3}{4} \times 6\frac{3}{4} \times 2\frac{3}{8}$ inches when closed, and weighs 32 ounces. Its portability and lightness of weight will render it exceptionally popular among wheelmen and tourists generally.

The camera is made from selected Mahogany covered with fine black leather. The metal work is of brass, polished and lacquered.

The lens is the Victor Rapid Rectilinear, fitted with the Victor Shutter, having pneumatic release and Iris Diaphragm. A description of both Lens and Shutter is given on pages 46 and 47.



The full sized image can be seen upon the ground glass by turning the small button at the back. The panel covering the screen will open upward and serve as a shield when focusing.

The plate holder is the Perfection Jr.—the simplest and easiest to operate of any in the market.

The Roll Holder is the latest style, fitted with automatic measuring device and indicator. The change from glass plates to film can be made in full daylight.

The Pony Premo Sr. is furnished with a handsome leather case, made to carry the camera complete with three plate holders or Roll Holder. It can be attached to a bicycle in the same manner as a tool bag, or carried by the shoulder strap, as preferred. See illustration on page 28.

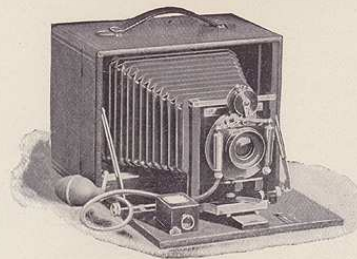
The price includes Camera, Lens, Shutter, one Double Plate Holder and Carrying Case with Strap.

PRICES :

		4 x 5	5 x 7
Pony Premo, Sr.,	- - -	\$30.00	\$38.00
Extra Plate Holders,	- - -	1.25	1.50
Cut Film Holder,	- - -	1.35	1.60
Roll Holder, empty,	- - -	10.00	12.50
Roll of Films, - - -	48 Exposures, 3.00		32 Exp., 4.00 54 Exp., 6.00



SHOWING PONY PREMO WITH CASE ATTACHED TO BICYCLE.



The Premo Sr. Special.

• • • • •

THE PREMO SR. SPECIAL represents the very highest form of Hand Camera, from every point of view. It stands for all that is best in Camera, Lens and Shutter, as well as minor fittings, and no pains have been spared to make the Premo Sr. Special the highest possible grade of Photographic Apparatus.

The Camera is made throughout of Mahogany, handsomely covered outside with fine black leather. Every adjustment, such as Double Swing Back, Rising and Sliding Front, Rack and Pinion Movement, Reversible View Finder, Spring Actuated Ground Glass Screen, etc., etc., is fitted to the Premo Sr. Special.

The description of the Premo Sr., given on page 15, excepting Lens and Shutter, will apply equally well to the Premo Sr. Special.

The merits of the Zeiss Anastigmat Lens, Series IIA, fitted with the Bausch & Lomb Diaphragm Shutter, as furnished with this Camera, are well and favorably known among both amateur and professional photographers the world over. The Series IIA Zeiss Lens embraces an angle of about 80° . It yields an absolutely flat image, free from astigmatism, sharply defined to the extreme edges of the plate, and the speed is such as to particularly commend it for Hand Camera use.

In addition to flatness of field this Lens gives an unusual evenness of illumination, combined with great depth of focus, and is perfectly adapted for making large heads, figures, groups, copying, etc., as well as for general instantaneous work.

The Diaphragm Shutter will meet every requirement of the amateur and professional photographer. It is constructed in the best possible manner, operates without concussion, and is practically noiseless in action. This Shutter works automatically from three seconds to the one hundredth part of a second, and by simply moving a small lever it may be set for time exposure of any desired duration.

With the wide reputation enjoyed by the Premo Sr. Camera, as well as the Zeiss Lens and Diaphragm Shutter, both at home and abroad, no argument is necessary to emphasize the strength of such a combination, photographically considered.

The price includes Camera, Zeiss Lens Series IIA, Diaphragm Shutter and one Plate Holder.

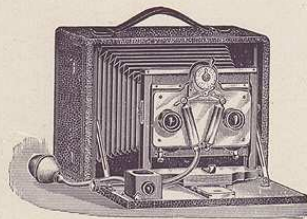
PRICES:

	4 x 5	5 x 7	6 1/2 x 8 1/2	8 x 10
Premo Sr. Special,	\$65.00*	\$82.00	\$100.00	\$120.00
Extra Plate Holders,	1.25	1.50	1.75	2.25
Cut Film Holders,	1.35	1.60	1.85	2.30
Roll Holder, empty,	10.00	12.50	16.00	
Roll of Films,	48 Exposures, 3.00	32 Exp., 4.00 54 Exp., 6.00	24 Exp., 4.00 48 Exp., 8.00	
Leather Covered Case,	2.50	3.00	3.50	4.00
Sole Leather Case,	3.50	4.00	4.50	5.00

*Fitted with the No. 2 Lens.



MADE WITH A 5x7 PREMO SR. SPECIAL.



The Stereoscopic Premo.

• • • •

STEREOSCOPIC photography is one of the most interesting and fascinating branches of the art, and as the Hand Camera is now designed especially for this class of work, it will undoubtedly gain favor among a large number of amateurs, who have heretofore never attempted the production of Stereoscopic pictures.

We can furnish Premo A, Premo Sr., and Long Focus Premo in both 5 x 7 and 6 1/2 x 8 1/2 sizes, arranged for Stereo work, for which the front must be wider than regular.

The Stereo Lenses are a matched pair of 4 x 5 Rapid Rectilinear Lenses, same as are used in 4 x 5 Premo A, and fitted with Bausch & Lomb Stereo Shutter, which works on the same principle as their Diaphragm Shutter.

The Shutter is designed especially for use with Stereoscopic Lenses. The action is so perfect that absolutely the same amount of light is admitted through both lenses. Revolving Diaphragms are provided for stops. The speed may be regulated at will, the shutter working automatically from 3 seconds to 1-100 of a second.

Time exposures of any desired length may be made by adjusting the time lever. Both finger and pneumatic release are attached.

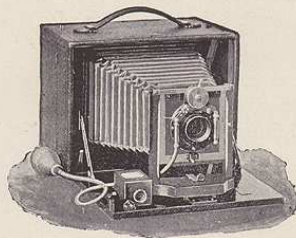
The regular lens and shutter and the stereo lenses are on different lens boards, so that the change from regular full sized views to stereo work is but the work of a few seconds.

The price includes the Victor Rapid Rectilinear Lens and Victor Shutter for full sized views, and the Stereo Lenses and Shutter, together with a division in the camera, and one Plate Holder. Glass plates, cut and roll films may all be used.

Wide Angle Lenses may be adjusted for full size views, same as with the Premo A or Premo Sr.

PRICES:

			5x7	6 1/2 x 8 1/2
Stereo Premo A,	-	-	\$70.00	\$80.00
Stereo Premo Sr.,	-	-	75.00	85.00
Stereo Long Focus Premo,	-	-	80.00	90.00
Extra for Wide Angle Lens,	-	-	12.00	15.00
Extra for Hinged Bed,	-	-	3.00	3.50
Extra Premo Holders,	-	-	1.50	1.75
Cut Film Holders,	-	-	1.60	1.85
Roll Holder, empty,	-	-	12.50	16.00
Roll of Films,	-	-	32 Exposures, 4.00	24 Exp., 4.00
			54 Exposures, 6.00	48 Exp., 8.00
Leather Covered Case,	-	-	3.00	3.50
Sole Leather Case,	-	-	4.00	4.50



The Premo B.

PREMO B has proved one of the most popular style Cameras in the whole series. It follows closely in design Premo A, though not made of mahogany, and is not so highly finished. The same care, however, is exercised in its construction throughout, and for a high grade camera at a moderate price it stands second to none.

Premo B is provided with our new Central Swing Back and Rising and Falling Front, thus adapting it for both hand and tripod work. The Swing Back is adjusted by means of a spring lever working in a series of notches in a brass plate, visible upon opening the door at the side. Pressure on the lever will allow the back to swing, locking it in desired position when pressure is removed.

Premo B is furnished with the Victor Shutter, having Iris Diaphragm and pneumatic release, for description of which see page 47.

Either the R. O. Co.'s Single Achromatic or the Victor Rapid Rectilinear Lens is fitted, as may be preferred. The Rapid Rectilinear Lens is precisely the same as furnished with Premo A.

A reversible View Finder is fitted to the bed for both vertical and horizontal pictures; also two plates for attaching the camera to a tripod. The ground glass screen is spring actuated, and recedes to allow the insertion of the plate holder.

Glass Plates, Cut and Roll Films may be used, as the holders are interchangeable.

The outside dimensions of 4 x 5 Premo B are only $4\frac{5}{8} \times 5\frac{7}{8} \times 5\frac{5}{8}$ inches, including space for three plate holders or Roll Holder, and the weight a little over two pounds. It is handsomely covered with fine black leather, and has a leather handle for carrying.

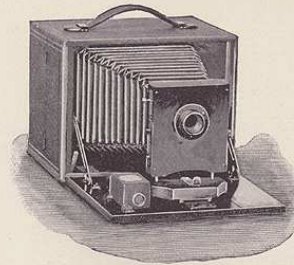
Price includes Camera, Lens, Shutter and one Double Plate holder.

PRICES:

	4 x 5	5 x 7
Premo B, with Achromatic Lens,	\$16.00	\$23.00
With Victor Rapid Rectilinear Lens,	21.00	30.00
Extra Premo Plate Holders,	1.25	1.50
Cut Film Holders,	1.35	1.60
Roll Holder, empty,	10.00	12.50
Roll of Films,	48 Exposures, 3.00	32 Exp, 4.00 54 Exp, 6.00
Leather Covered Case,	2.50	3.00
Sole Leather Case,	3.50	4.00



MADE WITH 4 x 5 PREMO B.



The Premo C.

• • • • •

PREMO C will at once find favor among a large class of amateurs desiring a thoroughly practical camera at a moderate outlay.

This camera is very carefully made, the workmanship being of the best. It is exceedingly neat in appearance, being shellacked inside and covered with fine black leather outside. It is provided with Swing

Back and Sliding Front. The back swings from the *center*, and is adjusted by means of a spring lever working in a series of notches in a brass plate, seen upon opening the door at the side.

Premo C is fitted with our well known Single Achromatic or Rapid Rectilinear Lens, with Rotating Diaphragm. It has our New Safety Time and Instantaneous Shutter, a neat and effective device for all classes of work. The shutter is quickly set by a lever at the side, the leaves remaining stationary.

The ground glass screen on Premo C is spring acting, and recedes to allow the insertion of the plate holder. A hinged panel at the back permits the full sized image to be seen while focusing. Two tripod plates are fitted for using the Premo C as a regular view camera.

The View Finder is attached in a convenient position on the bed, and is reversible for both upright and horizontal pictures.

Premo C is very compact, the 4 x 5 measuring only $4\frac{5}{8} \times 5\frac{5}{8} \times 5\frac{7}{8}$ inches, including space for three plate holders or roll holder. It weighs but a trifle over two pounds.

Either Glass Plates, Cut or Roll Films may be used.

From the above description it will be seen that Premo C is fitted with the necessary adjustments for the large and varied character of work usually attempted by the ambitious amateur. We can heartily recommend it to all desiring a thoroughly practical camera at a moderate price.

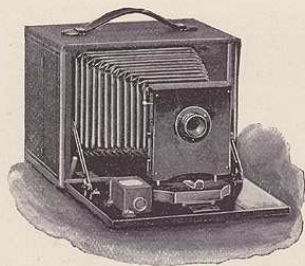
Price includes Camera, Lens, Shutter and one Double Plate Holder.

PRICES:

		4x5	5x7
Premo C, with Achromatic Lens,	-	\$12.00	\$20.00
With Rapid Rectilinear Lens,	-	17.00	26.00
Extra Premo Plate Holders,	-	1.25	1.50
Cut Film Holders,	-	1.35	1.60
Roll Holder, empty,	-	10.00	12.50
Roll of Films,	-	48 Exposures, 3.00	32 Exp., 4.00 54 Exp., 6.00
Leather Covered Case,	-	2.50	3.00
Sole Leather Case,	-	3.50	4.00



MADE WITH 4x5 PREMO C.



The Premo D.

• • • •

PREMO D is similar in appearance to style C, though it is without the Swing Back, and spring actuated ground glass screen.

The same care is exercised in its construction as in the others of the series, and this Camera will prove very popular among those who do not care for the adjustments named.

Premo D has Sliding Front for adjusting sky and foreground, and is fitted with Single Achromatic or Rapid Rectilinear Lens with Rotating Diaphragm. Our New Safety Shutter is also supplied, being a neat and effective device for both time and instantaneous work. The Shutter is set by a lever at the side, the leaves remaining stationary.

The Ground Glass Screen is removable; to focus on the Ground Glass, slide the screen in the forward groove; when placed in the rear groove it acts as a support for the plate holder.

A brilliant Reversible View Finder is attached in a convenient position on the bed of the camera.

Two tripod plates are also fitted for both upright and horizontal pictures.

Premo D, like style C, is both compact and light in weight. When closed the 4 x 5 measures only $5\frac{1}{4} \times 5\frac{1}{4} \times 6\frac{3}{4}$ inches, including space for three plate holders or roll holder, and it weighs but a trifle over two pounds. Handsomely covered with fine black leather.

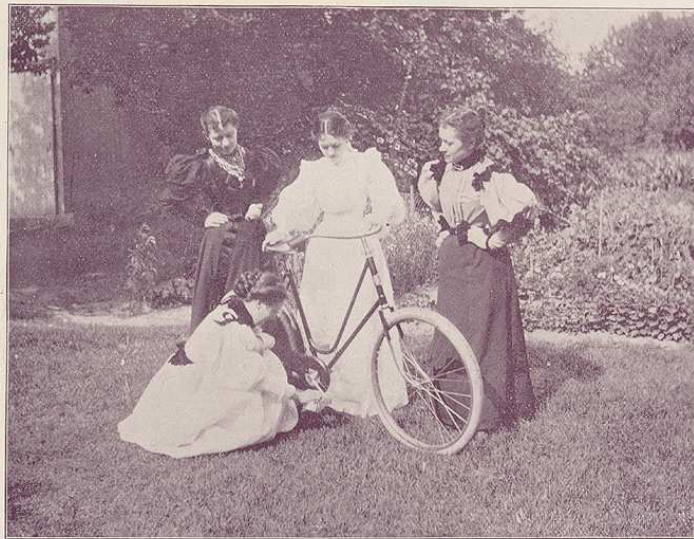
Premo D is a thoroughly practical camera, and will fully meet the demands of a large class of amateurs. It is without question the best Folding Camera ever offered at so low a price.

Glass Plates, Cut and Roll Films may all be used.

Price includes Camera, Lens, Shutter, and one Double Plate Holder.

PRICES:

		4x5	5x7
Premo D, with Achromatic Lens,	-	\$10.00	\$18.00
With Rapid Rectilinear Lens,	- -	15.00	24.00
Extra Premo Plate Holders,	- -	1.25	1.50
Cut Film Holders,	- - - -	1.35	1.60
Roll Holder, empty,	- - -	10.00	12.50
Roll of Films,	- - - 48 Exposures,	3.00	32 Exp., 4.00 54 Exp., 6.00
Leather Covered Case,	- - -	2.50	3.00
Sole Leather Case,	- - -	3.50	4.00



MADE WITH 4x5 PREMO D.

Price List of Premo Cameras.

	3¼ x 4¼	4 x 5	5 x 7	6½ x 8½	8 x 10
Premo A, - - - -	\$25.00	\$25.00	\$33.00	\$42.00	
Premo Sr., - - - -	30.00	30.00	40.00	50.00	\$60.00
Long Focus Premo, - -		35.00	45.00	55.00	65.00
Pony Premo, - - - -		24.00			
Pony Premo Sr., - - -		30.00	38.00		
Premo Sr., Special, - -		65.00	82.00	100.00	120.00
Stereo Premo A, - - -			70.00	80.00	
Stereo Premo Sr., - - -			75.00	85.00	
Stereo Long Focus Premo,			80.00	90.00	
Premo B, Achromatic Lens, -		16.00	23.00		
Premo B, Rectilinear Lens,		21.00	30.00		
Premo C, Achromatic Lens,		12.00	20.00		
Premo C, Rectilinear Lens,		17.00	26.00		
Premo D, Achromatic Lens,		10.00	18.00		
Premo D, Rectilinear Lens,		15.00	24.00		

Price with B. & L. Diaphragm Shutter.

	3¼ x 4¼	4 x 5	5 x 7	6½ x 8½	8 x 10
Premo A, - - - -	\$32.00	\$32.00	\$41.00	\$51.00	
Premo Sr., - - - -	37.00	37.00	48.00	59.00	\$69.00
Long Focus Premo, - -		42.00	53.00	64.00	74.00

Price List of Premo Cameras, With Rapid Universal Lens and Victor Shutter.

	4 x 5	5 x 7	6½ x 8½	8 x 10
Premo A, - - - - -	\$36.00	\$48.00	\$62.00	
Premo Sr., - - - - -	41.00	55.00	70.00	
Long Focus Premo, - - - - -	46.00	60.00	75.00	

Price with Rapid Universal Lens and Diaphragm Shutter.

	4 x 5	5 x 7	6½ x 8½	8 x 10
Premo A, - - - - -	\$44.00	\$56.00	\$72.00	
Premo Sr., - - - - -	49.00	63.00	80.00	\$ 95.00
Long Focus Premo, - - - - -	54.00	68.00	85.00	100.00

Price with Zeiss Anastigmat Lens, Series IIA, and Diaphragm Shutter.

	4 x 5	5 x 7	6½ x 8½	8 x 10
Premo A, - - - - -	\$60.00*	\$75.00	\$ 92.00	
Premo Sr., - - - - -	65.00*	82.00	100.00	\$120.00
Long Focus Premo, - - - - -	70.00*	87.00	105.00	125.00

*Fitted with the No. 2 Lens.

The Premo Lenses.

• • •

While it is true that the camera box is a very important part of the equipment, the fact is self evident, that upon the quality of the Lens, depends in a large measure the success of the amateur photographer. Just as the human eye is the entrance of light to the body, so is the Lens of a camera the factor, by which either a perfect or inferior impression of the objects within its range, is reflected on the sensitive plate. In selecting a camera, therefore due consideration should be given to the Lens.

THE VICTOR furnished with the
RAPID Premo Cameras, is
RECTILINEAR very carefully and ac-
LENS curately made. It is
manufactured espe-
cially for Hand Camera work, and will
be found admirably adapted for general
photography, such as portraits, groups,
architectural subjects, landscapes,
copying, etc. It possesses ample speed
for rapid instantaneous exposures, a
flat field, depth of focus, good covering
power, and freedom from distortion.



THE SINGLE
ACHROMATIC
LENS

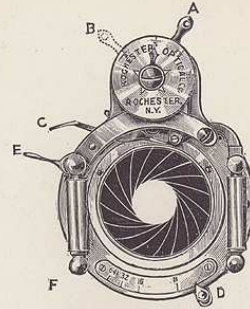
furnished with Premos B, C and D is conceded to be the best of the moderate priced Lenses. It gives wonderful definition with great depth of focus and flatness of field. Though not adapted to such a large variety of work as the Rapid Rectilinear Lens, it nevertheless possesses ample speed, and will be found very satisfactory for general amateur work. It is as near rectilinear as is possible in a Single Combination Lens.

THE VICTOR
WIDE ANGLE
LENSES

are interchangeable with the Victor Rapid Rectilinear, and may therefore be used in the Victor Shutter when so desired. They are particularly valuable for interiors and architectural effects in confined situations. Having a greater angle than the Rectilinear form of Lens, they admit of being nearer the object photographed. Wide Angle Lenses are not so quick working as those of ordinary angle. The principal objection, however, to their more general use is the fact that on account of the increased angle the perspective is necessarily exaggerated.



Premo Cameras are always fitted with the ordinary angle Lens. The additional cost for the Wide Angle is given under the description of Camera.



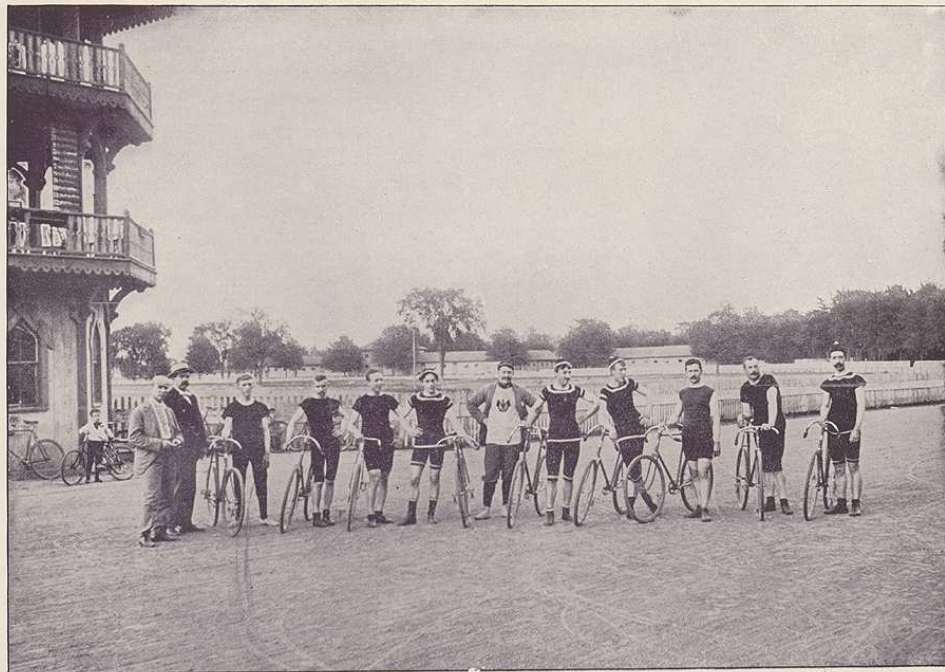
The Victor Shutter.

• • • • •

THE VICTOR SHUTTER is a marvel of ingenuity. All the latest and most approved adjustments, including the Iris Diaphragm, have been added, making it complete in every detail. It works between the lenses, and may be easily and quickly regulated for time and instantaneous exposures. The Shutter is practically noiseless, and perfectly free from vibration. Both pneumatic and finger release are fitted.

The Iris Diaphragm, as applied to the Victor Shutter, is an important feature, and is the best adjustment for regulating the amount of light entering the lens yet devised. By simply moving the lever D to the right or left, the size of the aperture is increased or diminished. The movement of the leaves of the Iris is very smooth, and the size of each opening is indicated by an index and scale on the margin of the shutter. These openings are in accordance with the U. S. or Uniform System, whereby each succeeding smaller stop requires just double the exposure of the preceding.

The manipulation of the Shutter is very simple. To set for instantaneous work, push the arm C up as far as possible. Move the lever A to the left, (Shutter



MADE WITH A 5x7 PREMO B.

facing you) until a "click" is heard. It will then occupy the position shown by dotted lines B. The exposure is made by a gentle pressure on release lever E, or with the bulb as preferred. The leaves always remain closed when setting.

The Victor Shutter works automatically from 1-100 of a second to 1 second. The speed may be varied at will by simply revolving the numbered metal disc at top, to the right or left, until the Index is opposite the speed desired.

Time exposures are made by moving the time arm C *down* as far as possible. Then push lever A to the left as directed for instantaneous work. Pressure on the release lever E or the bulb will open the Shutter; a second pressure will close it.

THE PREMO WITH B. & L. DIAPHRAGM SHUTTER. The Bausch & Lomb Diaphragm Shutter may be attached to the Premo A, Premo Sr. and Long Focus Premo, in place of the regular style, if preferred. It is a very ingenious device, the construction being such that increased depth and covering capacity is given the Lens.

The Diaphragm Shutter will operate automatically from three seconds to the one hundredth part of a second, and by simply moving a small lever it may be set for time exposures of any desired duration. It is constructed in the very best manner, and works without noise or jar, even when set at the highest speed.

For price list of Premo Cameras fitted with Diaphragm Shutter see page 43.



The New Safety Shutter.

PREMOS C and D are fitted with our New Safety Shutter—an exceedingly neat and effective device for time and instantaneous exposures.

While not so elaborate as the "Victor," it is well adapted for the general work of the amateur. Its motion is perfectly smooth, and free from jar.

The Shutter is set by moving a spring lever in a series of notches at the side, the plate always being covered. Exposure is made by a gentle pressure on a release lever at the side. The speed may be varied from one-tenth to one-fiftieth of a second, depending on the notch into which the spring lever is placed. The notch nearest the center of metal plate will give the slowest speed, while the one nearest the end will give the highest. Time exposures of any desired duration are made by using the time lever. Revolving Diaphragms are fitted to all Safety Shutters.

Full instructions for manipulation accompany each camera.



The Plate Holder.

Premo Cameras are furnished with the Perfection Jr. Plate Holder, conceded to be the most efficient, durable and easiest to operate of any Holder in the market without exception. It is fitted with our patent spring bar, by means of which the Holder may be readily loaded in the dark—so simple is the operation. The Perfection Jr. is extremely compact and very light, the 4x5 weighing only two ounces. Kits for smaller sized plates may be used when desired.

ROLL HOLDER All Premo Cameras are adapted for both Glass Plates and Roll Films. The Roll Holder, which is necessary for the use of film, is not included in the price, as most of our custom-

ers prefer to use plates. Unless you contemplate a long journey we would advise the purchase of the Premo with plate holders only, for the start at least. You can purchase the Roll Holder at any subsequent time, and it will fit the camera perfectly. For a long trip however, where you desire to make a large number of exposures before developing, films will be found very convenient, being lighter than glass and more portable.

The Premo Tripod.

This new Tripod is designed especially for use with Hand Cameras. It is the lightest and most compact form ever made, yet is rigid and perfectly durable in all its parts.



The Premo Tripod is made with three joints. The lower section slides into the second, and these two into the third, while the upper section folds back upon the third.

When closed it measures only 16 inches long, and weighs but 14 ounces, including the Aluminum top. The length extended is 55 inches. It is quickly set up for use and readily adjusted for height by means of a milled head. The legs of the Tripod may be grasped at the top for the purpose of changing its position, without fear of separating them from the head. They are held securely in place by a device which prevents them from becoming detached, except at the will of the operator. Made of seasoned spruce with brass trimmings.

No. 1, for 4 x 5 and 5 x 7 Cameras,	-	-	-	-	\$4.50
No. 2, for 6½ x 8½ Cameras,	-	-	-	-	5.00

The Petite Tripod.

The Petite Tripod is another new form made expressly for Hand Camera use. Its construction is somewhat similar to the Premo, being made with three joints, but the top remains attached.



The Petite Tripod is exceedingly compact, the length when closed being only 16¼ inches. When extended for use the length is 55 inches. Weight only 17 ounces complete. The construction of the Petite Tripod renders it not only compact but rigid as well, and it is without question one of the best tripods yet introduced.

Petite Tripods are thoroughly well made from the best seasoned spruce, and handsomely finished with polished and lacquered brass trimmings.

The head can be detached from the legs if desired. This will be found convenient for packing in a small valise or hand satchel.

No. 1, for 4 x 5 and 5 x 7 Cameras,	-	-	-	-	\$5.00
-------------------------------------	---	---	---	---	--------

Developing and Printing.

• • • •

Many amateur photographers are satisfied with merely "taking" a picture, and prefer to have the developing and finishing done for them. While, in our opinion, very much of the pleasure in photography is lost by this method, yet for those who do not care to investigate the mysteries of the dark room, we have provided a Finishing Department with ample facilities for the prompt execution of all orders. This work you can also have done by your local photographer, and in fact we recommend this course if you are using glass plates.

Price List for Developing and Printing.

	Developing, Printing and Mounting.	Developing Only.	Printing and Mounting Only.
3 1/4 x 4 1/4	12 cents.	6 cents.	8 cents.
4 x 5	15 "	8 "	10 "
5 x 7	20 "	10 "	12 "
5 x 8	20 "	10 "	12 "
6 1/2 x 8 1/2	25 "	10 "	17 "
8 x 10	35 "	15 "	25 "

COMPLETE DEVELOPING AND PRINTING OUTFITS.

For the large number of amateurs who prefer not only to "take" pictures, but finish them as well, we have arranged the following complete outfits, comprising the necessary articles for developing the negative and making the print.

OUTFIT No. 1.

- | | |
|------------------------------|-------------------------------|
| 3 Tin Developing Trays. | 1 Printing Frame. |
| 1/2 dozen Dry Plates. | 1 dozen Aristotype Paper. |
| 1 R. O. Compact Candle Lamp. | 1 Bottle Toning Solution. |
| 1 Bottle Hydrogen Developer. | 1/2 pound Hypo Sulphite Soda. |
| 1 Glass Graduate. | 1 dozen Card Mounts. |

Price, neatly boxed, -	-	-	4x5 \$2.00	5x7 \$3.25
------------------------	---	---	---------------	---------------

OUTFIT No. 2.

This outfit contains a greater variety of accessories than No. 1, and a larger quantity of plates, chemicals, etc. It includes

- | | |
|------------------------------|--------------------------------------|
| 3 Jap. Tin Developing Trays. | 1 Universal Ruby Lantern. |
| 1 dozen Dry Plates. | 1 Favorite Printing Frame. |
| 1 Glass Graduate. | 1 dozen Aristotype Paper. |
| 1 Box Hydrogen Developer. | 1 Bottle Toning Solution. |
| 1 pound Hypo Sulphite Soda. | 25 Card Mounts. |
| 1 Jar Cream Paste. | 1 copy <i>Amateur Photographer</i> . |

Price, -	-	-	-	4x5 \$4.00	5x7 \$4.75	6 1/2 x 8 1/2 \$6.00	8 x 10 \$7.50
----------	---	---	---	---------------	---------------	-------------------------	------------------



The Universal Dark Room Lantern.

The UNIVERSAL is the most popular moderate priced Lantern in the market. The ventilation is perfect and the volume of light ample for the purpose of the ordinary amateur.

It is fitted with a new style burner, which yields a steady and even light, without flicker or flare.

The Universal is made in two sizes, the No. 2 being larger and has the body hinged at the back, while in the No. 1 the glass is raised in the slide to light the wick.

Price, No. 1, - \$0.80 | Price, No. 2, - \$1.00

The Carlton Lantern.

The CARLTON LANTERN is made upon an improved plan, giving an abundant draft, and complete ventilation, hence no smoke, no fume, but a steady, safe light, *and plenty of it.*

The front is fitted with both Orange and Ruby glass. The body is hinged at the back, giving easy access to the interior. The flame is regulated entirely from the outside. The back of the lamp serves as a reflector, and aids in producing a volume of light sufficient for work in any dark-room. Made in two sizes.

Price, No. 1, - - \$1.50 | Price, No. 2, - - \$2.00

Japanned Tin Developing Trays.



4 x 5	-	-	-	\$0.20	6½ x 8½	-	-	\$0.30
5 x 8	-	-	-	25	8 x 10	-	-	40

Vulcanized Rubber Trays.



The neatest Developing Tray yet introduced is that made from vulcanized rubber. It has a polished surface, thus it is readily kept clean.

		SHALLOW.	DEEP.			SHALLOW.	DEEP.
4 x 5	-	\$0.30	\$0.50	6½ x 8½	-	\$0.75	\$0.85
5 x 8	-	60	70	8 x 10	-	1.10	1.15

Papier Mache Trays.

FOR DEVELOPING, FIXING OR TONING.



Papier Mache Trays are light in weight, yet tough and strong. As they are not affected by the action of chemicals, and are easily kept clean, we recommend them for all purposes.

Our trays have ridges along the bottom, to facilitate handling the plate.

4 x 5	-	-	-	\$0.30	6½ x 8½	-	-	\$0.80
5 x 7	-	-	-	50	8 x 10	-	-	1.00
5 x 8	-	-	-	55	10 x 12	-	-	1.25

Carlton's Hydrogen Developer.

HYDROGEN DEVELOPER is a combination of Hydrochinon and Eikonogen, possessing the good qualities of both. The proportions are so well balanced that the results on any make of plates show the detail and exquisite softness of the Eikonogen, together with the crispness and density of the Hydrochinon.

Hydrogen Developer never becomes thick, and will not stain either the plate or fingers.

Price, 8-oz. bottle,	-	-	-	-	-	-	-	-	\$0.30
" 16-oz. "	-	-	-	-	-	-	-	-	50
" 32-oz. "	-	-	-	-	-	-	-	-	90

Carlton's Pyro-Potash Developer.

CONCENTRATED.

We claim for this developer that more can be done with a plate than almost any developer in the market; the operator has almost perfect control over the plate, and brilliant negatives is the rule. Put up in two 8-oz. bottles, in card-board box.

Per box,	-	-	-	-	-	-	-	-	\$0.60
----------	---	---	---	---	---	---	---	---	--------

Carlton's Hydrochinon Developer.

CONCENTRATED.

Will not stain the fingers or plate; gives clear shadows; especially desirable for transparencies. Can be used over and over again.

Put up in two 8-oz. bottles, in card-board box.

Per box,	-	-	-	-	-	-	-	-	\$0.50
----------	---	---	---	---	---	---	---	---	--------

Dry Plates.

We sell several makes of Dry Plates, among them being Forbes', Cramer's, Seed's, Carbutt's and Stanley's.

3¼ x 4¼, per doz.,	-	\$0.45	5 x 8, per doz.,	-	\$1.25
4 x 5, " "	-	.65	6½ x 8½, " "	-	1.65
5 x 7, " "	-	1.10	8 x 10, " "	-	2.40
3¼ x 4, Transparency Plates, for Lantern Slides, per doz.,	-	-	-	-	.65

Aristotype Paper.

	PER DOZEN.	PER ½ GROSS, in one package.	PER GROSS, in one package.
3¼ x 4¼,	-	\$0.20	Not furnished, \$1.20
4 x 5,	-	25	" 1.50
3½ x 5½, Cabinet,	-	25	" 1.35
4 x 6,	-	25	" 1.50
5 x 7,	-	35	\$1.60 2.65
5 x 8,	-	40	1.75 3.00
5½ x 7¾, Paris Panel,	-	45	1.95 3.40
6½ x 8½,	-	55	2.30 4.10
8 x 10,	-	75	3.25 6.00

Ferro-Prussiate or Blue Paper.

Put up in light-tight packages of two dozen sheets.

3¼ x 4¼, per package,	-	\$0.20	5 x 8, per package,	-	\$0.40
4 x 5, " "	-	.20	6½ x 8½, " "	-	50
5 x 7, " "	-	.35	8 x 10, " "	-	75

Card Mounts.

When mounts are ordered sent by mail, postage must accompany the order. The amount to add per package for postage on the different sizes, is as follows: $3\frac{1}{4} \times 4\frac{1}{4}$, 13 cents; 4×5 , 15 cents; Cabinet, 17 cents; $4\frac{1}{4} \times 6\frac{1}{2}$ and Stereoscopic, 19 cents; 5×7 , 20 cents; 5×8 , 26 cents; $6\frac{1}{2} \times 8\frac{1}{2}$, 37 cents; 8×10 , 45 cents.

No. 1.—Plain, Round Edge, White, Rose or Primrose.

PER PACKAGE OF 25.					
$3\frac{1}{4} \times 4\frac{1}{4}$,	-	-	\$0.18	5 x 7,	\$0.30
4 x 5,	-	-	20	5 x 8,	35
Cabinet,	-	-	25	$6\frac{1}{2} \times 8\frac{1}{2}$,	50
$4\frac{1}{4} \times 6\frac{1}{2}$ or Stereoscopic,	-	-	30	8 x 10,	70

No. 2—White, Rose or Amber, with Gilt Beveled Edge.

PER PACKAGE OF 25.					
$3\frac{1}{4} \times 4\frac{1}{4}$,	-	-	\$0.25	5 x 7,	\$0.50
4 x 5,	-	-	30	5 x 8,	55
Cabinet,	-	-	30	$6\frac{1}{2} \times 8\frac{1}{2}$,	80
$4\frac{1}{4} \times 6\frac{1}{2}$ or Stereoscopic,	-	-	45	8 x 10,	1.00

No. 4—Unenameled, Narrow Embossed Border, Assorted Colors, White, Primrose, Pearl, Gray and Rose.

4 x 5, per package of 25,	-	-	-	-	\$0.35
---------------------------	---	---	---	---	--------

No. 5—Unenameled, Wide Embossed Border, Assorted Colors, White, Primrose, Pearl, Gray and Rose.

4 x 5, per dozen,	-	-	\$0.25	5 x 7, per dozen,	\$0.45
-------------------	---	---	--------	-------------------	--------

Chemicals.

Carlton's Aristo Toning and Fixing Solution,	8 oz. bottle, \$0.40 ; 16 oz. bottle, \$0.75
Carlton's Intensifier,	4 oz. " 25 ; 8 oz. " 40
Carlton's Negative Varnish,	4 oz. " 30 ; 8 oz. " 50
Hypo-Sulphite Soda, (1 lb. box),	- - - each, 10
" " (5 lb. box),	- - - " 40
Pyrogallie Acid,	- - - per ounce, 50
Hydrochinon,	- - - " " 50
Eikonogen,	- - - " " 50
Meta Bisulphite of Potash,	- - - " " 35
Carbonate of Soda,	- - - per pound, 15
Carbonate of Potash,	- - - " " 25
Sulphite of Soda,	- - - " " 25
Chloride of Gold (15 grain bottle),	- - - each, 75
Acetate of Soda (2 oz. bottle),	- - - " 20
Bromide Ammonia,	- - - per ounce, 15
Sulpho-Cyanide of Ammonia,	- - - " " 20
Bi Carbonate of Soda,	- - - " " 5
Borax,	- - - " " 5
Tungstate of Soda,	- - - " " 15
Chloride of Lime,	- - - " " 5
Magnesium Powder,	- - - " " 50

General Premo Accessories.

PRINTING FRAMES.				FLASH LAMPS.			
3¼ x 4¼	-	-	-	\$0.40	Perfection,	-	\$2.00
4 x 5	-	-	-	40	Hemperley,	-	2.75
5 x 7	-	-	-	50	BRISTLE BRUSHES.		
6½ x 8½	-	-	-	60	1-inch wide,	-	15
8 x 10	-	-	-	75	1½-in. "	-	20
GLASS GRADUATES.					2-inch "	-	25
Minim,	-	-	-	25	CAMELS HAIR BRUSHES.		
1 oz.,	-	-	-	20	1-inch wide,	-	25
2 oz.,	-	-	-	25	1½-in. "	-	40
4 oz.,	-	-	-	30	2-inch "	-	50
8 oz.,	-	-	-	40	CREAM PASTE.		
12 oz.	-	-	-	55	¼-pint jar,	-	20
FLUTED GLASS FUNNELS.					½ " "	-	25
½ pint,	-	-	-	15	1 " "	-	35
1 "	-	-	-	20	Negative Rack,	-	40
1 quart,	-	-	-	30	Ferrotypes Plates, for drying Aristotype		
2 "	-	-	-	45	and other papers with glossy surface,		
POCKET SCALES.					each,	-	15
5-inch beam,	-	-	-	60	Roller Squeegee, 6-inch,	-	1.00
6-inch "	-	-	-	75	1 dozen Blotting Paper, 9 x 12,	-	25

Terms.

• •

Prices given are net, no charge for boxing or cartage.

We prefer that remittances be made by Draft on New York, Post Office Money Order, Express or Registered Letter. If check is sent, fifteen cents must be added for cost of exchange.

Persons unknown to us, desiring goods sent C. O. D., must remit one-quarter the cost with the order. The goods will then be sent by express, with the privilege of inspection; should they not be kept, we will return the amount of remittance, less express charges.

Orders for shipment by freight must be accompanied by full amount of invoice.

We pack all goods with the utmost care, and will guarantee their safe arrival when sent by freight or express.

Small parcels, which do not contain glass, can be sent by mail if desired, but *must be sent at risk of purchaser*. In ordering goods sent by mail, postage *must be enclosed*; otherwise they will be sent by express.

In ordering please state how to ship. Should this be omitted, we will use our own discretion.



PREMOS PRODUCE PERFECT PICTURES.

LP 1143