



SUNART PHOTO CO



1898



ROCHESTER, N.Y.

TERMS.

++

Prices quoted herein are NET.

C. O. D. orders must be accompanied by a sufficient advance payment to cover express charges both ways. If no directions are given how to ship we will use our discretion. Goods carefully packed F. O. B. Rochester.

Mail orders must be accompanied by sufficient postage to cover mailing, also full amount of invoice. We assume no risks on goods sent by mail.

Freight orders must be accompanied by full amount of invoice.

Our goods are guaranteed and are listed at the lowest price that can honestly be made upon first-class, high grade work, which reputation our many years of business dealings has rightfully given us.

LP1036

Catalogue and Price Lists



SUNART PHOTO CO.

ROCHESTER, N. Y., U. S. A.

1898

MANUFACTURERS OF

Magazine Cameras

Folding Cameras

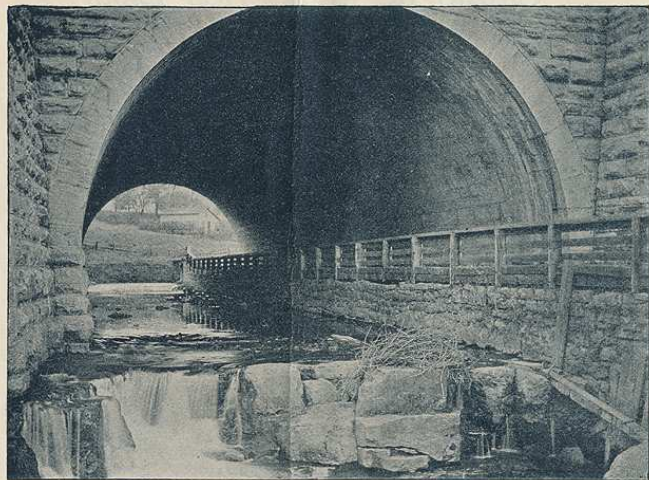
Bicycle Cameras

Tripods

Apparatus and

Photographic Supplies





To Our Patrons.



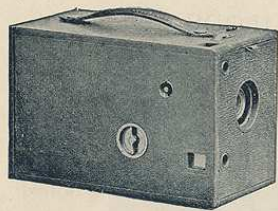
IF we can have but one—your respect or your business—we prefer the former, though we desire both.

Our factory is not "the largest," but is fully equipped with the most modern machinery, and employing only skilled and careful workmen, our products tell their own story. We have honest competitors, and to insist that we have the only first-class instruments would be taxing your credulity. We do claim (and this can be substantiated by a personal inspection) that for high grade workmanship, excellence of finish and general utility, our instruments are unexcelled. Our aim is not quantity but quality, and we endeavor to keep abreast of the times and to be accurately informed of the trend of improvements along the lines of photographic apparatus. The hundreds of SUNART CAMERAS in use by the leading amateurs and professionals are standing testimonials of their sterling merit.

In this age of progressive art—and there is art in photography—to do good work a first-class instrument is required, and such will be found in the products of

Yours respectfully,

SUNART PHOTO CO.



Magazine Cameras.

These cameras are particularly adapted for the use of tourists or where a number of negatives are desired without the additional weight of glass plates.

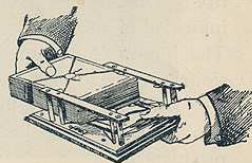
For many years manufacturers of photographic apparatus have spent time and money endeavoring to perfect in a simplified form a camera which would utilize cut sheet film, but until the SUNART MAGAZINE CAMERA was invented nothing practical was achieved. We worked on other lines,

and for several years the SUNART has proven to many that for simplicity, scientific mechanical construction and high grade workmanship we have accomplished the long desired results, *i.e.* a magazine camera which will work every time, with nothing to get out of order. In fact, "so simple a child can operate it," commending itself to all.

The following is a brief description of this camera and its manipulation.

The SUNART is made for pictures 4x5 only, as experience demonstrates that cut sheet film will not lie perfectly flat in larger sizes.

The case is of well-seasoned mahogany, the front being highly polished, and the outside neatly covered with morocco grain leather, with convenient handle for carrying. Two view Finders and two Tripod Screw Sockets for either vertical or horizontal pictures. The Focusing is done with



an aluminum wheel which has a scale marked upon its periphery from six up to one hundred feet.

The Lens is a Bausch & Lomb with wonderful depth of focus, fully covering a 4 x 5 plate.

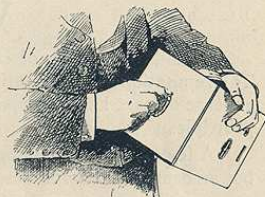
The Shutter, a marvel of ingenuity, is operated with a small lever.

The Loading of twenty-four films is exceedingly simple (*see illustration*). The Film being in carriers there is nothing to do but to insert them in the holder.

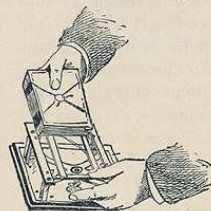
After the exposure is made the film falls to the

bottom of the camera, and the septum at the back prevents any possibility of light again striking the exposed film, which is locked, preventing scratching or moving around in the camera.

This instrument will work, and will work practically, and the many testimonials of its efficiency prove it is all we claim for it.



Turning down Exposed Film.



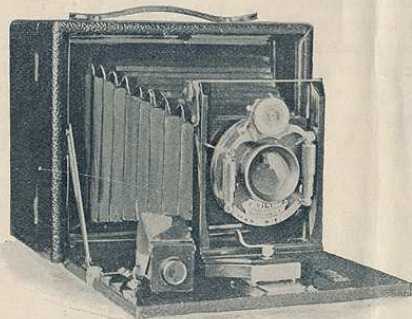
PRICES.

SUNART MAGAZINE CAMERA complete as per above description,	\$35.00
Film, loaded in packages of twenty-four,	1.80
Leather covered Carrying Case with shoulder strap,	2.50
Sole Leather Carrying Case with shoulder strap,	3.00

Vici Folding Cameras.

Of the many styles of cameras which we manufacture, the "VICI" are the leaders. The reputation already attained for these popular instruments is due to the fact that no expense or care has been spared in equipping them with the latest scientific mechanical principles.

A few pages in a catalogue are entirely inadequate to give a complete description, but an examination will convince the most sceptical that our products are unequalled.



The VICI cases are made from fine grain, well seasoned mahogany, susceptible of an exceedingly high polish, neatly covered with morocco grain leather, and when closed presents a neat and convenient carrying case with handle, although an extra carrying case with shoulder strap can be used to protect the instrument from wear.

When opened (by pressing a spring), its symmetrical appearance cannot fail to appeal to the artistic eye. The Cone Bellows is carefully made, the corners not showing the

folding marks so common with even high grade instruments. The Bed is handsomely polished, and has, through the centre, the Brass Guides and Front Focus Extension. All brass work is highly buffed and lacquered, oval head screws being used wherever practicable. The Focus is regulated by a Cam movement as well as Rack and Pinion, the bed extending to permit the use of a very long focus Lens. In the $6\frac{1}{2} \times 8\frac{1}{2}$ the Bed is hinged to drop down for the use of Wide Angle Lens.

The Front has Rising, Lowering and Sliding movement, carrying with it the Bellows, so by no possibility can the corners of the plate be cut off.

The Finder is reversible, having a metal hood which serves as a shade when in use. The bed is supported by two side braces upon which phosphor bronze springs for throwing down the bed act directly instead of, as usual, upon the polished surface.

Both Vertical and Horizontal Swings working from the centre which is optically correct, are locked with a cam which permits of the finest adjustment. The Ground Glass is Spring-Actuated and Removable for the use of Roll Holder. Space at the back for carrying three Double Plate Holders or Roll Holder, and large back door for focusing, or the Focusing Scale will be found accurate. Two Tripod Screw Sockets for either vertical or horizontal pictures.

The Lenses are VICI Rapid Rectilinear especially manufactured for us by Bausch & Lomb Optical Co., and will be found second to none, although higher priced lenses manufactured by this same Company can be supplied (*see price list*), or, in fact, any make of lens desired.

The Shutters are the latest improved VICI, noiselessly working between the lenses, and being Safety Shutter, can be set without exposing the plate. For full description of Shutter see page 47.

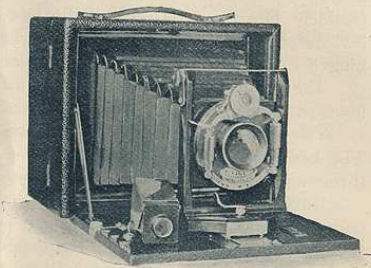
Sunart Vici Special.

The SUNART VICI SPECIAL embodies the highest grade of finish that skillful workmen can produce. The Lens is Zeiss Anastigmat, Series IIa, which, in conjunction with the Bausch & Lomb Iris Diaphragm Shutter, commend themselves.

The Lens is absolutely free from astigmatism, exceedingly speedy, and cuts sharply to the extreme edge of the plate, with an angle of about 80 degrees; flatness of field combined with great depth of focus, can be used for portraiture as well as for view work or copying.

The Camera is equipped with all the mechanical devices used in photography, such as Double Swing Back, Rack and Pinion Focusing Movement, Extension Bed, Rising, Lowering and Sliding Front, Spring Actuated Ground Glass, Reversible Hooded Finder, etc., in fact, a genuinely practical instrument for amateur or professional use.

The price includes Camera, complete, with Zeiss Anastigmat Lens, Series IIa, Iris Diaphragm Shutter, and one Double Plate Holder.



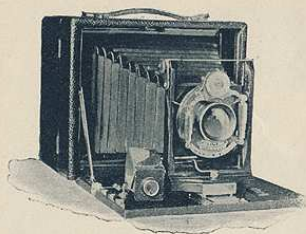
PRICES.

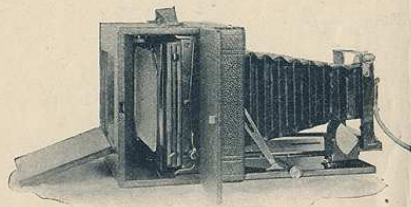
	6½ x 8½	5 x 7	4 x 5
SUNART VICI SPECIAL,	\$103.00	\$84.00	* \$67.00
Extra Plate Holders,	1.50	1.25	1.00
Roll Holder (not loaded),		12.50	10.00
Roll Film,		54 exp., 6.00	48 exp., 3.00
Leather Covered Carrying Case with shoulder strap,	3.50	3.00	2.50

*The 4 x 5 Camera is fitted with Zeiss II.

Sunart Vici.

It must not be understood from the description in the foregoing pages that the VICI is in any way inferior in workmanship. The only difference between the VICI and VICI SPECIAL is in the lens and shutter, the camera construction being identical. Finely finished mahogany, Rack and Pinion Focusing Movement, Extension Bed, Raising, Lowering and Sliding Front, Double Swing Back, Spring Actuated Ground Glass, Hooded Finder, two Tripod Screw Sockets for either vertical or horizontal pictures, etc., etc.





Showing Extended Bed.

Iris Diaphragm, Retarding Device, Pneumatic and Finger Release.
 The price includes Camera, Lens, Shutter, and one double Plate Holder.

PRICES.

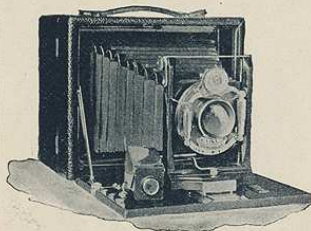
	6½ x 8½	5 x 7	4 x 5
SUNART VICI (with VICI Shutter), . .	\$50.00	\$40.00	\$30.00
SUNART VICI (with B. & L. Iris Diaph shutter),	60.00	50.00	40.00
Extra Plate Holders,	1.50	1.25	1.00
Wide Angle Lens,	15.00	12.50	10.00
Roll Holder,		12.50	10.00
Leather Covered Carrying Case with shoulder strap,	3.50	3.00	2.50

The lens, a VICI Rapid Rectilinear, made for us by the Bausch & Lomb Optical Co., so mounted in the shutter that it can be removed and VICI Wide Angle lens substituted, the lenses being interchangeable.

The shutter is the '98 model VICI Safety Shutter (*for description see page 47*). The blades working between the lenses with a variation of speed, equipped with



MADE WITH A 5 x 7 VICI.



Sunart Vici No. 1.

While Vici No. 1 has heretofore held its own, this is an age of improvement, and all the essential features of a first-class instrument are embodied in this Camera.

The Lens, a Vici Rapid Rectilinear, with Vici '98 model Safety Shutter, Iris Diaphragm, Retarding Device, Pneumatic and Finger Release; the Lens being interchangeable with the Vici Wide Angle.

The Camera is equipped with Rack and Pinion focusing movement, Extension Front, which will permit focusing at very close range, for copying purposes; the Swing at back working from centre which is optically correct, operated with a Cam movement permitting the finest adjustment. The Ground Glass is spring actuated and removable for Roll-Holder, large Panel Door for focusing, showing full sized view upon the ground glass. Focus Scale, which will be found correct, can be used from six feet up to any distance. Space at back for three Double Plate Holders, as is the case in all Vici cameras. In fact a first-class, thoroughly practical instrument, at a moderate price, including Camera, Lens, Shutter, and one Double Plate Holder.

PRICES.

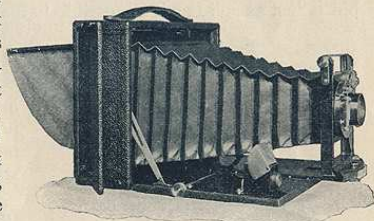
	5 x 7	4 x 5
SUNART VICI NO. 1,	\$33.00	\$25.00
Extra Plate Holders,	1.25	1.00
Wide Angle Lens,	12.00	10.00
Roll Holder,	12.50	10.00
Leather Covered Carrying Case, with Shoulder Strap,	3.00	2.50

Sunart Cycle Vici.

For sportsmen, cyclists, tourists, and the public generally, this instrument is the most popular, owing to its compactness and its extreme simplicity.

Embracing all the practical features of our regular cameras, made of fine grain mahogany, highly polished and neatly covered with morocco grain leather, focused with Rack and Pinion, has Extension Bed for long focus Lens, Raising, Lowering and Side Sliding Movements, Hooded Finder, two Side Braces; in fact the front is Vici. The back is something entirely new and up-to-date, being Spring Actuated and Removable. Upon touching a spring, the Back Door flies open, carrying with it Side Curtains, thus obviating the use of focusing cloth, at the same time shielding the Ground Glass from breakage. The Curtains are so folded that by simply closing the door, which is flush with the back of the Camera, they fall into place. When sliding the Plate Holder into position an ingenious spring catch holds the back and ground glass firmly. The Swing is easily operated, working from the centre as is usual in Sunart instruments.

The Camera is equipped with two Tripod Screw Sockets, in which a Bicycle Clamp can be inserted, and by clamping to the handle bars the bicycle answers the purpose of a tripod, for time exposures.



The lens, a Vici Rapid Rectilinear fitted with Vici Shutter, having Retarding Device Pneumatic and Finger Release, Iris Diaphragm, etc.

A Carrying Case, with Shoulder Strap, is included with this instrument, the Camera fitting into one end of the Case and six double Plate Holders, or one Plate Holder and Roll Holder for forty-eight exposures, in the other.

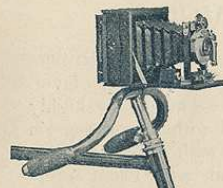
Although this Camera is so exceedingly compact and light, it is not in any way frail, but is just as solid as it is possible to make an instrument of this description.

A particular feature with the Cycle Camera is its simplicity and it is a fact, that in time all Springs will more or less set. The Springs in these instruments are so arranged that they can be adjusted at any time and brought back to the original tension, requiring no great mechanical skill, to adjust same.

Price, complete with Lens, Shutter, one Double Plate Holder, and Carrying Case with Shoulder Strap.



	PRICES.		
	6½ x 8½	6 x 7	4 x 5
SUNART CYCLE VICI,	\$48.00	\$38.00	\$28.00
Extra Plate Holders,	1.50	1.25	1.00
Wide Angle Lens,	25.00	12.00	10.00
Roll Holder,		12.50	10.00
Bicycle Clamp,	1.00	1.00	1.00



Using the Bicycle as a Tripod.

Sunart Cycle Vici No. 1.

This instrument is still more compact than the Cycle Vici but equally rigid in every respect.

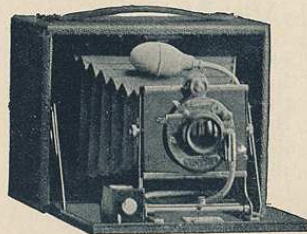
The Case is fine grain mahogany, nicely finished, Rack and Pinion adjustment for Focusing, Raising, Lowering and Sliding Front, Hooded Finder, and two Side Braces for holding the bed firmly, constructed almost identically with the regular Vici Front.

The Back is Spring Actuated and easily Removable for Roll Holder. Metal Ways for holding the Plate Holder, Roll Holder or Ground Glass extend the entire length of top and bottom of Camera. The Back Door for focusing operates exactly as on the Cycle Vici, having Side Curtains for shields, and the ground glass (which is very nearly the full size), being thus protected the possibility of breakage is lessened.

The Lens, a Vici Rapid Rectilinear fitted with Sunart Vici Safety Shutter, Pneumatic and Finger Release, Iris Diaphragm, Retarding Device, etc.

Price including Camera complete with Lens, Shutter, one Double Plate Holder and Carrying Case with Shoulder Strap.

	PRICES.	
	5 x 7	4 x 5
SUNART CYCLE VICI No. 1,	\$32.00	\$25.00
Extra Plate Holders,	1.25	1.00
Wide Angle Lens,	12.00	10.00
Roll Holder,	12.50	10.00
Bicycle Clamp,	1.00	1.00



Sunart Vidi.

The Sunart Vidi is constructed on similar lines to the Vici with which it will compare very favorably. Made of carefully selected mahogany, highly polished and neatly covered with morocco grain leather, the Focus operated with a Central Slide locked with a Cam which renders the Front exceptionally rigid, has Rising, Falling and Sliding movements, carrying with it the Bellows, thus obviating any possibility of the Lens cutting off the corners

of the plate. The Swing operating from the back, easily adjusted at any position; Ground Glass Spring Actuated and Removable for use of a Roll Holder, Large Panel Door at the back for focusing, Reversible View Finder, two Tripod Screw Sockets for either vertical or horizontal pictures.

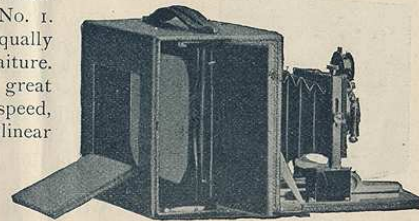
The Lens a Vici Rapid Rectilinear and Vici '98 model Safety Shutter with Iris Diaphragm, Pneumatic and Finger Release.

An instrument built upon honor, complete with Lens, Shutter, and one double Plate Holder.

	PRICES.	
	5 x 7	4 x 5
SUNART VIDİ,	\$30.00	\$22.00
Extra Plate Holders,	1.25	1.00
Roll Holder,	12.50	10.00
Wide Angle Lens, extra,	12.00	10.00
Leather Covered Carrying Case with Shoulder Strap,	3.00	2.50

Sunart Vidi No. 1.

The demand for a Camera at a more moderate price has been met with the Vidi No. 1. It is a thoroughly well made instrument, equally well adapted for landscape or portraiture. Fitted with an Achromatic Lens having great covering capacity, depth of focus and speed, nearly or quite, equal to the Rapid Rectilinear type, the only difference being it is not absolutely rectilinear, but in landscape views this is not noticeable. The Shutter is the '98 model Vici Safety Shutter having Pneumatic and Finger Release and Iris Diaphragm.

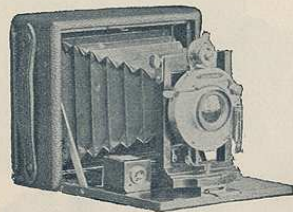


The case is of mahogany handsomely polished, the brass work highly buffed and lacquered, equal in workmanship and finish to the cameras described in the foregoing pages. The swing working from the center identical with the VIDİ.

The Price includes Camera, Lens, Shutter, and one Double Plate Holder.

	PRICES.	
	5 x 7	4 x 5
SUNART VIDİ NO. 1,	\$23.00	\$16.00
Extra Plate Holders,	1.25	1.00
Roll Holder,	12.50	10.00
Leather Covered Carrying Case with Shoulder Strap,	3.00	2.50

Sunart Cycle Vidi.



This instrument is still more compact than the CYCLE VICI, but equally rigid. Has Raising, Lowering and Sliding Front, drawing out for focusing and locking with a cam, the Bed supported with two braces; Hooded Finder adjustable for either horizontal or perpendicular pictures, and two Tripod Screw Sockets.

The Back is spring actuated and removable for use of Roll Holder, with Side Curtains identical with the CYCLE VICI. The metal Ways for holding the Ground Glass or Plate Holder, extending the entire length of top and bottom of camera, and by their rigidity holding the Plate or Roll Holder firmly in position. The compactness and practicability of these instruments are noticeable features.

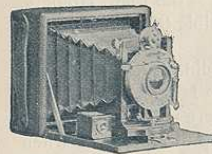
The Lens, a Rapid Rectilinear, with VIDI Shutter. The only difference between the VIDI and VICI Shutters is, the VIDI is not equipped with Retarding Device.

Price, includes Camera, Lens, Shutter, one Double Plate Holder, and Carrying Case with Shoulder Strap.

PRICES.

	5 × 7	4 × 5
SUNART CYCLE VIDI,	\$30.00	\$22.00
Extra Plate Holders,	1.25	1.00
Roll Holder (for 48 exp.),	12.50	10.00
Bicycle Clamp,	1.00	1.00

Sunart Cycle Vidi No. 1.



Built upon exactly the same lines as the CYCLE VIDI, with Rising, Lowering and Side Sliding Front, two Side Braces, Reversible Finder, adjustable for either horizontal or perpendicular pictures, two Tripod Screw Sockets, etc. In fact, the camera is identical with the CYCLE VIDI, except being fitted with an Achromatic Lens, the same type as is supplied with our regular VIDI No. 1. The Shutter is the VIDI Safety Shutter with

Pneumatic Release and Iris Diaphragm. All wood work highly polished with lacquered Brass trimmings.

The Back is Spring Actuated and Removable, Door flying open carrying with it Side Curtains for focusing upon Ground Glass.

Price includes Camera, Lens, Shutter, and one Double Plate Holder.

PRICES.

	5 × 7	4 × 5
SUNART CYCLE VIDI No. 1,	\$23.00	\$16.00
Extra Plate Holders,	1.25	1.00
Roll Holder,	12.50	10.00
Bicycle Clamp,	1.00	1.00
Leather Covered Carrying Case with Shoulder Strap for camera, and four or six plate holders,	3.00	2.50

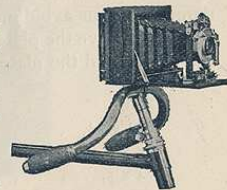


Plate Holders.

The most essential thing, next to a first-class Camera and Lens, is the Plate Holders. The "SUNART" Plate Holders are as light and compact as it is possible to make a double Plate Holder, consistent with strength and durability.

The sensitive dry plate is loaded by drawing the hard rubber slide and pressing the end of the plate on the phosphor bronze spring in the bottom of the Holder, and a slight pressure on the end of the plate slides same easily into place, where it is held securely by the spring pressing the plate against the Beveled Edge at the top of Holder, so when using either a thick or thin plate it is always in the focal plane. There are no double plate holders upon the market which can be loaded or unloaded more easily.

The Hard Rubber Slides are prevented from being accidentally drawn out by a Brass Catch, and in the larger Holders there is a small piece of wood in the middle, thus preventing the accident so common, of breaking the Head off the Slides in pulling out.

The Hard Rubber Slides with which they are equipped will be appreciated by users of card board slides, inasmuch as the ends will not split and that they are not affected by dampness, thus avoiding warpage.

To remove the plate from the holder, simply press the Phosphor Bronze Spring with the thumb and the plate will drop out.

PRICES.

6½ x 8½,	\$1.50
5 x 7,	1.25
4 x 5,	1.00

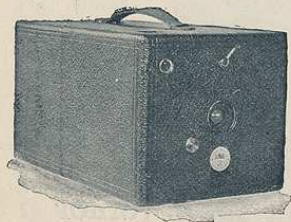
Sunart
Junior



EXACT SIZE OF PICTURE, 3¼ x 3¼ INCHES.

.. AND ..
Junior
No. 1.

SUNART JUNIORS.



How frequently we hear the remark, "I wonder if I could take pictures." The doubt is there, and the expenditure of twenty or thirty dollars for a camera often prevents one from engaging in this fascinating art. Our claim, "SO SIMPLE, A CHILD CAN OPERATE IT," is exemplified in the SUNART JUNIORS.

Although the price is exceedingly moderate, these Instruments are as carefully constructed as the higher priced Cameras, and the resulting negative is surprising, almost as good pictures being taken as with more expensive apparatus, only smaller.

The Lens is Achromatic, with Fixed Focus of sufficient length to prevent distortion, and does not require focusing, cutting the image perfectly sharp from eight feet up to any distance.

The Shutter is simplicity itself, working for either Time or Instantaneous, and being a Safety Shutter, sets without exposing the plate. Something entirely novel in a Shutter of this description, is the Quick Time Exposure which can be regulated by the pressure applied, or, by a slight pressure of the Button the Shutter will remain open until again pressed. These are new features in low priced Shutters. The Finders are carefully focused and dust proof, and, being square, show the view exactly as upon the plate.

Sunart Junior.

The SUNART JUNIOR takes a square picture, $3\frac{1}{2} \times 3\frac{1}{2}$ inches, but by holding the camera diagonally very pretty effects can be obtained (*see illustration*).



REDUCED.



REDUCED.

The dimensions of the Junior are $4\frac{1}{2} \times 4\frac{1}{2} \times 8$ inches, with space at the back for carrying six Double Plate Holders or twelve plates; weighs $1\frac{1}{4}$ pounds; fitted with Tripod Screw Socket, neatly covered with morocco grain leather, with convenient Handle.

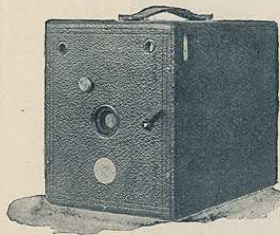
PRICES.

SUNART JUNIOR, including one Double Plate Holder,	\$5.00
Extra Plate Holders,	1.00
Leather Covered Carrying Case, with Shoulder Strap,	2.25



MADE WITH THE SUNART JUNIOR.

Sunart Junior No. 1.



The SUNART JUNIOR No. 1 is built upon the same lines as the Junior, taking a picture $3\frac{1}{4} \times 4\frac{1}{4}$ inches; equipped with two Tripod Screw Sockets and two View Finders showing the view in exactly the same proportion as upon the plate, for horizontal or vertical pictures. The space at back carries three Double Plate Holders, holding six plates. Case neatly covered with morocco grain leather, with Handle for carrying. Dimensions, $4\frac{1}{2} \times 5\frac{1}{2} \times 7$ inches.

The Lens and Shutter are identically the same as the Junior, with the exception that the Shutter is fitted with a set of Diaphragms with Three Openings, operated by pulling out a Catch at the side.

PRICES.

SUNART JUNIOR No. 1, including one Double Plate Holder,	\$5.00
Extra Plate Holders,	1.00
Leather Covered Carrying Case, with Shoulder Strap,	2.00



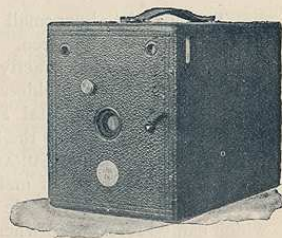
EXACT SIZE SUNART JUNIOR No. 1. $3\frac{1}{4} \times 3\frac{1}{4}$. INSTANTANEOUS.

Sunart Junior and Junior No. 1 SPECIALS.

Although the lens supplied with either the Junior or Junior No. 1 Cameras are exceedingly fine for the price listed, still the price of a Instrument is almost invariably determined by the quality of the Lens. The SUNART JUNIOR and JUNIOR No. 1 SPECIAL only differ in this respect from the regular Juniors,—the Shutter, Case, and all adjustments being identical. The Lens is a Double Combination Rapid Rectilinear, of great depth of focus, flatness of field and covering capacity.

These Cameras can also be equipped with Zeiss Anastigmat Lens, and we have listed these instruments as low as is possible consistent with the quality of the goods furnished.

For those desiring a small instrument first class in every respect we highly recommend the JUNIOR equipped as above.



PRICES.

SUNART JUNIOR or JUNIOR No. 1 SPECIAL (fitted with Rapid Rectilinear Lens),	\$12.00
SUNART JUNIOR or JUNIOR No. 1 SPECIAL (fitted with Zeiss Anastigmat lens and Iris Diaphragm),	30.00

Junior Plate Holders.

To appreciate how small a thoroughly practical Holder can be made these Double Plate Holders must be seen.

They are loaded exactly as the regular "SUNART" holders, and are so compact and light that extra Holders can easily be carried in the pocket. Fitted with Hard Rubber Slides, with Metal Top, locked by an ingenious Catch to prevent accidental opening. Upon one side the Slides are smooth and after making the exposure they are reversed and the name SUNART JUNIOR or SUNART JUNIOR No. 1 is etched, thus preventing any possibility of making two exposures upon one plate. Another convenience is that upon the etched side a memorandum may be written with an ordinary pencil, which can be referred to when the plates are developed.

One of the most valuable qualities of the SUNART Plate Holders is that the plate is cut off but one-eighth inch at the bottom, the sides showing the full width of the plate.

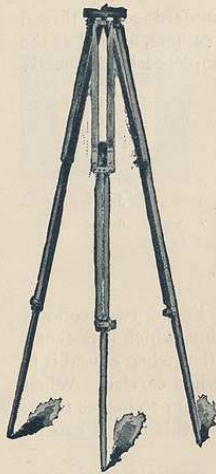
PRICES.

JUNIOR,	3½ x 3½	\$1.00
JR., No. 1,	3½ x 4½	1.00

Sunart Tripods.

COMPACT TRIPODS

are made in three sizes of straight grained spruce, carefully selected for strength and thoroughly seasoned by age, as well as kiln dried, thus avoiding brittleness. They are made in three sections (*see illustration*), the top joint folding against the middle section and the lower joint with its steel pointed tip sliding into the middle section, making, when folded, a compact tripod less than two feet long, and when set up forming a perfectly rigid and firm support which can be adjusted from three feet up to four and one-half feet high. The sliding section enables the tripod to be leveled on uneven ground or a side hill. One of the features of this tripod which overcomes a great annoyance is, when desirous of moving the tripod with the camera attached, the legs can be grasped when carrying the camera on the shoulder without fear of the legs coming away from the tripod top, an ingenious arrangement of the pin locking the legs firmly in their place until desired to take apart. The tripod is tipped with buffed and lacquered brass wherever necessary for strength and



wear. The top is made of three pieces of cherry glued against the grain to prevent any possibility of warpage, and neatly covered with soft cloth to prevent marring the camera. The tripod screw is fastened in the top.



finished in the natural wood and is well

We use a special standard screw thread which will fit any make of camera, as well as the SUNART cameras. The complete tripod is neatly put up.

PRICES.

No. 1 for 4 x 5 or 5 x 7 cameras,	\$3.00
No. 2 for 5 x 7 or 6½ x 8½,	3.50
No. 3 for 6½ x 8½ or 8 x 10,	4.00

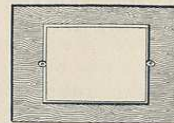
No. 1 SPECIAL TRIPOD.

The No. 1 Special Tripod is made from straight grain Spruce, having two sections, the lower section with its steel pointed tip sliding into the top section, which is fastened to a metal top or head. The outside edges are nicely rounded, so that when closed it is exceedingly compact, and presents no sharp corners to the hand when carried. When closed, 29 inches long, and when extended 54 inches high, adjustable from 29 inches to 54. Is strong and light, weighing 21 ounces. Being exceptionally rigid this tripod can be used for a 5 x 7 or even a 6½ x 8½ camera.

All SUNART tripods are fitted with Universal screw that will fit any Folding Camera upon the market.

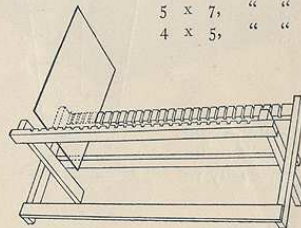
Price, \$2.00

Inside Dry Plate Kits.



It frequently happens that with a large camera, one desires to take a smaller view or a copy for lantern slide use; the kit is designed for that purpose. They nest into one another from the larger size down to the smaller, or separate openings can be made for each size. If one wanted to take a cabinet size portrait and did not care to use a 6½ x 8½ plate, slip a kit in the plate holder, the desired size, fitting into the plate holder the same as the plate.

To fit holders.	Size of opening.	Each.
8 x 10 down to	6½ x 8½, 5 x 7, 4 x 5,	\$.40
6½ x 8½ " "	5 x 7, 4 x 5, 3½ x 4½,35
5 x 7, " "	4 x 5, 3½ x 4½,30
4 x 5, " "	3½ x 4½,25



Sunart Negative Racks.

Made of thoroughly seasoned Cherry, well oiled to prevent swelling. Folding up compactly when not in use, and when open permits the insertion for drying of twenty-four glass negatives.

PRICE, \$.25

Sunart Printing Frames.

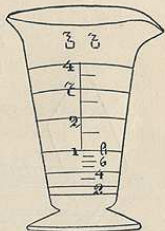
Of well seasoned Cherry, carefully dove-tailed; guaranteed not to warp. They are very light, but perfectly rigid. The springs are buffed and work on a washer. Having no ears, they can be piled upon one another without danger of marring.

PRICES.

3½ x 3½,	\$0.25
3½ x 4½,25
4 x 5,30

Graduates.

Minim,	\$0.25
2 Ounce,20
4 Ounce,30



Pure Rubber Finger Tips.

A perfect protection and relief for the fingers. For use in developing, to prevent discoloration of the nails or fingers from acids or chemicals. Very easily removed, in fact fitting like a glove.



Price, in sets of three, 15 cents.

Developing Trays.

These goods are not dipped or coated on the outside, but are moulded from a plastic, fibrous material, and are without seam or joint. They are black, smooth and durable, and are guaranteed to be alkali or acid proof. The trays are actually larger than listed, and as we give the regular size of plate, there is ample room for inserting the fingers to lift the plate, as an illustration the 4 x 5 tray measures 4¼ x 5½ inches. The price is exceedingly moderate, and we have no hesitancy in highly recommending these goods as a first class article for the money.



Deep.



Shallow.

PRICES.

	Shallow.	Deep.
3½ x 4½,	\$0.25	—
4 x 5,30	\$0.50
5 x 8,60	.70
6½ x 8½,75	.85
8 x 10,	1.10	1.15
10 x 12,	—	1.75
11 x 14,	—	2.40

Sunart Pyro Developer (concentrated).

This developer is especially adapted for all the leading makes of dry plates, and is of good keeping quality.

PRICE, 8 oz. Bottles, \$.50

Sunart Toning Solution.

For use with all aristo papers. All ready for use, having the necessary chemicals with the gold, and is a combined toning and fixing solution.

Put up in 8 oz. bottles (will tone 50 4 x 5 prints). Price, \$.50

Toning Tablets (Dry).

One box of 16 Tablets—making 16 oz. of Toning Solution, \$.25

Sunart Paste.

For mounting photographic prints; is entirely free from deleterious substances.

Put up in screw top glass jars. Price, \$.25

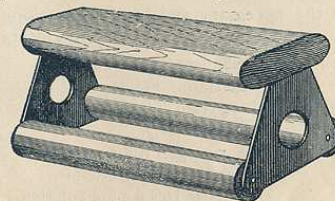
Bicycle Clamps.

For wheelmen the Bicycle Clamp is easily adjusted to the handle bars, the wheel taking the place of a tripod fits any wheel, is light made of brass nickered, fits all cameras.

PRICE, \$1.00

Ferrotypes Plates.

For imparting a very glossy finish to prints without the aid of a burnisher, simply squeegee the wet print into contact with the highly polished surface of the plate. Cannot be sent by mail, and unless ordered in quantities or with other goods, order must include fifteen cents extra for packing.



PRICES.

10 x 14,	Thin,	\$.20
10 x 14,	Medium,30
10 x 14,	Extra Heavy,40

Rubber Print Roller.

A fine quality of velvet rubber firmly set in a wooden handle.

PRICE, 5 inch, \$.25

Rubber Squeegee Roller.

6 inch double roller, \$1.00

Paste Brushes.

For mounting photographs, dusting plates and plate holders.

	Bristle.	Camels' Hair.
1 inch,10	.25
1½ inch,20	.40
2 inches,25	.50



Sunart Printing and Developing Outfit.

The chief charm in photography is in developing and finishing your own pictures, and for those who desire to do so these outfits are especially designed, comprising all the necessary articles for developing the negative and making the finished print. Put up in compact form. These Outfits consist of

- One Sunart Candle Lamp,
- One Printing Frame,
- Three Hard Fibre Trays,
- One Graduate,
- One package Printing Paper,
- One package Card Mounts,
- One bottle Developing Solution,
- One bottle Toning Solution,
- One bottle Mounting Paste,
- One Flat Paste Brush,
- One package Hyposulphite Soda.

PRICES.

- Outfit, complete,
for $3\frac{1}{2} \times 3\frac{1}{2}$ or
 $3\frac{1}{4} \times 4\frac{1}{4}$, . . . \$1.50
- Outfit, complete,
for 4×5 , . . . 2.00



Developing and Printing.

While as stated on the preceding page, the chief charm of photography is in developing and printing, still there are many who do not care to be bothered, but prefer to have it done for them by an expert.

Our Developing and Finishing department is equipped with all appliances for prompt and efficient work, and all orders will receive the utmost care and attention.

PRICE LIST FOR DEVELOPING AND PRINTING.

Size of Camera.	Developing, Printing and Mounting.	Developing Only.	Printing Only.
$3\frac{1}{2} \times 3\frac{1}{2}$	12 cents.	6 cents.	8 cents.
$3\frac{1}{4} \times 4\frac{1}{4}$	12 "	6 "	8 "
4×5	15 "	8 "	10 "
5×7	20 "	10 "	12 "
$6\frac{1}{2} \times 8\frac{1}{2}$	25 "	10 "	17 "

Failures due to fog or accident which cannot be determined until developed, charged at half-price.

Aristotype Printing Paper.

	Per Doz.
$3\frac{1}{2} \times 3\frac{1}{2}$,15
$3\frac{1}{4} \times 4\frac{1}{4}$,20
4×5 ,25
$3\frac{1}{4} \times 5\frac{1}{2}$, (Cabinets),25
5×7 ,35
$6\frac{1}{2} \times 8\frac{1}{2}$,55
8×10 ,75

Dry Plates.

All the leading brands of Dry Plates, Cramer's, Seed's, Cyclone, Record, etc.

	Per Doz.
3½ x 3½,40
3¼ x 4¼,45
4 x 5,65
5 x 7,	1.10
6½ x 8½,	1.65
3¼ x 4, Transparency Plates,70
Cover glass for Lantern slides,35
Masks and gummed strips for Lantern slides, per package,	.25

Card Mounts.

In presenting the following Card Mounts we have listed what, in our opinion, are the best for the general amateur use. The superior quality of these cards will commend themselves. We are continually adding new styles to our line which will be furnished upon application.

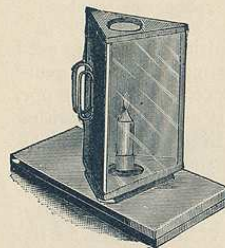
	ENAMELLED, EMBOSSED BORDER.	Per Doz.	Per 100.
5 x 5 for 3½ x 3½ prints,15	.85
4½ x 5½ " 3¼ x 4¼ "20	1.00
5½ x 6½ " 4 x 5 "25	1.20
7 x 9 " 5 x 7 "35	2.20

In ordering Mounts forwarded by mail, postage must accompany the order, the amount in addition to the list price of the different sizes is as follows, per dozen.

3½ x 3½,08
3¼ x 4¼,08
4 x 5,09
5 x 7,10

Sunart Candle Lamp.

The most essential thing in a dark room is a safe light. All red glass is not necessarily actinic. It should be what is called "copper flashed" to render it perfectly safe, or in the case of a Candle Lamp the paper should be of the quality which is absolutely actinic. This will be found in our compact Candle Lamp.

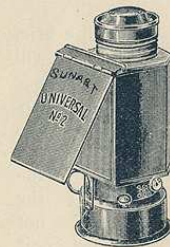


PRICE.

Including two small candles, \$0.25

Sunart Dark Room Lantern.

Made in two sizes, Nos. 1 and 2. In No. 2 the back is hinged to admit of cleaning and lighting. The lamps have perfect ventilation, and permit of turning up or lowering the wick from the outside. The No. 1 is equipped with ruby glass, the No. 2 with orange and ruby glass; both are fitted with adjustable shades, to throw the light where desired, at the same time shading the eyes.



PRICES.

Sunart Lantern No. 1, \$0.80
 Sunart Lantern No. 2, 1.00

Flash Light Photography.

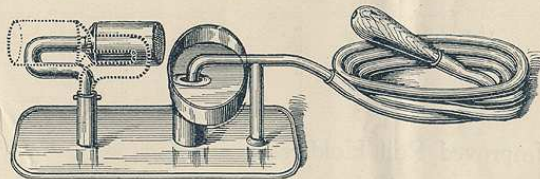
During the winter, when the cold, bleak winds are howling outside, the camera need not necessarily be laid away on the shelf, in fact many of the most beautiful genre pictures may be obtained indoors. The chief difficulty experienced with indoor portraiture is the modern house is not equipped with a skylight. Thus it is that flash light photography comes into place. It is very simple, and beautiful effects can be obtained by the use of this medium. Interiors, which through lack of illumination in daylight are impractical, groups of people around the dinner table, card parties, in fact thousands of subjects can be photographed just as clear and sharp as in open sunlight.

Although this is merely a catalogue, still a brief description of how to make flash light pictures will probably not prove amiss.

Set the camera upon some firm support, distribute the focus by focusing in the middle of the group, close the shutter and set for time exposure. The lights in the room need not be turned down, as the more lamp or gas light that does not shine directly into the lens the better, it



tends to soften the shadows. Above the camera, about two feet, and a foot or so back of it have the flash lamp placed, already loaded and the alcohol wick lit. Take the bulb of the flash lamp in the left hand, have your group ready (not looking directly into the lens), open the shutter, press the flash bulb, and immediately after the exposure close the shutter. The development, etc., is identical with daylight pictures.



Flash Lamp.

(For use with Sun Flash or any compound powder), \$1.25

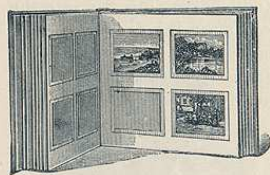
Aluminum Sun Flash Powder.

By the use of Aluminum, instead of Magnesium, the disagreeable odor of the latter has been entirely overcome. This powder has very little smoke and is rich in actinic qualities.

PRICES.

Sun Flash Powder, per ounce,	\$0.60
<i>Also put up in Cartridges, containing Six Full Charges of Powder and Fuse.</i>	
A, small package,25
B, medium package,40
C, large package,75

Photo Albums for Squeegee Prints.



3½ x 3½, holding 48 pictures,	\$1.00
3½ x 3½, " 96 "	1.50
3¼ x 4¼, " 48 "	1.00
3¼ x 4¼, " 96 "	1.50
4 x 5, " 48 "	1.25
5 x 7, " 48 "	1.50

Improved Roll Holders.

(EASTMAN'S.)

This Roll Holder embodies the latest improvements, the most important part of which is the intermittent marker, which marks the division between each exposure. The automatic tension keeping the film stretched flat and smooth, and always in focus. Spools and reels interchangeable. An automatic register counts the exposures. When ordering roll holders, specify whether for Regular or Cycle. We make no charge for fitting to SUNART cameras.

PRICES.

4 x 5 Roll Holder, for 48 exposures,	\$10.00
5 x 7 " " " 54 "	12.50
6½ x 8½ " " " 48 "	16.00

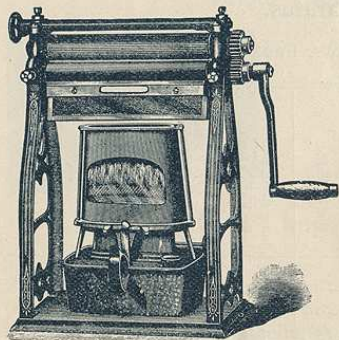


Extra Parts of Apparatus.

INCLUDING HOLDER SLIDES, TRIPOD SCREWS, FRONT BOARDS, ETC.

Size.	Hard Rubber (etched) Holder Slides.	Front Board for Vici Camera.	Front Board for Stereo Camera.	Ground Glass for Focusing Screen.	Tripod Screws.	Cone Bellows for Vici or Vidi.	Long Cone Bellows for Vici Camera.	Carrying Case for Camera.	Carrying Case for Cycle Vici and Six Plate Holders.	Tripod Clamp Screws.
3½ x 3½	\$0.25			\$0.12	\$0.30			\$2.25		\$0.25
3¼ x 4¼	.30			.12				2.00		
4 x 5	.35	\$0.25		.12		\$3.50	\$4.00	2.50	\$3.00	
4¼ x 6½	<small>not etched</small> .40		\$0.50	.15		3.75	4.25	2.50		
5 x 7	.45	.25		.18		4.00	4.50	3.00	3.50	
6½ x 8½	.50	.30		.20		4.50	5.00	3.00	4.50	

Flanges for VICI or VID I lenses,	\$0.75
Wood Tops for Compact Tripods,50
Milled Heads, with screw, for various purposes,25
Ruby Glass for Universal Lantern;10
Pneumatic Release, with bulb and tubing for Vici shutter,	2.00



Burnishers.

These Improved Rotary Burnisher are, without exception, the best Rotary Burnisher manufactured. Fitted with all adjustments necessary, and is thoroughly practical in every respect.

PRICES.

8 inch roll,		\$12.00
10 " " (light),		15.00
10 " " (heavy),		25.00
15 " "		30.00
20 " "		40.00
25 " "		55.00

Prices of other styles of burnishers furnished upon application.

Sunart Wide Angle Lenses.

These lenses have an angular aperture of 80° on the plate for which they are listed, but have an angle of about 90° on the next larger plate; the largest stop is *f* 16. They give good results, when used with suitable stops, on interior and architectural work.

Size of Plate.	Back Focus.	Equivalent Focus.	Price.
4 x 5	3 1/4 inches.	3 1/2 inches.	\$10.00
5 x 8	4 1/2 "	5 1/4 "	15.00
6 1/2 x 8 1/2	6 1/8 "	6 1/2 "	18.00

Sunart Rectilinear Lenses.

How many stop to consider, when purchasing a camera, the vital importance of having a first-class lens and shutter. The lenses used on all SUNART cameras are especially constructed to meet the requirement of a hand camera for instantaneous work. The well known reputation of the makers is such we guarantee our lenses.

Size of Plate.	Back Focus.	Price.
3 1/2 x 3 1/2	4 3/8 inches.	\$7.50
3 1/2 x 4 1/4	4 3/8 "	9.00
4 x 5	5 1/4 "	10.00
5 x 8	8 "	15.00
6 1/2 x 8 1/2	10 1/4 "	20.00

Rapid Universal Lenses. For Instantaneous Work.

(BAUSCH & LOMB OPTICAL CO.'S.)

For outdoor work they have an unusual crispness of definition, with full opening for instantaneous work and great covering capacity and depth. Ordinary instantaneous work can be made with this series of lenses, even without bright sunlight. These lenses have an angle averaging about 65°, they are supplied with Iris Diaphragm.

Large Stop Covers.	Diameter of Image Circle.	Diameter of Lenses.	Back Focus.	Equivalent Focus.	Price.
3 1/2 x 4 1/4	8 inches.	7/8 inches.	4 3/4 inches.	5 1/4 inches.	\$18.00
4 x 5	9 1/4 "	1 1/16 "	5 3/4 "	6 3/4 "	22.00
5 x 8	11 "	1 3/8 "	7 3/4 "	8 3/4 "	26.00
6 1/2 x 8 1/2	13 1/4 "	1 5/8 "	10 3/8 "	11 3/4 "	35.00

Anastigmat Lenses. Turner-Reich Anastigmat, F:7.5.

FOR PORTRAITS, GROUPS, INSTANTANEOUS OUTDOOR WORK AND COPYING.

The full opening of these lenses is F:7.5, and with that opening they will cut the size plate claimed.

No.	Equivalent Focus.	Plate covered sharply with Opening of			Price with Brass Mounting.	Price with Aluminum Mounting.
		F: 7.5.	F: 15.	F: 60.		
1	6 in.	4 x 5	5 x 7	5 x 8	\$35.00	\$38.00
2	7 $\frac{1}{4}$ "	5 x 7	5 x 8	6 $\frac{1}{2}$ x 8 $\frac{1}{2}$	40.00	44.00
3	8 $\frac{1}{2}$ "	5 x 8	6 $\frac{1}{2}$ x 8 $\frac{1}{2}$	8 x 10	50.00	55.00
4	10 $\frac{1}{2}$ "	6 $\frac{1}{2}$ x 8 $\frac{1}{2}$	8 x 10	10 x 12	75.00	80.00
5	12 "	8 x 10	10 x 12	11 x 14	85.00	90.00

Zeiss Anastigmat 1:8. Series 11 a.

These lenses also particularly adapted to copying and half-tone work, giving minute details with extreme flatness to the edges.

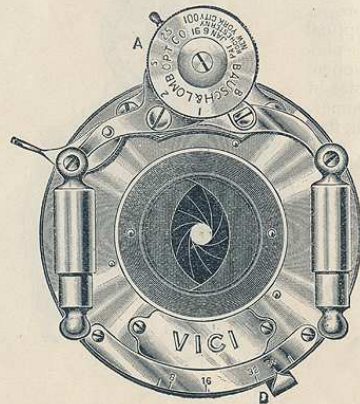
They are Supplied with Improved Iris Diaphragm. Waterhouse stops in place of Iris at the same prices.

No.	Size of Plate covered with Stop f. 12.5.	Diagonal of Largest Plate covered with Small Stop 72°	Free Diameter of Largest Lens.	Equivalent Focus.	Brass Aluminum Mounting.	
					Price.	Price.
1	4 x 5 in.	6 $\frac{5}{8}$ in.	5 $\frac{1}{4}$ in.	4 $\frac{3}{8}$ in.	\$30.00	\$33.00
2	4 $\frac{1}{4}$ x 6 $\frac{1}{2}$ "	8 $\frac{1}{4}$ "	5 $\frac{3}{4}$ "	5 $\frac{3}{8}$ "	33.00	36.00
3	5 x 8 "	10 $\frac{1}{8}$ "	1 "	6 $\frac{1}{2}$ "	43.00	47.00
4	6 $\frac{1}{2}$ x 8 $\frac{1}{2}$ "	12 $\frac{3}{8}$ "	1 $\frac{3}{16}$ "	8 "	54.00	58.00
5	8 x 10 "	14 $\frac{3}{4}$ "	1 $\frac{1}{16}$ "	9 $\frac{3}{8}$ "	64.00	68.00

Universal Wide Angle.

Size of Plate covered with Stop f. 16. Angle 80°.	Size of Plate covered with Stop f. 16. Angle 95°.	Diameter of Lenses.	Back Focus.	Price.
4 x 5	5 x 8	$\frac{3}{4}$ in.	3 $\frac{1}{4}$ in.	\$16.00
5 x 8	6 $\frac{1}{2}$ x 8 $\frac{1}{2}$	$\frac{7}{8}$ "	4 $\frac{3}{8}$ "	20.00
6 $\frac{1}{2}$ x 8 $\frac{1}{2}$	8 x 10	1 "	6 $\frac{1}{8}$ "	24.00

The Vici Shutter.



This is practically the latest improved Bausch & Lomb Unicum shutter, but being made especially for us are called "VICI" and "VIDI." The Vici shutter has Iris Diaphragms which are regulated by moving the lever "D." The shutter is set by moving the lever at top marked "A" and turning the disk to letters or numbers which regulate the speed, etc., the shutter working with a variation of speed from one second to one one-hundredth of a second or any fraction between, by moving the disk at the top to the desired figure opposite the set lever. When set at "I" one pressure of the bulb opens the blade automatically for one second. When set at "B" the shutter will remain open as long as pressure is maintained upon the bulb. Set at "T" for time exposure.

The only difference between the "VICI" and "VIDI" shutters is the "VIDI" is not equipped with retarding device, the difference in price being one dollar.

No.	Size of largest diaphragms.	Complete on a new Lens of our own manufacture without barrel.	When fitted to Lenses of our own manufacture with extra barrel.	When fitted to Lenses of other manufacture leaving barrel intact.
1	$\frac{3}{4}$ in.	\$8.00	\$ 8.00	\$10.00
2	$\frac{1}{2}$ "	8.00	8.00	10.00
3	1 "	9.00	10.00	11.00
4	1 $\frac{1}{8}$ "	10.00	11.50	13.00
5	1 $\frac{1}{4}$ "	12.00	14.00	15.00

Diaphragm Shutter,

(BAUSCH & LOMB OPTICAL COMPANY'S.)

It requires little argument to show that the proper place for opening and closing a shutter is in the optical axis of the lens, and in both time and instantaneous photography, it is evident that this Shutter, starting its opening with a pinhole and gradually increasing to the size of stop for which it is set, and returning in the same manner, will give the effect of a small stop, *i. e.* more depth, flatness, and equality of illumination. Comparative tests show that in practice these advantages are obtained to a marked degree.

The shutter is very compact and well balanced in its operation so that there is no jar, even at its quickest speed, while making an exposure varying in speed from $\frac{1}{5}$ to 1-100 seconds.

PRICES.

Size.	Price.
4 x 5	\$14.00
5 x 8	15.00
6 $\frac{1}{2}$ x 8 $\frac{1}{2}$	16.00

