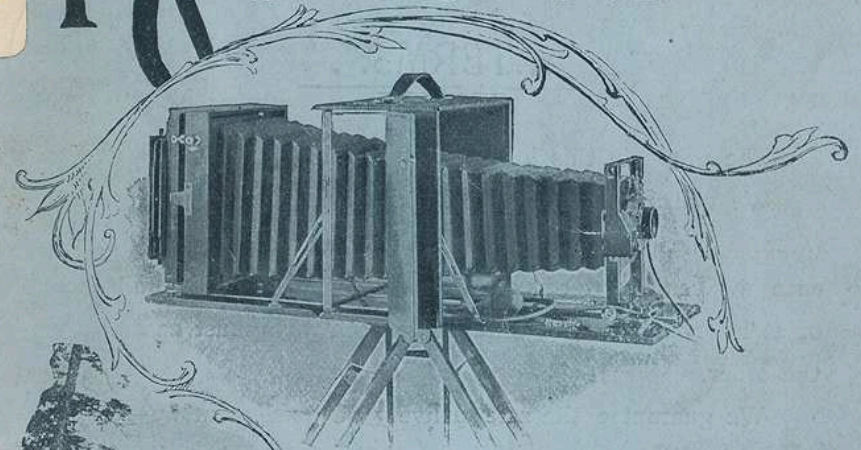


INDEX

5 5 5

Korona 1899 Kameras



Lenses and other

Photographic Apparatus

Gundlach Optical Co.

753-765 South Clinton St., ROCHESTER, N. Y.

KORONA CAMERAS
LENSES
PHOTOGRAPHIC GOODS



Gundlach Optical Co.,
Rochester, N. Y.

Press of
Union and Advertiser
Rochester

...TERMS...

The prices in this list are net f. o. b. Rochester.

We will send goods on approval to responsible parties, but where applicants are unknown to us, and no satisfactory reference is given, our terms are strictly C. O. D., and a remittance of at least sufficient for expressage both ways must accompany the order.

We guarantee the safe delivery of goods sent by freight or express, but assume no responsibility for goods ordered sent by mail.

Cash must accompany orders when goods are ordered sent by mail or freight.

All goods guaranteed as represented.

GUNDLACH OPTICAL CO.

HENRY H. TURNER, President and Manager.
JOHN ZELLWEGER, Vice-President.
J. C. REICH, Secretary and Treasurer.

KORONA CAMERAS

LENSES.....

AND OTHER

PHOTOGRAPHIC APPARATUS

MANUFACTURED BY THE

Gundlach Optical Co.,

753-765 South Clinton St., ROCHESTER, N. Y.



THE presentation of another edition of our Photographic Catalogue gives us opportunity to announce that we are now making a more complete line of photographic outfits, having recently made many additions to our already first-class plant for the manufacture of Cameras. Our Camera department is equipped with the latest and best tools and appliances to be had for the purpose and our product is unsurpassed.

As compared with our previous offerings, there are many changes in the Lenses, Cameras and Shutters, which have improved their general excellence and popularity. The prices throughout will be found very reasonable, and we guarantee the workmanship and optical performance to be unexcelled. We solicit a comparison with any apparatus in the market.

This Company was the first concern in the country to make a complete Photographic Camera, Lens and Shutter, all of its own manufacture. In the line of manufacturing the complete apparatus, we are thus first in the field, and we intend to maintain the lead. We employ only skilled labor, and use the best materials in all our goods, and no concern is better equipped for the production of first-class apparatus.

Our Lenses have long been favorably known, and are in use the world over in large quantity. We are abreast of the modern improvements in optics, and we especially call attention to the Turner-Reich Anastigmat Lens as absolutely unsurpassed by any equivalent instrument. The convertible combinations furnished with our Long-Focus Korona Cameras are especially recommended.

The importance of reliable Lenses for any grade of Photographic work should not be overlooked. No matter how fine a Camera, how beautiful the view upon which it is pointed, how skillful the operator, a poor lens will defeat the intention; in fact, "It's all in the lens." In the mad race for cheapness, many outfits are offered in which the Lens is totally incapable of really satisfactory work. With our solid reputation on Lenses, and the important fact that we make the COMPLETE outfit, it can be understood that our claims for quality have a substantial foundation. The economy incident upon a complete factory enables us to make the prices low.

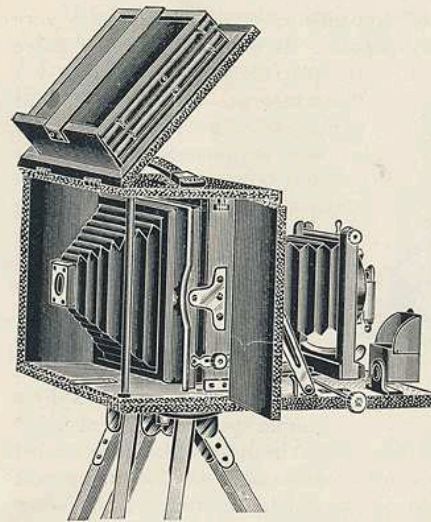
At the time of issuing this Catalogue, we are not only occupying a new building, with upwards of 25,000 feet of floor space, but are building an addition thereto, considerably increasing the floor space and better facilitating the manufacture of first-class Photographic Goods.

GUNDLACH OPTICAL CO.,

ROCHESTER, N. Y.

Korona Camera—Series I

This Camera embodies the very latest improvements, and has all adjustments required for any photographic work. No expense or pains have been spared to make it both handsome, convenient and complete, and the finish is of the finest possible from a well-equipped factory. The very best materials are used throughout; the wood is finely polished mahogany, while all the brass parts are finished and nickel-plated; the bellows and covering are of the best leather for the purpose.



The Korona is the most compact Camera made—see dimensions in another paragraph—and has room for three double plate-holders in the back, two of which are stored in our patented plate-holder carrier. There is a rack and pinion for focusing, while the front has both vertical and horizontal motions. The back has double swings,

and when focusing on the ground glass the whole ground glass may be exposed to view, as the back of the Camera folds over the top as shown in the cut. The Camera is fitted with two tripod sockets and a reversible view-finder, covered with a hood.

An accurately graduated focusing scale is provided.

Lenses.—The Korona I can be fitted with any of our lenses; but we especially recommend either our Instantaneous Symmetrical or the Turner-Reich Anastigmat. When fitted with the latter, this Camera is a most superior instrument at a low price - there is nothing to compare with it.

Shutter.—The Shutter is our latest and best. See page 29.

Plate-holder.—Our new Improved Korona holder is used, with hard rubber slides.

Sizes. The size of the 4x5 is 7¼ x 4¾ x 6½, and it weighs only 3½ pounds. The 5x7 is 9¼ x 5¼ x 7, and weighs only a trifle over 4 pounds.

PRICE.

Includes Camera, Lens and Shutter, and one Plate-holder.

	4 x 5	5 x 7	6½ x 8½
Korona, fitted with Instantaneous Symmetrical Lens.	\$25 00	\$32 00	\$ 40 00
Korona, fitted with Turner-Reich Lens	45 00	57 00	100 00
Symmetrical Wide-angle Lens, extra	8 00	10 00	12 00
Without Lens or Shutter	15 00	20 00	25 00
Extra Plate-holders	1 00	1 25	1 60
Leather-covered Case	2 50	3 00	3 50
Sole-leather Case	3 50	4 00	4 50

Korona Camera—Series I-A

This Camera is an instrument of convenience and capacity at a very moderate price, and has proved very popular. It is made to carry three

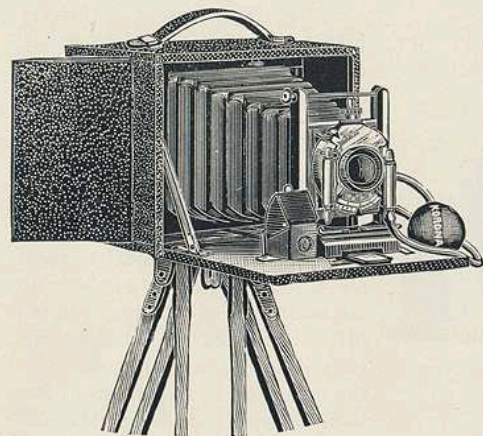


plate-holders, and the 4 x 5 measures, when closed, but $4\frac{3}{8} \times 5\frac{1}{2} \times 7$ inches, weighing only $2\frac{1}{2}$ pounds. It has rising and falling and side motions in front, and a single swing in the back. A rack and pinion for focusing is provided at an extra charge, if desired. When closed, the working parts are entirely concealed from view.

The swing back is pivoted at the center and is operated by a simple spring contrivance.

The ground glass is concealed from view by a door in the back which, when open, hangs down

out of the way. The ground glass itself is easily removable.

There is an accurately graduating focusing scale, for use whenever it is not convenient to focus on the ground glass.

The finder is shaded by a metal hood, and is reversible for inspecting either horizontal or vertical views. Two tripod sockets are provided.

Lenses.—The lens fitted regularly to this camera is our celebrated Instantaneous Symmetrical, but our Turner-Reich Anastigmat can be substituted at the price quoted below. We also fit to it an efficient Single Achromatic Lens.

The Shutter.—With Single Achromatic Lens Shutter "B," page 30, is furnished. With Instantaneous Symmetrical Korona Shutter "A," page 29.

Plate-holder.—The Plate-holder is our Korona holder, and is provided with hard rubber slides.

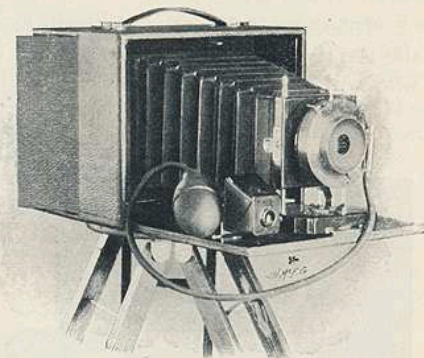
PRICE.

Includes Camera, Lens, Shutter and One Plate-holder.

	4 x 5	5 x 7
Korona I-A Camera with Single Achromatic Lens	\$13 00	\$20 00
Korona I-A Camera with Instantaneous Symmetrical Lens	16 00	23 00
Korona I-A Camera with Turner-Reich Lens	36 00	48 00
Extra for rack and pinion for fine focusing	2 00	2 00
Symmetrical Wide angle Lens, extra	8 00	10 00
Without Lens and Shutter	10 00	17 00
Extra Plate-holders	1 00	1 25
Leather-covered Case	2 50	3 00
Sole-leather Case	3 50	4 00

Korona Camera—Series I-B

This camera is made with the same care as our other cameras, and is intended to meet the wants of those who wish a cheaper camera than the I-A, yet with as many conveniences as possible. We are sure that it will be found exceedingly satisfactory in operation, while its appearance is elegant, showing no roughness, but instead a remarkably fine finish. Indeed, considering the camera, lens and shutter throughout, it may well be said that there is about it "nothing cheap but the price," and we confidently recommend Korona I-B as a most desirable camera for the amount invested.



It has the rising and falling motion in front, but no swing in the back. The movable front adds much to the value of this camera, and allows the operator to control the area of the plate in a manner impossible with a stationary front.

A carefully graduated focusing scale is provided, for use without focusing on the ground glass, and in all cases is this scale tested as to its accuracy.

Lenses—The Korona I-B is supplied with either our Single Achromatic Lens or our Instantaneous Symmetrical Lens, as per prices below. Both of these lenses are as good as can be made for the money.

Shutter.—This camera is equipped with our new "B" Shutter, made especially for it, which gives every advantage, including instantaneous, time, and bulb attachment, and the iris diaphragm. It is very simple in construction and yet very durable and will not easily get out of order, and gives advantages usually found only on cameras of much higher price.

Plate-holders.—Our Korona Holder is used with hard rubber slides.

Size.—The size of the 4 x 5 is $4\frac{3}{4} \times 4\frac{3}{4} \times 5\frac{1}{2}$, and it weighs only $2\frac{1}{2}$ pounds. The 5 x 7 is $5 \times 6\frac{3}{4} \times 9$, and weighs only $3\frac{1}{2}$ pounds. While light in weight, all parts are strongly made.

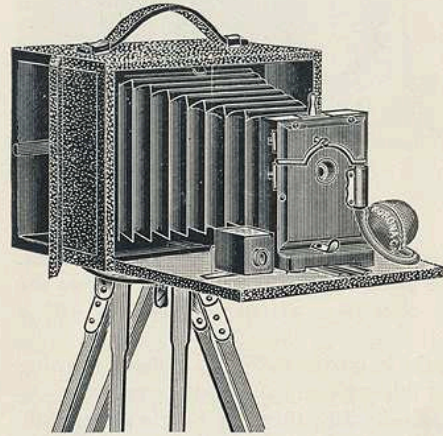
PRICE.

Includes the Camera, Lens, Shutter and One Double Plate-holder.

	4 x 5	5 x 7
Korona I-B Camera, with Single Achromatic Lens	\$10 00	\$15 00
Korona I-B Camera, with Instantaneous Symmetrical Lens	14 00	19 00
Extra Plate-holders	1 00	1 25
Leather-covered Case	2 50	3 00
Sole-leather Case	3 50	4 00

Korona Camera—Series I-C

This Camera is as carefully made as our other cameras, having the same size and style box as our I-A and I-B. It is intended to meet the wants of those who wish a similar instrument but at a lower price. The box is made



to carry three plate-holders. It has fine morocco grain-leather covering, same as our higher-priced cameras. When closed, all the working parts are concealed, and three plate-holders can be carried in the back of the camera box. Size, $4\frac{3}{4} \times 7 \times 5\frac{3}{8}$; weight, $2\frac{1}{2}$ pounds.

The ground glass is concealed from view by a door in the back which, when open, hangs down out of the way. The ground glass itself is easily removable.

There is an accurately graduated focusing scale, for use whenever it is not convenient to focus on the ground glass.

The finder is reversible for inspecting either horizontal or vertical views. Two tripod sockets are provided.

The Lens—This most important part of the camera is our fine single Achromatic lens, and will take landscapes, portraits or interiors. It will make a sharp and brilliant picture. A set of diaphragms are conveniently placed.

The Shutter is of special design, fitted with pneumatic and finger release, and is arranged for time, bulb and instantaneous exposure.

PRICE.

Includes the Camera, Lens, Shutter and one Double Plate Holder.

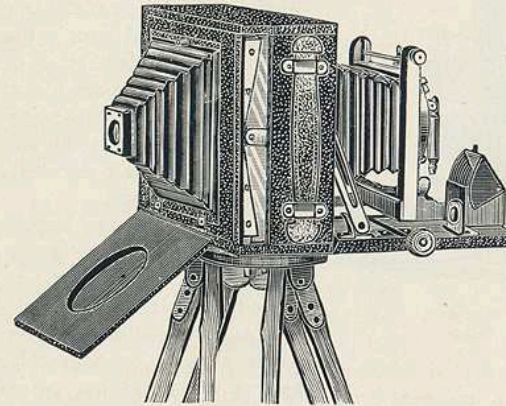
Korona I-C Camera, with Single Achromatic Lens	4×5	\$7 00
Extra Plate-holders		1 00
Leather-covered Case		2 50
Sole-leather Case		3 50

Korona Camera—Series II

This elegant folding camera is both beautiful and complete. It is distinct from the Korona I in being more compact, a novel arrangement permitting all

the space usually given to extra holders to be saved. The 4×5 is only $2\frac{1}{2}$ inches thick when closed. The outfit also includes a handsome and compact carrying case. The best selected mahogany is used in its construction, and it is covered with fine black grain leather. The metal parts are highly finished and nickel plated, giving a most elegant appearance.

The operation of this camera is simplicity itself.



The back is held in position by a spring, and does not need to be removed to insert the plate holder. A spring actuated cover conceals the ground glass and our patent focusing back from view, which when open shields it from light, thus doing away with the necessity of a focusing cloth or a magnifying glass. For ordinary snap-shot work an accurate focusing scale is provided.

The camera has rising and falling front, and a double swing-back; it has two plates for use on a tripod, and is provided with rack and pinion for focusing. The hooded view-finder is reversible.

Lenses.—The lens is our well-known Instantaneous Symmetrical; but the superb Turner Reich Anastigmat is fitted when desired.

Shutter.—The Korona shutter is used, of the latest and best construction.

Plate-holder is our Korona holder, with hard rubber slides.

Carrying-case.—A fine leather-covered carrying case and strap is provided with each outfit, in either of two sizes, one having a compartment for the camera and a second compartment for five double plate-holders; the other has a compartment for the camera and three plate-holders. This latter size can be furnished in either black or brown leather.

Sizes.—The 4×5 camera is $5\frac{1}{4} \times 6\frac{1}{4} \times 2\frac{1}{2}$, and weighs less than 2 pounds; the 5×7 is $6\frac{1}{4} \times 7\frac{1}{4} \times 2\frac{1}{2}$, and weighs about 2 pounds.

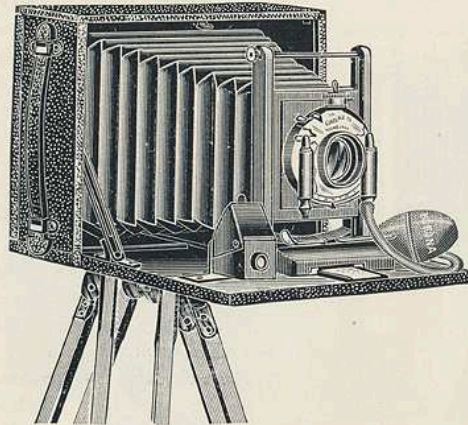
PRICE.

Includes one Double Plate-holder and Carrying-case, complete.

	4×5	5×7
Korona II Camera, with Instantaneous Symmetrical Lens	\$25 00	\$32 00
Korona II Camera, with Turner-Reich Lens	45 00	57 00
Symmetrical Wide-angle Lens, extra	8 00	10 00
Without Lens or Shutter	15 50	20 00
Extra Plate-holders	1 00	1 25

Korona Camera—Series II=A

This camera is of the same design as the preceding series, the principal difference being the omission of the rack and pinion for focusing, and the swing-back.



Selected mahogany is used in the construction of the box, and it is covered with a fine quality of grain leather.

The metal parts are highly polished and are nickel-plated and, in contrast with the rich mahogany, afford a decidedly elegant appearance.

As in Series II, the back is held in position by a spring, and does not need to be removed to insert the plate-holder. A spring-actuated cover, when closed, conceals the ground glass and our patent focusing back from view, and

when open acts as a shield to screen the ground glass from light, thus largely doing away with the necessity of a focusing cloth and also a magnifying glass. Ordinary snap-shot or view work may be focused readily by means of the accurate focusing scale, which serves well for all objects at from 6 feet to 100 feet.

The camera has a rising and falling front, both vertical and horizontal motions, and two plates for tripod screw.

The reversible view-finder is provided with a hood, so that the image can easily be seen, even in the sunlight.

Lenses.— This camera is fitted with either our Instantaneous Symmetrical lens or the Turner-Reich Anastigmat

Shutter.— Our regular Korona shutter, as lately improved, is furnished with this camera.

Plate-holder has hard rubber slides, and is of the same construction as those supplied with Series II cameras.

Carrying-case— A fine leather carrying-case and strap is provided with each outfit, in either of two sizes, one holding the camera and five double plate-holders, while the other has a compartment for the camera and three plate-holders. The latter size can be had in either black or brown leather.

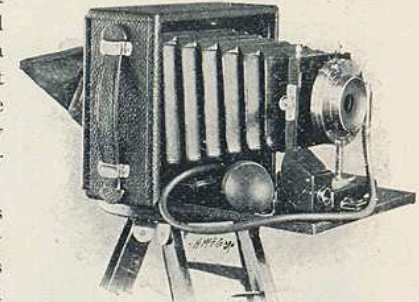
PRICE.

Includes Camera, Lens, One Double Plate-holder and Carrying-case, complete.

	4 x 5	5 x 7
Korona II-A Camera, with Instantaneous Symmetrical Lens	\$16 00	\$23 00
Fitted with Turner-Reich Lens	36 00	48 00
Symmetrical Wide-angle Lens, extra	8 00	10 00
Without Lens or Shutter	10 00	17 00
Extra Plate-holders	1 00	1 25
Rock and Pinion, extra	2 00	2 00

Korona Camera—Series II=B

This form of the Korona line is entirely new, and is made with special view to its use by bicyclists or others, to whom extreme compactness is an object, without the incurring of great expense. The handsome leather covered carrying-case, which contains the camera and three double holders, measures but $4\frac{3}{4} \times 6\frac{7}{8} \times 6\frac{7}{8}$, while the dainty little camera itself, with one plate-holder ready for business, is but $3\frac{1}{4} \times 5\frac{1}{4} \times 6\frac{1}{2}$ over all.

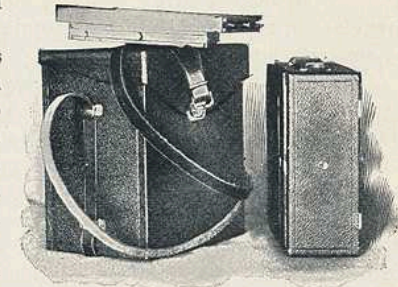


The Korona II-B as ready for business, showing focusing shield over ground glass.

The finish of the Korona II-B is elegant, and the polished mahogany finish is set off by the nickel-plated brass parts. Both camera and case are covered with fine black leather. The reliable Single Achromatic Lens is fitted in our special new Shutter, which is a marvel of efficiency; it has time, instantaneous and bulb exposures, a finger release and a pneumatic release. There are three speeds to the instantaneous exposure adjustable in a second. The Shutter has iris diaphragm, with engraved *f* numbers.

The front rises and falls, and there is a fine hooded reversible finder, as well as tripod sockets for vertical and horizontal exposures.

A novel arrangement of the back is with the use of a rising spring door, in combination with neat side curtains, so that this camera may easily be held in the hand and the image clearly seen on the ground-glass without the use of a focusing cloth. This improvement will be appreciated.



The Korona II B, with carrying-case.

This camera is great value for the money, and a delightful little instrument. It is not long since a Shutter alone, not nearly so good as the one on this camera, was sold at a figure above our price for the entire outfit.

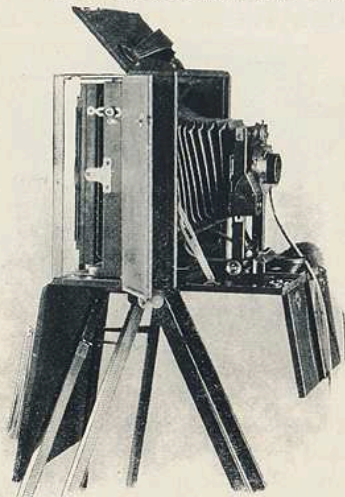
PRICE.

Including Camera, Lens, Shutter, One Plate-holder and Leather-covered Carrying-case with Strap.

	4 x 5	5 x 7
Korona II-B Camera, with Single Achromatic Lens,	\$10 00	\$15 00
Korona II-B Camera, with Instantaneous Symmetrical Lens,	14 00	19 00
Extra Plate-holders,	1 00	1 25

Korona Long-Focus Camera—Series VI

The Korona Long-Focus is the latest and best form of hand camera, and fully meets the needs of both the expert amateur and professional photographer. While it possesses the compact and convenient features of the hand camera, and may be used with ease for "snap shots," it has also all the useful adjustments of the very best tripod cameras, with advantages peculiar to itself. It may be defined as practically a universal camera, having every facility and adjustment for view work and instantaneous photography, and in addition being especially adapted to copying and enlarging, a most fascinating branch of the "art science."



Long-Focus Korona as used with Wide-angle Lenses.

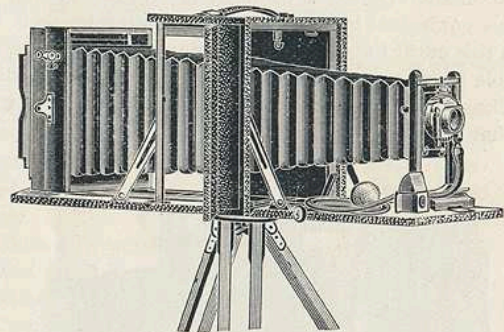
It is made of the very best of materials throughout, the mahogany wood work being finely polished, while all brass parts are finished and nickel-plated. The bellows and covering are of first quality leather. Indeed, the camera is first class in every way, and we confidently expect that it will be well received by amateurs and professionals alike.

In addition to its specially fine construction, the distinguishing peculiarity of the Korona Long-Focus Camera is its unusual bellows capacity—more than double the ordinary draw is conveniently available without any sacrifice of strength or convenience. The focal capacity of the 4 x 5 is 17 inches; of the 5 x 7 23 inches; of the 6½ x 8½ 31 inches.

Convenience.—The Korona Long-Focus has every modern improvement and convenience. **The back is quickly reversible**, so that upright pictures may be made without turning over the camera. The back is also made to swing horizontally and vertically from the centers, and these adjustments are most positive and convenient. The front rises and falls

vertically, and slides horizontally—the latter an unusual but most valuable adjustment. The front is easily and quickly drawn out to an approximate focus, and then a fine rack and pinion facilitates delicate focusing.

The back drops to a horizontal position, in which position it forms a bed for the extension of the bellows in using long-focus lenses or enlarging; or, it



Long-Focus Korona fully extended.

may be dropped clear down out of the way, when it is desired to work close up to the ground glass in using a wide-angle lens. Both of these positions are indicated in the engravings. There are also doors at the top and side, for further convenience.

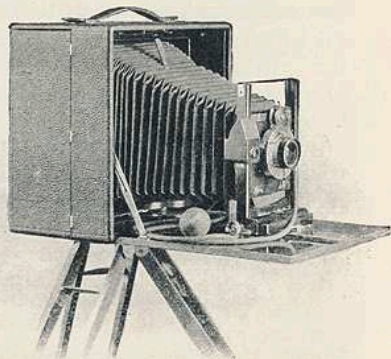
The door or side which forms the bed for the camera, is hinged about its middle, and drops so that very wide-angle lenses can be safely used.

Lenses.—One of the features peculiar to the Korona Long-Focus is its superb lens system. We fit it with either our celebrated Turner-Reich Anastigmat or our Rapid Rectigraphic Lens. Both these lenses are made in the convertible form, *i. e.*, so that either front or back combination can be used alone. The separate combinations of these lenses are fully corrected for use as single lenses, and used in this way they give the most satisfactory results for long-focus work.

A long focus camera with the lens of ordinary construction, where the combinations are of equal focal length, afford but little, if any, advantage over the usual style of camera, but by the use of our convertible lens system the full range of the camera is brought into play. With the arrangement of lenses which we furnish with these cameras, it is within the power of the operator, in so far as lenses or camera can aid, to accomplish results not within the reach of an ordinary outfit.

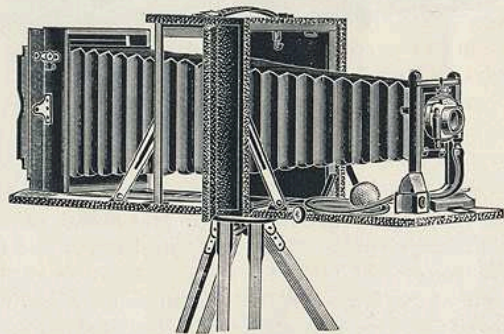
The Turner-Reich Lens which we fit to this camera is same as Series II, see page 15, for the focal lengths of the single and double combinations.

The Rectigraphic Lens which is furnished with this camera is same as Series VIIa. See page 21 for the focal lengths of the combinations.



Long-Focus Korona as ready for ordinary view work.

The 5 x 7 Turner-Reich Lens of the Series II, has an equivalent focus of 7½ inches, while the back combination has a focus of 12 inches and the front combination has a focus of 18 inches. In addition to the above we can also furnish a separate combination of 10-inch focus, which, used in connection with the 12-inch combination, gives a wide-angle lens of 5½ inches focus. When the 10-inch combination is used in connection with the 18-inch combination, a lens of 7 inches equivalent is obtained. It will thus be seen that the lenses furnished with this outfit have 10, 12 and 18 inches in single lenses, and combinations of double lenses can be had with equivalent focal lengths of 5½, 7 and 7½ inches. Thus from the same point, six sizes of pictures may be made of any object without moving the camera.



Showing Patented Plate-Holder Carrier (on top).

With the Rectigraphic Lenses about the same range of foci can be had as with the Turner-Reich Lens. For a wide-angle with the Rectigraphic Lens we furnish a set of wide-angle symmetrical lenses mounted in cells which are interchangeable with the regular lens. These are Series XI.

In using a single combination of either the Turner-Reich or Rectigraphic Lens, the combination used must always be placed *back* of the diaphragm; that is, back of the Shutter.

The diaphragm plates of the Shutter are arranged so that the *f* value of the opening for the equivalent focal length or for any of the single combinations can be seen at a glance.

The 4 x 5 Camera is 7½ x 6¾ x 7¾, and weighs 4¼ pounds; the 5 x 7 is 9¼ x 6¼ x 9¾ and weighs 6 pounds. The 6½ x 8½ is 11½ x 7¾ x 12½, and weighs 12 pounds.

Shutter.—The Korona Shutter is used, with all its advantages, including the iris diaphragm, and as noted in the last paragraph, the stop numbers

for each lens of the convertible system are engraved on the mount, so that there is the utmost possible ease and facility in using the various lenses.

The Plate-holder is our Korona holder, with hard rubber slides. There is space in the back of the camera box for three holders, and we supply our patented carrier for two holders, this carrier protecting the holders from light, and being very convenient in field use.

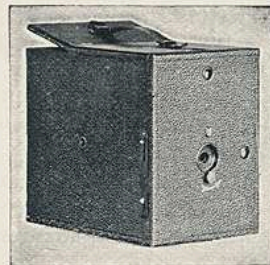
PRICE.

Complete with Lens, Shutter and One Plate-holder.

	4 x 5	5 x 7	6½ x 8½	8 x 10
Korona Long-Focus, Rectigraphic Lens . . .	\$40 00	\$50 00	\$65 00	\$80 00
Wide-Angle Lens, extra	8 00	10 00	12 00	15 00
Without Lens and Shutter	30 00	40 00	50 00	60 00
Leather covered case	2 50	3 00	3 50	4 00
Sole leather case	3 50	4 00	4 50	5 00
Korona Long-Focus, Turner-Reich Anastigmat	60 00	85 00	120 00	150 00
Wide-Angle Lens, extra		15 00		
Extra Plate-holders	1 00	1 25	1 60	2 00
Sole Leather Case to hold six holders	4 50	5 50	6 00	6 50

Korona Camera—Series X

This is a thoroughly up-to-date and most useful camera at a marvelously low price. It is of the "fixed focus" type, requiring no focusing, and has been made as small as possible in any fixed-focus 4 x 5 camera. The size is only 5¾ x 8 x 7½, and the weight is less than two pounds.



The Plate-holders will hold any standard size plate. There are two view-finders, so that a picture may be taken either horizontally or vertically. It also has two tripod plates.

This camera is covered with fine morocco grain-leather, the same as the best cameras, and looks as well as the highest-priced cameras. It has a leather handle. One Plate-holder is furnished with each camera, but it will hold three. It has a rapid safety Shutter, which can be set for time, instantaneous or quick time release. The

quick-time release has not before been put on so cheap a camera, being heretofore a feature of high-priced cameras, on which it corresponds to the bulb release of the pneumatic shutters. Thus this camera at a very low price is equipped with the resources of the high-grade instruments.

Last, but by no means least, is the lens. The Korona X has our well-known Single Achromatic Lens, which is sufficient guarantee of the results that may be obtained. It is quick, with great depth of focus, and will be found very satisfactory.

PRICE.

Korona X Camera, 4 x 5	\$5 00
Extra Plate-holder	1 00

LENSES

Our Lenses are well known as of the best quality in the various grades, and have for years been used extensively by the largest camera manufacturers, and in the higher grades purchased by many discriminating photographers. We admit no superiors in Lens making, and with the best possible plant, acquaintance by long experience with the proper optical glasses, and the highest grade of skill, we confidently expect to keep in the front rank. The public should not confuse our instruments with those offered by concerns which do not make Lenses, but merely purchase in the market. We are manufacturers.

The Turner-Reich Anastigmat Lens

The introduction of Anastigmatic Lenses marks an epoch in the history of photographic lenses. That they are immensely superior to any of the older style lenses cannot be doubted. After an elaborate series of calculations and experiments, our Turner-Reich Anastigmatic Lens was produced, and the experience of two years has fully justified our claims as to its quality and superiority. It has advantages over any other anastigmatic lens in the market.

The anastigmatic errors are entirely corrected with the full aperture, so that for the given size of plate they need not be diaphragmed, and the image will be as sharp on the edge as in the center.

The field is absolutely flat for the size of plate covered.

The combinations are symmetrical, and either combination used alone gives a beautiful image. In fact, a single combination of this lens works to the very finest advantage as a single lens.

The glasses used are from the Jena factories, and are of the very finest quality. Owing to the peculiar nature of one of the glasses used, it is impossible to obtain it free from a few small bubbles, which do not, however, injure the working of the lens.

The lenses are mounted in brass, and are fitted only with iris diaphragms. Aluminum mounts will be furnished at an additional cost.

The full opening of these lenses is F:7.5, and with that opening they will cut the size plate claimed. With smaller openings, plates one and two sizes larger are fully covered.

Not only does the Turner-Reich give a flat field with exquisite definition, but it possesses remarkable depth of focus.

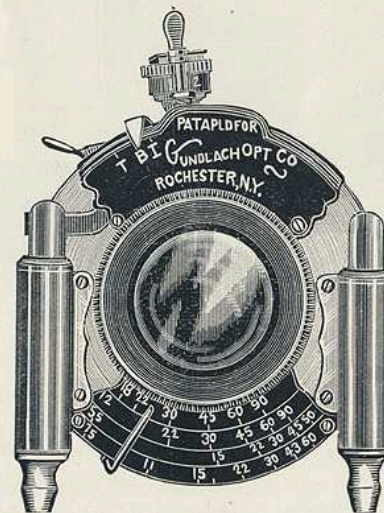
This lens is the only anastigmat lens which has been invented and is

controlled in this country. All others are of European origin, and are controlled by European concerns.

This lens was patented in the United States, May 14, 1895, and patents in principal European countries have since been granted.

Series II—Turner-Reich Convertible Anastigmat, F:7.5

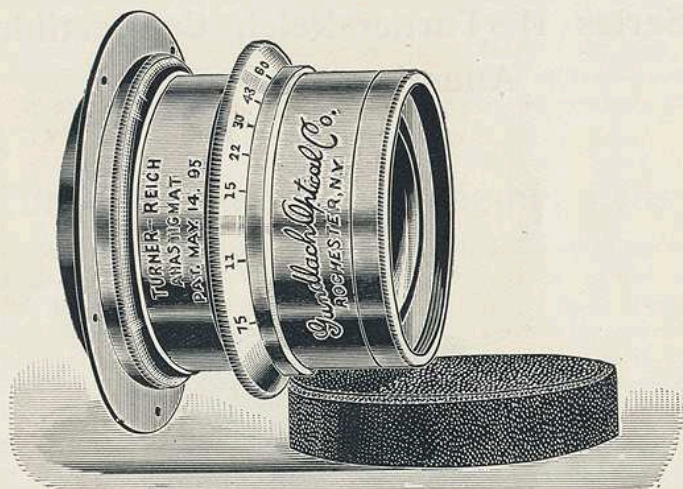
WITH IRIS DIAPHRAGM.



No.	Size of Plate	Equiv. Focus	Focus of Back Lens	Focus of Front Lens	Price
1	4 x 5	6 in.	11 in.	14 in.	\$41 00
2	5 x 7	7½ "	12 "	18 "	55 00
3	5 x 8	8½ "	16 "	18 "	70 00
4	6½ x 8½	10½ "	18 "	24 "	90 00
5	8 x 10	12 "	21 "	28 "	105 00

Series III—Turner-Reich Anastigmat, F:7.5

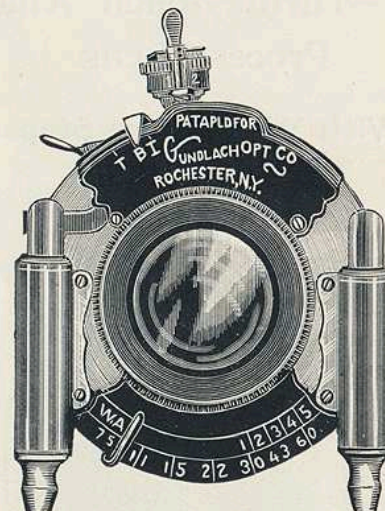
WITH IRIS DIAPHRAGM.



No.	Equivalent Focus	Diam. of Lenses	Plate covered sharply with opening of			Price with Brass Mounting	Price with Aluminum Mounting
			F : 7.5	F : 15	F : 60		
1	6 in.	$\frac{7}{8}$ in.	4 x 5	5 x 7	5 x 8	\$ 35 00	\$ 38 00
2	$7\frac{1}{4}$ "	1 "	5 x 7	5 x 8	$6\frac{1}{2}$ x $8\frac{1}{2}$	40 00	44 00
3	$8\frac{1}{2}$ "	$1\frac{1}{4}$ "	5 x 8	$6\frac{1}{2}$ x $8\frac{1}{2}$	8 x 10	50 00	55 00
4	$10\frac{1}{2}$ "	$1\frac{1}{2}$ "	$6\frac{1}{2}$ x $8\frac{1}{2}$	8 x 10	10 x 12	75 00	80 00
5	12 "	$1\frac{5}{8}$ "	8 x 10	10 x 12	11 x 14	85 00	90 00
6	14 "	2 "	10 x 12	11 x 14	14 x 17	110 00	115 00
7	17 "	$2\frac{1}{2}$ "	11 x 14	14 x 17	17 x 20	160 00	166 00
8	21 "	3 "	14 x 17	17 x 20	18 x 22	250 00	257 00
9	26 "	$3\frac{3}{4}$ "	17 x 20	18 x 22	22 x 25	350 00	358 00

Series IV—Turner-Reich Anastigmat, F7.5:

MOUNTED IN KORONA SHUTTER

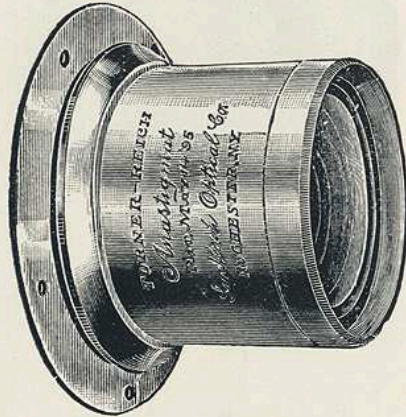


No.	Equivalent Focus.	Plate Covered with F : 7.5	Price, including Shutter
1	6 in.	4 x 5	\$36 00
2	$7\frac{1}{4}$ "	5 x 7	45 00

This series of Anastigmat Lenses is constructed especially for use with hand cameras. They work with the same aperture as the lenses of Series III, and with that opening will cover the plate fully. It is impossible to fit a shutter between the lenses of Nos. 1 and 2, of Series III, hence the lenses of Series IV are constructed to accommodate a shutter between them. Their construction does not admit of covering so large a plate as the Series III. lenses, but the light circle is fully large enough to cut sharply the plates for which they are listed, and on those plates we guarantee them to be fully equal to the lenses of Series III, and being intended for hand cameras, the smaller light circle is no objection. The price given above includes the lens fitted to the Korona shutter, with iris diaphragm—thus combining the finest and most compact shutter and best lens in the market.

Series V—Turner-Reich Anastigmat Process Lens

With Waterhouse Stops



No.	Diameter of Lens	Plate	Focus	Price
1	1 1/4 in.	10 x 12	12	\$ 65 00
2	2 "	16 x 18	18	125 00
3	2 5/8 "	18 x 22	24	180 00
4	3 3/8 "	22 x 25	30	275 00

The Rectigraphic and Perigraphic Lenses

Have been before the public for many years, and their merits are so well known that we need not enter into a lengthy discussion of them. We may say, however, that we have recently made some changes in their construction which have greatly improved their general performance.

The lenses are perfectly achromatic and rectilinear, and of superior covering power and definition. Excepting our Turner-Reich Anastigmat, no lenses in equivalent grades are equal to these in general excellence.

The two combinations are of different focal length, the back lens having much shorter focus than the front lens, and the relative curvatures are so calculated as to secure perfect optical symmetry of the compound, and at the same time to form perfect achromatic and aplanatic objectives for themselves if used singly. This novel plan offers the important advantage that these lenses, in fact, consist of three objectives of different focal lengths, in the following approximate proportions:

Equivalent of compound (both Lenses),	2
Back Lens alone,	3
Front Lens alone,	4

thus giving, on the same plate, pictures differing in size about as 2 to 3 to 4.

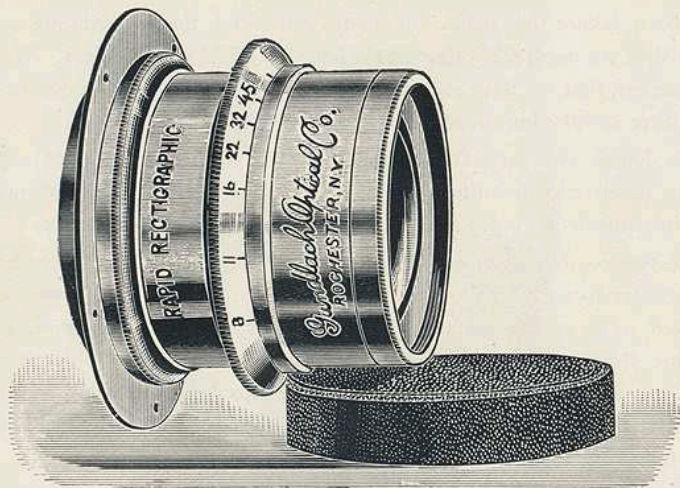
The exceeding utility of this arrangement is more apparent, in hand camera use, when the lens is mounted into a camera with sufficient bellows capacity—as, for instance, our Korona Long-Focus instrument. The photographer is often enabled to obtain a satisfactory view of an object at a distance which, with the ordinary combination, is almost entirely lost.

To use the back lens alone, the front lens should be removed. To use the front lens alone, the back lens is to be removed and the front lens screwed into its place; *i. e.*, the place of the back lens. The focal length of the compound and of each combination are engraved in the mounts.

These lenses are now fitted with iris diaphragms.

Series VII—Rapid Rectigraphic

WITH IRIS DIAPHRAGM.



No.	Size of Plate	Diam. of Lenses	Equivalent Focus	Focus of Back Lens	Focus of Front Lens	Price with Iris Diaphragm
0	3¼ x 4¼	1⅜ in.	5 in.	8 in.	11 in.	\$ 14 00
1	4 x 5	1 " "	6¼ " "	10 " "	13½ " "	18 00
1½	4¼ x 6½	1⅞ " "	7 " "	11 " "	14¾ " "	20 00
1¾	5 x 7	1⅞ " "	8 " "	12½ " "	17 " "	22 00
2	5 x 8	1¼ " "	8½ " "	13½ " "	18 " "	24 00
3	6½ x 8½	1½ " "	11 " "	17 " "	23 " "	30 00
4	8 x 10	1¾ " "	13 " "	20½ " "	28 " "	38 00
5	10 x 12	2 " "	16 " "	25¼ " "	34 " "	45 00
6	11 x 14	2¼ " "	18½ " "	29¼ " "	39½ " "	60 00
7	14 x 17	2¾ " "	22 " "	34¾ " "	47 " "	85 00
8	17 x 20	3¼ " "	26 " "	41 " "	56 " "	100 00

Nos. 0 and 1 can be had in matched pairs at an additional cost of \$2.

Series VII-A—Rapid Rectigraphic

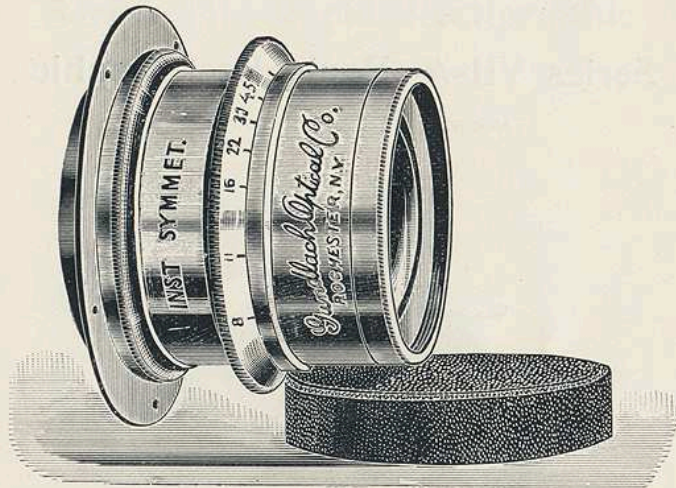
MOUNTED IN KORONA SHUTTER



No.	Size of Plate	Diam. of Lenses	Equivalent Focus	Focus of Back Lens	Focus of Front Lens	Price, inc'g Shutter
1	4 x 5	1 in.	6¼ in.	10 in.	13½ in.	\$23 00
1½	4¼ x 6½	1⅞ " "	7 " "	11 " "	14¾ " "	25 00
1¾	5 x 7	1⅞ " "	8 " "	12½ " "	17 " "	27 00
2	5 x 8	1¼ " "	8½ " "	13½ " "	18 " "	29 00
3	6½ x 8½	1½ " "	11 " "	17 " "	23 " "	35 00
4	8 x 10	1¾ " "	13 " "	20½ " "	28 " "	43 00

Only the above sizes of the Rectigraphic are supplied with Shutter.

Series IX—Instantaneous Symmetrical Lens



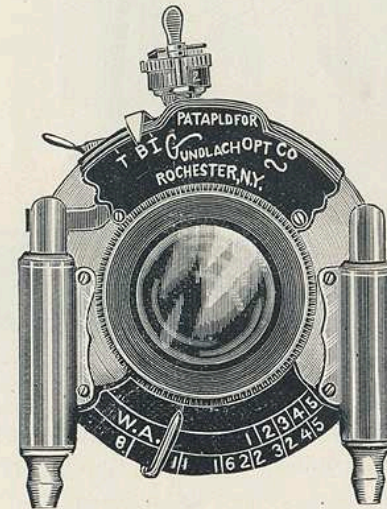
These lenses, as the name implies, are made after the well-known "symmetrical" plan, and they are not surpassed by any lens in the market made after that plan. After the most careful experiments, extending over a long period of time, we have selected the glasses used in their construction from the best which the world has yet produced. The glasses are of a high grade and expensive variety, and make possible the correction of chromatic and spherical aberrations to as high a degree as has yet been obtained in photographic lenses. The lenses are not cheap in any sense of the word, except as to price, which latter is very low. In addition to using the very finest glass, the best workmanship is put into their construction. We claim that these lenses are as fine as it is possible to make a lens on the symmetrical plan, and we are anxious to have them compared with lenses of the same style of any other make, regardless of price.

Iris Diaphragms are now supplied with these lenses.

No	Size of Plate	Diam. of Lenses	Equivalent Focus	Price
1	4 x 5	1 in.	6¼ in.	\$10 00
1¾	5 x 7	1⅓ " "	8 " "	15 00
2	5 x 8	1¼ " "	8½ " "	18 00
3	6½ x 8½	1½ " "	11 " "	22 50
4	8 x 10	1¾ " "	13 " "	28 00
5	10 x 12	2 " "	16 " "	40 00
6	11 x 14	2¼ " "	18½ " "	52 00
7	14 x 17	2¾ " "	22 " "	70 00
8	17 x 20	3¼ " "	26 " "	80 00

Series IX-A—Instantaneous Symmetrical Lens

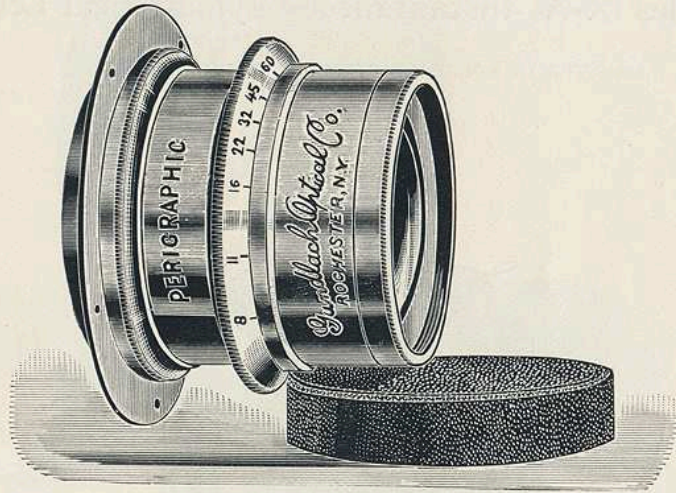
MOUNTED IN KORONA SHUTTER, WITH IRIS DIAPHRAGM



No	Size of Plate	Diam. of Lenses	Equivalent Focus	Price with shutter
1	4 x 5	1 in.	6¼ in.	\$13 00
1¾	5 x 7	1⅓ " "	8 " "	18 00
2	5 x 8	1¼ " "	8½ " "	23 00
3	6½ x 8½	1½ " "	11 " "	27 50
4	8 x 10	1¾ " "	13 " "	33 00

Series VIII—The Perigraphic

WITH IRIS DIAPHRAGM.



This lens has the same general construction as the Rectigraphic lens, but in effect a wide-angle lens. The combinations may be used singly with good effect, differing as do those of the Rectigraphic lens, for description of which see page 19.

No.	Size of Plate	Diam. of Lenses	Equivalent Focus	Focus for Back Lens	Focus for Front Lens	Price
0	4 x 5	$\frac{3}{4}$ in.	$3\frac{3}{4}$ in.	$5\frac{7}{8}$ in.	8 in.	\$18 00
1	5 x 7	1 " "	5 " "	8 " "	11 " "	26 00
2	$6\frac{1}{2}$ x $8\frac{1}{2}$	$1\frac{1}{8}$ " "	$6\frac{1}{4}$ " "	10 " "	$13\frac{1}{2}$ " "	30 00
3	8 x 10	$1\frac{5}{8}$ " "	$8\frac{1}{2}$ " "	$13\frac{1}{2}$ " "	18 " "	35 00
4	10 x 12	$1\frac{5}{8}$ " "	11 " "	17 " "	23 " "	42 00
5	11 x 14	$2\frac{1}{8}$ " "	13 " "	$20\frac{1}{2}$ " "	28 " "	52 00
6	14 x 17	$2\frac{5}{8}$ " "	16 " "	$25\frac{1}{2}$ " "	34 " "	64 00
7	17 x 20	$3\frac{1}{8}$ " "	$18\frac{1}{2}$ " "	$29\frac{1}{4}$ " "	$39\frac{1}{2}$ " "	90 00

Nos. 0 and 1 can be had in matched pairs at an additional cost of \$2.

The sizes from 1 to 3 inclusive of this lens can be mounted in the Korona Shutter, if desired, at an additional cost of \$5 each.

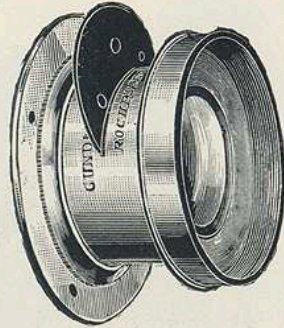
Series X—Wide-Angle Lens



The extreme angular aperture of this lens is the especial feature for which we recommend it to the photographic public. It is absolutely rectilinear, and possesses, in so far as any lens of extreme angle can, the qualities which have won so much favor for our other lenses. It is provided with rotating stops. Its angle is fully 100° .

No.	Size of Plate	Diameter of Lenses	Back Focus	Equivalent Focus	Price
1	5 x 7	$\frac{7}{8}$ in.	3 in.	$3\frac{3}{8}$ in.	\$24 00
2	$6\frac{1}{2}$ x $8\frac{1}{2}$	1 " "	$4\frac{1}{8}$ " "	$4\frac{3}{8}$ " "	30 00
3	8 x 10	$1\frac{1}{8}$ " "	$4\frac{3}{4}$ " "	$5\frac{1}{8}$ " "	35 00
4	10 x 12	$1\frac{7}{8}$ " "	6 " "	$6\frac{1}{2}$ " "	40 00
5	11 x 14	$1\frac{5}{8}$ " "	$6\frac{7}{8}$ " "	$7\frac{1}{2}$ " "	47 00
6	14 x 17	2 " "	$8\frac{1}{4}$ " "	9 " "	55 00
7	17 x 20	$2\frac{3}{8}$ " "	10 " "	$10\frac{1}{8}$ " "	80 00

Series XI—Wide=Angle Symmetrical Lens



This is a fine wide-angle-lens, made on the symmetrical plan, and will give good satisfaction. We can strongly recommend it for quality, and it sells at a very low price. It embraces an angle of from 80 to 85°, and for a wide-angle is very rapid. It is fitted with rotating stops.

No.	Size of Plate	Equivalent Focus	Back Focus	Price
1	4 x 5 in.	4 in.	3½ in.	\$ 9 00
2	5 x 7 "	5½ "	4¾ "	12 00
3	6½ x 8½ "	6½ "	5½ "	15 00
4	8 x 10 "	8 "	7¼ "	18 00

Price-list of Caps, Diaphragms, Etc., for the Rapid Rectigraphic and Perigraphic Lenses

	0	1	2	3	4	5	6	7	8
Flanges . . .	\$0 35	\$0 45	\$0 65	\$0 75	\$1 00	\$1 30	\$1 60	\$2 50	\$3 00
Diaphragms . .	70	80	1 20	1 75	2 25	2 75	3 40	5 75	6 75
Cases	30	35	40	45	50	65	75	1 25	1 50
Caps	30	35	40	45	50	65	75	1 25	1 50

Single Achromatic Lenses

These lenses are constructed especially for photographic purposes, and consist of a positive crown-glass lens combined with a negative flint glass lens, corrected for actinic light.

The following prices are for lenses unmounted.

¾ in. diameter, 4¼ in. focus	\$0 50
¾ " " 5 " "	50
1 " " 6 " "	80
1¼ " " 8 " "	1 60
1½ " " 10 " "	2 00
1½ " " 12 " "	2 60
1½ " " 14 " "	2 00
2½ " " 16 " "	4 50

Special prices will be quoted on these lenses to dealers or manufacturers desiring to use them in quantities.

Single Achromatic Lenses, Mounted

These lenses are mounted in a nicely finished and lacquered brass mount, which is provided with a rotating diaphragm, and is also fitted with a morocco cap.

No.	Size of Plate	Focus	Price
1	2½ x 3¼ inches	5 inches	\$2 75
2	3¼ x 4¼ "	5½ "	3 00
3	4 x 5 "	6 "	3 25
4	5 x 8 "	9 "	4 50
5	6½ x 8½ "	12 "	5 50
6	8 x 10 "	14 "	7 50

Double Convex Finder Lenses

These lenses are of the best quality, accurately centered so that the optical axis is concentric with the edge and the surfaces.

No.	Diameter	Focus	Price
1	¾ inch	¾, 1, 1¼ inch	\$0 15
2	½ "	1, 1¼, 1½ "	20
3	⅜ "	1½, 2, "	25
4	¼ "	2, 3, "	30
5	⅜ "	2½, 3, 3½ "	35
6	1 "	3, 4, "	40

Korona Shutter

With Iris Diaphragm Model "A"

Our new '99 Model "A" Korona Shutter is very simple in construction and operation. It is exceedingly compact and has all the essential features of an up-to-date Shutter. It is light, durable, and simplest possible mechanism. It is made in two sizes, ranging from 4 x 5 to 5 x 7, and only in combination with an iris diaphragm, the price including both the diaphragm and the Shutter.

The setting of the Shutter does not open the blades, so there is not the slightest danger of exposing the plate before the bulb is pressed. It is arranged so that it can be released by pneumatic pressure with the bulb, or by hand in pressing the lever. The disc at the top of the Shutter controls the length of exposure from 1 to $\frac{1}{100}$ of a second. The indicator with the index over the letters I. B. T. controls the action as to time or instantaneous exposure. With the instantaneous exposure, of course, one pressure of the bulb is all that is required, while with the time exposure the first pressure opens the Shutter and the second pressure closes it. When the index is set at B, the Shutter will remain open as long as the bulb is kept under pressure. This feature is original with our Shutter, and is of especial value in making very short time exposures, where it would be impossible to give two pressures to the bulb without making too long an exposure.

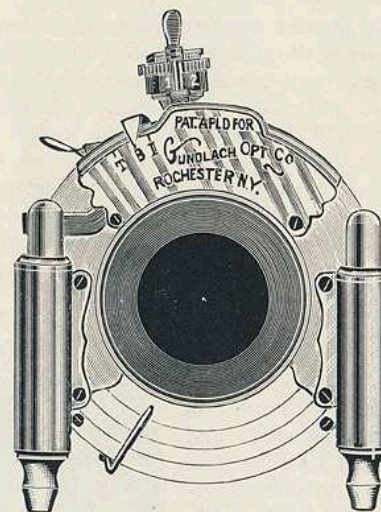
In operating the Shutter there is no jar, even at the highest speed, and the plate is fully exposed for the time desired, in sharp contrast to these Shutters which take up much of the specified time for the movement of their blades.

The graduation on the diaphragm plate is in accordance with the system of the British Society; the number indicates the f value of the opening. Where the plates are graduated with a second series of numbers, as 1, 2, 3, etc., they do not refer to the focus of the lens, but are only to be used to indicate a change in the size of the opening, when using the W. A. Lenses. For the Long Focus Korona the openings are marked with the f value of the various members of the lens system.

The workmanship in these Shutters is of the best, and they are suited to all gallery or outside work. They work reliably, are simple and durable, and have quickly attained wide popularity.

Korona Shutter Model "A"

With Iris Diaphragm



No.	Complete on a New Lens of our own manufacture without extra barrel	When fitted to Lenses of our own manufacture with extra barrel	When fitted to Lenses of other manufacture, leaving barrel intact
1-4 x 5	\$ 8 00	\$ 8 50	\$ 9 00
2-5 x 7	8 00	8 50	9 00
3-5 x 8	10 00	10 50	10 00
4-6½ x 8½	10 00	10 50	10 00
5-8 x 10	13 00	13 50	14 00

We assume no responsibility for the proper mounting of a lens into a Shutter, whether of our own or other manufacture, unless the complete lens is sent to us.

Korona Shutter

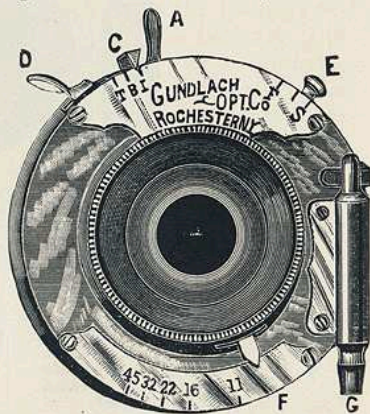
With Iris Diaphragm Model "B"

Our "B" Shutter is more simple in construction and operation than model "A." It is made in two sizes, 4 x 5 and 5 x 7, and only in combination with an iris diaphragm, the price including both the diaphragm and the shutter.

The setting of the Shutter does not open the blades, so there is not the slightest danger of exposing the plate before the bulb is pressed. It is arranged so that it can be released by pneumatic pressure with the bulb, or by hand in pressing the lever. The index over the letters I. B. T. controls the action as to time, instantaneous or bulb exposure. With the instantaneous exposure, of course, one pressure of the bulb is all that is required, while with the time exposure the first pressure opens the Shutter and the second pressure closes it. When the index is set at B, the Shutter will remain open as long as the bulb is kept under pressure. This feature is original with our Shutter, and is of especial value in making very short time exposures, where it would be impossible to give two pressures to the bulb without making too long an exposure.

The operation of the Shutter results in no jar, even at the highest speed, and the plate is fully exposed for the time desired, in sharp contrast to these Shutters which take up much of the specified time for the movement of their blades.

The graduation on the diaphragm plate is in accordance with the system of the British Society; the number indicates the *f* value of the opening.



Prices of the Korona Shutter "B."

- No. 1, 4 x 5, \$7 00
- No. 2, 5 x 7, 7 00

We assume no responsibility for the proper mounting of a lens into a shutter, whether of our own or other manufacture, unless the complete lens is sent to us.

Tripods

The above tripods are made of straight-grained ash or spruce, carefully selected for strength and lightness; are very compact, exceptionally firm and rigid. Can be adjusted from three feet up to four and one-half feet high. The great annoyance of legs becoming separated when tripod has camera attached is ingeniously overcome by the pin-locking arrangement, which holds its legs firmly together.



- No. 1, compact ash or spruce (see cut), . . \$3 00
- No. 5, compact spruce, 1 50

Korona Plate-Holders

These plate-holders are made of the finest selected cherry, and are provided with hard rubber slides.

- 4 x 5 . . . \$1 00 | 5 x 7 . . . \$1 25 | 6 1/2 x 8 1/2 . . . \$1 50 | 8 x 10 . . . \$2 00

Hard Rubber Plate-Holder Slides

- 4 x 5 \$0 20 | 5 x 7 \$0 25
- 6 1/2 x 8 1/2 30 | 8 x 10 50



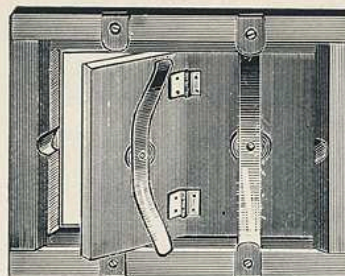
Kits

These are made so that a smaller size of plate can be used in a plate-holder.

- 4 x 5, to hold 3 1/4 x 4 1/4 plate \$ 20
- 5 x 7, to hold 3 1/4 x 4 1/4 plate 25
- 5 x 7, to hold 4 x 5 plate 25

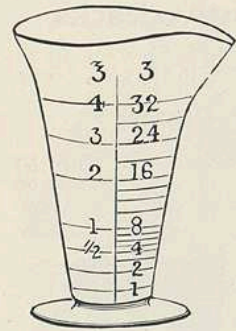
Korona Printing Frames

- 3 1/4 x 4 1/4 \$0 40
- 4 x 5 40
- 5 x 7 50
- 5 x 8 50



Korona Special Printing Frames

- 3 1/4 x 4 1/4 \$0 25 | 5 x 7 \$0 50
- 4 x 5 25 | 5 x 8 50



Graduated Glasses

FOR MEASURING LIQUIDS.

Minim	\$0 25	8 ounces	\$0 40
1 ounce	20	12 "	55
2 "	25	16 "	70
4 "	30	32 "	1 50

Glass Funnels

1/2 pint	\$0 12
1 "	15
1 quart	20
2 "	25



Fluted Glass Funnel and Filter

The Fluted Funnel is the best glass funnel made, being very strong. It has glass ribs on the inside, forming passages through which the solution passes quickly while filtering.

1/2 pint	\$0 15	1 quart	\$0 30
--------------------	--------	-------------------	--------



Dry Plates

We sell several makes of Dry Plates, among them being Forbes, Seed, Stanley, American and Standard.

	Per doz.		Per doz.
3 1/4 x 4 1/4	\$0 45	10 x 12	\$3 80
4 x 5	65	11 x 14	5 00
4 1/4 x 6 1/2	90	14 x 17, double thick	9 00
5 x 7	1 10	16 x 20	12 50
5 x 8	1 25	18 x 22	15 50
6 1/2 x 8 1/2	1 65	3 1/4 x 4, Eastman's Transparency Plates for Lantern Slides	70
8 x 10	2 40		

Compressed Fibre Trays

FOR DEVELOPING, FIXING OR TONING.

Fibre Trays are light in weight, yet tough and strong. As they are not affected by the action of chemicals, and are easily kept clean, we recommend them for all purposes. The deep trays have a lip.

	Shallow.	Deep.		Shallow.	Deep.
4 x 5	\$0 25	\$0 40	8 x 10	\$0 95	
5 x 8	45	55	10 x 12	1 50	
6 1/2 x 8 1/2	60		11 x 14	2 25	

Japanned Tin Developing Trays

4 x 5	\$0 20	6 1/2 x 8 1/2	\$0 30
5 x 8	25	8 x 10	40

Glass Trays

4 x 5	\$0 20	5 x 8	\$0 25
-----------------	--------	-----------------	--------

Ferro-Prussiate, or Blue Paper

FOR MAKING BLUE AND WHITE PICTURES.

We now furnish French Satin for Blue Paper, which is put up in packages guaranteed to keep perfectly for one year in the unopened tubes, but it must be understood that our liability ceases when the tubes are opened and the goods are found in perfect condition. After the package is opened the contents become subject to atmospheric conditions and their preservation will depend entirely upon the care exercised by the purchaser. Put up in light, tight packages of two dozen sheets.

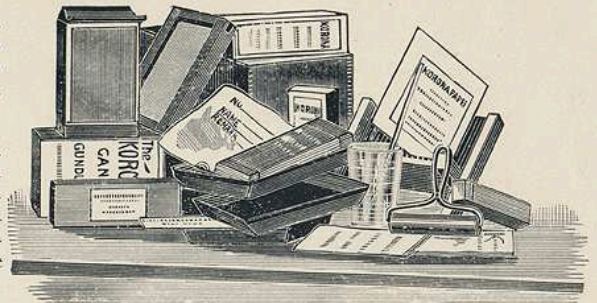
	Per pkg.		Per pkg.
3 1/4 x 4 1/4	\$0 20	5 x 8	\$0 40
4 x 5	20	6 1/2 x 8 1/2	50
4 1/4 x 6 1/2	30	8 x 10	75
5 x 7	35		

Ferrottype Plates

Ferrottype Plates have a highly polished surface, and are used for drying Aristotype or Bromide papers when it is desired to have a glossy finish without burnishing. Cannot be sent by mail. 10 x 14 inches, each 15c.; dozen \$1.25.

Complete Developing and Printing Outfits

For the large number of amateurs who prefer not only to "take" pictures, but finish them as well, we have arranged the following complete outfits, comprising the necessary articles for developing the negative and making the print:



Outfit No. 1

- | | | |
|-----------------------------|--|----------------------|
| 1 Fibre Tray, | 1 four oz. bottle Developing Solution, | 1 four oz. Graduate, |
| 3 Tin Trays, | 1 four oz. bottle Toning Solution, | 1 Stirring Rod, |
| 1 dozen Mounts, | 1 tube Paste, | 1 Candle Lamp, |
| 1 dozen Negative Envelopes, | 1 Printing Frame, | 1 Candle, |
| 1 dozen Solio Paper, | 1 Dry Rack, | 1 Print Roller, |
| 1/2 pound Hypo, | | 1 Guide, |
| | | 1 package Bromide. |

Price, neatly boxed, 4 x 5 \$2 00 5 x 7 \$3 25

Outfit No. 2

This outfit contains a greater variety of accessories than No. 1, and a larger quantity of plates, chemicals, etc. It includes:

- | | | |
|---------------------------|-----------------------------|---------------------------|
| 3 Fibre Developing Trays, | 1 pound Hypo-Sulphite Soda, | 1 dozen solio Paper, |
| 1 dozen Dry Plates, | 1 tube Paste, | 1 bottle Toning Solution, |
| 1 Glass Graduate, | 1 Korona Ruby Lantern, | 25 Card Mounts, |
| 1 box Developer, | 1 Printing Frame, | 1 Copy "Guide," |
| 1 Print Roller, | 1 Dry Rack, | 1 package Bromide. |

Price, neatly boxed, 4 x 5 \$4 00 5 x 7 \$4 75



Focusing Glass

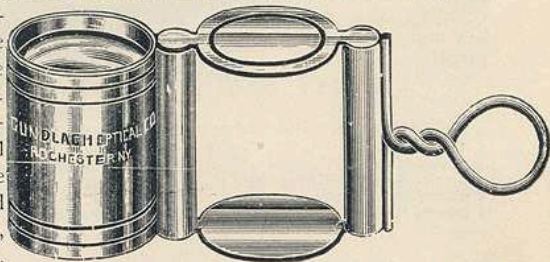
This lens is an achromatic combination of novel construction, consisting of a double convex crown-glass lens and a negative miniscus flint-glass lens, cemented together and mounted in brass, with adjustment to focus. The lens is perfectly aplanatic. Price, \$3.00.

Globe Magnifiers

The globe magnifier is made after the principle of the globe lens, which consisted of a sphere of crown glass enclosed in two hemispheres of flint glass, and by the principle of its construction the aberrations were corrected to a higher degree than had heretofore been obtained by any other construction. This lens has an optical axis in any direction, hence the field is perfectly flat and distinct to the outer edges, and, what is true of no other lens, the field is always the largest possible. Pocket magnifiers, made on this principle, are furnished as follows:

No. 290—1	in. focus,	nickel-plated brass mount,	magnifying 11 diam.	\$ 5 00
No. 291— $\frac{3}{4}$	"	"	" 14 "	5 00
No. 292— $\frac{1}{2}$	"	"	" 21 "	8 00
No. 293— $\frac{1}{4}$	"	"	" 41 "	12 00

These lenses have proved very useful in many branches of photography.



INDEX.

	PAGE.
Focusing Glass	36
Globe Magnifiers	36
Korona Shutter, with Iris Diaphragm	29-30
Korona Cameras—	
Series I	3
" I-A	4
" I-B	5
" I-C	6
" II	7
" II-A	8
" II-B	9
" VI	10 to 13
" X	13
Lenses—	
Double Convex Finder	27
Instantaneous Symmetrical	22-23
Rectigraphic and Perigraphic	19-20-21-24
Single Achromatic	27
Turner-Reich Anastigmat	14 to 18
" " Process Lens,	18
Wide-angle	25
" " Symmetrical	26
Photographic Materials—	
Dry Plates	34
Developer	33
Ferrottype Plates	35
Ferro-Prussiate or Blue Paper	35
Focusing Cloths	33
Folding Negative Racks	33
Funnels and Filters	34
Graduated Glasses	34
Kits	31
Korona Plate-Holders	31
" Lantern	32
Orange or Ruby Fabric	32
" " Glass	32
" or Post Paper	32
Printing Frames, Korona	31
" Outfits	35
Trays	34
Tripods	31
Price-list of Caps, Diaphragms, etc.	26